

# WOOD IDENTIFICATION GUIDE

## Ash

# PARAMOUNT

Crafting Exquisite Woodwork Since 1984

**Common Name(s):**

Oregon Ash

**Scientific Name:**

*Fraxinus latifolia*

**Tree Size:**

65-80 ft (20-25 m) Tall  
1-3 ft (.3-1.0 m) Trunk Diameter

**Janka Hardness:**

1,160 lb<sub>f</sub> (5,160 N)

**Modulus of Rupture:**

12,700 lb<sub>f</sub>/in<sup>2</sup> (87.6 MPa)

**Elastic Modulus:**

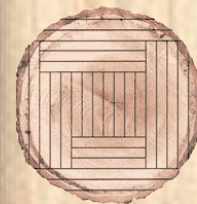
1,360,000 lb<sub>f</sub>/in<sup>2</sup> (9.38 GPa)

**Distribution Area:**

Western North America



Plain Sawn



Quarter Sawn



Raw



Sealed



**Color/Appearance:** The heartwood of ash wood exhibits a hue ranging from light to medium brown. Meanwhile, the sapwood often features a broad expanse and typically displays a beige or light brown shade, with the demarcation from the heartwood not always distinctly or sharply defined.

**Grain/Texture:** Ash wood possesses a texture ranging from medium to coarse, reminiscent of oak. The grain is predominantly straight and uniform, although occasional instances of curly or figured boards may be encountered.

**Workability:** Ash wood yields excellent outcomes when worked with both hand and machine tools. It responds favorably to steam bending and performs well in terms of gluing, staining, and finishing processes.

When ash wood is stained, it can closely resemble oak. However, oak typically exhibits much broader rays that are visible on all wood surfaces, including flatsawn surfaces, where they manifest as short, thin brown lines between the growth rings. In contrast, ash wood lacks these prominent rays.