

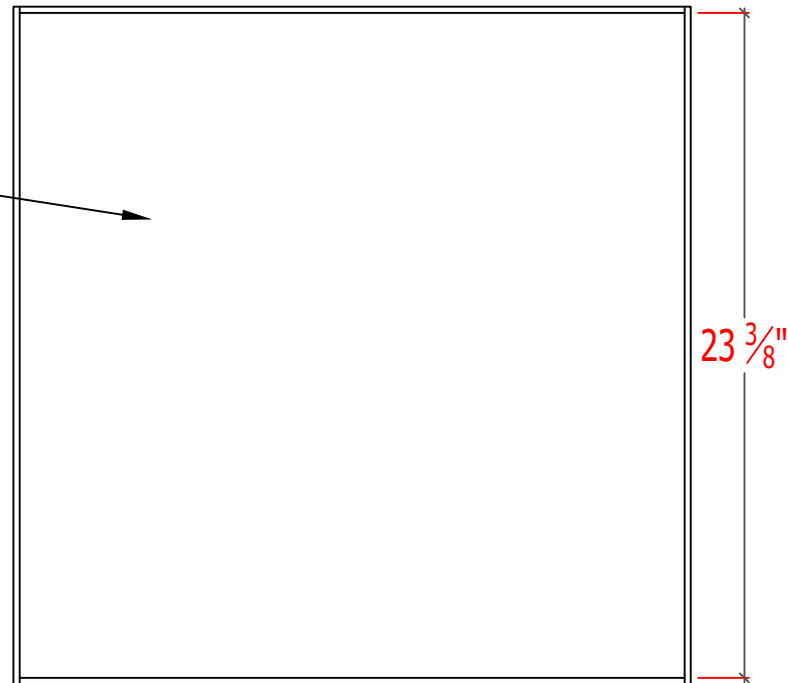
PROJECT:YOUR PROJECT NAME LOCATION:YOUR PROJECT ADDRESS SUBMITTAL DATE:XX/XX/XXXX	MATERIAL: VENEER ON MDF SPECIES: YOUR SPECIES STAIN:OPTIONAL FINISH:OPTIONAL FINISH	PRODUCT DIMENSION: 24"x24"		
		TILE THICKNESS: 3/4"		
		GRID: 9/16"	PERF: No	CHANNEL: No
		EDGE: SPLINE		SCRIM: NONE

1.1 Isometric

Drop In Tile Series
PRODUCT SKU: JC-BNPB916S

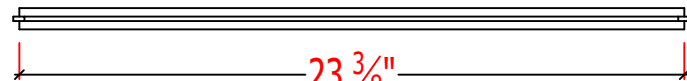
PARAMOUNT
CREATING EXQUISITE WOODWORK SINCE 1984

GRADE A VENEER OR
PREMIUM LAMINATE
FACING

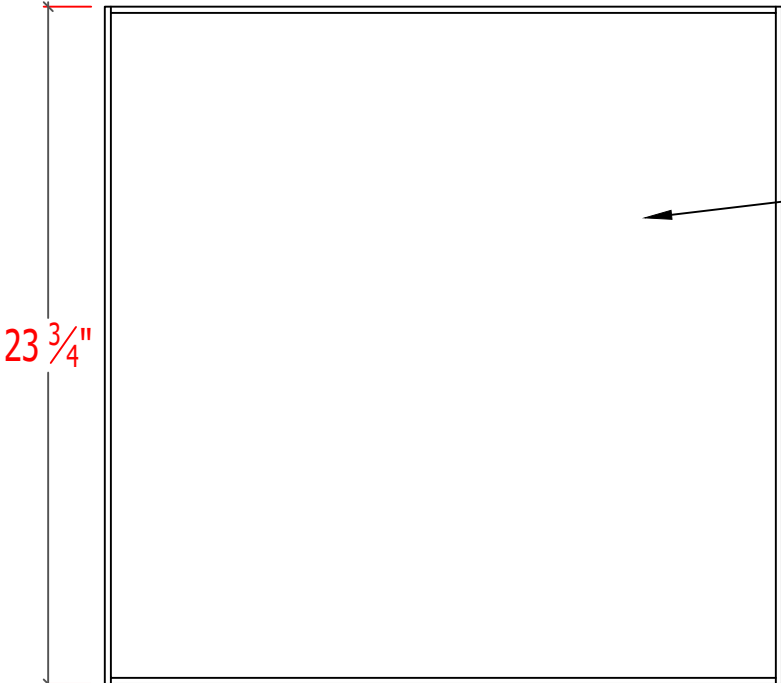


NO PERFORATION PATTERN

FRONT



MATCHING SPECIES- .5MM
WOOD EDGEBANDING.



#1 VENEER BALANCED
BACKER

3/16" TEMPERED MASONITE SPLINE

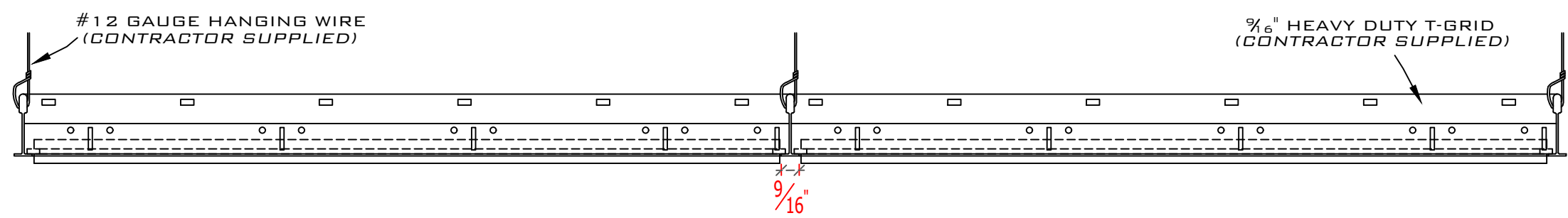
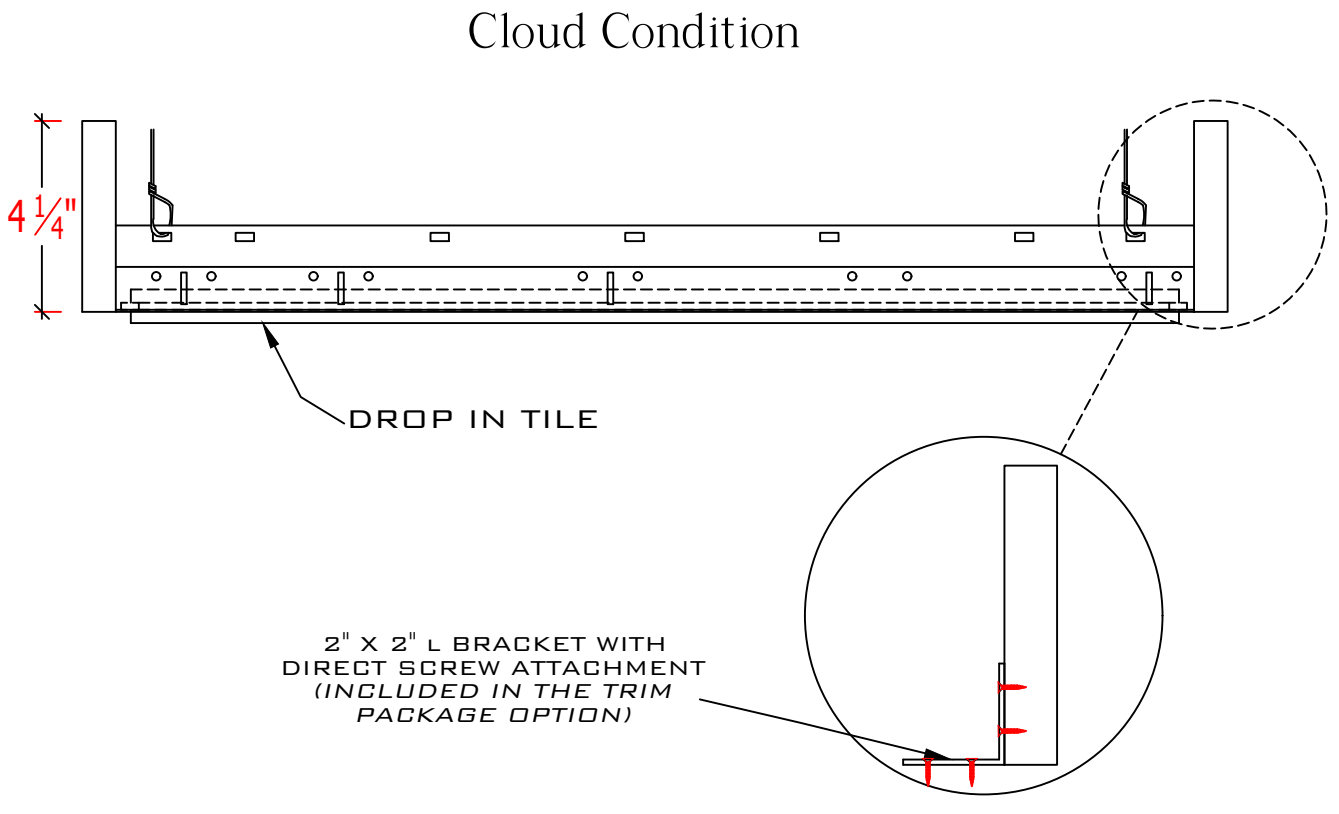
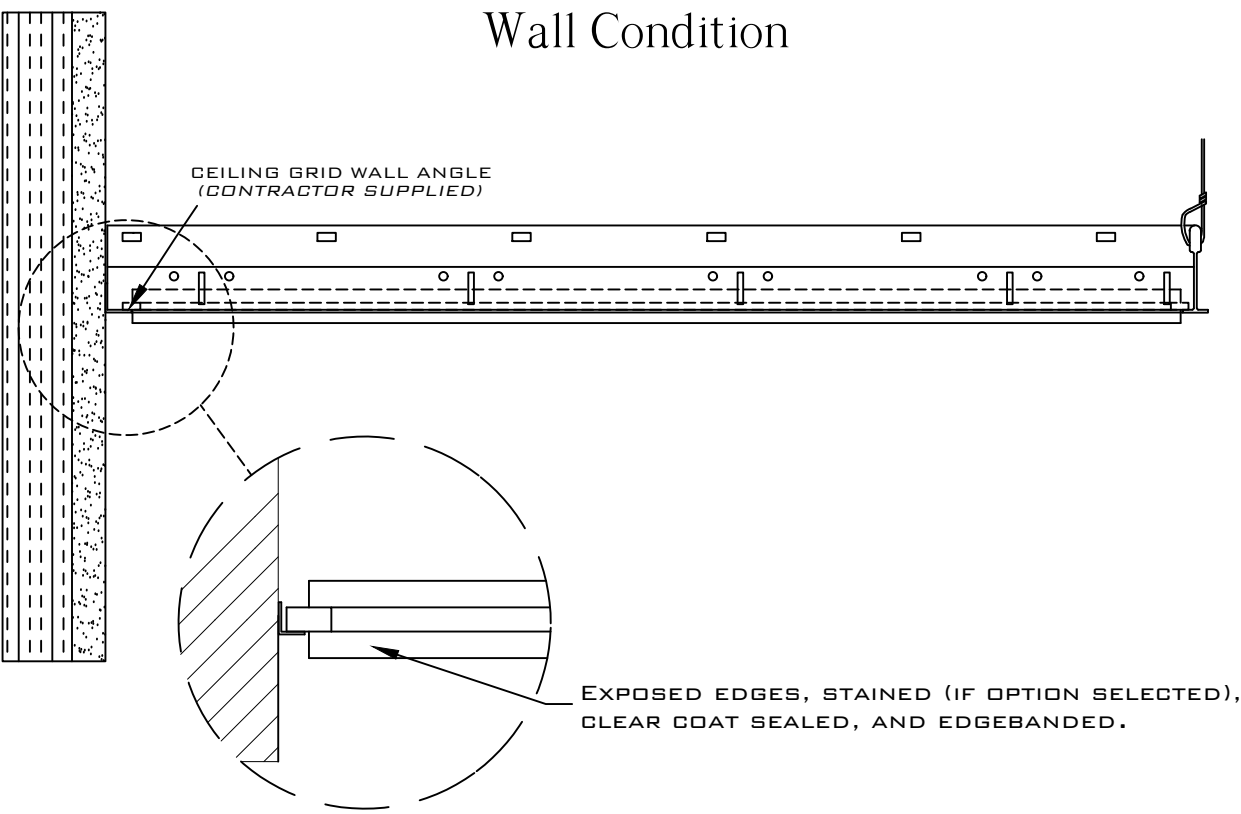
BACK

SCALE REPRESENTATION
1.5 = 12"

1.2 Product Configuration

Drop In Tile Series
PRODUCT SKU: JC-BNPB916S

PARAMOUNT
CREATING EXQUISITE WOODWORK SINCE 1984

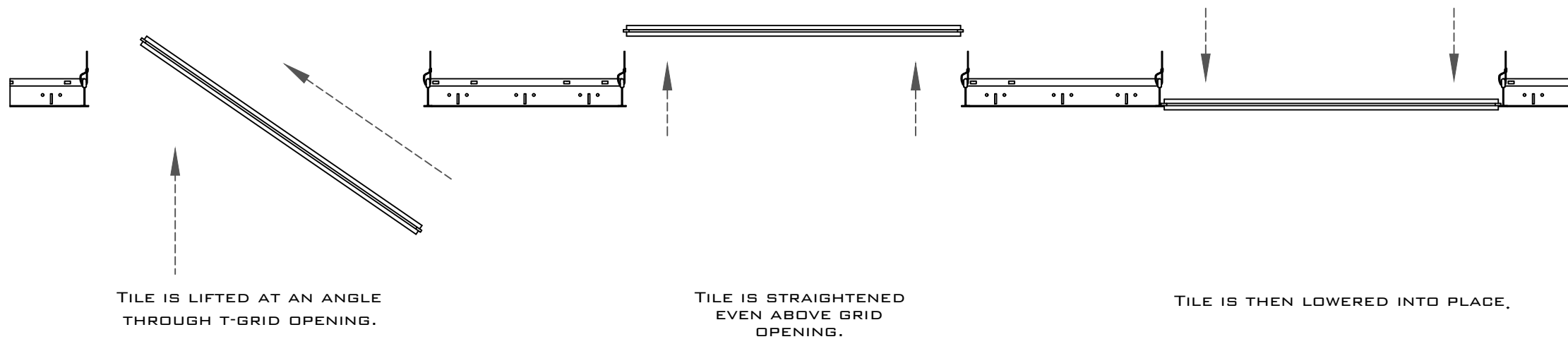


SCALE REPRESENTATION.
1.5 = 12"

1.3 Elevation

Drop In Tile Series
PRODUCT SKU: JC-BNPB916S

PARAMOUNT
CREATING EXQUISITE WOODWORK SINCE 1984

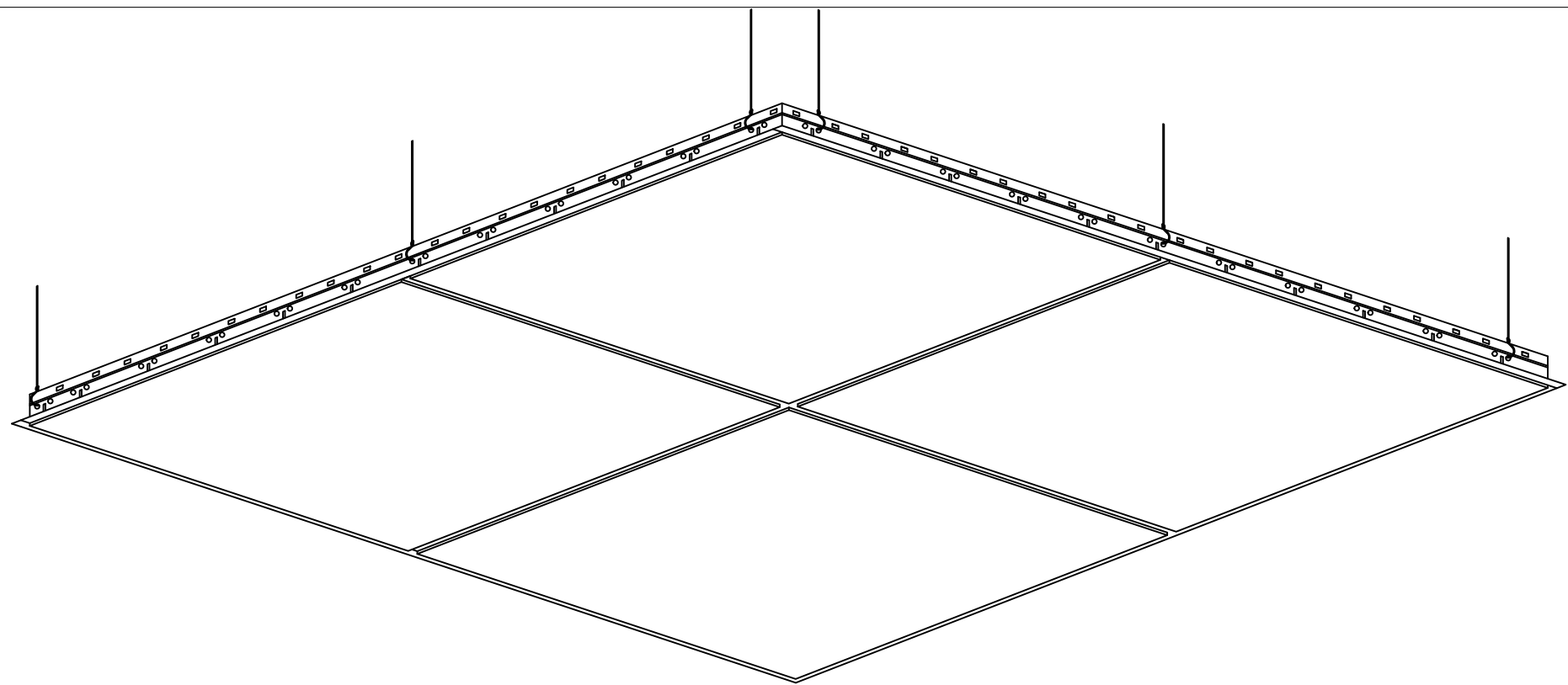


TILE IS LIFTED AT AN ANGLE
THROUGH T-GRID OPENING.

TILE IS STRAIGHTENED
EVEN ABOVE GRID
OPENING.

TILE IS THEN LOWERED INTO PLACE.

2X2 DROP IN TILE PRODUCT REPRESENTATION.
ACTUAL TILE LENGTH VARIES.



1.4 Installation

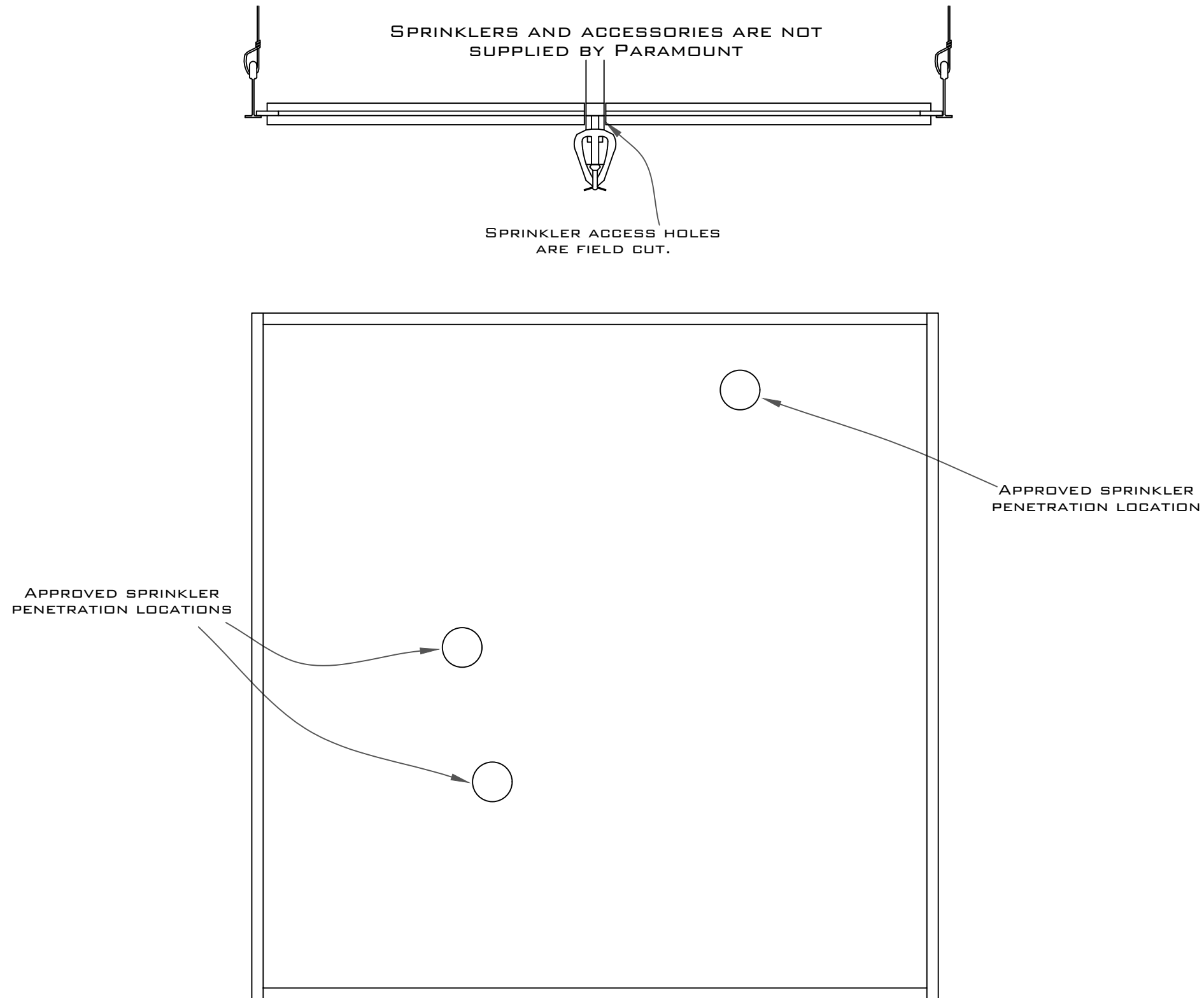
Supplemental Information 01

PARAMOUNT
CREATING EXQUISITE WOODWORK SINCE 1984

Drop In Tile Series
PRODUCT SKU: JC-BNPB916S

1.5 Standard Sprinkler Detail

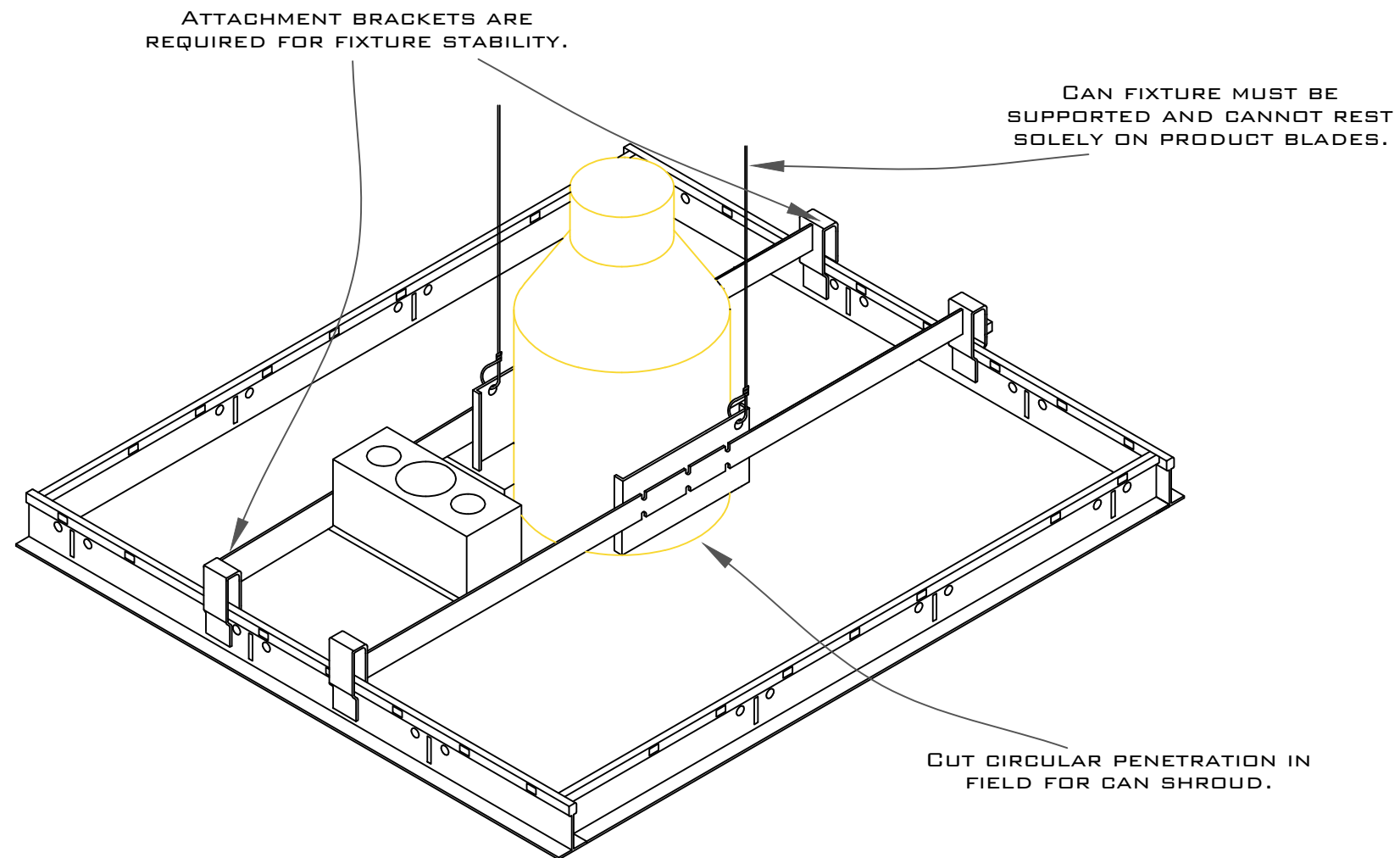
Supplemental Information 02



Drop In Tile Series

PRODUCT SKU: JC-BNPB916S

PARAMOUNT
CREATING EXQUISITE WOODWORK SINCE 1984



1.6 Standard Can Light Installation

Supplemental Information 03

Drop In Tile Series
PRODUCT SKU: JC-BNPB916S

PARAMOUNT
CREATING EXQUISITE WOODWORK SINCE 1984