

WOOD IDENTIFICATION GUIDE

Mahogany

PARAMOUNT

Crafting Exquisite Woodwork Since 1984

Common Name(s):

American Mahogany, Genuine Mahogany, Honduran Mahogany, Brazilian Mahogany, Big-Leaf Mahogany

Scientific Name:

Swietenia macrophylla

Tree Size:

150-200 ft (46-60 m) Tall
3-6 ft (1-2 m) Trunk Diameter

Janka Hardness:

900 lb_f (4,020 N)

Modulus of Rupture:

11,710 lb_f/in² (80.8 MPa)

Elastic Modulus:

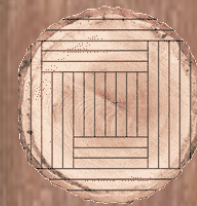
1,458,000 lb_f/in² (10.06 GPa)

Distribution Area:

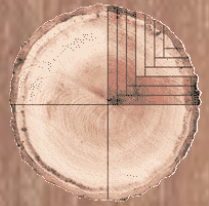
From South America to Central South America; also commonly grown on plantations



Plain Sawn



Quarter Sawn



Raw



Sealed



Color/Appearance: The color of mahogany heartwood can vary significantly, ranging from a light pinkish brown to a deeper reddish brown. As the wood ages, its color tends to deepen. Additionally, mahogany displays an optical phenomenon called chatoyancy.

Grain/Texture: The grain of mahogany wood may be straight, interlocked, irregular, or wavy. It possesses a medium and uniform texture, coupled with a moderate natural luster.

Workability: Generally, mahogany wood is easy to work with using both hand and machine tools, although sections with figured or irregular grain may be prone to tearout or chipping during machining. There may be a slight dulling of cutters. However, it sands easily and exhibits good performance in turning, gluing, staining, and finishing processes.

The ease with which Honduran mahogany can be worked, along with its aesthetic appeal and remarkable stability, has solidified its position as a long-standing favorite in the realm of lumber. This wood holds significant commercial importance in Latin America, where extensive plantations now cultivate it. Despite export restrictions, Honduran mahogany remains accessible in the form of lumber or veneer, particularly sourced from plantations. However, due to CITES restrictions, most U.S.-based retailers face limitations in shipping this wood internationally.

www.paramount-cc.com