

ARCHITECTURAL SPEAKERS



LISTEN AND BELIEVE

KEF's mission is to deliver sound with as little intervention as possible; from treble to bass, and everything in between. Listeners should be able to close their eyes and immerse themselves in the sound so deeply that they are transported, in their minds, to the source. We believe that the best sound is natural sound – and that access to it is a right, not a privilege.

Experience is everything, and that's no overstatement. Combining our obsessions with acoustic authenticity and innovative engineering, we'd like to think that KEF products speak for themselves.

We invite you to close your eyes and be transported.



HIDE YOUR SPEAKERS, NOT YOUR SOUND

An integrated home audio system should deliver flawlessly accurate three-dimensional sound. Whether you listen to music or movies, everything should be startlingly clear and breathtakingly realistic. The combination of innovative engineering and sophisticated acoustic design ensures KEF's architectural speakers offer as compelling a performance as its revered stand-alone Hi-Fi speakers.

KEF's obsessive urge to continuously innovate is clearly reflected in a range that includes some of the most advanced architectural speakers and solutions available today. From tiny in-ceiling speakers to the stunning Ci-Reference in-wall models, there is a product for every requirement. Each offers the purest sound while impeccable cosmetics ensure the speakers disappear into their surroundings and unique design features allow them to be fitted with the minimum of fuss.

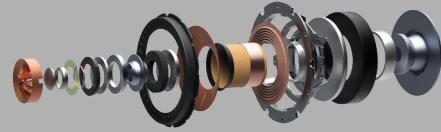






THE REFERENCE

UNI-Q®



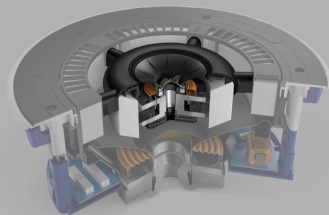
Uni-Q technology is the building block of KEF signature sound. Uni-Q technology places the tweeter precisely at the acoustic centre of the bass/midrange cone, so both act together as a single point source to disperse sound more evenly throughout the room. The result is the elimination of the limited 'sweet spot', therefore allowing everybody sitting at different spots in the room to experience and enjoy the same natural, detailed sound.

METAMATERIAL ABSORPTION TECHNOLOGY (MAT™)



A truly revolutionary tool in the KEF acoustic armoury, MAT™ is a highly complex maze-like structure that absorbs 99% of unwanted sound from the rear of the driver, eliminating the resulting distortion and providing purer, more natural sound.

PATENT-PENDING CAVITY RADIATION CONTROL



Cavity Radiation Control is a unique open-back midrange with acoustically absorptive foam design that eliminates midrange distortion, up to 30dB midrange dip, found in typical coaxially arranged three-way designs. Cavity Radiation Control enables KEF coaxial three-way architectural speakers to deliver the highest midrange acoustic realism.



THX® Certified

THX® Certified in the performance class of Dominus and Ultra, the formidable KEF Extreme Home Theatre system has jaw-dropping acoustic capabilities with all the drama and emotional intensity of true theatre sound quality.



Extremely Low Profile

KEF's incredible Ci-T Series is designed for delivering the highest quality sound when mounting depth is at an absolute premium. Even with a mounting depth of only 36mm, the Ci-T Series speakers still deliver exceptional KEF sound quality.



Ultra-thin Bezel

KEF's architectural range offers the slimmest visible rim around the speaker while casting virtually no shadow. Coupled with a magnetic grille and designed to fit tight into the wall or ceiling, KEF speakers disappear as if part of the ceiling.



Weatherproof

On the patio, by the pool, or on a yacht, the KEF Ventura Series outdoor speakers let customers enjoy music without compromise. Engineered to IP65 standards, these rugged, hard-wearing speakers can withstand even the most extreme weather conditions.



Dual Stereo

For areas with space for only one speaker, KEF's Dual Stereo models play left and right channels from a single unit containing twin tweeters and a dual voice coil woofer.



Soundlight

As discreet as LED downlights, KEF's tiny Soundlight gives you big speaker performance with outstanding sound coverage, thanks to Uni-Q's exceptionally wide dispersion.



Flush Mount

KEF's Flush Mount range blends premium sound with premium aesthetics. Sitting completely level with the wall or ceiling with no bezel makes these loudspeakers both easy to install and satisfyingly frameless when in place. In fact, the only hint that a KEF speaker is present is the natural, room-filling sound.







EXTREME HOME THEATRE

Setting a new standard for architectural speakers, KEF's Extreme Home Theatre pushes the boundaries of technology to bring you best-in-class acoustic performance, impeccable design and easy installation too. Hundreds of performance and quality assurance tests have been undertaken to be THX[®] Certified Dominus and THX[®] Certified Ultra, proof of the system's ability to deliver breathtakingly realistic, completely immersive, cinematic sound, just as the director intended.



Product		Extreme Home Theatre	Ci5160REFM-THX	Ci3160REFM-THX	Ci5160RL-THX	Ci3160RL-THX	Ci250RRM-THX	Ci200RR-THX	Ci200RS-THX	Ci160RR-THX	Ci4100QL-THX	
Series			Ci-Reference	Ci-Reference	Ci-R Series	Ci-R Series	Ci-R Series	Ci-R Series	Ci-R Series	Ci-R Series	Ci-R Series	Ci-Q Series
Cut-out dimensions	(H x W)		1052 x 209mm (41.42 x 8.23in.)	660 x 209mm (25.98 x 8.23in.)	1052 x 209mm (41.42 x 8.23in.)	660 x 209mm (25.98 x 8.23in.)	-	-	240 x 240mm (9.45 x 9.45in.)	-	476 x 114mm (18.74 x 4.49in.)	
	Diameter Ø		-	-	-	-	300mm (11.81in.)	238mm (9.37in.)	-	196mm (7.71in.)	-	
Mounting depth from surface			99mm (3.9in.)	99mm (3.9in.)	99mm (3.9in.)	99mm (3.9in.)	168mm (6.62in.)	126.5mm (4.98in.)	127mm (5in.)	110mm (4.33in.)	76mm (3in.)	
Drive units	LF		4 x 160mm (6.5in.)	2 x 160mm (6.5in.)	4 x 160mm (6.5in.)	2 x 160mm (6.5in.)	250mm (10in.)	200mm (8in.) Uni-Q	200mm (8in.) Uni-Q	165mm (6.5in.) Uni-Q	3 x 100mm (4in.)	
	MF		125mm (5.25in.) Uni-Q	125mm (5.25in.) Uni-Q	160mm (6.5in.) Uni-Q	160mm (6.5in.) Uni-Q	100mm (4in.) Uni-Q	-	-	-	100mm (4in.) Uni-Q	
	HF		25mm (1in.) vented aluminium dome with Metamaterial Absorption Technology ¹	25mm (1in.) vented aluminium dome with Metamaterial Absorption Technology ¹	25mm (1in.)	25mm (1in.)	19mm (0.75in.) vented aluminium dome with MAT ¹	38mm (1.5in.)	38mm (1.5in.)	25mm (1in.)	19mm (0.75in.)	
Sensitivity (2.83V/1m)			92dB	89dB	90dB	90dB	89dB	90dB	90dB	90dB	89dB	
Recommended amplifier power			50-500W	50-350W	40-250 W	30-180W	50-250W	10-190W	10-190W	10-190W	10-150W	
Nominal impedance		4Ω	4Ω	4Ω	4Ω	8Ω	4Ω	4Ω	4Ω	4Ω		
Rough-in frame		RIF5160L	RIF3160	RIF5160L	RIF3160L	-	RIF200R	RIF200S	RIF160R	RIF4100L		
Rear enclosure		-	-	-	-	-	RNC200R	RNC200S	RNC160R	-		



IN-CEILING AND IN-WALL SPEAKERS

KEF's comprehensive collection of in-ceiling and in-wall architectural speakers offer exceptional performance from models designed to disappear into their environment. Whether you require the class-defining abilities or the space saving features, KEF has the perfect speaker for your installation.



Product		Ci-Q Series	Ci200QL	Ci160QL	Ci200QS	Ci160QS	Ci130QS	Ci200QR	Ci160QR	Ci130QR
Cut-out dimensions	(H x W)		334 x 238mm (13.15 x 9.37in.)	274 x 194mm (10.79 x 7.64in.)	238 x 238mm (9.37 x 9.37in.)	194 x 194mm (7.64 x 7.64in.)	158 x 158mm (6.22 x 6.22in.)	-	-	-
	Diameter Ø		-	-	-	-	-	240mm (9.45in.)	196mm (7.71in.)	158mm (6.22in.)
Mounting depth from surface			99.8mm (3.93in.)	91mm (3.58in.)	99.8mm (3.93in.)	91mm (3.58in.)	77.9mm (3.07in.)	103.3mm (4.07in.)	91mm (3.58in.)	77.8mm (3.06in.)
Drive units	LF		200mm (8in.) Uni-Q	160mm (6.5in.) Uni-Q	200mm (8in.) Uni-Q	160mm (6.5in.) Uni-Q	130mm (5.25in.) Uni-Q	200mm (8.0in.) Uni-Q	160mm (6.5in.) Uni-Q	130mm (5.25in.) Uni-Q
	MF		-	-	-	-	-	-	-	-
	HF		25mm (1in.)	19mm (0.75in.)	25mm (1in.)	25mm (1in.)	25mm (1in.)	25mm (1in.)	19mm (0.75in.)	19mm (0.75in.)
Sensitivity (2.83V/1m)			90dB	89dB	90dB	89dB	87dB	90dB	89dB	87dB
Recommended amplifier power			10-150W	10-125W	10-150W	10-125W	10-100W	10-150W	10-125W	10-100W
Nominal impedance			8Ω	8Ω	8Ω	8Ω	8Ω	8Ω	8Ω	8Ω
Rough-in frame		RIF200L	RIF160L	RIF200S	RIF160S	RIF130S	RIF200R	RIF160R	RIF130R	
Rear enclosure		RNC200L	RNC160L	RNC200S	RNC160S	RNC130S	RNC200R	RNC160R	RNC130R	



Product		Ci-C Series	Ci160.2CL	Ci160.2CS	Ci130.2CS	Ci200.2CR	Ci160.2CR	Ci130.2CR	Ci-E Series	Ci160ES	Ci200ER	Ci160ER	Ci130ER
Cut-out dimensions	(H x W)		274 x 194mm (10.79 x 7.64in.)	194 x 194mm (7.64 x 7.64in.)	158 x 158mm (6.22 x 6.22in.)	-	-	-		194 x 194mm (7.64 x 7.64in.)	-	-	-
	Diameter Ø		-	-	-	240mm (9.45in.)	196mm (7.71in.)	158mm (6.22in.)		-	240mm (9.45in.)	196mm (7.71in.)	158mm (6.22in.)
Mounting depth from surface			84.5mm (3.33in.)	84.5mm (3.33in.)	77.1mm (3.03in.)	97.2mm (3.83in.)	85.2mm (3.35in.)	77.5mm (3.05in.)		85.2mm (3.35in.)	97.2mm (3.83in.)	85.2mm (3.35in.)	77.5mm (3.05in.)
Drive units	LF		160mm (6.5in.) Uni-Q	160mm (6.5in.) Uni-Q	130mm (5.25in.) Uni-Q	200mm (8in.) Uni-Q	160mm (6.5in.) Uni-Q	130mm (5.25in.) Uni-Q		160mm (6.5in.) Uni-Q	200mm (8in.) Uni-Q	160mm (6.5in.) Uni-Q	130mm (5.25in.) Uni-Q
	MF		-	-	-	-	-	-		-	-	-	-
	HF		16mm (0.6in.)	16mm (0.6in.)	16mm (0.6in.)	16mm (0.6in.)	16mm (0.6in.)	16mm (0.6in.)		16mm (0.6in.)	16mm (0.6in.)	16mm (0.6in.)	16mm (0.6in.)
Sensitivity (2.83V/1m)			89dB	89dB	87dB	90dB	89dB	87dB		89dB	90dB	89dB	87dB
Recommended amplifier power			10-100W	10-100W	10-80W	10-125W	10-100W	10-80W		10-100W	10-125W	10-100W	10-80W
Nominal impedance			8Ω	8Ω	8Ω	8Ω	8Ω	8Ω		8Ω	8Ω	8Ω	8Ω
Rough-in frame		RIF160L	RIF160S	RIF130S	RIF200R	RIF160R	RIF130R	RIF160S	RIF200R	RIF160R	RIF130R		
Rear enclosure		RNC160L	RNC160S	RNC130S	RNC200R	RNC160R	RNC130R	RNC160S	RNC200R	RNC160R	RNC130R		

Not all models and finishes are available in all markets, contact your local dealer for specific range details.

SPECIAL APPLICATIONS

With a Flush Mount, an Extremely Low Profile, Dual Stereo and Soundlight speakers, KEF's architectural speakers are designed to cater to even the most specific needs, and a wide variety of installation setups. The discreet design only serves to enhance its extremely powerful performance.



Product		Soundlight	Ci100QS	Ci100.2QR	Flush Mount	Ci130QSfl	Ci130QRfl
Cut-out dimensions	(H x W)			112 x 112mm (4.41 x 4.41in.)		-	
	Diameter Ø		-	118.0mm (4.65in.)		-	158mm (6.22in.)
Mounting depth from surface			72mm (2.83in.)	103.1mm (4.06in.)		101mm (3.98in.)	101mm (3.98in.)
Drive units	LF		100mm (4in.) Uni-Q	75mm (3.15in.) Uni-Q		130mm (5.25in.) Uni-Q	130mm (5.25in.) Uni-Q
	MF		-	-		-	-
	HF		19mm (0.75in.)	-		19mm (0.75in.)	19mm (0.75in.)
Sensitivity (2.83V/1m)			88dB	83dB		87dB	87dB
Recommended amplifier power			10-50W	10-50W		10-100W	10-100W
Nominal impedance			4Ω	4Ω		8Ω	8Ω
Rough-in frame			RIF100S	RIF100R		NA	NA
Rear enclosure			RNC100S	RNC100R		NA	NA

Not all models and finishes are available in all markets, contact your local dealer for specific range details.







Product		Dual Stereo	Ci160CSds	Ci160CRds	Extremely Low Profile	Ci160TS	Ci160TR	
Cut-out dimensions	(H x W)		194 x 194mm (7.64 x 7.64in.)	-		-	194 x 194mm (7.64 x 7.64in.)	196mm (7.71in.)
	Diameter Ø		-	196mm (7.71in.)		-	-	234.6mm (9.24in.)
Mounting depth from surface			84.5mm (3.33in.)	86mm (3.36in.)		<36mm (1.42in.)	<36mm (1.42in.)	
Drive units	LF		160mm (6.5in.) Dual voice coil	160mm (6.5in.) Dual voice coil		115mm (4.5in.) Dual layer	115mm (4.5in.) Dual layer	
	MF		-	-		-	-	
	HF		2 x 19mm (0.75in.)	2 x 19mm (0.75in.)		25mm (1in.)	25mm (1in.)	
Sensitivity (2.83V/1m)			91dB	91dB		87dB	87dB	
Recommended amplifier power			10-80W	10-80W		10-100W	10-100W	
Nominal impedance			8Ω	8Ω		8Ω	8Ω	
Rough-in frame		RIF160S	RIF160R	RIF160S	RIF160R			
Rear enclosure		RNC160S	RNC160R	-	-			

Not all models and finishes are available in all markets, contact your local dealer for specific range details.





INSTALLED SUBWOOFERS

KEF's installed subwoofers offer incredible sonic performance whilst remaining visually discreet, and they are all engineered to partner any of KEF's architectural speaker ranges. Plus, when powered by KEF's DSP-driven KASA500 install audio system amplifier, the Ci3160RLb-THX, Ci250RRb-THX and Ci200Qsb-THX subwoofers achieve the intense bass performance levels required for THX Certified Select and THX Certified Ultra (dependent on configuration).



Product		Subwoofer	Ci3160RLb-THX	Ci250RRb-THX Active Mode (KASA 500)	Ci200Qsb-THX Passive Mode (Crossover "ON")	Ci200Qsb-THX Active Mode (KASA500)	Ci200TRb Passive Mode	Ci200TRb Active Mode (KASA500)
Cut-out dimensions	(H x W)		660 x 209mm (25.98 x 8.23in.)	-	238 x 238mm (9.37 x 9.37in.)	238 x 238mm (9.37 x 9.37in.)	-	-
	Diameter Ø		-	300mm (11.81in.)	-	-	240mm (9.45in.)	240mm (9.45in.)
Mounting depth from surface			88.5mm (3.84in.)	147mm (5.8in.)	101.6mm (4in.)	101.6mm (4in.)	59mm (2.32in.)	59mm (2.32in.)
Drive units	LF		3 x 160mm (6.5in.)	250 mm (10in.)	200mm (8in.)	200mm (8in.)	200mm (8in.)	200mm (8in.)
Sensitivity (2.83V/1m)			92dB	-	85dB	-	87dB	87dB
Required amplifier			KEF KASA500	KEF KASA500	-	KEF KASA500	-	KEF KASA500
Units required for THX Ultra:	Subwoofer KASA500		4 2	4 1	-	8 2	-	-
Units required for THX Select:	Subwoofer KASA500		2 1	2 1	-	4 1	-	-
Recommended amplifier power			-	-	10 - 150W	-	10-125W	-
Nominal impedance			4Ω	-	6Ω	-	Stereo mode: 2 x 8Ω mono mode: 16Ω	Stereo mode: 2 x 8Ω mono mode: 16Ω
Rough-in frame			RIF3160L	-	RIF200S	RIF200S	RIF200R	RIF200R
Rear enclosure			-	-	RNC200S	RNC200S	RNC200R	RNC200R

Not all models and finishes are available in all markets, contact your local dealer for specific range details.

OUTDOOR

Weather-resistant, IP65 certified and salt spray tested, KEF's Ventura series of outdoor speakers are ideal for humid environments, and can flood your pool or garden with high-quality sound, even in extreme atmospheric conditions.

With an all-metal combination of brass, aluminium and stainless steel, the Ventura Series offers exceptional performance throughout the seasons. And delivers the same high-quality sound that KEF has a reputation for, with exceptional clarity and space-filling bass.



Product		Ventura	Ventura 6	Ventura 5
Drive units	LF		160mm (6.5in.)	130mm (5.25in.)
	MF		-	-
	HF		25mm (1in.)	25mm (1in.)
Sensitivity (2.83V/1m)			90dB	89dB
Recommended amplifier power			10-125W	10-100W
Nominal impedance			6Ω	6Ω
Operating temperature range			-40°C to 70°C (-40°F to 158°F)	-40°C to 70°C (-40°F to 158°F)
Certification			IP65	IP65

Not all models and finishes are available in all markets, contact your local dealer for specific range details.







DEDICATED AMPLIFIERS AND ACCESSORIES

Unlock the full potential of KEF subwoofers with the KASA500, a powerful Class-D Dual 250WPC amplifier. This DSP controlled system amplifier is optimised to deliver thunderous bass from KEF architectural subwoofers. With both line and speaker level inputs, and DSP configurable pass-through with optional high-pass filters, the KASA500 is extremely versatile and can be deployed in limitless system configurations.

KEF's accessories allow architectural speakers to perform at their best. Our Rough-In Frames reserves the perfect space for the speakers during a new construction build. When constructions or building codes dictate, our metal rear enclosures are available for easy installation. Rear enclosures may help to mitigate some mid and high frequency sound transfer into other rooms.



Steel Rough-in Frames



Steel Rear Enclosures



Product	Amplifier KASA500
Inputs	Selectable stereo RCA line level, or mono LFE RCA level; Stereo speaker level
Outputs	2 x 250W@4 Ohms Bridge 1 x 500W@8 Ohms
Product dimension (H X W X D)	88 x 432 x 304mm (3½ x 17 x 12in.) With feet : 92 x 432 x 304mm (3½ x 17 x 12in.) With rack ears; 2 EIA rack space: 88 x 483 x 304mm (3½ x 19 x 12in.)
Weight	4kg (9lbs)

Not all models and finishes are available in all markets, contact your local dealer for specific range details.





FREEDOM OF EXPRESSION

A major part of KEF's design process ensuring that every loudspeaker benefits from the Consistent Voicing concept – a thread of sonic DNA that starts with Muon and travels all the way through to Soundlight. This can only be achieved through outstanding engineering capabilities, unwavering dedication to the KEF philosophy of sound and uncompromising scrutiny.

Consistent Voicing ensures that every room and any combination of KEF's architectural and traditional loudspeakers deliver awe-inspiring natural sound. It gives the freedom to create a bespoke solution as unique as the individual with no compromise.

