



INTRO

INDEX

UPHOLSTERY

DINING CHAIR

LIGHTING

DESIGN

CLIENT

Anonymous

AGENDA

Complete tasks according to the brief

DESIGN EXERCISE

Disclaimer: This project was developed as part of a confidential design challenge. All brand references have been anonymized to respect the privacy of the original client. This work is intended for portfolio use only and is not affiliated with or endorsed by any existing company.

Index

01

INTRO

02

INDEX

03/08

UPHOLSTERY/SOFT SEATING

09/14

DINING CHAIR

15/19

LIGHTING

20

DESIGN

UPHOLSTERY

brief

Objective: Develop and showcase a lounge chair or sofa concept.

Deliverables:

Slide 1: Market Research - Competition & Inspirational References

Slide 2: Initial Sketches & Design Ideations

Slide 3: Refined Concept Development

Slide 4: Final Presentation Renders

Note: We're seeking a designer with exceptional upholstery and fabric rendering skills. If this is your strength, use this opportunity to highlight your expertise!

UPHOLSTERY

market research & inspirations



English Roll Arm Chair by Restoration Hardware

A timeless piece that stays true to the traditional design,
providing a foundation for modern reinterpretation.



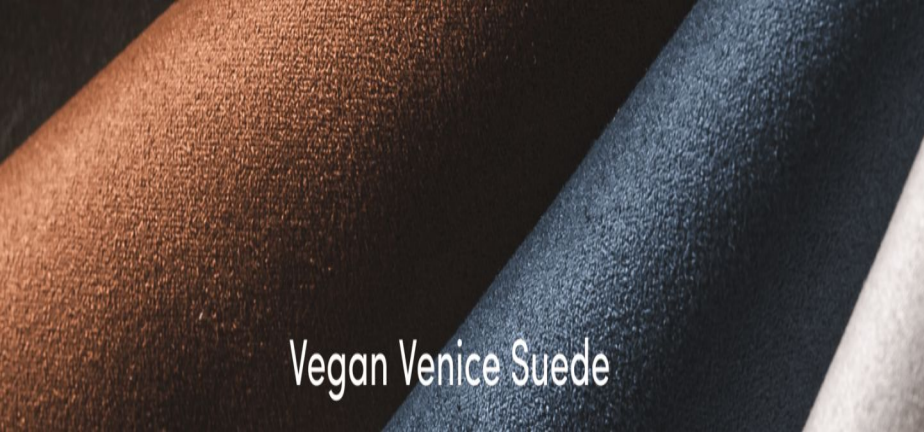
Reya Curved Sectional by Rove Concepts

A modern statement piece that embraces
fluid curves and organic form, redefining
contemporary luxury with seamless elegance
and sculptural sophistication.

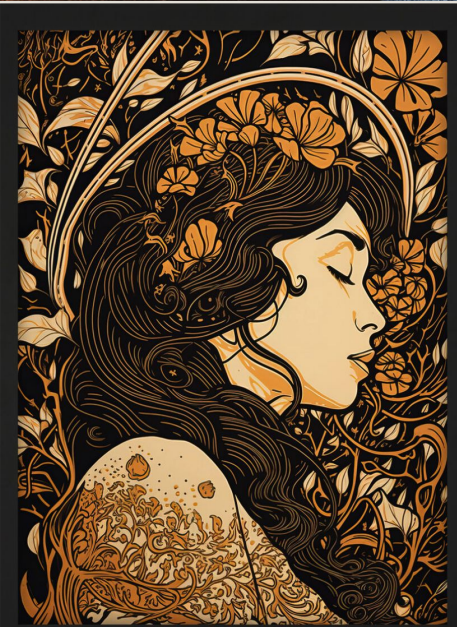


French Curved Blue Sofa by Danbenla Design

A sophisticated blend of classic French elegance and
modern curvature, this sofa features a gracefully curved
silhouette, plush upholstery, and refined detailing,
creating a timeless yet contemporary statement piece.

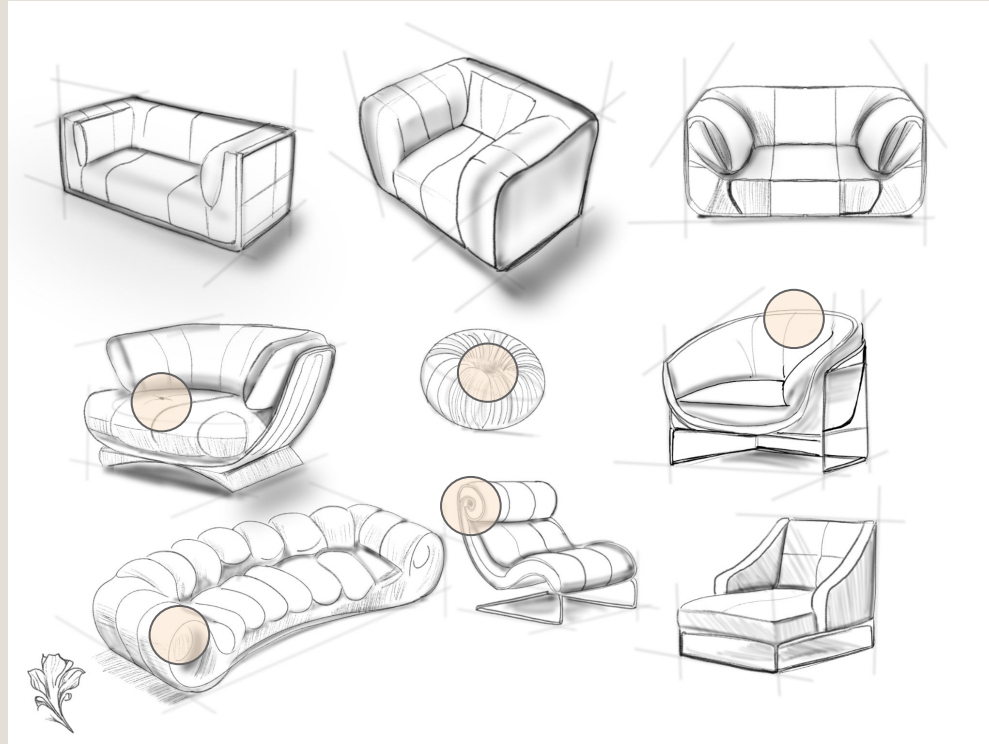


Vegan Venice Suede



UPHOLSTERY

sketches & design ideations



UPHOLSTERY

refined concept development



UPHOLSTERY renders



DINING CHAIR

brief

Objective: Design and share a dining chair concept showcasing refined wood frame detailing and a woven or sling leather seat.

Deliverables:

Slide 1: Market Research – Competition & Inspirational References

Slide 2: Initial Sketches & Design Ideations

Slide 3: Refined Concept Development & Rough Renders

Slide 4: Basic Drawing Showing Understanding of Ergonomics

Note: If you're passionate about ergonomics and human factors, now's your time to shine!

DINING CHAIR

market research & inspirations



Woven Leather Dining Chair by Wisteria

A rustic yet refined piece that highlights traditional craftsmanship, offering a foundation for contemporary interpretations.



Taika Woven Leather Dining Chair by Safavieh

A modern piece that blends sleek simplicity with natural materials, offering a minimalist take on classic woven seating.



Ingrid Woven Arm Chair by Moven

A refined balance of craftsmanship and modern design, seamlessly blending natural textures with a contemporary silhouette.



DINING CHAIR

sketches & design ideations



DINING CHAIR

refined concepts & rough renders



8

7

6

5

4

3

2

1

MISHA VILLANUEVA DESIGN
 VILLA 3620 PERKINS AVE.
 NUEVA CLEVELAND, OH 44114

Project

DINING CHAIR

ASSEMBLY / SUBASSEMBLY / PART

ASSEMBLY

MANAGEMENT

MATTHEW

DRAWINGS

MISHA VILLANUEVA

GENERAL NOTES

ALL DIMENSIONS IN INCHS UNO.
 VIF ALL DIMENSIONS, CONDITIONS PRIOR TO
 CONSTRUCTION

SPECIFICATIONS

F1 VEGAN LEATHER STRAPPING
 W1 WALNUT
 M1 ALUMINUM INSERT
 H1 MMC NUMBER FLAT HEAD SCREWS

STATUS

PRELIMINARY

DATE ISSUE

3-8-2025

SHEET INFO

GENERAL

SHEET NUMBER

101

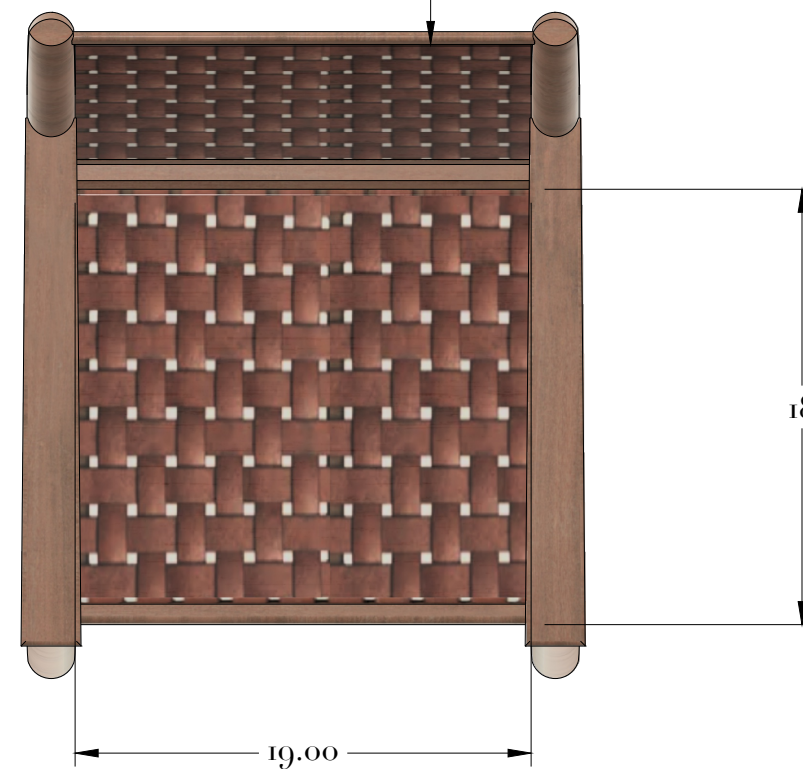
VERSION

A



ISOVIEW
SCALE 1:8

A slightly flexible woven leather seat allows micro-movements that reduce pressure buildup in static seating.
 Weight shifts during sitting, such as crossing legs or leaning to one side, are absorbed by the woven material, reducing localized stress on any single point.

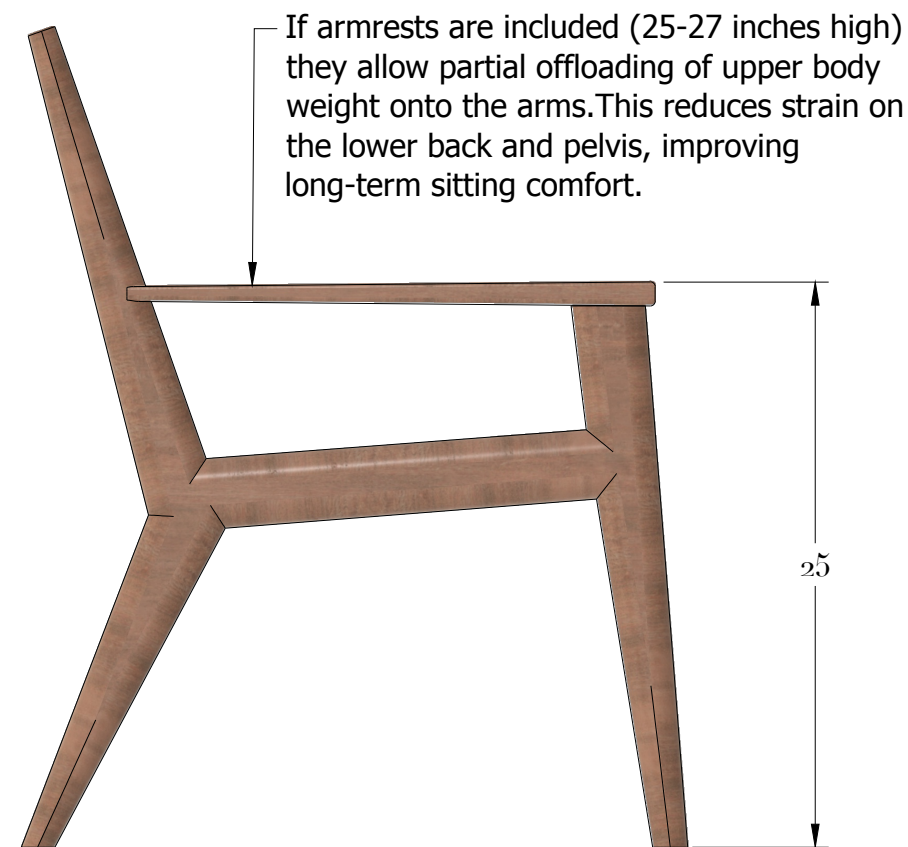


TOP
SCALE 1:8

The seat depth of 16-18 inches ensures that weight is evenly supported across the thighs, preventing excessive pressure at the front edge.



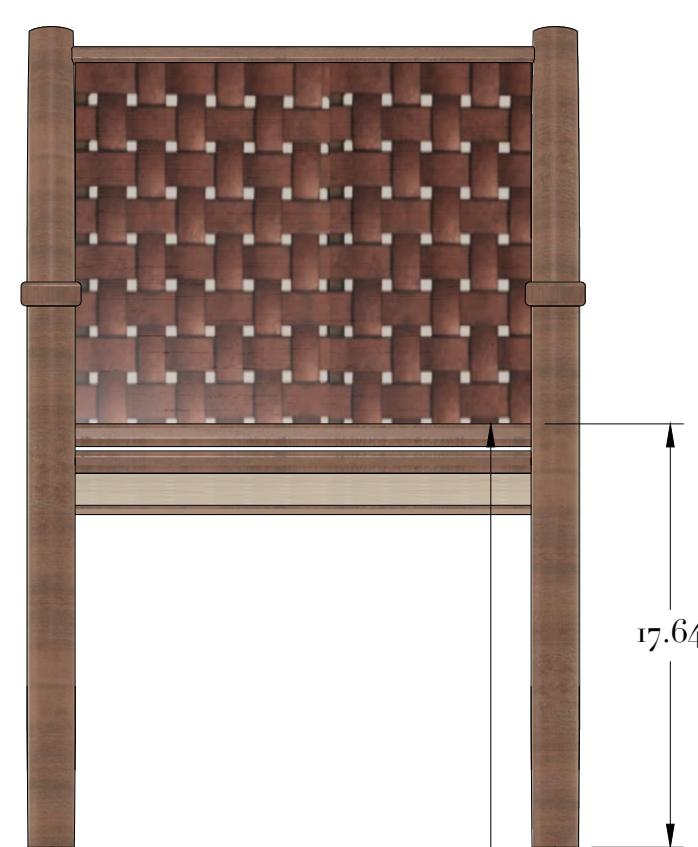
ISOVIEW
SCALE 1:8



LEFT
SCALE 1:8

If armrests are included (25-27 inches high) they allow partial offloading of upper body weight onto the arms. This reduces strain on the lower back and pelvis, improving long-term sitting comfort.

25

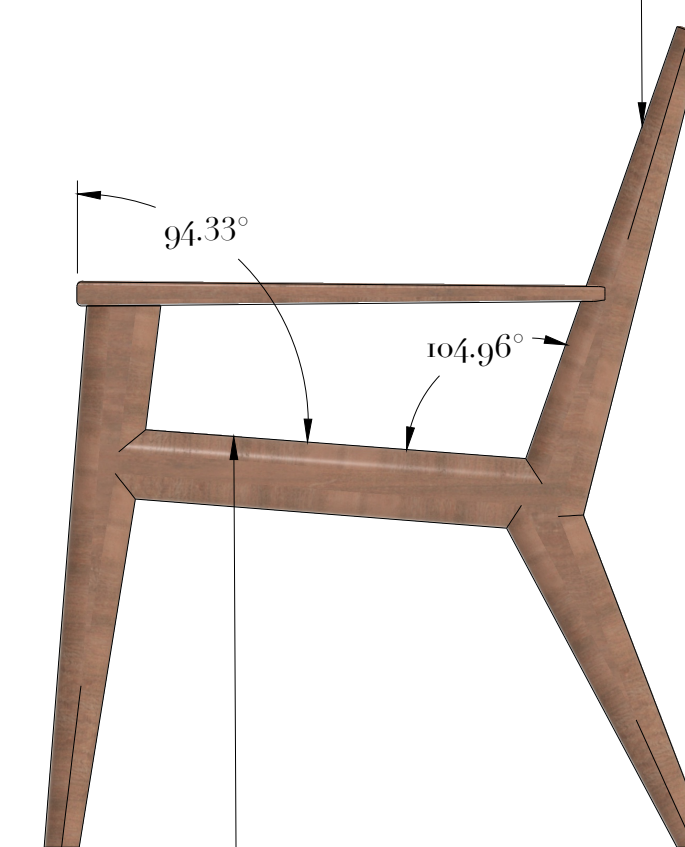


FRONT
SCALE 1:8

An 18-inch seat height ensures about 10-12 inches of clearance between the seat and the underside of the table, providing comfortable legroom.

17.64

The backrest angle of 100-110 degrees helps distribute the user's upper body weight efficiently. Without proper back support, users tend to lean forward, causing a forward weight shift and increased pressure on the thighs and knees.



RIGHT
SCALE 1:8

A seat that declines slightly (by 3-5 degrees backward) helps naturally push the user's lower back into the backrest, improving lumbar support.

94.33°

104.96°

D

D

C

C

B

B

A

A

8

7

6

5

4

3

2

1

LIGHTING brief

Objective: Design and share a pendant light or chandelier concept showcasing unique detailing that could lend itself into becoming a full collection inc. sconce. A manufacturing restriction is that they require metal componentry to be able to assemble upon delivery.

Deliverables:

Slide 1: Market Research – Competition & Inspirational References

Slide 2: Initial Sketches & Design Ideations

Slide 3: Refined Concept Development & Rough Renders

Note: We know lighting design is a specialized field, so if this feels outside your expertise, no worries—just give it your best shot!

LIGHTING

market research & inspirations



Bocci Series 28.37

An innovative yet timeless lighting installation that captures the organic beauty of hand-blown glass, offering a foundation for dynamic and customizable arrangements.



Grand Meridian by Allied Maker

A bold yet refined statement piece that merges precision craftsmanship with timeless elegance, offering a foundation for grand, sculptural lighting compositions.



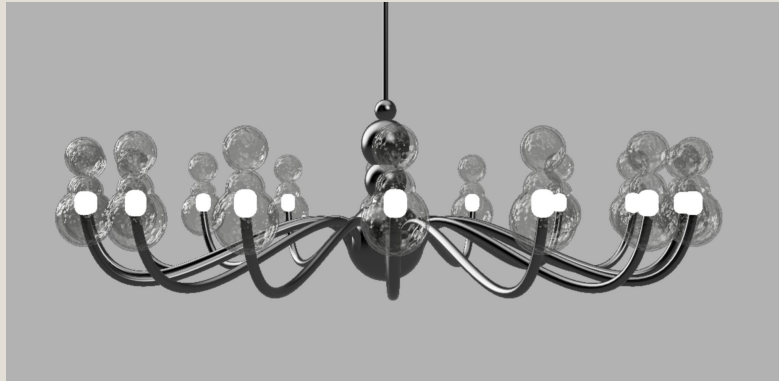
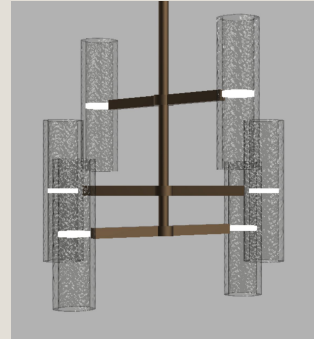
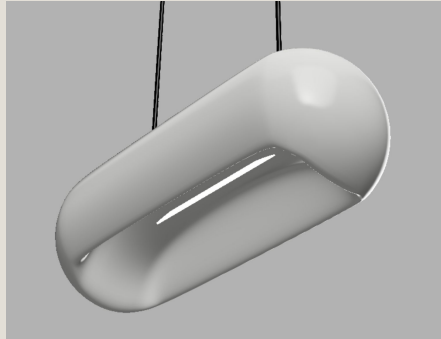
Gridlock LED Chandelier by Roll & Hill

A meticulously engineered yet artfully chaotic fixture that merges industrial precision with contemporary elegance, offering a foundation for bold, sculptural lighting compositions.



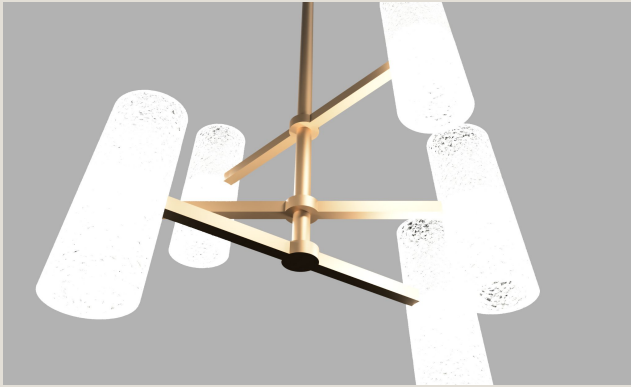
LIGHTING

sketches & design ideations



LIGHTING

Bronze Collection



DESIGN ELEMENTS

1 ELEMENT

A close-up of a **bouclé fabric**, showcasing its soft, textured weave, perfect for adding warmth and dimension to upholstery.



2 ELEMENT

A beautifully grained **wood veneer**, highlighting natural flowing patterns with rich, organic tones.



3 ELEMENT

A stunning **Art Nouveau illustration**, featuring intricate floral motifs, flowing curves, and gilded detailing, embodying the elegance and fluidity of the style.



Thank You



GOOD DESIGN CHANGES EVERYTHING.

FROM A SINGLE FURNITURE PIECE TO AN ENTIRE SPACE, THOUGHTFUL DESIGN CAN TRANSFORM HOW WE LIVE, WORK, AND CONNECT. IF YOU'RE PLANNING A CUSTOM BUILD-OUT OR LOOKING FOR SOMETHING ONE-OF-A-KIND, I'D LOVE TO BRING YOUR VISION TO LIFE. LET'S CREATE SOMETHING LASTING, FUNCTIONAL, AND BEAUTIFUL—TOGETHER.