

# SAUTER ASIA

## Product Information - Tool Holder & Driven tools

VDI, BMT, SLOT TYPE

**SAUTER North America, Inc.**

1116 Centre Rd.  
Auburn Hills, MI 48326

TEL: 734-207-0900

FAX: 734-207-0901 [www.sauter-group.com](http://www.sauter-group.com) [sales@sauter-group.us](mailto:sales@sauter-group.us)



# 目

# 録

## Coupling styles

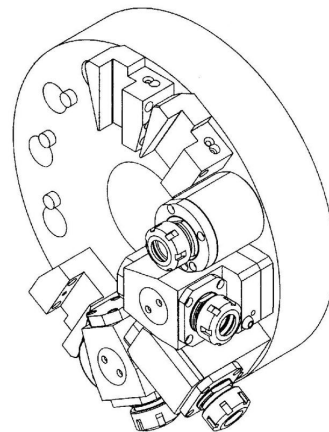
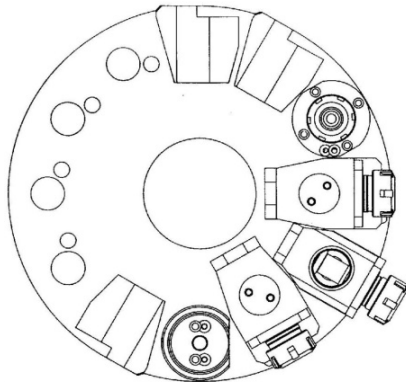


Spline acc. to DIN 5480 with Sauter patented detent

Spline acc. to DIN 5482

Key acc.to DIN 1809

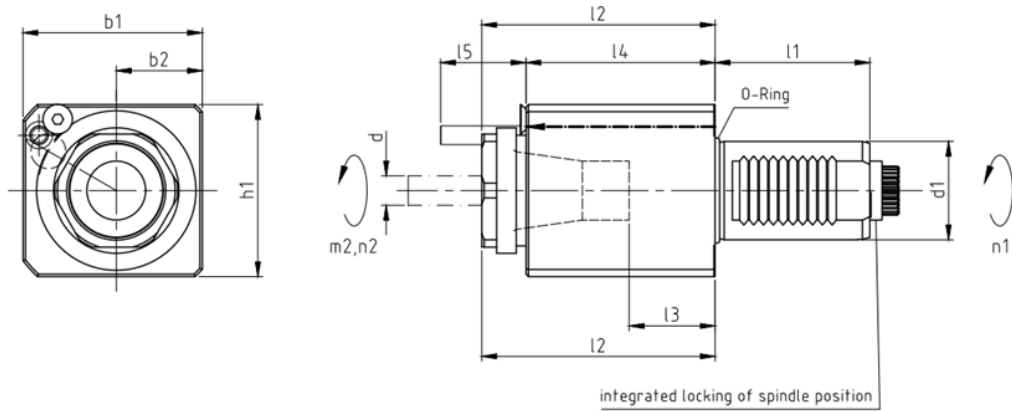
VDI動力刀座 VDI Driven tool	-----	04
VDI固定刀座 VDI Tool holder	-----	21
BMT刀座 BMT Driven tool & tool holder	-----	43
溝槽式刀座 SLOT TYPE Tool holder	-----	55





**0 度動力刀座-外出水 (DIN5480) A.**

Driven tool 0°, collet chuck, i = +1 (1:1), coolant supply external

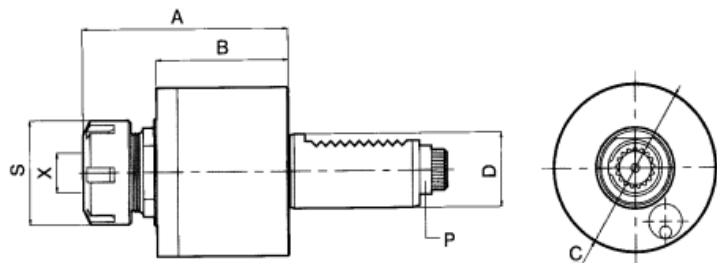


\*To be used for collet DIN 6499 \*collet is not included \*Necessary key included.

shank queue DIN 69880		max. torque	max. tool speed	max. capacity	dimensions							gear ratio	tool location for collets	coupling	Ordering No.
d1	l1	M2	n2	P	b1	b2	h1	l2	l3	l4	l5	i = n1:n2	chucking capacity d	DIN 5480	
mm	mm	mm	min-1	kW	mm	mm	mm	mm	mm	mm	mm				
25	48	20	8000	6	54	27	56	60	21	54.5	-	+1.0	DIN 6499-20 1 - 13	W14x0.8x3 0x16	703087678 DA25-5480-20
30	55	32	7000	8	62	31	64	64.5	19.5	58	25	+1.0	DIN 6499-25 1 - 16	W16x0.8x3 0x18	SA087553 DAC30-5480-25
40	63	63	6000	10	73	35	70	95	35	77	35	+1.0	DIN 6499-32 2 - 20	W20x0.8x3 0x24	SA101714 DA40-5480-32

**0 度動力刀座-外出水 (DIN5480) B.**

Driven tool 0°, collet chuck, i = +1 (1:1), coolant supply external

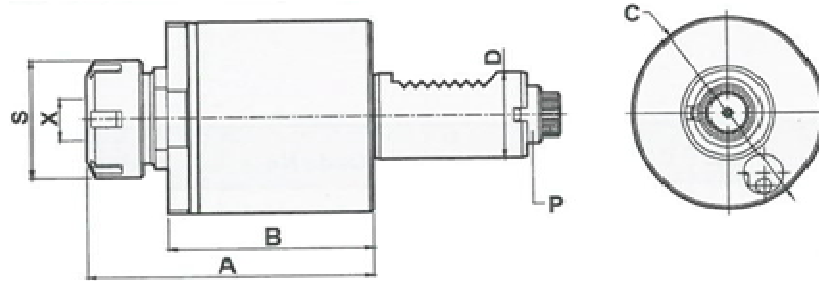


\*To be used for collet DIN 6499 \*collet is not included \*Necessary key included.

ORDER NO.	SIMILAR TO SAUTER ID. NO.	D DIN 69880	X CAPACITY	S	MAX. R.P.M.	A	B	C	P DIN5480
DA50-5480-40	106164	50	DIN 6499-40 3-26	63	6000	122	82	96	W24x1.25

**0 度彈性攻牙動力刀座-外出水 (DIN5480)**

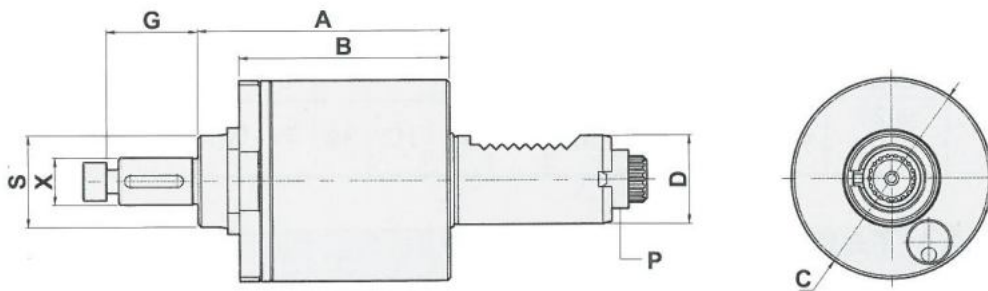
**Driven tool 0°, tapping,  $i=+1$  (1:1), coolant supply external**



ORDER NO.	SIMILAR TO SAUTER ID. NO.	D DIN 69880	X CAPACITY	S	MAX. R.P.M.	A	B	C	P DIN5480
TDA30-5480-16	-	30	DIN 6499-16 1-10	30	3000	108	71	68	W16x0.8
TDAC40-5480-20	-	40	DIN 6499-20 1-13	35	3000	95	55	86	W20x0.8
TDA50-5480-25	-	50	DIN 6499-25 1-16	42	3000	123	81	96	W16x0.8

**0 度銑削動力刀座 -外出水 (DIN5480)**

**Driven tool 0°, shell end milling cutters,  $i=+1$  (1:1), coolant supply external**

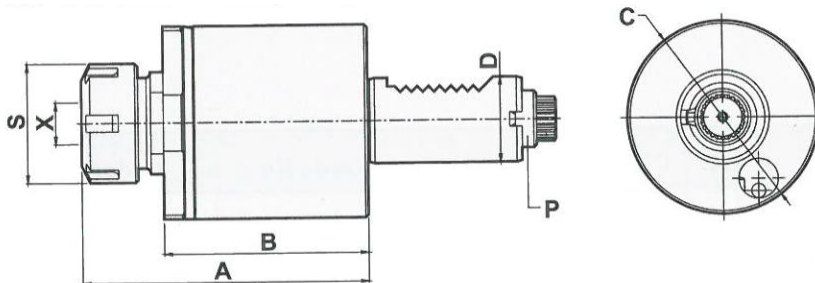


\*To be used for cutter arbor.

ORDER NO.	SIMILAR TO SAUTER ID. NO.	D DIN 69880	X CAPACITY	S	MAX. R.P.M.	A	B	C	G	P DIN5480
DA30-5480-16C	103237	30	DIN 6358 16	32	3000	91.5	70	68	27	W16x0.8
DA40-5480-16C	-	40	DIN 6358 16	32	3000	68.5	55	86	27	W20x0.8
DA40-5480-22C	102181	40	DIN 6358 22	32	3000	68.5	55	86	31	W20x0.8

0 度動力刀座-中心出水 (DIN5480)

Driven tool 0°, collet chuck, i=+1 (1:1), coolant supply external and internal

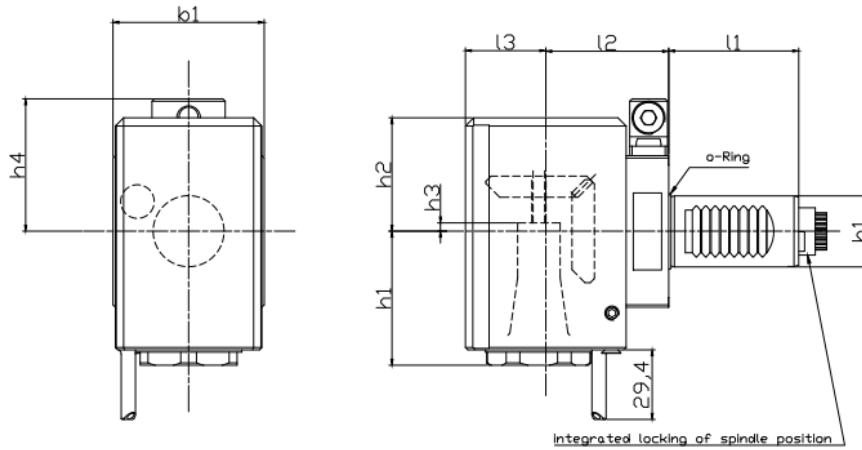


\*To be used for collet DIN 6499 \*collet is not included \*Necessary key included.

ORDER NO.	SIMILAR TO SAUTER ID. NO.	D DIN 69880	X CAPACITY	S	MAX. R.P.M.	A	B	C	P DIN5480
CW-DA30-5480-25	108980	30	DIN 6499-25 1-16	42	5000	102	72	68	W16x0.8
CW-DA40-5480-32	111384	40	DIN 6499-32 2-20	50	5000	109	85	86	W20x0.8

90 度動力刀座-外出水 (DIN5480) A.

Driven tool 90°, collet chuck, i=-1 (1:1), coolant supply external

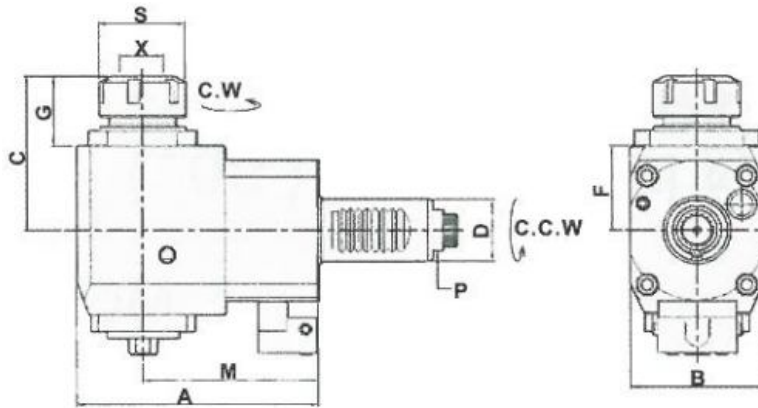


shank queue DIN 69880	max. torque	max. tool speed	max. capacity	dimensions									gear ratio	tool location for collets	coupling	Ordering No.	
				d1	l1	M2	n2	P	b1	h1	h2	h3					h4
mm	mm	mm	min-1	kW	mm	mm	mm	mm	mm	mm	mm	mm	mm				
30	55	32	7000	8	64	56.5	48	3.5	56	55	31	25	+1.0	DIN 6499-25 1 - 16	W16x0.8 x30x18	SA087498 FL30-5480-25-55	
30	55	32	7000	8	64	56.5	48	3.5	56	55	31	25	+1.0	DIN 6499-25 1 - 16	W16x0.8 x30x18	SA087499 FR30-5480-25-55	
40	63	63	6000	10	76	71	55	-11	65.5	100	35	35	+1.0	DIN 6499-32 2 - 20	W20x0.8 x30x24	SA101975 FL40-5480-32-100	
40	63	63	6000	10	76	71	55	-11	65.5	100	35	35	+1.0	DIN 6499-32 2 - 20	W20x0.8 x30x24	SA101716 FR40-5480-32-100	

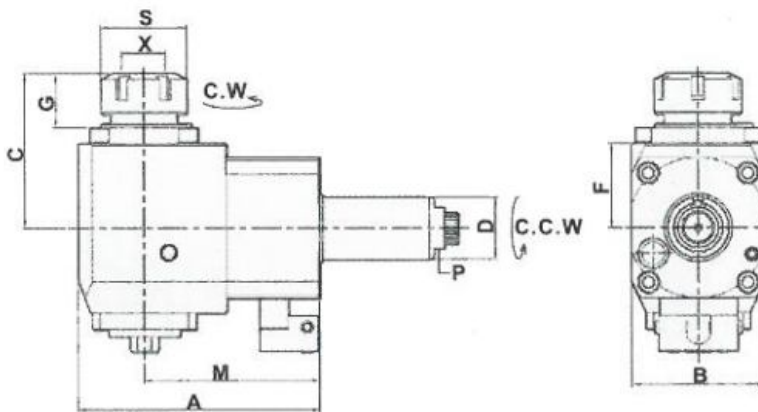


90 度動力刀座-外出水 (DIN5480) B.

Driven tool 90°, collet chuck, i=-1 (1:1), coolant supply external



MODE : FL  
LEFT-HAND



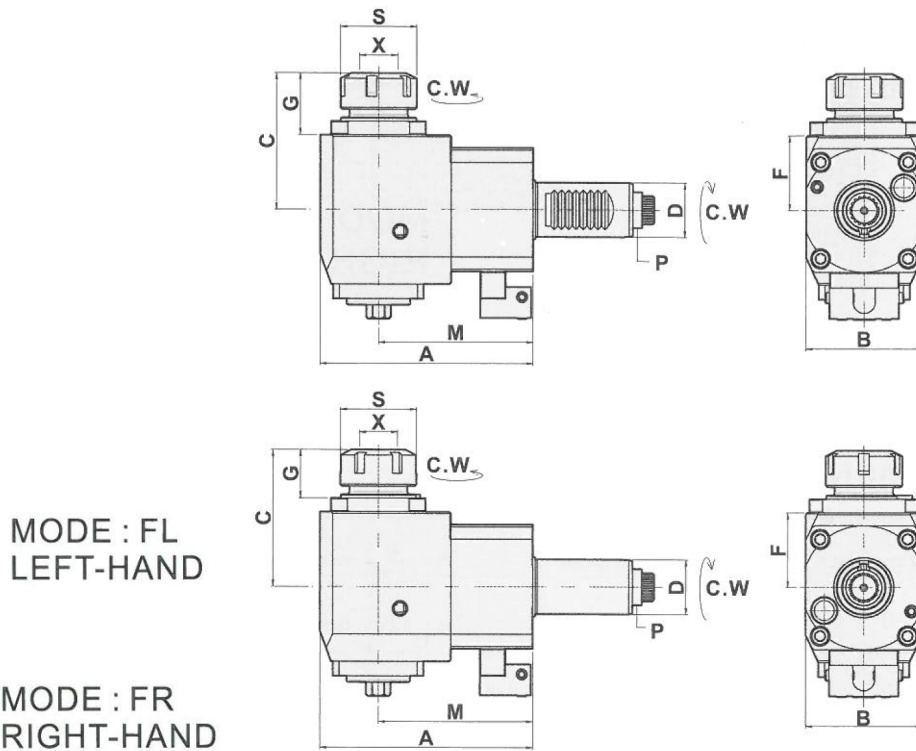
MODE : FR  
RIGHT-HAND

\*To be used for collet DIN 6499 \*collet is not included \*Necessary key included.

ORDER NO.	SIMILAR TO SAUTER ID. NO.	D DIN 69880	X CAPACITY	S	MAX. R.P.M.	A	B	C	F	G	M	P DIN5480
FR30-5480-25-85 FL30-5480-25-85	087519 087518	30	DIN 6499-25 1-16	42	5000	117	64	74.5	41	26	85	W16x0.8
FR30-5480-25-100 FL30-5480-25-100	087521 087520	30	DIN 6499-25 1-16	42	5000	127	64	74.5	41	26	100	W16x0.8
FR40-5480-32-65 FL40-5480-32-65		40	DIN 6499-32 2-20	50	5000	99	80	71	40	23	65	W20x0.8
FR40-5480-32-85 FL40-5480-32-85		40	DIN 6499-32 2-20	50	5000	119	80	71	40	23	85	W20x0.8

90 度動力刀座-外出水 (DIN5480) C.

Driven tool 90°, collet chuck,  $i = +1$  (1:1), coolant supply external

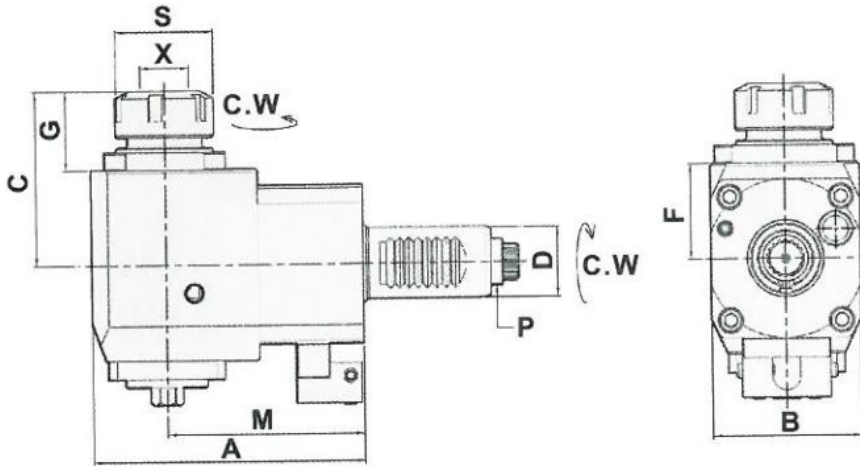


\*To be used for collet DIN 6499 \*collet is not included \*Necessary key included.

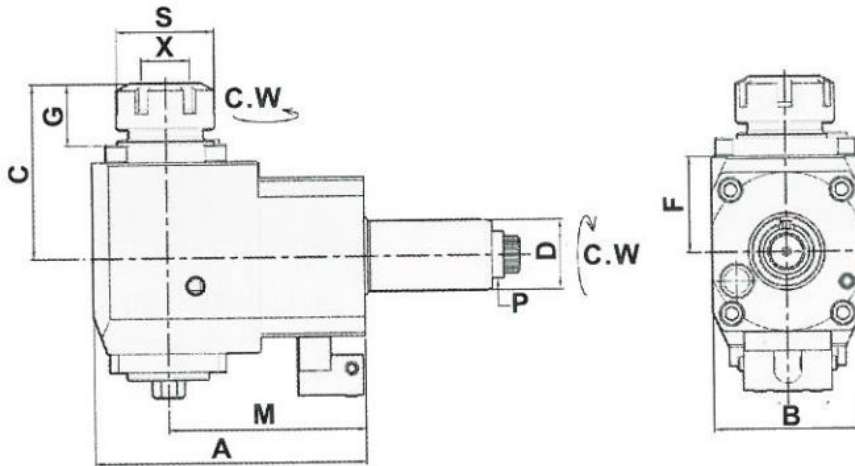
ORDER NO.	SIMILAR TO SAUTER ID. NO.	D DIN 69880	X CAPACITY	S	MAX. R.P.M.	A	B	C	F	G	M	P DIN5480
NFR40-5480-32-65 NFL40-5480-32-65		40	DIN 6499-32 2-20	50	5000	99	80	71	40	23	65	W20x0.8
NFR40-5480-32-85 NFL40-5480-32-85	101716N 101975N	40	DIN 6499-32 2-20	50	5000	119	80	71	40	23	85	W20x0.8
NFR40-5480-40-100 NFL40-5480-40-100		40	DIN 6499-32 2-20	50	5000	134	80	71	40	23	100	W20x0.8
NFR50-5480-40-75 NFL50-5480-40-75		50	DIN 6499-40 3-26	63	5000	115	88	102	56	35	75	W24x1.25
NFR50-5480-40-100 NFL50-5480-40-100	122011N 122010N	50	DIN 6499-40 3-26	63	5000	140	88	102	56	35	100	W24x1.25

90 度彈性攻牙動力刀座-外出水 (DIN5480) A.

Driven tool 90°, tapping,  $i = +1$  (1:1), coolant supply external



MODE : FL  
LEFT-HAND



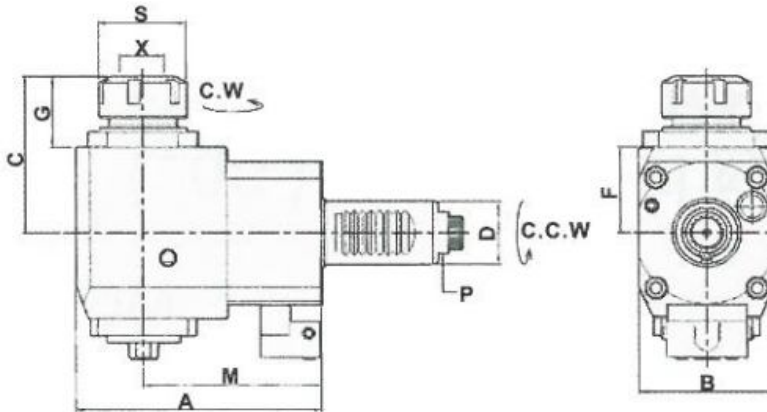
MODE : FR  
RIGHT-HAND

\*Necessary key included.

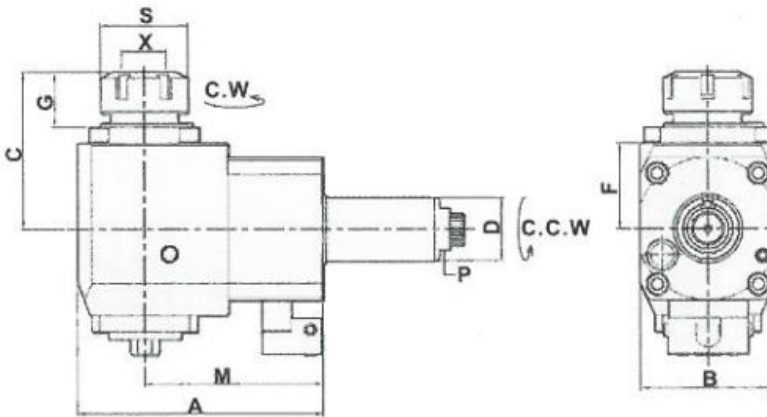
ORDER NO.	SIMILAR TO SAUTER ID. NO.	D DIN 69880	X CAPACITY	S	MAX. R.P.M.	A	B	C	F	G	M	P DIN5480
TFR30-5480-25-1655 TFL30-5480-25-1655		30	DIN 6499-25 1-16	30	3000	97	64	75	41	30	55	W16x0.8
TFR30-5480-25-1685 TFL30-5480-25-1685		30	DIN 6499-25 1-16	30	3000	117	64	75	41	30	85	W16x0.8
TFR30-5480-25-16100 TFL30-5480-25-16100		30	DIN 6499-25 1-16	30	3000	127	64	75	41	30	100	W16x0.8
TFR40-5480-32-2065 TFL40-5480-32-2065		40	DIN 6499-32 2-20	35	3000	99	80	70	40	25	65	W20x0.8
TFR40-5480-32-2085 TFL40-5480-32-2085		40	DIN 6499-32 2-20	35	3000	119	80	70	40	25	85	W20x0.8
TFR40-5480-32-20100 TFL40-5480-32-20100		40	DIN 6499-32 2-20	35	3000	134	80	72	40	25	100	W20x0.8

90 度彈性攻牙動力刀座-外出水 (DIN5480) B.

Driven tool 90°, tapping, i=-1 (1:1), coolant supply external



MODE : FL  
LEFT-HAND



MODE : FR  
RIGHT-HAND

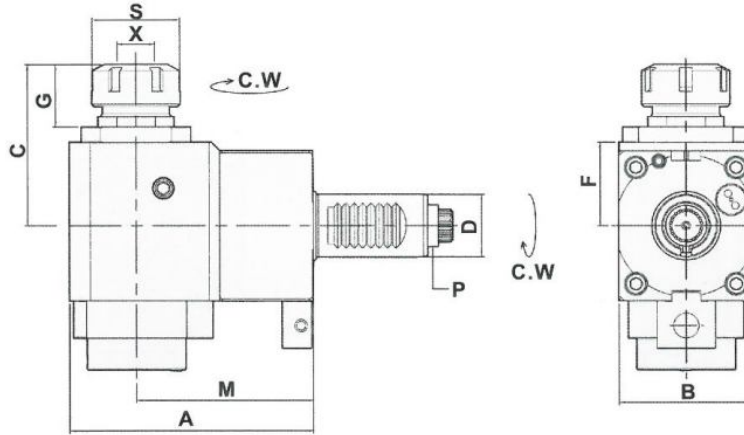
\*Necessary key included.

ORDER NO.	SIMILAR TO SAUTER ID. NO.	D DIN 69880	X CAPACITY	S	MAX. R.P.M.	A	B	C	F	G	M	P DIN5480
NFR40-5480-32-65 NFL40-5480-32-65		40	DIN 6499-32 2-20	35	3000	99	80	70	40	25	65	W20x0.8
NFR40-5480-32-85 NFL40-5480-32-85		40	DIN 6499-32 2-20	35	3000	119	80	70	40	25	85	W20x0.8
NFR40-5480-40-100 NFL40-5480-40-100		40	DIN 6499-32 2-20	35	3000	134	80	70	40	25	100	W20x0.8
NFR50-5480-40-100 NFL50-5480-40-100		50	DIN 6499-40 3-26	42	3000	140	100	118	56	51	100	W24x1.25

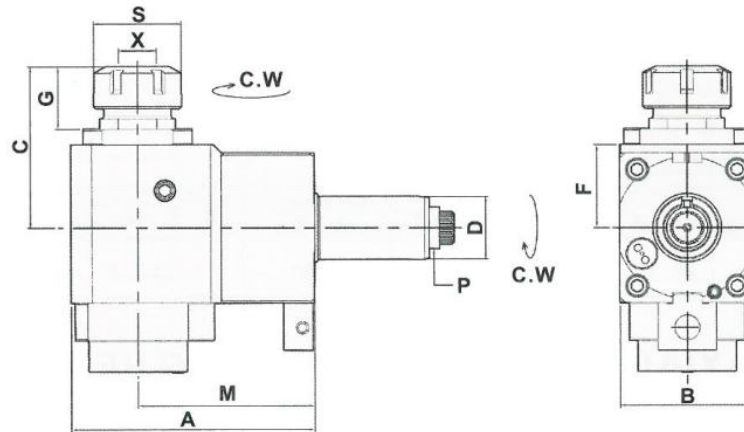
90 度動力刀座-中心出水 (DIN5480) A.

Driven tool 90°, collet chuck,  $i=+1$  (1:1), coolant supply external and internal

MODE : FL  
LEFT-HAND



MODE : FR  
RIGHT-HAND



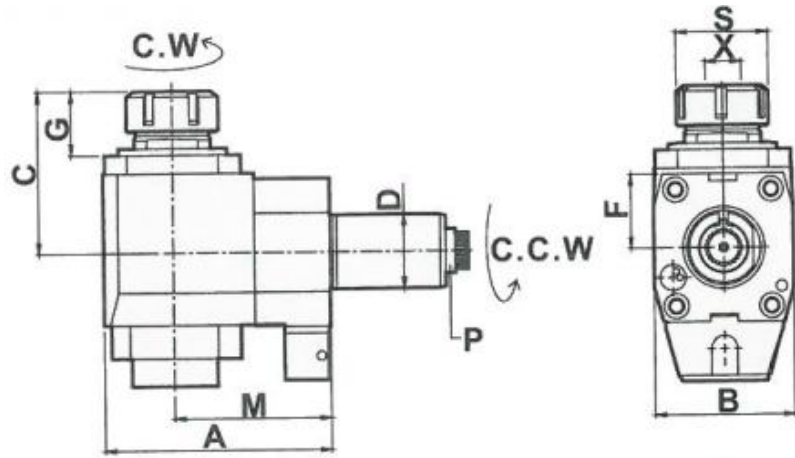
\*To be used for collet DIN 6499 \*collet is not included \*Necessary key included.

ORDER NO.	SIMILAR TO SAUTER ID. NO.	D DIN 69880	X CAPACITY	S	MAX. R.P.M.	A	B	C	F	G	M	P DIN5480
CW-NFR30-5480-25-55	109390	30	DIN 6499-25	42	4000	87	64	77.5	36	30	55	W16x0.8
CW-NFL30-5480-25-55	109393		1-16									
CW-NFR30-5480-25-85	109403	30	DIN 6499-25	42	4000	132	64	77.5	36	30	85	W16x0.8
CW-NFL30-5480-25-85	109404		1-16									
CW-NFR30-5480-25-100	109407	30	DIN 6499-25	42	4000	132	64	77.5	36	30	100	W16x0.8
CW-NFL30-5480-25-100	109409		1-16									

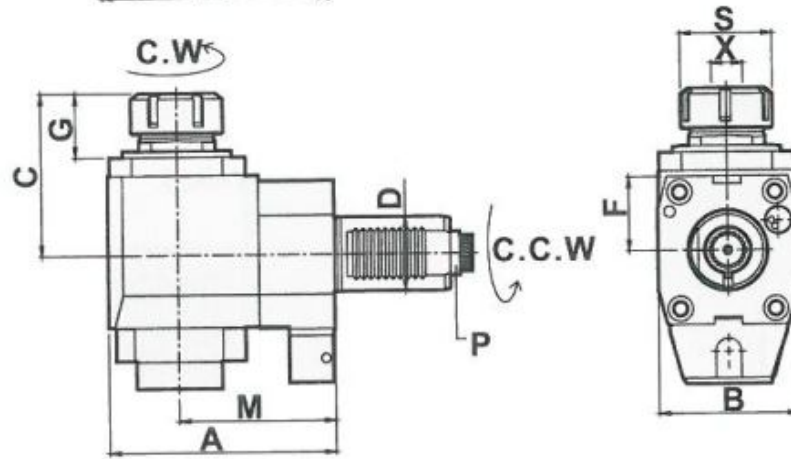
90 度動力刀座-中心出水 (DIN5480) B.

Driven tool 90°, collet chuck, i=-1 (1:1), coolant supply external and internal

MODE : FR  
RIGHT-HAND



MODE : FL  
LEFT-HAND

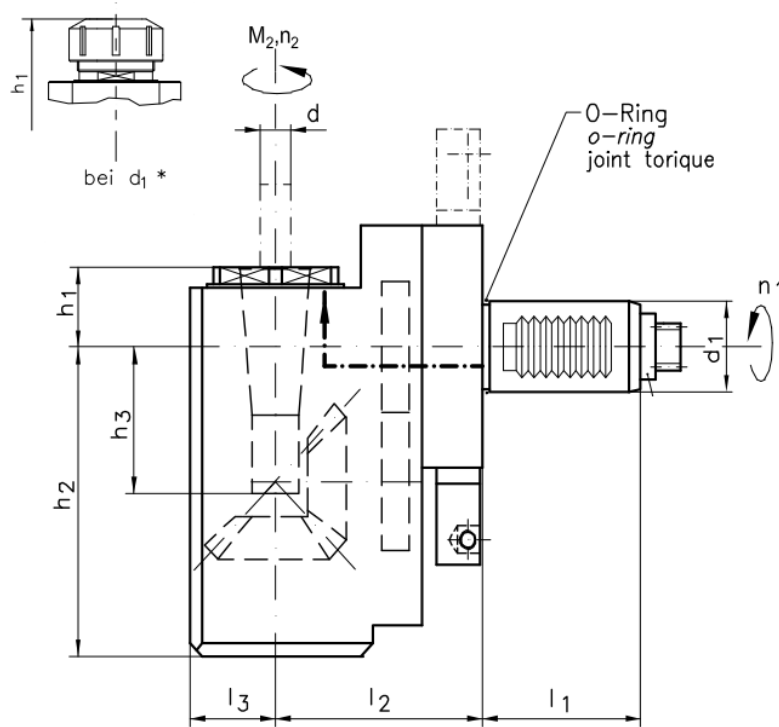


\*To be used for collet DIN 6499 \*collet is not included \*Necessary key included.

ORDER NO.	SIMILAR TO SAUTER ID. NO.	D DIN 69880	X CAPACITY	S	MAX. R.P.M.	A	B	C	F	G	M	P DIN5480
CW-FR40-5480-32-65 CW-FL40-5480-32-65		40	DIN 6499-32 2-20	50	5000	103	76	89.5	40	36.5	65	W20x0.8
CW-FR40-5480-32-85 CW-FL40-5480-32-85	109436 108710	40	DIN 6499-32 2-20	50	5000	123	76	89.5	40	36.5	85	W20x0.8
CW-FR40-5480-32-100 CW-FL40-5480-32-100		40	DIN 6499-32 2-20	50	5000	133	76	89.5	40	36.5	100	W20x0.8

90 度動力刀座-後縮,外出水 (DIN5480) A.

Driven tool 90°, rear offset, collet chuck,  $i = +1$  (1:1), coolant supply external



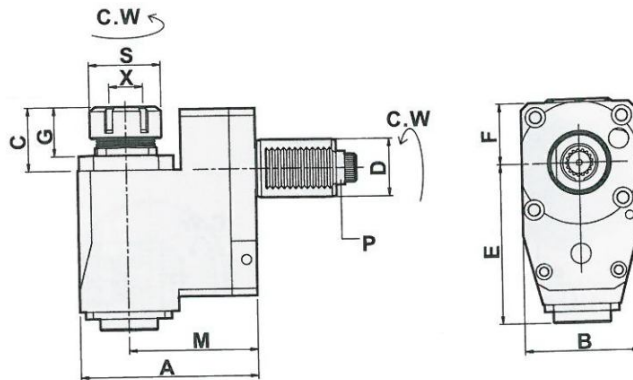
\*To be used for collet DIN 6499 \*collet is not included \*Necessary key included.

shank queue DIN 69880		max. torque	max. tool speed	max. capac ity	dimensions							gear ratio	tool location for collets	coupling	Ordering No.
d1 mm	l1 mm	M2 mm	n2 min-1	P kW	b1 mm	b2 mm	h1 mm	l2 mm	l3 mm	l4 mm	l5 mm	$i = n1:n2$	chucking capacity d	DIN 5480	
25	48	20	6000	6	54	13.5	79	41	48	75	28-	+1.0	DIN 6499-20 1 - 13	W14x0.8 x30x16	703087683 BR25-5480-20-75

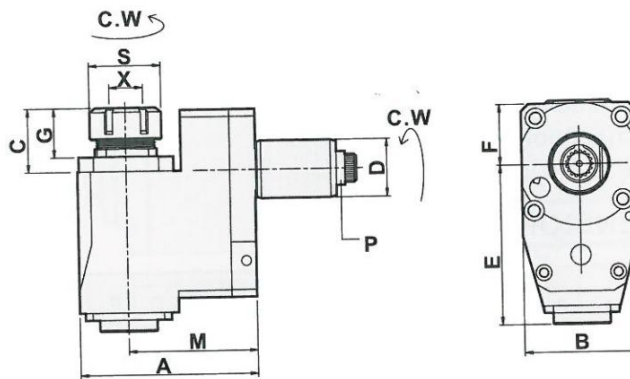
90 度動力刀座-後縮, 外出水 (DIN5480) B.

Driven tool 90°, rear offset, collet chuck,  $i=+1$  (1:1), coolant supply external

MODE : BL  
LEFT-HAND



MODE : BR  
RIGHT-HAND



\*To be used for collet DIN 6499 \*collet is not included \*Necessary key included.

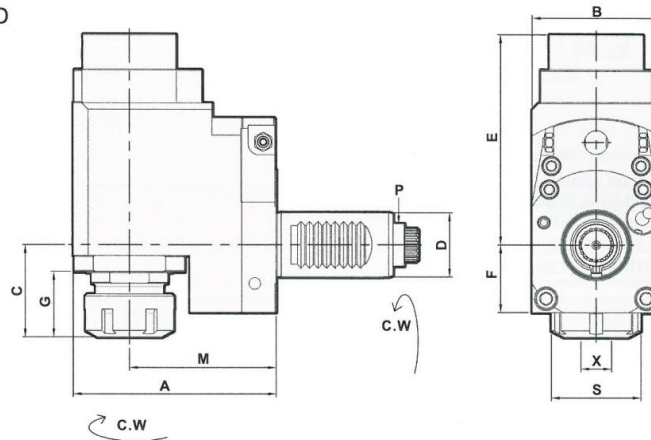
ORDER NO.	SIMILAR TO SAUTER ID. NO.	D DIN 69880	X CAPACITY	S	MAX. R.P.M.	A	B	C	E	F	G	M	P DIN5480
BR30-5480-25-72 BL30-5480-25-72	087536 087535	30	DIN 6499-25 1-16	42	5000	96	60	43	98	31.5	30.5	72	W16x0.8
BR40-5480-32-90 BL40-5480-32-90	102182 102183	40	DIN 6499-32 2-20	50	5000	124	80	44	110	42	34	90	W20x0.8
BR50-5480-40-90 BL50-5480-40-90	106652 106672	50	DIN 6499-40 3-26	63	5000	129	86	49	112	42	39	90	W24x1.25



### 90 度徑向動力刀座-後縮,中心出水 (DIN5480)

Driven tool 90°, rear offset, collet chuck, i=+1 (1:1), coolant supply external and internal

MODE : BR  
RIGHT-HAND

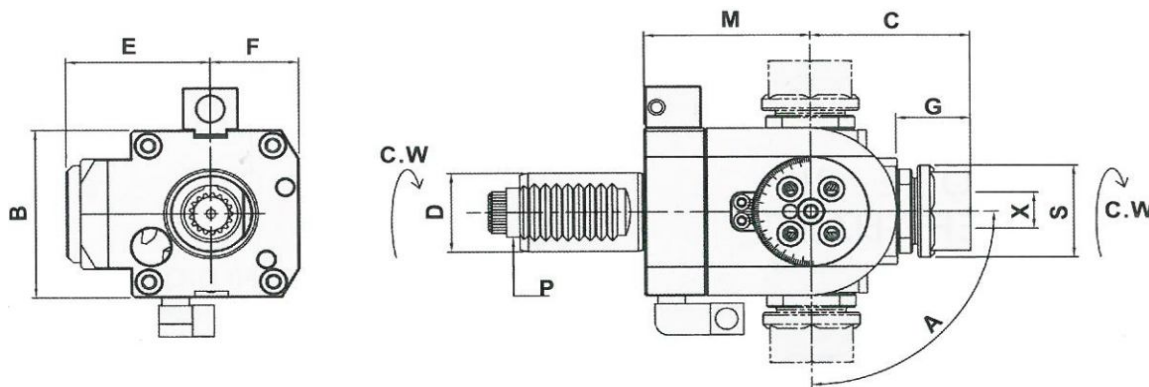


\*To be used for collet DIN 6499 \*collet is not included \*Necessary key included.

ORDER NO.	SIMILAR TO SAUTER ID. NO.	D DIN 69880	X CAPACITY	S	MAX. R.P.M.	A/B/C/E/F/G/M	P DIN5480
CW-BR30-5480-25-72	109432	30	DIN 6499-25 1-16	42	5000	96/60/43/98/31.5/30.5/72	W16x0.8

### 萬向動力刀座-外出水 (DIN5480)

Driven tool ±90° angle adjustable, i=+1(1:1), coolant supply external

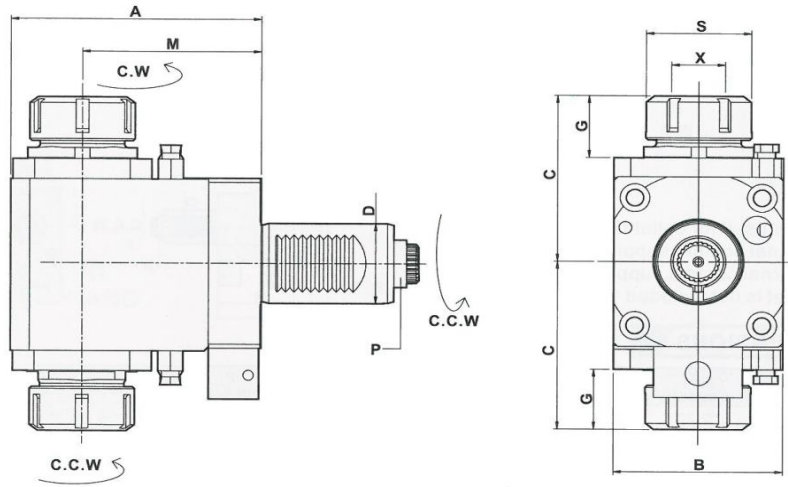


\*To be used for collet DIN 6499 \*collet is not included \*Necessary key included.

ORDER NO.	SIMILAR TO SAUTER ID. NO.	D DIN 69880	X CAPACITY	S	MAX. R.P.M.	A	B	C	E	F	G	M	P DIN5480
DA30-5480-20B	132589	30	DIN 6499-20 1-13	35	4000	±90°	64	59	54	32	27	67	W16x0.8
DA40-5480-25B	132591	40	DIN 6499-25 1-16	42	4000	±90°	76	65	65	38	29	70	W20x0.8
DA50-5480-25B	132592	50	DIN 6499-25 1-16	42	4000	±90°	80	80	76	45	32	85	W24x1.25

90 度動力刀座-雙頭, 外出水 (DIN5480)

Driven tool 90°, 2 collet chucks,  $i=-1(1:1)$ , coolant supply external

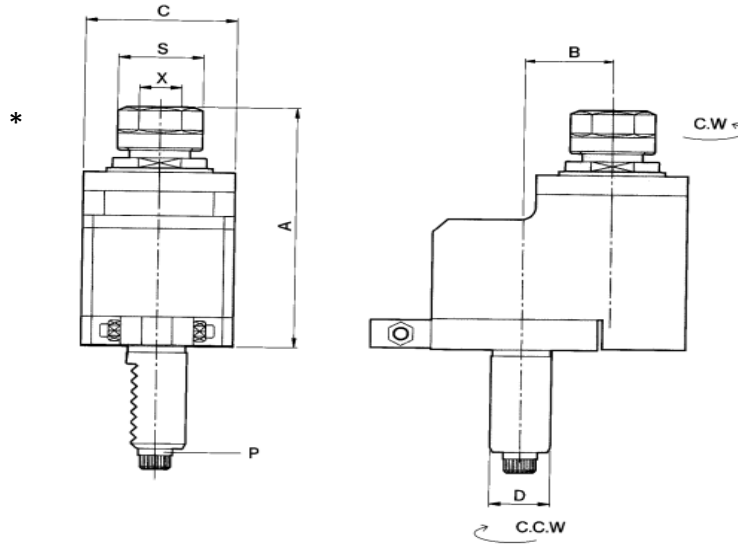


\*To be used for collet DIN 6499 \*collet is not included \*Necessary key included.

ORDER NO.	SIMILAR TO SAUTER ID. NO.	D DIN 69880	X CAPACITY	S	MAX. R.P.M.	A	B	C	G	M	P DIN5480
DF30-5480-25-85D	105465	30	DIN 6499-25 1-16	42	4000	112	64	66	26.5	85	W16x0.8
DF30-5480-25-100D	105466	30	DIN 6499-25 1-16	42	4000	127	64	66	26.5	100	W16x0.8
DF40-5480-32-85D	105818A	40	DIN 6499-32 2-20	50	4000	119	80	82	28	85	W20x0.8
DF40-5480-32-100D	105818	40	DIN 6499-32 2-20	50	4000	134	80	82	28	100	W20x0.8
DF40-5480-32-120D	105819	40	DIN 6499-32 2-20	50	4000	154	80	84	30	120	W20x0.8

0 度動力刀座-偏心, 外出水 (DIN5480)

Driven tool 0°, with offset axis, collet chuck,  $i=+1(1:1)$  /  $i=+2(1:2)$ , coolant supply external

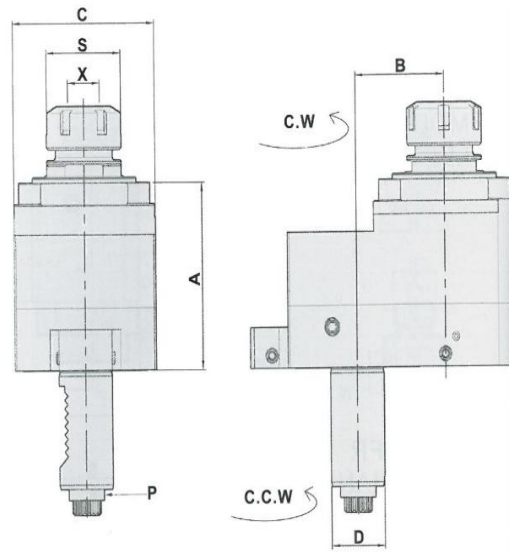


\*To be used for collet DIN 6499 \*collet is not included \*Necessary key included.

ORDER NO.	SIMILAR TO SAUTER ID. NO.	D DIN 69880	X CAPACITY	S	MAX. R.P.M.	I	A	B	C	P DIN5480
DA30-5480-25-29	-	30	DIN 6499-25 1-16	42	4000	1:1	100	29	60	W16x0.8
*DA30-5480-25-29-1	-	30	DIN 6499-25 1-16	42	8000	1:2	100	29	60	W16x0.8
DA30-5480-25-50	-	30	DIN 6499-25 1-16	42	4000	1:1	100	50	75	W16x0.8
*DA30-5480-25-50-1	-	30	DIN 6499-25 1-16	42	8000	1:2	106	50	75	W16x0.8
DA40-5480-32-50	-	40	DIN 6499-32 2-20	50	4000	1:1	125	50	75	W20x0.8
DA50-5480-40-65	-	50	DIN 6499-40 3-26	63	4000	1:1	123	65	86	W24X1.25

0 度動力刀座-偏心, 中心出水 (DIN5480)

Driven tool 0°,with offset axis, collet chuck, i=+1(1:1), coolant supply external and internal

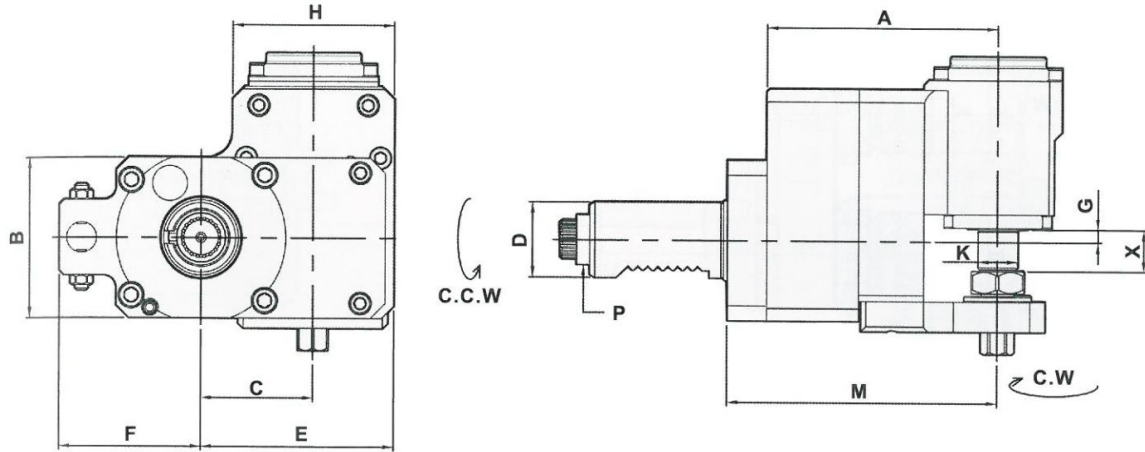


\*To be used for collet DIN 6499 \*collet is not included \*Necessary key included.

ORDER NO.	SIMILAR TO SAUTER ID. NO.	D DIN 69880	X CAPACITY	S	MAX. R.P.M.	I	A	B	C	P DIN5480
CWDA30-5480-25-50	-	30	DIN 6499-25 1-16	42	4000	1:1	122.5	50	80	W16x0.8

90 度側銑動力刀座, 外出水 (DIN5480)  $i=2/3$  倍減速

Driven tool 90°, for circular saw blades,  $i=-2(2:1)/-3(3:1)$ , coolant supply external



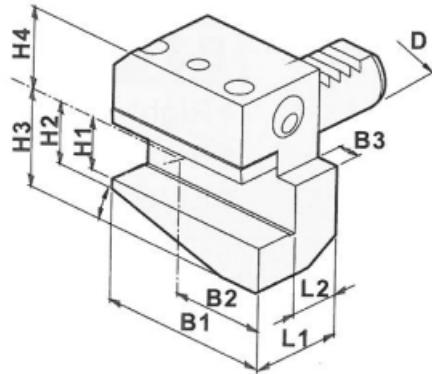
\*To be used for collet DIN 6499 \*collet is not included \*Necessary key included.

ORDER NO.	SIMILAR TO SAUTER ID. NO.	D DIN 69880	X CAPACITY	MAX. R.P.M.	I	A	B	C	E	F	G	H	K	M	P DIN5480
BR30-5480-16C-2 BL30-5480-16C-2	116924 117062	30	1-16	3000	2:1	133	64	45	77.5	49	5	65	16	108.5	W16x0.8
BR30-5480-25.4C-3 BL30-5480-25.4C-3	116924A 117062A	30	1-16	3000	3:1	133	64	45	77.5	49	5	65	25.4	108.5	W16x0.8
BR40-5480-16C-3 BL40-5480-16C-3	117054 117058	40	1-16	3000	3:1	136	70	45	77.5	75	5	65	16	110.5	W20x0.8
BR40-5480-25.4C-3 BL40-5480-25.4C-3	117054A 117058A	40	1-16	3000	3:1	136	70	45	77.5	75	5	65	25.4	110.5	W20x0.8

# B1

外徑刀座-刀片向上,右

Turning Tool DIN 99 880 Part3 Form B1 right hand, short

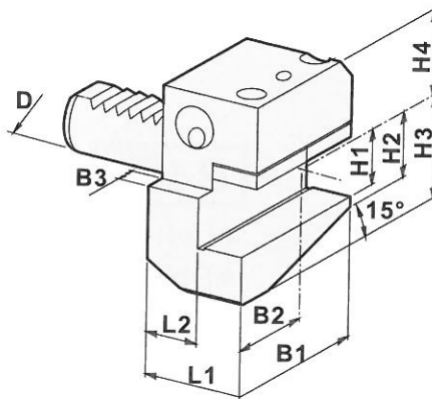


ORDER NO.	SIMILAR TO SAUTER ID. NO.	D	B1	B2	B3	H1	H2	H3	H4	L1	L2
B1-20x16	113889	20	55	30	7	16	19	30	25	30	16
B1-30x20	113893	30	70	35	10	20	26	38	28	40	22
B1-40x25	113895	40	85	42.5	12.5	25	35	48	32.5	44	22
B1-50x32	113896	50	100	50	16	32	42	60	35	55	30
B1-60x32	113897	60	125	62.5	16	32	46	62.5	42.5	60	30

# B2

外徑刀座-刀片向上,左

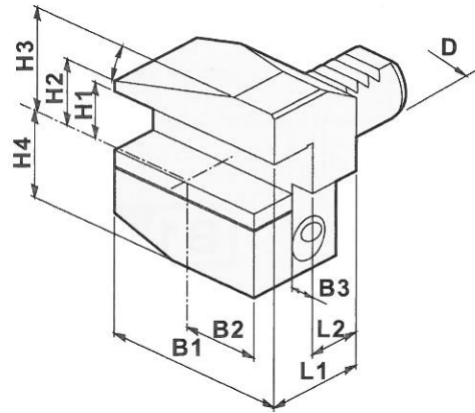
Turning Tool DIN 99 880 Part3 Form B2 left hand, short



ORDER NO.	SIMILAR TO SAUTER ID. NO.	D	B1	B2	B3	H1	H2	H3	H4	L1	L2
B2-20x16	113900	20	55	30	7	16	19	30	25	30	16
B2-30x20	113904	30	70	35	10	20	26	38	28	40	22
B2-40x25	113906	40	85	42.5	12.5	25	35	48	32.5	44	22
B2-50x32	113907	50	100	50	16	32	42	60	35	55	30
B2-60x32	113908	60	125	62.5	16	32	46	62.5	42.5	60	30

**B3**

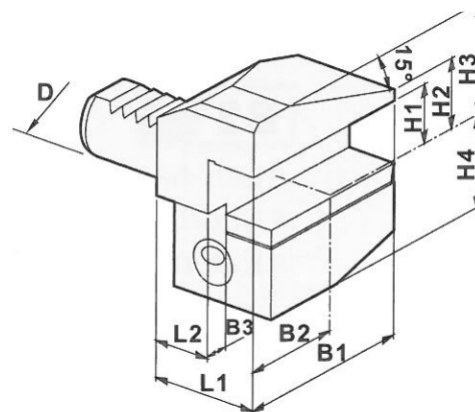
外徑刀座-刀片向下,右  
Turning Tool Overhead DIN 69 880 Part3 Form B3 right hand, short



ORDER NO.	SIMILAR TO SAUTER ID. NO.	D	B1	B2	B3	H1	H2	H3	H4	L1	L2
B3-20x16	113911	20	55	30	7	16	19	30	25	30	16
B3-25x16	113913	25	55	30	7	16	22	30	25	30	16
B3-30x20	113915	30	70	35	10	20	22	38	35	40	22
B3-40x25	113917	40	85	42.5	12.5	25	30	48	42.5	44	22
B3-50x32	113918	50	100	50	16	32	35	60	50	55	30
B3-60x32	113919	60	125	62.5	16	32	42.5	62.5	62.5	60	30

**B4**

外徑刀座-刀片向下,左  
Turning Tool Overhead DIN 69 880 Part3 Form B4 left hand, short

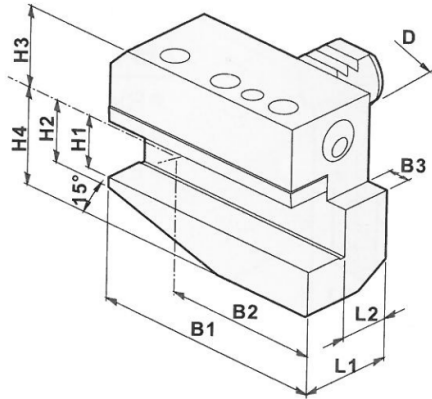


ORDER NO.	SIMILAR TO SAUTER ID. NO.	D	B1	B2	B3	H1	H2	H3	H4	L1	L2
B4-20x16	113922	20	55	30	7	16	19	30	25	30	16
B4-30x20	113926	30	70	35	10	20	22	38	35	40	22
B4-40x25	113928	40	85	42.5	12.5	25	30	48	42.5	44	22
B4-50x32	113929	50	100	50	16	32	35	60	50	55	30
B4-60x32	113930	60	125	62.5	16	32	42.5	62.5	62.5	60	30

**B5**

外徑刀座加長型-刀片向上,右

Turning Tool DIN 69 880 Part3 Form B5 right hand, long

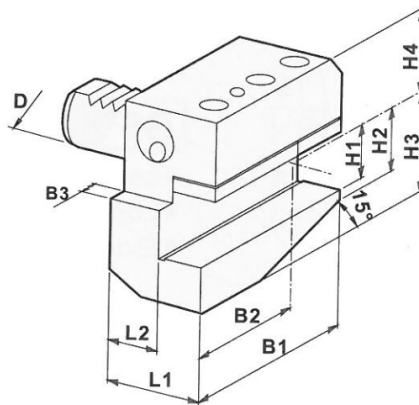


ORDER NO.	SIMILAR TO SAUTER ID. NO.	D	B1	B2	B3	H1	H2	H3	H4	L1	L2
B5-20x16	113933	20	75	50	7	16	19	30	25	30	16
B5-30x20	113941	30	100	65	10	20	26	38	28	40	22
B5-40x25	113938	40	118	76	12.5	25	35	48	32.5	44	22
B5-50x32	113939	50	130	80	16	32	42	60	35	55	30
B5-60x32	113940	60	145	83	16	32	46	62.5	42.5	60	30

**B6**

外徑刀座加長型-刀片向上,左

Turning Tool DIN 69 880 Part3 Form B6 left hand, long

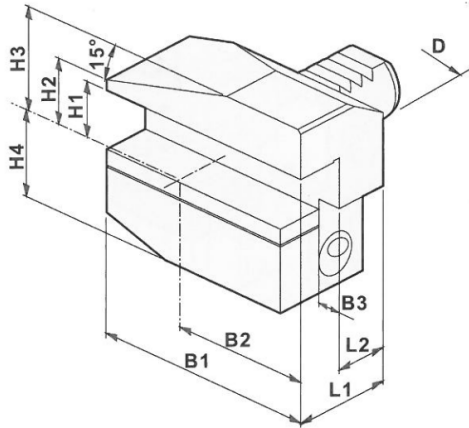


ORDER NO.	SIMILAR TO SAUTER ID. NO.	D	B1	B2	B3	H1	H2	H3	H4	L1	L2
B6-20x16	113944	20	75	50	7	16	19	30	25	30	16
B6-30x20	113948	30	100	65	10	20	26	38	28	40	22
B6-40x25	113950	40	118	76	12.5	25	35	48	32.5	44	22
B6-50x32	113951	50	130	80	16	32	42	60	35	55	30
B6-60x32	113952	60	145	83	16	32	46	62.5	42.5	60	30



**B7**

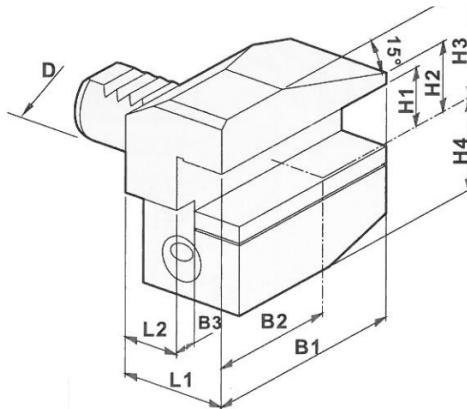
外徑刀座加長型-刀片向下,右  
Turning Tool Overhead DIN 69 880 Part3 Form B7 right hand, long



ORDER NO.	SIMILAR TO SAUTER ID. NO.	D	B1	B2	B3	H1	H2	H3	H4	L1	L2
B7-20x16	114064	20	75	50	7	16	19	30	25	30	16
B7-30x20	114060	30	100	65	10	20	22	38	35	40	22
B7-40x25	114058	40	118	75.5	12.5	25	30	48	42.5	44	22
B7-50x32	114057	50	130	80	16	32	35	60	50	55	30
B7-60x32	114056	60	145	82.5	16	32	42.5	62.5	42.5	60	30

**B8**

外徑刀座加長型-刀片向下,左  
Turning Tool Overhead DIN 69 880 Part3 Form B8 left hand, long

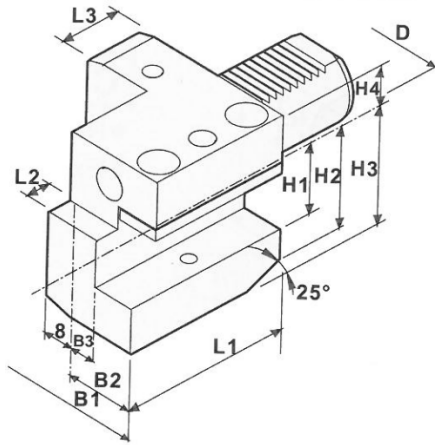


ORDER NO.	SIMILAR TO SAUTER ID. NO.	D	B1	B2	B3	H1	H2	H3	H4	L1	L2
B8-20x16	114053	20	75	50	7	16	19	30	25	30	16
B8-30x20	114049	30	100	65	10	20	22	38	35	40	22
B8-40x25	114047	40	118	75.5	12.5	25	30	48	42.5	44	22
B8-50x32	114046	50	130	80	16	32	35	60	50	55	30
B8-60x32	114045	60	145	82.5	16	32	42.5	62.5	42.5	60	30

**C1**

端面刀座-刀片向上,右

Turning Toolholder for Square Tool DIN 93 880 Part 4 Form C1 right hand

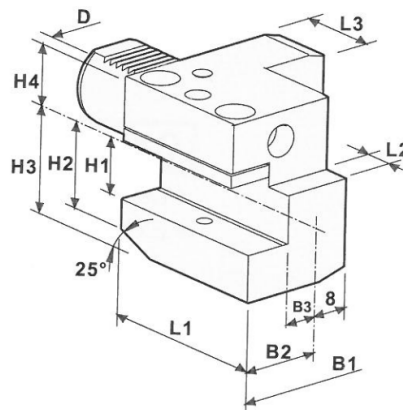


ORDER NO.	SIMILAR TO SAUTER ID. NO.	D	B1	B2	B3	H1	H2	H3	H4	L1	L2	L3
C1-20x16	114043	20	65	40	26	16	<b>23</b>	30	25	50	7	30
C1-30x20	114040	30	70	35	17	20	-	38	28	70	10	30
C1-40x25	114039	40	85	42.5	21	25	-	48	32.5	85	12.5	30
C1-50x32	114038	50	100	50	26	32	-	60	35	100	16	40
C1-60x32	114037	60	125	62.5	33	32	-	62.5	42.5	125	16	40

**C2**

端面刀座-刀片向上,左

Turning Toolholder for Square Tool DIN 93 880 Part 4 Form C2 left hand

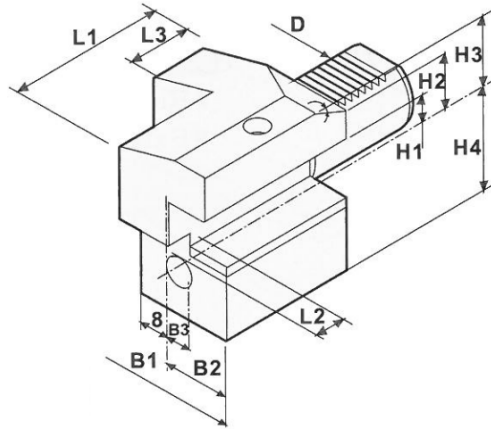


ORDER NO.	SIMILAR TO SAUTER ID. NO.	D	B1	B2	B3	H1	H2	H3	H4	L1	L2	L3
C2-20x16	114035	20	65	40	26	16	<b>23</b>	30	25	50	7	30
C2-30x20	114033	30	76	41	23	20	<b>28</b>	38	28	70	10	30
C2-40x25	114032	40	90	47.5	25.5	25	-	48	32.5	85	12.5	30
C2-50x32	114031	50	105	55	30.5	32	-	60	35	100	16	40
C2-60x32	114030	60	125	62.5	33	32	-	62.5	42.5	125	16	40

**C3**

端面刀座-刀片向下,右

Turning Toolholder for Square Tool, DIN 9880 Part 4 Form C3 right hand

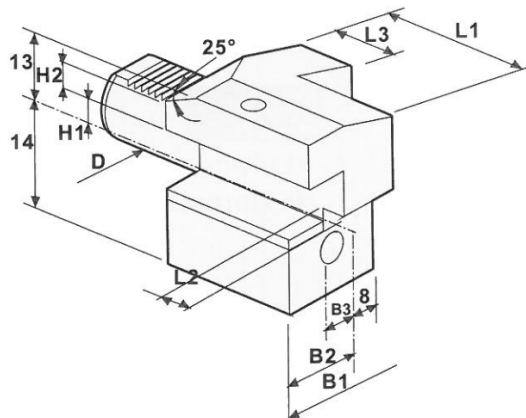


ORDER NO.	SIMILAR TO SAUTER ID. NO.	D	B1	B2	B3	H1	H2	H3	H4	L1	L2	L3
C3-20x16	114028	20	65	40	26	16	23	30	25	50	7	30
C3-25x16	114026	25	58	33	19	16		30	25	55	7	20
C3-30x20	114025	30	70	35	17	20	28	38	35	70	10	30
C3-40x25	114024	40	85	42.5	21	25	-	48	42.5	85	12.5	30
C3-50x32	114023	50	100	50	26	32	-	60	50	100	16	40
C3-60x32	114022	60	125	62.5	33	32	-	62.5	62.5	125	16	40

**C4**

端面刀座-刀片向下,左

Turning Toolholder for Square Tool DIN 9880 Part 4 Form C4 left hand

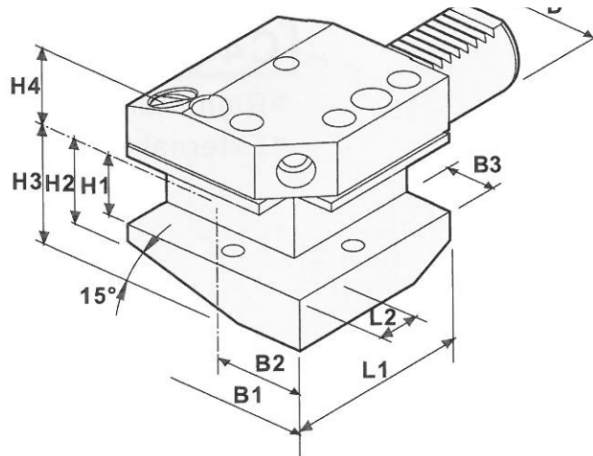


ORDER NO.	SIMILAR TO SAUTER ID. NO.	D	B1	B2	B3	H1	H2	H3	H4	L1	L2	L3
C4-20x16	114020	20	65	40	26	16	23	30	25	50	7	30
C4-30x20	114018	30	76	41	23	20	28	38	35	70	10	30
C4-40x25	114017	40	90	47.5	25.5	25	-	48	42.5	85	12.5	30
C4-50x32	114016	50	105	55	30.5	32	-	60	50	100	16	40
C4-60x32	114015	60	125	62.5	33	32	-	62.5	62.5	125	16	40

# CB1

雙向外徑刀座-刀片向上,右

Combined Static Toolholder DIN 99 880 Form CB1 right hand Form CB1, right hand

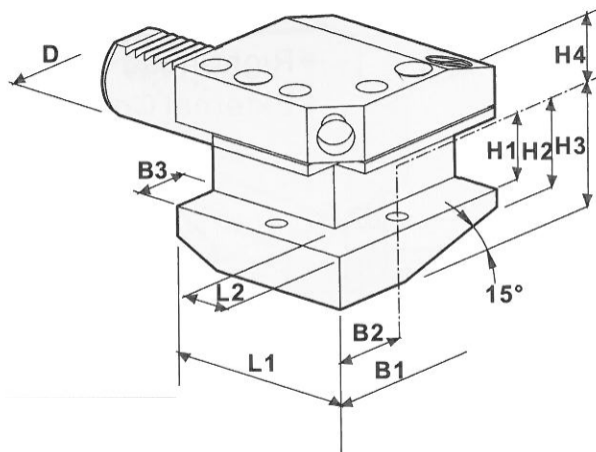


ORDER NO.	D1	B1	B2	B5	H1	H2	H3	H4	I1	I2
CB1- 20x16	20	65	40	14	16	19	30	25	50	14
CB1- 30x20	30	74	40	18	20	26	38	28	70	18
CB1- 40x25	40	85	45	22	25	35	48	32.5	100	20
CB1- 50x32	50	105	55	25	32	42	60	35	120	25
CB1- 60x32	60	125	62.5	30	32	46	62.5	42.5	135	30

# CB2

雙向外徑刀座-刀片向上,左

Combined Static Toolholder DIN 99 880 Form CB2 left hand Form CB1, right hand

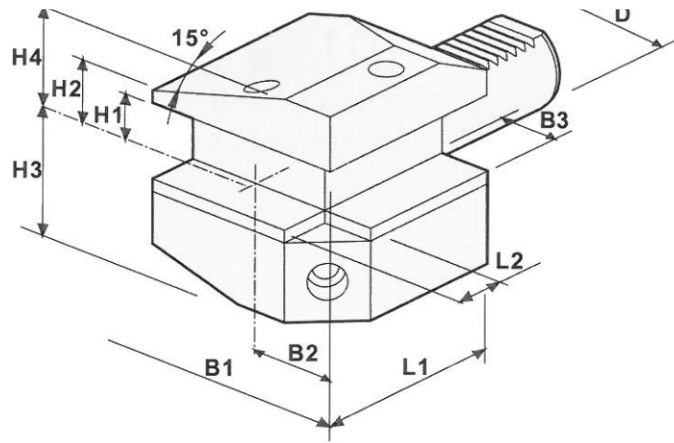


ORDER NO.	D1	B1	B2	B5	H1	H2	H3	H4	I1	I2
CB2- 20x16	20	65	40	14	16	19	30	25	50	14
CB2- 30x20	30	74	40	18	20	26	38	28	70	18
CB2- 40x25	40	85	47	22	25	35	48	32.5	100	20
CB2- 50x32	50	105	55	25	32	42	60	35	120	25
CB2- 60x32	60	125	62.5	30	32	46	62.5	42.5	135	30

# CB3

雙向外徑刀座-刀片向下,右

Combined Static Toolholder DIN 69 880 Form CB3 right hand Form CB1, right hand

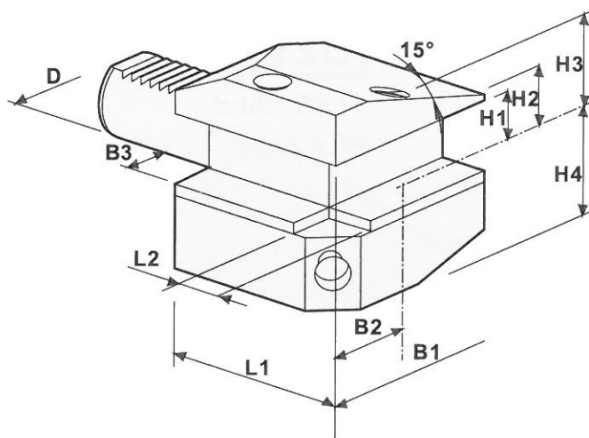


台製 ORDER NO.	D1	B1	B2	B5	H1	H2	H3	H4	I1	I2
CB3- 20x16	20	65	40	14	16	19	30	30	50	14
CB3- 30x20	30	74	40	18	20	22	38	28	70	18
CB3- 40x25	40	85	47	22	25	30	48	32.5	100	22
CB3- 50x32	50	105	55	25	32	35	50	60	120	25
CB3- 60x32	60	125	62.5	30	32	42.5	62.5	42.5	135	30

# CB4

雙向外徑刀座-刀片向下,左

Combined Static Toolholder DIN 69 880 Form CB4 left hand Form CB1, right hand

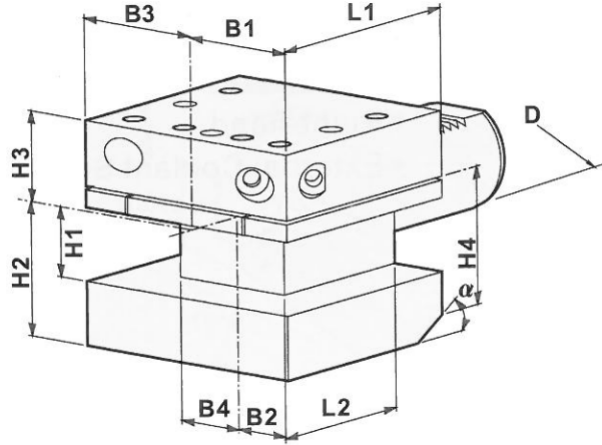


台製 ORDER NO.	D1	B1	B2	B5	H1	H2	H3	H4	I1	I2
CB4- 20x16	20	65	40	14	16	19	30	25	50	14
CB4- 30x20	30	74	40	18	20	22	28	38	70	18
CB4- 40x25	40	85	47	22	25	30	32.5	48	100	20
CB4- 50x32	50	105	55	25	32	35	60	50	120	25
CB4- 60x32	60	125	62.5	30	32	42.5	62.5	62.5	135	30

# D1

萬向外徑刀座-刀片向上

Multi Purpose Square Toolholder DIN 69 880 Part 5 Form D1

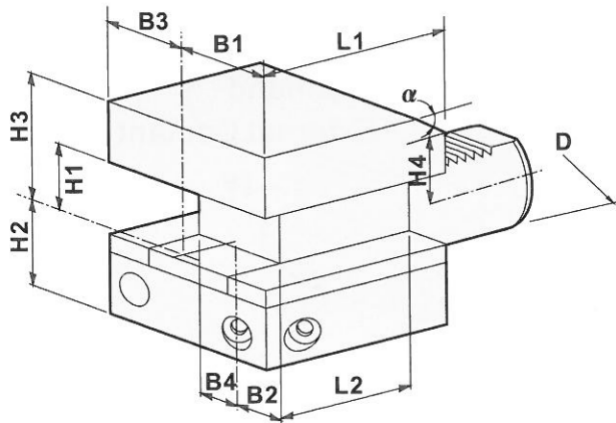


ORDER NO.	SIMILAR TO SAUTER ID. NO.	D	B1	B2	B3	B4	H1	H2	H3	H4	L1	L2	$\alpha$
D1-30x20	114013	30	35	17	41	23	20	38	35	30	60	42	25°
D1-40x25	114012	40	42.5	21	47.5	25.5	25	48	42.5	40	72	50	25°
D1-50x32	114011	50	50	26	55	30.5	32	60	50	-	85	60	-
D1-60x32	114010	60	57.5	33	57.5	33	32	62.5	62.5	-	110	85	-

# D2

萬向外徑刀座-刀片向下

Multi Purpose Square Toolholder Overhead DIN 69 880 Part 5 Form D2

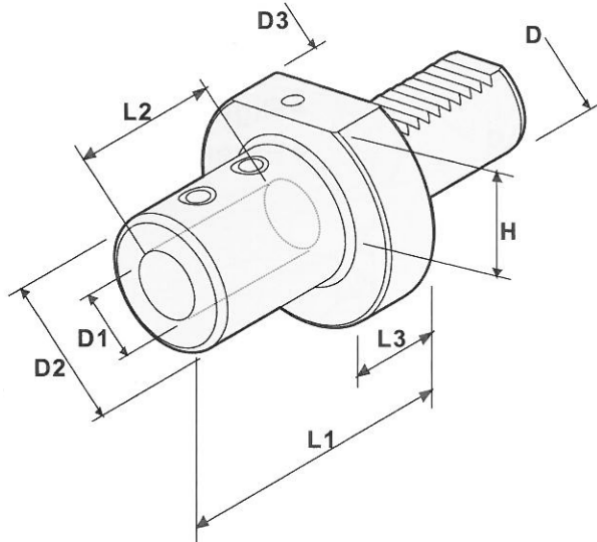


ORDER NO.	SIMILAR TO SAUTER ID. NO.	D	B1	B2	B3	B4	H1	H2	H3	H4	L1	L2	$\alpha$
D2-30x20	114008	30	35	17	41	23	20	38	35	30	60	42	25°
D2-50x32	114006	50	50	26	55	30.5	32	60	50	-	85	60	-
D2-60x32	114005	60	57.5	33	57.5	33	32	62.5	62.5	-	110	85	-

**E1**

内孔刀座-中心出水

Toolholder with cylindrical shaft DIN 69 880, Form E1 for tools with inner cooling systems

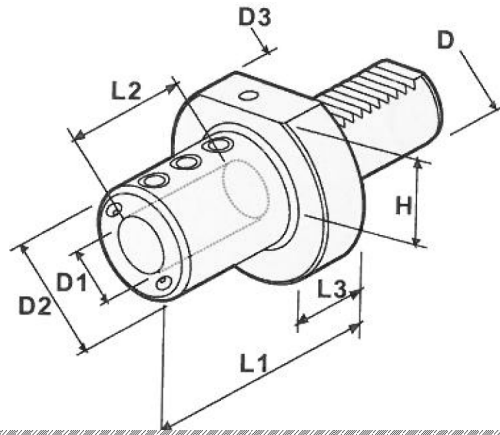


ORDER NO.	SIMILAR TO SAUTER ID. NO.	D	D1	D2	D3	H	L1	L2	L3
E1-20x20	114120	20	20	40	50	-	67	57	18
E1-20x25	114122	20	25	45	50	-	71	59	18
E1-30x20	114132	30	20	40	68	28	67	54	22
E1-30x25	114133	30	25	45	68	28	71	59	22
E1-30x32	114135	30	32	52	68	28	75	63	22
E1-40x16	114139	40	16	36	83	32.5	64	51	22
E1-40x20	114141	40	20	40	83	32.5	67	54	22
E1-40x25	114143	40	25	45	83	32.5	75	59	22
E1-40x32	114145	40	32	52	83	32.5	75	63	22
E1-40x40	114147	40	40	60	83	32.5	90	73	22
E1-50x20	114151	50	20	40	98	35	67	54	30
E1-50x25	114153	50	25	45	98	35	80	59	30
E1-50x32	114155	50	32	52	98	35	80	63	30
E1-50x40	114157	50	40	60	98	35	90	73	30
E1-50x50	114159	50	50	70	98	35	100	83	30

**E2**

內孔刀座-外出水

Side Lock Adaptor DIN 69 880, Form E2 for turning-tools with cylindrical shaft



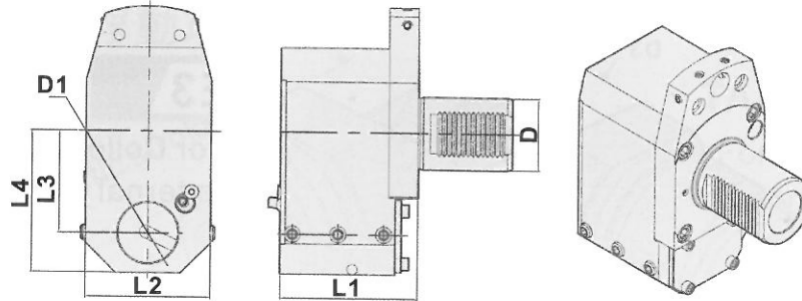
ORDER NO.	SIMILAR TO SAUTER ID. NO.	D	D1	D2	D3	H	L1	L2	L3
E2-20x8	114000	20	8	40	50	-	50	41	18
E2-20x10	113999	20	10	40	50	-	50	41	18
E2-20x12	113998	20	12	40	50	-	50	41	18
E2-20x16	113997	20	16	40	50	-	50	41	18
E2-20x20	113996	20	20	50	50	-	50	41	-
E2-20x25	113995	20	25	50	50	-	60	41	-
E2-25x25	113989	25	25	58	58	25	60	51	-
E2-30x8	113988	30	8	50	68	28	60	51	22
E2-30x10	113987	30	10	50	68	28	60	51	22
E2-30x12	113986	30	12	50	68	28	60	51	22
E2-30x16	113985	30	16	55	68	28	60	51	22
E2-30x20	113984	30	20	58	68	28	60	51	22
E2-30x25	113983	30	25	62	68	28	60	51	22
E2-30x32	113982	30	32	68	68	28	75	61	-
E2-40x10	113980	40	10	50	83	32.5	75	61	22
E2-40x12	113979	40	12	50	83	32.5	75	61	22
E2-40x16	113978	40	16	56	83	32.5	75	61	22
E2-40x20	113977	40	20	56	83	32.5	75	61	22
E2-40x25	113976	40	25	62	83	32.5	75	61	22
E2-40x32	113975	40	32	72	83	32.5	75	61	22
E2-40x40	113974	40	40	83	83	32.5	85	76	-
E2-50x10	-	50	10	50	98	35	90	76	30
E2-50x12	113973	50	12	56	98	35	90	76	30
E2-50x16	113972	50	16	56	98	35	90	76	30
E2-50x20	113971	50	20	62	98	35	90	76	30
E2-50x25	113970	50	25	72	98	35	90	76	30
E2-50x32	113969	50	32	72	98	35	90	76	30
E2-50x40	113968	50	40	80	98	35	90	76	30
E2-50x50	113967	50	50	-	98	35	95	76	-
E2-60x10	-	60	10	68	123	42.5	90	76	35
E2-60x12	-	60	12	68	123	42.5	90	76	35
E2-60x16	113966	60	16	68	123	42.5	90	76	35
E2-60x20	113965	60	20	68	123	42.5	90	76	35
E2-60x25	113964	60	25	68	123	42.5	90	76	35
E2-60x32	113963	60	32	68	123	42.5	90	76	35
E2-60x40	113962	60	40	98	123	42.5	90	76	35
E2-60x50	113961	60	50	98	123	42.5	90	76	35



## E2-OFF

內孔刀座, 偏心-外出水

Boring Bar Toolholder, offset, DIN 69 880, coolant supply external

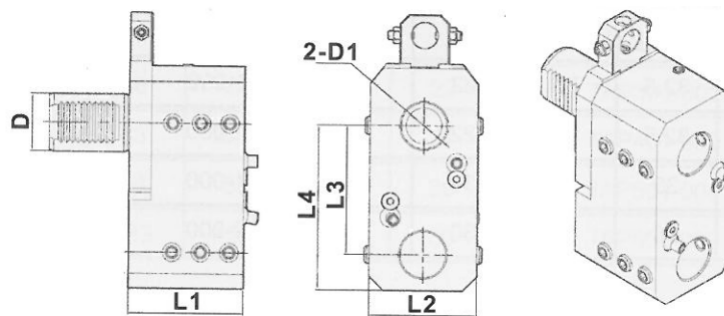


ORDER NO.	D	D1	L1	L2	L3	L4
E2-40xB50-35	40	50			32	
E2-50xB50-80	50	50	95	86	80	118
E2-60xB50-80	60	50	114	104	80	118
E2-60xB50-85	60	50	114	104	85	118

## E2-x2

雙孔內孔刀座-外出水

Boring Bar Toolholder with Double Holds, DIN 69 880, coolant supply external

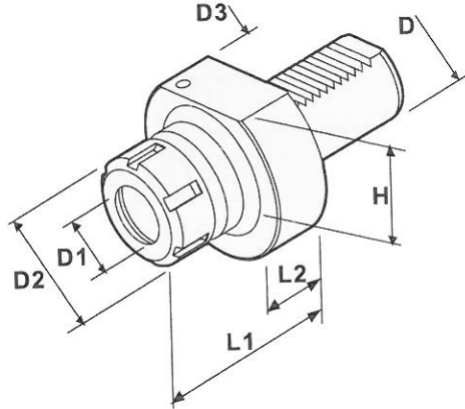


ORDER NO.	D	D1	L1	L2	L3	L4
E2-30-B25x2-35	30	25	65	60	35	56.4
E2-40-B32x2-90L	40	32	80.5	75	90	115
E2-40-B40x2-65	40	40	85	80	65	91.5
E2-50-B50x2-80	50	50	96	86	80	118
E2-60-B50x2-80	60	50	100	105	80	117

**E4**

套筒式內孔刀座-外出水

Collet Chuck DIN 69 880 Form E4 with cylindrical adaption by collet

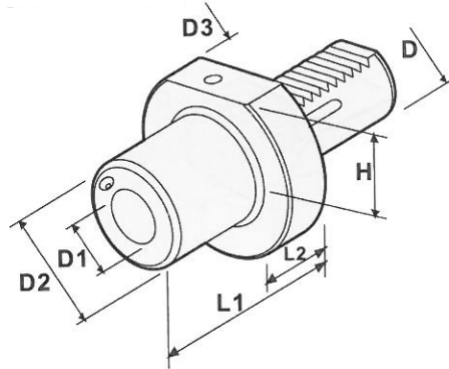


ORDER NO.	SIMILAR TO SAUTER ID. NO.	D	D1	D2	D3	H	L1	L2
E4-20-ER25	113875	20	1-16	42	50	-	50	18
E4-25-ER25	113878	25	1-16	42	68	25	57	22
E4-30-ER25	113880	30	1-16	42	68	28	53	22
E4-30-ER32	113881	30	2-20	50	68	28	57	22
E4-40-ER25	113883	40	1-16	42	83	32.5	62	22
E4-40-ER32	113884	40	2-20	50	83	32.5	62	22
E4-40-ER40	113885	40	3-26	63	83	32.5	75	22
E4-50-ER40	113886	50	3-26	63	98	35	75	30
E4-60-ER40	113887	60	3-26	63	123	42.5	75	30
E4-60-ER50	-	60	10-34	78	123	42.5	75	30

**F**

莫式錐度內孔刀座

Toolholders with Morse Taper according DIN69 880, Part 7 form F for shanks with Tang, External coolant supply

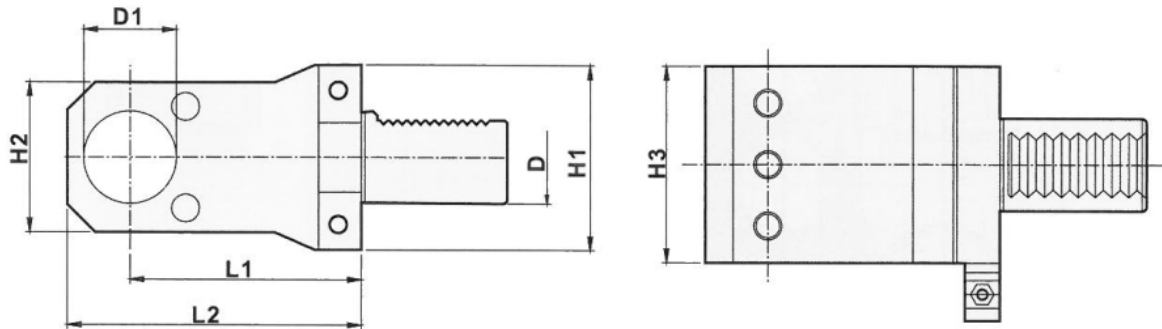


ORDER NO.	SIMILAR TO SAUTER ID. NO.	D	D1	D2	D3	H	L1	L2
F20-MT1	114601	20	MT1	-	50	-	23	-
F30-MT1	114605	30	MT1	52	68	28	27	22
F30-MT2	114606	30	MT2	58	68	28	43	22
F30-MT3	114607	30	MT3	64	68	28	66	22
F40-MT1	114608	40	MT1	55	83	32.5	36	22
F40-MT2	114609	40	MT2	66	83	32.5	43	22
F40-MT3	114610	40	MT3	72	83	32.5	58	22
F40-MT4	114611	40	MT4	72	83	32.5	78	22
F50-MT1	-	50	MT1	55	98	35	36	30
F50-MT2	114612	50	MT2	55	98	35	36	30
F50-MT3	114613	50	MT3	60	98	35	44	30
F50-MT4	114614	50	MT4	70	98	35	71	30
F60-MT3	114616	60	MT3	58	123	42.5	36	30
F60-MT4	114617	60	MT4	68	123	42.5	50	30

**T1**

徑向內孔刀座, 外出水, 中心出水

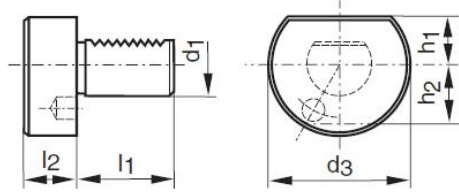
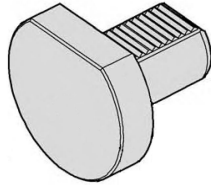
Axial Static Toolholder DIN 69 880 Form T1, External, internal coolant supply



ORDER NO.	D	D1	H1	H2	H3	L1	L2
T1-30-32-65	30	32	65	52	62	65	90
T1-30-32-85	30	32	65	52	62	85	108
T1-30-32-100	30	32	65	52062	100	123	52
T1-30-32-120	30	32	65	52	62	100	123
T1-40-32-85	40	32	80	65	85	85	112
T1-40-40-85	40	40	80	65	85	85	112
T1-40-40-100	40	40	80	65	85	100	127
T1-50-40-100	50	40	90	80	96	100	137
T1-50-50-100	50	50	90	80	96	100	137

**Z2**

保護栓塞 Plug, made either steal or plastic DIN 69 880 Form Z2



Version Plastic

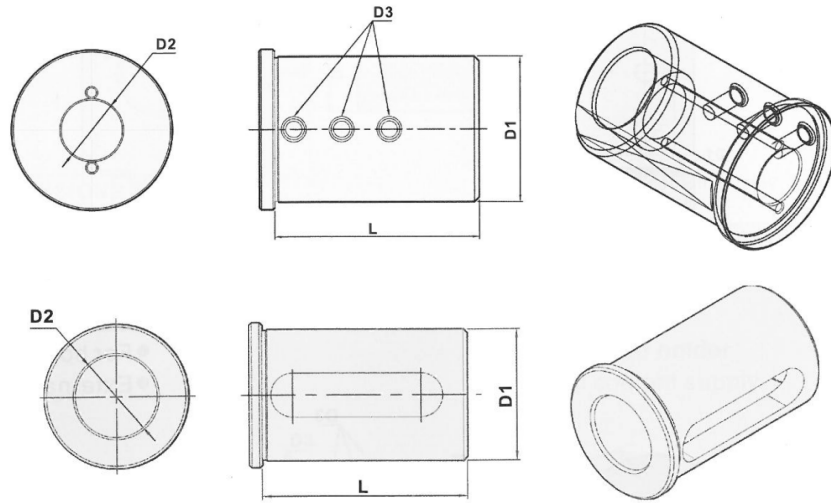
ORDER NO.	SIMILAR TO SAUTER ID. NO.	d1	d3	h1	h2	l1max	l2max
30K/V	086191	30	68	28	30	55	16
40K/V	086192	40	83	32.5	-	63	20

Version Steel with O-ring

ORDER NO.	SIMILAR TO SAUTER ID. NO.	d1	d3	h1	h2	l1max	l2max
50 S m. O-Ring	114573	50	98	35	-	78	20
60 S m. O-Ring	114571	60	123	42.5	-	94	20

**R1**

**變徑套(套筒) Reducing Sleeve, for tools with cylindrical shaft**



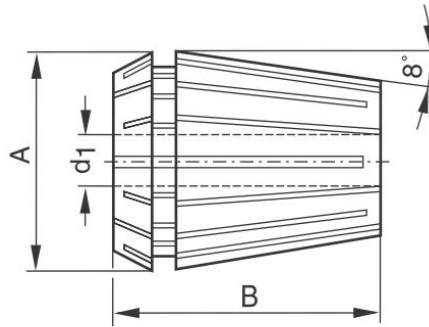
ORDER NO.	SAUTER ASIA ID. NO.	D1	D2	D3	L
E25-6	7061006	25	6	Thread	55
E25-8	7061007		8		
E25-10	7061008		10		
E25-12	7061009		12	-	
E25-16	7061010		16	-	
E25-20	7061011		20	-	
E32-6	7061012	32	6	Thread	60
E32-8	7061013		8		
E32-10	7061014		10		
E32-12	7061015		12	-	
E32-16	7061016		16	-	
E32-20	7061017		20	-	
E32-25	7061018		25	-	
E40-6	7061019	40	6	Thread	70
E40-8	7061020		8		
E40-10	7061021		10		
E40-12	7061022		12	-	
E40-16	7061023		16	-	
E40-20	7061024		20	-	
E40-25	7061025		25	-	
E40-32	7061026		32	-	

ORDER NO.	SIMILAR TO SAUTER ID. NO.	D1	D2	D3	L	
E50-8	7061027	50	8	Thread	85	
E50-10	7061028		10			
E50-12	7061029		12			
E50-16	7061030		16			
E50-20	7061031		20			
E50-25	7061032		25			
E50-32	7061062		32			-
E50-40	7061061		40			-
E60-12	7061035	60	12	Thread	107	
E60-16	7061036		16			
E60-20	7061037		20			
E60-25	7061038		25			
E60-32	7061039		32			
E60-40	7061040		40			-
E60-50	7061041		50			-

公製/英製	6(1/4")	8(5/16")	10(3/8")	12(1/2")	16(5/8")	20(3/4")
規格比較	25(1")	32(1-1/4)	40(1-1/2")	50(2")	60(2-1/2")	--

**R2**

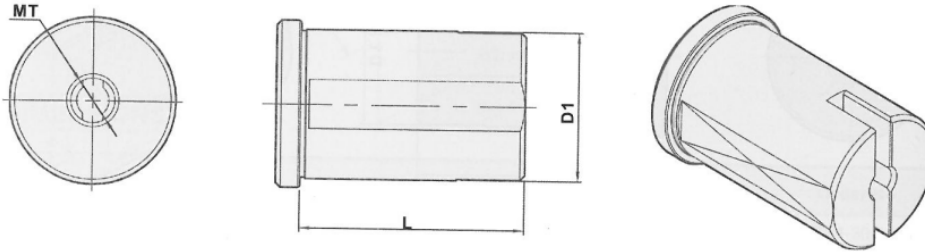
筒夾 Collets, acc. To DIN 6499 Form B



Größe/Size	4008E Form B 11	424E Form B 12	426E Form B 16	428E Form B 20	430E Form B 25	470E Form B 32	472E Form B 40	477E Form B 50
	A=11,5, B=18	A=11,8, B=19,5	A=17, B=27	A=21, B=31	A=26, B=35	A=33, B=40	A=41, B=46	A=52, B=60
Satz-Ident-Nr.	118254	118255	118256	118257	118244	118258	118259	118260
Durchmesser/ diameter d <sub>1</sub>	Ident-Nr.	Ident-Nr.	Ident-Nr.	Ident-Nr.	Ident-Nr.	Ident-Nr.	Ident-Nr.	Ident-Nr.
1,0	115019	114177	115033					
1,5	115020	114178						
2,0	115021	114179	115034	115043	115055			
2,5	115022	114180						
3,0	115023	114181	115035	115044	115056	115070		
3,5	115024							
4,0	115025	114182	115036	115045	115057	115071	115088	
4,5	115026							
5,0	115027	114186	115037	115046	115058	115072	115089	
5,5	115028							
6,0	115029	114187	115038	115047	115059	115073	115090	
6,5	115030							
7,0	115031	114188	115039	115048	115060	115074	115091	
7,5								
8,0			115040	115049	115061	115075	115092	
8,5								
9,0			115041	115050	115062	115076	115093	
9,5								
10,0			115042	115051	115063	115077	115094	
10,5								
11,0				115052	115064	115078	115095	
11,5								
12,0				115053	115065	115079	115096	115111
12,5								
13,0				115054	115066	115080	115097	
13,5								
14,0					115067	115081	115098	115112
14,5								



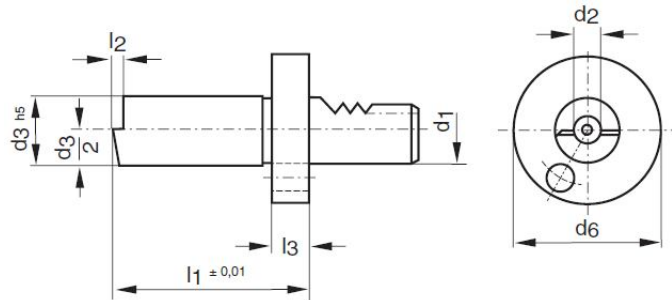
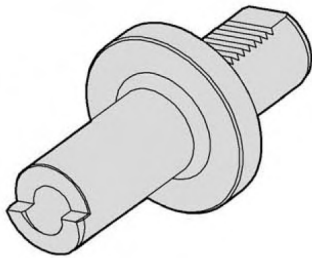
Größe/Size	4008E Form B 11	424E Form B 12	426E Form B 16	428E Form B 20	430E Form B 25	470E Form B 32	472E Form B 40	477E Form B 50
	A=11,5, B=18	A=11,8, B=19,5	A=17, B=27	A=21, B=31	A=26, B=35	A=33, B=40	A=41, B=46	A=52, B=60
Satz- Ident-Nr.	118254	118255	118256	118257	118244	118258	118259	118260
Durchmesser/ diameter d <sub>1</sub>	Ident-Nr.	Ident-Nr.	Ident-Nr.	Ident-Nr.	Ident-Nr.	Ident-Nr.	Ident-Nr.	Ident-Nr.
15,0					115068	115082	115099	
15,5								
16,0					115069	115083	115100	115113
16,5								
17,0						115084	115101	
17,5								
18,0						115085	115102	115114
18,5								
19,0						115086	115103	
19,5								
20,0						115087	115104	115115
20,5								
21,0							115105	
21,5								
22,0							115106	115116
22,5								
23,0							115107	
23,5								
24,0							115108	115117
24,5								
25,0							115109	
25,5								
26,0							115110	115118
26,5								
27,0								
27,5								
28,0								115119
28,5								
29,0								
29,5								
30,0								115120
30,5								
31,0								
31,5								
32,0								115121
32,5								
33,0								
34,0								115122

**R3**
**MT 變徑套 Reducing Sleeve for Morse Taper**


ORDER NO.	D1	L	MT
E25-MT1	25	50	MT1
E25-MT2		50	MT2
E32-MT1	32	60	MT1
E32-MT2		60	MT2
E32-MT3		60	MT3
E40-MT1	40	70	MT1
E40-MT2		70	MT2
E40-MT3		70	MT3
E40-MT4		70	MT4
E50-MT2	50	76	MT2
E50-MT3		97	MT3
E50-MT4		107	MT4
E50-MT5		125	MT5
E60-MT2	60	76	MT2
E60-MT3		97	MT3
E60-MT4		107	MT4
E60-MT5		125	MT5

**SH**

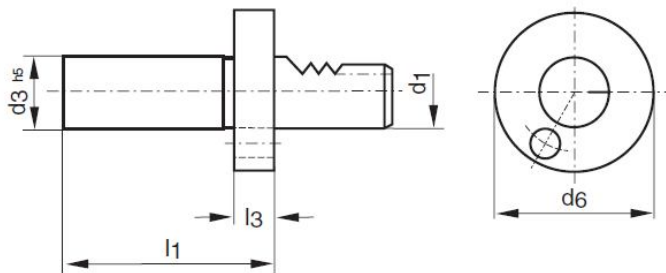
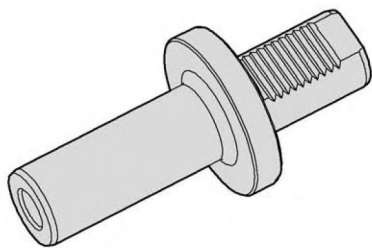
校正棒 Setting Holder with shaft acc. to DIN69 880



德製Order No.	d <sub>1</sub>	d <sub>2</sub>	d <sub>3</sub>	d <sub>6</sub>	l <sub>1</sub>	l <sub>2</sub>	l <sub>3</sub>
114475	16	20	30	40	100	8	15
114476	20	20	40	50	100	8	15
114477	25	20	40	58	100	8	15
114478	30	20	40	68	100	8	15
114479	40	20	40	83	100	8	15
114480	50	20	40	98	100	8	15
114481	60	20	40	123	100	8	15

**ST**

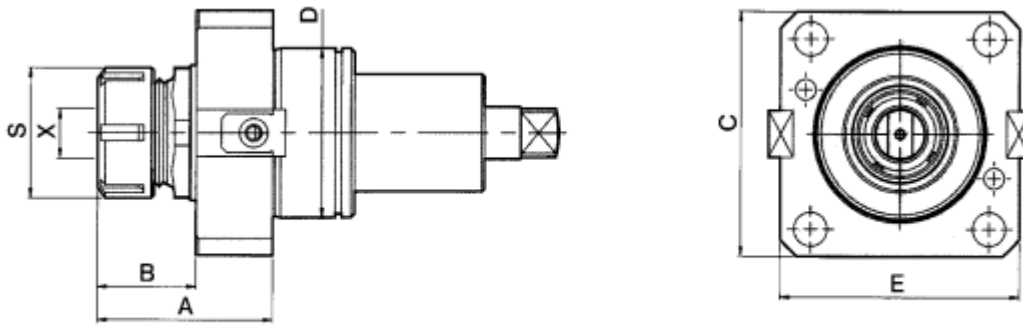
測試棒 Test mandrel with shaft acc. to DIN69 880



德製Order No.	d <sub>1</sub>	d <sub>3</sub>	d <sub>6</sub>	l <sub>1</sub>	l <sub>3</sub>
114482	16	30	40	120	15
114483	20	40	50	150	15
114484	25	40	58	150	15
114485	30	40	68	200	15
114486	40	40	83	200	15
114487	50	40	98	200	15
114488	60	40	123	200	15

**BMT- 0 度動力刀座, 外出水**

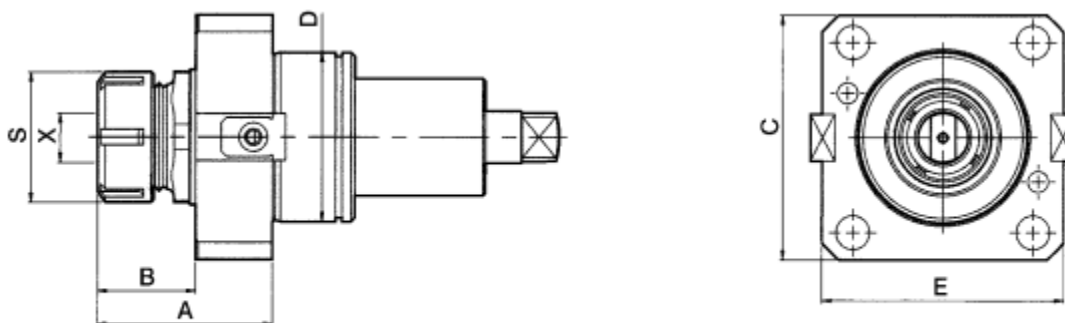
**BMT Driven tool 0°, collet chuck, coolant supply external (DAEWOO)**



台製 ORDER NO.	D DIN 69880	X CAPACITY	S	MAX. R.P.M.	A	B	C	E
<b>BMT45-DA45-25</b>	45	DIN 6499-25 1-16	35	6000	60	32.5	75	75
<b>BMT55-DA55-25</b>	55	DIN 6499-25 1-16	42	6000	62	33	85	85
<b>BMT65-DA65-32</b>	65	DIN 6499-32 2-20	50	6000	68.5	38.5	94	94
<b>BMT65-DA65-32S</b>	65	DIN 6499-32 2-20	50	6000	58	36	94	94
<b>BMT75-DA75-40</b>	75	DIN 6499-40 3-26	63	6000	78	43	115	115

**BMT- 0 度動力刀座, 中心出水**

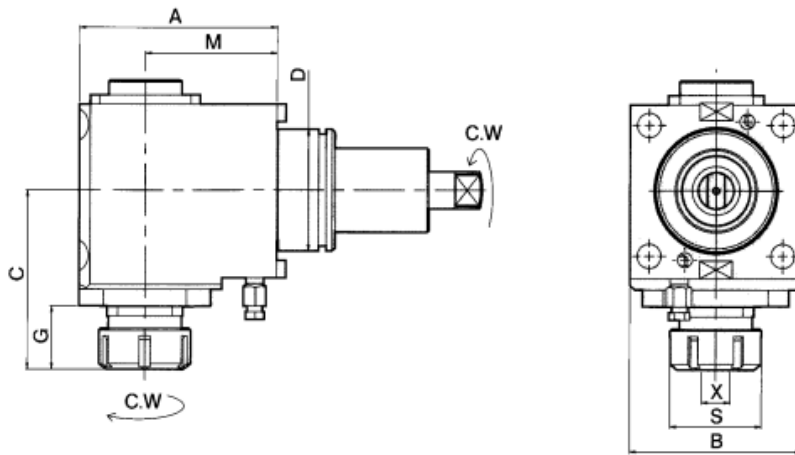
**BMT Driven tool 0°, collet chuck, coolant supply internal and external (DAEWOO)**



ORDER NO.	D DIN 69880	X CAPACITY	S	MAX. R.P.M.	A	B	C	E
<b>CW-BMT55-DA55-25</b>	55	DIN 6499-25 1-16	42	6000	76.9	31.1	85	85
<b>CW-BMT65-DA65-32</b>	65	DIN 6499-32 2-20	50	6000	58	36	94	94
<b>CW-BMT75-DA75-40</b>	75	DIN 6499-40 3-26	63	6000	83	43	112	115

**BMT- 90 度動力刀座, 外出水**

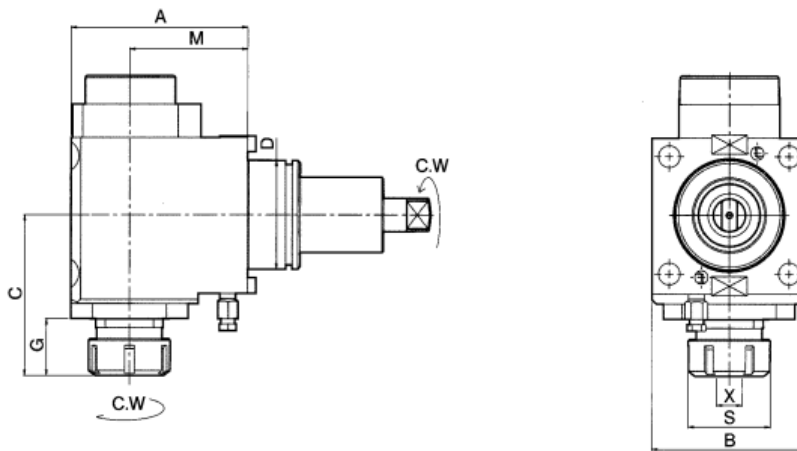
**BMT Driven tool 90°, collet chuck, coolant supply external (DAEWOO)**



ORDER NO.	D DIN 69880	X CAPACITY	S	MAX. R.P.M.	A	B	C	G	M
<b>BMT45-DF45-25-65</b>	45	DIN 6499-25 1-16	35	5000	95	75	77.5	30	65
<b><u>BMT55-DF55-25-60</u></b>	55	DIN 6499-25 1-16	42	5000	86	85	81	31	60
<b>BMT65-DF65-32-72</b>	65	DIN 6499-32 2-20	50	5000	108	94	96	34	72
<b><u>BMT65-DF65-32-85</u></b>	65	DIN 6499-32 2-20	50	5000	121	94	96.5	34.5	85
<b>BMT65-DF65-32-100</b>	65	DIN 6499-32 2-20	50	5000	137	94	96.5	34.5	100
<b>BMT75-DF75-40-60</b>	75	DIN 6499-40 3-26	63	5000	105	112	100.5	44	60
<b>BMT75-DF75-40-70</b>	75	DIN 6499-40 3-26	63	5000	115	112	106.5	39	70
<b>BMT75-DF75-40-90</b>	75	DIN 6499-40 3-26	63	5000	135	112	106.5	39	90
<b>BMT75-DF75-40-125</b>	75	DIN 6499-40 3-26	63	5000	170	112	110.5	44	125

BMT- 90 度動力刀座, 中心出水

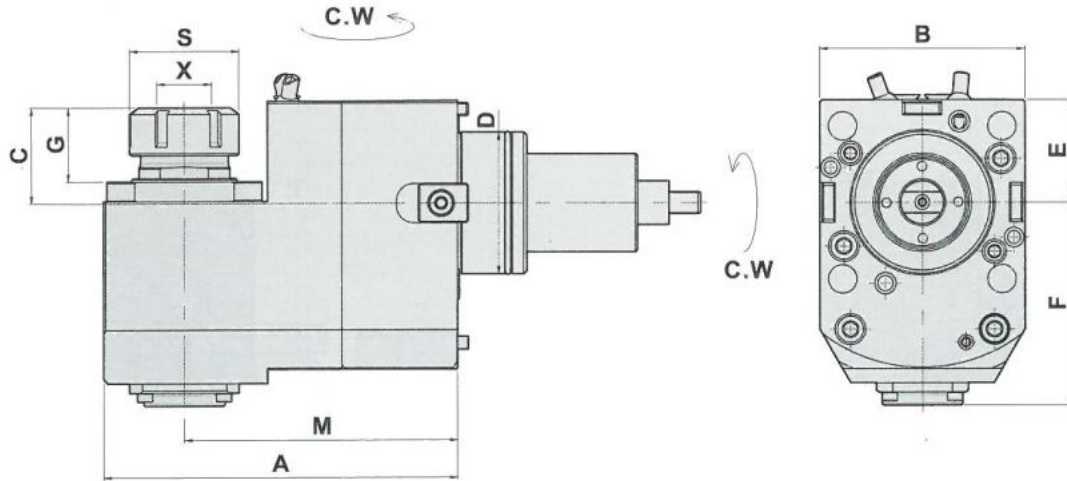
BMT Driven tool 90°, collet chuck, coolant supply internal and external (DAEWOO)



ORDER NO.	D DIN 69880	X CAPACITY	S	MAX. R.P.M.	A	B	C	G	M
CW-BMT55-DF55-25-60	55	DIN 6499-25 1-16	42	5000	92	85	81	31	60
CW-BMT65-DF65-32-72	65	DIN 6499-32 2-20	50	5000	108	94	96	34	72
CW-BMT75-DF75-40-70	75	DIN 6499-40 3-26	63	5000	115	112	106.5	39	70
CW-BMT75-DF75-40-90	75	DIN 6499-40 3-26	63	5000	135	112	106.5	39	90
CW-BMT75-DF75-40-125	75	DIN 6499-40 3-26	63	5000	170	112	111	44	125

BMT- 90 度動力刀座, 後縮, 外出水

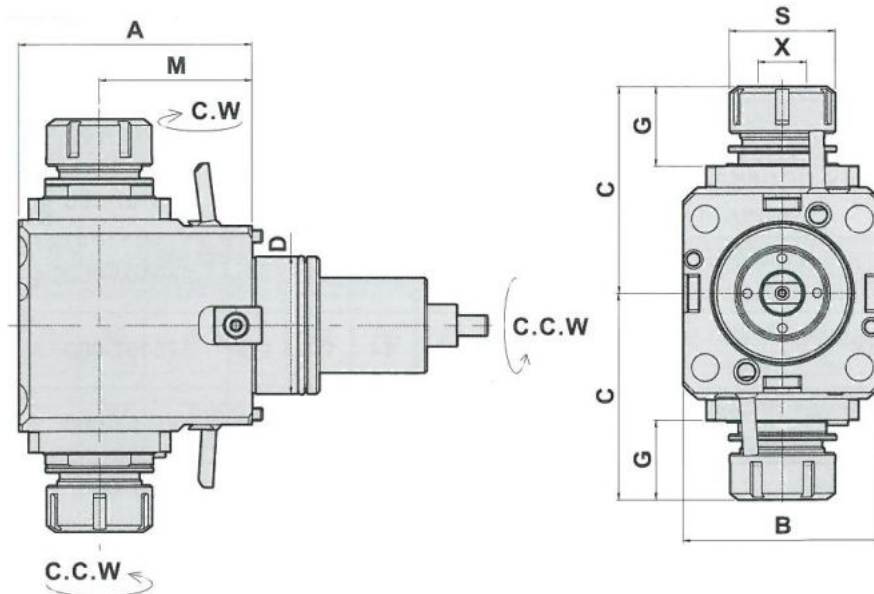
BMT Driven tool 90°, rear offset, collet chuck, coolant supply external (DAEWOO)



ORDER NO.	D DIN 69880	X CAPACITY	S	MAX. R.P.M.	A	B	C	E	F	G	M
BMT65-DB65-32-125	65	DIN 6499-32 2-20	50	5000	162	94	44	47	93	34	125

BMT- 90 度動力刀座, 雙頭, 外出水

BMT Driven tool 90°, 2 collet chucks, coolant supply external (DAEWOO)

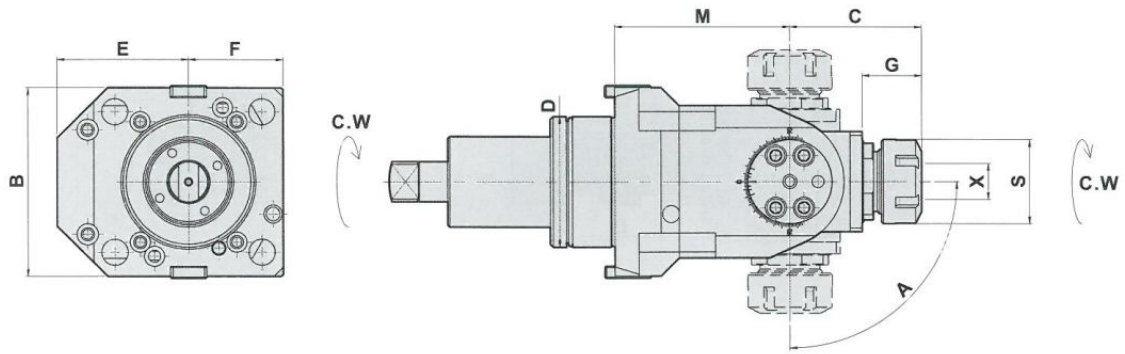


ORDER NO.	D DIN 69880	X CAPACITY	S	MAX. R.P.M.	A	B	C	G	M
BMT45-DF45-20-65D	45	DIN 6499-20 1-13	35	4000	100	75	83.5	29.5	65
BMT55-DF55-25-70D	55	DIN 6499-25 1-16	42	4000	105	85	93	33	70
BMT65-DF65-32-72D	65	DIN 6499-32 2-20	50	4000	110	94	97.5	37.5	72



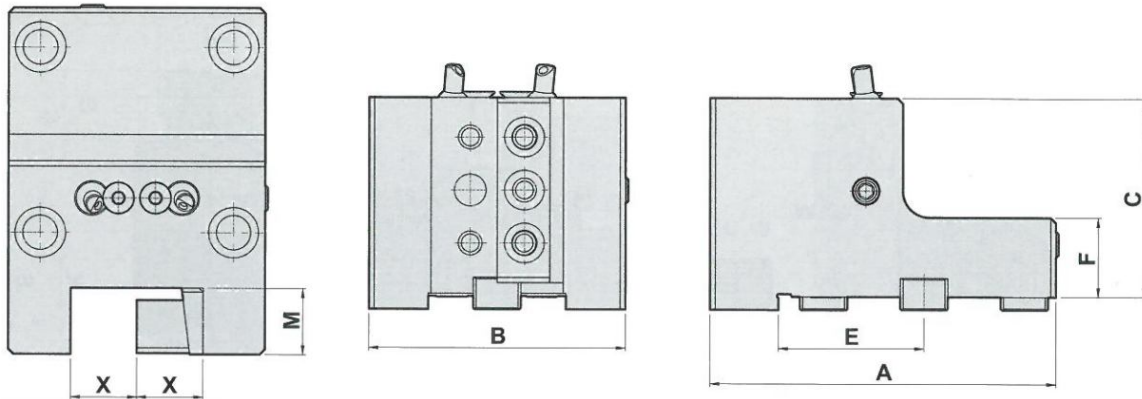
BMT- 萬向動力刀座, 外出水

BMT Driven tool  $\pm 90^\circ$  ,angle adjustable, coolant supply external (DAEWOO)

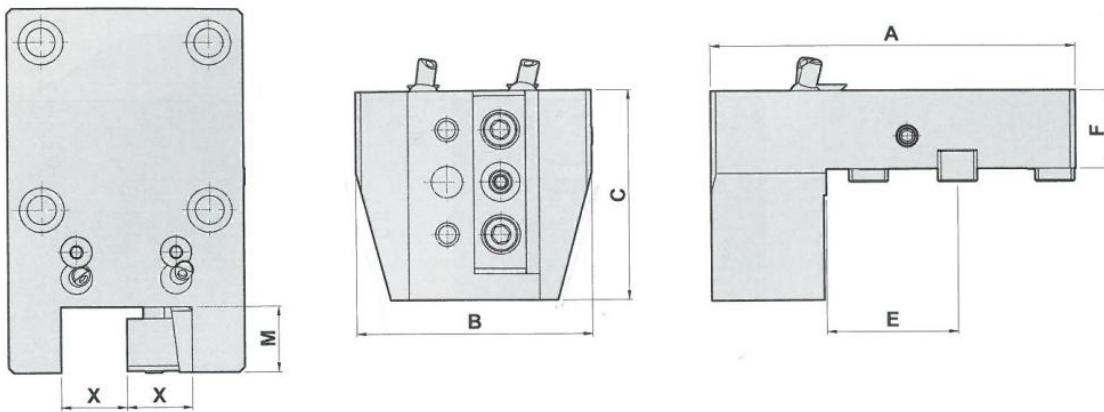


ORDER NO.	D DIN 69880	X CAPACITY	S	MAX. R.P.M.	A	B	C	E	F	G	M
BMT65-DA65-25B	65	DIN 6499-25 1-16	50	4000	$\pm 90^\circ$	94	65.5	65	47	29	87

**BMT 外徑刀座, 外出水**  
**BMT Turning Tool Holder, coolant supply external**



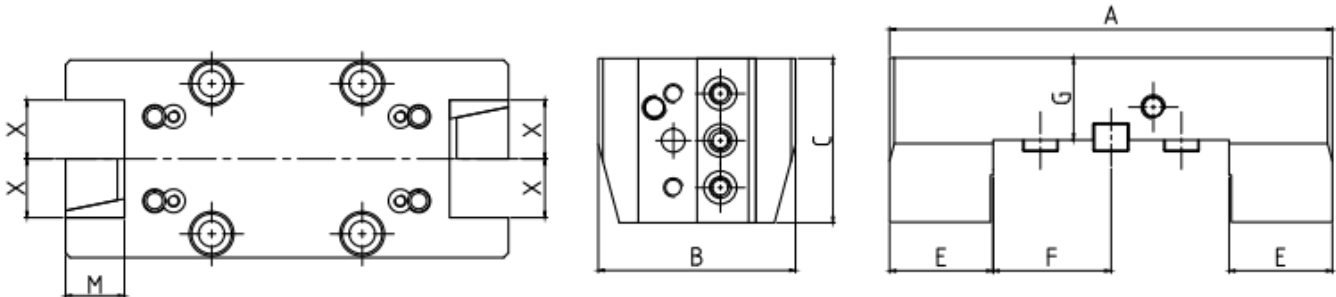
ORDER NO.	X	A	B	C	E	F	M	SAUTER ASIA ID. NO.
BMT45-C20-60	20	105.2	75	60	--	30	20	508303001
BMT55-C25-80	25	14	85	80		30	20	508303008
BMT65-C25-75	25	161	97	75	25.4	30	25	508303004
BMT75-C25-100	25	137.5	112	100	-	35	25	508303005
BMT75-C32-100	32	154.5	120	100	-	35	32	508303006



ORDER NO.	X	A	B	C	E	F	M	SAUTER ASIA ID. NO.
BMT55-C25-30	25	139	90	80	50.1	30	25	508303009

**BMT 雙頭外徑刀座, 外出水**

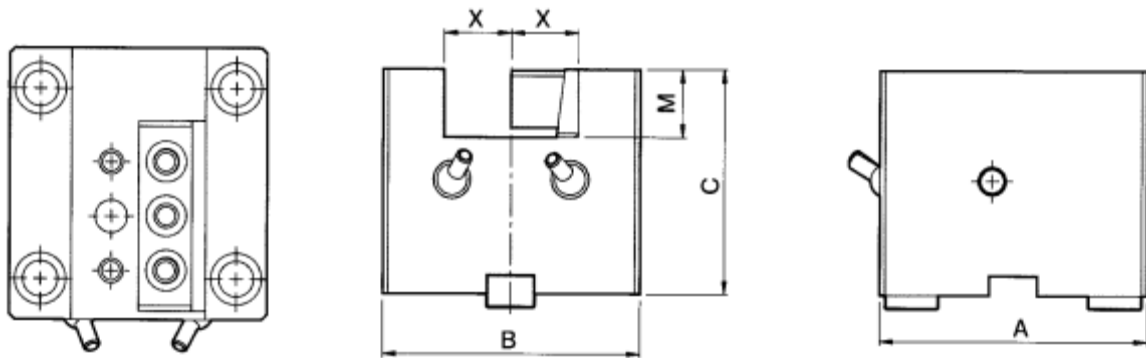
**BMT Double Turning Tool Holder, coolant supply external**



ORDER NO.	X	A	B	C	E	F	M	G	SAUTER ASIA ID. NO.
<b>BMT55-C25*2-35</b>	25	188.4	84	70	44	50.2	25	35	<b>508303002</b>

**BMT 端面刀座, 外出水**

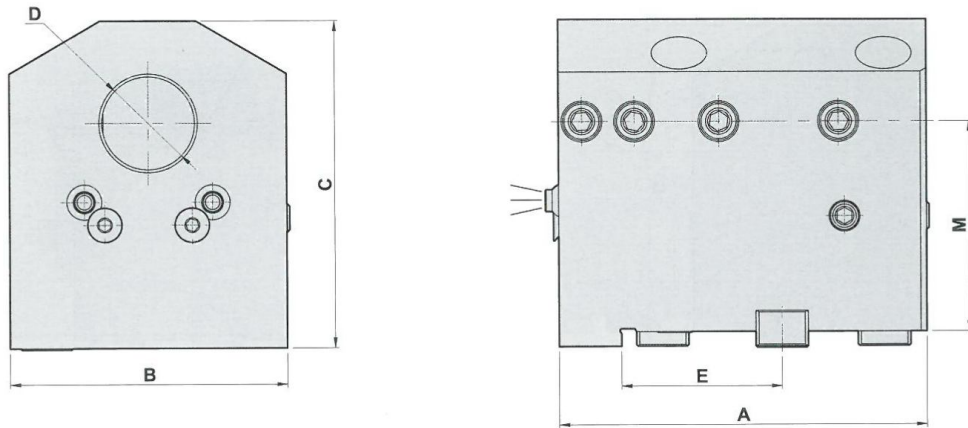
**BMT Facing Tool Holder, coolant supply external**



ORDER NO.	X	A	B	C	M	SAUTER ASIA ID. NO.
<b>BMT45-F20-80</b>	20	86	75	80	20	508301001
<b>BMT55-F20-70</b>	20	95	86	70	25	
<b>BMT55-F25-60</b>	25	95	84	60	25	508301002
<b>BMT65-F25-82</b>	25	100	96	82.5	25	508301003
<b>BMT65-F25-120</b>	25	100	94	120	25	
<b>BMT75-F25-122</b>	25	112	112	122	25	508303005
<b>BMT75-F32-122</b>	32	120	120	122	32	508303006

BMT 内孔刀座, 外出水

BMT Boring Bar Tool Holder, coolant supply external



ORDER NO.	D	A	B	C	E	M	SAUTER ASIA ID. NO.
BMT45-B25-65	25	95	75	88	-	65	508302001
BMT55-B32-60	32	105	84	90	-	60	508302002
BMT55-B40-60	40	105	91	90	-	60	
BMT65-B40-72	40	126	95	112	55	72	508302003
BMT65-B40-100	40	126	95	140	55	100	508302004
BMT65-B50-100	50	126	95	144	55	100	
BMT75-B50-90	50	120	112	130	-	90	508302005
BMT75-B50-100	50	120	112	140	-	100	508302006
BMT75-B60-90	60	120	112	137	-	90	
BMT75-B63.5-110	63.5	120	112	160	-	110	508302008
BMT75-B80-120	80	120	124	176	-	120	508302007

307001-000  
DW230-832-60  
-外置力源

406001-000  
DW230-C25-30  
-外置力源

155101-000  
DW230-DA55-ER25  
-0.71MPa

406001-000  
DW230-C25-30  
-外置力源

155101-000  
DW230-DA55-ER25  
-0.71MPa

406001-000  
DW230-C25-30  
-外置力源

255101-000  
DW230-DF55-25-60  
-90 卸油力源

307001-000  
DW230-B32-60  
-外置力源

506001-000  
DW230-F25-60  
-插板式力源

307001-000  
DW230-B32-60  
-外置力源

406001-000  
DW230-V100-外置力源  
C25-30-V100-外置力源

406002-000  
C25-30-V90-外置力源

307001-000  
DW230-B32-60-外置力源

406001-000  
DW230-C25-30-外置力源

406008-000  
C25x2-30-V100-外置力源

406010-000  
C25x2-30-V90-外置力源

155101-000  
DW230-DA55-ER25

255101-000  
DW230-DF55-25-60

155107-000  
CW-DW230-DA55-ER25  
Model

255101-000  
DW230-DA55-ER25

255101-000  
DW230-DF55-25-60

255101-000  
CW-DW230-DF55-25-60  
Model

506001-000  
F25-60-插板式力源

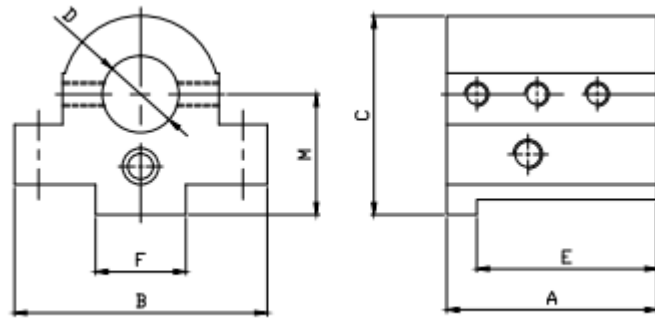
一般公差		公差		日期		加工		规格	
尺寸范围	公差	比例	单位	日期	日期	材料尺寸	材料	零件	零件
1-4	±0.025	1:3	mm	2012/3/19					0.5.434.016
4-16	±0.035								BM155
16-63	±0.05								
63-250	±0.10								



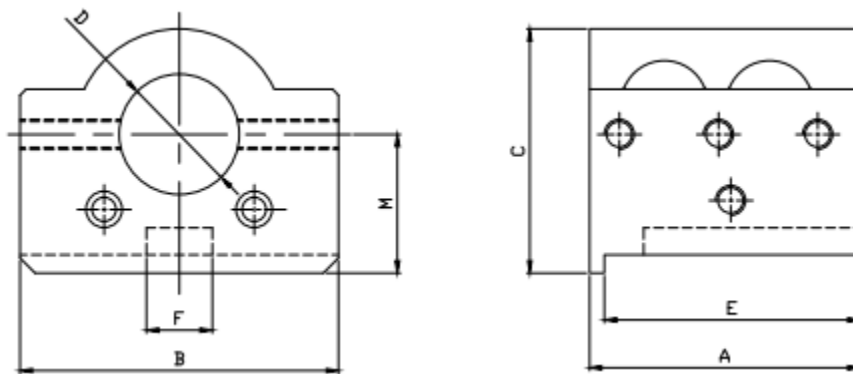


溝槽式-內孔刀座, 外出水

Slot Type Turning Tool Holder, coolant supply external



ORDER NO.	D	A	B	C	E	F	M	
H20.065.089	∅20	65	89	61	45	32	40	508102005
H25.080.084	∅25	80	84	66	60	30	40	508102014
H32.080.084	∅32	80	84	66	60	30	40	508102030

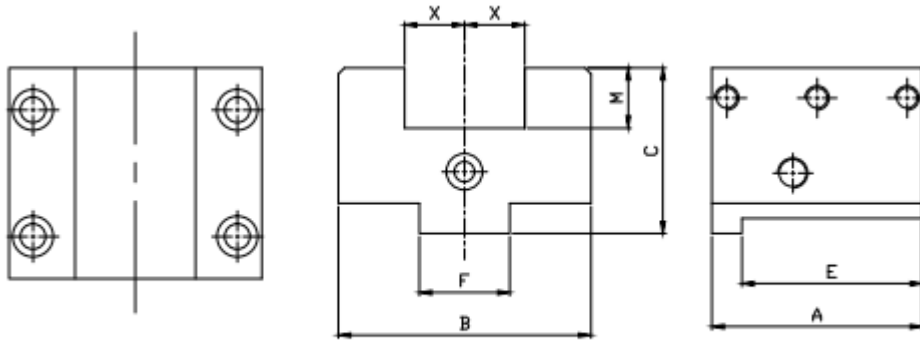


ORDER NO.	D	A	B	C	E	F	M	
H40.085.100	∅40	85	100	81	85	21.9	46	508102026
H40.090.106	∅40	90	106	81	85	21.9	46	508102002
H50.118.118	∅50	118	118	90	108	21.9	46	508102029

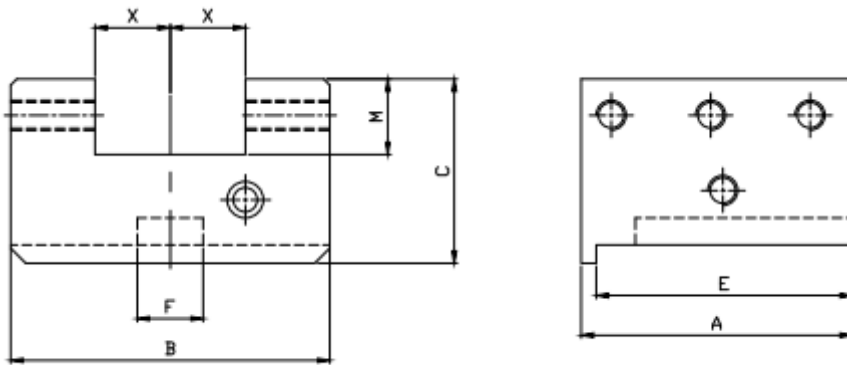


溝槽式-端面刀座, 外出水

Slot Type Facing Tool Holder, coolant supply external

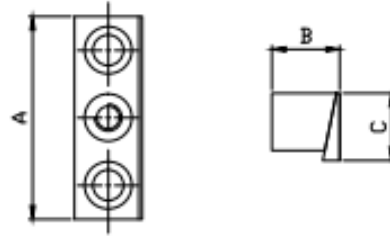


ORDER NO.	KNIFE HANDLE	A	B	C	E	F	M	X	
F20.065.089	20 SHANK	65	89	50	45	32	20	20	508101017
F20.070.084	20 SHANK	70	84	55	60	30	20	20	508101001



ORDER NO.	KNIFE HANDLE	A	B	C	E	F	M	X	
F25.085.100	25 SHANK	85	100	61	85	21.9	25	25	508101018
F25.090.106	25 SHANK	90	106	61	85	21.9	25	25	508101004
F32.113.118	32 SHANK	113	118	66	108	21.9	32	32	508101015

溝槽式-上/下壓板 (迫緊塊)  
 Slot Type Clamping Element



ORDER NO.	HANDLE WITH	A	B	C
P055.020.00 UP P055.020.01 DOWN	20 SHANK	50	20	20
P060.020.00 UP P060.020.01 DOWN	20 SHANK	60	20	20
P070.025.00 UP P070.025.01 DOWN	25 SHANK	70	25	25
P110.032.00 UP P110.032.01 DOWN	32 SHANK	110	32	32