



Copyright © 2016.5 all rights reserved



**WORLD CLASS METALFORMING PRESSES  
SERVICE AND PRESS ROOM EQUIPMENT**

HAMMER PRESES BY EDPS

HQ: 400 Continental Blvd, #600, El Segundo, CA 90245  
Tel: +1-310-426-2585  
E-mail: [Info@hammerpresses.com](mailto:Info@hammerpresses.com)

[www.hamerpresses.com](http://www.hamerpresses.com)

- All specifications, dimensions and design characteristics shown in this catalogue are subject to change without notice.



Follow us

# HAMMER PRESSES BY EDPS

**15-2500Tons**

our continuously persistent development history  
is our incomparable wealth!

[WWW.HAMMERPRESSES.COM](http://WWW.HAMMERPRESSES.COM)





Located in zhejiang north of xiangshan, Yidudan Precision Machinery Co, Ltd is superior in geographical location and convenient in transportation, from the high-speed entrance only 2 kin, 56km to Beilun Port, the Oriental Super Port, and 56km to Ningbo International Airport. Corporate headquarters and various production plants are reasonable in layout and orderly in management, with good and sustainable basic conditions.

YIDUDAN Company specially produces precision and high-speed punches (15-2000Tons), possessing such advanced quality control means as supet-huge CNC machining devices in quantity, precision testers, and whole set of physical and chemcial devices, realizing such enterprise Information engineerings as ERP, PDM, and CAM etc. and having strain capacity In quickly resposning market demands.

YIDUDAN Company Insists In the quality policy of "pursue qualitiy, serve wholeheartedly", Improves all quality awareness and work quality level continuously, defintes quality objectives and principles to be followed, and guarantees dominant position of products' advancement and reliability in market competition.Welcome customers to choose and purchase products in special requirements.



## MANUFACTURING STANDARD



### JIS 1

Japanese Industry Standard 1 class



## Processing Equipment



## Product process

- Complete machine is processed with the use of CNC cutting, CO2 welding, and tempering.
- Body and sliding blocks are processed with the use of CNC milling machine.
- Gears are processed with the use of German gear grinding machine.
- Friction parts, such as curves and saws, are processed through heat treatment and grinding, with the use of alloy steel.
- Adopt Japanese bearings, oil seals, and air valves;
- Thorough electric loop design meets European standard.

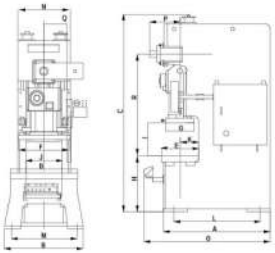


# APA SERIES

High precision power press machine

15T~400Tons

- In order to guarantee relative stationarity of machine operation, it is necessary to balance two balancers.
- Moulding-adjustment precision is as high as 0.1mm, safe, speedy, and reliable.



All specifications, dimensions and design characteristics shown in this catalogue are subject to change without notice.

## Performance feature

- With high rigidity rack design, they are welded with the use of high-quality steel plates, through relieving of internal stresses, so that stability and reliability of the whole machine in precision are enhanced.
- Consistent driving center and machine center to guarantee accurate and stable punching.
- Through hard oxidation and grinding, such parts as bent axles, gear sets, and connecting rods possess higher combination property and tolerance.
- Adopt highly sensitive and reliable clutch/brake and internationally top duplex magnetic valve, as well as overload protection devices, to guarantee precision and safety for operation and stop of press rams.
- Machine's structural design shall be reasonable, for the convenience of realizing automatic production, reducing cost, and improving efficiency.
- Possess advanced design concepts, low noise, low consumption, and energy saving.

## Standard configuration

- > Inverter
- > Hydraulic over-load protector
- > Electrical automatic lubrication system
- > Manual slide adjust device (80Tons and below)
- > Slide adjust device(80Tons and above)
- > Automatic die height indicator (60Tons and below)
- > Die height indicator (80Tons and above)
- > Balance device
- > Rotary cam switch
- > Misfeed detection consent
- > Power supply
- > Crank angle indicator
- > Electrical stroke counter
- > Air source connector
- > Against over-run safety device
- > Air ejector
- > Maintenance tool box
- > Operation manual

## Optional configuration

- > High performance wet clutch & brake
- > Pneumatic die cushion device
- > Foot switch
- > Quick die change device (die lifter, clamp and die arm sepjes )
- > Slide knock-out device
- > Anti-vibration press mount
- > Photo-electronic safety device
- > Feeder
- > Uncoiler
- > Straightener
- > Mechanism hand
- > Die light
- > Touch screen(preset, total counter)
- > PAC 100 counter system
- > Human-computer counter system

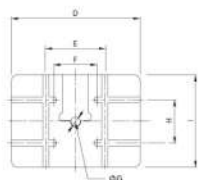
## Overall dimension

DIMENSION	APA-15	APA-25	APA-35	APA-45	APA-60	APA-80	APA-110	APA-160	APA-200	APA-260	APA-315	APA-400
A	1080	1100	1200	1400	1420	1595	1720	2140	2140	2440	2440	2605
B	740	840	900	950	1000	1170	1290	1390	1490	1500	1500	1950
C	2098	2135	2345	2425	2780	2980	3195	3462	3612	4070	4470	4825
D	680	680	800	850	900	1000	1150	1250	1350	1500	1500	1600
E	300	300	400	440	500	550	600	760	820	820	840	900
F	470	470	520	560	700	770	910	990	990	1130	1130	1130
G	250	250	285	340	400	420	470	550	550	630	700	750
H	785	800	790	790	785	830	830	900	900	995	1030	1185
I	260	260	290	320	420	480	530	600	660	660	750	830
J	432	444	488	502	526	534	616	660	720	880	890	970
K	155	160	205	225	255	280	305	385	415	415	430	450
L	880	980	1040	1170	1180	1310	1420	1760	1760	1830	2005	2180
M	640	700	800	840	890	980	1100	1200	1300	1500	1560	1660
N	528	540	620	670	720	780	920	1000	1100	1260	1300	1420
O	1255	1275	1375	1575	1595	1770	1895	2420	2420	2735	2780	2780
P	278	278	278	313	333	448	488	545	593	688	688	723
Q	447	447	560	585	610	620	685	775	825	895	875	925
R	935	935	1073	1130	1378	1506	1650	1910	1970	2188	2460	2595

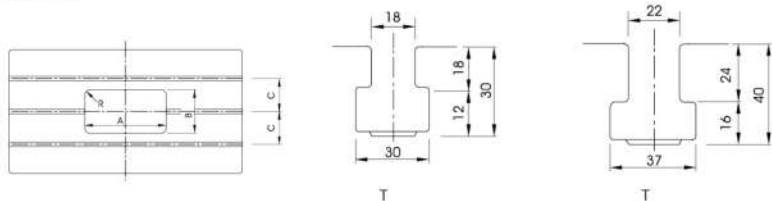
### Technical parameters

Name		APA-15	APA-25A	APA-25	APA-35	APA-45	APA-60	APA-80	APA-110	APA-160	APA-200	APA-260	APA-315	APA-400	
Model		V	V	V H	V H	V H	V H	V H	V H	V H	V H	V H	V H	V H	
Capacity	ton	15	25	25	35	45	60	80	110	160	200	260	315	400	
Rated tonnage point	mm	1	3.2	3.2 1.6	3.2 1.6	3.2 1.6	4 2	4 2	6 3	6 3	6 3	6 3	7 3.5	7 3.5	
Speed changing	s.p.m	120-180	60-140	60-140 130-200	40-120 110-180	40-100 100-150	35-90 80-120	35-80 80-120	30-60 60-90	20-50 40-70	20-50 40-70	20-50 50-70	20-40 40-50	20-35 35-50	
Stable speed	s.p.m	130	110	110	85	75	65	65	50	35	35	35	30	30	
Stroke	mm	60	80	60 30	70 40	80 50	120 60	150 70	180 80	200 90	200 90	200 100	250 150	280 170	
Max.die height	mm	200	195	200 215	220 235	250 265	310 340	340 380	360 410	400 450	460 510	460 510	500 550	550 600	
Slide adjustment	mm	50	50	50	55	60	75	80	80	100	100	110	120	120	
Slide area	mm	470x250x50	470x250x50	470x250x50	520x285x50	560x340x60	700x400x70	770x420x70	910x470x80	990x550x90	990x550x90	1130x630x90	1130x700x110	1130x750x110	
Bolster area	mm	680x300x70	680x300x65	680x300x70	800x400x70	850x440x80	900x500x80	1000x550x90	1150x600x110	1250x760x140	1350x820x140	1400x820x140	1500x840x180	1600x900x200	
Shank hole	mm	∅38.1	∅38.1	∅38.1	∅38.1	∅38.1	∅50	∅50	∅50	∅65	∅65	∅65	∅65	∅65	
Main motor	kw.p	2.2x6	3.7x4	3.7x4	3.7x4	5.5x4	5.5x4	7.5x4	11x4	15x4	18.5x4	22x4	30x4	37x4	
Slide adjust device		Manual operation							Electrial driving						
Air pressure	Mpa	0.6	0.6	0.6	0.6	0.6	0.6	0.6	0.6	0.6	0.6	0.6	0.6	0.6	
Presses precision		GB(JIS)1class	GB(JIS)1class	GB(JIS)1class	GB(JIS)1class	GB(JIS)1class	GB(JIS)1class	GB(JIS)1class	GB(JIS)1class	GB(JIS)1class	GB(JIS)1class	GB(JIS)1class	GB(JIS)1class	GB(JIS)1class	
Presses dimension	mm	1236x830x1920	1280x850x2200	1280x850x2200	1380x900x2400	1575x950x2500	1595x1000x2800	1800x1100x2800	1900x1300x3200	2420x1390x3465	2420x1490x3612	2735x1780x4070	2780x1850x4470	2870x1980x4830	
Die cushion capacity	ton	-	-	-	2.3	2.3	3.6	3.6	6.3	10	10	14	14	14	
Stroke	mm	-	-	-	50	50	70	70	80	80	80	100	100	100	
Die cushion effective area	mm <sup>2</sup>	-	-	-	300x230	300x230	350x300	450x310	500x350	650x420	650x420	710x480	810x480	810x480	

### Slide



### Bolster



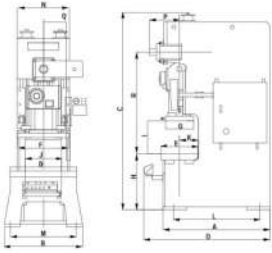
Model	A	B	C	D	E	F	G	H	I
APA-15	240	120	90	470	-	150	∅ 38.1	80	250
APA-25A	240	120	90	470	-	150	∅ 38.1	80	250
APA-25	240	120	90	470	-	150	∅ 38.1	80	250
APA-35	280	140	120	520	-	160	∅ 38.1	100	285
APA-45	300	150	120	560	-	210	∅ 38.1	120	340
APA-60	320	160	150	700	220	220	∅ 50	160	400
APA-80	360	180	150	770	300	220	∅ 50	180	420
APA-110	400	200	160	910	300	220	∅ 50	220	470
APA-160	440	220	220	990	300	175	∅ 65	220	550
APA-200	480	240	280	990	420	200	∅ 65	300	550
APA-260	520	260	290	1130	420	200	∅ 65	300	630
APA-315	520	260	290	1130	420	200	∅ 65	300	700
APA-400	520	260	290	1130	420	200	∅ 65	300	700

# APA-A SERIES

High precision power press  
machine

160T~400Tons

- With high rigidity rack design, they are welded with the use of high-quality steel plates, through relieving of internal stresses, so that stability and reliability of the whole machine in precision are enhanced.
- Consistent driving center and machine center to guarantee accurate and stable punching.



## Performance feature

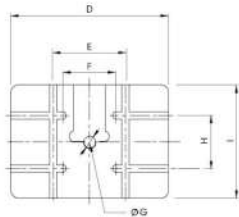
- In order to guarantee relative stationarity of machine operation, it is necessary to balance two balancers.
- Moulding-adjustment precision is as high as 0.1mm, safe, speedy, and reliable.
- Through hard oxidation and grinding, such parts as bent axles, gear sets, and connecting rods possess higher combination property and tolerance.
- Adopt highly sensitive and reliable clutch/brake and internationally top duplex magnetic valve, as well as overload protection devices, to guarantee precision and safety for operation and stop of press rams.
- Machine's structural design shall be reasonable, for the convenience of realizing automatic production, reducing cost, and improving efficiency.
- Possess advanced design concepts, low noise, low consumption, and energy saving.

## Technical parameters

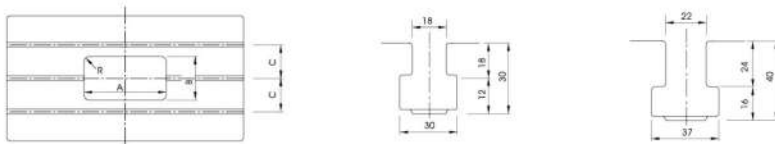
Name		APA-160A		APA-200A		APA-260A		APA-315A		APA-400A	
Model		V	H	V	H	V	H	V	H	V	H
Capacity	ton	160		200		260		315		400	
Rated tonnage point	mm	6	3	6	3	7	3.5	7	3.5	10	4
Speed changing	s.p.m	20-50	40-70	20-50	50-70	20-40	40-50	20-35	35-50	20-30	30-40
Stable speed	s.p.m	35		35		30		30		20	
Stroke	mm	200	90	200	90	250	150	280	170	280	180
Max.die height	mm	460	510	460	510	500	550	550	600	550	600
Slide adjustment	mm	100		110		120		120		120	
Slide area	mm	990x550x90		1130x630x90		1130x700x100		1130x750x110		1200x750x110	
Bolster area	mm	1250x800x140		1400x820x160		1500x840x180		1600x900x200		1800x900x200	
Shank hole	mm	Ø65		Ø65		Ø65		Ø65		Ø65	
Main motor	kw.p	15x4		18.5x4		22x4		30x4		37x4	
Slide adjust device		Electrical driving									
Air pressure	Mpa	0.6		0.6		0.6		0.6		0.6	
Presses precision		GB(JIS)1class									
Presses dimension	mm	2315x1400x3670		2615x1690x4075		2780x1850x4470		2870x1980x4830		3220x1900x4650	
Die cushion capacity	ton	10		14		14		14		14	
Stroke	mm	80		80		100		100		100	
Die cushion effective area	mm <sup>2</sup>	650x420		710x480		810x480		810x480		810x480	

All specifications, dimensions and design characteristics shown in this catalogue are subject to change without notice.

### Slide



### Bolster



### Overall dimension

Dimension	APA-160A	APA-200A	APA-260A	APA-315A	APA-400A
A	2140	2440	2440	2605	3075
B	1390	1690	1500	1950	1550
C	3670	4075	4470	4825	4825
D	1250	1400	1500	1600	1600
E	800	820	840	900	910
F	990	1130	1130	1130	1200
G	550	630	700	750	750
H	910	1030	1030	1185	1000
I	650	650	750	830	830
J	660	800	890	970	900
K	405	415	430	450	460
L	1760	1830	2005	2180	2420
M	1200	1400	1560	1660	1450
N	1000	1160	1300	1420	1360
O	2315	2615	2780	2780	3250
P	545	545	688	723	702
Q	725	805	895	925	1087
R	1960	2190	2460	2595	2460

Model	A	B	C	D	E	F	G	H	I	
APA-160A	440	220	220	990	300	175	∅65	220	550	II
APA-200A	480	240	280	990	420	200	∅65	300	630	II
APA-260A	520	260	290	1130	420	200	∅65	300	700	II
APA-315A	520	260	290	1130	420	200	∅65	300	700	II
APA-400A	520	260	290	1200	450	200	∅65	300	700	II

### Standard configuration

- > Inverter
- > Hydraulic over-load protector
- > Electrical automatic lubrication system
- > Slide adjust device
- > Die height indicator
- > Balance device
- > Rotary cam switch
- > Misfeed detection consent
- > Power supply
- > Crank angle indicator
- > Electrical stroke counter
- > Air source connector
- > Against over-run safety device
- > Air ejector
- > Maintenance tool box
- > Operation manual

### Optional configuration

- > High performance wet clutch & brake
- > Pneumatic die cushion device
- > Foot switch
- > Quick die change device  
(die lifter, clamp and die arm sepjes )
- > Slide knock-out device
- > Anti-vibration press mount
- > Photo-electronic safety device
- > Feeder
- > Uncoiler
- > Straightener
- > Mechanism hand
- > Die room light
- > Touch pad(preset, total counter)
- > Human-computer counter system

# APC SERIES

Double-crank precision steel  
frame press

110T~315Tons



## Performance feature

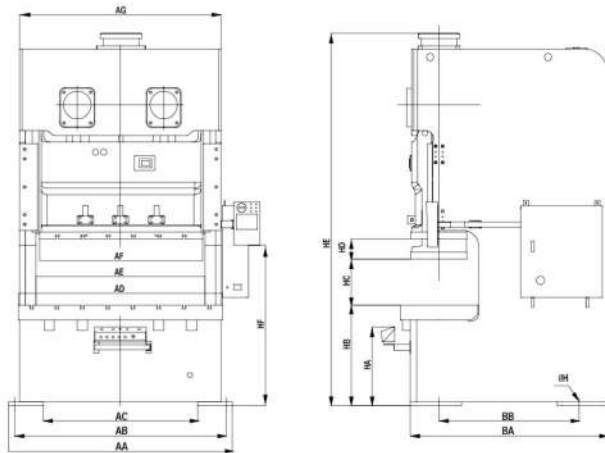
- High steel performance frame, large center span of the connecting rod, strong anti partial load, optimize design.
- In order to guarantee relative stationarity of machine operation, it is necessary to balance two balancers.
- Moulding-adjustment precision is as high as 0.1mm, safe, speedy, and reliable.
- Through hard oxidation and grinding, such parts as bent axles, gear sets, and connecting rods possess higher combination property and tolerance.
- Adopt highly sensitive and reliable clutch/brake and internationally top duplex magnetic valve, as well as overload protection devices, to guarantee precision and safety for operation and stop of press rams.
- Machine's structural design shall be reasonable, for the convenience of realizing automatic production, reducing cost, and improving efficiency.
- Possess advanced design concepts, low noise, low consumption, and energy saving.

## Technical parameters

Name		APC-110		APC-160		APC-200		APC-250		APC-315	
Model		V	H	V	H	V	H	V	H	V	H
Capacity	ton	110		160		200		250		315	
Rated tonnage point	mm	5	3	6	3	6	3	7	3.5	7	3.5
Stroke	mm	180	110	200	130	250	150	280	170	280	170
Stable speed	s.p.m	35-65	50-100	30-55	40-85	25-45	35-70	20-35	30-60	20-35	30-60
Max.die height	mm	400	435	450	485	500	550	550	605		605
Slide adjustment	mm	100		100		120		120		120	
Bolster area	mm	1800 × 650 × 130		2000 × 760 × 150		2400 × 840 × 170		2700 × 900 × 170		2700 × 900 × 170	
Slide area	mm	1400 × 500 × 70		1600 × 550 × 70		1850 × 650 × 95		2100 × 700 × 95		2100 × 700 × 95	
Main motor	kw×P	11 × 4		15 × 4		18.5 × 4		22 × 4		30 × 4	
Air pressure	Mpa	0.6		0.6		0.6		0.6		0.6	
Presses precision		JIS(CNS) 1class									
Die cushion model		Two plate & two cylinders									
Die cushion capacity	ton	3.6 × 2		6.3 × 2		10 × 2		14 × 2		14 × 2	
Air pressure	Mpa	0.6		0.6		0.6		0.6		0.6	
Stroke	mm	80		80		80		100		100	
Die cushion work part dimension	mm <sup>2</sup>	350 × 235 × 2		410 × 260 × 2		540 × 350 × 2		640 × 470 × 2		640 × 470 × 2	

All specifications, dimensions and design characteristics shown in this catalogue are subject to change without notice.





### Standard configuration

- > Dry clutch brake
- > Standard operating system of yiduan
- > Choice/cutting/inch/safe journey/continuation of operating mode
- > Oil pressure overload protection device
- > Over-run safety device
- > Duplex magnetic valve
- > Misfeed detection consent
- > Electric slider adjusting device
- > Digital moulding-height indicator (unit: 0.1 mm)
- > Electric butter lubricating device
- > Accumulative counter (6 digits)
- > Pre-determined counter (6 digits)
- > Maintenance counter (6 digits)
- > Life counter (6 digits)
- > Electronic rotary cam switch (6 connections)
- > Air-blast device 1/2" one circuit
- > Air source connector 1/2" two circuit
- > Error inspection socket
- > Power socket

### Overall dimension

Specification	APC-110		APC-160		APC-200		APC-250		APC-315	
	V	H	V	H	V	H	V	H	V	H
AA	2000		2200		2620		3000		3000	
AB	1900		2080		2460		2800		2800	
AC	1360		1520		1820		2200		2200	
AD	1800		2000		2400		2700		2700	
AE	1510		1660		1990		2220		2220	
AF	1400		1600		1850		2100		2100	
AG	1780		1980		2320		2590		2590	
BA	1745		1940		2235		2545		2545	
BB	1295		1380		1885		2195		2195	
BC	650		760		840		900		900	
BD	330		385		425		455		455	
BE	500		550		650		700		700	
HA	(630)		(730)		(790)		(820)		(820)	
HB	830	865	990	1025	1070	1120	1100	1155	1100	1155
HC	400	435	450	485	500	550	550	605	550	605
HD	180	110	200	130	250	150	280	170	280	170
HE	3059		3709		3849		4304		4304	
HF	1240		1440		1570		1680		1680	
Øh	Ø35		Ø47		Ø54		Ø54		Ø54	

### Optional configuration

- > Wet clutch brake
- > Die cushion device
- > Vs variable-speed motor
- > Touch-screen device
- > Photo-electric safety device
- > Upper slider feeding device
- > Main motor inversion device
- > Foot switch
- > Safety dog and safety latch
- > T-type two-hand button operating floor
- > Inspection variable-connection magnetic valve
- > Anti-vibration mechanical foot
- > Rapid tooling exchange
- > Upper die clamper
- > Lower die clamper
- > Die lifter
- > Mould-shift arm
- > Basic bolt and soleplate
- > Automatic feeder device
- > Three-in-one NC straightening feeder
- > NC Roll feeder
- > Three-in-one feeder and straightening machine
- > Leveller

# APD SERIES

Semi-closed high-precision  
steel frame press

80T~315Tons

## Performance feature

- With high rigidity rack design, they are welded with the use of high-quality steel plates, through relieving of internal stresses, so that stability and reliability of the whole machine in precision are enhanced.
- Consistent driving center and machine center to guarantee accurate and stable punching.
- In order to guarantee relative stationarity of machine operation, it is necessary to balance two balancers.
- Moulding-adjustment precision is as high as 0.1mm, safe, speedy, and reliable.

- Through hard oxidation and grinding, such parts as bent axes, gear sets, and connecting rods possess higher combination property and tolerance.
- Adopt highly sensitive and reliable clutch/brake and internationally top duplex magnetic valve, as well as overload protection devices, to guarantee precision and safety for operation and stop of press rams.
- Machine's structural design shall be reasonable, for the convenience of realizing automatic production, reducing cost, and improving efficiency.
- Possess advanced design concepts, low noise, low consumption, and energy saving.



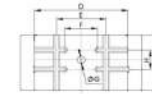
## Standard configuration

- > Inverter
- > Hydraulic overload protector
- > Electrical automatic lubrication system
- > Electric slider adjusting device
- > Electric moulding-height indicator
- > Slider and mould balancing device
- > Misfeed detection consent
- > Power socket
- > Rotary cam switch
- > Crank angle indicator
- > Counter
- > Air source connector
- > Over-run safety device
- > Maintenance tool and tool box
- > Operating manual

## Optional configuration

- > Air die cushion device
- > Preset counter
- > Preset counter
- > Foot switch
- > Quick die change device (Die lifter, die clammer, or mould-shift arm)
- > Feeding device on the slider
- > Anti-vibration foot
- > Photo-electric safety device
- > Feeder (air, machinery, and NC)
- > Uncoler
- > Straigtnener
- > Mechanism hand
- > Die lighting device
- > Left (right) feeding device
- > Hunman-computer counter system

## Slide



## Bolster



MODEL	A	B	C	D	E	F	G	H	I
APD-80	360	180	150	700	300	220	∅50	180	420
APD-110	400	200	160	830	300	220	∅50	220	470
APD-160	440	220	220	910	300	175	∅65	220	550
APD-200	480	240	280	1050	420	200	∅65	300	630
APD-260	520	260	290	1130	420	200	∅65	300	700
APD-315	540	280	300	1130	450	200	∅65	300	750

## Technical parameters

Name	APD-80		APD-110		APD-160		APD-200		APD-260		APD-315	
Model	V	H	V	H	V	H	V	H	V	H	V	H
Capacity	ton 80		110		160		200		260		315	
Rated tonnage point	mm 4	2	6	3	6	3	6	3	7	3.5	7	3.5
Stroke	mm 150	70	180	80	200	90	200	100	250	150	280	170
Max.die height	mm 340	380	360	410	460	510	460	510	500	550	550	600
Speed changing	s.p.m 35-80	80-120	30-60	60-90	20-50	40-70	20-50	50-70	20-40	40-50	20-35	30-50
Slide adjustment	mm 80		80		100		110		120		120	
Slide area	mm 700x420x70		830x470x80		910x550x90		1050x630x90		1130x700x100		1130x750x110	
Bolster area	mm 910x550x90		1100x590x110		980x800x140		1140x820x160		1500x840x180		1560x900x200	
Main motor	kwxp 7.5x4		11x4		15x4		18.5x4		22x4		30x4	
Slide adjust device	Electrial driving											
Air pressure	Mpa 0.6		0.6		0.6		0.6		0.6		0.6	
Presses dimension	mm 1300x1890x3000		1420x1985x3200		1600x2200x3500		1750x2500x3900		2080x2895x4470		2100x2925x4550	
Presses precision	GB(JIS)I class											
Die cushion capacity	ton 3.6		6.3		10		14		14		14	
Stroke	mm 70		80		80		100		100		100	
Die cushion effective area	mm <sup>2</sup> 450x310		500x350		650x420		710x480		810x480		810x480	

All specifications,dimensions and design characteristics shown in this catalogue are subject to change without notice.

# APE SERIES

Closed double-crank  
precision steel frame press

160T~600Tons

- With high rigidity rack design, they are welded with the use of high-quality steel plates, through relieving of internal stresses, so that stability and reliability of the whole machine in precision are enhanced.



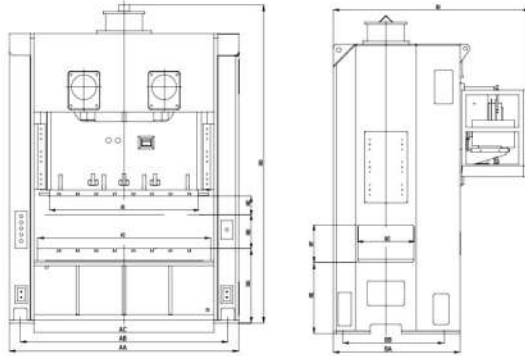
## Performance feature

- High steel performance frame, large center span of the connecting rod, strong anti partial load, optimize design.
- In order to guarantee relative stationarity of machine operation, it is necessary to balance two balancers.
- Moulding-adjustment precision is as high as 0.1mm, safe, speedy, and reliable.
- Through hard oxidation and grinding, such parts as bent axles, gear sets, and connecting rods possess higher combination property and tolerance.
- Adopt highly sensitive and reliable clutch/brake and internationally top duplex magnetic valve, as well as overload protection devices, to guarantee precision and safety for operation and stop of press rams.
- Machine's structural design shall be reasonable, for the convenience of realizing automatic production, reducing cost, and improving efficiency.
- Possess advanced design concepts, low noise, low consumption, and energy saving.

## Technical parameters

Name	APE-160		APE-200		APE-250		APE-300		APE-400		APE-500		APE-600	
Model	S	H	S	H	S	H	S	H	S	H	S	H	S	H
Capacity	ton 160		200		250		300		400		500		600	
Rated tonnage point	6	3	6	3	7	3	7	3	7	3	10	6	10	6
Stroke	180	130	250	150	280	170	300	170	300	170	300	180	300	180
Speed changing	s.p.m 30-55	40-85	20-50	35-70	20-40	30-60	20-35	30-50	20-30	20-40	18-25	20-30	15-25	20-30
Max.die height	450	400	500	450	550	450	550	450	550	450	580	480	600	500
Slide adjustment	mm 100		120		120		120		120		120		120	
Slide area	mm 1600 × 650		1850 × 750		2300 × 900		2300 × 900		A: 2300 × 1000 B: 2500 × 1000 C: 2900 × 1000		3000 × 1000		3200 × 1100	
Bolster area	mm 1800 × 760		2200 × 940		2500 × 1000		2500 × 1000		A: 2500 × 1000 B: 2800 × 1000 C: 3200 × 1000		3300 × 1200		3500 × 1200	
Side opening	mm 700 × 450		900 × 600		900 × 600		900 × 600		900 × 600		1000 × 750		1100 × 750	
Main motor	Kw×P 15 × 4		18.5 × 4		22 × 4		30 × 4		37 × 4		45 × 4		55 × 4	
Slide adjust device	Kw×P 1×4		2×4		2×4		2×4		2×4		3×4		1×4	
Air pressure	Mpa 0.6		0.6		0.6		0.6		0.6		0.6		0.6	
Presses precision	GB(JIS)1class													

All specifications, dimensions and design characteristics shown in this catalogue are subject to change without notice.



### Standard configuration

- > Dry clutch brake
- > standard operating system of yiduan
- > Choice/cutting/inch/safe journey/continuation of operating mode
- > Oil pressure overload protection device
- > Over-run safety device
- > Duplex magnetic valve
- > Misfeed detection consent
- > Electric slider adjusting device
- > Digital moulding-height indicator (unit: 0.1 mm)
- > Auto grease pump device
- > Accumulative counter (6 digits)
- > Pre-determined counter (6 digits)
- > Maintenance counter (6 digits)
- > Life counter (6 digits)
- > Electronic rotary cam switch (6 connections)
- > Air-blast device 1/2" one circuit
- > Air source connector 1/2" two circuit
- > Error inspection socket
- > Power socket

### Overall dimension

Specification	APE-160		APE-200		APE-250		APE-300		APE-400		APE-500		APE-600	
Model	S	H	S	H	S	H	S	H	S	H	S	H	S	H
AA	2590	3000	3600	3600	A:3500/B:3700/C:4100		4300	4700						
AB	2240	2650	3250	3250	A:3150/B:3350/C:3750		3900	4250						
AC	1800	2200	2500	2500	A:2500/B:2800/C:3200		3300	3500						
AD	1880	2290	2800	2800	A:2700/B:2900/C:3300		3400	3650						
AE	1600	1850	2300	2300	A:2300/B:2500/C:2900		3000	3200						
BA	1400	1600	1815	1865	2050		2210	2550						
BB	1200	1260	1375	1505	1550		1760	2200						
BC	700	900	900	900	900		1000	1100						
BD	2150	2800	3024	3040	3164		3510	3900						
HA	800	1000	1150	1200	1200		1345	1400						
HB	450	400	500	450	550	450	550	450	550	450	580	480	600	500
HC	190	130	250	150	280	170	300	170	300	170	300	180	300	180
HD	3400	3300	4116	3966	4330	4040	4535	4570	4850	4650	5500	5620	6100	5870
HE	900	940	1000	1000	1150		1290	1350						
HF	450	600	600	600	600		750	750						

### Optional configuration

- > Wet clutch brake
- > Die cushion device
- > Vs variable-speed motor
- > Touch-screen device
- > Photo-electric safety device
- > Upper slider feeding device
- > Main motor inversion device
- > Foot switch
- > Safety dog and safety latch
- > T-type two-hand button operating floor
- > Inspection variable-connection magnetic valve
- > Anti-vibration mechanical foot
- > Rapid tooling exchange
- > Upper die clamber
- > Lower die clamber
- > Die lifter
- > Mould-shift arm
- > Basic bolt and soleplate
- > Automatic feeder device
- > Three-in-one NC straightening feeder
- > NC Roll feeder
- > Three-in-one feeder and straightening machine
- > Leveller

# APK SERIES

Single-point high-speed type  
press

80T~200Tons

## Performance feature

- Control machine tools' actions with the use of rotary encoder and adopt human-computer interface system, for the convenience of human-computer communication.
- Lock connecting rod oil pressure and enhance precision of bottom dead center.
- With huge cost performance, they apply to motor totor punching.



## Standard configuration

- > Electric moulding-height adjustmnet
- > Moulding-height display precision: 0.01mm
- > Inch positioning device
- > Three-group batch control
- > Two-group misfeed inspection
- > Inter-action and single-action tools have 0° and 90° locate function
- > Forward/reverse device
- > Oil-pressure slider fixed-locking device
- > Independent electric control box
- > Main motor transducer control

## Optional configuration

- > Bottom dead center precision detector
- > Quick die-clamping device
- > High-speed feeder
- > Double-end oil-pressure uncoiler
- > Leveling discharging machine
- > Shockproof device
- > Stamping controller

## Technical parameters

Name		APK-80	APK-125	APK-160	APK-200
Capacity	ton	80	125	160	200
Rated tonnage point	mm	2	3	3	3
Stroke	mm	30	20 30	30	30
Speed changing	s.p.m	160~280	160~280 160~240	160~220	150~200
Max.die height	mm	360	400	400	400
Slide adjustment	mm	50	50	50	50
Distance between the column	mm	920	1160	1360	1320
Slide area	mm	800x500	1000x550	1200x600	1200x600
Bolster area	mm	900x500	1100x600	1300x700	1300x800
Material hole	mm	450x150	600x150	600x250	600x250
Main motor	kwxp	11	18.5	22	30
Air pressure	Mpa	0.6	0.6	0.6	0.6
Presses precision		GB(JIS)1class			

All specifications,dimensions and design characteristics shown in this catalogue are subject to change without notice.

# STS SERIES

Single crank precision press machine

200T~1000Tons

- Mix European, American, and Japanese advanced technologies/functional structure CAE dynamic simulation optimization design
- High-rigidity lathe bed high-quality steel profiling welding or in-block casting part tempering/vibration stress processing



- High-standard fabrication processing of such key parts as gears and bent axes through hard chrome plating/nitriding/grinding
- Such high-level configurations as high-performance controllers/drive parts/electromagnetic clutches/steam-driven elements and bearings.



All specifications, dimensions and design characteristics shown in this catalogue are subject to change without notice.

## Performance feature

- Technical grade of international stamping equipment and inspection of machine index
- High-response multi-functional superposition expansion/high-quality industrial control processor
- High-memory module/individual design franchised software compilation
- High-compatibility multi-axial variable speed drive/automation equipment onboard expansion
- High-intelligent human-computer interface/high-frequency real-time control/Ethernet & USB interface

## Standard configuration

- > Hydraulic overload protector
- > Electric slider adjusting device
- > Digital moulding-height indicator (unit: 0.1 mm)
- > Slider and mould balancing device
- > Rotary cam switch
- > Crank angle indicator
- > Circulation centralization lubrication oil feeding device
- > Electromagnetic journey counter
- > Over-run safety device
- > Programmable controller
- > Mobile T-type operating floor
- > Air source connector
- > Independence electric control cabinet
- > Maintenance tool and tool box

## Optional configuration

- > Die cushion
- > Slider knock-out device
- > Mould lamp
- > Main motor forward/reverse device
- > Photo-electric safety device
- > Safety groove and safety pin
- > Pre-determined counter (6 digits)
- > Loading inspection device
- > Misfeed detection consent
- > Inverter
- > Basic bolt and soleplate
- > Anti-vibration foot
- > Safety shelf and safety ladder
- > Power socket
- > Quick die change device

## Technical parameters

Name	单位	STS-200	STS-250	STS-300	STS-400	STS-500	STS-600	STS-800	STS-1000
Capacity	ton	200	250	300	400	500	600	800	1000
Rated tonnage point	mm	4	7	9	7	13	7	13	13
Stroke	mm	40	250	170	280	300	170	300	250
Speed changing	s.p.m	60-130	20-40	50-110	20-40	20-35	20-35	20-30	20-40
Max. die height	mm	350	550	380	550	650	550	600	650
Maximum counterbalancer capacity	kg	1000	1200	800	800	1500	1500	1500	1500
Slide adjustment	mm	100	150	100	150	150	150	150	150
Slide area	mm	900x800	900x800	1000x900	1300x1200	1400x1200	1500x1200	1600x1300	1500x1200
Bolster area	mm	1000x900	1000x900	1100x1000	1400x1200	1500x1200	1600x1200	1700x1400	1600x1200
Bolster thickness	mm	170	170	180	180	200	200	220	220
Side opening	mm	400x400	400x400	400x400	400x400	400x400	500x500	500x500	500x500
Height of the top surface of bed from floor level	mm	850	850	850	850	850	1090	1090	1200
Main Motor	Hp x p	18.5 x 4	22 x 4	30 x 4	37 x 4	45 x 4	55 x 4	75 x 4	110 x 4
Slide adjusting moter	kw x p	0.75 x 4	1.5 x 4	1.5 x 4	2.2 x 4	3 x 4	3 x 4	3.7 x 4	7.5 x 4
Air pressure	Mpa	0.6	0.6	0.6	0.6	0.6	0.6	0.6	0.6
Frame structure		one piece frame				tie rod type			
Presses precision		GB(JIS)1 class							

# APF SERIES

Single-krank precision press

80T~600Tons

- Mix European, American, and Japanese advanced technologies/functional structure CAE dynamic simulation optimization design
- High-rigidity lathe bed high-quality steel profiling welding or in-block casting part tempering/vibration stress processing



- High-standard fabrication processing of such key parts as gears and bent axes through hard chrome plating/nitriding/grinding
- Such high-level configurations as high-performance controllers/drive parts/electromagnetic clutches/steam-driven elements and bearings



All specifications, dimensions and design characteristics shown in this catalogue are subject to change without notice.

## Performance feature

- Technical grade of international stamping equipment and inspection of machine index
- High-response multi-functional superposition expansion/high-quality industrial control processor
- High-memory module/individual design franchised software compilation
- High-compatibility multi-axial variable speed drive/automation equipment onboard expansion
- High-intelligent human-computer interface/high-frequency real-time control/Ethernet & USB interface

## Standard configuration

- > Hydraulic overload protector
- > Electric slider adjusting device
- > Digital moulding-height indicator (unit: 0.1 mm)
- > Slider and mould balancing device
- > Rotary cam switch
- > Crank angle indicator
- > Electrical automatic lubrication system
- > Electromagnetic journey counter
- > Over-run safety device
- > Programmable controller
- > Mobile T-type operating floor
- > Air source connector
- > Independence electric control cabinet
- > Maintenance tool and tool box

## Optional configuration

- > Die cushion
- > slider knock-out device
- > Mould lamp
- > Main motor forward/reverse device
- > Photo-electric safety device
- > Safety groove and safety pin
- > Pre-determined counter (6 digits)
- > Loading inspection device
- > Misfeed detection consent
- > Inverter
- > Basic bolt and soleplate
- > Anti-vibration foot
- > Safety shelf and safety ladder
- > Power socket
- > Quick die change device

## Technical parameters

Name		APF-80	APF-110	APF-160	APF-200	APF-260	APF-300	APF-400	APF-500	APF-600
Model		V H	V H	V H	V H	V H	V H	V H	V H	V
Capacity	ton		110	160	200	260	300	400	500	600
Rated tonnage point	mm	4 2	6 3	6 3	6 3	7 3.5	7 3.5	7 3	10	10
Stroke	mm	150 70	180 80	200 90	200 100	250 150	300 170	300 170	250	250
Speed changing	s.p.m	35-80 80-120	30-60 60-90	20-50 40-70	20-50 50-70	20-40 40-50	20-40 35-50	20-35 35-45	20-30	15-20
Stable speed	s.p.m	65	50	35	35	30	30	20	20	20
MAX.die height	mm	340 380	360 410	460 510	460 510	500 550	550 615	550 600	550	550
Slide adjustment	mm	80	80	100	110	120	120	120	120	120
Slide area	mm	900x500x70	1000x550x70	1000x600x90	1100x650x90	1200x700x100	1300x800x110	1400x900x110	1400x1000x110	1500x1200x110
Bolster area	mm	1000x600x90	1100x600x110	1200x800x140	1300x820x160	1400x840x180	1500x950x200	1600x1000x200	1600x1000x220	1700x1300x240
Side opening	mm	600x450	600x450	600x450	700x600	800x600	900x600	1000x750	1000x800	1000x900
Main motor	kw x p	7.5x4	11x4	15x4	18.5x4	22x4	30x4	37x4	45x4	55x4
Slide adjust device	kw x p	0.4x4	0.4x4	0.75x4	0.75x4	1.5x4	1.5x4	2.2x4	3x4	3x4
Air pressure	Mpa	0.6	0.6	0.6	0.6	0.6	0.6	0.6	0.6	0.6
Presses precision		GB (JIS) class								

# EDS SERIES

Single crank post guider press

25T~110Tons

- Moulding-adjustment precision is as high as 0.1mm, safe, speedy, and reliable.
- Through hard oxidation and grinding, such parts as bent axles, gear sets, and connecting rods possess higher combination property and tolerance.



All specifications, dimensions and design characteristics shown in this catalogue are subject to change without notice.

## Performance feature

- Adopt highly sensitive and reliable clutch/brake and internationally top duplex magnetic valve, as well as overload protection devices, to guarantee precision and safety for operation and stop of press rams.
- Machine's structural design shall be reasonable, for the convenience of realizing automatic production, reducing cost, and improving efficiency.
- Possess advanced design concepts, low noise, low consumption, and energy saving.

## Standard configuration

- > Inverter
- > Hydraulic overload protector
- > Electrical automatic lubrication system
- > Electric slider adjusting device
- > Touch screen (pre-judge, pre-cut, and total count)
- > Slider and mould balancing device
- > Misfeed detection consent
- > Power socket
- > Crank angle indicator
- > Counter
- > Air source connector
- > Over-run safety device

## Optional configuration

- > Wet clutch
- > Pneumail die cushion device
- > Foot switch
- > Quick die change device (Die lifter, die clumper, or die slide knock-out device)
- > Feeding device on the slider
- > Anti-vibration foot
- > Photo-electric safety device
- > Feeder (pneumatil mechanical, and NC)
- > Manilamp

## Technical parameters

Name		EDS-25		EDS-35		EDS-45		EDS-60		EDS-80		EDS-110	
Model		V	H	V	H	V	H	V	H	V	H	V	H
Capacity	ton	25		35		45		60		80		110	
Rated tonnage point	mm	6	3	6	3	6	3	6	3	6	3	6	3
Speed changing	s.p.m	75-150	150-250	60-120	120-240	50-100	100-200	42-85	75-150	37-75	55-110	32-65	50-100
Stable speed	s.p.m	125		100		80		70		60		50	
Stroke	mm	80	30	80	40	100	50	120	90	130	100	150	110
Max.die height	mm	200	225	210	230	250	275	300	315	320	335	350	370
Slide adjustment	mm	50		55		60		70		80		100	
Slide area	mm	300 x 230		350 x 300		400 x 350		500 x 400		550 x 450		620 x 530	
Bolster area	mm	750 x 300 x 70		800 x 400 x 85		900 x 450 x 110		900 x 550 x 130		1000 x 600 x 140		1150 x 680 x 150	
Shank hole	mm	Ø38		Ø38		Ø38		Ø50		Ø50		Ø50	
Main motor	kw.p	2.2 x 4		2.2 x 4		3.7 x 4		5.5 x 4		7.5 x 4		11 x 4	
Slide adjust device	kw.p	0.2 x 4		0.2 x 5		0.2 x 4		0.4 x 4		0.4 x 4		0.4 x 4	
Air pressure	Mpa	0.6		0.6		0.6		0.6		0.6		0.6	
Presses precision		GB(JIS)1class											
Die cushion													
Model		-	-	-	-	S-240-50	S-240-50	S-240-50	S-240-50	S-300-70	S-300-70	S-350-80	S-350-80
Die cushion capacity	ton	-	-	-	-	2.3	2.3	2.3	2.3	3.6	3.6	4.7	4.7
Stroke	mm	-	-	-	-	50	50	50	50	70	70	80	80
Die cushion effective area	mm <sup>2</sup>	-	-	-	-	300 x 230	300 x 230	300 x 230	300 x 230	350 x 300	350 x 300	450 x 300	450 x 300



# EDL SERIES

Stroke adjustable strong steel  
frame press

60T~160Tons

- The precision of mold adjusting up to 0.1mm,safety,reliable and convenient.
- Crank, gear,connect bar are oxidized hardening and milled, having super comprehensive mechanical performance and durable function.



All specifications,dimensions and design characteristics shown in this catalogue are subject to change without notice.

## Performance feature

- Reasonable structural design, is benefit for automation production and reduce cost ,improve efficiency.
- Advanced design principle, low noise, low consumption, low cost , save energy.
- With high rigidity design in machine frame , the machine body is welded of quality steel sheet and treated by tension elimination, improve stability and reliability of precision of the machine.
- Keep the transmission center and machine center in uniformity, guarantee the precision of pressing.
- In order to guarantee the machine running in stable and smooth, adopts the design of symmetrical boards with balancer.
- Six-speed adjustable ram stroke, suitable for a variety of different molds Die height use.

## Standard configuration

- > Inverter
- > Hydraulic over-load protector
- > Electrical automatic lubrication system
- > Manual slide adjust device (60Tons and below)
- > Slide adjust device(80Tons and above)
- > Automatic die height indicator (60Tons and below)
- > Die height indicator(60Tons and above)
- > Balance device
- > Rotary cam switch
- > Misfeed detection consent
- > Power supply
- > Crank angle indicator
- > Electrical stroke counter
- > Air source receptacle
- > Against over-run safety device
- > Air ejector
- > Maintenance tool box
- > Operation manual

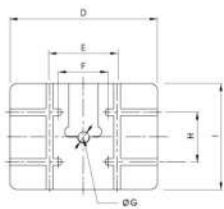
## Optional configuration

- > Wet clutch & brake
- > Pneumatic die cushion device
- > Foot switch
- > Quick die change device(die lifter, clamp and die arm sepjes )
- > Slide knock-out device
- > Anti-vibration press mount
- > Photo-electronic safety device
- > Feeder
- > Uncoiler
- > Straightener
- > Mechanism hand
- > Die room light
- > Touch screen(preset, total counter)
- > Man-machine control system

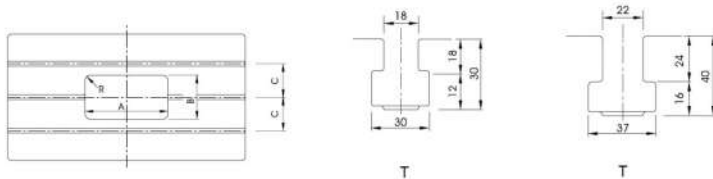
### Technical parameters

Name		EDL-60	EDL-80	EDL-110	EDL-160
Capacity	ton	60	80	110	160
Rated tonnage point	mm	4	4	6	6
Speed changing	s.p.m	35-90	35-80	30-60	20-50
Stable speed	s.p.m	65	65	50	35
Stroke	mm	20-100	25-120	25-160	30-180
MAX.die height	mm	310	340	370	470
Slide adjustment	mm	75	80	80	100
Slide area	mm	700×400×70	770×420×70	910×470×80	990×550×90
Bolster area	mm	900×500×80	1000×550×90	1150×600×110	1250×800×140
Shank hole	mm	Ø50	Ø50	Ø50	Ø65
Main motor	kw.p	5.5×4	7.5×4	11×4	15×4
Slide adjust device		Manual operation		Electrial driving	
Air pressure	Mpa	0.6	0.6	0.6	0.6
Presses precision		GB(JIS)1class	GB(JIS)1class	GB(JIS)1class	GB(JIS)1class
Presses dimension	mm	1595×1000×2800	1800×1100×2800	1900×1300×3200	2420×1390×3465
Die cushion capacity	ton	3.6	3.6	6.3	10
Stroke	mm	70	70	80	80
Die cushion effective area	mm <sup>2</sup>	350×300	450×310	500×350	650×420

### Slide



### Bolster



Model	A	B	C	D	E	F	G	H	I	T
EDL-60	320	160	150	700	220	220	Ø 50	160	400	II
EDL-80	360	180	150	770	300	220	Ø 50	180	420	II
EDL-110	400	200	160	910	300	220	Ø 50	220	470	II
EDL-160	440	220	220	990	300	175	Ø 50	220	550	II

# APB SERIES

High-speed precision punch

25T~45Tons

- Body adopts integrated special cast iron alloy, with relieving of internal stress through technology for heating processing, to ensure high precision, high rigidity, and anti-vibration.
- Sliders are designed in length, so as to guarantee operation precision and stability.



## Performance

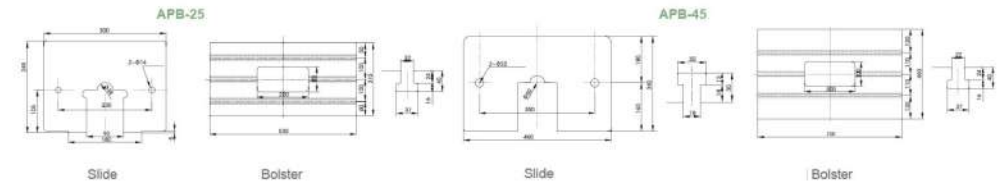
- Adopt highly sensitive and reliable clutch/brake and internationally top duplex magnetic valve, to guarantee precision and safety for operation and stop of press rams.
- Thorough electric loop design meets European standard.
- Machine's structural design shall be reasonable, for the convenience of realizing automatic production, reducing cost, and improving efficiency.

## Standard configuration

- Sticking release device
- Air-blast device
- Automatically-recirculating lubrication device
- Manual slider adjusting device
- Counter
- Programmable logical controller
- Slider and mould balancing device
- Rotary cam switch
- Crank angle indicator
- Air source connector

## Optional configuration

- Anti-vibration pad
- Inverter
- Die lighting device
- Preset counter
- Feeder
- Misfeed detection consent
- Electronic cam display
- Man-machine control system



## Technical parameters

Name		APB-25	APB-45
Capacity	ton	25	45
Stroke	mm	30	30
Max.die height	mm	200	240
Speed changing	s.p.m	200-400	200-400
Slide hight adjustment	mm	50	75
Slide area	mm	300x245x50	460x340x70
Bolster area	mm	520x310x70	720x460x80
Bed opening ( LR×FB )	mm	300x160	360x200
Main motor	kw×p	2.2×4	5.5×4
Max.weight of upper die	kg	30	150
Presses dimension	mm	1100x760x1800	1700x1000x2400
Presses precision		GB(JIS)1class	GB(JIS)1class

All specifications,dimensions and design characteristics shown in this catalogue are subject to change without notice.

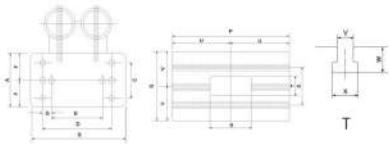
# API SERIES

High-speed precision press machine

## 25T~60Tons

- Adopt integrated high-strength casting machine, with stress relief, to guarantee long-term precision.
- Three-circle guide pillar slider structure, adopting alloy steel bush and forced lubrication, so that thermal change can fall to the minimum while precision may reach to the maximum.

### Slide bolster



- Dynamic equilibrium system is used to balance bent axes and vibration generated when slider runs up and to control stability of bottom dead center.
- Manual moulding-height adjustment is equipped with moulding-height indicator and oil-pressure clamping device.



### Performance feature

- Human-computer interface (electronic cam + rotary encoder) operation is convenient and accurate.
- Operating functions are integrated on LCD, displaying engine base's malfunction contents automatically.
- Adopt highly sensitive and reliable clutch/brake and internationally top duplex magnetic valve, to guarantee precision and safety for operation and stop of press rams.
- With thorough electric loop design, they can be matched with various automatic devices, to conduct automatic production, to reduce cost, and to improve efficiency.

### Standard configuration

- Top stop
- Manual slider adjusting device
- Slide-height indicator
- Inverter
- Programmable control (PLC)
- Touch screen (pre-judge, pre-cut, and total count)
- Encoder (electronic) reserved (2 groups)
- Operation box
- Air source connector
- Sticking release device
- Main motor (adjustable speed)
- Hydraulic die lacker
- Mechanical crank angle indicator
- Forced circulation oil device
- Tool box
- Operating manual
- Power socket
- Independence electronic control cabinet

### Optional configuration

- Anti-vibration pad
- Feeder
- Uncolor
- Oil lubrication system device
- Bottom dead center detector
- Oil cooler
- Die light
- Air-blast device

Model	A	B	C	D	E	F	G	P	Q	R	S	T	U	V	W	X	Y
API-25	205	300	150	212	190	102.5	25	600	300	200	180	100	300	150	30	30	18
API-45	320	420	150	340	260	160	40	700	415	240	240	120	350	205	40	37	22
API-60	340	550	240	360	300	170	40	840	470	320	270	160	420	235	40	37	22

### Technical parameters

Name		API-25	API-45	API-60
Capacity	ton	25	45	60
Stroke	mm	30	30	30
Speed changing	s.p.m	200-600	200-800	200-500
Max.die height	mm	200-800	200-700	200-600
Slide area	mm	300x205	420x320	550x340
Bolster area	mm	600x300x80	700x415x100	840x470x105
Slide adjustment	mm	30	30	30
Bed opening	mm	200x100	240x120	320x160
Main motor	kwxp	3.7	5.5	7.5
Lubrication		Forceful Autom ation	Forceful Autom ation	Forceful Autom ation
Speed control		Inverter	Inverter	Inverter
Clutch & brake		Air & Friction	Air & Friction	Air & Friction
Auto top stop		Standard	Standard	Standard
Vibration system		Optional	Optional	Optional

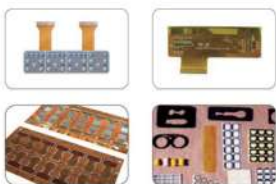
All specifications, dimensions and design characteristics shown in this catalogue are subject to change without notice.

# JDS SERIES

jds series special servo punch

10T~25Tons

- Servo direct drive transmission mechanism is adopted. Extend the service life of the die, effectively reduce noise, reduce vulnerable parts, low maintenance cost
- It is equipped with programmable logic controller (PLC) and man-machine interface. It can diagnose and display abnormal conditions by itself.
- JDS series of precision servo small punches are widely used in FPC and die-cutting printing industries. It not only meets the requirements of pre-interruption, but also is quiet and noiseless, and can meet the requirements of dust-free workshop and automatic production assembly line.



All specifications, dimensions and design characteristics shown in this catalogue are subject to change without notice.

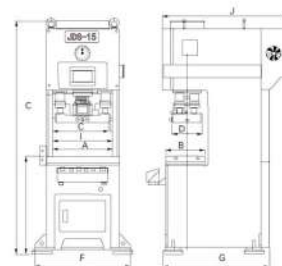
## Standard configuration

- > Manual slider adjustment device
- > Electric grease oil lubrication device
- > Slide & mold balancer
- > Servo drive deceleration device
- > Manual slider locking device
- > Mechanical crankshaft angle indicator
- > Digital die height indicator(0.01 MM)
- > stroke counter(6 digits)
- > Programmable counter PLC
- > Man-Machine interface
- > Servo motor + servo drive
- > Main motor forward/reverse device
- > Air source connector
- > Misfeed detection device
- > Hidden electrical box behind the frame
- > Isolator mount device

## Optional configuration

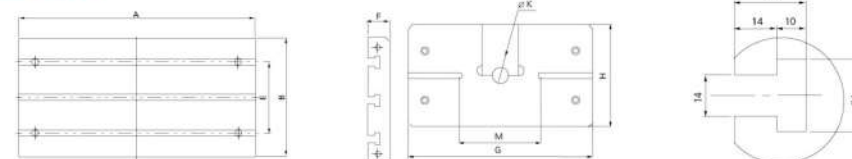
- > Photoelectric protection device
- > LED die light
- > Automatic slider locking device
- > Air ejector
- > FPC special feed manipulator
- > Electric oil lubrication device

## Overall dimension



	JDS-10	JDS-15	JDS-25
A	600	600	650
B	300	300	300
C	450	450	500
D	250	250	250
E	805	805	805
F	780	780	830
G	853	853	910
H	1914	1940	2010
I	488	488	524
J	1060	1150	1250

## Bolster area



	A	B	E	F	G	H	M	X
JDS-10	600	300	180	50	450	250	200	38.1
JDS-15	600	300	180	50	450	250	200	38.1
JDS-25	650	300	180	65	500	250	200	38.1

## Technical parameters

		JDS-10		JDS-15		JDS-25	
Capacity	Ton	10		15		25	
Stroke	mm	50	80	50	80	50	80
Speed changing	S.P.M	20-150	20-100	20-100	20-80	20-100	20-80
Die height	mm	210		210		210	
Slide adjustment	mm	30		30		30	
Slide area	mm	450*250		450*250		500*250	
Bolster area	mm	600*300		600*300		650*300	
Main Motor	Kw	5.5		7.5		11	
Slide adjust device	/	Manual operation					
Method of peration	/	Hand operated					
Actuating mode	/	Inch/A Stroke/Continuous					
Air pressure	Mpa	0.5		0.5		0.5	

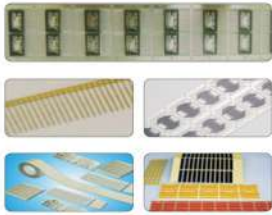
# JDC SERIES

JDC series high speed  
precision punch small press

## 05T~25Tons

- High-precision small punch bed JDC series, using imported high-precision bearings, pneumatic dry clutch, high-precision, high-security equipped with programmable controller PLC and human-machine interface, can diagnose and display abnormal conditions.

Widely used in the stamping of precision hardware pieces, secondary stamping assembly, not only fast, stable accuracy, but also on the table production, assembly automatic line production.



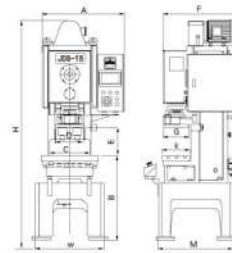
### Standard configuration

- > Manual slider adjustment device
- > Electric grease oil lubrication device
- > Slide & mold balancer
- > Dry clutch
- > Manual slider locking device
- > Electronic crankshaft angle indicator
- > Digital die height indicator(0.01 MM)
- > stroke counter(6 digits)
- > Programmable counter PLC
- > Man-Machine interface
- > Teco Motor + Teda inverter
- > Main motor forward/reverse device
- > Air source connector
- > Misfeed detection device
- > Suspended electrical box
- > Isolator mount device

### Optional configuration

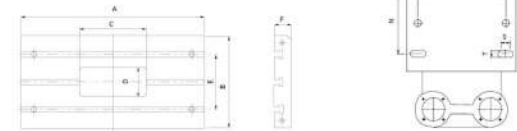
- > Photoelectric protection device
- > LED die light
- > Automatic slider locking device
- > Air ejector
- > Integrated servo feed machine
- > Pneumatic anti-vibration pads
- > decelerator + leveler

### Overall dimension



	JDC-05	JDC-10	JDC-15	JDC-25
A	670	720	790	830
B	705	760	800	800
C	340	550	600	600
D	250	250	300	300
E	205	205	205	215
F	630	750	770	850
G	220	230	240	240
H	1850	1941	2030	2196
K	250	250	300	300
M	660	660	800	800

### Bolster area



	A	B	C	D	E	F	G	H	N	M	S	T
JDC-05	340	250	160	80	150	40	250	220	140	200	20	14
JDC-10	550	250	160	80	150	45	250	230	140	200	20	14
JDC-15	600	300	200	100	200	50	300	240	140	250	20	18
JDC-25	600	300	200	100	200	65	300	240	140	250	20	18

### Technical parameters

		JDC-05		JDC-10		JDC-15		JDC-25	
Capacity	Ton	5		10		15		25	
Stroke	mm	30	50	30	50	30	50	30	50
Speed changing	S.P.M	150-420	150-350	150-420	150-350	150-400	150-300	150-400	150-300
Die height	mm	205	195	205	195	205	195	215	205
Slide adjustment	mm	30		30		30		30	
Slide area	mm	250*220		250*230		300*240		300*240	
Bolster area	mm	340*250		550*250		600*300		600*300	
Main Motor	Kw	1.1		1.5		2.5		3.7	
Slide adjust device	/	Manual operation							
Method of peration	/	Hand operated							
Actuating mode	/	Inch/A Stroke/Continuous							
Air pressure	Mpa	0.5		0.5		0.5		0.5	

All specifications, dimensions and design characteristics shown in this catalogue are subject to change without notice.

# JDA SERIES

JDA series servo precision  
small press

05T~15Tons

○ Silence, intelligence, precision, and safety are the outstanding features of JDA series special automatic punching machines and high-performance servo control systems.

○ It is equipped with programmable controller PLC and human-computer interface to diagnose and display abnormal conditions.

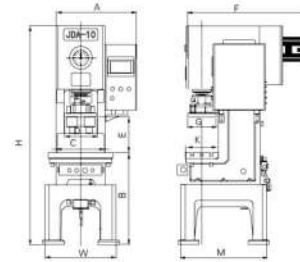


All specifications, dimensions and design characteristics shown in this catalogue are subject to change without notice.

## Performance feature

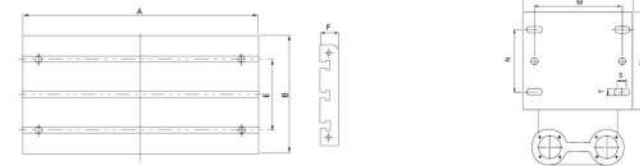
- It is widely used in printing flexible circuit boards, FPCs, printed PVC panels, printing plates, metal thin film switches, automatic production requirements for sheet and coil materials, and CCD visual detection to achieve truly noiseless, accurate, low-cost, and efficient production requirements. The connection should be automatic and meet the standards of unmanned production plants.

## Overall dimension



	JDA-05	JDA-10	JDA-15
A	575	610	650
B	705	760	800
C	340	550	600
D	250	250	300
E	195	195	195
F	810	962	1120
G	220	220	240
H	1565	1667	1796
K	250	250	300
M	610	660	800
W	498	550	660

## Bolster area



	A	B	E	F	G	H	N	M	S	T
JDA-05	340	250	150	40	250	220	140	200	20	14
JDA-10	550	250	150	45	250	220	140	200	20	14
JDA-15	600	300	200	50	300	240	140	250	20	18

## Technical parameters

		JDA-05		JDA-10		JDA-15	
Capacity	Ton	5		10		15	
Stroke	mm	50	80	50	80	50	80
Speed changing	S.P.M	20-150	20-100	20-150	20-100	20-120	20-80
Die height	mm	195	180	195	180	195	180
Slide adjustment	mm	30		30		30	
Slide area	mm	250*220		250*220		300*240	
Bolster area	mm	340*250		550*250		600*300	
Main Motor	Kw	3		5.5		7.5	
Slide adjust device	/	Manual operation					
Method of operation	/	Hand operated					
Actuating mode	/	Inch/A Stroke/Continuous					
Air pressure	Mpa	0.5		0.5		0.5	

# JDM SERIES

JDM series desktop small punch

0.5T~03Tons



## Technical parameters

		JMD-0.5	JMD-01	JMD-02	JMD-03
Capacity	Ton	0.5	1	2	3
Stroke	mm	26	40	40	42
Speed changing	S.P.M	260	250	220	200
Die height	mm	115	150	160	250
Distance between columns	mm	100	106	120	30
Depth of throat	mm	51	58	65	65
Die shank hole	mm	Φ 16*40	Φ 20*40	Φ 20*45	Φ 20*40
Bolster area	mm	252*252	270*270	320*300	350*370
Slide plate	mm	50*42	54*48	65*56	78*78
Main motor	w	250	370	450	650
Overall dimensions	mm	460*302*460	480*320*540	530*420*615	720*570*900

## Equipment Core Parts and Processing



Guide Column



High performance crankshaft

The above parts are made of forgings, tempered heat treatment, Chrome plating on the surface after finishing, and grinding and polishing.



Special servo motor for punching machine industry



Servo control system

According to decades of experience in the punching industry, combined with the requirements of European, American and Japanese servo punching machines, a specially customized servo motor and control system are adopted. Ensure safe and effective, long term meet the needs of the production of punch products.



High-performance brake mechanism



Import solenoid valve

Adopt Italian Uyl high performance clutch brake mechanism, cooperate with US MAC electromagnetic valve, ensure safe and stable operation.

All specifications, dimensions and design characteristics shown in this catalogue are subject to change without notice.



# JDH SERIES

JDH series closed high  
precision punch

05T~15Tons

- Imported high precision bearings, as well as pneumatic dry clutch, high precision and high safety.
- It is equipped with programmable controller PLC and human-computer interface to diagnose and display abnormal conditions.



## Performance feature

- High-precision small punching machines JDC, JDJ, series, widely used in the stamping of precision hardware pieces, secondary stamping assembly, not only fast, stable accuracy, but also can be produced on the table, assembly automatic line production. Efficient production needs. The connection should be automatic and meet the standards of unmanned production plants.

## Technical parameters

		JDH-05		JDH-10		JDH-15	
Capacity	Ton	5		10		15	
Stroke	mm	50	80	50	80	50	80
Speed changing	S.P.M	200-800	200-500	200-800	200-500	200-800	200-500
Die height	mm	195	185	205	195	205	195
Slide adjustment	mm	30		30		35	
Slide area	mm	250*220		300*250		350*300	
Booster area	mm	400*300		450*350		500*400	
Main Motor	Kw	1.1		1.5		2.2	
Slide adjust device	/	Manual operation					
Method of operation	/	Deuble hand operated					
Warking mode	/	Inch/Safety-Stroke/Continuous					
Air pressure	Mpa	0.5		0.5		0.5	

All specifications, dimensions and design characteristics shown in this catalogue are subject to change without notice.

# FPC SERIES

FPC electronic thin film switch punching special manipulator



- The combined design of punch bed and manipulator has strong stability and high precision.
- The FPC electronic film switch industry has been inspected for more than ten years, with wide coverage and strong compatibility.
- Double arm, high efficiency, manual material change, easy and simple. And .
- The overall design, small area, no noise, fully meet the industrial automation production requirements.

## Technical parameters

Applicable product size	min 60x60 max400x300
Speed	25 strokes per minute
Applicable Material	FPC, mulching membrane, electromagnetic membrane, PI reinforcement
Feeding accuracy	0.05mm

All specifications, dimensions and design characteristics shown in this catalogue are subject to change without notice.

# NC SERIES

NC servo precision feeder

- Using Japanese precision servo motor drive(Mitsubishi), human-machine interface, simple operation.
- The fuselage adopts HT300 high-strength castings, annealing treatment eliminates internal stress, and guarantees stability.
- Grinding after roller plating, high precision and high durability.
- This machine can fully meet the requirements of high speed operation and reduce transmission distortion in the integrated design of punch bed.



## Technical parameters

model		NCF-60		NCF-150
Material width	mm	0-60		0-150
Material thickness	mm	0-1.0		0-1.0
Maximum feed length	mm		By seting	
Feed speed	( m/min )		20	
Servo motor		400W		750w
Power voltage			Single phase 220V	
Feed Line Height		70-170		70-170
Relaxing device			Mechanical	

# STD SERIES

Straight column Double Crankshaft  
powerful Press Machine

300T~1250Tons

- Octahedral guiding of slider and long guide rail can guarantee operation precision;
- Hydraulic overload protection device and overload automatic emergency cut-off can protect safety of press machines and moulds, with convenient application;



All specifications, dimensions and design characteristics shown in this catalogue are subject to change without notice.

## Performance feature

- PLC electric interlocking control possesses sudden-stop, inch, single-pass, and continuous operation specifications;
- Dry pneumatic friction clutch is small in noise, large in clutching torque, small in braking angle, and convenient in maintenance;
- Body is closed structure, including beams, stand columns, and bases, which is strained with four tie bolts, with good rigidity (400-1200)

## Standard configuration

- > Hydraulic overload protector
- > Electric slider adjusting device
- > Independence electrical control cabinet
- > Movable operation platform
- > Digital die height indicator (unit: 0.1 mm)
- > Circulation type lubrication device
- > Power socket
- > Over-run safety device
- > Misfeed detection consent
- > Pre-determined counter (6 digits)
- > Air-blast device 1/2" one circuit
- > Air source connector 1/2" two circuit
- > Inverter

## Optional configuration

- > Die cushion
- > Photo-electric safety device
- > Slide knock-out device
- > Safety block and safety latch
- > Anti-vibration pads
- > Die lamp
- > Quick die change device
- > Moving bolster
- > Automatic feeding system

## Technical parameters

Name		STD-200		STD-400		STD-500		STD-600		STD-800		STD-1000	
Model		S	H	S	H	S	H	S	H	S	H	S	H
Capacity	ton	300		400		500		600		800		1000	
Rated tonnage point	mm	9	7	13	7	13	7	13	9	13	9	13	9
Stroke	mm	350	250	400	300	400	300	400	300	400	300	400	300
Speed changing	s.p.m	20-30	30-50	15-25	35-40	15-25	25-40	15-25	20-30	15-25	20-30	15-25	20-30
Max.die height	mm	600	650	600	650	650	700	650	700	700	750	1000	1050
Slide adjustment	mm	150		150		200		200		250		250	
Slide area	mm	2500×1300		2800×1300		3100×1400		3600×1400		3800×1600		4600×1800	
Bolster area	mm	2500×1300		2800×1400		3100×1500		3600×1500		3800×1600		4600×1800	
Side opening	mm	700×500		850×600		950×650		1000×700		1100×800		1200×900	
Die cushion capacity	ton	30		60		70		80		80		80	

# S2 SERIES

Straight Column Type Double-Point Press Machine

400T~1600Tons

- base column crossbeam and slide all use steel structure. Tighten together with tension bolts
- The transmission adopts three - stage transmission, one stage belt drive, two - stage gear transmission. High speed stage double helical gear
- The connecting rod is connected with the slide block by the guide pillar guide sleeve structure, Eight extra long guide rail.



All specifications, dimensions and design characteristics shown in this catalogue are subject to change without notice.

## Performance feature

- The clutch brake adopts a low inertia pneumatic clutch brake, which is controlled by a double safety valve.
- The hydraulic pressure overload protection device is adopted for the slide block.
- The height of the mold is adjusted by the digital display
- The method of thin oil circulating lubrication and concentrated oil clearance lubrication. With high and low level detection, high pressure detection, timing, fixed-point, quantitative lubrication.
- Hydraulic, pneumatic, electrical control components using high-quality brand-name products
- Electrical use PLC dual loop control
- With oil pressure, oil level, fault detection, a variety of action chains.
- Finite element analysis of key components.
- Optional before or after the moving side of the bolster, air cushion, special vibration isolator, quick die changing device, photoelectric protection device, rigid material and so on.

## Standard configuration

- |  |  |  |
|--|--|--|
| <ul style="list-style-type: none"> <li>&gt; Hydraulic overload protection device</li> <li>&gt; Automatic lubricating device</li> <li>&gt; Electric slide adjusting device</li> <li>&gt; Electric die height indicator</li> <li>&gt; Slide and die balancing device</li> <li>&gt; Electronic cam control display</li> <li>&gt; I read from the brake performance monitoring device</li> <li>&gt; Static SPM display function</li> </ul> | <ul style="list-style-type: none"> <li>&gt; I repair instructions function</li> <li>&gt; Air source plug base</li> <li>&gt; Air blowing device</li> <li>&gt; Over run protection device</li> <li>&gt; The frequency control motor</li> <li>&gt; Misfeed detecting device</li> <li>&gt; Moster fed-rev device</li> <li>&gt; Stroke counter</li> </ul> | <ul style="list-style-type: none"> <li>&gt; Pre cut counter</li> <li>&gt; Preset counter</li> <li>&gt; Power socket</li> <li>&gt; Independent control box</li> <li>&gt; Type operating platform</li> <li>&gt; Base plate and the bolt</li> <li>&gt; Maintenance tool box</li> <li>&gt; Operation manual</li> </ul> |
|--|--|--|

## Optional configuration

- |  |  |  |
|--|--|--|
| <ul style="list-style-type: none"> <li>&gt; Pneumatic die cushion</li> <li>&gt; Photoelectric safety device</li> <li>&gt; Slide knock-out device</li> <li>&gt; Die lamp</li> </ul> | <ul style="list-style-type: none"> <li>&gt; B.D.C.Detector</li> <li>&gt; When the fact snictd</li> <li>&gt; Flywheel brake device</li> <li>&gt; Safety block bolt</li> </ul> | <ul style="list-style-type: none"> <li>&gt; Moving bolster</li> <li>&gt; Quick die change system</li> <li>&gt; Automatic feeding system</li> <li>&gt; Anti-vibration pads</li> </ul> |
|--|--|--|

## Technical parameters

Item		S2-400	S2-500	S2-630	S2-800	S2-1000	S2-1250	S2-1600
Nominal pressrue	kN	4000	5000	6300	8000	10000	1250	16000
Nominal pressrue stroke	mm	13	13	13	13	13	13	13
Slide stroke	mm	400	500	500	500	600	600	600
NO. of strokes per minute	s.p.m	12-18	10-16	10-16	10-16	10-16	10-16	10-16
Max.die height	mm	800	800	1000	1000	1100	1100	1100
Die height adjustment	mm	350	350	500	500	500	600	600
Distance between slide rails	mm	2870	3160	3670	4060	4070	4080	4580
Bolster dimension	mm	1600	1600	1600	1800	1800	1800	1800
	mm	2800	3000	3600	4000	4000	4500	4500
	mm	180	220	220	250	280	300	340
Slide dimension	mm	1600	1600	1600	1800	1800	1800	1800
	mm	2800	3000	3600	4000	4000	4500	4500
Air cushion	kN	600	800	1000	1250	1250	1500	1500
	pc							
	mm	200	220	240	250	250	250	250
Knocking out of Slide								
	mm	150	150	150	150	150	150	150
Moving methods of bolster		-	-	-				
Main motor power	kW	75	75	90	132	132	160	220
Overall dimension	mm	4350	4900	4080	6870	7290	7500	8450
	mm	5180	5770	5420	5530	5600	6000	6320
	mm	6980	7900	7980	8860	9600	10600	11000

# S4 SERIES

Straight-side four point press

630T~1600Tons

- base column crossbeam and slide all use steel structure. Tighten together with tension bolts
- The transmission adopts three - stage transmission, one stage belt drive, two - stage gear transmission. High speed stage double helical gear
- The connecting rod is connected with the slide block by the guide pillar guide sleeve structure, Eight extra long guide rail.



All specifications, dimensions and design characteristics shown in this catalogue are subject to change without notice.

## Performance feature

- The clutch brake adopts a low inertia pneumatic clutch brake, which is controlled by a double safety valve.
- The hydraulic pressure overload protection device is adopted for the slide block.
- The height of the mold is adjusted by the digital display
- Hydraulic, pneumatic, electrical control components using high-quality brand-name products
- Electrical use PLC dual loop control
- With oil pressure, oil level, fault detection, a variety of action chains.
- Finite element analysis of key components.
- Optional before or after the moving side of the bolster, air cushion, special vibration isolator, quick die changing device, photoelectric protection device, rigid material and so on.
- The method of thin oil circulating lubrication and concentrated oil clearance lubrication. With high and low level detection, high pressure detection, timing, fixed-point, quantitative lubrication.

## Standard configuration

- > Hydraulic overload protection device
- > Electric automatic lubricating device
- > Electric slide adjusting device
- > Electric die height indicator
- > I slide and die balancing device
- > Electronic cam control display
- > Read from the brake performance monitoring device
- > Static SPM display function
- > Repair instructions function
- > The air source socket
- > Air blowing device
- > Two degree drop protection device
- > The frequency control motor
- > Detecting device
- > Main motor reversal device
- > Electronic trip counter
- > Pre cut counter
- > Preset counter
- > Power socket
- > Independent control box
- > Operating platform
- > Base plate and the bolt
- > Maintenance tool box
- > Operating instructions

## Optional configuration

- > Pneumatic die cushion lifting device
- > A photoelectric safety device
- > Knock-out device
- > I die lighting device
- > I know death under inspection
- > The pedal operation switch
- > Flywheel brake device
- > Safety block bolt
- > Moving table
- > lift the mold, clamps the mold or die arm
- > Automatic feeding system
- > Isolation mounts

## Technical parameters

Item		S4-630	S4-800	S4-1000	S4-1250	S4-1600
Nominal pressure	kN	6300	8000	10000	12500	16000
Nominal pressure stroke	mm	13	13	13	13	13
Slide stroke	mm	700	700	700	700	700
No of strokes per minute	s.p.m	10-16	10-16	10-16	10-16	10-16
Max. die height	mm	1100	1100	1200	1200	1200
Die height adjustment	mm	500	500	600	600	600
Distance between slide rails	mm	4090	4120	4210	4610	4610
Bolster dimension	mm	2000	2000	2200	2200	2200
	mm	4000	4000	4000	4500	4500
Slide dimension	mm	2000	2000	2200	2200	2200
	mm	4000	4000	4000	4500	4500
Air cushion	kN	1000	1500	1500	2000	2000
	pc					
	mm	0-200	0-250	0-250	0-250	0-250
Moving methods of bolster						
Main motor power	kW	90	110	132	160	220
Height above ground	mm	8920	9500	9600	10600	11000