



CONTACT US

"Schedule a Visit, Claim Your Haven."

CORPORATE OFFICE - KRA Infra, AK-2 Shalimar Bagh,
New Delhi - 110088

SITE ADDRESS: Survey no. 198/4-A, 198/4-B,
Anjuna - Goa

Phone: +91 7838908138 | +91 9774040111

Email: kra@krainfra.com

Website: www.krainfra.com

[Click Here for Site Location](#)

Disclaimer: This brochure is for informational purposes only and does not constitute an offer or contract. All images, plans, and details are subject to change without notice. Dimensions are approximate, and furnishings shown are for representation only. Buyers should verify all details independently. The developer is not liable for any reliance on this information.

MAPLE

ANJUNA, GOA



"Where Opulence Meets Ocean Breeze
Welcome to
Maple, Anjuna."









Unwind in Style at Maple

The Jewel of Anjuna.

NEARBY

Locations & Amenities

RESTAURANTS

- Izumi
- Second House
- Bawri
- Gunpowder
- Jamun
- Burger Factory

BEACHES

- Anjuna Beach
- Vagator Beach
- Orzan Beach

SUNDOWNERS

- Thalassa
- Purple Martini
- Titlie Culinary Bar
- Raeeth
- Mayan Beach Club
- Noah Goa

ATTRACTIONS

- Sunburn
- Chapora Fort
- St. Michael Church

CAFES

- Baba Au Rhum
- Artjuna
- Babka Goa
- Eva Cafe
- Cafe Cotinga
- Cream Choc

HOTELS & STAYS

- JW Marriot
- Westin
- W Goa

LOCATION PLAN



Arabian Sea



DISCLAIMER:
Please be advised that the depictions presented in this presentation are the artist's impression and are subject to change at any time. The developer holds the right to make any changes to the project or any detail for improvement purposes. It is important to note that changes in government rules and regulations will apply to all those who purchase the project. The furnishings shown in the interior images are not part of the offerings. Please note that this brochure is conceptual and is meant solely for advertisement purposes only. It should not be considered as a part of a legal document..

Experience Prestige and Serenity
at Anjuna's Premier Address.

MAPLE

Where Luxury Finds Its
Rhythm

Nestled within the soulful rhythm of Anjuna, Goa, Maple is more than just a residence-it is a harmonious blend of tranquility and vibrance, where luxury finds its true purpose. Here, life unfolds effortlessly, balancing the serenity of home with the exhilaration of exploration. Every corner whispers a story of elegance, while the seamless fusion of comfort and commerce transforms daily living into an experience, not just a routine. At Maple, existence is not merely about dwelling—it is about thriving amidst the ever-evolving dance of stillness and movement, rest and discovery.

MAPLE

MAPLE

DIWA HOMES | KRA

MAPLE

DIWA HOMES | KRA





"An architectural marvel,
curving its way into
timeless beauty."





"The heart of your home,
where style and serenity
come together."





"A sanctuary of comfort and style, where every sunrise feels like a dream."

"Designed for serenity,
crafted for luxury—
your perfect retreat awaits."



MAPLE

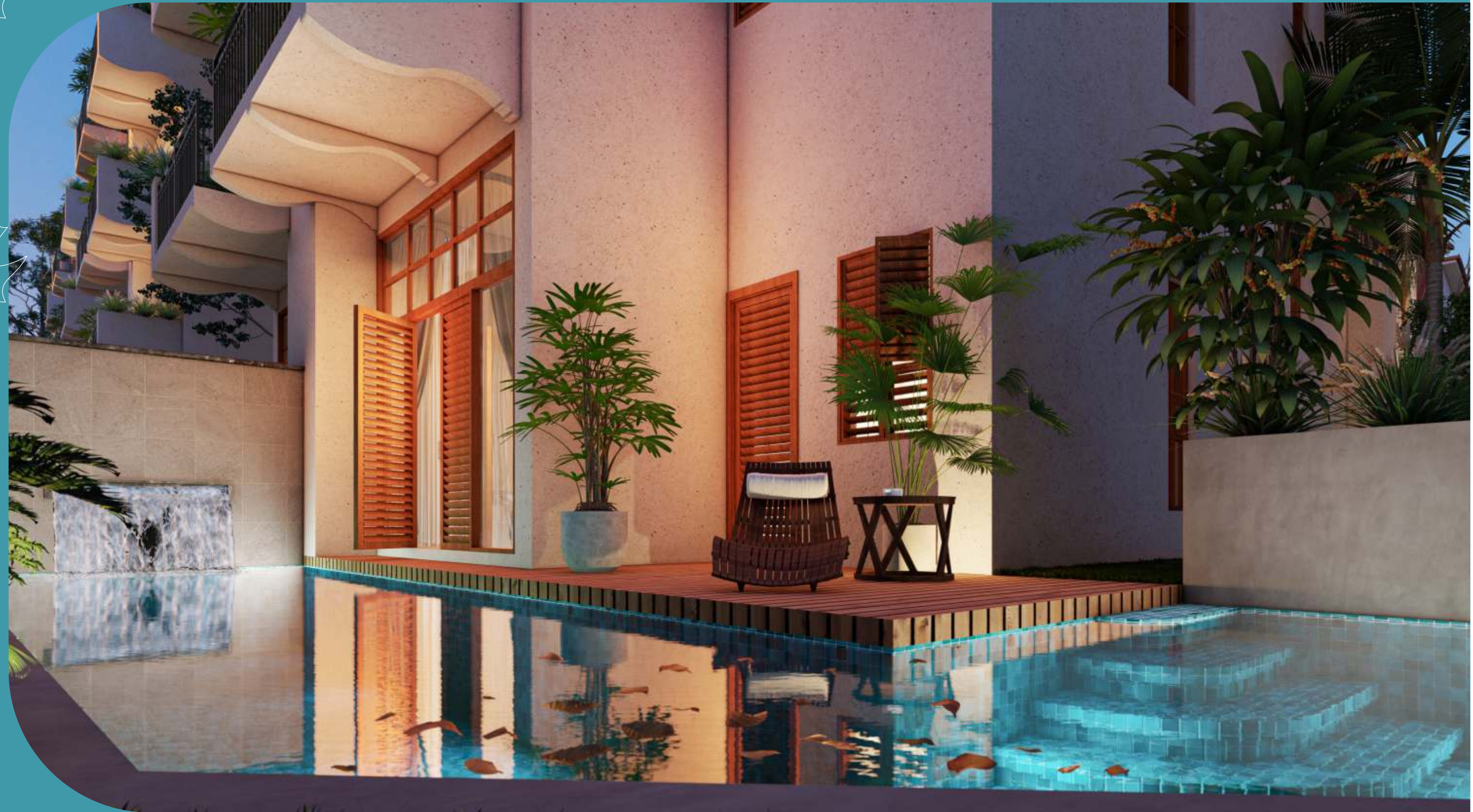


"A tranquil escape,
thoughtfully designed for
rest and rejuvenation."

DIWA
HOMES

KRA

"Where the
Water Glows
and
Luxury Flows!"





All Our Fittings & Appliances Are From Top International Brands, And Industry Leaders. The Following Mentioned Brands Are Subject To Change To Brands Of Equivalent Renown & Quality.



EXTERIOR

PAVERS/COBBLE STONES FOR OUTDOOR AREA
EXTERNAL PAINT IN IPS FINISH
LANDSCAPING WITH PLANTERS
LATERITE BRICK BOUNDARY WALLS



BATHROOMS

KOHLER/GROHE FITTINGS
DESIGNER TILES AND EQUIVALENT
SHOWER ENCLOSURE
LOOKING MIRROR
HAVELLS WATER HEATER OR EQUIVALENT



ELECTRICAL

DAIKIN OR EQUIVALENT AIRCONDITIONERS
HAVELLS/POLYCAB/SCHNEIDER ELECTRICAL
HAVELLS/SCHNEIDER SWITCHES



ROOMS

VETRIFIED AND DESIGNER TILES
LIGHT FIXTURES
WARDROBES



KITCHEN

MODULAR KITCHEN
IFB/KAFF HOBBS AND CHIMNEY
MODULAR SINKS



DOORS/WINDOWS/STAIRCASE

VITRIFIED AND DESIGNER TILES
MAIN DOOR IN TEAK WOOD WINDOWS IN
UPVC OR ALUMINIUM SLIDING DOORS IN UPVC OR
ALUMINIUM STAIRCASE RAILING IN SOLID WOOD OR STEEL



STRUCTURE

WATERPROOFING OVER CONCRETE ROOF
EXTERNAL BLOCKS IN BRICK WORK
INTERNAL WALLS IN BRICK WORK
HIGH PLINTH LEVEL WITH DAMP PROOFING BELOW GROUND FLOOR

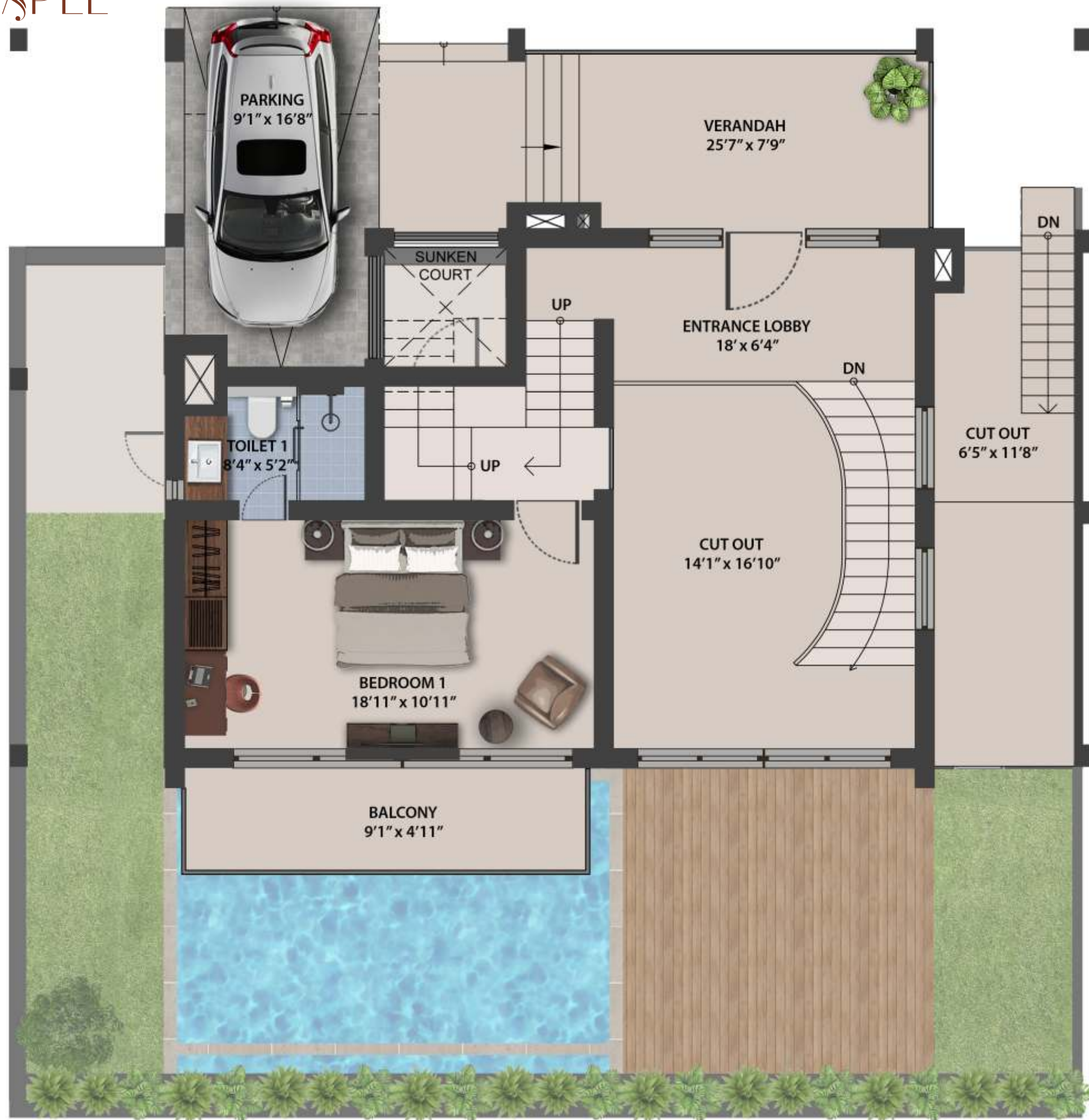
Site Plan



Type A
5 BHK VILLA

Lower Ground
Floor Plan





Type A
5 BHK VILLA

Upper Ground
Floor Plan

Type A
5 BHK VILLA

First Floor Plan





Type A
5 BHK VILLA

Second
Floor Plan

Type B
4 BHK VILLA



Lower Ground Floor Plan

Type B
4 BHK VILLA



Upper Ground Floor Plan

Type B
4 BHK VILLA



First Floor Plan

Type B
4 BHK VILLA



Second Floor Plan



MAPLE

Rental Management

At Maple, we are dedicated to transforming the daily rental management landscape. Our priority is to provide homeowners with unparalleled transparency and effortless access. Here's what awaits you:

Exclusive Management: *All daily rental activities for each apartment will be under our exclusive management. Homeowners are not allowed to oversee short-term rentals independently or via external agencies.*

No Blackout Days: *Experience the luxury of unrestricted rental opportunities. You can rent your property at your convenience, free from any limitations.*

Comprehensive Transparency: *Our intuitive app grants you direct access to all essential information regarding your apartment. This includes real-time insights into revenue, bookings, and detailed reports.*

Luxury Redefined

