



Greater Cleveland  
Beekeepers Association  
[www.greaterclevelandbeekeepers.com](http://www.greaterclevelandbeekeepers.com)

August 2019

---

# THE HONEYBEE TIMES

---

**Meeting is Wednesday, August 14, 2019**

Cleveland Metroparks Rocky River Nature Center  
Doors open at 6:30pm for snacks and socializing.  
Meeting begins at 7:00pm.

**Let's talk about our bees!!**

**Allyson May will lead a discussion on what we have seen so far and what is to come in our hives as we move from build up to preparation for wintering. Hope to see you there!**

**It's time for the 2019 Cuyahoga County Fair!!  
August 6<sup>th</sup> – 11<sup>th</sup> <http://www.cuyfair.com/>**

**Stop by and visit the GCBA information table in the Joyce Bee Barn.**

**If you have entered items in the apiary category at this year's fair, bring your ticket stubs to the September meeting and be put into a cash drawing.**



Inside:

Presidents Message

GCBA Happenings

Beginners Corner

Resources

Recipe of the Month

Upcoming Meetings and Events

## President's Message

As of this week we are at '1815' on the Growing Degrees Calendar for my zip code, 44111. Pretty much everything is in bloom or is already done blooming! I hope you had an opportunity to use this tool in the earlier months of summer to better understand the nutrition available to your bees and make hive management decisions as necessary.

### [OARDC Ohio Growing Degree Days Tool](#)

How are you pollen stores? If in doubt, a 2inch by 2inch piece of pollen patty in or above the brood chamber is a quick insurance policy. Small enough for the girls to guard against hive beetles and to use if they need it.

GCBA bylaws put term limits on the office of the President. 2019 will be my second and final year as President of GCBA. A current board member may be stepping up to run for this seat and that will mean that GCBA will need another member to step up for our club. I will remain on the board in the capacity of the Past President. Please, consider volunteering to serve our club and its mission to educate beekeepers and the public about honey bees, pollinators and the joy of beekeeping. It is more fun than work and a great learning experience!

Dr. Samuel Ramsey spoke at Tri-County Spring workshop this year. He is doing very important research on a very serious new threat to honey bees, the *Tropilaelaps* mite. There is a GoFundMe campaign open to ensure that Dr. Ramsey has sufficient funds to complete his planned research. You may consider making a donation. [Fight the Mite](#)

Annette

## GCBA Happenings

July picnic was a very nice time!! Weather was balmy, food was abundant and conversations about our bees were all around. Dennis and Val Eck shared information on entering items for the Cuyahoga County Fair. The club supplied four 1lb. queen line jars with lids, complimentary, to any member who wanted to enter their honey this year. We had some jars left over and will be filling them with the honey from the club hive that was extracted at the field day in May. Look for giveaways at upcoming meetings.

All left over food was donated to St. Herman's.

Cuyahoga County Fair runs August 6<sup>th</sup> thru August 11<sup>th</sup>. Stop by the GCBA information booth to see your fellow beekeepers, taste some honey or share a story. The table is located in the Joyce Bee Barn near Gate #3.

Recommendations for speakers, topics, club activities, article links, etc. are always welcome! Talk to any board member and we will see what we can do to make it happen.

*Elections* will be here before we know it. Consider stepping up to serve on the GCBA board. New ideas from new board members keeps us in touch with members needs. We are all volunteers. Extra hands are always wanted and needed for the club to accomplish its mission of education for beekeepers and the community at large. Members are always welcome to board meetings if you want to stop by.

## Beginners Corner

It's hard to believe that it is August. The bees have been very busy filling their pantries with food. The nectar flow has been plentiful but we know that this will end and there will be a period of a dearth before the fall golden rod flow we hope for.

It is important to remember that the honey the bees have put in their hives is the food that they eat during the dearth and winter. We should only take the surplus and leave enough real food/honey for them to eat. If you take too much honey you will need to supplement them with sugar water. Remember sugar water does not supply the same nutrition for the bees as real honey.

You also need to think about their pollen stores. You must check to see how much pollen they have stored in the comb. You might see them bringing pollen in at the entrance but if they do

not have enough pollen overall brood production will slow. Some beekeepers might think they do not have a queen in the hive if they are not seeing all stages of brood. Or you might think the queen is failing. Offering small pieces of pollen patties will provide this needed resource if the bees need it. If they don't want it they won't take it. Make sure to monitor this as small hive beetles like it as well.

Have you evaluated your hive for varroa? Do you have a management plan? You need to understand how varroa affects your hive and how you will manage the problem.

If you attended the beginning beekeepers' classes in 2019 you received a copy of the Honey Bee Health Coalition's guide to varroa management. This guide provides you with information on the varroa mite life cycle, how to monitor your hive and the many types of treatments/interventions. Managing varroa is much more than just randomly using a treatment method.

Well meaning beekeepers will often apply treatments at the wrong time or fail to follow the recommended application guidelines. You should be monitoring for varroa to understand what is going on in your hive.

Different locations will have different results. So what is right for one might be different for someone else. Every beekeeper needs to evaluate their hive and not just do things when others say it should be done.

This is true for other hive management activities as well like feeding and splitting. Learn to apply the information to your own hive. Regular monitoring will also help you become better and more accurate with the process.

At the August meeting we will discuss these things and more. Let's plan to talk about what is going on in our hives. Let's see how we are similar and how we are different. You have learned so much since you started keeping bees. Join us at the August meeting to talk about what we have learned this year. Looking forward to seeing you soon. I hope you are enjoying your bees as much as I am.

Allyson May

*Interesting Articles:*

[Climate Change Cachet](#)

[Propolis and bee health: the natural history and significance of resin use by honey bees](#)

[There are Queen Cells in my Hive, What shall I do](#)

**Anytime is a great time to catch up on educational materials.**

***Resources:***

Got mites? Not sure? What to do? Check out your options all in one place:

[Varroa Management Decision Tool](#)

Research based information from America's land-grant universities. This is a national bee health website.

[http://articles.extension.org/bee\\_health](http://articles.extension.org/bee_health)

DC Beekeepers Alliance created a nice hive inspection check list.

[http://www.dcbeckeepers.org/downloadable\\_files/DCBA\\_Hive\\_Inspection\\_Form.pdf](http://www.dcbeckeepers.org/downloadable_files/DCBA_Hive_Inspection_Form.pdf)

George W. Imirie Jr. was a lifelong beekeeper and founder of the Montgomery County (MD) Beekeepers Association. Over a decade or more, George wrote and published detailed articles about beekeeping which he titled "Pink Pages."

<http://pinkpages.chrisbacherconsulting.com/>

Ohio Farm Bureau, Cuyahoga County Chapter

<https://ofbf.org/counties/cuyahoga/>

Great resource Growing and sourcing milkweeds

<https://monarchwatch.org/milkweed/market/>

You may consider tagging some monarch's in 2019

<https://www.youtube.com/watch?v=SbBW3LUFZ6M&feature=youtu.be&t=5m>

Check out BeeSpotter and see how many bumble bees you can identify!

<https://beepotter.org/topics/key/>

BeeSpotter is a partnership between citizen-scientists and the professional science community designed to educate the public about pollinators by engaging them in a data collection effort of importance to the nation. It is a web-based portal at the [University of Illinois](#) for learning about honey bees and bumble bees and for contributing data to a nationwide effort to collect baseline information on population status of these insects.

Cuyahoga County Board of Health Apiary Inspection Program

<http://www.ccbh.net/beekeeping-apiary-inspection/>

Bees and Wasps of Ohio Guide

[http://wildlife.ohiodnr.gov/portals/wildlife/pdfs/publications/id\\_guides/Pub5488\\_Bees and Wasps of Ohio.pdf](http://wildlife.ohiodnr.gov/portals/wildlife/pdfs/publications/id_guides/Pub5488_Bees_and_Wasps_of_Ohio.pdf)

Thinking about planting more pollinator habitat? This may help you choose your plants.

<http://www.pollinator.org/bee-smart-app>

The Ohio State University Bee Lab has articles and webinars available, at your convenience, and is a great resource for new and experienced beekeepers.

<mailto:https://u.osu.edu/beelab/>

The Honey Bee Health Coalition has a complete guide to options for varroa treatments.

<http://honeybeehealthcoalition.org/varroa/>

University of Minnesota has a comprehensive tool for bee disease and pests.

[https://www.beelab.umn.edu/sites/beelab.umn.edu/files/2016\\_disease\\_pdf\\_version\\_s.pdf](https://www.beelab.umn.edu/sites/beelab.umn.edu/files/2016_disease_pdf_version_s.pdf)

Bee Culture Magazine's Kim and Jim Show brings current technology, science and information to beekeepers with webinars. You can watch live and submit questions in real time, or watch later from their archives. <http://www.beeculture.com/kimandjimshow/>

If you come across any educational material you would like to share with the club, please let us know!  
[gcbaeditor@gmail.com](mailto:gcbaeditor@gmail.com)

## Recipe of the Month    Berry Honey Milkshake

1 pint nonfat vanilla ice-cream or nonfat frozen yogurt  
1 basket strawberries hulled; or an assortment of berries (about 2 ½ C fruit)  
½ C nonfat milk  
¼ C honey  
4 small mint sprigs (optional)

In blender, combine all ingredients except mint; blend about 30 seconds until smooth and creamy. Serve immediately in tall, chilled glasses. Garnish with mint sprigs if desired. Makes 4 servings.

Interested in GCBA swag?





---

*HomeTown Threads of North Olmstead is the source!*  
[Order Your GCBA Swag Here](#)

\*\*\*We have a new Advertisement section in the newsletter. Any member in good standing can place an add once a quarter free of charge. See details on page 10.\*\*\*

Anytime is a great time to catch up on educational materials.

***Resources:***

Got mites? Not sure? What to do? Check out your options all in one place:

[Varroa Management Decision Tool](#)

Research based information from America's land-grant universities. This is a national bee health website.

[http://articles.extension.org/bee\\_health](http://articles.extension.org/bee_health)

DC Beekeepers Alliance created a nice hive inspection check list.

[http://www.dcbeckeepers.org/downloadable\\_files/DCBA\\_Hive\\_Inspection\\_Form.pdf](http://www.dcbeckeepers.org/downloadable_files/DCBA_Hive_Inspection_Form.pdf)



George W. Imirie Jr. was a lifelong beekeeper and founder of the Montgomery County (MD) Beekeepers Association. Over a decade or more, George wrote and published detailed articles about beekeeping which he titled "Pink Pages."

<http://pinkpages.chrisbacherconsulting.com/>

Ohio Farm Bureau, Cuyahoga County Chapter

<https://ofbf.org/counties/cuyahoga/>

Great resource Growing and sourcing milkweeds

<https://monarchwatch.org/milkweed/market/>

You may consider tagging some monarch's in 2019

<https://www.youtube.com/watch?v=SbBW3LUFZ6M&feature=youtu.be&t=5m>

Check out BeeSpotter and see how many bumble bees you can identify!

<https://beespotter.org/topics/key/>

BeeSpotter is a partnership between citizen-scientists and the professional science community designed to educate the public about pollinators by engaging them in a data collection effort of importance to the nation. It is a web-based portal at the [University of Illinois](#) for learning about honey bees and bumble bees and for contributing data to a nationwide effort to collect baseline information on population status of these insects.

Cuyahoga County Board of Health Apiary Inspection Program

<http://www.ccbh.net/beekeeping-apiary-inspection/>

Bees and Wasps of Ohio Guide

[http://wildlife.ohiodnr.gov/portals/wildlife/pdfs/publications/id\\_guides/Pub5488\\_Bees\\_and\\_Wasps\\_of\\_Ohio.pdf](http://wildlife.ohiodnr.gov/portals/wildlife/pdfs/publications/id_guides/Pub5488_Bees_and_Wasps_of_Ohio.pdf)

Thinking about planting more pollinator habitat? This may help you choose your plants.

<http://www.pollinator.org/bee-smart-app>

The Ohio State University Bee Lab has articles and webinars available, at your convenience, and is a great resource for new and experienced beekeepers.

<mailto:https://u.osu.edu/beelab/>

The Honey Bee Health Coalition has a complete guide to options for varroa treatments.  
<http://honeybeehealthcoalition.org/varroa/>

University of Minnesota has a comprehensive tool for bee disease and pests.  
[https://www.beelab.umn.edu/sites/beelab.umn.edu/files/2016\\_disease\\_pdf\\_version\\_s.pdf](https://www.beelab.umn.edu/sites/beelab.umn.edu/files/2016_disease_pdf_version_s.pdf)

Bee Culture Magazine's Kim and Jim Show brings current technology, science and information to beekeepers with webinars. You can watch live and submit questions in real time, or watch later from their archives. <http://www.beeeculture.com/kimandjimshow/>

If you come across any educational material you would like to share with the club, please let us know!  
[gcbaeditor@gmail.com](mailto:gcbaeditor@gmail.com)

### ***Interesting Articles:***

[Climate Change Cachet](#)

[Propolis and bee health: the natural history and significance of resin use by honey bees](#)

[There are Queen Cells in my Hive, What shall I do](#)

## **GCBA Meeting and Events**

### **August Membership Meeting**

August 14th

Beekeeper Allyson May, GCBA Treasurer

Where is your hive now and where does it need to be? Allyson will discuss hive health evaluation and what beekeepers may watch for to prevent late season swarms. Resources, equipment configurations, food stores and options will be discussed.

Rocky River Nature Center

6:30pm – 9:00pm

### **September Membership Meeting**

September 11th

Denzil St. Clair, Owner of Queen Right Colonies in Spencer

Rocky River Nature Center

6:30pm – 9:00pm

Overwintering Honey Bees in Northeast Ohio. Denzil will discuss all aspects of, and considerations to, over winter honey bee hives in Northeast Ohio. How to prepare, when and if to open hives, what should have been done and what you can still do to prepare.

### **October Membership Meeting**

October 9<sup>th</sup>

Description: Reading the Frames - Landi Simone is a EAS Master Beekeeper and beekeeping educator. We will review and discuss her presentation from a previous EAS conference as it relates to beekeeping in northeast Ohio.

Rocky River Nature Center

6:30pm – 9:00pm

### **November Membership Meeting**

November 13<sup>th</sup>

Jeannie Saum, Owner of Beepothecary

All you want to know about propolis. Jeannie will discuss methods of propolis collection, washing and cleaning. She will share information regarding health benefits of propolis and value added products you can make.

Rocky River Nature Center

6:30pm – 9:00pm

### **December Membership Meeting**

December 11<sup>th</sup>

Elections, Holiday Gathering

Our annual year end wrap up! Come and enjoy a meal and share stories of your hives this year. Please, bring a salad, side dish, or desert with a serving utensil to share. GCBA will provide meat and vegetarian entrée selections.

Rocky River Nature Center

6:30pm – 9:00pm

## **Other Meeting and Events**

### **Bee Culture BEETALK**

September 16, 2019 6:30pm – 9:00pm

AI Root 623 W. Liberty St Medina, OH

### **Lorain County Beekeepers Association 100<sup>th</sup> Year Anniversary Celebration**

October 5, 2019 5:00pm – 9:00pm

\*Reservation Required <https://lcba.app.rsvpify.com/>

### **Ashtabula County Beekeepers Association Annual Conference**

October 19, 2019 10:00am – 3:00pm

<https://ashtabulacountybeekeepers.org/>

## Classified Ads

Any member in good standing may place an ad for beekeeping related items for sale or trade once a quarter free of charge. This ad will not exceed 1/8<sup>th</sup> of a page in size. Additional ads will be subject to advertisement fees.

Advertisement Fee Schedule:

1/8<sup>th</sup> Page: \$5 month, 1/4<sup>th</sup> Page: \$7 month, Half Page: \$10 month, Full Page \$15

Please note: Information posted is a courtesy to GCBA Members and/or a paid advertisement for business entities. GCBA does not endorse or guarantee quality or pricing. Used foundation should not be sold and will not be advertised. Used woodenware cannot be certified free of some diseases like American Foulbrood. Be very cautious when purchasing any used woodenware products. Please, contact the individual or business for details.



# Queen Right Colonies

Beekeeping Supplies, Package Bees, Queens, & More



Experience

Knowledge



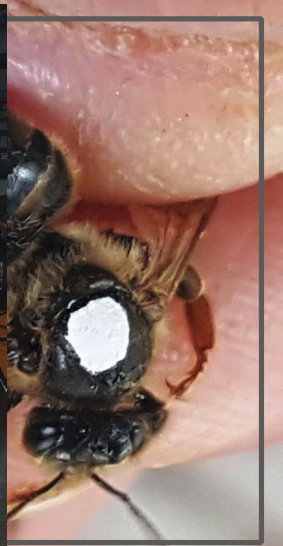
*Over 100 years combined beekeeping experience and 24 years serving the beekeeping community.*

*QRC diagnosis of your honey bee colonies. Beekeeping today requires time, observation and understanding.*



Woodenware

Queen Bees



*Ohio's finest milled and cut White Pine and Cypress wood is the beginning of the fine quality of woodenware that we proudly make available to our customers.*

*We offer New World Carniolan, Three-banded Italian, Cordovan and Saskatraz queen bees starting at \$35.*

**Stop in, call or order online today!**

## queenrightcolonies.com

43655 State Route 162 • Spencer, OH 44275  
440-647-2602 • info@queenrightcolonies.com

