



Greater Cleveland
Beekeepers Association
www.greaterclevelandbeekeepers.com

February 2020

THE HONEYBEE TIMES

February is the GCBA Beginner Beekeeper Course held each Wednesday evening at the Rocky River Nature Center
24000 Valley Parkway, North Olmsted, OH 44070

All members who have previously taken the course are welcome to attend one or all of the classes.



Inside:

Presidents Message

GCBA Happenings

Resources

Upcoming Meetings and Events

Recipe of the Month

President's Message

The ground hog didn't see his shadow but your bee's don't know it

February is here and that means Beginner Beekeeping Classes start. Everything seemed so overwhelming at first but with time everything falls into place. Try to remember your first classes and help make the newbees feel welcome.

February brings longer days and more sunlight, and warmer days can trigger the queen to start laying eggs. The cluster is working its way upward into the top of the hive, but on the colder days, they will continue to go into a tight cluster.

On a warm day, take a peek inside. Don't remove any frames as that will break the cluster and chill the brood. You should be able to tell if the colony has enough honey for food. If not you will need to feed them.

There are a few ways to do emergency feedings at this time of year. There are top feeders available, you can make fondant patties, use winter pollen patties, you can use crystallized honey between parchment paper placed on top of frames, but It's very important that you check your hives for food. This is the time you can lose your bees to starvation,

Hopefully, you've ordered your packages of bees if you need them. If not, do it as soon as possible along with ordering any new equipment needed. You'll want to have everything in place by the end of March.

There's a lot to take in! Your hard work and planning now will ensure strong hives for the upcoming season.

Phil Bartosh

Renew your GCBA membership today!

[Find and Print Membership Forms](#)

Have you lost a colony this season?

Do you know why?

This video may help you diagnose why you lost your hive.

[Why did my bees die? with Dr. Meghan Milbrath](#)

GCBA Happenings

January celebrated GCBA's 11th Anniversary. The cake was terrific.



President, Phil Bartosh has established a programming committee. This committee consists of committee Chair, Denzil St. Clair, Sheila St. Clair, Brenda Theurer, Larry Theurer and Phil Bartosh. If you have any suggestions for speakers or topics that you would like to see in the upcoming year, please talk to any member of this committee.

Our January speaker, Bill Stitt, gave a very interesting presentation about Ohio native bees and other pollinators and their roles in the ecosystem.

February brings the Beginner Beekeeper Course held each Wednesday of the month. All members are welcome to attend any or all sessions this year.

It is not too early to get the GCBA 2020 Field Day on your calendar! Plan now to attend. May 16, 2020

Did you get some of the milkweed seeds donated last fall? Are you getting ready to plant them? A convenient resource for planning and success. [Guide to Monarch Habitat Gardens](#)

Our lending library is open before each meeting with resources for any member to borrow. If you have any gently used beekeeping or pollinator plant books you would like to donate talk to one of our librarians. If you have any ideas for additions to the selection, please let any librarian know.



GCBA in the Community

What could be more fun than learning about bees on a cold day on January 30th?

Ms. Megan Almasie and twenty-two first graders at Birch Elementary school in North Olmsted would agree that the only thing better than the presentation, the handouts, the new books for the classroom library (all about bees of course) would be the honey tasting.

Students learned all about the importance and care of the honey bee and other pollinators. They were able to examine a miniature hive, handle some basic tools and touch capped honeycomb. Most importantly they now understand that bees are our partners and need our protection so that they can continue to help us grow the food that we both need for our survival.

Thanks to Janice Maund, GCBA Beekeeper, the students are now aware of the important role that the local beekeepers training and support through local clubs such as the Greater Cleveland Beekeepers Association play as partners in pollinator awareness and protection.

February 1, 2020 was the ABCI Update Seminar. Quite a bit of research is being done to understand feral honeybee colonies and improve queen genetic stock in Pennsylvania.

<https://beekeepers-of-abci-pa.com/2020-update-seminar/>

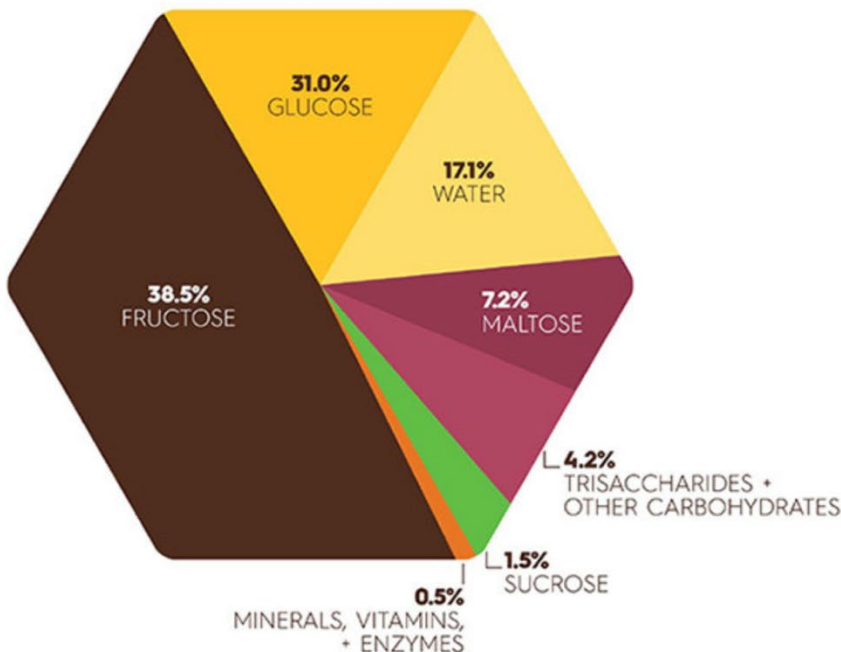
Jeff Berta of the PA Queen Improvement Project shared a big take away message; *secure your dead outs ASAP*. Do not let your other hives rob a dead out.

Research is in progress to quantify what kind and how many viruses can still be transmitted weeks after the bees die as well as how long the varroa can remain alive and attach to your bees when they rob out the honey stores in the dead colony.

This is happening, but the time lines and temperature parameters are not yet defined. Do not risk transmission!! Close up the dead hive completely. Freeze all frames for at least a week if possible. Err on the side of caution. Your healthy colonies future may depend on it.

Annette

HONEY'S NUTRITIONAL PROFILE



Nutrition Facts	
16 servings per container	
Serving size	1 Tbsp. (21g)
<hr/>	
Amount per serving	60
<hr/>	
	% Daily Value*
Total Fat 0g	0%
Saturated Fat 0g	0%
Trans Fat 0g	
Cholesterol 0mg	0%
Sodium 0mg	0%
Total Carbohydrate 17g	6%
Dietary Fiber 0g	0%
Total Sugars 17g	
	34%
Protein 0g	
<hr/>	
Vitamin D 0mcg	0%
Calcium 0mg	0%
Iron 0mg	0%
Potassium 0mg	0%
<hr/>	
<small>* The % Daily Value (DV) tells you how much a nutrient in a serving of food contributes to a daily diet. 2,000 calories a day is used for general nutrition advice.</small>	

Courtesy of the National Honey Board

All beekeepers invited to participate by marching in the seventh annual 2020 Kurentovanje Parade on Saturday, February 22nd.

You can find more information about the event <https://www.clevelandkurentovanje.com/>
and the commemorative bee pin available [Commemorative Bee Pin](#)

Package Options in Northeast Ohio

The following list is supplied for informational purposes only. GCBA does not endorse or guarantee any of the listed suppliers. It is wise to ask questions regarding origin of queens; origin and size of packages, nucs, guarantees (if any) and request to see State of Ohio certification.

Dan Kaminski 330.673.0664 or 330.671.5198 - packages, nucs

Ed Kilber 330.296.4690 – packages, 5 frame nucs

[Leibengood Family Apiaries](#) - packages, queens

[Queen Right Colonies](#) - packages, hives, queens

PAULS HONEY AND BEES - PAUL WARSTLER
2363 BATTLESBURG ST SW
EAST SPARTA, OH 44626
PHONE: 330-484-6184

HONEYBEESTARK@JUNO.COM packages, nucs, hives, queens

The **telling of the bees** is a traditional European custom in which [bees](#) would be told of important events in their keeper's lives, such as births, marriages, or departures and returns in the household.

With sorrow from Eastern Apiculture Society <http://www.easternapiculture.org/>

It is with great sadness that we are letting you know that we have lost two of our founding members. Jake Matthenius and Bob Cole. Links to their obituaries are below. We extend our condolences to their friends and family and are grateful for their many contributions to EAS and the entire beekeeping community.

<https://obits.lehighvalleylive.com/obituaries/etpa/obituary.aspx?n=jacob-c-matthenius&pid=195337712>

<https://austinandbarnesfuneralhome.com/tribute/details/2224/Willie-Cole/obituary.html#tribute-start>



Photo credit Perfect Bee

Varroa! Varroa! Varroa!
What are you doing to control your varroa? This tool may help.

"The IPM Toolbox" Webinar Series



Got an IPM question? Need to know the latest IPM information? The Northeastern IPM Center has the answers with our webinar series, "**The IPM Toolbox.**" We've asked the experts to join us online for an hour of dialogue about an effective IPM practice, method, or effort.

It can be challenging to know how to implement IPM, whether for the beginner or advanced gardener, grower, or commercial operator. The IPM Toolbox webinar series will share IPM tools that improve environmental and social health and maintain profitability.

[IPM Webinar Series](#)

Anytime is a great time to catch up on educational materials to sharpen and hone your beekeeping skills.

Small Hive Beetle Information

[ODA Small Hive Beetle Info](#)

Best Management Practices in Ohio

[ODA Beekeeping BMP](#)

Bees and Wasps of Ohio Guide

[http://wildlife.ohiodnr.gov/portals/wildlife/pdfs/publications/id_guides/Pub5488_Bees and Wasps of Ohio.pdf](http://wildlife.ohiodnr.gov/portals/wildlife/pdfs/publications/id_guides/Pub5488_Bees_and_Wasps_of_Ohio.pdf)

Beekeeping Today Podcast with Samuel Ramsey

<http://beekeepingtodaypodcast.com/dr-samuel-ramsey-the-varroa-fat-body-rediscovery>

Thinking about planting more pollinator habitat? This may help you choose your plants.

<http://www.pollinator.org/bee-smart-app>

Research based information from America's land-grant universities. This is a national bee health website.

http://articles.extension.org/bee_health

The Ohio State University Bee Lab has articles and webinars available, at your convenience, and is a great resource for new and experienced beekeepers.

<mailto:https://u.osu.edu/beelab/>

For anyone who takes pictures, shares pictures, likes to look at pictures of nature. Use it on your computer or smartphone.

<https://www.inaturalist.org/>

The Honey Bee Health Coalition has a complete guide to options for varroa treatments.

Copy of the monitoring and tracking chart located later in newsletter.

<http://honeybeehealthcoalition.org/varroa/>

University of Minnesota has a comprehensive tool for bee disease and pests.

https://www.beelab.umn.edu/sites/beelab.umn.edu/files/2016_disease_pdf_version_s.pdf

Dr. Meghan Milbrath also has a very good article to help you make a plan for varroa management posted on her site Sand Hill Bees.

https://static1.squarespace.com/static/56818659c21b86470317d96e/t/5900c9798419c2db7622e85b/1493223802902/MakingAPlanforVarroa_2017.pdf

Bee Culture Magazine's Kim and Jim Show brings current technology, science and information to beekeepers with webinars. You can watch live and submit questions in real time, or watch later from their archives. <http://www.beeeculture.com/kimandjimshow/>

If you come across any educational material you would like to share with the club, please let us know!
gcbaeditor@gmail.com

Bees and Wasps of Ohio Guide

http://wildlife.ohiodnr.gov/portals/wildlife/pdfs/publications/id_guides/Pub5488_Bees_and_Wasps_of_Ohio.pdf

GCBA Meeting and Events

February Membership Meeting

No general meeting, but all members are welcome to attend one or all of the Beginner Beekeeping Classes which are held each Wednesday evening in February 6:30-9:00pm

Rocky River Nature Center

March Membership Meeting

March 11th

Dave Noble, Apiarist at Stratford Ecological Center

Planning for Success

Create an overall plan for the year; how to use the plan for monthly and weekly task needs. How to change and adapt based on climate, weather and other conditions.

Rocky River Nature Center

6:30pm – 9:00pm

April Membership Meeting

April 8th

Allyson May, GCBA Board member

Spring is here, now what ?

Rocky River Nature Center

6:30pm – 9:00pm

Splits and swarms are important considerations in the Spring for overwintered hives and packages alike. Recognize the important signs of colony build up in your hive and learn your options for management decisions.

May Membership Meeting

May 13th

Kim Flottum, International Speaker & Bee Culture Magazine, Retired Editor

Kim will be discussing the nuances of keeping city bees and urban beekeeping.

Rocky River Nature Center

6:30pm – 9:00pm

GCBA Annual Field Day

May 16th

Cuyahoga County Fairgrounds

8:00am – 3:00pm

June Membership Meeting

May 13th

John Rose, Local Beekeeping Educator and Woodworker

Dennis Eck, GCBA Past President, CCF Board Member

John will be discussing varroa detection and the oxalic acid dribble method as a form of treatment.

Dennis will be discussing how to enter honey products in the Cuyahoga County Fair.

Rocky River Nature Center

6:30pm – 9:00pm

Other Beekeeping Meeting and Events

Tri-County Beekeepers 42nd Spring Workshop March 6th and 7th

<https://www.tricountybeekeepers.org/register>

Lorain County Beekeepers

<http://www.loraincountybeekeepers.org/home.html>

Geauga County Beekeepers

<https://sites.google.com/geaugacountybeekeepers.org/geaugacountybeekeepers/home>

Medina County Beekeepers

<https://medinabeekeepers.com/>

Recipe of the Month

Honey Cough Syrup

INGREDIENTS

zest of 2 lemons (approx. 1 1/2 T) 1/4 cup
ginger, peeled, sliced, or 1/2 tsp. of ground ginger
1 cup water
1 cup honey
1/2 cup lemon juice

DIRECTIONS

In a small saucepan, combine lemon zest, sliced ginger and 1 cup of water. Bring mixture to a boil, simmer for 5 minutes, then strain through into a heat-proof measuring cup.

Rinse the saucepan out and pour in 1 cup of honey. On low heat, warm the honey, but do not allow it to boil. Add the strained lemon ginger water and the lemon juice. Stir the mixture until it combines to form a thick syrup.

Pour into a clean jar with a lid.

Note: This can be refrigerated for up to 2 months.

For children ages 1 to 5, use 1/2 to 1 tsp. every 2 hours. For children ages 5 to 12, use 1 to 2 tsp. every 2 hours. For children 12 and older and adults, use 1 to 2 T every 4 hours.*

Or try a cold twist on this recipe with Honey Lemon Coughcicles.

INGREDIENTS

1/2 cup - Honey Cough Syrup
1 1/2 cups - water

DIRECTIONS

Mix together 1/2 cup of honey cough syrup and 1 1/2 cups of water. Pour into your favorite popsicle molds or a small plastic container to freeze.

*** Remember, honey is recommended for children after the age of one.**

Recipes courtesy of Nurse Practitioner Barbara Dehn, RN, MS, NP.

Interested in GCBA swag?



HomeTown Threads of North Olmstead is the source!
[Order Your GCBA Swag Here](#)

What is on your license plate?

Did you know you can get a "Save the Honey Bee" plate this year?



Classified Ads

Any member in good standing may place an ad for beekeeping related items for sale or trade once a quarter free of charge. This ad will not exceed 1/8th of a page in size. Additional ads will be subject to advertisement fees.

Advertisement Fee Schedule:

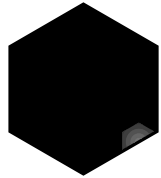
1/8th Page: \$5 month, 1/4th Page: \$7 month, Half Page: \$10 month, Full Page \$15

Please note: Information posted is a courtesy to GCBA Members and/or a paid advertisement for business entities. GCBA does not endorse or guarantee quality or pricing. Used foundation should not be sold and will not be advertised. Used woodenware cannot be certified free of some diseases like American Foulbrood. Be very cautious when purchasing any used woodenware products. Please, contact the individual or business for details.



Queen Right Colonies®

Beekeeping Supplies, Package Bees, Queens, & More



California Package Bees

**Order
Your Package
Today!**

Saskatraz Starting at
Cordova \$165
New World Carniolan
Three-Banded Italian

**3 lb. Packages
with mated Queen**

*We plan our deliveries
for the third and fourth
weeks of April.*



***QRC is one of nine Trusted
Partners of OHB for California
Premium Package Bees.***

We proudly boast of our committed partnership with Olivarez Honey Bees (OHB) to bring the best bees in the country to the east coast region of the United States.

Our Package Bees are:

- Certified Hive Beetle Free
- DNA Tested to be Africanized Gene Free
- Trademarked, Patented & Certified Saskatraz
- Breeder stock certified by Albert Robertson & Olivarez Honey Bees



queenrightcolonies.com

43655 State Route 162 • Spencer, OH 44275
440-647-2602 • info@queenrightcolonies.com