



Greater Cleveland
Beekeepers Association
www.greaterclevelandbeekeepers.com

March 2020

THE HONEYBEE TIMES

March Meeting

Dave Noble is the apiarist at [Stratford Ecological Center](#) in Delaware, Ohio. Dave began his beekeeping career at The Ohio State University Honey Bee Research Lab in the 1990's. He employs his 24+ years of beekeeping and bee breeding experience to inform his practices as well as guide his educational programs. Dave believes in a bee-centered philosophy of beekeeping; that a better understanding of bee behavior and biology creates better beekeeping practices.

Dave says that success in beekeeping comes from an ability to change your plans. This implies that you have a plan!

Dave will outline how to create an overall 'plan' for the year; how to use that plan to make monthly and even weekly plans. He will also discuss at how to change and adapt your plan based on climate, weather and other conditions.

Rocky River Nature Center

24000 Valley Parkway, North Olmsted, OH 44070

Doors open at 6:30pm

Program at 7:00pm – 8:30pm

Inside:

Presidents Message

GCBA Happenings

Resources

Upcoming Meetings and Events

Recipe of the Month

President's Message

Hello everyone

I would like to send out a big thanks for all our class presenters and a welcome to all our returning members and our new members.

The GCBA Beginner Classes are complete and the journey begins. Don't forget to order your packages(s) of bee's and thinking about your location for your hive.

March is here and it is time to be careful with your hives coming out of winter. On the warm days above 50 degrees check to see if your bees are flying. Check on your bees food, honey stores. This is the time a year your hive might starve.

Your bee's should have moved up in the hive. This is the time to feed. Using top feeders, fondant, and sugar patties are just a few ways to feed your hive.

Remember when doing any inspection at this time of year your bee's might be much more aggressive.

In a few weeks you can start feeding pollen patties to help jump start them. As the hive starts to build up you may want to check your bottom brood box if empty move it up.

Pay attention to your hive as the weather gets warmer.

Spring is in the air

Thanks

Phil Bartosh

GCBA Beginner Course 2020 instructed 57 new families! Please, welcome all the newbees to our club and offer them assistance as they begin their journey into the amazing world of beekeeping that we all love!

Renew your GCBA membership today!

[Find and Print Membership Forms](#)

Have you lost a colony this season?

Do you know why?

This video may help you diagnose why you lost your hive.

[Why did my bees die? with Dr. Meghan Milbrath](#)

GCBA Happenings

GCBA Board members met on February 19th for a special meeting called by Vice-President, Larry Kelly, to discuss vacant board seats and potential new board members. Three candidates volunteered to step up into board seats. Per GCBA By-laws, the GCBA board members assigned 3 new officers who will serve the remainder of 2020 and may choose to run for elected seats in December. Please, welcome these new officers.

Brenda Theurer, Treasurer

Sheila St. Clair, Secretary

Denzil St. Clair, Director

As always, the board welcomes volunteers for activities and projects of all kinds. Please, consider sharing your talents to keep GCBA a vibrant and active club.

Thank you to all the members who participated on the Beginner Beekeeping Course Committee. This group created 3 Powerpoint presentations. GCBA now has unique tools that may be used, reviewed and refined each year as needed. Thank you to Janice Maund, Rick Moranz, Phil Bartosh, Annette Birt Clark, Andy Kawac, Allyson May, Stephanie Sadlon, Keith Taylor and Carl Schiller for all their time and effort.

It is not too early to get the GCBA 2020 Field Day on your calendar! Plan now to attend.
May 16, 2020

Our lending library is open before each meeting with resources for any member to borrow. If you have any gently used beekeeping or pollinator plant books you would like to donate talk to one of our librarians. If you have any ideas for additions to the selection, please let any librarian know.

April is Ohio Native Plant Month!

Check out what is happening in your area

<https://www.ohionativeplantmonth.org/whats-planned>



GCBA in the Community

No activities to report this month. Classes every week kept the club busy on beekeeper education.

Special Price for Bee Culture magazine!

1 year, 12 issues, for \$12.50 if you subscribe online and use the Promo Code: Spring2020

<https://www.bee-culture.com/>

Local Beekeeping News

[Status of Beekeeping in Lakewood](#)

[Package Bee Options in Northeast Ohio](#)

The following list is supplied for informational purposes only. GCBA does not endorse or guarantee any of the listed suppliers. It is wise to ask questions regarding origin of queens; origin and size of packages, nucs, guarantees (if any) and request to see State of Ohio certification.

Dan Kaminski 330.673.0664 or 330.671.5198 - packages, nucs

Ed Kilber 330.296.4690 – packages, 5 frame nucs

[Leibengood Family Apiaries](#) - packages, queens

[Queen Right Colonies](#) - packages, hives, queens

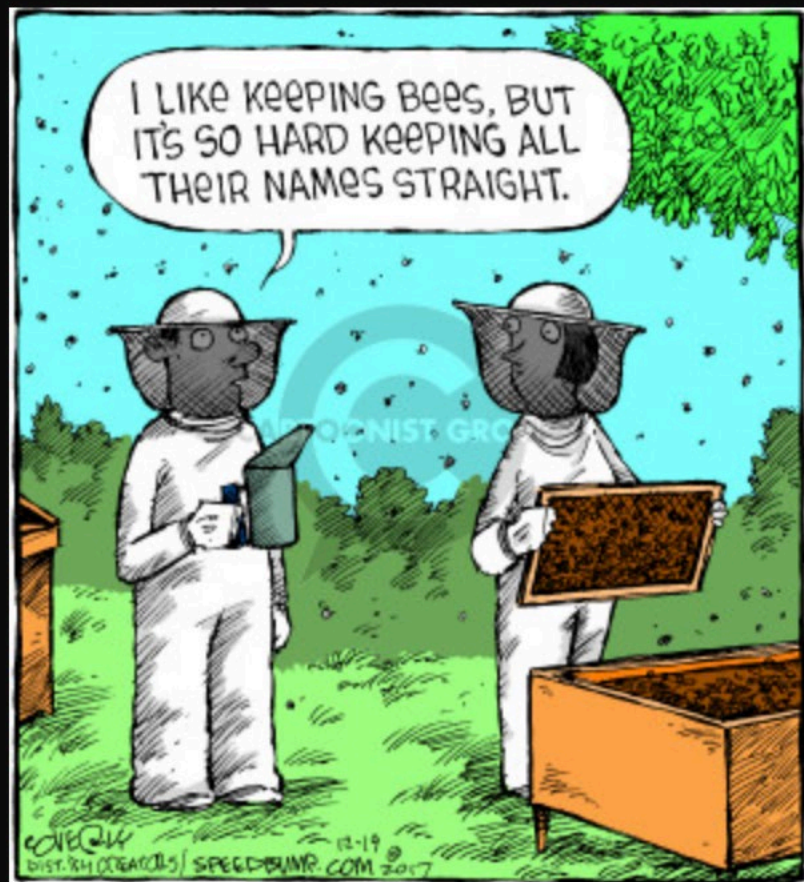
PAULS HONEY AND BEES - PAUL WARSTLER

2363 BATTLESBURG ST SW

EAST SPARTA, OH 44626

PHONE: 330-484-6184

HONEYBEESTARK@JUNO.COM packages, nucs, hives, queens



"The IPM Toolbox" Webinar Series



Got an IPM question? Need to know the latest IPM information? The Northeastern IPM Center has the answers with our webinar series, "**The IPM Toolbox.**" We've asked the experts to join us online for an hour of dialogue about an effective IPM practice, method, or effort.

It can be challenging to know how to implement IPM, whether for the beginner or advanced gardener, grower, or commercial operator. The IPM Toolbox webinar series will share IPM tools that improve environmental and social health and maintain profitability.

[IPM Webinar Series](#)

Bee Sting Therapy Anyone?

[Martha Stewart talks about Apitherapy](#)

If you get stung

[Bee Sting Guide](#)

How bees can keep the peace between elephants and humans (Lucy King | TEDWomen 2019)

https://www.ted.com/talks/lucy_king_how_bees_can_keep_the_peace_between_elephants_and_humans?utm_source=tedcomshare&utm_medium=email&utm_campaign=tedsread

Many people worked tirelessly to establish and promote the
upcoming
April 2020 inaugural “Native Plant Month“ in Ohio

<https://www.ohionativeplantmonth.org/whats-planned>

Good resource for Ohio native plants, seeds and the 2020 inaugural “native tree and shrub sale”:

<https://www.cuyahogawcd.org/blog/2020/01/13/inaugural-cuyahoga-swcd-tree-sale>

Resources To help restore gardens - for native plant seeds:

Prairie Moon (Minnesota)

<https://www.prairiemoon.com/>

Prairie Nursery (Wisconsin)

https://www.prairienursery.com/?gclid=EAlaIQobChMI2LTLkr7O5wIVA6SzCh3m4Q8IEAAYASAAEgIIP_D_BwE

Ernst Conservation Seeds

https://www.ernstseed.com/resources/faqs/?gclid=EAlaIQobChMItonkub7O5wIVBZyzCh3nggn4EAA_YASAAEgJ0pPD_BwE

Bakers Creek

<https://www.rareseeds.com/>

Anytime is a great time to catch up on educational materials to sharpen and hone your beekeeping skills.

Dr. Meghan Milbrath also has a very good article to help you make a plan for varroa management posted on her site Sand Hill Bees.

https://static1.squarespace.com/static/56818659c21b86470317d96e/t/5900c9798419c2db7622e85b/1493223802902/MakingAPlanforVarroa_2017.pdf

Small Hive Beetle Information

[ODA Small Hive Beetle Info](#)

Best Management Practices in Ohio

[ODA Beekeeping BMP](#)

Bees and Wasps of Ohio Guide

[http://wildlife.ohiodnr.gov/portals/wildlife/pdfs/publications/id_guides/Pub5488_Bees and Wasps of Ohio.pdf](http://wildlife.ohiodnr.gov/portals/wildlife/pdfs/publications/id_guides/Pub5488_Bees_and_Wasps_of_Ohio.pdf)

Beekeeping Today Podcast with Samuel Ramsey

<http://beekeepingtodaypodcast.com/dr-samuel-ramsey-the-varroa-fat-body-rediscovery>

Research based information from America's land-grant universities. This is a national bee health website.

http://articles.extension.org/bee_health

The Ohio State University Bee Lab has articles and webinars available, at your convenience, and is a great resource for new and experienced beekeepers.

<mailto:https://u.osu.edu/beelab/>

For anyone who takes pictures, shares pictures, likes to look at pictures of nature. Use it on your computer or smartphone.

<https://www.inaturalist.org/>

The Honey Bee Health Coalition has a complete guide to options for varroa treatments. Copy of the monitoring and tracking chart located later in newsletter.

<http://honeybeehealthcoalition.org/varroa/>

University of Minnesota has a comprehensive tool for bee disease and pests.

https://www.beelab.umn.edu/sites/beelab.umn.edu/files/2016_disease_pdf_version_s.pdf

Bee Culture Magazine's Kim and Jim Show brings current technology, science and information to beekeepers with webinars. You can watch live and submit questions in real time, or watch later from their archives. <http://www.beeeculture.com/kimandjimshow/>

If you come across any educational material you would like to share with the club, please let us know!
gcbaeditor@gmail.com

GCBA Meeting and Events

March Membership Meeting

March 11th

Dave Noble, Apiarist at Stratford Ecological Center
Planning for Success

Create an overall plan for the year; how to use the plan for monthly and weekly task needs. How to change and adapt based on climate, weather and other conditions.

Rocky River Nature Center

6:30pm – 9:00pm

April Membership Meeting

April 8th

Allyson May, GCBA Board member

Spring is here, now what ?

Splits and swarms are important considerations in the Spring for overwintered hives and packages alike. Recognize the important signs of colony build up in your hive and learn your options for management decisions.

Rocky River Nature Center

6:30pm – 9:00pm

May Membership Meeting

May 13th

Kim Flottum, International Speaker & Bee Culture Magazine, Retired Editor

Kim will be discussing the nuances of keeping city bees and urban beekeeping.

Rocky River Nature Center

6:30pm – 9:00pm

June Membership Meeting

May 13th

John Rose, Local Beekeeping Educator and Woodworker

Dennis Eck, GCBA Past President, CCF Board Member

John will be discussing varroa detection and the oxalic acid dribble method as a form of treatment.

Dennis will be discussing how to enter honey products in the Cuyahoga County Fair.

Rocky River Nature Center

6:30pm – 9:00pm

GCBA Annual Field Day

May 16th

Cuyahoga County Fairgrounds

8:00am – 3:00pm

Other Beekeeping Meeting and Events

Harrison County Beekeeper Seminar

May 9, 2020 - 9am – 4pm

Scio U.M. Church - 117 Maple St, Scio OH 43988

Dr. Kirsten Traynor - \$25 preregistered, lunch included, \$30 walk-in

For registration or more information <mailto:harrisonbeekeepers@gmail.com>

Portage County Beekeepers June 14, 2020 - Queen Rearing Workshop

Location: Portage Soil and Water Office (6970 State Route 88, Ravenna, Ohio 44266)

Time: 11am-4pm

Cost: \$60

Registration: <https://www.eventbrite.com/o/portage-county-beekeepers-12379470919>

Description: This is a classroom only workshop with a demo on how to graft queens. Free book is included with registration.

Lorain County Beekeepers

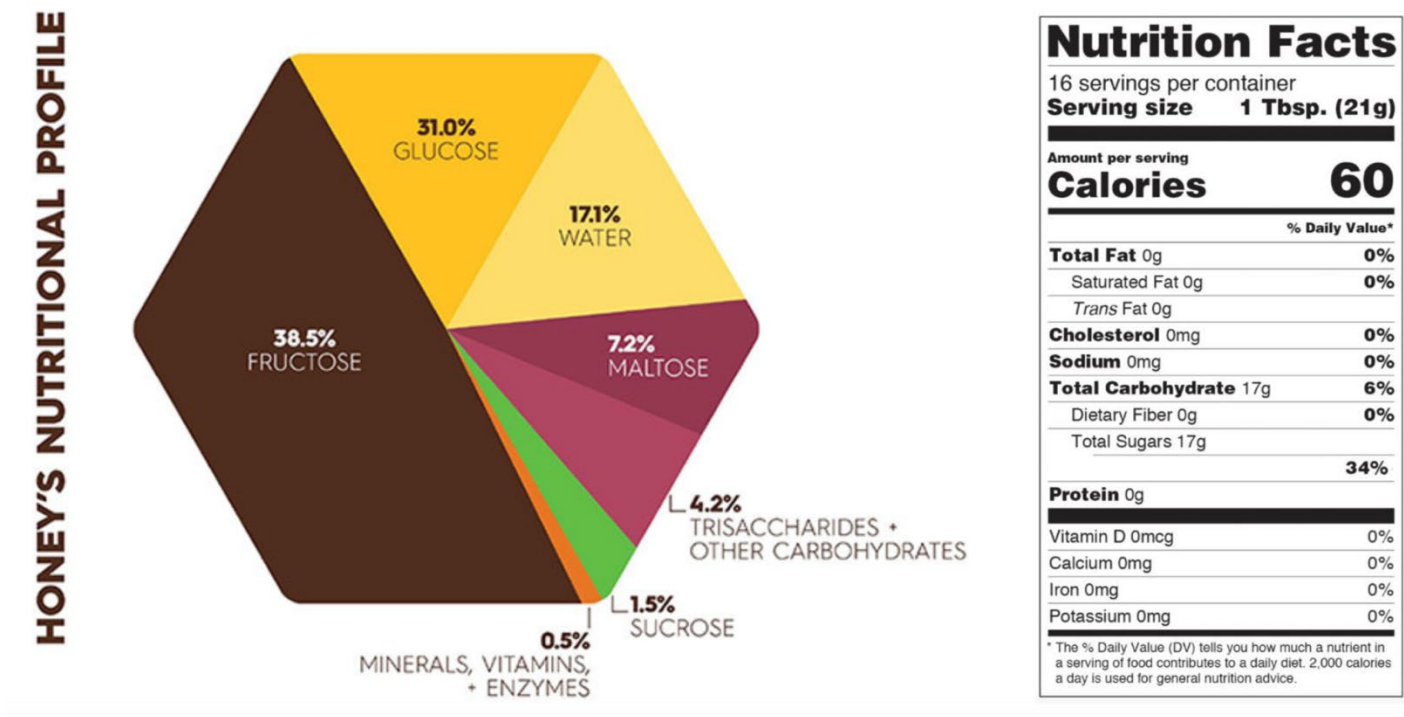
<http://www.loraincountybeekeepers.org/home.html>

Geauga County Beekeepers

<https://sites.google.com/geaugacountybeekeepers.org/geaugacountybeekeepers/home>

Medina County Beekeepers

<https://medinabeekeepers.com/>



Recipe of the Month

Honey ChoCo-Cheese Brownies

INGREDIENTS

4 oz. unsweetened chocolate

1/2 cup butter or margarine

3/4 cup sugar

1/4 cup honey

3 eggs, beaten

1 cup flour

1/2 tsp. baking powder

1/2 tsp. ground cinnamon

1/4 tsp. salt

1 tsp. vanilla

1/2 cup chopped nuts

FOR CREAM CHEESE MARBLE:

4 oz. cream cheese, softened

1 T honey

1 T sugar

DIRECTIONS

For Batter:

Melt chocolate and butter in saucepan; set aside to cool.

Combine cooled chocolate mixture, sugar, honey and eggs.

Combine flour, baking powder, cinnamon and salt. Add to chocolate mixture. Stir in vanilla and nuts.

For Cream Cheese Marble:

Combine remaining ingredients and mix until smooth.

Spread half of batter in greased 9-inch square pan; pour Cream Cheese Marble over top. Drop spoonfuls of remaining chocolate batter and swirl with Cream Cheese Marble. Bake at 350°F for 25 to 30 minutes. Cool and cut into squares.

Courtesy National Honey Board

Interested is GCBA swag?



HomeTown Threads of North Olmstead is the source!
[Order Your GCBA Swag Here](#)

What is on your license plate?
Did you know you can get a "Save the Honey Bee" plate this year?



Classified Ads

Any member in good standing may place an ad for beekeeping related items for sale or trade once a quarter free of charge. This ad will not exceed 1/8th of a page in size. Additional ads will be subject to advertisement fees.

Advertisement Fee Schedule:

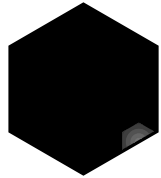
1/8th Page: \$5 month, 1/4th Page: \$7 month, Half Page: \$10 month, Full Page \$15

Please note: Information posted is a courtesy to GCBA Members and/or a paid advertisement for business entities. GCBA does not endorse or guarantee quality or pricing. Used foundation should not be sold and will not be advertised. Used woodenware cannot be certified free of some diseases like American Foulbrood. Be very cautious when purchasing any used woodenware products. Please, contact the individual or business for details.



Queen Right Colonies®

Beekeeping Supplies, Package Bees, Queens, & More



California Package Bees

**Order
Your Package
Today!**

Saskatraz Starting at
Cordova \$165
New World Carniolan
Three-Banded Italian

**3 lb. Packages
with mated Queen**

*We plan our deliveries
for the third and fourth
weeks of April.*



***QRC is one of nine Trusted
Partners of OHB for California
Premium Package Bees.***

We proudly boast of our committed partnership with Olivarez Honey Bees (OHB) to bring the best bees in the country to the east coast region of the United States.

Our Package Bees are:

- Certified Hive Beetle Free
- DNA Tested to be Africanized Gene Free
- Trademarked, Patented & Certified Saskatraz
- Breeder stock certified by Albert Robertson & Olivarez Honey Bees



queenrightcolonies.com

43655 State Route 162 • Spencer, OH 44275
440-647-2602 • info@queenrightcolonies.com