



**Greater Cleveland
Beekeepers Association**
www.greaterclevelandbeekeepers.com

November 2021

THE HONEYBEE TIMES

Hi everybody.

Well, it's that time of year again. Depending on where you live, the honey flow is over or just about to be. If like Brenda & me and live closer to the Lake, you may have a few short weeks left on the honey flow.

Make sure your hive has enough honey to make through the Winter Season. If not and you have already removed your honey supers, you can start feeding if you haven't already done so already.

If you are extracting and bottling your honey, make sure the frames to be extracted are at room temperature or a little bit warmer. This will allow the honey to release more freely from the honeycomb and flow through your filter more easily. Make sure to take the capping wax and filter that too – there is a lot of honey attached to it when you do your cutting for extraction, and you don't want to miss a single drop of it!

Make sure to keep up with your reading, especially the Beekeeping for Dummies book that we use in Classes. It is a wealth of information and even experienced beekeepers often refer to it for reference.

I hope you will all be able to join us at the November 10th Meeting to hear Dan Zikursh talk about MEAD and show us how to make some at home. Dan has done a few presentations in the past for GCBA and they are extremely entertaining and educational. For those of you who are not familiar with Dan, among other things he keeps bees, helps with bees and is a Master Brewer and Co-owner at Three Sips Brewing.

(President's Message Continued)

There are many articles available, and we will be updating them on our Facebook Page.

We will also have nominations for All Officer Positions: President, Vice President, Secretary, Treasurer and three Director positions (1-, 2- and 3-year positions). Officer and Director Duties are available in the By-Laws on the GCBA website [GCBA-ByLaws.pdf](#) ([greaterclevelandbeekeepers.com](#)). Please consider running for an office.

Once again, for the foreseeable future, we will be having all our Meetings, Classes and Executive Meetings at the Cuyahoga County Fairgrounds in Building 25. Thank you to the Cuyahoga County Agriculture Society for letting us have this space. I know that I thank them every month, but I feel that it is important that we as a Club let them know how much we appreciate their generosity allowing us a place to meet. We have a wonderful working relationship with them in addition to what we do at the Fair each year.

Next, please join us in December for the Election of Officers and for our Christmas Potluck. The Club will purchase the ham and provide coffee, bottled water and soda pop, so please bring an entrée, side dish or dessert to share. I can honestly say that GCBA has the BEST potluck going!

Next year seems to be falling in to place with Beginner Beekeeping Classes in February and our Field Day Conference in May. We have just around 100 people take an interest in learning more about taking classes next year.

Our next Executive Meeting will be on Wednesday, November 17th at 6:30pm the Fairgrounds (either Building 25 or the Bee Barn – look for the cars). All Members are welcome to attend, we like to have your input (especially if you are thinking of running for an Officer position).

Until next month,

Larry

ARTICLE IV: OFFICERS AND EXECUTIVE COMMITTEE

Section 1: Power and Authority The Executive Committee will establish policies for the GCBA and ensure the organization carries out activities to meet its purpose. Executive members shall serve voluntarily without compensation. The Executive Committee shall be the same Board of Directors within the meaning of ORC §1702. The President of the Executive Committee will be the presiding officer.

Section 2: Composition of Executive Committee The Executive Committee will consist of eight individuals, consisting of three elected directors, the four elected officers, and the immediate past president. If the current president is re-elected for a second term, the previous past president will continue to fill the position of the past president and perform the duties stated in the bylaws.

Section 3: Eligibility Each elected member of the Executive Committee must be a member of the GCBA. Should an elected member of the Executive Committee fail to pay annual dues during his or her term in a timely manner, that person will cease to serve in the office held, and the vacancy will be filled by an interim appointment by the Executive Committee until a special election can be held to fill the position.

Inside this issue:
President's Message
Inspector's Corner
GCBA Happenings
Recipes
Clothes
Ventilation
Insulation
50/50
Upcoming Meetings and Events

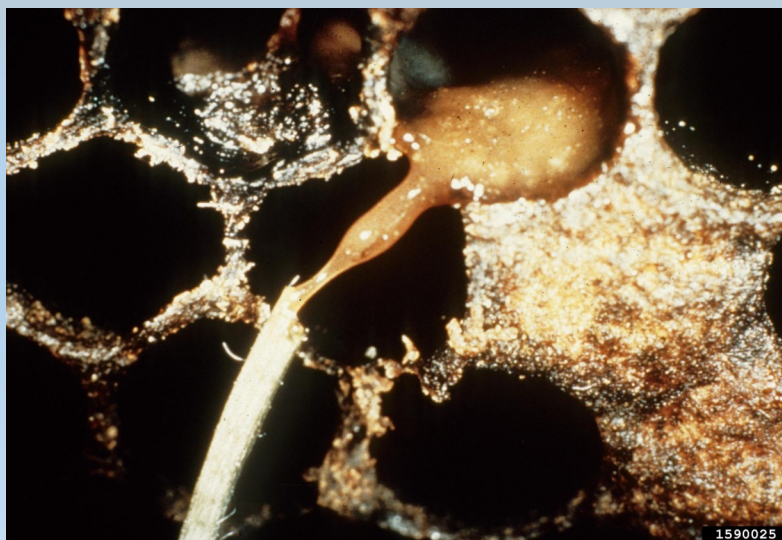
November Membership Meeting
11/10/2021
November Board Meeting
11/17/2021

Building #25
Cuyahoga County Fair Grounds

The Inspector's Corner

It's the end of the Inspection season, My Commission with the State of Ohio ends October 31st, I can still and will help if you have questions a lot of things have happened from finding and confirming American Foulbrood to finding that we need to do a better job in the education of beekeepers. Make sure you have enough stores for winter, might want to think about ventilation and insulation of the hives, maybe install mouse guards if you're in an area with mice, even tip the hives forward to help with moisture build up.

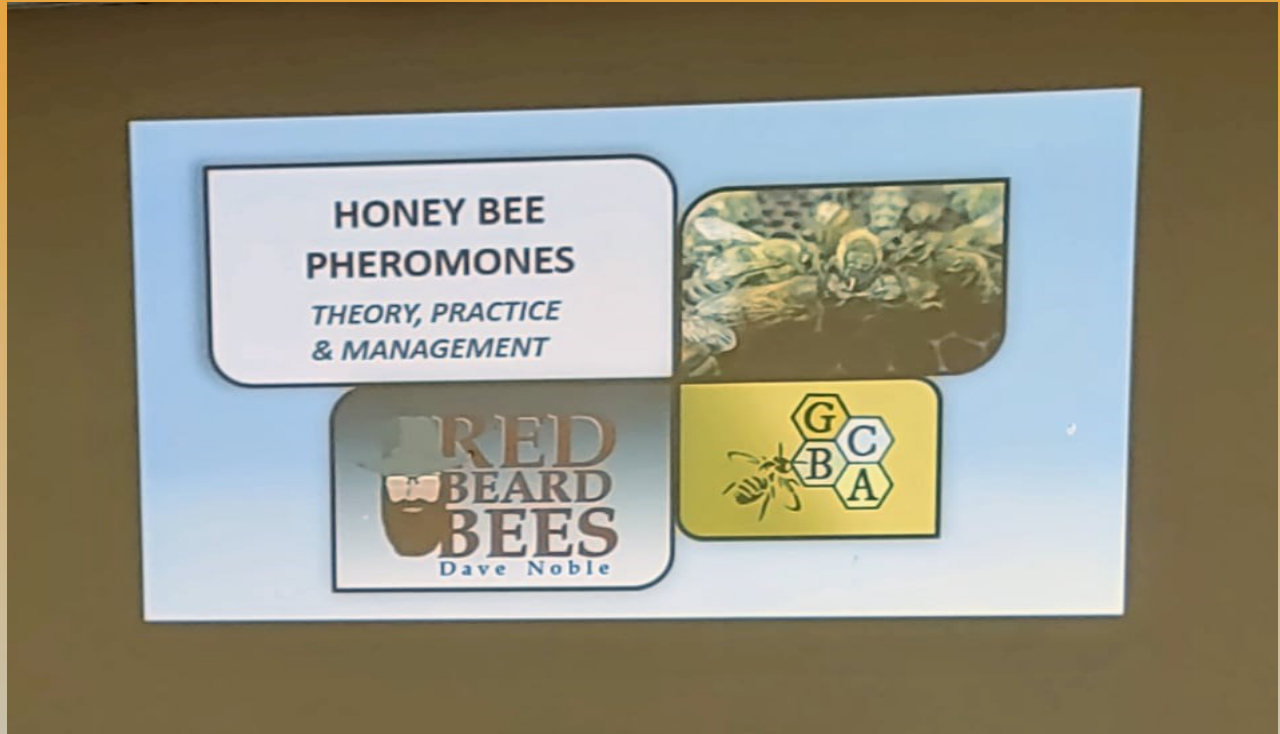
Thanks, Phil Bartosh 216.470.0934 216.351.6190
sd9990@aol.com Cuyahoga County Apiary Inspector



Greater Cleveland Beekeepers hosted an evening with Dave Noble.

Honey Bee Pheromones, a great presentation!

If you missed this event please plan to be with us in November, Topic Mead making with Dan Zikursh. Visit our website for more information.



Cold & Flu Season

Ol' Man Frank's Cough Syrup

Ingredients

1 ½ cup honey
¼ cup lemon juice fresh squeezed
½ cup bourbon (I use blackberry)
½ cup water

Instructions

Warm honey 1 ½ cup honey on low heat just enough to make it mixable.
(30 seconds or less)

Fresh squeeze lemon to make ¼ cup of lemon juice.

Combine and stir honey, lemon, 2 tbs cinnamon, ½ cup bourbon, and ½ cup water until completely mixed.

Take 1 tbs if you catch it early before it develops into a cold. If you have a full cold, take 1 to 2 tbs every hour until cold ends.

Submitted by: Sarah Marie



MEAD

MEAD

Submitted by: Brenda Theurer

ORCHARD MEAD (Makes 1 Gallon) Greg & Susan Burns ~ Nature's Image Farm

Ingredients:

- 1 Gallon of fresh pressed cider (non-pasteurized)
- 1-2 Lbs Honey
- 1/2 Cup Raisins
- 1/2 tsp yeast nutrient or another 1/2 Cup of Raisins
- 1 packet of Lalvin D-47 yeast

How to:

1. Add 3 Quarts of cider to a fermentation vessel (1 gallon bucket/carboy with air lock)
2. Blend honey with 1 Quart of cider in a stock pot on low heat (70-90F) then add to fermentation vessel leaving 2-3" headspace.
3. Add raisins, nutrient to fermentation vessel and stir well.
4. Add yeast packet to fermentation vessel and stir.
5. After 1 month rack to a secondary vessel (1 gallon bucket/carboy with air locks) and continue to do so monthly until no activity is seen in the airlock
6. Once fermentation is complete rack into bottles and age for a month or two.
7. The mead can be tasted at any point after initially racking and can be enjoyed throughout the process. If you enjoy the flavor before fully fermented, cold crash in the fridge or outdoors in the winter to stop the fermentation process and rack into bottles to enjoy or age.



What are you WEARING?

“Limited Edition for a Limited Time”

While supplies last, only two hats left. If you are interested in the hats or shirts please click the “contact” button on our website to inquire.





Queen Right Colonies®

CALIFORNIA PACKAGE BEES

Pre-order Starting November 1, 2021
3 lb. Package Bees
with Queen



QRC

Get Ready for Spring!

queenrightcolonies.com

43655 State Route 162 • Spencer, OH 44275
440-647-2602 • info@queenrightcolonies.com

Ventilation

Ways to Provide Ventilation in a Beehive

Below are two options you can use to provide ventilation for your hives.

The best hive airflow systems incorporate methods that encourage fresh air to enter into the bottom part of the hive and allow stale, warm and moist air to exit through the top.

Upper Entrances

A hole, which can be drilled in a sheltered location in the uppermost hive body and then screened over to allow for airflow, will act as a chimney for the hive, pulling air from the bottom and allowing it to escape through the vented hole at the top. This works especially well with a screened bottom board. An upper entrance can be installed, as well, which will increase airflow and reduce congestion at the main lower entrance. Many returning foragers will choose to use an upper entrance when it's available, thereby reducing congestion at the lower main entrance.

If you drill a hole in the hive body to create a vent for heat to escape, and the bees don't use it, the hole should be covered with a piece of screen to guard against robbing activities. You need an upper entrance for cleansing flights, which means the bees leave the hive for a little while during winter.

Screened Bottom Boards

The screened bottom board which is often used for *Varroa* control can also be used to increase ventilation, allowing air to freely flow up through the bottom of the hive and escape through a venting method incorporated at the top. Some screened bottom boards are designed with a drawer or tray that is fitted below the screened bottom. The drawer can be opened when airflow is needed or closed completely or partially to prevent or limit airflow.



Wrapping Honey Bee Colony for a Northern Winter with Tar Paper

University of Minnesota Instructional Poster #164, Gary S. Reuter and Marla Spivak, Department of Entomology
www.extension.umn.edu/honeybees

I know it's sideways, but it's really good stuff!

Insulation

I know it's sideways, but it's really good stuff!



1. The first step is to evaluate the colony in September for its wintering ability. It should have: a young prolific queen, enough honey stores (75-95 lbs.), large bee population (10+ frames of bees) and few miles. Feed syrup medicated for Nosema.



2. The colony should be in 3 deep hive bodies with most of the honey toward the top. The holes in the bottom two boxes should be closed.



3. The hole in the top box should be open. If you do not have a hole for an upper entrance you should drill one now. Make it below the handle.



4. The entrance reducer should be placed with the 3" space facing up.



5. Soon after the first of November start wrapping by placing a moisture board on top of the inner cover. This is a porous sheeting that will absorb moisture from the hive and evaporate to the outside. Shown is 3/4" Bird Rite® sheeting.



6. The moisture board is very important. Shivering bees in the winter cluster produce a lot of metabolic water that must not freeze inside the colony. Do not use one that has a moisture barrier. If you do not have access to this sheeting a stack of newspaper 1" thick can work. Do not use Styrofoam type material.



7. Cut off a piece of roofing felt (150) long enough to wrap around the colony and overlap 2-3", I use 78".



8. Staple the paper where it overlaps. For more security nail a thin board over the lap.



9. Fold the paper over the top. Note the open space in the middle. This is to allow the moisture to evaporate from the moisture board. If your paper is to long cut it off so this hole is there.



10. Put the cover on top. Do not push the cover down over the sides; you want it to be up a little so the air can evaporate the moisture from the moisture board. Be sure to put a rock on top to keep the wind from blowing the lid off.



11. Cut a hole in the tar paper to correspond to the upper entrance.



12. Staple the paper around the hole to prevent tearing in the wind.



13. Optional. You can make a little landing board and nail it below the hole. This also keeps the cover tight against the box.



14. Optional. You can also make a little wind deflector and staple over the hole. This can stop some of the wind from blowing in the entrance. Be sure to put it up from the landing 1/2" to let the bees enter.



15. For more information on managing honey bees see our manual [Beekeeping in Northern Climates](#). For details on mites and diseases see [Honey Bee Diseases and Pests](#) manual or [Healthy Bees](#) web course.
www.extension.umn.edu/honeybees

Don't forget to get yours at the beginning of every meeting.

Congratulations to our 50/50 Raffle Winner!!!

WINNER: Brad Richmond

Collected: \$82.00; Split \$41.00



As the Club is providing Coffee at our Meetings, we thank the Members who have brought pastry and candy each month. It is greatly appreciated!



THANK YOU



lassified

Classified Ads Any member in good standing may place an ad for bee-keeping related items for sale or trade once a quarter free of charge. This ad will not exceed 1/8th of a page in size. Additional ads will be subject to advertisement fees. Advertisement Fee Schedule: 1/8th Page: \$5 month, 1/4th Page: \$7 month, Half Page: \$10 month, Full Page \$15 Please note: Information posted is a courtesy to GCBA Members and/or a paid advertisement for business entities. GCBA does not endorse or guarantee quality or pricing. Used foundation should not be sold and will not be advertised. Used woodenware cannot be certified free of some diseases like American Foulbrood. Be very cautious when



oming

GCBA events held throughout the year:

- Field Day in May
- Picnic in July
- County Fair Booth in August
- Special Event in September
- Holiday Party in December
- Live Demonstrations year round

Thank You From All Of Us

2021 Officers

Larry Theurer, President

(216) 741-3798 larry1724@aol.com

Sheila Maurer, Vice President

spmaurer01@gmail.com

Brenda Theurer, Treasurer

(216) 741-3798 larry1724@aol.com

Shannon Warder, Secretary

(440) 832-1776 shan.warder@gmail.com

Directors

Phil Bartosh, Past President

(216) 470-0934

Sarah Marie

(216) 526-5086 sarah_marie@hotmail.com

Tracy McKenna

tgannon2@mac.com

Denzil St.Clair

(440) 647-2602

Michelle Killin-Keith, Newsletter Editor

(440) 781-4161