

Cancer Care Appeal is complete!



Cancer Care Appeal
All four systems have been funded!

We are delighted to announce that the Cancer Care Appeal is complete and all four additional cold cap systems have been funded for Rowan Suite at Worcestershire Royal Hospital!

Every donation and pledges of support made will make a real difference for our patients, thank you for your support.

1 in 2 people will develop cancer in their lifetime. And there are over 200 types of cancer, each diagnosed and treated in a particular way.

Systemic anti-cancer therapies are the medicines that are given to cancer patients as part of their treatment. This includes chemotherapy, hormone therapy and immunotherapy.

Chemotherapy is the use of anti-cancer (cytotoxic) drugs to destroy cancer cells. Unfortunately, chemotherapy also affects some normal cells which can cause side effects, including hair loss.

The use of scalp cooling or 'cold caps' is proven to be an effective way of combatting chemotherapy-induced hair loss and can result in a high level of retention or completely preserve the hair.

Hair loss from cancer treatment can affect people in different ways and can have a profound affect on a patient's wellbeing, when their world has already been turned upside down.

For many of us our hair is a big part of our identity and a change in our appearance can increase our anxiety and stress, make us feel uncomfortable around other people and affect our self-confidence.

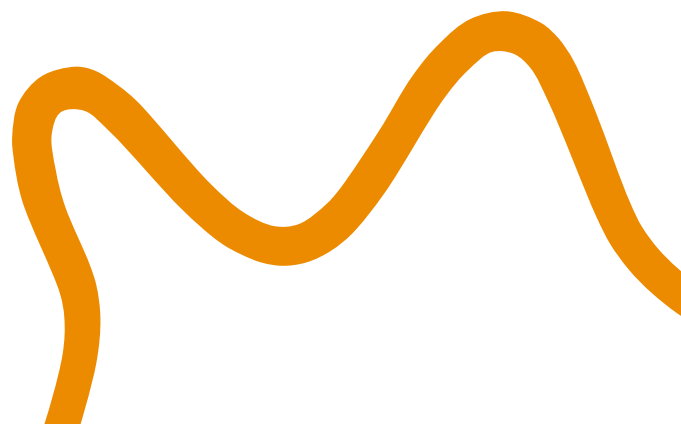
What are the benefits of cold cap systems?

Scalp cooling works by reducing the temperature of the scalp which reduces the size of the blood vessels restricting blood flow. This means that less of the cancer drugs can reach the hair follicles and cause damage.

Refrigerated cold cap systems pump cold liquid through the cold cap using a machine. This enables a more stable and consistent temperature to be maintained. Though not all cancer patients are able to utilise scalp cooling, for those that can the cold cap systems are also more comfortable and less heavy to wear throughout treatment.

These systems are "one size fits all" making it easier for staff to fit and ensuring the cap is moulded perfectly to an individual's head shape, maximising its effectiveness.

Because of you, more systems will be available for patients, helping them to completely preserve or save as much of their hair as possible whilst undergoing cancer treatment, thank you.





Charity Appeal raised £20,000 to provide 20 more day beds for hospitals' Palliative and End of Life Care Team

Friends and family of Worcestershire hospital patients will be able to stay more comfortably at their loved ones' bedsides as they near the end of their lives thanks to a partnership between the Friends of Worcestershire Royal Hospital and Worcestershire Acute Hospitals Charity.

A successful £20,000 fundraising appeal has enabled the Palliative and End of Life Care Team at Worcestershire Acute Hospitals NHS Trust to buy a total of 20 additional day beds – seven for the Alexandra Hospital, Redditch, and 13 for Worcestershire Royal – which are now providing much appreciated support across both sites. which enable relatives to stay more comfortably by patients during their final days and hours. The appeal included a £10,000 donation from the Friends of Worcestershire Royal Hospital to fund most of the new beds on the Worcestershire Royal site.

Worcestershire Acute Hospitals NHS Trust is committed to providing high quality supportive care for patients, and those important to them, at the end of their life. When a patient is dying in their hospitals loved ones can stay with them around the clock. But trying to rest during this difficult time can be tough when on a ward, often loved ones must try and get what sleep they can, sat up in a chair.

Being able to recline or lie down in a more comfortable position allows family members to feel more rested, which can make a difficult and emotional time that bit easier for everyone. Day beds are comfortable reclining chairs suitable for wards that can be adjusted to various positions and laid completely flat.

Sophie Burt, Head of Fundraising and Community Development says, "I would like to say thank you so much to our donors and supporters for their generosity. Thanks go to the Friends of Worcestershire Royal Hospital for their support of this project donating £10,000 funding 10 chairs for use specifically in Worcestershire Royal Hospital.

"The Trust's Palliative and End of Life Care Teams see every day the difference the day beds make to those patients nearing the end of their lives, and their loved ones who are in the hospital beside them. So to the Friends of Worcestershire Royal Hospital, to the Friends of Pershore Hospital who also made a very generous donation to our appeal and to everyone who sent us a donation of any amount I say thank you, your support really does make a difference."

Carol Silvester, the Chair of the Friends of Worcestershire Royal Hospital said: "The purpose of the Friends is to provide support to patients and their families extra to the NHS. We have been providing support for hospitals in Worcester for 75 years and as we celebrate our diamond anniversary this year, we are delighted to welcome the incoming Bishop of Worcester as our new President. The chance to work in partnership with the Worcestershire Acute Hospitals Charity shows what we can achieve, and if anyone would like to join us to support our fundraising efforts on behalf of the patients and staff of Worcestershire Royal Hospital, we would be delighted to hear from them."

To find out more about the work of the Friends of WRH please email chairfwrh@gmail.com

To find out more about Worcestershire Acute Hospitals and how you can show your support please contact info@wahcharity.org or call 01905 768954.



Worcestershire Urology Appeal

Worcestershire Acute Hospitals Charity launches Worcestershire Urology Appeal supporting the development of Urology services at Alexandra Hospital

Worcestershire Acute Hospitals Charity has kicked off Worcestershire Urology Appeal aiming to raise £25,000 to support the development of a new Urology Investigations Unit and Urology Same-Day Emergency Care facility at Alexandra Hospital, Redditch.

Worcestershire Acute Hospitals Charity are appealing for donations to fund a specialized local anaesthetic transperineal prostate biopsy chair costing £20,000. A local anaesthetic transperineal prostate biopsy is a procedure used for prostate cancer diagnosis. Funds are needed to purchase a specialised and dedicated chair for prostate biopsies for the new Urology Investigations Unit.

The benefits of having the chair includes lower infection risks, an increase in the number and accuracy of prostate cancer diagnoses, as well as an increase in overall capacity, enabling more patients to receive a timely and accurate diagnosis.

In addition to the biopsy chair, the Charity are appealing for donations to support the creation of innovative artwork and wayfinding installations throughout the new development. Artwork in hospitals is more than just filling space, by creating a calm and attractive space patients can feel less anxious and be more engaged in their care.

Sophie Burt Head of Fundraising and Community Development at Worcestershire Acute Hospitals Charity said: "As a Charity we support the NHS with over and above additional extras which go beyond the core NHS provision, we hope that the community will support us in enhancing the development with these finishing touches. The development will care for patients across the County and having a welcoming, calming space equipped with state of the art equipment is something that we are keen to provide for the people of Worcestershire."

The new Urology Investigations Unit and Same-Day Emergency Care facility will provide care for urology, bladder, and prostate issues, including suspected cancers. Currently, the hospital's urology service performs approximately 2,500 surgeries, sees over 22,000 patients, and treats 1,500 emergencies across the county each year.

The Charity hopes that the community will support the Worcestershire Urology Appeal aiming to enhance patient care and hospital experience.

To show your support please donate online via Just Giving here, <https://bit.ly/WUAppeal> .

For alternative donation options or more information about Worcestershire Urology Appeal, please contact Worcestershire Acute Hospitals Charity on info@wahcharity.org or call 01905 768954.



Willow and 'Willows Warrior's' put on an event with heart raising funds for Cardiac Services at Worcestershire Royal Hospital

Willow Williams a 9-year-old girl, with help from her 'Warrior's', arranged and hosted a fundraiser 'Have a Heart for Lee' in The Talbot Hotel Ledbury in aid of Worcestershire Acute Hospitals Charity. The event raised funds for Cardiac Services at the Worcestershire Royal Hospital, part of Worcestershire Acute Hospitals NHS Trust.

The fundraiser was a huge success with an outpouring of support from the community seeing a live auction, raffle, local bands performing, craft stalls and food vendors all coming together to help raise over £8,000.

Willow Williams and her original team of 'Willow's Warriors', formed of family and friends who have created a real support network for Willow, planned the extravaganza after being inspired by the care her friend Lee received following two cardiac events. Willow choose to support her local hospitals charity to make a difference for the patients, staff and services where Lee was treated.

On the fundraiser Willows says; "I wanted to help Lee and to get all of the things that he needs so his heart doesn't give up. It's been amazing planning the event and I really looked forward to making a piñata."

Lindsay and Ben Williams, Willow's parents say; "It has been great to see Willow get so involved with the planning and seeing the community come together has been really moving. Our heartfelt thanks to the original Willow's Warrior team; Kim, Andy, Simon, Rav, Hayley, Merv and Lee. And our grateful thanks to those who joined our 'Warrior's; Kay Curtiss, Katherine Neale of Malvern Tutoring, all the staff at The Talbot, Wadworth Inns, the bands Frontrunner, The Lighter Thieves and St Jimmy, Gurney's Family Butchers, Rob and Leigh Schooling of Meridian Speciality Packaging, Rob Taylerson of Real Time Audio, Tom Blackford, James Pugh, Elaine Fox, all of the businesses who have donated the most incredible prizes, and our families for being right behind us every step of the way."

Lucy Brown, Charity Engagement Officer, at Worcestershire Acute Hospitals Charity says; "Supporting Willow and her Warrior's throughout this event has been a real highlight of Worcestershire Acute Hospital's Charity calendar, seeing the outpouring of support from the local community has been really special. As a Charity we support the additional over and above enhancements separate from the NHS Core provision and the funds raised will make a real difference for the patients, staff and services across Cardiology Services at Worcestershire Royal Hospital. Thank you."

To find out more about Worcestershire Acute Hospitals Charity please see their website wahcharity.org or contact info@wahcharity.org



Cycling challenge raises £8,800 for Kidderminster Hospital and Treatment Centre cancer treatment unit Millbrook Suite

In May, a team of seven cyclists took on the monumental challenge of cycling from Kidderminster to Gloucester and back again raising funds for the Millbrook Suite at Kidderminster Hospital and Treatment Centre, part of Worcestershire Acute Hospitals NHS Trust.

The cycling team, made up of pub regulars from local Kidderminster pubs, The Weavers Real Ale House, The Chester Tavern, and local brewery Fownd, cycled through all weathers throughout their journey which took almost ten hours to complete. They were followed throughout by a support vehicle led by Darren and Mary Steadman who were on hand to provide much needed food and refreshments kindly donated by many of Kidderminster's supermarkets.

Alongside those taking on the epic journey, static bikes were set up in The Weavers Real Ale House and The Chester Tavern hosting a competition which aimed to clock up 100 miles each over the course of the day with pub goers chipping in to reach the target. A raffle and live auction also took place in the pubs following generous donations and prizes from local businesses.

The fundraising effort was arranged by Sadie Gill who was treated following a diagnosis in 2022, wishing to give something back to the NHS in thanks for the care she received. Sadie, her husband, family, and friends decided to arrange their fundraiser in support of Millbrook Suite. Sadie says "This is a local treatment centre which has and continues to provide amazing support to a lot of local people." Raising £8,800 the fundraiser was a real display of community support for their local hospital service.

Susie Hoskin, Chemotherapy Unit Manager, Millbrook Suite, says: 'Thank you to Sadie, family, and friends for arranging a fundraiser in support of Millbrook Suite. Your support and the support of the local community will make a real difference for our patients and their loved ones, thank you for taking on such a challenge.'

Sophie Burt, Head of Fundraising and Community Development, at Worcestershire Acute Hospitals Charity says 'The support Sadie, family and friends have shown for the Millbrook Suite Fund has been exceptional. The total raised is a phenomenal amount which will make a real difference. Thank you to everyone involved.'

To find out more about how you can support the Millbrook Suite Fund, which is part of Worcestershire Acute Hospitals Charity, please contact info@wahcharity.org



MMA Club raises over £20,000 for Worcestershire Acute Hospitals Charity

26 novices and experienced fighters alike took to the ring last week to showcase their fighting skills following an intensive 10-week training programme, all in the name of charity.

Redditch Mixed Martial Arts (MMA) arranged their sixth Fight Night in support of Worcestershire Acute Hospitals Charity's specialist fund - The Worcestershire Neonatal Unit Fund. Following their son's admission to the Transitional Care Unit at Worcestershire Royal Hospital, Jess and James Whiston, gym owner of Redditch MMA, wanted to give something in thanks for the care both their son and they received.

The latest event saw Redditch MMA reach a huge milestone, raising over £20,000 in total from their series of Fight Nights.

Sophie Burt, Head of Fundraising and Community Development, at Worcestershire Acute Hospitals Charity says, "The support Redditch MMA has shown has been exceptional and the total raised is a phenomenal amount which will make a real difference for our patients, their families, staff and services in the Neonatal and Transitional Care Units, thank you to everyone involved."

Continuing, Sophie said that "As a charity, we exist to provide over and above enhancements. The funds raised will support special events, projects and experiences beyond the core NHS provision. As well as much-needed practical support, the funds also allow Worcestershire Acute Hospitals Charity to provide special extras for the babies and their families. All donations make a huge difference."

Redditch MMA are planning their next Fight Night for 16 November 2024 in support of The Worcestershire Neonatal Unit Fund. If you are interested in taking part, following a 10-week free training programme which starts in September, please either contact Redditch MMA on Facebook or attend the gym in person for registration on 9 September 2024.

You can find out more about the [Worcestershire Neonatal Unit Fund](https://wahcharity.org/neonatal-unit) and how to show your support here: <https://wahcharity.org/neonatal-unit> or contact the charity directly to find out more info@wahcharity.org



Wordskii on Wheels devices funded

When in hospital it is vital that patients and staff are able to communicate in a timely and clear manner to ensure that the best care is provided.

Wordskii on Wheels (WoW) provide an on demand interpreting service covering spoken languages and British Sign Language. The devices provide access to interpreters within seconds, are hands free and have an articulated arm meaning that the devices can be tailored to each conversation and positioned most effectively to aid communication.

Trials of WoW across Worcestershire Acute Hospitals NHS Trust have had a real impact on patient experience, ensuring that all our patients can be understood and have their needs met quickly and efficiently.

Which is why we are so pleased to have funded 5 additional WoW devices across the hospitals.

This extra resource, will allow more patients to have quick access to translation services and will support more staff in providing the very best care for our patients.



Celebration boxes funded

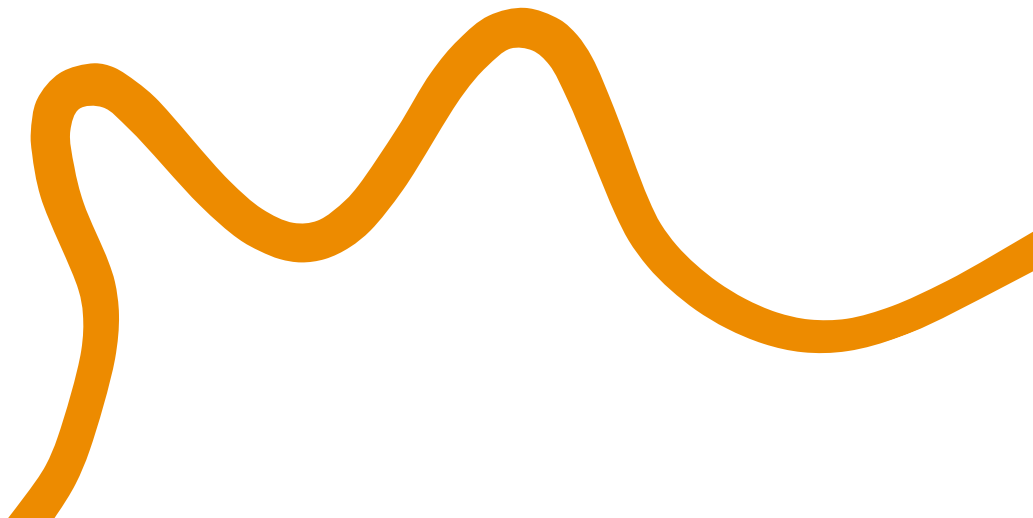
An important part of Worcestershire Acute Hospitals NHS Trust Palliative and End of Life Care Teams role is to help patients and their loved ones celebrate special moments whilst in our care.

Weddings and birthdays are undeniably special occasions and the Palliative and End of Life Care Teams wanted a way to help patients and their families to celebrate in our Worcestershire Royal and Alexandra hospitals and so they created celebration boxes.

Boxes filled with items such as confetti, birthday banners and bunting to help patient's environments feel that bit more special, we are delighted to have funded the boxes and to play a part in helping patients and their loved ones make memories.

Support the Palliative and End of Life Care Team Fund

Show your support for further projects by [clicking here](#)





Utilising the power of art at Worcestershire Acute Hospitals NHS Trust

Worcestershire Acute Hospitals Charity is on an important mission to bring the power of the arts to Worcestershire Acute Hospitals NHS Trust. The charity has joined the National Arts in Hospitals Network (NAHN) at an important time in NAHN's development. NAHN have joined forces with NHS Charities Together and have expanded their remit to all four nations of the UK. Art in hospitals can include visual arts, live music, dance, performance, creative workshops or art exhibitions.

Visual arts are more than just filling a space or brightening up a department. Getting the design right has a huge impact on patients, visitors and staff. The charity team work alongside clinical staff and bespoke designers to create artwork that will meet hospital requirements, provide a tangible benefit to patients and improve the overall environment for everybody. Bespoke, high-quality and inclusive art of all forms can play a major role in the wellbeing of hospital patients and staff, as well as directly influence cooperation with care and the ability of patients to take on important information at a stressful time.

Recent visual arts projects across the Trust have included bright and colourful art installations in the new A&E at Worcestershire Royal Hospital to help welcome children and define the spaces. In the adult A&E the artwork includes local landscapes to help familiarise patients and floor to ceiling murals and wood-effect panels in the mental health assessment rooms make the spaces feel much less clinical, allowing those in need to feel calmer and more able to communicate with staff. A large colourful mural painted by Emily Kaye Illustration at the entrance was designed to ensure every member of our community feels welcome and able to access the care they need.

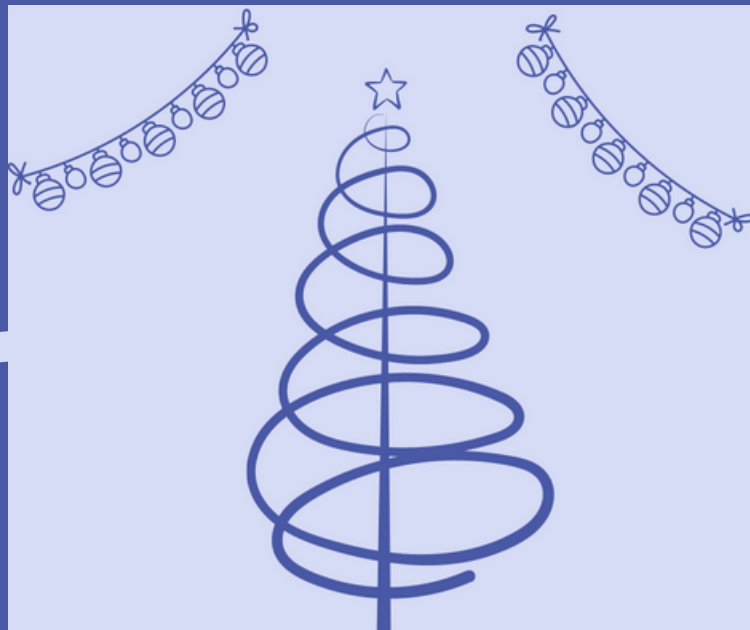
In the Acute Frailty Unit the team worked with staff to create artwork that would meet the needs of our older patients. One corridor was frequently used for patients to walk along and views from train windows make the walk more interesting and encourage longer periods of physical activity. Back in the bed bays the views are through domestic windows to evoke a homelier and comforting feel.

Areas where patients are very likely to be feeling nervous and stressed are designed to evoke a sense of calm and the woodland scenes in the new West Theatres at the Alexandra Hospital have had wonderful feedback from staff and patients alike.

Sophie Burt, Head of Fundraising and Community Development commented: "As a charity we are pleased to join NAHN and continue to work on providing bespoke artwork across Worcestershire Acute Hospitals NHS Trust. Being in hospital is a difficult and stressful time for patients and their loved ones and being able to make the experience that bit easier for everyone using or providing services is at heart of what we do."

Upcoming projects include the Endoscopy Department at Kidderminster Hospital which will focus on local views and offer much needed distraction, and expanding the artwork into the older theatre complex at the Alexandra Hospital theatres.

Sophie added: "We are excited to start these new projects and look forward to introducing different art forms into daily life here at the Trust, creating a more positive and interesting environment for our patients, visitors and staff. These projects are made possible by the generous donations and support of our local community and we want to say a huge thank you to all our supporters."



Festive Appeal Launched

Festive Appeal to raise £20,000 to support the families of patients at the end of their lives
Worcestershire Acute Hospitals Charity has launched a Festive Appeal to raise £20,000 this Christmas to provide extra comfort and rest for the families of patients who are at the end of their lives in Worcestershire's acute hospitals.

The appeal aims to raise funds to provide 20 additional day beds for the Palliative and End of Life Care team at Worcestershire Acute Hospitals NHS Trust. Day beds are comfortable reclining chairs suitable for wards that can be adjusted to various positions and laid completely flat.

The Palliative and End of Life Care team is committed to providing high quality, supportive care for patients and their loved ones at the end of their life, and families are able to stay in hospital with their loved ones around the clock when a patient is at the end of their life. However, trying to rest during this difficult time can be tough when on a ward, and often loved ones have to try and get what sleep they can, sat up in a chair.

Funds raised from Worcestershire Acute Hospitals Charity's Festive Appeal will allow those staying to recline or lie down in a more comfortable position to help them feel more rested, making a difficult and emotional time that bit easier.

[Find out more about the Appeal](#)

Avril Adams, Lead Nurse Specialist for Palliative and End of Life Care team, said: "Helping patients and their loved ones to feel more comfortable in our hospitals is very important to the Palliative and End of Life Care team and Trust staff. Day beds make a real difference for our patients' loved ones, allowing them a chance to get what rest they can much more comfortably. The five day beds we currently have are in constant use, so having 20 more means that more people can be offered this small comfort more frequently making a real difference for our patients and their family members."

Last year 2,300 people were supported by the Palliative and End of Life Care team in their final days. Worcestershire Acute Hospitals Charity funded five day beds in 2022, making a huge difference to family members wanting to stay with their loved ones at the end of their lives.

Now, Worcestershire's Palliative and End of Life Care team is asking for your support to help provide 20 more so that every ward that needs one can have one – ready for whenever someone may need that bit of extra comfort at a difficult time.

This festive season can you help Worcestershire Acute Hospitals Charity to raise £20,000 to buy 20 day beds to support end of life care?

Please, if you can, donate at: <https://bit.ly/JGDayBeds> or text 'DAYBED' to 70460 to donate £5. Texts will cost the donation amount plus one standard network rate message.

We appreciate that times are tough right now and your support is very much appreciated and will make a real difference to our patients and the people important to them.



Ball a success for Children of Worcestershire Cancer Fund

A charity ball held to raise vital funds for children with cancer and their families while they are undergoing hospital care raised an impressive £4,800 thanks to the generous support of all who attended.

Guests, who were joined by the Mayor and Mayoress of Worcester and Robin Walker MP at Worcestershire Acute Hospitals Charity's Children of Worcestershire Cancer Fund Ball, enjoyed an entertaining evening of food, music, dancing and fundraising at the glittering event in September, expertly hosted by BBC Hereford and Worcester's Elliott Webb.

The funds raised will help the Charity and the Children's Cancer Clinic Team at Worcestershire Acute Hospitals NHS Trust to provide over and above additional extras such as wheelchairs, Halloween Parties, Christmas events and even Costa Coffee vouchers to allow for hospital visits to feel that bit more comfortable.

Dawn Forbes, Children and Young People Specialist Cancer Nurse at the Trust, said: "The ball at Worcestershire County Cricket Club was a huge success and wouldn't have been possible without the help and support of my team of volunteers and fellow colleagues. The funds raised on the night will go a long way and will help us to create more special memories for our patients and their loved ones in the future. Thank you to everyone for their generous support."

Sophie Burt, Head of Fundraising and Community Development at Worcestershire Acute Hospitals Charity said: "To see such a display of support from the local community for our specialist fund was wonderful, their generosity of support will make a real difference to our patients and their loved ones, thank you."

The Children of Worcestershire Cancer Fund is part of Worcestershire Acute Hospitals Charity, and supports children from across Worcestershire and Herefordshire receiving treatment at Worcestershire Acute Hospitals NHS Trust.

[Learn more about our fund](#)

If you would like to support the Children of Worcestershire Cancer Fund in continuing its support of children and their loved ones undergoing cancer treatment in our hospitals please [click here](#) or please [get in touch with us](#).



'Finishing touches' added to new Emergency Department at Worcestershire Royal Hospital thanks to Worcestershire Acute Hospitals Charity supporters

Thanks to the support and generosity of donors to Worcestershire Acute Hospitals Charity for the Worcestershire Royal Hospital Urgent & Emergency Care Appeal, 'finishing touches' have been installed throughout the new Emergency Department at Worcestershire Royal Hospital.

Making a huge difference to the experience for patients, staff and services, the department has been transformed with artwork in both the adults and children's areas helping to create a warmer, welcoming and more comfortable environment.

The artwork in the children's department has been specifically designed to make the environment feel more welcoming, from bright and colourful imagery, engaging animal characters and sign-posting. These visual designs also distract and entertain children which greatly improves care and supports parents and carers during upsetting and stressful experiences.

Donors have also enabled the funding of computer game units which will help to put older children and young adults at ease, as well as providing a form of entertainment.

Natalya Moore, Children's Emergency Department Manager said "By enabling these finishing touches supporters have transformed our patients' experience of care. A bright and colourful environment will make all the difference to our young patients. Thank you so much for your support."

[Find out more about the Appeal](#)

To find out more about Worcestershire Acute Hospitals Charity and the appeal please [click here](#) or [contact us](#).

In the adult's area, beautiful large landscape scenes have been installed throughout the department, including in the Mental Health Assessment rooms, plus fun graphics for the X-Ray room. It is hoped that in creating a calming and attractive space, patients will feel less anxious and better able to engage in their ongoing care. These improvements can make a huge difference to a patient's outcome.

Donations have also allowed for the provision of a phone charging station in the main reception of the department. This service will be free of charge for patients enabling people to keep in touch with their loved ones during a stressful time. Sophie Burt, Head of Fundraising and Community Development at WAHC said: "It gives us great pride to have been a part of making this newly opened department the best it can be. The generous donations have really helped us add those extra features that can make such a difference to our patients and staff."

Transformations haven also taken place outside thanks to a partnership with Severn Arts, and with majority funding from Arts Council England. Illustrator [Emily Kaye](#) was commissioned to design and paint a mural on the wall opposite the entrance. The mural is bright and colourful and aims to make everybody who needs the new Emergency Department feel welcome.

Clare Bush, Divisional Director of Nursing for Urgent and Emergency Care said "Thank you for helping to create an Urgent and Emergency Care Department that provides the type of environment that supports our patients' wellbeing. We have been overwhelmed by the incredible support we have received from our community. Thank you so much."