



# KMPA COMMUNICATOR

Volume 86, Issue 2 April, 2025

**KMPA CONVENTION & TRADE SHOW**  
**APRIL 25-26, 2025**  
**DOUBLETREE BY HILTON, 2098 AIRPORT ROAD**  
**WICHITA, KS**

## **IMPORTANT UPDATES and INFORMATION !!**

Our 2025 Convention and Trade Show will be here in less than a month—if you haven't registered there is still time, but a couple of deadlines are nearing.

DoubleTree will be releasing our block of rooms after **April 1**. If you plan to stay at the event hotel, be sure to use the link shown on the registration form or if you call indicate you are with the Kansas Meat Processors.

Our Friday Pre-Convention Bus Tour has limited seating. If you haven't sent your registration indicating you want to be included on the tour, email or call Carol to assure you get a seat. We will leave Double Tree around 8:30 Friday morning and return by 4:00 pm.

For those planning to enter products in the Cured Product Show, 2025 Rules may be found on our website, [kmpaonline.org](http://kmpaonline.org), under "Upcoming Events". A reminder: The category, Cured and Smoked Poultry Products (Class D) will not be offered this year. Check in times for meat product entries are 4:30-5:30 Friday afternoon and 7:30-8:30 Saturday morning.

We have been informed the in-hotel restaurant, Chisholm's American Beef & Ale House will not be open for noon lunch. Chisholm's is open daily for drinks and offers appetizers from 4-5 pm and evening meals from 5-10 pm. There are several dining establishments within close driving distance of DoubleTree.

The Supplier Director position on KMPA Board of Directors will be open this year and will be determined by a vote of the KMPA operator members present at Saturday morning's Annual Meeting. If you are interested in running for the position, notify Carol at [kmpa@nckcn.com](mailto:kmpa@nckcn.com) so your name may be included on the ballot. Names may be added up until meeting time. The supplier will serve a two year term, with option to renew.

Trade Show booth assignments will be emailed out to exhibitors next week with info on unloading at DoubleTree and information on shipping supplies to the hotel.

Fund raising for our KSU Meat Science Scholarship will take place throughout the weekend. Donation of items will be appreciated for the Saturday night auction. Endless Cup Keg beer will be on tap for Friday evening, and Darts will be thrown for chances to win . . . Pulsefire Flame Thrower!!

**Registration forms for Suppliers and Operators are found on pages 22 and 23** of this newsletter and on our website, [kmpaonline.org](http://kmpaonline.org). A schedule for Convention activities appears on page 3.

**\*\* JUST RECEIVED !! \*\*** Used equipment for sale from KSU Meat Lab    **\*\* CHECK IT OUT!!\*\*** on page 11



Kansas Meat Processors Association  
www.kmpaonline.org

Volume 86, Issue 2  
April, 2025

**SUPPLIERS REGISTERED  
FOR THIS YEAR'S TRADE SHOW  
(as of print time)  
\*indicates 1st time vendors**

1. ASK Machines \*
2. Bunzl/Koch
3. Copeland Insurance
4. Energy Panel Structures
5. Handtmann, Inc
6. High Plains Frontier Supply
7. Jarvis Products Corporation
8. Kerres USA
9. Multivac, Inc
10. PolyClip/PreciPak
11. Reiser
12. Tempac, LLC
13. UV&S \*
14. Ultrasource, LLC
15. Walton's Inc
16. WeRFoodSafety

**CMS**  
CUSTOM MEAT SOLUTIONS

*Automate your business with our complete software & hardware solution!*

www.CutMoreMeat.com 1-888-417-2112

**Commerical Laundry Equipment  
for Meat Processors**

- ✓ **Durable, Heavy-Duty Equipment:** Designed to handle the rigorous demands of meat production environments.
- ✓ **Fast Turnaround Time:** Quick and efficient cleaning of bibs, aprons, and other materials to minimize downtime.
- ✓ **Energy Efficient:** Reduce operating costs with high-performance machines that save on water and electricity



**ASK** Machines.com (316) 882-7002  
Sales@ASKMachines.com

**MEAT LINK**

**Livestock and Meat Business Consulting**

- Livestock and Meat Traceability Processes
- Cattle Marketing Strategies
- Cattle and Meat Business Performance Analysis
- Meat Plant Design
- Public Speaker / Producer Meetings

**MARCINE MOLDENHAUER**  
Marcine\_moffice@att.net

P.O. Box 215 Office: 316-640-1256  
Valley Center, Kansas 67147 Cell: 316-640-1256  
[www.meatlinkmanagement.com](http://www.meatlinkmanagement.com)



Kansas Meat Processors Association  
www.kmpaonline.org

Volume 86, Issue 2  
April, 2025

## 85th KMPA Convention & Trade Show April 25-26, 2025

Double Tree by Hilton, Airport  
2098 Airport Road, Wichita, KS  
\$127+ tax convention rate guaranteed til April 1

### Times Subject to Change

#### **Thursday, April 24**

1 pm Golf *Wichita Course* TBD Prize Sponsors : **DARPRO, KERRES, REISER, ULTRASOURCE**  
Sign up at kmpa@nckcn.com or contact James Gaida 316 304-4492 or james@strootlockers.com  
7:00 pm KMPA Board Meeting Double Tree by Hilton

#### **Friday, April 25**

8:30 a.m.-4 p.m. Bus Tour-Native American Enterprises, Cargill Innovation Center, Stroot Locker-Goddard  
10 a.m.- 5 p.m. Trade Show Exhibitor set up ***Emerald Salons 1,2&3***  
2:00 – 5:30p.m. Convention Registration Open *Hotel South Pre-Function area*  
4:30 –5:30 p.m. Cured Product Show Entry *Hotel South Pre-Function area* Zach Krehbiel coordinator  
6:00-8:00 p.m. Trade Show open ***Emerald Salons 1,2&3*** exhibitor drawings throughout evening  
Scholarship /Sponsorship Fund Raisers: Dart Throw Raffle - Endless Beer Cup  
8:30 p.m. Trivia by "Brews Bros" Consulates II & III Sponsored by **POLYCLIP & KMPA**  
9:45-?? p.m. Hospitality ALL WELCOME *Control Tower* beverages sponsored by **WALTONS, INC**

#### **Saturday, April 26:**

All **PROGRAMS** and **MEETINGS** will be held in Consulates II & III

7:30—8:30 a.m. Cured Product Show Entry *Hotel South Pre-Function area* Zach Krehbiel coordinator  
7:30—10 a.m. Convention Registration Open *Hotel South Pre-Function area*  
7:30 a.m. Coffee/Iced Tea/Sweets *Consulates II & III* sponsored by **MULTIVAC**  
8:00 a.m. Annual Business Meeting President James Gaida presiding  
8:15 a.m. Introductions: Cured Product Show judges, Dr. Liz Boyle  
New Supplier Exhibitors  
8:30 a.m. PROGRAM "**AAMP 2025 Update**" Sam Gazdziak, AAMP Communications Manager  
9:00 a.m. Cured Product Show judging starts *Consulate I*  
9:00 a.m. PROGRAM "**Covering Insurance Needs in the Industry**" Lance Sharp, Copeland Insurance  
9:30 a.m. PROGRAM "**Establishing Workforce Contacts**" Troy & Bryan Leith, Midwest Meats, Abilene  
9:45 a.m. Exhibitor's Meeting ***Emerald Salons 1,2&3*** Brad Heidebrecht presiding  
10:00 a.m. Trade Show Open ***Emerald Salons 1,2&3*** exhibitor drawings continue  
11:45 a.m. Trade Show Closes Exhibitors clean up by 1 p.m.  
Noon Past President's Luncheon ***Emerald Salon 4*** guests welcome with reservation  
**LUNCH ON YOUR OWN**  
1:00-1:20 p.m. Cured Product Show entrants view & discuss with judges *Consulate I*  
1:20-1:35 p.m. Cured Product Show public viewing *Consulate I*  
1:35-1:45 p.m. Cured Product Show distribution of products to Suppliers  
1:45 p.m. PROGRAM "**Processed Meat Product Evaluation**" Dr. Liz Boyle, 2-3 judges  
2:00 p.m. PROGRAM "**Building the Perfect Meat Flavor**" Bruce Armstrong, LifeSpice sponsored by **REISER**  
"Break Time" Sponsored by **KERRES**  
3:00 p.m. PROGRAM "Clay Center Locker Video Tour" Brad Dieckmann, Clay Center Locker  
3:45 p.m. PROGRAM "Fun with Flavors" Bruce Armstrong, LifeSpice sponsored by **REISER**  
5:00 p.m. Adjournment  
5:30–6:30 p.m. Social Time *Consulate Ballroom* - Sponsored by **ULTRASOURCE & PRECIPAK**  
6:40 p.m. Annual Banquet and Award Presentations *Consulate Ballroom*  
Medallions of Beef/Pork Loin sponsored by **HANDTMANN**  
Cured Product Show Winners  
Prize Drawings: 1st- \$500 toward KMPA or AAMP Convention, 2nd—\$100, 3rd-\$50  
Auction  
9:15 p.m. President's Celebratory Reception ALL WELCOME *Control Tower*, beverages by **WALTONS, INC**

#### **Sunday, April 27**

8:00 a.m. KMPA Board of Directors Meeting—Four Points by Sheraton





Kansas Meat Processors Association  
www.kmpaonline.org

Volume 86, Issue 2  
April, 2025



**800-552-9237**

11972 Riverwood Drive  
Burnsville, Minnesota 55337  
952-854-2231

**Proud to Give Top  
Quality Service to  
Small and Medium  
Size Meat Processors**

- Custom Fibrous Casings
- Van Hessen Natural Casings  
(Sheep, Hog, and Beef),  
(Preflushed and Proline Tubed)
- Devro Collagen  
(Beefstick, Fresh, Processed,  
Curved)
- Vacuum Pouches and Shrink Bags
- Poly-Clip Distributor  
(New and Repair Services)
- Speco Knives and Plates

**QUALITY ALWAYS SHOWS**



**QUALITY**  
CASING CO., INC.

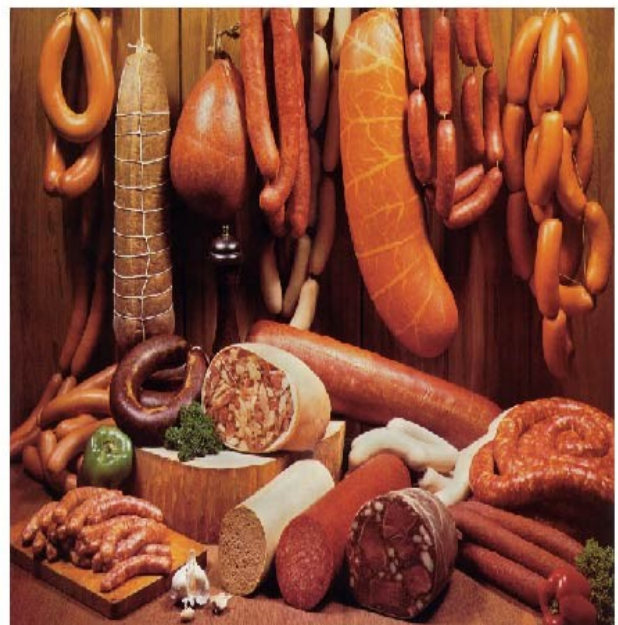
*Featuring a complete line of:*

- Natural hog, beef and sheep casings
- Edible collagen, fibrous and vacuum pouches
- Casings for skinless products

**1-800-328-8701**

P.O. Box 229, Hebron, KY 41048

www.qualitycasing.com • email: qnc@qualitycasing.com  
fax: (859) 689-5177







Kansas Meat Processors Association  
[www.kmpaonline.org](http://www.kmpaonline.org)

Volume 86, Issue 2  
 April, 2025

 This advertisement for Kerres USA features a central collage of industrial meat processing equipment. At the top center is the Kerres USA logo, which consists of the text "KERRES USA" in a bold, sans-serif font, with a red and blue horizontal bar to the right. Below the logo, several pieces of equipment are displayed, each with a circular callout identifying its function:
 

- KERRES SMOKING SYSTEMS:** A large, vertical industrial smoker.
- KERRES CLEANING SYSTEMS:** A large, walk-in industrial cleaning machine.
- K+G WENNER GRINDERS, MIXER - GRINDERS, BOWL CHOPPERS:** A large, horizontal grinding and mixing machine.
- MHS SLICING & DICING SYSTEMS:** Two different models of meat slicers and dicers.
- SCALE ICE MACHINES:** A large, industrial-grade ice-making machine.
- REX FILLING & CUTTING SYSTEMS:** A machine with a hopper and a filling/cutting mechanism.

 To the right of the equipment, there is a vertical strip showing various ingredients in bowls, including red and yellow powders, nuts, and spices. This strip is labeled with "schwa EXPERT SLICING SOLUTION" and "ROGUNTIA INGREDIENT SOLUTIONS". At the bottom left, the Kerres USA logo is repeated, followed by a row of partner logos: KERRES, K+G WENNER, schwa, MHS, ROGUNTIA, FUNK, and REX. At the bottom center, the contact information is provided: 1.800.752.7873, info@kerresusa.com, and www.kerresusa.com.



Kansas Meat Processors Association  
www.kmpaonline.org

Volume 86, Issue 2  
April, 2025

**“If it fits inside, it’s sanitized!”**

## **Jeros “Everything” Washers**

### **Reduce cleaning labor by up to 50%**



- ✓ Saves time and labor (up to 50% reduction in clean-up time)
- ✓ Saves on water usage (only 1 to 2 gals of water per wash cycle)
- ✓ Totally self-contained with on board heating elements for wash and rinse water
- ✓ Environmentally friendly
- ✓ Reduced chemical cost by up to 50% with on-board dosing systems
- ✓ Improved food safety with a built-in 184°F sanitizing rinse
- ✓ Guaranteed sanitation with “Rinse Sense” technology
- ✓ Easy loading and unloading with three open sides
- ✓ Collection baskets for solid waste
- ✓ Ergonomic design
- ✓ Minimal space requirements



**Wash, Rinse, and Sanitize in as little as 3 minutes!**





Kansas Meat Processors Association  
www.kmpaonline.org

Volume 86, Issue 2  
April, 2025



Clips and loops for EVERY BRAND of clipping machinery.  
Lowest prices in the USA! Lifetime warranties.  
www.silver-clip.com

**silver-clip**  
734-354-6551

**Quality runs in the family**  
A Member of the Poly-clip System Family  
precipak.com

**PRECIPAK** Precisely what you need  
**günther** SEALPAC  
**Eberhardt** SOURCE | TECHNOLOGY

**Clip it...clip it good.**



**poly-clip**  
SYSTEM  
polyclip.com

**BUNZL**  
Processor Division  
**KOCH** SUPPLIES

**PROUD TO BE YOUR  
FOOD PROCESSING PARTNER  
FOR OVER 140 YEARS**



**PRICE MATCH GUARANTEE**  
800-456-5624  
Call now and we'll gladly match any competitor's advertised price on matching product.

**800-456-5624 • WWW.BUNZLPD.COM**





Kansas Meat Processors Association  
www.kmpaonline.org

Volume 86, Issue 2  
April, 2025



## A versatile combination

Cut, mix, portion, and link a wide range of high-quality products with the Seydelmann K60 MC Ultra Cutter and Vemag HP1L

- Short batch times – pre-cut and mix in less than one minute!
- Gentle stuffing and filling with in-line grinding
- 24 customizable recipes – repeatable quality
- Sausages with all casing types
- Burgers, bricks, chubs, even pulled pork
- Favorable financing
- **Arrange a test today!**



Watch  
video

**Ryan Hartman**, Sales – MO, KS, Southern NE  
Cell (781) 856-1933 ■ Office (781) 821-1290  
rhartman@reiser.com ■ [www.reiser.com](http://www.reiser.com)





Kansas Meat Processors Association  
www.kmpaonline.org

Volume 86, Issue 2  
April, 2025

**Thermoformers**

**Chamber Machines**

**Traysealers**

Visit our website to learn more

MULTIVAC is a Proud Supporter of the

**Kansas Meat Processors Association**



Need to reduce labor costs? Looking to reduce contamination and have better cleaning access? Need guaranteed reliable packaging that requires less maintenance?

Let MULTIVAC be your trusted solution provider in everything from entry level packaging and processing machines, to fully automated line solutions.



**Contact Logan Lukassen**

Regional Sales Manager

logan.lukassen@multivac.com | 913-415-1960





Kansas Meat Processors Association  
www.kmpaonline.org

Volume 86, Issue 2  
April, 2025

**JBT TIPPER TIE™**

**CLIPPING & PACKAGING**

TIPPER TIE KDCMA      TIPPER TIE TCV      TIPPER TIE TT1815

## ELEVATE YOUR FOOD PACKAGING EFFICIENCY

TIPPER TIE offers a range of innovative automated, semi-automated, and manual clipping and packaging solutions, plus closure and hanging materials, to simplify and enhance your production no matter the size and scale.



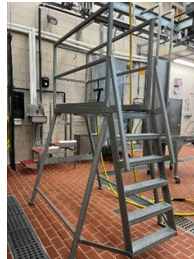
jbtc.com



## TAKE A LOOK AT THIS KSU MEAT LAB EQUIPMENT FOR SALE !!

The Kansas State University meats lab will begin construction /renovation this summer. To make room for the changes and upgrade equipment, KMPA Technical Advisor and KSU Meat Lab manager, John Wolf, has posted the below listed equipment for sale. Sealed bids will be taken until 4/21/2025 and items will need to be removed by 5/1/2025. Contact [jwolf@ksu.edu](mailto:jwolf@ksu.edu) for more information or to submit a bid.

Machine	Brand	Model No.	Serial No.	volt	Ph Condition
Intak packager	Cryovac	RM 572	2006	220	3 Works hard to get film for
BOWL CHOPPER	MEISSNER BOWL CHOPPER	VAC-35	718912	440	3 Need bearings, Vacuum Pump, DC Motor
TUMBLER	LANCE TUMBLER	LT-15	L 1209816	110	1 Works
Stuffer	Vemag Stuffer	500	128 1018-1	440/220	3 Works Linker doesn't work need fixed
Slicer	Pro-Cut Slicer	Kams-14	DC-01109	110	1 Works
Slicer	Biro - Slicer	B350M	80095	110	1 Works
Tenderiser	Biro Sir Steak	Pro-9	00065664	110	1 Works
Tumbler	Biro Vac Tumbler	VTS-42	42780	110	1 Works
Tenderiser	Hobart Steakmaster	403	1853896	110	1 Works
Mixer	Manca Mixer	RM-20	1518	110	1 Works
Pattie Machine	Hollymatic Pattie	54	61281	110	1 Works
Pattie Machine	Bridge Patty Machine	5AP	29049	220	3 Great for Parts
Pattie Machine	Accupat	3AP	8110CH	220	3 Great for Parts
Splitting Saw	Jarvis 4 Band Saw			220	3 Works
Brisket Saw	Kentmaster 300	500E	D-6085	220	3 Works





Kansas Meat Processors Association  
www.kmpaonline.org

Volume 86, Issue 2  
April, 2025



800-777-5624

UltraSourceUSA.com



EQUIPMENT AND SUPPLIES FOR THE MEAT & FOOD INDUSTRY
KILL FLOOR
PROCESSING
PACKAGING
LABELING



**FREY**  
Maschinenbau

**FREY**  
VACUUM STUFFERS  
& ACCESSORIES

With stuffer hopper capacities ranging in size from 88-lbs. to 660-lbs. and filling capacities of 4,189-lbs. per hour to 24,250-lbs. per hour, we are confident we have a machine with a production capacity to match your business goals & budget objectives.

**HIGH PLAINS**  
**FRONTIER SUPPLY LLC**  
Quality Equipment and Products from Harvesting to Packaging

**RÜHLE**



**Enviro-Pak**

**REX**  
TECHNOLOGIE  
VACUUM FILLER & PORTIONING SYSTEMS

**PS**  
**SEASONING**  
Est 1986

**SCHÄLGEMAT.**

Our Services

- \* Sales
- \* Installation
- \* Training
- \* Service
- \* Support

What We Sell

- \* Kill Floor Machinery
- \* Processing Equipment
- \* Smokehouses
- \* Product Spices and Seasonings
- \* Packaging Equipment

High Plains Frontier Supply, LLC

1055 East 1st Street Loveland, CO 80537

Office: (970) 776-9881 Fax: (970) 776-6900

Email: Info@HighPlainsSupply.com

**TemPac**

**We Stick With You!**



- ✓ PRE-PRINTED CUSTOM LABELS
- ✓ FREEZER BLANK LABELS
- ✓ FOOD-SAFE INSERTS
- ✓ LABEL PRINTERS & SOFTWARE
- ✓ SCALE WEIGH SYSTEMS
- ✓ LABEL DISPENSERS/REWINDERS

5590 Lauby Rd., Suite 10, North Canton, OH 44720  
P: 800-482-7225 | F: 513-777-3283  
www.TemPac.net



E-mail us for a free label sample kit and money saving quote.





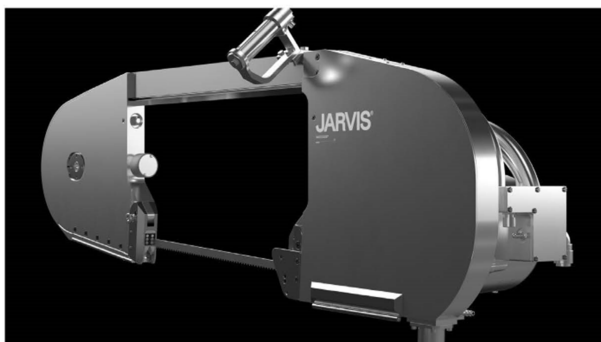
Kansas Meat Processors Association  
www.kmpaonline.org

Volume 86, Issue 2  
April, 2025

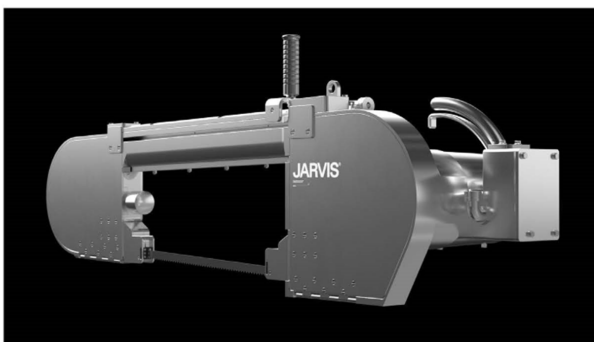
Designed, Manufactured, and Tested  
in Middletown, Connecticut, USA

Jarvis has new and reconditioned bandsaw and Wellsaw® splitting and breaking saws available. Circular bandsaw, reciprocating, dehider, brisket, and Wellsaw® blades sold and sharpened. Jarvis also provides free service and training.

Call Doug Bain, Jarvis' Western Sales Supervisor for delivery or repair information on any Jarvis tool and Wellsaw® by calling 806-674-3497 or emailing to dbain@jarvisproducts.com



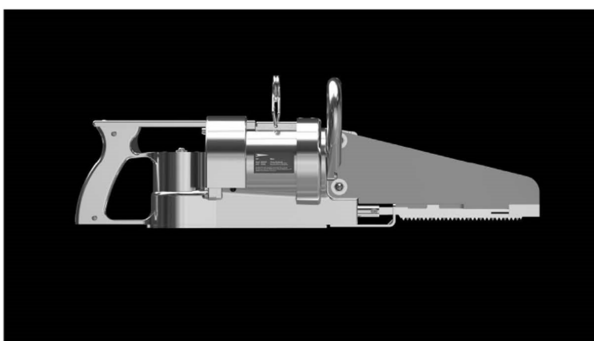
**BUSTER-5** Carcass Splitting Bandsaw for Beef



**BUSTER-6** Carcass Splitting Bandsaw for Pork



**Wellsaw® 404-424** Reciprocating Breaking Saws



**Wellsaw® 444-464** Reciprocating Breaking Saws

**JARVIS®**

Jarvis Products Corporation  
33 Anderson Road  
Middletown, CT 06457  
United States of America

www.jarvisproducts.com  
sales@jarvisproducts.com  
T 860-347-7271  
F 860-347-6978





Kansas Meat Processors Association  
www.kmpaonline.org

Volume 86, Issue 2  
April, 2025



# EVOLUTION LEADS TO REVOLUTION



CE UL SP  
LISTED  
Certifications Pending



  
MADE IN THE USA



## MEET THE NEW R-SERIES!

**The R-Series runs Flexible, Rigid, Skin, Shrink, & Easy Peel Films ALL ON ONE MACHINE!**



- Durable
- Customizable
- Increased Speed



**Let VC999 help you create the perfect packaging solution! - [www.VC999.com](http://www.VC999.com)**

[www.vc999.com](http://www.vc999.com) • 877-435-4555 • [Sales.Canada@VC999.com](mailto:Sales.Canada@VC999.com)



Kansas Meat Processors Association  
www.kmpaonline.org

Volume 86, Issue 2  
April, 2025

# MAINCA USA

## CLIPPERS & STAPLERS



**LORENZO BARROSO**



From heavy duty manual clippers to fully automatic vacuum-stuffer interfaced models, Lorenzo Barroso and Mainca USA, Inc have teamed up to bring you the clippers you need. Known world wide as a leading manufacturer of the finest quality clippers and staplers in the industry, Lorenzo Barroso provides the expertise and experience to handle the most demanding clipping project. Lorenzo Barroso offers clipper models to close all types of casing from fibrous to collagen to natural to plastic, as well bags and netting. With options such as clips on reels, string loop applicators and string-tie devices, Lorenzo Barroso provides an impressive line of single and double clippers. So when you need to upgrade your closure method, call the leader in innovation and design – Call Mainca USA and step-up to Lorenzo Barroso clippers and staplers...





Kansas Meat Processors Association

[www.kmpaonline.org](http://www.kmpaonline.org)

Volume 86, Issue 2

April, 2025

# Need Better Efficiency?



## Get a Clipper and Stuffer

*for Faster, Higher-Quality Ground Beef Packaging  
and Sausage Making*

[waltons.com](http://waltons.com)

**W WALTON'S**  
♦Everything but the Meat♦

**800.835.2832**





Kansas Meat Processors Association  
www.kmpaonline.org

Volume 86, Issue 2  
April, 2025

**PRO SMOKER**  
SMOKEHOUSES  
ESTD 1977

**OLD-WORLD PIT-HOUSE  
FLAVOR. THAT'S THE  
SECRET BEHIND  
THE PRO SMOKER.**

“ If I were to buy another  
smokehouse it would definitely  
be another Pro-Smoker. ”

**MARK STAHL**  
WICKS MEAT SHOPPE  
HANDIYOH, MN

920-625-3017 info@pro-smoker.com  
www.pro-smoker.com

**THE LEADERS IN FLAVOR INNOVATION**  
**OUR CRAFT IS FLAVOR**

**The NOTORIOUS  
P.I.G. RUB**  
PULLED PORK SEASONING

NET WT 6.4 OZ (181g)

CUSTOM BLENDING | RETAIL PRODUCTS | LIQUID MANUFACTURING | BULK SEASONING

(800)-328-8313 psonline@psseasoning.com psseasoning.com



Kansas Meat Processors Association  
www.kmpaonline.org

Volume 86, Issue 2  
April, 2025

# Linker MACHINES

**Mike Hebrank**

20 Pine Street  
Rockaway, NJ 07866

Telephone: (973) 983-0001  
Fax: (973) 983-0011  
www.linkermachines.com



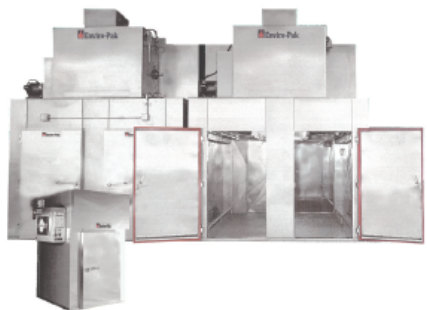
*Celebrating over  
75 years  
of excellence in  
linkers and peelers!*



## **Enviro-Pak**

Look to us for affordable, quality equipment built in the U.S.A. that will last.

Why settle for an oven that has been "adapted" for your food product when we manufacture a size and type of oven tailored to your needs.



We give you more options with our flexible designs and control packages than any other manufacturer.

Smoke, Cook, Bake, Dry, Roast, Steam or Chill your product with our versatile product line.

15450 SE For Mor Ct. Clackamas, OR 97015 U.S.A.  
503-655-7044 1-800-223-OVEN (6836) 503-655-6368 Fax  
www.enviro-pak.com sales@enviro-pak.com

# WE TURN IDEAS INTO SOLUTIONS



**Kyle Cameron**  
Territory Manager

(800) 477-3585  
(316) 617-3399 Mobile  
kyle.cameron@handtmann.us  
**handtmann.us**

**handtmann**  
*Ideas for the future.*



KANSAS MEAT PROCESSORS ASSOCIATION  
BOARD MEETING, FEBRUARY 15, 2025  
MIDWEST MEATS, ABILENE

19

In the absence of President James Gaida the meeting was called to order by Executive Director Carol Klema. Additional members present were, Brad Heidebrecht, Kelly Cool, Cody Simon and Zach Krehbiel. James Gaida, Erik Steeves and Jeremy Sheffler joined later via zoom. Guest for the meeting was Troy Leith who has agreed to serve on the Board the next term.

The minutes of the last meeting were present for reading. Zach moved the minutes be approved, Brad seconded the motion and all approved.

In the absence of the Treasurer, Carol gave an update on the Association's finances. KMPA has a CD with a value over \$36,000 and a checking account balance of \$44,576.57. Zach moved to approve the treasurer's report, Cody seconded the motion and all approved.

Discussion was held on how to handle the KSU Scholarship interviews this year. It was decided to plan to hold the interviews by Zoom and visit with Liz to set up an evening sometime in April.

The proposed change in selection of Supplier Board member was reviewed. Supplier members will be notified that a position is open and will be given the opportunity to submit their name for consideration before convention. A ballot will be distributed at the Annual Meeting (held on Saturday morning at the convention) and operator members present will be allowed one vote per plant. Write in suppliers will be allowed that day. In addition to one supplier member, three operator positions will need to be filled. Discussion was held on possible candidates and Brad offered to visit with several of them when he is at their establishments.

Discussion was held on a concern voiced by a member over possible OSHA overreach and excessive penalties. The person involved had attempted to visit with their Senator but had not been able to arrange a meeting/call. It was suggested that Carol check with Dr. Boyle at KSU and see if she would have any information or connections that might be able to answer some of our questions.

The group reviewed an email received asking for our member's thoughts on a bill being presented to the Senate pertaining to the hiring of undocumented immigrants. The email will be sent to our operator members for them to review and respond to as desired.

A person to fill the Executive Director position will be needed after this year's convention. Carol turned in her resignation last year effective at convention end 2025. Possibilities were discussed and will be investigated.

Convention planning took up the remainder of the meeting.

The Board decided to proceed with the earlier discussed plans to invite Oklahoma processors to join us in Wichita this year. Carol will check with Oklahoma directors on the best way to get the invitation and information out to them.

Plans for the Cured Meat Show were reviewed. It was decided to allow Oklahoma attendees to enter products in the following four categories only—Cured and Smoked Dried Beef, Jerky Other than Beef-Whole Muscle or Ground and Formed, Cured and Smoked Game Meat, Large Diameter Deli Meat. The plaques will be identical to the ones awarded for other categories. Best of Show award this year will be a trophy identical to last year's. A refrigerated truck is needed to store the meat products and Carol will visit with a couple of local operators to set that up. Carol will visit with Dr. Boyle on any arrangements needed in Wichita and share with her the judges we have lined up.

Due to increased costs of catering services, and in an effort to give operators full benefit of the Friday evening Trade Show, the Board decided not to offer the Friday evening buffet. This year's location is near several eating establishments and the DoubleTree has onsite dining as well.

The decision was made to not advertise a Silent Auction but plan to have a Live Auction with any items donated by suppliers or members. James will attempt to locate an auctioneer to handle the sales.

The Endless Cup keg, and Dart Throw Raffle will be offered again. Zach will research possible prizes and report to the Board. A price range of \$300-\$400 was agreed upon.

Entertainment for Friday after the Trade Show closes was discussed. No decision was made at this time.

It was decided to bring back the "Past President's" luncheon for Saturday noon. KMPA will cover the cost of the meal for the past president, but if they would like to bring a guest/spouse they will need to buy a ticket.

Next meeting will be at DoubleTree, April 24, 7 pm.

With all business completed, Zach moved to adjourn the meeting, Cody seconded the motion and all approved.

## 2025 KMPA OPERATOR MEMBERS as of March, 2025 \*New Members 2025

**Allen Meat Processing 25**  
Mike/Donna Uhl  
PO Box 92  
Allen, KS 66833  
620 757-5318

**Anderson Meats 24**  
Curtis /Janet Anderson  
1187 Last Chance Rd  
Troy, KS 66087  
785 985-2292

**BenLee Processing 25**  
Tom/Kathy Carroll  
12783 Hiway 25  
Atwood, KS 67730  
785 626-3732

**Bern Meat Plant 25**  
Tim/Gina Miller  
411 Main St/PO Box 97  
Bern, KS 66408  
785 336-2165

**Bichelmeyer Meats 25**  
Jim/Joe Bichelmeyer  
704 Cheyenne  
Kansas City, KS 66105  
913 342-5945

**Bobo's Meats 24**  
Mark & Luke Hubert  
2526 "O"  
Belleville, KS 66935  
785 955-2322

**Bowser Meat Processing 25**  
Ed Johnson  
513 S Palmberg  
Meriden, KS 66512  
785 484-2454

**B-W Meat Processing 25**  
Jeff Walker  
PO Box 452, 103 W Jefferson  
Fredonia, KS 66736  
620 378-2441

**Brants Market 24**  
Adam/Ashley Comeau  
121 W Mill St  
Plainville, KS 67663

**Canton Locker 24**  
Joe/Nadine Allen  
PO Box 512  
Canton, KS 67428  
620 628-4499

**Cedar Vale Locker 23**  
Aaron/Julie Moreland  
1505 Marsh St  
Cedar Vale, KS 67024  
316 737-6785

**Circle P Processing 24**  
Alex/Karly Parker  
411 East Main  
Waterville, KS 66548  
785 363-6120

**Daisy Hill Farms 24**  
Rodney Edgington  
243 Road 50  
Ulysses, KS 67880  
620 521-2223

**Dieck's Inc. 25**  
DBA Clay Center Locker Plant  
Brad/Lisa Dieckmann  
516 Grant Ave  
Clay Center, KS 67432  
785 632-5550

**Ellinwood Packing Co. 25**  
Jeff/Annette Troyer  
PO Box 425  
Ellinwood, KS 67526  
620 564-3156

**Ellsworth Packing 25**  
Kim Schneider  
102 S Colorado  
Ellsworth, KS 67439  
785 472-4177

**Erie Locker 24 \***  
Jeremy Piersall  
119 S Main St.  
Erie, KS 66733  
620 244-5321

**Family Tree Meats 25**  
Bryan Tyler/Tabitha Brown  
2122 RD 6  
Grenola, KS 67346  
620 358-3838

**Fanestil Meats 25**  
Dan Smoots  
PO Box 629  
Emporia, KS 66801  
620 342-6354

**Farview Farms Meat Co 24**  
Drew/Trenna Forster  
6325 NW Topeka  
Topeka, KS 66617  
785 246-1154

**First Choice Meats 25**  
Matt Ryff  
540 S 5th St, PO Box 427  
Herington, KS 67449  
785 258-3160

**Flint Hills Custom Meat 22**  
Michael Zyrowski  
100 Prospect St.  
Onaga, KS 66521  
785 844-3994

**Freedom Meats, LLC 23**  
Josh Harris  
201 S Spring  
Caney, KS 67333  
620 515-1261

**Gene's Processing 25**  
Gene/Penny Gilmore  
1601 W 4th  
Pittsburg, KS 66762  
620 670-5056

**Glasco Locker 25**  
Kelly/Laurie Cool  
PO Box 175  
Glasco, KS 67445  
785 568-2364

**Grinnell Locker Plant 25**  
Grace Randel  
108 S Adams/PO Box 67  
Grinnell, KS 67738  
785 824-3400

**Hat Creek Butchery 25\***  
Damien Denmark  
107 Ontario St  
Plains, KS 67869  
620 977-6001

**Heritage Meats, Inc. 25**  
Darwin/Darlene Decker  
406 E Broadway/PO Box 721  
Leoti, KS 67861-0721  
620 375-5151

**Jackson Meats 24**  
Andrew/Jeni Bryan  
13 W 6th Ave  
Hutchinson, KS 67501  
620 662-4465

**Kensington Locker, Inc 25**  
Dylan/Diedra Tweedy  
218 W Hiway 36  
Kensington, KS 66951  
785 476-2834

**Kirby Meat Co., Inc 25**  
Tim Kirby  
PO Box 1700, 2501 E Wyatt Earp  
Dodge City, KS 67801  
620 225-0031

**Kooser's General Store 24**  
Herb/Sandy Kooser  
808 E Miami  
Hiawatha, KS 66434  
785 742-7639

**Krehbiel's Specialty Meats 24**  
Zach/Janae Krehbiel  
1636 Mohawk Rd  
McPherson, KS 67460  
620 241-0103

**Leonard Meat & Produce 24**  
Chuck/Robyn Clifton  
105 NE Quincy  
Topeka, KS 66603  
785 969-9836

**Meatworks of Kansas 23**  
Ryan Feil  
315 S Main St  
Riley, KS 66531  
785 485-2595

**Meade Locker & Proc., LLC 25**  
Chad/Tiffany Ziebart  
PO Box 321  
Meade, KS 67864  
620 371-4056

**Medicine Lodge Meat Co 25**  
Cheryl/Kent Remmers  
Michael Carselowey  
605 W 3rd St  
Medicine Lodge, KS 67104  
620 213-1053

**Midwest Meats 25**  
Bryan Leith  
610 S Buckeye Ave  
Abilene, KS 67410  
785 280-2126

**Moeders Meats 24\***  
Trey Moeder  
11998 US Hwy 283  
Ness City, KS 67560  
785 798-3464

**PBJ, Inc.**  
**DBA Pat's Beef Jerky 25**  
Chris/Dana Schumacher  
401 Main St  
Liebenthal, KS 67553  
785 222-3341

**Peabody Sausage House 24**  
Jeremy Sheffler  
Jason Callahan  
109 W 9th St  
Peabody, KS 66866  
620 983-2160

**Percival Packing, LLC 25**  
Jamie Percival  
710 W 5th St  
Scott City, KS 67871  
620 872-7199

**Real Kansas Meats LLC 24**  
Andrew Miller  
16670 Barber Road  
Fall River, KS 67047  
620 330-6334

**Richards Cold Storage 25**  
Marvin/Darlene Richards  
Brock Volkman  
111 S Park  
Valley Center, KS 67147  
316 775-0251

**Santa Fe Trail Meats 25**  
Aaron/Angelee Higbie  
206 W 1st., PO Box 206  
Overbrook, KS 66524  
785 665-7713

**Schroeder's Inc 24**  
Dustin Guymon  
418 E Washington  
Arma, KS 667121  
620 347-8521

**Simon Meat Locker 25**  
Cody Simon  
100 Industrial Dr  
Olsburg, KS 66520  
785 259-2203

**Stroot Locker—Goddard 25**  
James Gaida  
Doug Stroot  
111 N Main, PO Box 251  
Goddard, KS 67052  
316 794-8762

**Stroot Locker—Mulvane 25**  
Justin/Megan Stroot  
115 N First Ave  
Mulvane, KS 67110  
316 777-4421

**Swenson Meat Proc 25**  
DBA Duis Meat Processing  
Smoky River Meats  
Ryan/Melissa Swensen  
1991 E 6th St Trfy  
Concordia, KS 66901  
785 827-1311

**Timber Creek Meats 25**  
Erik/Cory Steeves  
1507 Flynn Dr.  
Parsons, KS 67351  
620 778-9628

**T & T Processing 22**  
Brett Copeland  
309 E 4th St  
Fowler, KS 67844  
620 646-5911

**Walnut Valley Packing 25**  
Bruce/Nancy Carselowey  
1000 S Main  
ElDorado, KS 670042  
316 321-3595

**Whitewater Locker, Co 22**  
Scott/Terre Bowlin  
114 W Topeka, PO Box 160  
Whitewater, KS 67154  
316 799-2100

**Winchester Meat Proc. 25**  
Ed/Angee Knoll  
203 Winchester, PO Box R  
Winchester, KS 66097  
913 774-2860

**Woodson County  
Prime Meats 25**  
Jennifer Hood  
702 W Butler  
Yates Center, KS 66783  
620 625-2711

**Yoder Meats 24**  
Chad Bontrager  
3509 E Switzer  
Yoder, KS 67585  
620 465-3807

### OUT OF STATE

**Walke Meat Co 25\***  
Lyndon Walke  
9815 E 520 RD  
Claremore, OK 74019



## 2025 KMPA SUPPLIER MEMBERS as of MARCH, 2025

### American Packaging Corp 25

Tony Schleich  
400 W Blanchard  
So Hutchinson, KS 67505  
620 663-1222

### American Resources 22

Tony J. Nelson  
21231 Indigo Ave  
Clear Lake IA 50428  
641 357-7447

### Arrowhead Environmental Services 23\*

Tony Sullivan  
10348 S 261st East Ave  
Broken Arrow, OK 740214  
918 504-4412

### Biro Manufacturing Co 23

Skip Muir  
1114 W Main  
Marblehead, OH 43440  
419 798-4451

### Bunzl USA, Inc/Koch Supplies 25

Joel Kennon  
5710 NW 41st St  
Riverside, MO 64150  
816 448-4300

### Cleaner Greener Future 24

Clint Morris  
1800 Main  
Parsons, KS 67357  
620 778-1436

### Copeland Insurance Agency 25

Jay Copeland  
601 S 5th St. Suite B  
Manhattan, KS 66502  
785 776-0089

### Custom Meat Solutions 25

Scott Schank  
PO Box 43  
Askov, MN 55704  
888 417-2112

### Energy Panel Structures 25

Jason Strunk  
603 N Van Gordon Ave  
Graettnger, IA 51342  
712 859-3219

### Enviro-Pak 25

Division of TechMark, Inc  
Patrick Martini  
PO Box 82289  
Portland, OR 97282

### Handtmann, Inc 25

Kyle Cameron  
28690 N Ballard Dr  
Lake Forest, IL 60045  
316 617-3399

### Hantover, Inc 24

Chris Giggy  
11880 College Blvd  
Overland Park, KS 66210  
913 214-4975

### High Plains Frontier Supply 25

Donovan/Dawn Daws  
PO Box 2640  
Loveland, CO 80539  
970 776-9881

### Insurance Planning, Inc 25

James Braun  
Box 100  
Hays, KS 67601  
785 625-5605

### International Collagen Resource Zetcorp, Inc 24

Kurt Zetah  
249 Sandstone Drive NW  
Eyota, MN 55934  
507 799-0092

### Jarvis Products Corp. 25

Mary Hipsher  
33 Anderson Rd  
Middletown, CT 0647-4626  
860 347-7271

### Kerres USA 25

Tom Springman  
140 Choate CIR  
Montoursville, PA 17754  
800 752-7873

### Linker Machines 25

Michael Hebrank  
20 Pine Street  
Rockaway, NJ 07866  
973 983-0001

### Madgetech 21

Kelly Wright  
6 Warner Rd  
Warner, NH 03278  
603 415-9093

### Mainca USA 25

Dale Schmidt  
8064 Chivvis Dr.  
St Louis, MO 63123  
877 677-7761

### Mar/Co Sales, Inc 25

Dave/Missy Downs  
11972 Riverwood Dr  
Burnsville, MN 55337  
800 552-9237

### Meatlink Management 25

Marcine Moldenhauer  
PO Box 215  
Valley Center, KS 67147  
316 640-1256

### Mound Tool Co. 24

Edward Simo/Jake Angell  
9301 Watson Industrial Pk  
St Louis, MO 63126  
314 968-3991

### Multivac, Inc 25

Logan Lukassen  
11021 N Pomona Ave  
Kansas City, MO 64153  
913 415-1960

### My Locker Site 23

Casey Mitchell  
14505 Hwy 40  
Amherst, NE 68812  
308 440-3975

### Oversea Casing Company 25

John Traver  
601 S Nevada St  
Seattle, WA 98108  
206 682-6845

### Poly-clip System 25

Elina Siegel  
1000 Tower Road  
Mundelein, IL 60060  
847 949-2800

### Promarksvac Corp 24

Darren Chu  
1915 E Acacia St  
Ontario, CA 91761  
909 923-3888

### PS Seasonings & Spices 25

Pro Smoker / Vortron  
Amy Winters  
PO Box 278 216 W Pleasant St  
Iron Ridge, WI 53035  
920 644-0137

### Quality Casing Co. 25

Alicia Novachich  
PO Box 229  
Hebron, KY 41048  
800 328-8701

### Reiser 25

Ryan Hartman  
725 Dedham St.  
Canton, MA 02021  
781 821-1290

### Rollstock, Inc 23

Josh Kaszuba  
5720 Brighton Ave.  
Kansas City, MO 64130  
800 295-2949

### Scott Pec, Inc. 23

John/Stephanie Frohling  
PO Box 550  
Box Elder, SD 57719  
303 823-5839

### Silver-Clip, Ilc 25

Mike/Meredith Prokurat  
41287 Vincenti Ct.  
Novi, MI 48375  
734 354-6551

### SmartLocker USA 23

Alex Freeman  
650 S Prairie View Dr. 125  
West Des Moines, IA 50266  
563 650 3112

### Tempac, LLC 25

Mike Barker  
Robin Bacopoulos  
5590 Lauby Rd. Ste. 10  
North Canton, OH 44720  
330 418-4747

### Tipper Tie/JBT 25

Alan Davey/Pat Veling  
2000 Lufkin Rd  
Apex, NC 27539  
800 331-2905

### Ultrasource, LLC 25

Reagan Dolan  
1414 West 29th St  
Kansas City, MO 64108-  
816 360-2005

### USI Insurance Services 24

Dusty Grant  
245 N Waco Ave. #412  
Wichita, KS 67202  
316 217-1913

### Vanguard Shrink Films 25 \*

Scott Powell  
9830 Commerce Pkwy  
Lenexa, KS 66219  
800 772-1187

### VC999 Packaging Systems 25

Dan Lynch  
419 E 11<sup>th</sup> Ave.  
Kansas City, MO 64116  
800 728-2999

### Visko Teepak 23

1126 88<sup>th</sup> Place  
Kenosha, WI 53143  
262 697-6566

### Walton's Inc. 25

Brett Walton/Kurt Carter  
Brad Heidebrecht  
3639 N Comotara  
Wichita, KS 67226  
316 831-1526

### WeRFoodSafety 24

Paul Turner  
2110 U.S. Hwy 12 W  
Menomonie, WI 54751  
715 309-2950



## 85th KMPA Convention & Trade Show

April 25-26, 2025

DoubleTree by Hilton, Wichita Airport

2098 Airport Road, Wichita, KS 67209

WichitaAirport.DoubleTree.com

**Use booking link below for \$127+fees special room rate**

### SUPPLIER/EXHIBITOR REGISTRATION FORM

**Deadline: April 11, 2025 (late sign-up accepted if space is available)**

Firm Name \_\_\_\_\_ Owner/Mgr/Contact Person \_\_\_\_\_

Address \_\_\_\_\_

City \_\_\_\_\_ State \_\_\_\_\_ Zip \_\_\_\_\_

Phone \_\_\_\_\_ E-mail \_\_\_\_\_

**Names of those attending:** (Adult-"A"/Child-"C"; golfers indicate w/"G")

1. \_\_\_\_\_ 4. \_\_\_\_\_

2. \_\_\_\_\_ 5. \_\_\_\_\_

3. \_\_\_\_\_ 6. \_\_\_\_\_

#### **Registration: 10' X 10' Booth**

\_\_\_\_\_ Booth space @ \$250 (member) or \$300 (non-member).....**by April 11** ... ..\$ \_\_\_\_\_

(Late registration add \$50)

\_\_\_\_\_ Additional Booth spaces @ \$200/space .....\$ \_\_\_\_\_

\_\_\_\_\_ Number of electrical hookups @ \$30 each .....\$ \_\_\_\_\_

\_\_\_\_\_ Banquet Ticket (Saturday, April 26 7:00pm) @ \$50. ea..... \$ \_\_\_\_\_

**2025 Supplier Membership Dues, (if Membership not previously paid ) \$100** \$ \_\_\_\_\_

**Newsletter Advertising :** Full Page \$300, Half \$160, Quarter \$85 \$ \_\_\_\_\_

**2025 KMPA Sponsorship Opportunities or  
KMPA /KSU Meat ScienceScholarship Contribution** \$ \_\_\_\_\_

Send checks to : KMPA, 701 Logan Ave., Beloit, KS 67420

**Total due** \$ \_\_\_\_\_

**OR**

Pay securely with credit/debit card: Return form to [kmpa@nckcn.com](mailto:kmpa@nckcn.com) Go to [kmpaonline.org](http://kmpaonline.org)  
Select "Pay Now" at top of page

Direct Link for DoubleTree Reservations, Copy to browser:

<https://www.hilton.com/en/attend-my-event/ictardt-kmp-1e77c769-f4be-417d-af07-d5d78cc26713/>





**85th KMPA CONVENTION & TRADE SHOW**  
**April 25-26, 2025**  
**Double Tree by Hilton, Airport – Wichita, KS 316 945-5272**  
**Link below for hotel reservations and special KMPA rate**  
**APRIL 1 CUT OFF DATE FOR ROOM RESERVATIONS**

**Operator Pre-Registration DUE APRIL 10, 2024**

Plant Name \_\_\_\_\_ Owner/Manager \_\_\_\_\_

Address \_\_\_\_\_ Phone \_\_\_\_\_

City \_\_\_\_\_ State \_\_\_\_\_ Zip \_\_\_\_\_ Email \_\_\_\_\_

Names attending with you (Adult - A, Child - C)  
Golf Thursday tentative 1 p.m. (indicate G)

1. \_\_\_\_\_ 4 \_\_\_\_\_

2. \_\_\_\_\_ 5 \_\_\_\_\_

3 \_\_\_\_\_ 6 \_\_\_\_\_

(Please disregard Membership Renewal if already submitted)

KMPA OPERATOR MEMBERSHIP RENEWAL ..... \$125 .....\$ \_\_\_\_\_

KMPA AFFILIATE MEMBERSHIP RENEWAL ..... \$35..... \$ \_\_\_\_\_

**Convention Registration:**

Member Plant (Convention Only) \$75 First time member fee waived .....\$ \_\_\_\_\_  
**( ON SITE REGISTRATION \$90 )**

Non-Member Plant \$100..... \$ \_\_\_\_\_

Affiliate Member's Registration Fee waived, but meal tickets apply

\_\_\_\_\_ Friday pre-convention bus tour – locations in the Wichita area - \$20 \$ \_\_\_\_\_

\_\_\_\_\_ Past President Sat. noon lunch FREE for past pres , additional guests/\$25 \$ \_\_\_\_\_

\_\_\_\_\_ Banquet Meal Ticket Sat 6:30 pm \$50/adult .....\$ 20/child \$ \_\_\_\_\_

**Processed/Cured Meats Product Show Pre-Registration:**

\_\_\_\_\_ Items @ \$8 each (Items registered at Convention site will be \$10 each) .....\$ \_\_\_\_\_

**KMPA/KSU Meat Science Scholarship Contribution** .....\$ \_\_\_\_\_

**Remittance Total** .....\$ \_\_\_\_\_

Make check to: **KMPA**

**Remit to:** Carol Klema, Executive Director  
 701 Logan Ave  
 Beloit, KS 67420

**OR**

Pay with **Credit/Debit**  
 go to [kmpaonline.org](http://kmpaonline.org)  
**"PAY NOW"** at top of page  
 submit form by email

Use link below for Double Tree by Hilton Airport special KMPA room rate of \$127+ tax (**hold til 4/1**)

<https://www.hilton.com/en/attend-my-event/ictardt-kmp-1e77c769-f4be-417d-af07-d5d78cc26713/>

Kansas Meat Processors Association  
Carol Klema, Executive Director  
701 Logan Ave  
Beloit, KS 67420



**AAMP**  
AMERICAN ASSOCIATION  
OF  
MEAT PROCESSORS

**86<sup>th</sup>**  
American Convention of Meat  
Processors and Suppliers Exhibition

**July 24-26, 2025**  
Kansas City Marriott Downtown/  
Crowne Plaza Kansas City Downtown  
Kansas City Convention Center | Kansas City, MO