



ADVANCED AGRICULTURE PLATFORM AND AI SOLUTION PRESENTED BY:



JANUARY 2025

Growing the Future Through Accessible Digital A.I. Technology

## Introduction

Founded in 2015, we started delivering solutions and obtained our first major contract with large multinational agrichemical company in 2016. We have 35 employees internationally, with personnel in US, Brazil and China.

We have a strong science team with experience with NASA, coupled with an experienced software development team.

6th Grain develops information data systems and online solutions that integrates weather, soil, remote sensing and farmer-provided information for better farm management decisions.

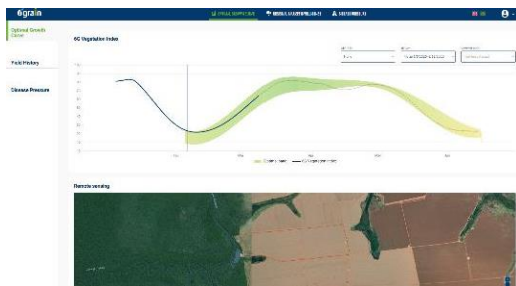


# The Agro Platform's Three Key Products



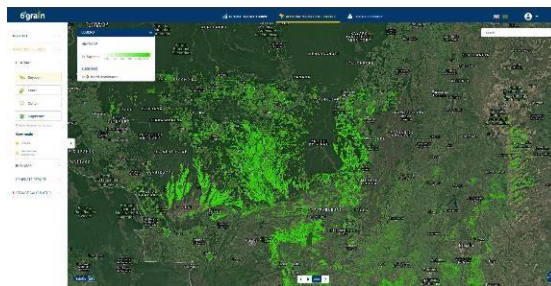
## Optimal Growth Curve

Crop Health & Productivity



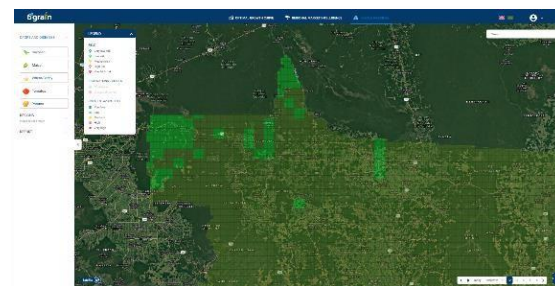
## Regional Market Intelligence

Market Potential Intelligence



## Disease Pressure

7-day Disease Risk Forecasting



6<sup>th</sup> Grain's Agroplatform provides users with 6<sup>th</sup> Grain's three flagship solutions in a comprehensive, modular platform to satisfy all field monitoring and crop market intelligence needs.

Switch between Optimal Growth Curve, Regional Market Intelligence, and Disease Pressure instantaneously, eliminating the need for multiple applications.



# Optimal Growth Curve Screen

## Índice de Vegetação 6G

☐ Compare season

CLIMA:

Nenhum

TEMPORADA:

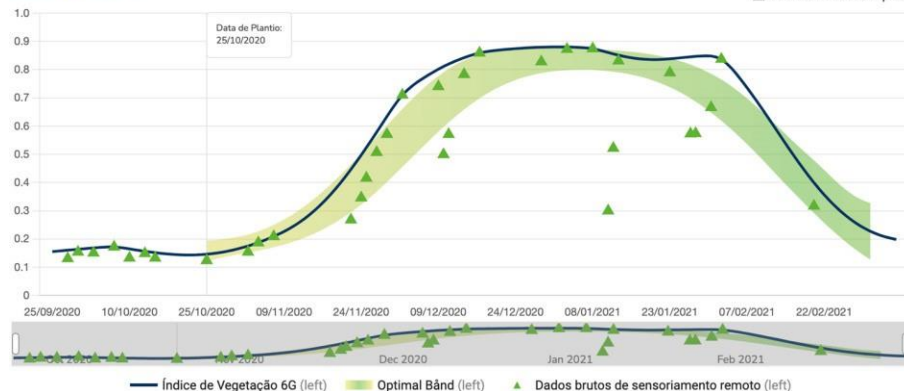
Soja, 25/10/2020

BANDAS:

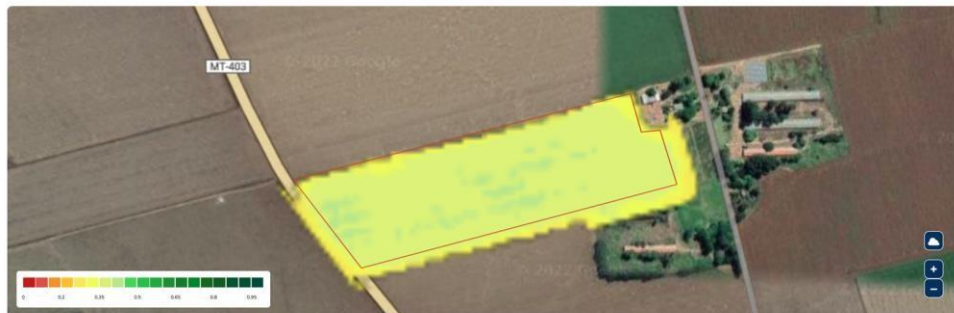
Optimal band

## Índice de Vegetação 6G

☐ Mostrar banda completa



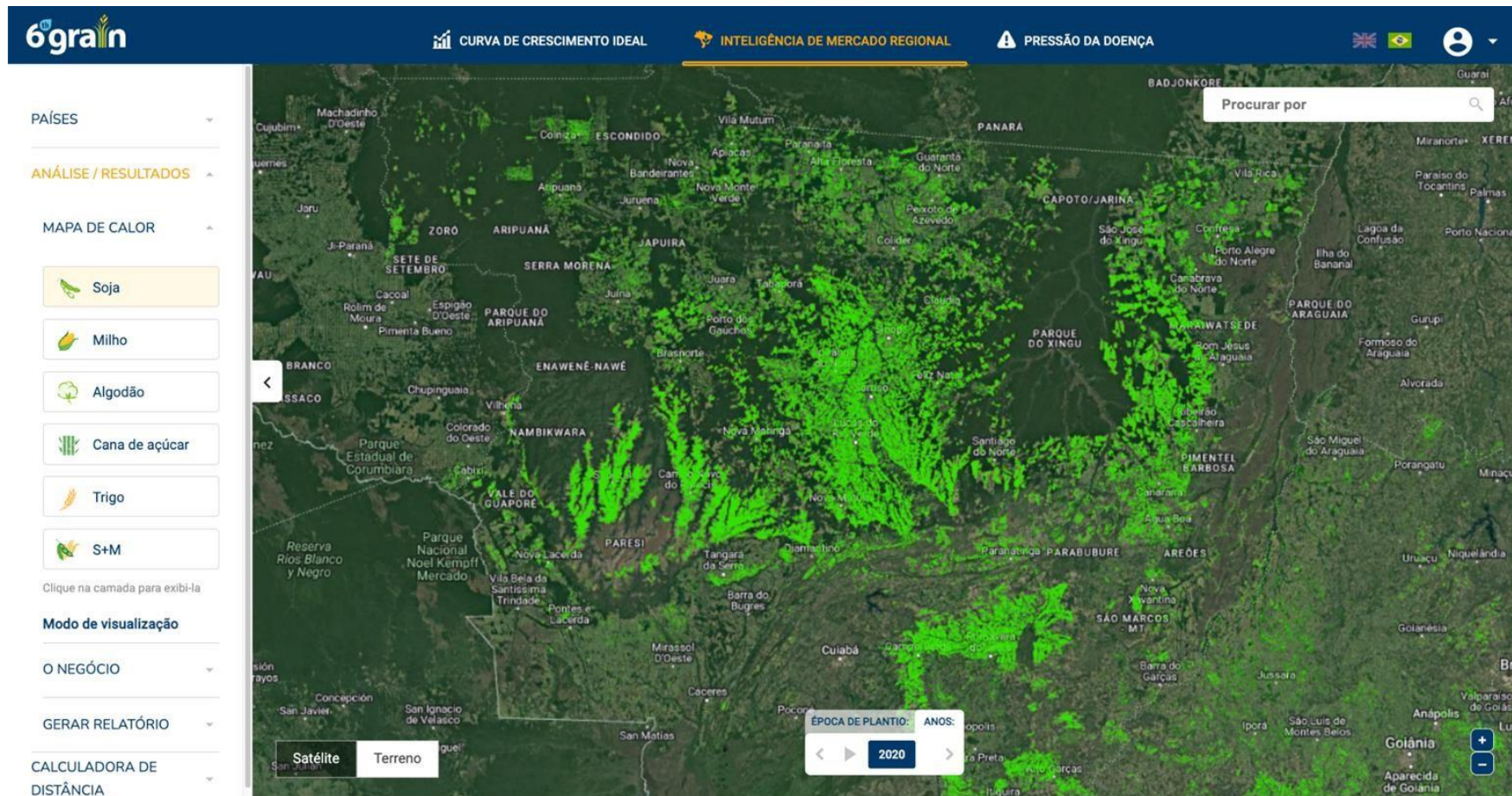
## Sensoriamento remoto



With Optimal Growth Curve, users can track their crop's 6G Vegetation Index as it compares to the Optimal Band.

This field's soybean 6G Vegetative Index (in blue) stays within the Optimal Band, resulting in an actual productivity that closely matches the Simulated Yield shown in the Field Passport.

# Annual Crop Maps for Maize, Soy and Wheat

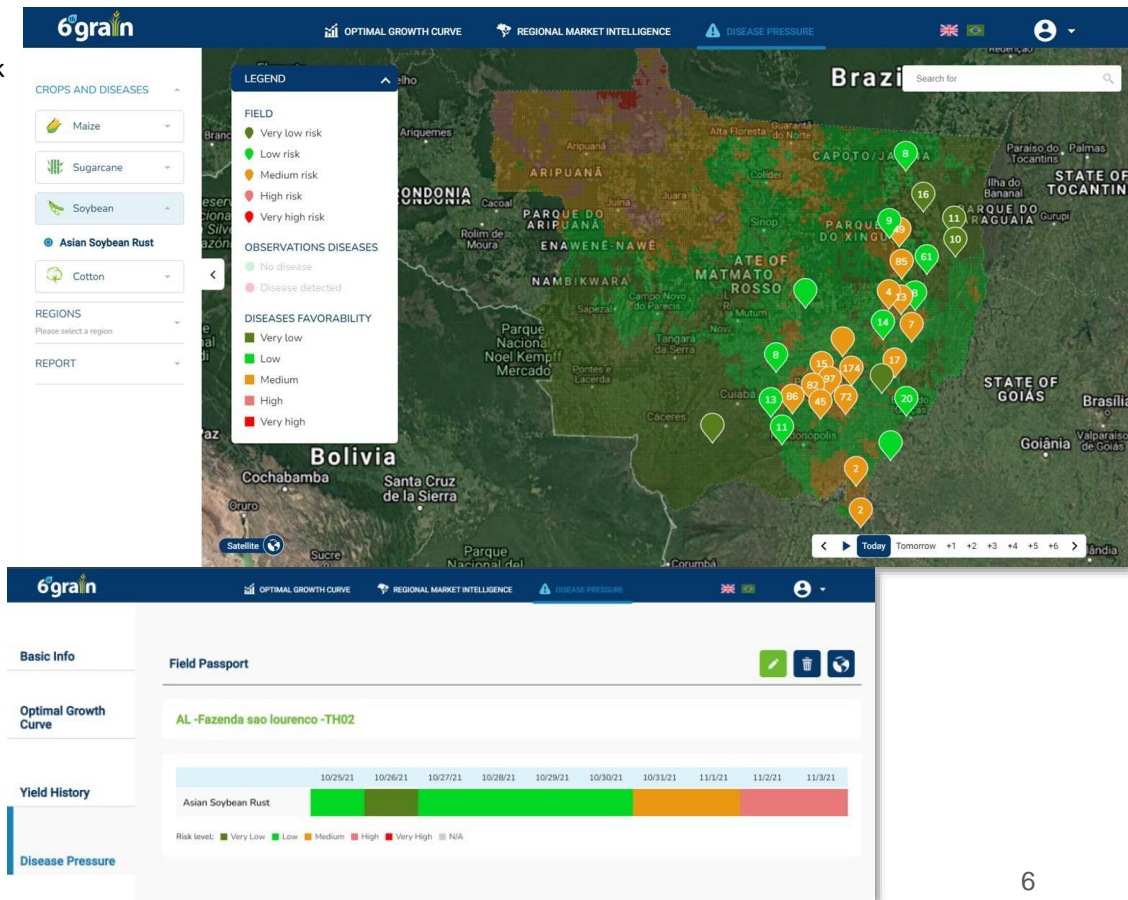


# Disease Pressure Maps

Agroplatform's Disease Pressure presents your disease risk through high resolution maps.

## Map Features

- 7-Day Forecast
- Color-Coded Disease Pressure Gradient
- Disease-Specific Layers
- Distance Calculator
- Client-Specific Customization of User Interface and Filters
- Standard Map View and Satellite View
- Report Function to view exportable list of all field data in a selected area



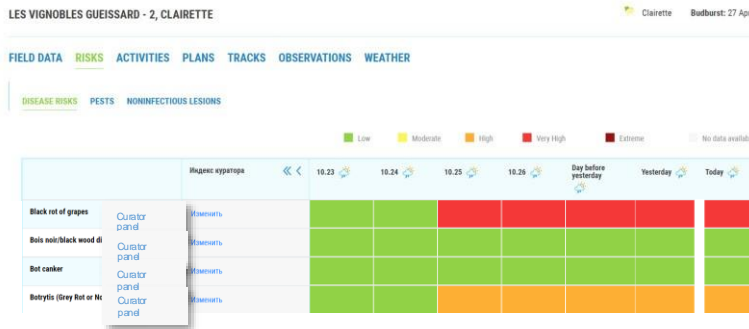
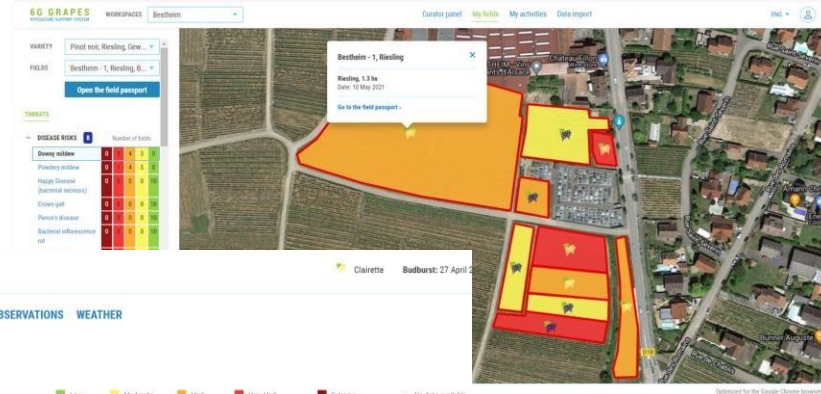
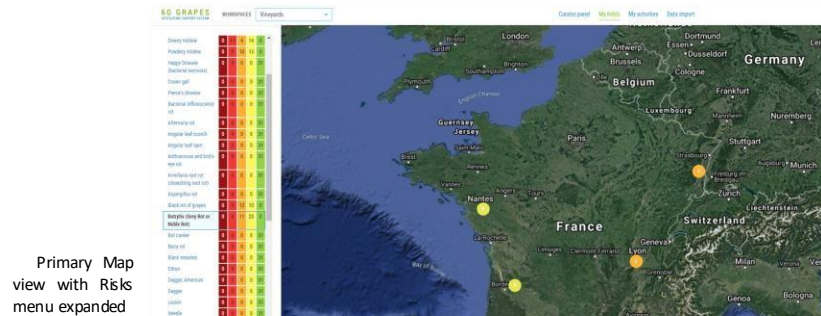


# Crop-Specific products

6G Grapes tracks and provides users with risk forecast for grapevine diseases, pests, and noninfectious lesions. With these threat forecasts and tracking, users can implement grapevine protection protocols early, reducing or avoiding damage to valuable grapevines.

## Field Passport Features

- 7-Day Forecast
- Color-Coded Disease Pressure Gradient
- Client-customizable list of diseases, pests, and noninfectious lesions.
- Disease risk levels for varying timelines
- Rapid disease-crop information updates
- Information put in a structured database used to calibrate model



# Survey Tool for Sustainability Assessments

6th Grain's Survey Tool is an easy to use, customizable survey application that enables users to design and implement surveys.

## On & Offline Field Data Collection

- Data gathering systems integrated into applications or stand-alone
- Instantaneous updating of data in databases for use in models or decision making
- Sophisticated analytical platforms to display information
- Data automatically reported to the database when user returns to wifi or cellular access

Questions and validations can be uploaded by spreadsheet. All aspects of the system can be translated, including help files and directions.

The image displays three screenshots of the 6th Grain Survey Tool interface, showing a sequence of steps in a survey form. The interface is in French and features a blue header with the '6th Grain' logo.

- Left Screenshot:** Shows the '1- RÉGION' (Region) selection screen. It lists four options: TONKPI, GUEMON, CAVALLY, and NAWA, each with a radio button.
- Middle Screenshot:** Shows the 'Coordonnées GPS du ménage' (Household GPS coordinates) screen. It displays the current location: Latitude: N 38°54'0", Longitude: W 77°12'1", Altitude: 108m, and Accuracy: 21.24m. A 'Replace Location' button is visible.
- Right Screenshot:** Shows a list of sample questions (1-10) for data collection. The questions are: 1- RÉGION (GUEMON), 2- DÉPARTEMENT (FACOBLY), 3- SOUS-PRÉFECTURE (FACOBLY), 7- VILLAGE (KONTROU), 8.1- CODE QUARTIER/CAMPEMENT (0001), 8.2- QUARTIER/CAMPEMENT (7852), 9- NUMÉRO DU MÉNAGE (362), 10- DATE DE L'INTERVIEW (03/04/18), Coordonnées GPS du ménage (38.90007035 -77.20039967 108.0 21.237999), Code (01), NOM ET PRÉNOMS (963), and Code (02). At the bottom, there are three buttons: 'Go Up', 'Go To Start', and 'Go To End'.

Survey Tool Sample Questions

## Survey Tool Features

- Easy upload of questions
- Works on any Android device
- Offline capabilities
- Rapid validation of data
- Connected to backend for immediate viewing

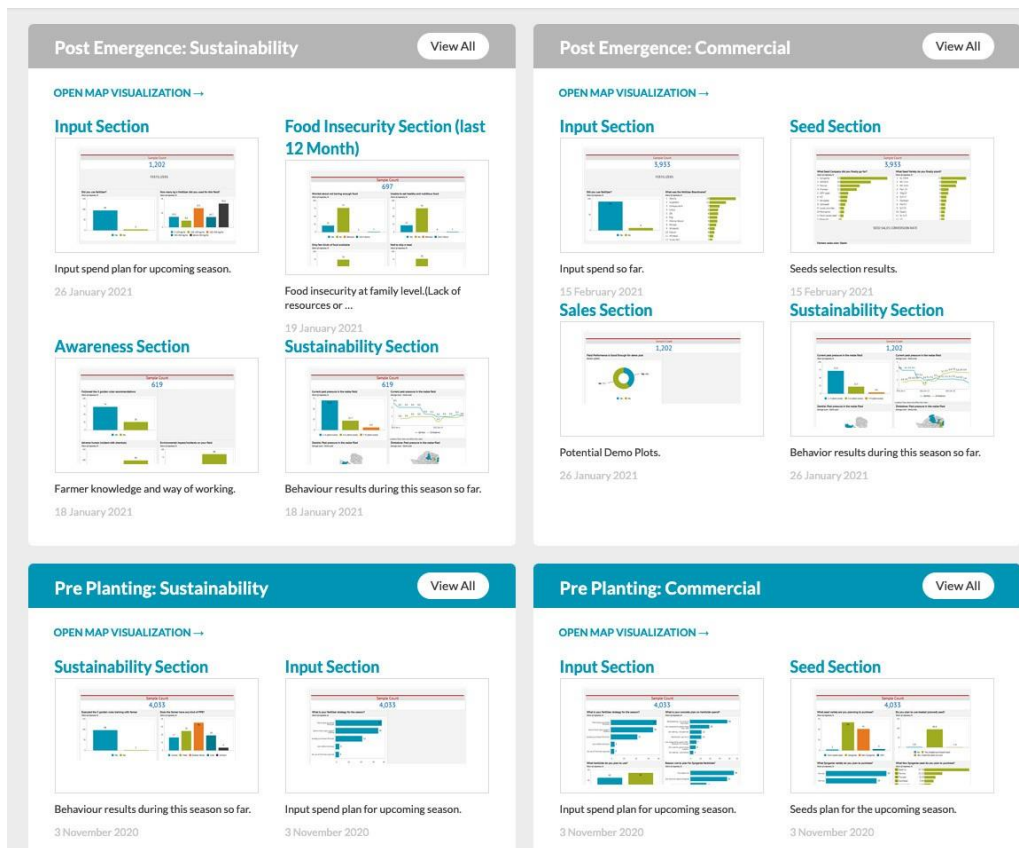


# Database Instant Access

Survey tool results are validated and displayed on a map as they are uploaded. All responses are connected to surveyor information for immediate feedback to the field.

## Spraying Calendar Features

- Validation rules can be automatic or curated by 6<sup>th</sup> Grain analyst
- GPS data gathering via Android on all available satellites
- Reports immediately populated and viewable by section or system



Survey tool result examples

# Thank You

Master Reseller/Channel Partner



For More Information or Demo Request:  
Contact: [shafi@theghazigroup.com](mailto:shafi@theghazigroup.com)  
[www.theghazigroup.com](http://www.theghazigroup.com)