



Annual Report 2022

JANUARY 1 – DECEMBER 31, 2022

MISSION

McLeod Emergency Food Shelf is committed to eliminating hunger and food insecurity as well as improving the health and well-being of our community through equitable access to healthy and nutritious foods, community education, and advocacy.

VISION

We envision a community where everyone has access to good quality nutritious food, understands the consequences of hunger and poor nutrition, and is committed to creating a stronger, healthier community.

We also recognize the dignity of all people and believe food is an essential need.

GUIDING PRINCIPLES

We are responsible and accountable to the respectful, effective, and efficient avenues of food procurement and distribution.

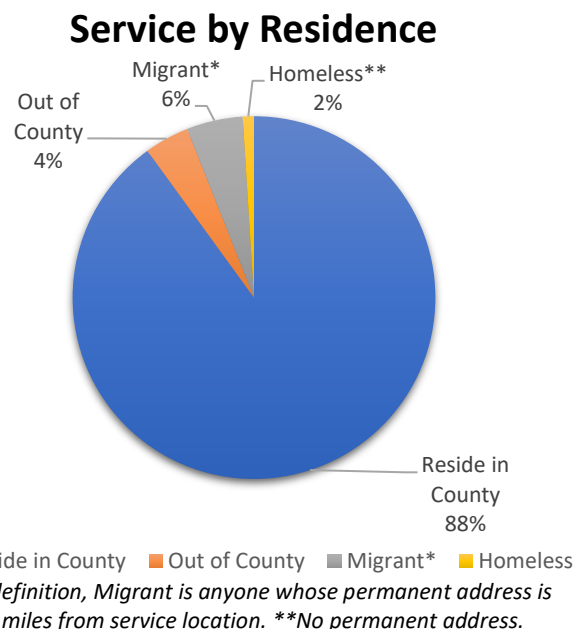
We incorporate a dignified and client-centered model where nutrition, health, and education opportunities are shared.

We believe innovation and community collaboration is essential to support initiatives and meet challenges.

SERVICE AREA

McLeod Emergency Food Shelf (MEFS) serves the general McLeod County area which includes the primary cities of Glencoe, Hutchinson, Brownton, Stewart, Silver Lake, Lester Prairie, Winsted, and Plato.

In accordance with The Emergency Food Assistance Program (TEFAP) requirement, any individual requesting support and physically present, or represented by proxy, at either distribution site or mobile location, shall be served.



LEADERSHIP

2022 Board of Directors

Barbara Jenneke, President
Beth Billstrom, Vice President
Joanne Jacques, Treasurer
Lloyd Graupmann, Secretary
Brittany Litzau
Larry Maiers

Jeff Albers
Jerry Schimelpfenig
Ryan Hansch
Michaela Otto
Dawn Peterson
Carrie Lewis

2022 Staff

Lennie Albers, Executive Director & Glencoe Site Manager
Corinna Orlicki-Klima, Hutchinson Site Manager
Shelly Cardinal, Glencoe Site Assistant
Tiffany Waller, Hutchinson Site Assistant
Ryan Toups, Site Assistant Float
Bruce Kalhoff, MOP Program Manager
Mark Simons, Mobile Outreach (employed 9/2021-10/2022)
Catherine Kraemer, MOP Program Manager

2022 Volunteer Support

The mission and work of MEFS wouldn't be possible without the selfless commitment of volunteers. According to the Independent Sector, the 2022 value of volunteer service per hour was \$31.80 totaling more than \$354,950.00 worth of service. MEFS volunteers are essential to client support, food logistics, food rescue, and special events and projects.

59

Regularly scheduled
volunteers



11,162

Documented hours of service

MEFS is also host to various short-term project volunteers for school, employee engagement, and church service hours as well as community service and Sentence-to-Serve volunteers. Both on-site locations also partner with Central Minnesota Jobs & Training as employment experience stations. Nearly one-quarter of the years volunteer service fit within these categories.

PROGRAM DESCRIPTION & OBJECTIVES

On-Site Client-Choice Grocery Distribution in Glencoe & Hutchinson

The primary program function of MEFS is to provide a variety of well-balanced food options – at no charge! The variety of foods available are in accordance with SuperShelf standards and are supported through robust food rescue partnerships with local grocers. In 2022, each household was welcome once per calendar month for full grocery access as well as additional weekly, fresh produce-only distributions.

Mobile Outreach Program - Driving Away Hunger (MOP)

MOP provides the same quality and service as the On-Site Client Choice Distribution program while addressing transportation and mobility issues by bringing stocked shelves and coolers to designated locations throughout McLeod County. Cities served in 2022 included Hutchinson, Winsted, Lester Prairie, Silver Lake, Plato, Brownton, and Stewart. MOP parked at designated locations twice each month offering groceries and fresh produce much like the on-site SuperShelf model. During the cold-weather months (November-April) a pre-order/pre-pack shopping model replaces shopping the bus.

Seneca Migrant Housing Service*

MEFS partners with Seneca Foods each May through November to provide pre-packaged groceries for individuals living in Seneca seasonal housing. This longstanding partnership provides food support for migrant workers as they adjust to the community and prepare for the harvest.

**Migrant individuals living in independent housing within McLeod County are included in the On-site Grocery Distribution totals.*

Nutrition Assistance Program for Senior (NAPS)*

NAPS Distribution Site (Glencoe Site only). *NAPS boxes are distributed Wednesdays following the 1st Tuesday of every month.* Commodity Food Supplemental Program (CFSP) Authorized program for persons age 60+ who meet income requirements. All program requirements must be met to receive a box.

**NAPS boxes are not included in budgeted income or expenses as MEFS serves only as a distribution site for this program. Pounds/meals through this program are not totaled by MEFS.*



Hutchinson Distribution Site



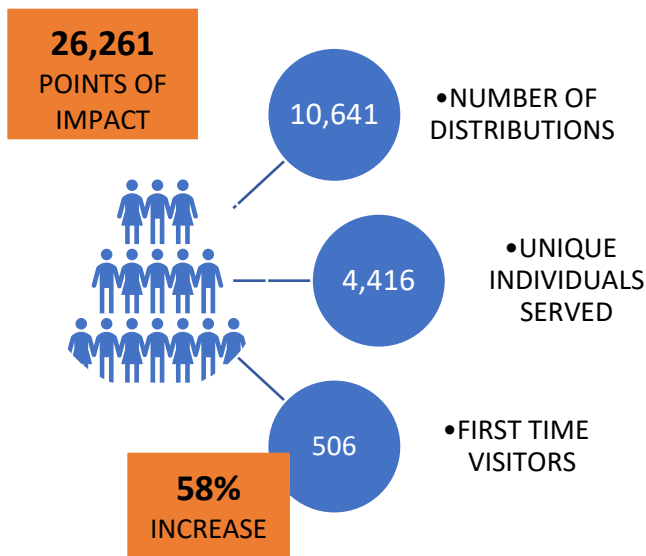
Glencoe Distribution Site



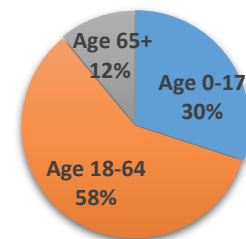
Mobile Outreach Vehicle

2022 DISTRIBUTION SUMMARY & STATISTICS

- In total, 592,810 pounds were distributed throughout 2022, providing ingredients and prepared foods for 456,007 meals.
- 26,231 points of impact (duplicated individuals) were recorded in 10,641 food distributions. Both metrics indicate a 30% increase over 2021.
- 4,416 distinct individuals (unduplicated individuals) were served. 2,595 individuals served were between the ages of 18-64. 1,306 individuals served were children and 515 individuals were over age 65. Usage by age increased an average of 28% in each group over 2021.
- MEFS provided an average of 6 days of food per person per distribution (1.3 lbs/meal).
- Shoppers indicated low-income and accessing weekly produce pick-ups as the top two reasons for utilizing service.



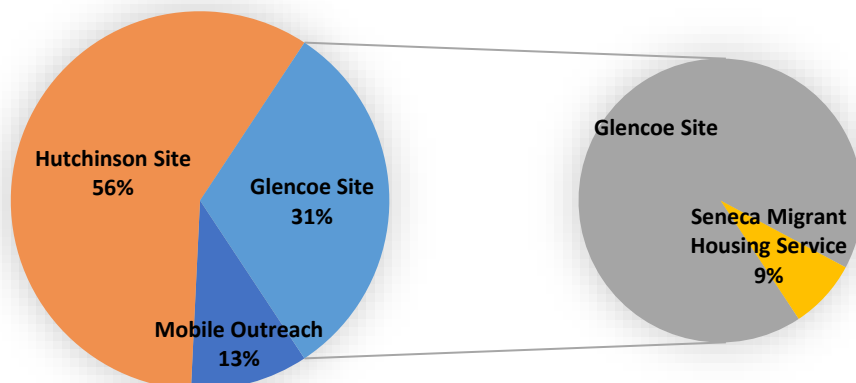
Service by Age



TOP 2 DISTRIBUTION REASONS

Low income
Produce-only pick-up

MEALS PROVIDED BY DISTRIBUTION SITE



456,007 Meals*
provided!

*(1.3 lbs = 1 meal)

592,810 LBS
DISTRIBUTED

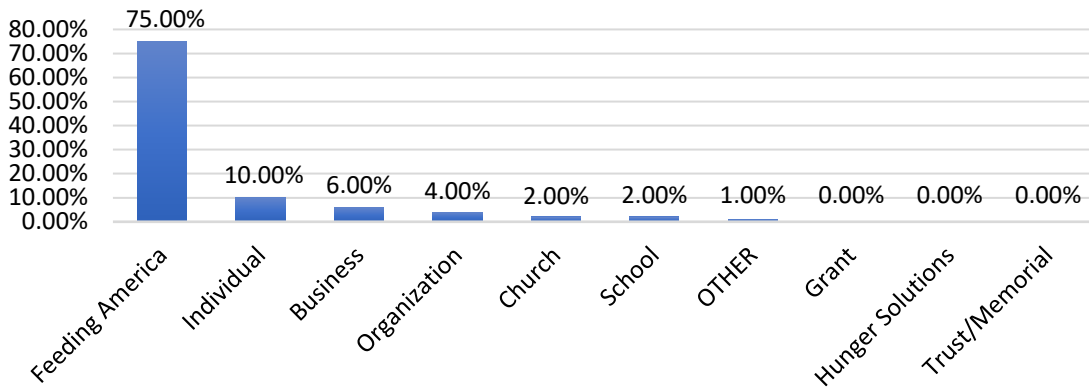
2022 DONATION SUMMARY

In partnership with the Feeding America Food Rescue Program eight (8) community grocers across the county coordinate with MEFS. This coordination supported a robust food rescue program where more than 384,200 pounds of food were gleaned through by grocery staff, transported to MEFS distribution sites, and safely entered the MEFS food stream for re-distribution. In 2022, 75% of food donated to MEFS was a direct result of these rescue efforts.

Without the daily support of grocery store staff and MEFS volunteer drivers, the food rescue program would not exist and fresh and varied options found on MEFS shelves would be extremely limited. MEFS Food Rescue partners include:

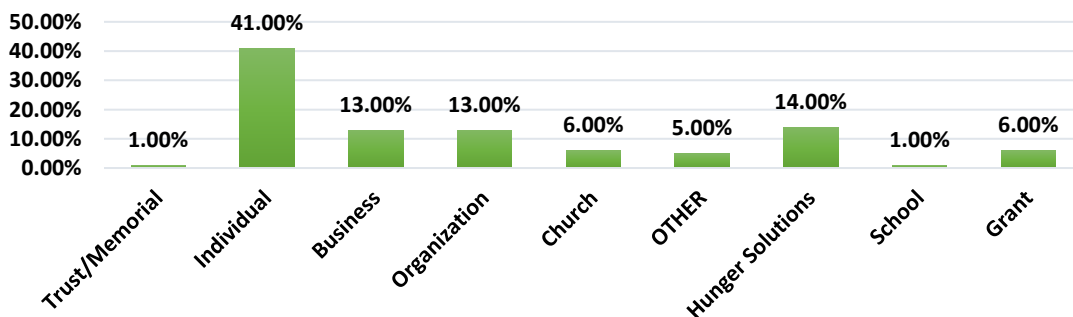


Food Support by Donor Category



The generous financial contributions from individuals, businesses, organizations, churches, schools, as well as grant funds through Hunger Solutions and Second Harvest Heartland (SHH) allowed food purchases and operational expenses to be made. Additional grant monies totaling \$18,775.00 funded by the Hutchinson Area Community Foundation, Hutchinson Health Foundation, Meeker McLeod Sibley County SHIP program, and a capacity building grant through SHH, provided a 3-door merchandiser cooler, cold-storage shelving, a weekend walk-up cooler, and migrant shopping signage & distribution supplies.

Financial Support by Donor Category



2022 OUTSTANDING OUTCOMES & SIGNIFICANT EVENTS SUMMARY

McLeod Emergency Food Shelf (MEFS) remained committed throughout 2022 **to work toward the elimination of hunger and food insecurity as well as the improvement of health and well-being of our community through equitable access, community education, and advocacy.**

The Glencoe & Hutchinson distributions sites retained both in-person and curbside pick-up service options. Seeing usage trend upward at the start of the year, the full distribution allotment was reduced back to one visit per calendar month February 1. Produce-only visits remained a popular option for the weeks in-between. An average of 890 distributions occurred between the two store fronts each month.

Mobile Outreach – Driving Away Hunger, established in 2020, continued to provide food access across McLeod County with monthly visits (2x's/mo. May-November) at seven designated locations. Distribution goals of at least 3 days of food per person were solidly met at all distribution locations with the organization tracking an average of 6 days of food per person per visit.

MEFS hosted a community open house, April 5, showcasing the newly occupied Glencoe Site. The event was well attended by community members and supported by stakeholders and community partners, including the multimedia department at Ridgewater College, who produced an informational video.

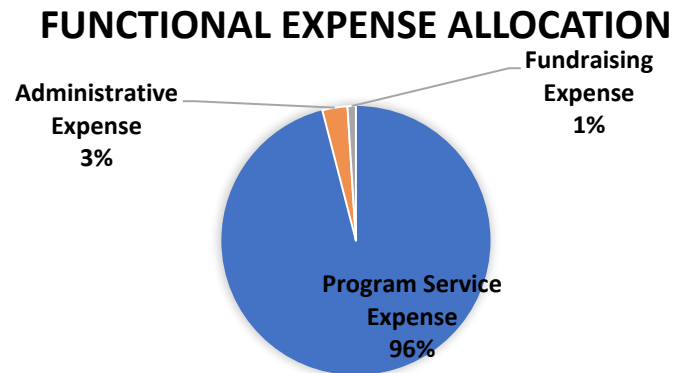
MEFS transitioned to the Heartland Hub ordering and reporting platform with the assistance of Second Harvest Heartland (SHH). This transition paved the way for in-house reconfiguration of data as separate distribution site statistics are now required by SHH. Food rescue statistics are not included in the separation and one set of food rescue data is reported across the organization.

MEFS also focused on building and strengthening community partnerships by partnering with Lutheran Social Services for a pop-up frozen meal distribution one Wednesday each month beginning in January. The Glencoe site also opened office space for Southern Minnesota Regional Legal Services (SMRLS) the 4th Tuesday of each month beginning in June and United Community Action Partnership (UCAP) maintains a regular presence within the site. Salvation Army and the HOMES McLeod committees regularly utilize the conference room at the Glencoe site as well.

One site manager and site assistant, at both the Glencoe & Hutchinson Sites, as well as two Mobile Outreach managers and an on-call floater comprise the MEFS staff roster. Two staff resignations and two new hires were recorded in 2022.

FUNCTIONAL EXPENSE ALLOCATION

MEFS maintains esteemed stewardship of donations, documenting expense allocations at the following rates: 96% Program Service, 3% for Administrative Expense, and 1% for Fundraising Expenses.



2022 FINANCIAL

Reference attached Financial Statement with Accountant's Compilation Report; prepared by SLS, INC., Certified Public Accountants