

# AHSEA PRESENTS

## The Actor's Nightmare



Written By  
Christopher  
Durang



GEORGE SPELVIN WAKES UP TO FIND HIMSELF BACKSTAGE FOR A PLAY, MOMENTS BEFORE IT IS SET TO START. MISTAKEN AS THE LEAD ACTOR'S UNDERSTUDY, GEORGE IS FORCED TO PLAY THE MAIN CHARACTER OF THE PLAY. THE PROBLEM? GEORGE DOES NOT RECAL EVER HAVING BEEN TO A REHERSAL, NOR EVER HAVING BEEN AN ACTOR AT ALL. REGARDLESS OF THESE SET BACKS, THE PLAY MUST GO ON, AND GEORGE MUST MAKE THE BEST OF HIS SITUATION.

### CONTENT WARNINGS:

SFX FLASHES, MATURE LANGUAGE, MENTIONS OF SUICIDE AND DEATH

IN MEMORY OF CHRISTOPHER DURANG  
JAN 2ND 1942 - APRIL 2ND 2024



# CAST

## GEORGE SPELVIN ..... MAX HECK

THIS IS MAX'S LAST PERFORMANCE AT AHSFA AND HE IS VERY EXCITED TO BE ABLE TO WORK WITH SUCH AN AMAZING CAST AND CREW. HE HAS BEEN INVOLVED IN THE THEATRE FOR THE LAST 3 YEARS AND IS GRATEFUL FOR EVERY MOMENT HE HAS HAD. THE RELATIONSHIPS HE HAS BUILT OVER THE LAST THREE YEARS WILL FOREVER RESONATE AND THE ART OF THE THEATRE AT THIS SCHOOL WILL BE MISSED.



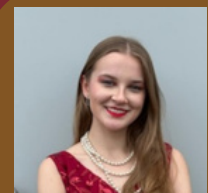
## MEG ..... EMMA CUNNINGHAM

EMMA CUNNINGHAM IS A GRADE TWELVE WHO HAS ALWAYS LOVED PERFORMING IN LIVE THEATRE. SOME OF HER PAST ROLES IN THE ADVANCED ACTING PROGRAM INCLUDE SARAH IN "LOCKDOWN", AND WINIFRED IN "IMPROMPTU". THIS YEAR, ALONGSIDE STAGE MANAGING FOR "SURE THING" AND PLAYING A MEAN VICE PRINCIPAL IN "TICK TALK," EMMA IS THRILLED TO BRING SOME STRESSED OUT STAGE MANAGING ENERGY TO LIFE THROUGH PLAYING MEG IN THIS PRODUCTION OF "THE ACTOR'S NIGHTMARE." THOUGH SHE HOPES TO PURSUE A CAREER IN DENTISTRY, BEING A PART OF COMMUNITY THEATRE IS SOMETHING SHE WANTS TO DO LIFE LONG AS IT HAS BROUGHT HER AN INCREDIBLE AMOUNT OF JOY THROUGHOUT HER HIGH SCHOOL CAREER. SHE ABSOLUTELY CANNOT WAIT TO BE JUST ONE PART OF BRINGING THIS SHOW TO LIFE AND WOULD LIKE TO THANK HER WONDERFUL CAST, CREW, AND DIRECTOR FOR MAKING BEING A PART OF THIS SHOW SUCH AN UNFORGETTABLE EXPERIENCE.



## SARAH SIDDONS ..... MATTHEA SUYKENS

MATTHEA IS A NEW ADDITION TO THIS PROGRAM. SHE LOVES ALL THINGS CREATIVE, WHETHER THAT BE MUSIC, ACTING, OR WRITING. SHE'S BEEN IN 7 PRODUCTIONS THROUGHOUT THE YEARS, SOME OF WHICH INCLUDING "MATILDA THE MUSICAL" AS MRS. PHELPS, "CHICAGO" AS HUNYAK, AND NOW "THE ACTOR'S NIGHTMARE" AS SARA SIDDONS! SHE IS SO EXCITED TO BE A PART OF THIS EXTRAORDINARY PLAY WITH SUCH AN AMAZING CAST AND CREW AND HOPES YOU ENJOY THE SHOW!



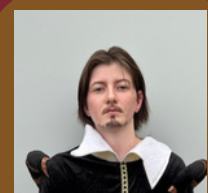
## ELLEN TERRY ..... AVERY BAGGS

AVERY BAGGS IS A GRADE 11 STUDENT. THIS IS HER SECOND YEAR IN ADVANCED ACTING, SHE HAS BEEN IN SHOWS LIKE "I <3 MY COVEN" WHERE SHE PLAYED GRACE AND "CHICAGO". SHE IS VERY EXCITED TO SEE WHAT ELSE ADVANCED ACTING HAS IN STORE FOR HER AND IS LOOKING FORWARD TO MORE PERFORMANCES IN AHSFA.



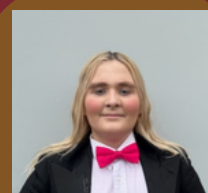
## HENRY IRVING ..... ARIE COOPER

ARIE COOPER IS A STUDENT IN GRADE 12, THAT HAS LOVED THE ART OF ACTING ALL HER LIFE. TAKING PART IN MANY PRODUCTIONS SUCH AS "GIRL" AND "LINDA" IN THE ONE ACT PLAY "CHECK PLEASE!", "TYLER BARNETT" IN "LOCKDOWN", "THE DIRECTOR" IN "WHEN THE DEAD WOMAN SPEAKS," AND NOW AS "HENRY IRVING" IN "THE ACTORS NIGHTMARE." SHE WISHES TO BECOME AN ART PROFESSOR IN THE FUTURE, AND HELPS PAINT SETS FOR PRODUCTIONS BY ALBERTA HIGH SCHOOL OF FINE ARTS. SHE OFTEN PLAYS MALE COMEDIC RELIEF CHARACTERS, AS SHE CAN PLAY THEM WELL AND HAS A TON OF FUN DOING SO. SHE IS VERY PLEASED TO BRING HENRY TO THE STAGE, ALONGSIDE ALL OF HER AMAZING CAST, CREW, AND DIRECTOR.



## VOICE ..... BRADY BELLAND

BRADY BELLAND (GRADE 11) IS AN ASPIRING ACTOR THAT HAS BEEN PARTICIPATING IN THEATRE FOR AS LONG AS HE HAS HAD THE CHANCE. SOME OF BRADY'S ROLES INCLUDE "THE DWARF" IN "THE LION, THE WITCH AND THE WARDROBE", "GOLLUM" AND "SMAUG" IN "THE HOBBIT", AND NOW "THE ANNOUNCER" IN "THE ACTOR'S NIGHTMARE". BRADY ENJOYS ESPECIALLY DRAMATIC OR ANTAGONISTIC ROLES WHEN IT COMES TO HER ACTING CAREER.



## EXECUTIONER..... MAK DOZEMAN

MAK DOZEMAN IS A GRADE 11 STUDENT AT THE ALBERTA HIGH SCHOOL OF FINE ARTS. THIS IS HER FIRST YEAR ATTENDING THE SCHOOL AS WELL AS HER FIRST YEAR IN ADVANCED ACTING. SHE HAS TAKEN PART IN MANY PRODUCTIONS WITH HER SUCH DRAMA FAMILY BASED OUT OF STAVELY ALBERTA, SUCH AS, "SNOW WHITE AND THE SEVEN DWARFS," "RED RIDING HOOD AND THE THREE LITTLE PIGS," AND LAST BUT NOT LEAST "HANSEL AND GRETEL." MAK IS EXCITED TO BE A PART OF A NEW GROUP OF ASPIRING ACTORS, WISHING HER CAST AND CREW THE BEST OF LUCK AND FOR EVERYONE TO ENJOY THE SHOW.

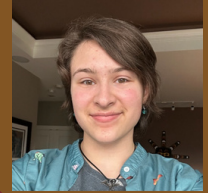


# CREW

DIRECTOR .....SAM LANGENBERGER



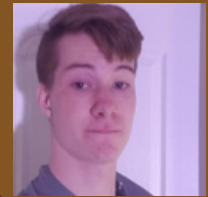
STAGE MANAGER.....SOLEIL GALARNEAU



ASSISTANT STAGE MANAGER..... NEPENTHE HUNT



LIGHTS.....TOM WYZYKOSKI

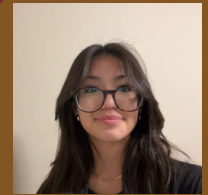


SOUND..... NINA VISSER



BACKSTAGE CREW

MAKAYAH CROWFOOT



**G. & J.D.  
Construction  
Ltd.**



2609 - 19 Ave, Nanton, AB  
403-652-0595

JACK DEGAUST



MADDIE HECK



SPECIAL THANKS

NATASHA HOARE