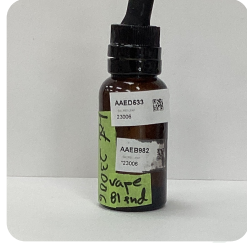




Certificate of Analysis
Compliance Test

SACRED LEAF Batch # 23006 Test Reg State: Florida Production Facility: Sacred Remedy Extracts
3743 W UNIVERSITY AVE Batch Date: 2023-02-09 Production Date: 2023-02-09
GAINESVILLE, FL 32607 Extracted From: Various
Order # SAC230224-010002-RT Sampling Date: 2023-02-24 Initial Gross Weight: 69.039 g
Order Date: 2023-02-24 Lab Batch Date: 2023-02-24
Sample # AAED533 Completion Date: 2023-03-02



Potency
Tested

Product Image

Delta 8/Delta 10 Potency 13 - (LCUV) **Tested**
SOP13.052 (LCUV)

Specimen Weight: 58.860 mg

Analyte	LOD (%)	LOQ (%)	Result (mg/g)	(%)
Delta-8 THC	2.60E-5	0.0015	160.970	16.097
CBC	1.80E-5	0.0015	156.500	15.650
Delta6a10a-THC	8.47E-5	0.0015	144.160	14.416
CBD	5.40E-5	0.0015	19.620	1.962
Delta-10 THC	3.00E-6	0.0015	8.000	0.800
CBN	1.40E-5	0.0015	5.440	0.544
CBDA	1.00E-5	0.0015	<LOQ	<LOQ
CBDV	6.50E-5	0.0015	<LOQ	<LOQ
CBG	2.48E-4	0.0015	<LOQ	<LOQ
CBGA	8.00E-5	0.0015	<LOQ	<LOQ
Delta-9 THC	1.30E-5	0.1	<LOQ	<LOQ
THCA-A	3.20E-5	0.0015	<LOQ	<LOQ
THCV	7.00E-6	0.0015	<LOQ	<LOQ
Total Active CBD			<LOQ	1.962
Total Active THC			<LOQ	<LOQ

Potency Summary

Total Delta 8 16.097% <LOQ	Total Delta 10 0.800% <LOQ
Total Active THC None Detected	Total Active CBD 1.962% <LOQ
Total CBG None Detected	Total CBN 0.544% <LOQ
Other Cannabinoids 30.066% <LOQ	Total Cannabinoids 49.469% <LOQ

Aixia Sun
Aixia Sun Lab Director/Principal Scientist
D.H.Sc., M.Sc., B.Sc., MT (AAB)



Definitions and Abbreviations used in this report: Total Active CBD = CBD + (CBD-A * 0.877), *Total CBDV = CBDV + (CBDVA * 0.87), Total Active THC = THCA-A * 0.877 + Delta 9 THC, Total THC = THCV + (THCVA * 0.87), CBG Total = (CBGA * 0.877) + CBG, CBN Total = (CBNA * 0.877) + CBN, Total CBC = CBC + (CBCA * 0.877), Total THC-O-Acetate = Delta 8 THC-O-Acetate + Delta 9 THC-O-Acetate, Total THCP = Delta8-THCP + Delta9-THCP, Other Cannabinoids Total = Total Cannabinoids - All the listed cannabinoids on the summary section, Total Detected Cannabinoids = Delta6a10a-THC + Delta8-THC + Total CBN + CBT + CBE + Delta8-THCV + Total CBG + Total CBD + Total THCV + CBL + Total THC + Total CBC + Total CBDV + Delta10-THC + Total THC-O-Acetate + Total THCP. (mg/ml) = Milligrams per Milliliter, LOQ = Limit of Quantitation, LOD = Limit of Detection, Dilution = Dilution Factor (ppb) = Parts per Billion, (%) = Percent, (cfu/g) = Colony Forming Unit per Gram (cfu/g) = Colony Forming Unit per Gram, , LOD = Limit of Detection, (µg/g) = Microgram per Gram (ppm) = Parts per Million, (ppm) = (µg/g), (aw) = aw (area ratio) = Area Ratio, (mg/Kg) = Milligram per Kilogram, Passed - Analyte/microbe is non-detected or at the level below the action limit, Failed - Analyte/microbe is at the level that equal or above the action limit, *Measurement of Uncertainty = +/- 10%

This report shall not be reproduced, without written approval, from ACS Laboratory. The results of this report relate only to the material or product analyzed. Test results are confidential unless explicitly waived otherwise. ACS Laboratory is accredited to the ISO/IEC 17025:2017 Standard.