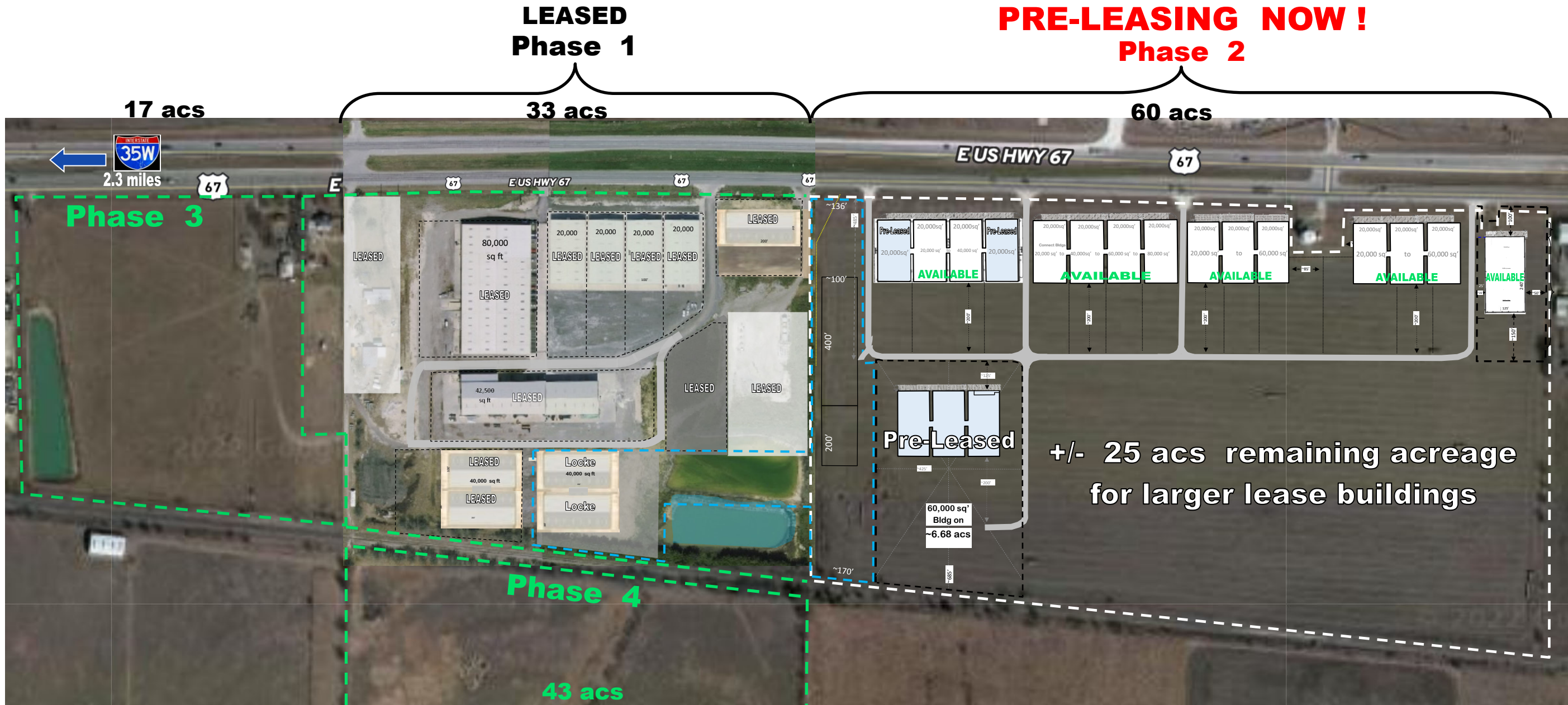


R&A INDUSTRIAL PARK

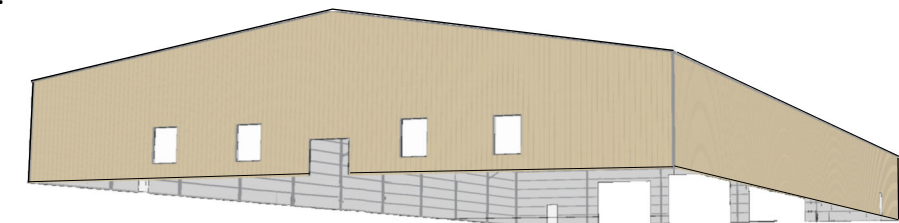
Johnson County (near Alvarado), TX



Occupy within 120 days from Execution of Lease

Multiple building sizes available in Phase 2 and are NOT fixed according to this exhibit.

- **AVAILABLE SPRING OF 2023.**
- Larger lots at rear of site are available for **Larger Buildings.**
- Combine ↻ frontage buildings & lots to meet your company's needs.



Landhold Advisors
 Real Estate Advisory Services
 817.312.3809