

CRESTHAVEN STAMP CLUB NEWS

WEST PALM BEACH, FLORIDA

PALM BEACHES OLDEST AND FRIENDLIEST STAMP CLUB

OCTOBER 2021

© 2021 MAD HATTER MEDIA. ALL RIGHTS RESERVED

APS CRESTHAVEN STAMP CLUB RECRUITING TIP FOR OCTOBER

INVITE A FRIEND TO COME TO A STAMP SHOW OR A CRESTHAVEN STAMP CLUB MEETING (OFFER TO GIVE THEM A RIDE).

THIS MONTHS FEATURED ARTICLE



www.CRESTHAVENSTAMP.CLUB

OCTOBER 2021 TABLE OF CONTENTS

Volume 8, No. 10, Whole No. 88

Page 3: US COAST AND GEODETIC SURVEY by
JUAN RIERA

Page 6: FROM THE PUBLISHER



Page 7: MOTION PICTURE by MICHAEL SWOPE

Page 8: STAMP CLUB NEWS



Page 9: EMILY BISSELL'S CHRISTMAS CARD
SEALS by DAN MADDALINO

ANNOUNCEMENTS

The **SEPTEMBER** stamp club meeting presentation was again provided by Dan Maddalino. His display was from his September News featured article on the USA and International joint issues for the 2007 Polar Year. This complete collection of these joint issues included the scarce Greenland Post souvenir book commemorating this important event.



FloridaStampShows.com

The source for all show
related information for the
state of Florida



INFORMATION YOU NEED

2021 IMPORTANT CLUB CONTACTS

PRESIDENT: BOB BURR
561-267-1903
VICE PRESIDENT: JUAN
RIERA at meeting
SECRETARY: RICHARD
KAYE at meeting
TREASURER: HARRY
CLIFFORD at meeting
WEBMASTER: MICHAEL
SWOPE via
cresthavenstamp.club

MEETINGS 2nd & 4th
TUESDAYS

**ALL MEETINGS
1 PM – 3 PM**

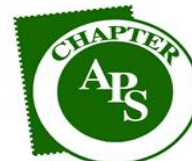
**2605 Barkley Drive West,
West Palm Beach, FL**

**FULL SCHEDULE AT
Cresthavenstamp.club**

ARTICLE & NEWS SUBMISSION

➤ **CALL or EMAIL US:**
You may call me at
561.758.6497.
**Please leave a
message!** Thanks,
Dan.

➤ **EMAIL:**
dmaddalino@aol.com

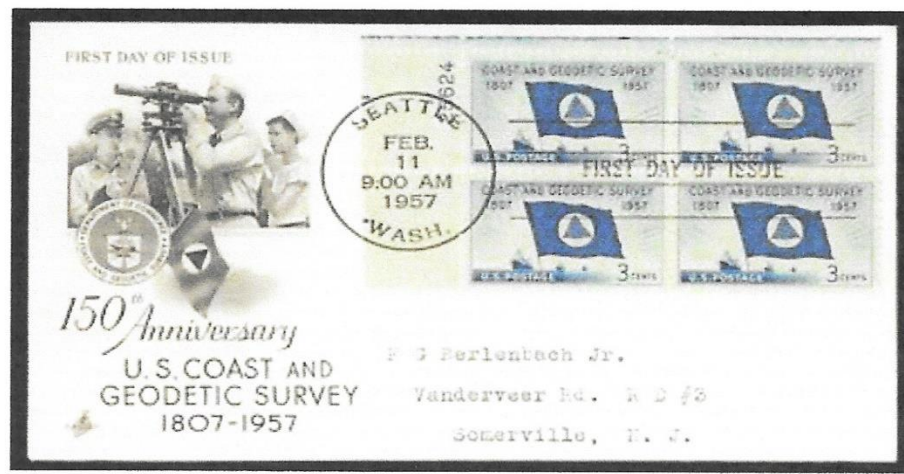


THE U.S. COAST AND GEODETIC SURVEY

JUAN L. RIERA



In the August 2019 issue of *The American Philatelist* there was an article on the U.S. Coast and Geodetic Survey, and the 150th anniversary stamp associated with the organization. I found the article quite fascinating and investigated this governmental agency and how it related to my native state of Florida. As it turns out it dovetails into several of my philatelic interests. as I will show.



To begin with, this organization was a bureaucratic hot potato that had several names and was under several governmental departments during its existence from 1807 to 1970. The organization was established by Thomas Jefferson as U.S. Survey of the Coast (1807-1836) to survey and map waterways for military defense and commerce. It was under the authority of the army for 14 years, under the U.S. Department of Treasury, the U.S. Department of Commerce, and then independent. Once known as the U.S.

Coast Survey (1836-1878) and the U.S. Coast and Geodetic Survey (1878-1970), the organization was merged into the National Oceanographic and Atmospheric Administration in 1970.



Initially the Coast and Geodetic Survey did not have the authority to own its own vessels, so the U.S. Revenue Service (USRS), and the navy, acquired vessels on behalf of the Survey and assigned officers to manage the vessels. Eventually this glitch was rectified and at one point the Survey had 17 research vessels, and during the Civil War, Spanish-American War and both World Wars lent officers to various branches and units of the military. During the Civil War, survey employees, except for 7, went with the Union Army and Navy supporting the Blocking Squadron and Rear Admiral David G. Farragut. During the Spanish-American War (April to August 1898), navy officers were withdrawn from USC&GS. On May 22, 1917, a new Coast & Geodetic Survey Corps was established giving the officers a commissioned status (so as not to be killed as spies if captured). During World War I they served as artillery orienting officers, mine laying officers in the North Sea, troop transport navigators, as intelligence officers, and on the staff of General John Pershing. In 1933 the Survey opened a ship base in Norfolk, Virginia. From 1934 to 1937 survey parties were dispatched and field offices established to employ 10,000 people, including many unemployed engineers at the height of the Great Depression. During World War II many of these same functions as during World War I were carried out, as well as producing vast quantities of maps for the war effort.



In August of 1839, the USRS Washington commanded by Lt. Thomas R. Gedney, conducting sounding surveys for the Coast Survey off Long Island, intercepted the slave ship *La Amistad*.



Alexander Dallas Bache (July 19, 1806 to Feb. 17, 1867) was a physicist, scientist, and surveyor. He erected coastal fortifications as an army engineer. He was head of the Coastal Survey for 24 years as superintendent from 1843 until

his death in 1867. He expanded the work of the coast survey into the Florida Keys. In 1846 the survey began to operate a ship, the USCS Phoenix (1845-1857) on the US Gulf Coast. In 1845 Bache instituted the world's first systematic oceanographic project for studying a specific phenomenon: The Gulf Stream and its environs. The famous naturalist Louis Agassiz (1807-1873) conducted the 1st scientific study of the Florida reef system in 1851 under a Coast Survey commission. The Pillsbury current meter was invented by John E. Pillsbury of the US Navy, while on Duty with the Survey in connection with intensive studies of the Gulfstream.

In the 1850s the Coast Survey conducted surveys and measurements in support of efforts to reform the Department of Treasury's Lighthouse establishment and briefly employed the artist James McNeill Whistler as a draughtsman in 1854-1855. He was a West Point graduate.

The USC&GS George S. Blake made an appearance at the World's Columbian Exposition and is one of two U.S. vessels with names inscribed on the façade of the oceanographic museum in Monaco for her being "The most innovative oceanographic vessel of the nineteenth century". It was a schooner in service from 1874 to January 1905. The other vessel was the US Fish Commission steamer Albatross.

Under the Air Commerce Act (in effect starting May 20, 1926), airways of the U.S. were to be chartered for the first time by USC&GS. []



FLORIDA POSTAL HISTORY SOCIETY

ON THE WEB AT FPHOnline.com

ESTABLISHED 1978

Do you have an interest in Florida Postal History? Then check out our website for a wealth of information covering a wide selection of Florida history. Look us up or see Juan for info.

FROM THE PUBLISHER ...

DAN MADDALINO dmaddalino@aol.com



October is home to two of my favorite events: Halloween and the annual Fall West Palm Beach Stamp and Postcard Show.

Halloween has been a fun holiday all through my youth, my parenting years, and now my Great Grandparenting years. The USPS took its time, but finally got into the “spirit” of things by including Halloween themed stamps of late. This publication won a GOLD award from the APS mostly based on our Halloween Issue in 2015. Also, the Trick-or-Treat bags we gave away that year (stamp filled) were welcomed. We may do it again someday.

October 23 is arriving soon. This is the date (Saturday) of the Cresthaven Stamp Club Fall West Palm Beach Stamp and Postcard Show. It has been well publicized and anticipated by many local and state-wide philatelists. If you have not yet volunteered for one of our action committees, please do so now. Contact Bob Burr, and he will steer you to where help is still needed. The areas of service are in Show set up (Friday evening before the show), Directional Street Signage placement (Friday night or Saturday early), Show Registration and Greeter tables, Show close and clean-up to name a few. Thank you if you have already joined the crew.

October also closes out the annual Articles of Distinction program for 2021. This is our seventh year and we have had outstanding participation. The list of articles receiving nominations will appear in the November issue of the News. Voting for the awards will take place during the December 14 stamp club meeting. You must be present to vote for your favorite article of 2021. Then, after all input is received, the winners will be announced and awarded during the Annual Club Holiday Luncheon on January 25, 2022. Plan now to be part of this annual social activity. It is the only meeting of the year that we leave our stamps at home. More information will appear next month.

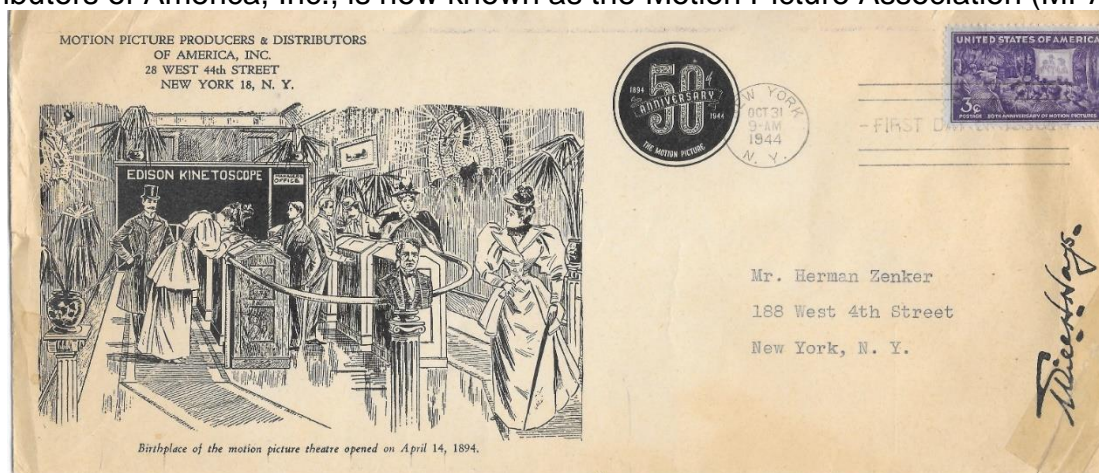


Philatelic Memorabilia

The Motion Picture

Michael Swope

Featured here is a Motion Picture Producers and Distributors of America cachet, first day cover of the 50th anniversary of Motion Pictures. The Scott #926 stamped cover is postmarked October 31, 1944. at New York, N.Y. The Motion Picture Producers and Distributors of America, Inc., is now known as the Motion Picture Association (MPA).



What brought my attention to this anniversary first day cover is the free verse soliloquy, of unknown origin, printed on the back of the envelope:

*"One stands on a high mountain and sees long lines of men, women, and children moving slowly forward. They come from everywhere. They are rosy-cheeked girls from the farms, and their paler-faced sisters from the cities whose feet ache from long hours of standing behind bargain counters. There are plow boys, and sons of millionaires, and boys with the sallow cheeks of the tenements. There are old women with hands reddened and coarsened by work, and with eyes grown listless with long waiting. There are old men who hobble on crooked sticks, and children with the flash of the sun's gold in their hair and the happy laughter of innocence in their voices. There are the schoolboy, and the savant, and the man of no learning at all. There are men and women of every race and of every tongue, moving slowly forward, seeking something, seeking, reaching, yearning - asking for a place to dream. All about them is the roar of the cities, the confused, jangling noises of life that is hurried, rushed, propelled forward at a breathless speed. Every minute of every hour of every day they come - millions of them. And over and above them, and in front of them, attracting them on, offering that which they desire, are billions of flickering shadows - **the motion picture**. Who shall estimate its importance? Who shall attempt to say what it means to the world?"*

Ref: www.motionpictures.org

STAMP CLUB NEWS



FLOREX 2021

DECEMBER 3, 4, and 5. See page 11

WEST PALM BEACH STAMP AND POSTCARD SHOW OCTOBER 23, 2021

ATTENTION ALL CRESTHAVEN STAMP CLUB MEMBERS:

Your 2022 annual dues deadline is approaching. ALL memberships expire on December 31, unless paid prior to that date. Please see Bob Burr or Harry Clifford to secure your place in 2022. Cash only, no checks. Thank you.

NOVEMBER ISSUE OF THE CLUB NEWS will list the 2021 Article of Distinction Nominees. It's been a great year for article submissions. Voting will take place at the December 14 club meeting. See "From the Publisher" column in this issue for more information.

Your club is soliciting for DOOR PRIZES for 2022. Please consider donating some of your GOOD STUFF for the promotion of your club. Please see Bob or Dan to receive your PHILATELIC donations.

EMILY BISSELL'S "CHRISTMAS CARD SEALS"

DAN MADDALINO

Emily Bissell (1861 – 1948), of Wilmington, Delaware, was an experienced and successful charity fundraiser, when approached by a family member for help in saving a financially failing local sanatorium (Tuberculosis hospital). In 1907, when Bissell was recruited to help save this sanatorium, tuberculosis (TB) was the leading cause of death for all ages in the United States. These special isolation facilities were showing great success with treating TB. However, these facilities relied on cash donations to operate.

In 1904 a new organization was formed specifically to assist in the fight against TB in America: The Lung Association. Today, we know it as the American Lung Association, dedicated to fighting all lung diseases. The American organization modeled itself after European charities, also fighting TB on their Continent. Bissell naturally turned to them for inspiration. Denmark had a very successful fundraising campaign dating back to 1904. They sold envelope sealers (closing the fold) at their Post Offices, to be affixed to outgoing mail. So, envelope sealer it would be.



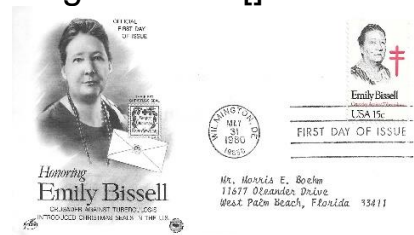
Denmark 1904

Emily Bissell was only requested to raise \$300 to save the hospital. So, she made a simple design for her envelope sealer, and due to the season, she designed it to tie in with Christmas and the New Year. With her fundraising connections and support from the American Lung Association she gained permission to sell the seals at local post offices. They went on sale and were a huge success. The public not only used her seals to close the flaps on Christmas cards, but also to decorate their seasonal mail. Bissell raised thousands of dollars to save the hospital and fight TB.



First US Seal 1907

On May 31, 1980, the USPS released a 15 cents commemorative stamp (Sc #1823) featuring Emily Bissell and the symbol for the fight against TB. Christmas seals, as they are now called, continue to raise funds to fight lung disease. []



First Day Cover May 31, 1980



US Booklet Pane from 1930

CRESTHAVEN STAMP CLUB

WEST PALM BEACH, FLORIDA

2022 MEETING SCHEDULE

ALL MEETINGS START AT 1:00 PM

WE MEET: 2605 Barkley Drive West, West Palm Beach, FL

JANUARY 11 MEMBERS MEETING
JANUARY 25 HOLIDAY LUNCHEON

JULY 12 MEMBERS MEETING
JULY 26 TRADING SESSION

FEBRUARY 8 MEMBERS MEETING
FEBRUARY 22 TRADING SESSION

AUGUST 9 MEMBERS MEETING
AUGUST 23 TRADING SESSION

MARCH 8 MEMBERS MEETING
MARCH STAMP SHOW
MARCH 22 TRADING SESSION

SEPTEMBER 13 MEMBERS MEETING
SEPTEMBER 27 TRADING SESSION

APRIL 12 MEMBERS MEETING
APRIL 26 TRADING SESSION

OCTOBER 11 MEMBERS MEETING
OCTOBER STAMP SHOW
OCTOBER 25 TRADING SESSION

MAY 10 MEMBERS MEETING
MAY 24 TRADING SESSION

NOVEMBER 8 MEMBERS MEETING
NOVEMBER 22 TRADING SESSION

JUNE 14 MEMBERS MEETING
JUNE 28 TRADING SESSION

DECEMBER 13 MEMBERS MEETING
DECEMBER 27 TRADING SESSION

PALM BEACHES OLDEST AND FRIENDLIEST STAMP CLUB

FOUNDED 1970

Cresthavenstamp.club

PHILATELIC AUCTION AT EVERY MEETING

*The Florida Stamp Dealers' Association and the Central Florida Stamp Club
Present*

FLOREX 2021

The Florida State Stamp Show -- a WSP event!

Osceola Heritage Park

Events Center – Hall B

1901 Chief Osceola Trail, Kissimmee FL 34744

e-mail: show@FLOREXStampShow.com

Friday, December 3rd - 10:00 AM - 5:00 PM

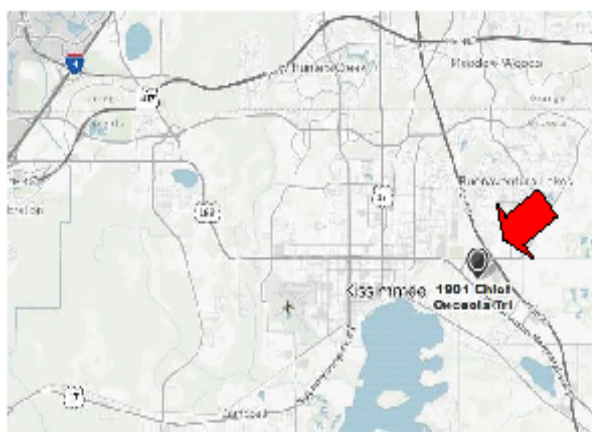
Saturday, December 4th - 10:00 AM - 5:00 PM

Sunday, December 5th - 10:00 AM - 3:00 PM

POSTAGE STAMPS FOR COLLECTORS

Up to 40 Dealers (53 booths) to Buy - Sell -Trade

- Free Admission & Parking
- Door Prizes
- United States Post Office
- American Philatelic Society
- Show Cancel & Cachet
(Honoring the COVID-19 Heroes)
- Free Stamps for Kids
- Youth Area
- Show Program
- Exhibition of up to 3,200 pages
- Societies



For more information:

www.FLOREXStampShow.com



Southeastern Stamp Expo

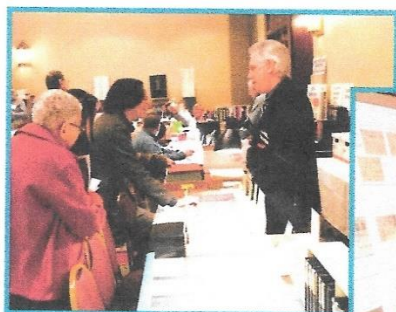
JANUARY 28 - 30, 2022

10:00am - 5:30pm Friday & Saturday

10:00am - 3pm Sunday

World Series of Philately Show

20+ Dealers | 140 Frames of Exhibits | Seminars | Awards



Admission: Just \$5 for the whole family,
all weekend (Includes free Raffle ticket)

Hilton Atlanta Northeast

5993 Peachtree Industrial Blvd
Peachtree Corners, GA 30092

www.sefsc.org - sestampexpo@gmail.com



www.facebook.com/SEStampExpo



[@SEStampExpo](https://twitter.com/SEStampExpo)

