

TEXAS MUSIC EDUCATORS ASSOCIATION

Presents

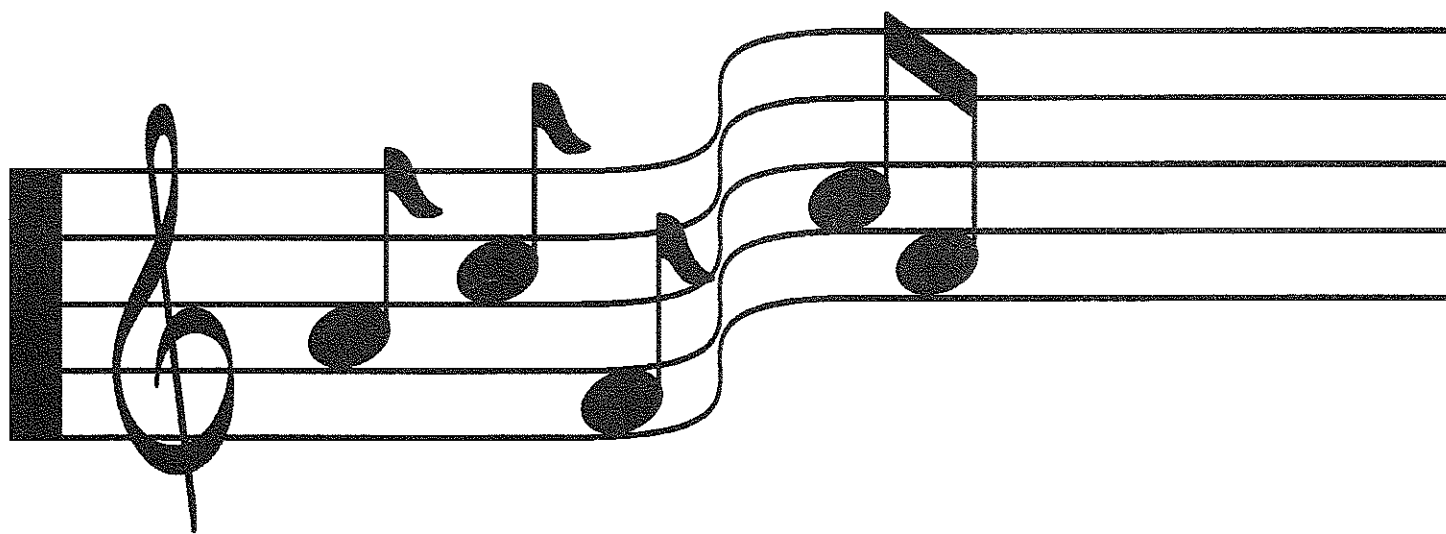
THE 2001

TEXAS COMMUNITY COLLEGE

BAND DIRECTORS ASSOCIATION

ALL-STATE

JAZZ ENSEMBLE AND SYMPHONIC BAND



FEBRUARY 10, 2001

Henry B. Gonzales Convention Center - Room 214-A, B, C, D

San Antonio, Texas

JAZZ ENSEMBLE ... 12:00 p.m.

SYMPHONIC BAND ... 2:00 p.m.

The 2001 Texas Community College All-State JAZZ ENSEMBLE

Curt Wilson, Director
Texas Christian University

Program to be selected from:

| | |
|--|---|
| Payin' Those Bass Playin' Dues Blues | David Metzger |
| Polka Dots and Moonbeans..... | Jimmy Van Heusen, Johnny Burke arr. Bill Holman |
| Well You Needn't | Thelonious Monk arr. Mark Taylor |
| Doxy | Sonny Rollins arr. Jim Martin |
| Tree Frog | Bill Holman |
| Bluesin' Gold | Bill Zaccagni |
| Dear Old Stockholm | arr. Jim Martin |
| Long in the Tooth | Frank Mantooth |
| Let's Face the Music and Dance | Irving Berlin arr. Mike Tomaro |
| A Pat on the Back | David Springfield |
| Rhythm-a-ning | Thelonious Monk arr. Paul McKee |
| My Romance | arr. Cal Lewiston |
| Zip-a-dee-doo-dah-dit! | arr. Curt Wilson |

CURT WILSON

Curt Wilson serves as Director of Jazz Studies and Professor of Music at Texas Christian University. Professor Wilson has been at TCU since 1976. Prior to that he served as Director of Bands at Ashland College; Ashland Ohio (1972-1976). From 1968-1972 he was on the music faculty of Valley City State College; Valley City, North Dakota. As a professional woodwind performer he has played with Fred Waring and the Pennsylvanians, Glenn Miller-Tex Beneke Orchestra, and many others. His conducting experience ranges from marching band to the Fort Worth Chamber Orchestra. He has music published for marching band, symphonic band, and jazz ensemble. The TCU Jazz Ensemble has performed twice at the Montreux Jazz Festival in Montreux, Switzerland. The group has also performed in Austria, Hungary, Poland, and the Soviet Union.

Special thanks to Tim Doherty, Temple College-Jazz Organizer; and all directors and applied faculty members who judged the audition tapes.

PERCUSSION ENSEMBLE

Jeremy Kushner, Conductor
Laredo College

Program to be selected from:

October Mountain Alan Hovhaness
Samba No. 3 Ney Rosauaro

JEREMY KUSHNER

Jeremy Kushner is currently Instructor of Percussion and Director of the Campus Band at Laredo Community College. He earned degrees from the University of South Florida, Stephen F. Austin State University, and is a candidate for the D.M.A. in Percussion Performance at Arizona State University. He performs frequently as a soloist and as Principal Timpanist with the Laredo Philharmonic Orchestra. His teachers have included J.B. Smith, Cloyd Duff, Mark Sunkett, Chris Hanning, Robert McCormick and Godwin Agbeli.

SYMPHONIC BAND

Michael Haithcock, Conductor
Baylor University

Program to be selected from:

Fanfares and Flourishes James Curnow
Second Suite in F Gustav Holst
Wedding Dances Daron Aric Hagen
orch. Mark Spede
"Carmen" Fantasy Francois Borne
arr. R. Mark Rogers
Julie Plaivech, Del Mar College, soloist
Irish Tune from County Derry Percy Aldridge Grainger
ed. R. Mark Rogers
"The Gum-Suckers" March Percy Aldridge Grainger
ed. R. Mark Rogers

MICHAEL HAITHCOCK

Michael Haithcock was appointed Director of Bands at Baylor University in 1982. As Director of Bands and Professor of Conducting, Mr. Haithcock conducts the internationally acclaimed Baylor Wind Ensemble and is responsible for the graduate program in Wind Conducting as well as the administration of Baylor's diverse collegiate band program. Professor Haithcock received the 1993-1994 Baylor University Outstanding Creative Artist Award in recognition of his artistic leadership and achievement. Under Haithcock's guidance, the Baylor Wind Ensemble has received a wide array of critical support for its high artistic standards of performance and repertoire. In 1999 he was selected to conduct the world premiere of Daron Hagen's *Bandanna*, an opera for voices and wind band, commissioned by the College Band Directors National Association. Active in commissioning and premiering new works, Haithcock has earned the praise of both composers and conductors for his innovative approaches to developing the wind ensemble repertoire. A graduate of East Carolina University (where he received the 1996 Outstanding Alumni Award from the School of Music) and Baylor University, Professor Haithcock has done additional study at a variety of conducting workshops including the Herbert Blomstedt Orchestral Conducting Institute. His articles on conducting and wind literature have been published by *The Instrumentalist*, *School Musician*, *Southwest Music Educator*, and *WINDS* magazine. Mr. Haithcock is active in a variety of professional organizations including the music honor society Pi Kappa Lambda, the American Bandmasters Association, the College Band Directors National Association (National President-Elect), the Conductors Guild, the Music Educators National Conference, the Texas Music Educators Association, and the World Association of Symphonic Bands and Wind Ensembles.

Special thanks to Dr. Stephen Crawford, Temple College - Student Selection Chair; Jill Stewart, Blinn College - Music Organizer; Jeremy Kushner, Laredo College - Percussion Organizer; Kyle Viertel, Cisco College - Symphonic Band Organizer; Mike McGowan, Panola College - Audition Chair; and all directors and applied faculty members who judged the audition tapes and chair tryouts.

2001 TEXAS COMMUNITY COLLEGE ALL-STATE SYMPHONIC BAND

PICCOLO

Lisa Lance Del Mar College

FLUTE

Julie Plaivech Del Mar College
 Heidi Waggoner Blinn College
 Leslie Avery San Jacinto Central
 Kathryn Brown San Jacinto North
 Erin Kutschbach Temple College
 Ashley Van Hooser Kilgore College
 Celeste Silva Blinn College
 Rachel Hohlt Blinn College
 Mindy Howell Tyler Jr. College
 Kimberly Engle Tyler Jr. College
 Julia Aguilar Temple College

OBOE

Christina Feronberg North Harris College

E♭ CLARINET

Daniel Stover San Jacinto Central

B♭ CLARINET

Susan Craig Lee College
 Javier Cuellar San Jacinto North
 Maree Clayton San Jacinto Central
 Francisca Melendez McLennan Com. College
 Rebecca Ruddock Blinn College
 Raymond Dominguez Victoria College
 Kim Cheatham San Jacinto Central
 Michele James Tyler Jr. College
 Susie Peveler Panola College
 Lindsay Dixon Trinity Valley Com. College
 Ryan McDonald McLennan Com. College
 Stephanie Salazar McLennan Com. College
 Joel Bernal Blinn College
 Gerrie De Vries Tyler Jr. College
 Terri Ann Gilbert San Jacinto Central
 JC Welton Blinn College
 Jessica Hannish Blinn College
 Amy Conley McLennan Com. College
 Mary Gant McLennan Com. College
 Guadalupe Isaac San Jacinto North
 Sharon McElwee Del Mar College
 Tessa Pechal Blinn College
 Amber Friday Panola College

BASS CLARINET

Kanetra Hights Blinn College
 Callie Rothe Blinn College
 Amber Turner College of the Mainland

E♭ CONTRA CLARINET

Tammy Duke Panola College

ALTO SAXOPHONE

Ben Soils Blinn College
 Ray Gonzalez San Jacinto Central
 Cesar Seymour San Jacinto North
 Scott Loewen Blinn College

TENOR SAXOPHONE

Kurt Schafer San Jacinto Central

BARITONE SAXOPHONE

Marcos Gomez South Plains College

TRUMPET

Steve Garcia Del Mar College
 Jamie Blunt Blinn College
 Ethan Whitlow Kilgore College
 Cody Patterson San Jacinto North
 Kennon Silence North Harris
 Juan Padilla Del Mar College
 Donald Baiter Blinn College
 James Bogs Panola College
 Adam Robinson South Plains College
 Brandon Kelly Blinn College
 Agapito Aguilar Blinn College
 Ron Obenhaus Blinn College

FRENCH HORN

Christina Mason San Jacinto North
 Laura Villarreal Tyler Jr. College
 Mike Estrada Blinn College
 Pamela Walton Panola College
 Stephanie Michaelis Blinn College
 Kellie Bullington North Harris College
 Stephanie Dyer Blinn College
 Kerri Bohr Alvin Com. College

TENOR TROMBONE

Jack Pitcock Lee College
 Johnathan Johnson Tyler Jr. College
 Robert Crowl North Harris College
 Lindsay Lovas Blinn College
 Donald O'Dell San Antonio College
 Lee Esch North Harris College

BASS TROMBONE

Scott Smith Tyler Jr. College
 Brian Ingleburger North Harris College

EUPHONIUM

Brent Laudgrebe Victoria College
 Thomas Darst North Harris College
 Ruben Garcia Blinn College
 Joey Scarbrough Navarro College

TUBA

Adam Helms Blinn College
 Mike Lenarduzzi Del Mar College
 Saul Guerrero Temple College
 Craig Reinecke Blinn College
 Eric Brown Alvin Community College
 Chris Lowes Blinn College

PERCUSSION

Victor Gonzalez Del Mar College
 Kenny Peters Blinn College
 Jason Johnson Blinn College
 Mark Mertins Temple College
 Brian Straw Navarro College
 Jimmy Shanks Howard College

2001 TEXAS COMMUNITY COLLEGE ALL-STATE JAZZ BAND

SAXOPHONE

Alto 1 Jeremy Valadez, Palo Alto College
 Alto 2 Patrick Walsh, Temple College
 Tenor 1 Rodney Howell, Temple College
 Tenor 2 Will Watson, Blinn College
 Bari Robert Eaton, Del Mar College

TRUMPET

Lead Chad Willis, Brazosport College
 2nd Aaron Koerner, College of the Mainland
 3rd Craig Bursleson, Alvin Community College
 4th Ryan Crane, Temple College
 5th Luis Garcia, North Harris Comm. College

TROMBONE

Lead Thomas Nieto, Blinn College
 2nd Robert Babb, South Plains College
 3rd Michael Cason, South Plains College
 Bass Terry Timberlake, Temple College

GUITAR

Jason Valdez, Palo Alto College

PIANO

Steven Serrata, Del Mar College

BASS

Daniel Rhodes, Brazosport College

DRUMS

Michael Morris, Temple College

PERCUSSION

Thomas Jimenez, Palo Alto College