



## 1030 CAMBRIDGE SQUARE, SUITE "A"

### GENERAL INFORMATION

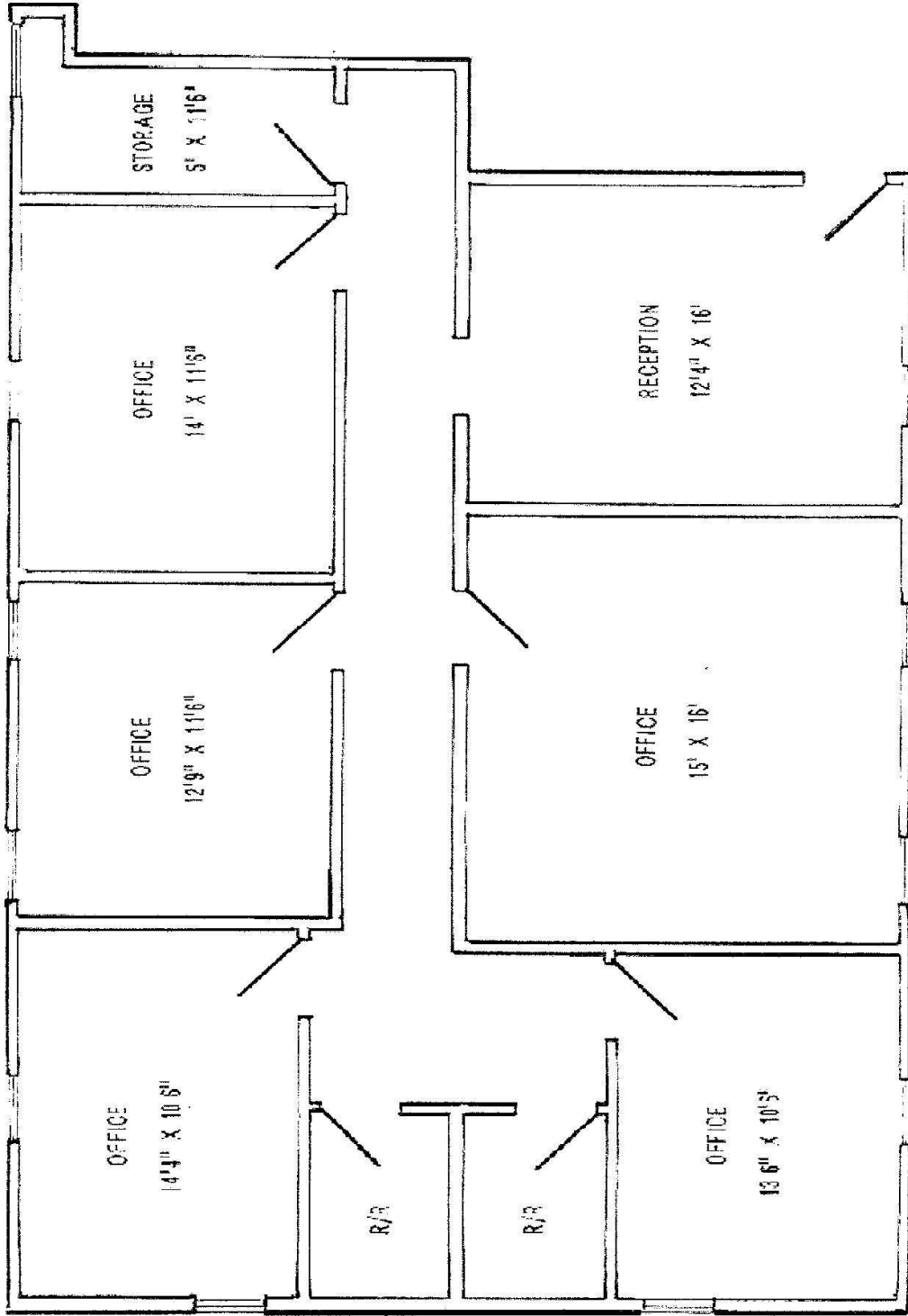
SIZE	AVAILABLE	RENT	MIN. LEASE TERM	ESCALATION
1500 Sq. Ft. First Floor	Immediate	<b>\$1,999.00 per month</b>	2 Years	3% Annually
<b><i>PREMIUM FIRST FLOOR OFFICE SUITE - HANDICAP ACCESSIBLE</i></b>				
<b>JUST RENOVATED - HIGH END FINISH</b>				
<b>PRIME LOCATION AT FRONT OF CAMBRIDGE SQUARE OFFICE PARK</b>				
Hi Speed internet available via Comcast Cable or Fibre Optic				
<b>Professional On-Site Management</b>				

**SEE FLOOR PLAN ON REVERSE**

**For more information contact Wayne Giglia, 770-475-8035**

The information contained herein is believed to be accurate but is not warranted.  
All prices and terms subject to change without notice.

ALL DIMENSIONS ARE APPROXIMATE



1030 CAMBRIDGE SQUARE - SUITE "A" 1500 SF