



1030 CAMBRIDGE SQUARE, SUITE “E” GENERAL INFORMATION

SIZE	AVAILABLE	RENT	MIN. LEASE TERM	ESCALATION
3000 Sq. Ft. Ground level	February 2023	\$2,900.00 per month	2 Years	3% Annually
PREMIUM OFFICE SUITE - NEWLY RENOVATED - HIGH END FINISH				
Reception - Conference - 3 Private Offices - Kitchen / Break Room 2 large open areas 2 Private R/R with showers				
GROUND FLOOR HANDICAP ACCESSIBLE				
PRIME LOCATION AT FRONT OF CAMBRIDGE SQUARE OFFICE PARK				
Hi Speed internet available via Comcast Cable / DSL or T1				
Professional On-Site Management				

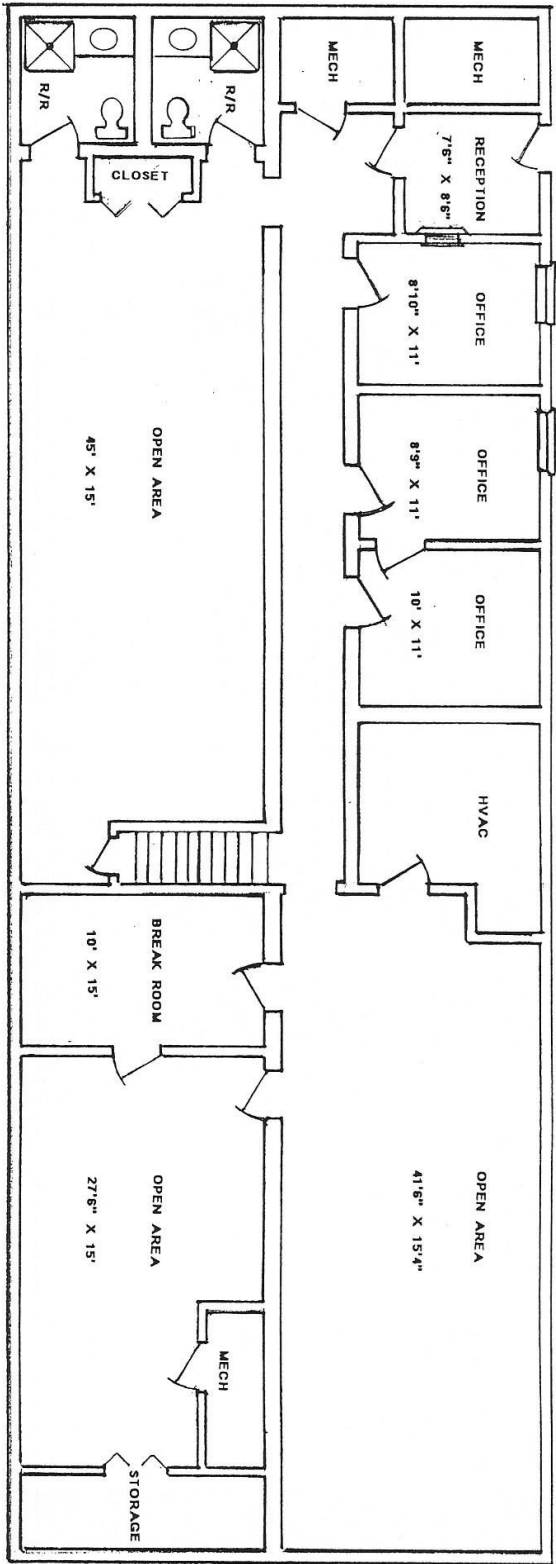
CLICK “NEXT” TO SEE FLOOR PLAN

For more information contact Wayne Giglia, 770-475-8035

The information contained herein is believed to be accurate but is not warranted.
All prices and terms subject to change without notice.

THIS DRAWING PROPERTY OF "THE CAMBRIDGE GROUP, INC." ALL RIGHTS RESERVED

ALL SIZES ARE APPROXIMATE - ACTUAL DIMENSIONS MAY VARY



1030 CAMBRIDGE SQUARE - SUITE "E"

3000 SQ. FT.