



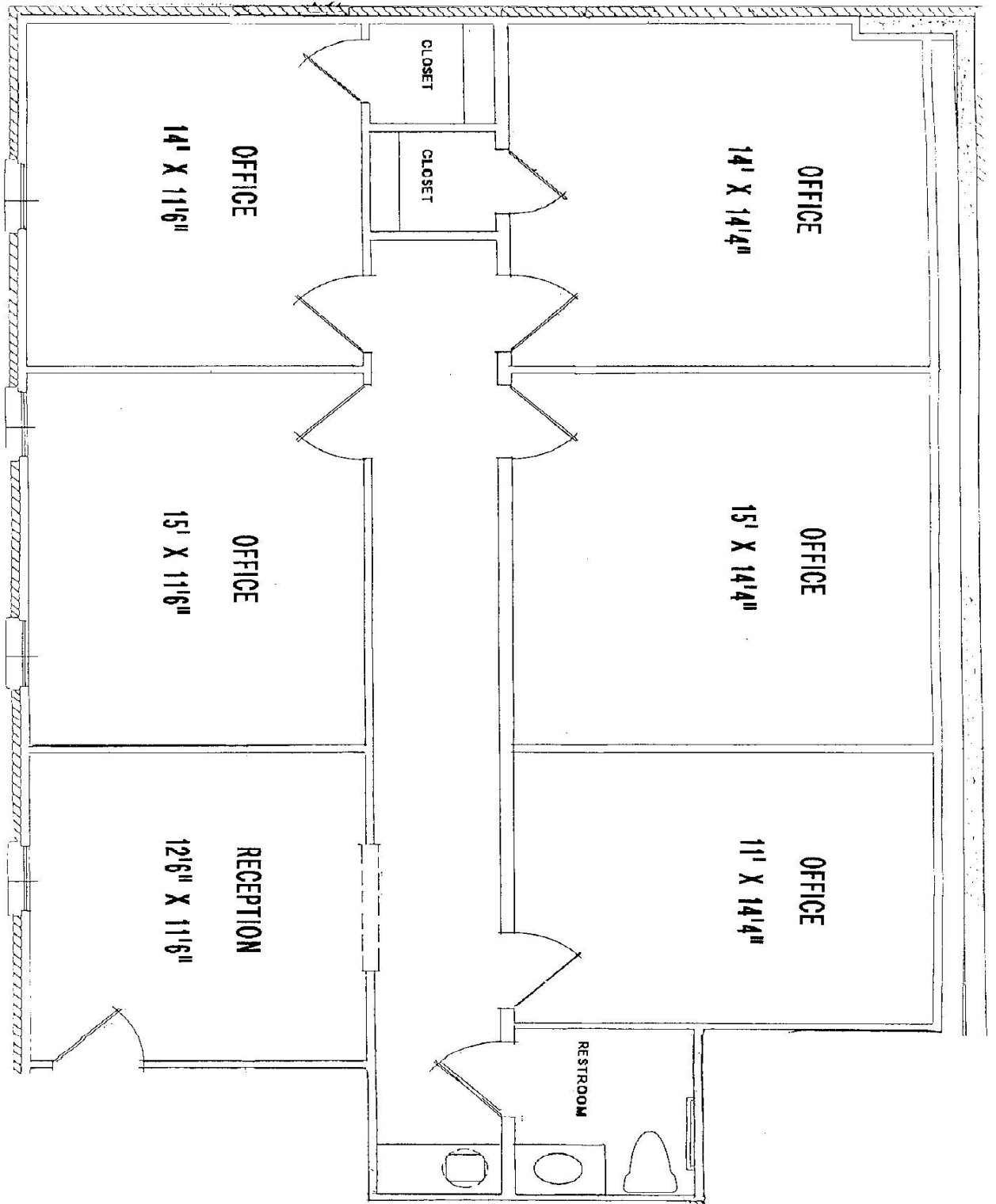
1031 CAMBRIDGE SQUARE, SUITE "F"

GENERAL INFORMATION

SIZE	AVAILABLE	RENT	MIN. LEASE TERM	ESCALATION
1500 Sq. Ft. Ground Floor	Immediate	\$1,650.00/Mo	2 Years	3% Annually
!!!!!!!!!!!! JUST RENOVATED !!!!!!!!!!!!!				
<i>Premium ground floor suite - handicap accessible.</i>				
Suite has its own HVAC system with control located within suite.				
Landlord pays all routine maintenance (HVAC, electric, plumbing) No C.A.M. charge. No "pass through" charges to tenant.				
Hi Speed Internet available - Comcast Cable / Fiber Optic				
<i>Professional On-Site Management</i>				

↓↓↓ **CLICK "NEXT" TO SEE FLOOR PLAN** ↓↓↓

For more information contact Wayne Giglia, 770-475-8035
 The information contained herein is believed to be accurate but is not warranted.
 Prices, terms and availability subject to change without notice.



1031 SUITE "F" - 1500 SF

DIMENSIONS ARE APPROXIMATE - ACTUAL SIZES MAY VARY