



1090 CAMBRIDGE SQUARE, SUITE "C"

GENERAL INFORMATION

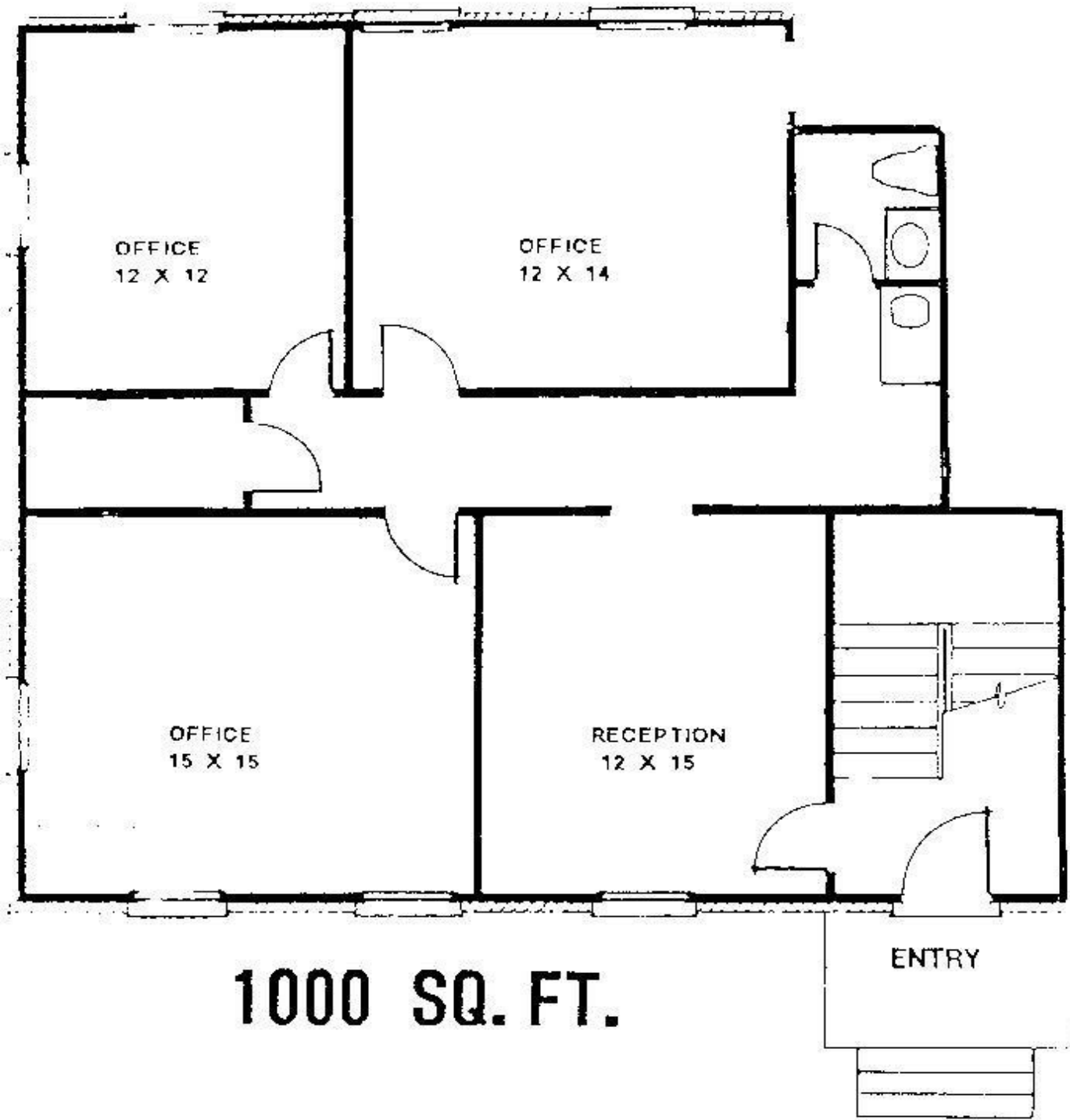
| SIZE | AVAILABLE | RENT | MIN. LEASE TERM | ESCALATION |
|--|------------------|---------------------------------|-----------------|------------------------|
| 1024 Sq. Ft. Second Floor | Immediate | \$1,100.00 per month | 2 Years | 3% Annually |
| Tenant responsible for electric & gas service, suite metered for both | | | | |
| Hi-Speed internet available via Comcast Cable, DSL or T1 | | | | |
| Landlord pays all routine maintenance (HVAC, electric, plumbing) No C.A.M. charge No "pass through" charges to tenant | | | | |
| Professional On-Site Management | | | | |

CLICK "NEXT" TO SEE FLOOR PLAN

For more information contact Wayne Giglia, 770-475-8035

The information contained herein is believed to be accurate but is not warranted.

All prices and terms subject to change without notice.



ALL DIMENSIONS ARE APPROXIMATE - ACTUAL SIZES MAY VARY