



1125 CAMBRIDGE SQUARE, SUITE “E”

GENERAL INFORMATION

SIZE	AVAILABLE	RENT	MIN. LEASE TERM	ESCALATION
1500 Sq. Ft. Ground Floor	Immediate	\$1,350.00 per month	2 Years	3% Annually

NEWLY RENOVATED - HANDICAP ACCESSIBLE

Tenant responsible for electric & gas service, suite metered for both.

Suite has its own HVAC system with control located within suite.

Hi-Speed internet available via Comcast Cable, fiber optic, DSL or T1

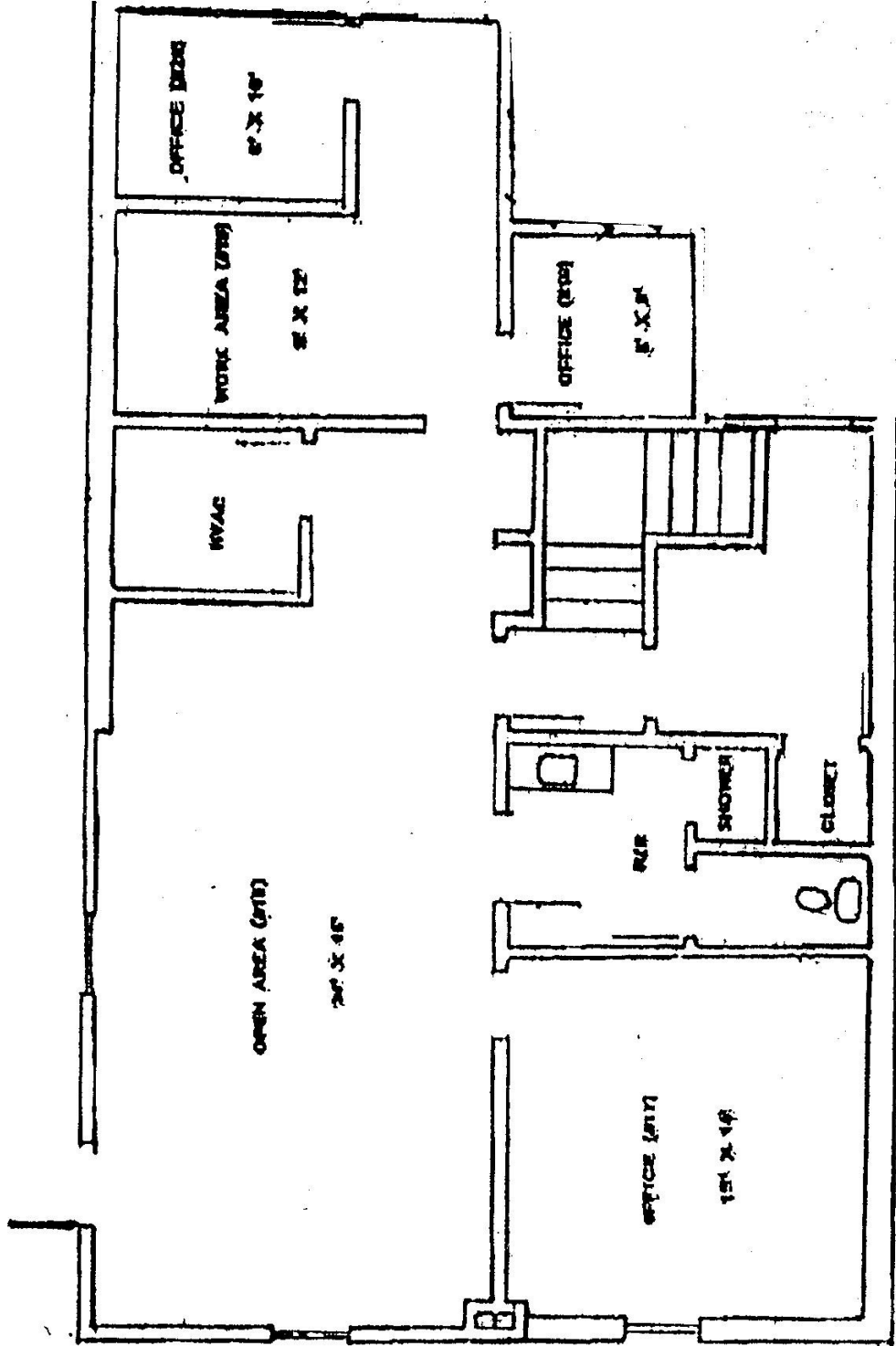
Professional On-Site Management

↓↓↓ CLICK “NEXT” TO SEE FLOOR PLAN ↓↓↓

For more information contact Wayne Giglia, 770-475-8035

The information contained herein is believed to be accurate but is not warranted.
Prices, terms and availability subject to change without notice.

ALL SIZES ARE APPROXIMATE - ACTUAL DIMENSIONS MAY VARY



1125 CAMBRIDGE SQUARE, SUITE "E" 1500 SF