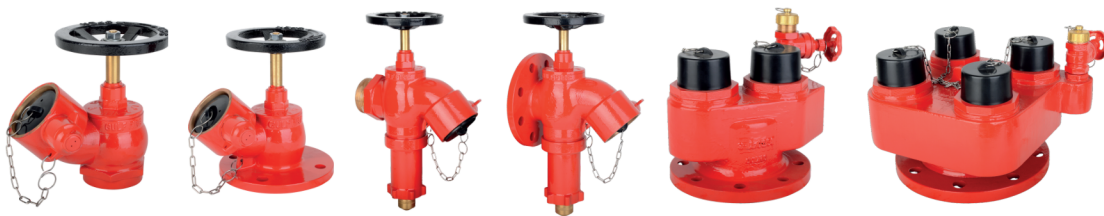




LANDING VALVES & BREECHING INLET CATALOGUE



GULF FIRE FIGHTING EQUIPMENTS FZE
S31118 - South 3 - Jebel Ali Freezone
Dubai, UAE



+971 4880 7127



info@gulffireco.com
gulffireco.com

LANDING VALVES

The **GULF FIRE®** Landing Valves are manufactured according to the specifications of **BS 5041-1:1987** Standard and certified by **BSI** for **Kitemark®**. **GULF FIRE®** Landing Valves are suitable to install in Wet Riser System which have permanent Water supply and also in dry riser system. The inlet of the Landing Valves may be either Screwed or Flanged and the Outlets of all the models will be Female Instantaneous type as per **BS 336:2010**.

Model	Description
GLV-090	Oblique Landing Valve, Inlet Screwed
GLV-091	Oblique Landing Valve, Inlet Flanged



KM 804598

TECHNICAL FEATURES:

Water Flow Rate	8.5 L/s@ Inlet Pressure 4.7 Bar, Outlet Pressure > 4 bar
Nominal Size	65 mm
Max. Working Pressure	15 bar
Test Pressure	Body: 22.5 bar, Valve Seat: 16 bar
Flanged	BS 4504 Part 2: 1974 Table: 16/21
Threaded	BS 21



GLV-090

MATERIALS FOR COMPONENTS:

Parts	Material
Body & Outlet	Copper Alloy, BS 1400, LG2
Bonnet & Disk	Copper Alloy, BS 2872, CZ 122
Stem	Copper Alloy, BS 2874, CZ 121
Handwheel	Grey Cast Iron, BS 1452, Grade 150



GLV-091

PRESSURE REDUCING LANDING VALVE

The **GULF FIRE®** Pressure Regulating Landing Valves are manufactured according to the specifications of **BS 5041-1:1987** Standard and certified by **BSI** for **Kitemark®**. **GULF FIRE®** Pressure Regulating Landing Valves are suitable to install in Wet Riser System which have permanent Water supply. The inlet of the Landing Valves may be either Screwed or Flanged and the Outlet will be Female Instantaneous Type as per **BS 336:2010**.

Model	GPRV-120(Screwed Inlet)	GPRV-121(Flanged Inlet)
Water Flow Rate	8.5 L/s @ Inlet Pressure 4.7 bar, Outlet Pressure > 4 bar	
Nominal Size	65 mm	
Max. Working Pressure	20 bar	
Test Pressure	Body: 30 bar, Valve Seat Test: 22.5 bar	
Flanged Inlet	BS 4504 - 2: 1974 Table: 25/21	
Screwed Inlet	BS 21	
Outlet	Bib-nose Type 2.5" Instantaneous BS 336:2010	



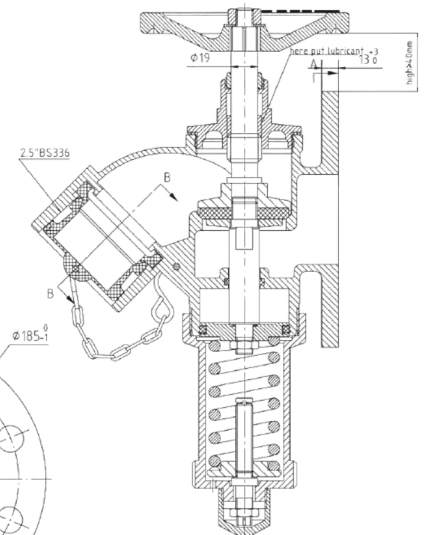
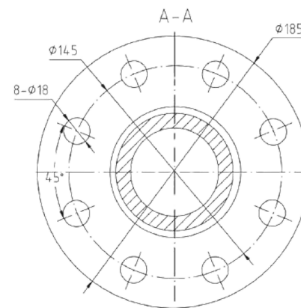
GPRV-120



GPRV-121



KM 804598



MATERIALS FOR COMPONENTS:

Parts	Material
Body & Outlet	Copper Alloy BS 1400, LG2
Bonnet & Disk	Copper Alloy BS 2872, CZ 122
Stem	Copper Alloy BS 2874, CZ 121
Handwheel	Grey Cast Iron BS 1452, Grade 150
Pressure Regulating Spring	Chrome Vanadium Steel BS 970-5 Grade 735 A50

BREECHING INLETS

GULF FIRE® Breeching Inlets are suitable for installation in buildings for fire fighting purposes. The Breeching Inlets are manufactured according to the specifications of **BS 5041-3:1975** Standard and certified by **BSI** for **KITEMARK**. The Male Instantaneous connections do comply with **BS336:2010** and the drain valves comply with **BS 5154 PN 16**.

Model	GF- BI-100	GF-BI-150
Nominal Size	100 mm	150 mm
No. of Inlet Connection	2 Nos.	4 Nos.
Working Pressure	10 bar	
Test Pressure	20 bar	
Flange	BS 4504 PN16	



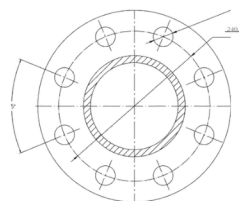
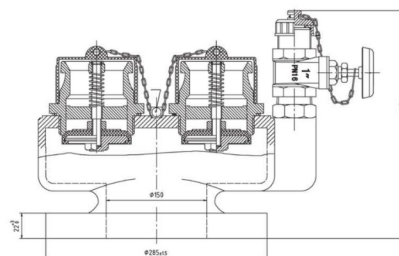
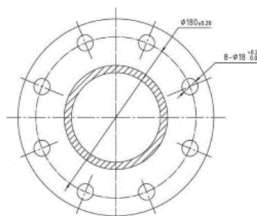
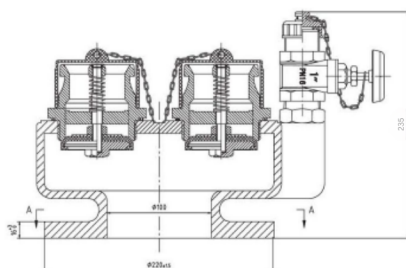
GF-BI-100



KM 804598



GF-BI-150



MATERIALS FOR COMPONENTS:

Parts	Material
Body	Spheroidal Graphite Iron to BS 2789
Valve Facings	Rubber to BS 1154
Inlet Connection & Non- Return Valve	Copper Alloy to BS 2872 grade Z122
Blank Caps for Valve Inlet	Plastic
Drain Valve	Copper Alloy to BS 2878 GRADE 2122