

- Weekly Themes
- Calendar Events
- Student Enrollment Available
- Birthdays



Newsletter February 2019



Eagle's Nest



**CATHERINE'S EARLY LEARNING ACADEMY
2018-2019 IMPORTANT DATES**

HOLIDAY	DATE	STATUS
*President's Day	Monday, February 18	NO VPK
Spring Fundraiser	Monday, March 4-Friday, March 15	
*Spring Break	Monday, March 18-Friday, March 22	NO VPK
Good Friday	Friday, April 19	CLOSED
Last Day of VPK/Graduation	Friday, May 24	
Memorial Day	Monday, May 27	CLOSED

*NON VPK DAYS
VPK HOURS M-F 8:30AM-11:30AM

Greetings Parents!

February is here and with that we have a lot to look forward to. This month we will honor the great men and women that have positively made their mark on our country. We will take a look at historians in Science, Education and Black-Migration from the South to the North. Dental Health week will also be celebrated with a guest speaker coming in to share the importance of taking care of our mouth. We will host our first Parent Nights out on February 15 from 7:00 to 11:00 pm and February 16 from 6:00 to 11:00 pm. The children will have a great time and our parents will enjoy some time alone together. Last but not least, in honor of Presidents Day, the center will be closing at 6:00 pm on Monday, February 18. We would also like to welcome Ms. Kaili and Ms. Luz to the CELA team.

Mrs. Davis, Director

See What's Happening This

Happy Birthday!

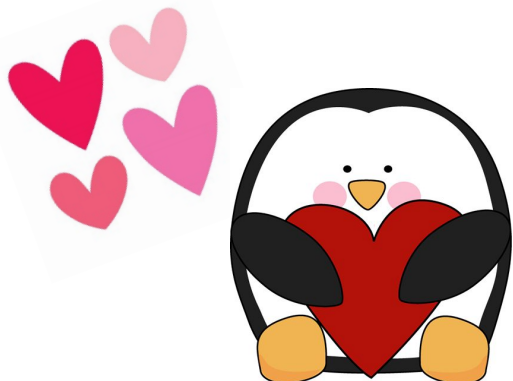
Abel Hernandez 2/10
Jason Saravia 2/17

Happy birthday! Happy birthday!

February 14th
have a rockstar
valentine's day
class party

PRESIDENTS DAY

February 18th
CELA will be closing at 6pm



733 West Lumsden Road Brandon, FL 33511

Ph: 813.324.9083 Fax: 813.324.9140

www.CELAeagles.com

mdavis@CELAeagles.com

JUST A LITTLE Reminder



Daily Cut Off Time

Parents please remember to drop your children off by 9:30am, 10:00am is our cut off time. Please notify us if your child has an appointment or will be coming later as soon as possible. Instruction time begins at 9:30am as well as the lunch count is taken at that time.

Evening and Saturday Care

CELA will only open on Saturday's if there are 5 or more students signed up. Please call on Monday prior to Saturday to schedule your spot. Advanced payment is required. Evening care rates have been changed to an up charge of \$10 per child per evening

Weekly Payments

Payments are due on Monday; Wednesday at 6:00pm the latest. If payments are not made by Wednesday a late fee of \$35 will be added to each account on Thursday morning unless prior arrangements were made.

**Online Payment Link: <https://www.myprocare.com/>
\$5 convenience fee**

Future Leaders

