

# Omakase at Sushi Noguchi

Fish for omakase changes daily

## 1. Hiro's Omakase (Traditional Style Omakase)

Average from \$130-\$170 per person

An omakase with seasonal fish

Includes mostly Sashimi & Nigiri

Chef will serve you the best seasonal selection of the day.

### Tips to enjoy Hiro's Omakase

*Please tell your chef or server your dislikes when you order.*

*Please let us know when you feel 70% full to end your omakase at right time.*

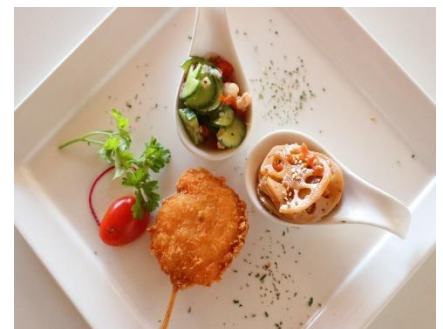


## 2. Jun's Omakase (Fusion Style Omakase)

\$70 per person

Includes pre-fixed courses (5 or 6 courses)

An omakase with standard fish, such as blue fin tuna, salmon, halibut, and so on



## 3. Premium Nigiri Omakase

\$70 Per person

10 Pieces of Premium Sushi and one hand Roll