

Order #:
QTY: 1

**AFW126920 and AFW126924
End of Range Shelving Units**

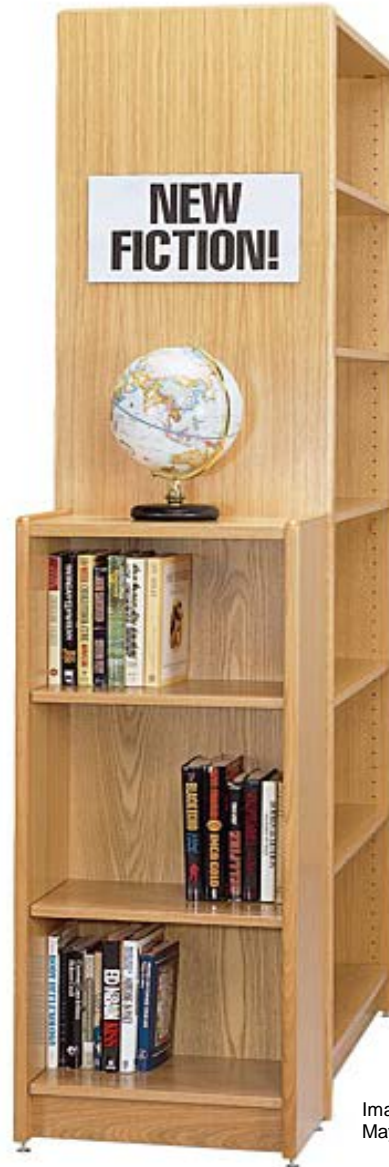


Image for reference only
May not be for the height ordered.

Order #: 0
Paladin Caseworks Inc
www.paladincaseworks.com
info@paladincaseworks.com



Rev.: 3.15.16

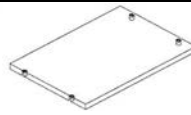




AFW126920 and AFW126924 End of Range Shelving Units

*** Please read and review all instructions prior to starting assembly ***

Key	Description		No. of Parts	No. of Units	Total No. of Parts
1	Rafix cam Factory Installed		8	1	8
2	Shelf Pin		20	1	20
3	Adj Panel Glide		4	1	4
4	Rafix Post		8	1	8
5	Minifix Cam		10	1	10
6	Minifix Post		10	1	10

Hardware Packed By: _____

Date Packed: _____

Key	Description		No. of Parts	No. of Units	Total No. of Parts
A	Soffit		1	1	1
B	End Panel 1 Left hand and 1 Right hand.		2	1	2
C	Toe Kick		1	1	1
D	Shelves		5	1	5
E	Back		1	1	1

Wood Parts Packed By: _____

Date Packed: _____

Order #: 0

Paladin Caseworks Inc
www.paladincaseworks.com
info@paladincaseworks.com



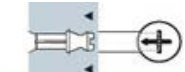
Rev.: 3.15.16

AFW126920 and AFW126924 End of Range Shelving Units

*** Please read and review all instructions prior to starting assembly ***

Step 1 Screw minifix posts (6) into each end panel (B).

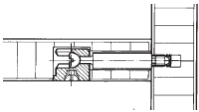
Step 2 Screw rafix posts (4) at top and bottom of each end panel



Step 3 Lay back panel (E) horizontally with holes facing up. Position the minifix cams (5) in holes along edge of back panel with arrow in cams facing outward.

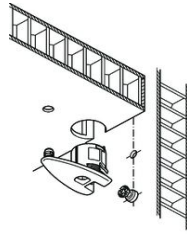


Step 4 Insert minifix posts in one side panel into holes in edge of back panel. Lock into place by turning minifix cam clockwise with phillips screwdriver



Step 5 Repeat step 4 with remaining end panel

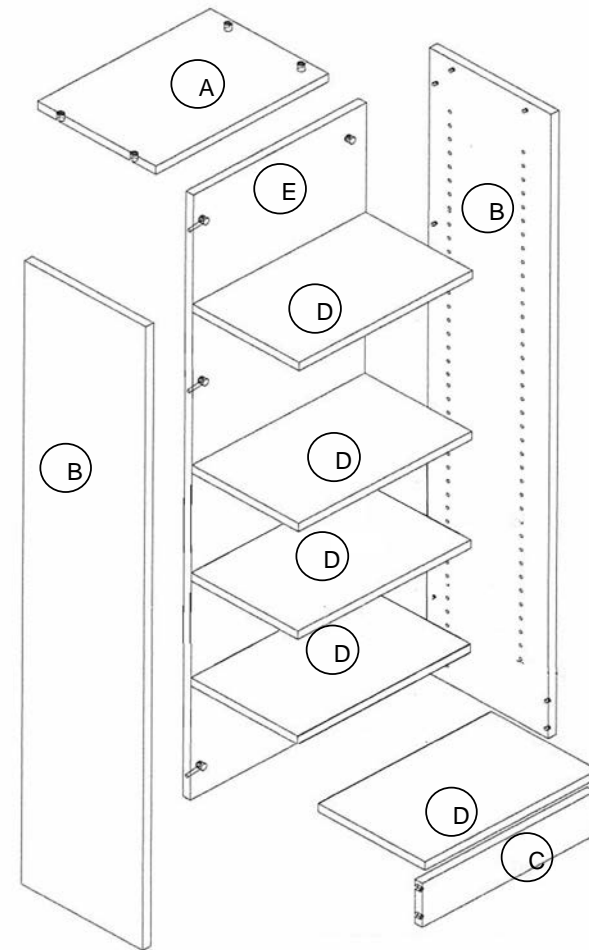
Step 6 Position Soffit (A) over the rafix posts and lock into place by rotating the internal screw head in the rafix cam (1) clockwise.



Step 7 Position toe kick (C) over the rafix bolts and lock into place by rotating the internal screw head clockwise.

Step 8 Hammer the adjustable glides (3) into the holes in the bottoms of the side panels. Rotate to level assembled unit.

Step 9 Set shelf pins (2) and the fixed shelf (D) in the location to close off the base of the unit. Set shelf pins where needed or the adjustable shelves (D).



AFW126920 and AFW126924

Paladin Caseworks Inc
www.paladincaseworks.com
info@paladincaseworks.com



Rev.: 3.15.16

End of Range Shelving Units

Furniture Care Recommendations from the nation's leading furniture manufacturers

- 1.) Dust frequently.
- 2.) Use a quality furniture polish approximately once a month to lessen your chance of expensive refinishing jobs.
- 3.) Clean up spills immediately. Use a blotting action rather than a wiping action.
- 4.) For cleaning use a soft, lint-free absorbent cloth.
- 5.) Avoid placing furniture in direct sun light.
- 6.) Avoid extremes in room humidity. Too high or too low humidity can cause wood to warp or glue lines to fail.
- 7.) Avoid extreme changes in temperature. Arrange furniture away from radiators, registers and air-conditioning units.
- 8.) Rotate accessories on furniture so they do not sit in the same place all the time.
- 9.) Do not place plastic or rubber objects on a wood finish-their ingredients react with those of the finish.
- 10.) Use pads, cloth or felt to protect the furniture surface from plastic, rubber, hot dishes, beverages, bookends, flowerpots and vases.
- 11.) Lift objects-do not drag them across the furniture surface.
- 12.) Never use silicone or petroleum distillate polishes.

