



## Utility Storage



# Terms and Conditions

## Quotes

Paladin Caseworks is happy to quote library furniture built to custom requirements. For assistance in quoting any project please contact Trisha Potter  
Phone: 574.233.8778  
Fax: 574.236.6050  
Email: trisha@paladincaseworks.com

## Terms of Sale

To those distributors with approved credit, all invoices will be due 1% 10, Net 30 days, F.O.B. Shipping Point. All other accounts will be Net Cash before shipment. Distributors must be established with net 30 terms prior to participating in any local, state or federal cooperative bid. Accounts not paid within terms will be assessed 1.5% interest per month. Any account that exceeds 90 days will be placed on credit hold. Any order of \$50,000 net must include a 30% deposit.

## Changes to Orders

Changes to orders already acknowledged are subject to a fee covering the cost of making the requested change, with a minimum charge of \$65.00.

## Cancellation of Orders

All acknowledged orders are considered firm and cannot be canceled without written authorization from Paladin Caseworks. A cancellation fee will be calculated based upon cost incurred by Paladin Caseworks with a minimum charge of \$65.00.

## Return Authorization

Paladin Caseworks will honor a 30 day return policy. All products returned must be free from defect and will be subject to a 20% restocking fee with a minimum charge of \$65.00. All freight charges will be borne by the buyer. All returns must have a Return Authorization number issued prior to the return of the product. Contact Paladin Caseworks Customer Service department at 574.233.8778 for return authorization. Paladin Caseworks cannot accept returns of any special or custom made products including special finishes and laminates (any laminate other than our standard wood grain laminates). After 30 days, goods can be returned only as provided for in Paladin Caseworks standard warranty.

## Storage

Paladin Caseworks cannot offer storage on site for any orders. We can hold an order up to 5 working days after original due date to facility coordination. Storage for any length of time over those 5 working days will be subject to immediate invoicing and off site storage fees including truck rental to move product to off-site facility.

## Warranty

Paladin Caseworks shelving and case goods are warranted against defects in materials and workmanship for 12 years from the date of delivery. During the warranty period, Paladin's sole obligation, and the customer's sole remedy, will be the repair or replacement of the defective product. This determination will be at the sole discretion of Paladin Caseworks. Warranties on hardware, including, but not limited to, hinges, locks, lift columns, monitor mounts, solid surface and laminate materials, are limited to the warranties provided by those specific manufacturers.

Specifically excluded from any warranty claim is damage caused by abusive or abnormal usage, water damage, damage from solvents, exposure to extreme conditions, alterations or modifications not performed at the factory, or failure to follow any distributed instructions for use or assembly.

Furthermore, this warranty does not extend to natural variations in wood grain or natural marks characteristic of the species, color variations within natural materials, or normal wear and tear. This warranty is extended to the original purchaser and is not transferable to any subsequent purchaser. Purchaser shall indemnify and hold harmless Paladin Caseworks, its officers, employees, and agents from any loss, damage, or claim arising from the Purchaser's own design, specifications, or materials supplied by the Purchaser.

No corporate body or individual is authorized to incur or assume any liability in Paladin Caseworks' behalf in connection with the sale or installation of Paladin's products except as stated above.

This is the complete warranty provided by Paladin Caseworks. There are no other warranties, expressed or implied, including any warranty of merchantability, fitness for a particular purpose. (3.2015)

## Product Images

There are three ways a dealer may obtain images of products by Paladin Caseworks for marketing purposes.

- 1.) Contact Paladin Caseworks for available images
- 2.) If image is not available, Paladin Caseworks will provide products at no charge, if dealer agrees to share the image for Paladin Caseworks' use in and with other catalogs.
- 3.) If the dealer requires images unique to their catalog or other marketing materials, product can be purchased at a 30% discount and are liable for all freight charges. Product is not returnable and non-refundable.



# Color Selections

## Oak Wood Veneer Finish Samples



Light Oak



Medium Oak



Dark Oak



Chestnut



Mahogany

## Optional Maple Veneer Finish Samples



Natural



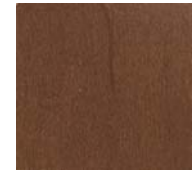
Harvest Wheat



Nutmeg



Amber



Cordovan

Printed samples are for representation only and may not match finished product exactly—Veneer samples available upon request

### Decorative Laminates

Solid colors: Choose from any of the following manufacturer's standards

- Wilson Art
- Pionite\*
- Nevamar
- Formica

Pattern Laminates: Choose from any of the following manufacturer's standards

- Wilson Art
- Pionite
- Nevamar
- Formica

### Wood Grain Pattern Laminates

Oak: Castle Oak 7928-38  
Taj Teak WT741S  
Afternoon Showers HP360  
Regency Mahogany W8352V  
Royal Mahogany WS9450N

Maple: Manitoba Maple 7911-60  
Monticello Maple 7925-38  
Harvest Maple 7953-38  
Wild Cherry 7064-60  
Crown Cherry W8294T

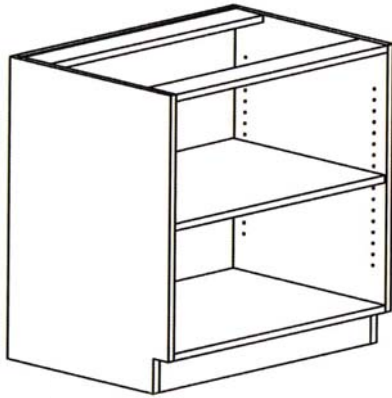
### Custom or Specialty Manufacturing

While Paladin Caseworks offers a complete line of library furniture, we realize there are job specific requirements that may differ from our standard offering. Please contact the sales office or the manufacturing facility for pricing on custom designs, special wood finishes, specific species of veneers or COM fabrics.

Paladin Caseworks is a certified Corian® Solid Surfacing fabricator.

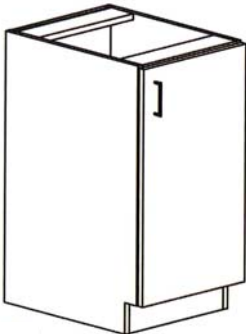
\* Orders from Pionite will have an additional week lead-time due to availability

## Base Cabinets

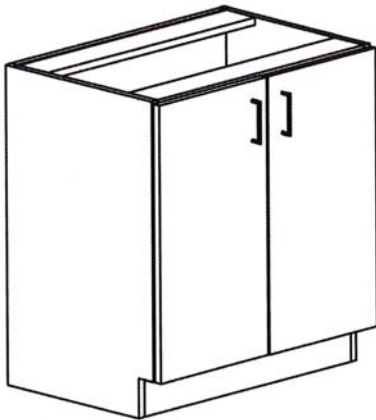


Item #	Description	W	D	H	Wt	Class
11010	Open Cabinet w/ 1 adj shelves	18	22	35		150
11020	Open Cabinet w/ 1 adj shelves	24	22	35		150
11090	Open Cabinet w/ 1 adj shelves	30	22	35		150
11100	Open Cabinet w/ 1 adj shelves	36	22	35		150
11105	Open Cabinet w/ 1 adj shelves	42	22	35		150
11120	Open Cabinet w/ 1 adj shelves	48	22	35		150

Constructed from 3/4" veneer plywood with solid edge banding. 3" cross rails , front and back to support the counter top (sold separately).

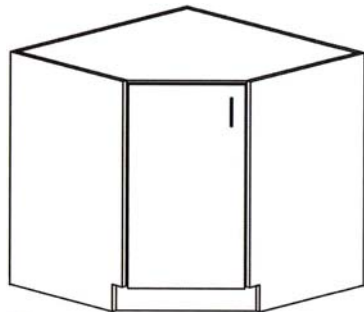
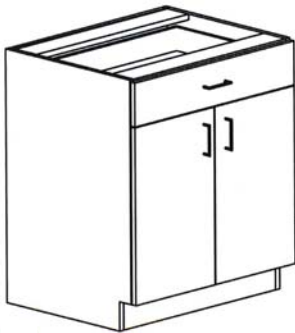
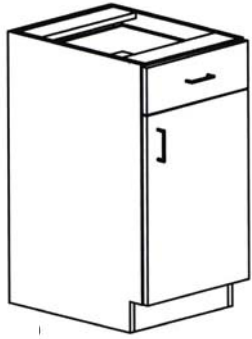


Item #	Description	W	D	H	Wt	Class
11030	Single Closed Cabinet w/ 1 adj shelf, door hinged right	18	22	35		150
11035	Single Closed Cabinet w/ 1 adj shelf, door hinged right	24	22	35		150
11033	Single Closed Cabinet w/ 1 adj shelf, door hinged left	18	22	35		150
11038	Single Closed Cabinet w/ 1 adj shelf, door hinged left	24	22	35		150
11130	Double Door Closed Cabinet w/ 1 adj shelf	30	22	35		150
11140	Double Door Closed Cabinet w/ 1 adj shelf	36	22	35		150
11150	Double Door Closed Cabinet w/ 1 adj shelf	42	22	35		150
11160	Double Door Closed Cabinet w/ 1 adj shelf	48	22	35		150



Constructed from 3/4" veneer plywood with solid edge banding. 3" cross rails , front and back to support the counter top (sold separately). Pulls are 5" aluminum wire.

## Base Cabinets



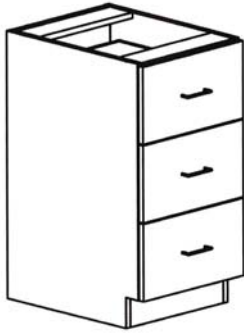
Item #	Description	W	D	H	Wt	Class
11050	Single Door/Drawer Cabinet w/ 1 drawer, 1 adj shelf, door hinged right	18	22	35		150
11060	Single Door/Drawer Cabinet w/ 1 drawer, 1 adj shelf, door hinged right	24	22	35		150
11045	Single Door/Drawer Cabinet w/ 1 drawer, 1 adj shelf, door hinged left	18	22	35		150
11040	Single Door/Drawer Cabinet w/ 1 drawer, 1 adj shelf, door hinged left	24	22	35		150
12230	Double Door/Drawer Cabinet w/ full width drawer, double doors, 1 adj shelf	30	22	35		150
12240	Double Door/Drawer Cabinet w/ full width drawer, double doors, 1 adj shelf	36	22	35		150
12250	Double Door/Drawer Cabinet w/ full width drawer, double doors, 1 adj shelf	42	22	35		150
12260	Double Door/Drawer Cabinet w/ full width drawer, double doors, 1 adj shelf	48	22	35		150
11230	Double Door/Double Drawer Cabinet w/ 2 drawers, double doors, 1 adj shelf	30	22	35		150
11240	Double Door/Double Drawer Cabinet w/ 2 drawers, double doors, 1 adj shelf	36	22	35		150
11250	Double Door/Double Drawer Cabinet w/ 2 drawers, double doors, 1 adj shelf	42	22	35		150
11260	Double Door/Double Drawer Cabinet w/ 2 drawers, double doors, 1 adj shelf	48	22	35		150

Constructed from 3/4" veneer plywood with solid edge banding. 3" cross rails , front and back to support the counter top (sold separately). Pulls are 5" aluminum wire and drawers work on 150lbs glides. European hinges on all doors.

Item #	Description	W	D	H	Wt	Class
12220	Corner Storage	18	22	35		150

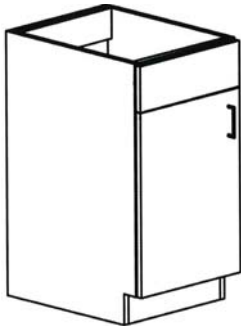
Constructed from 3/4" veneer plywood with solid edge banding. 3" cross rails , front and back to support the counter top (sold separately). Pulls are 5" aluminum wire. European hinges on all doors.

## Base Cabinets



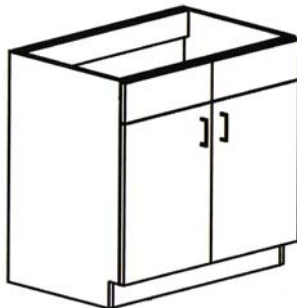
Item #	Description	W	D	H	Wt	Class
11170	Three Box Drawer Cabinet	18	22	35		150
11180	Three Box Drawer Cabinet	24	22	35		150
11185	Three Box Drawer Cabinet	30	22	35		150
11160	Six Box Side-by-Side Drawer Cabinet	36	22	35		150
11162	Six Box Side-by-Side Drawer Cabinet	42	22	35		150
11164	Six Box Side-by-Side Drawer Cabinet	48	22	35		150

Constructed from 3/4" veneer plywood with solid edge banding. 3" cross rails , front and back to support the counter top (sold separately). Pulls are 5" aluminum wire and drawers work on 150lbs glides.

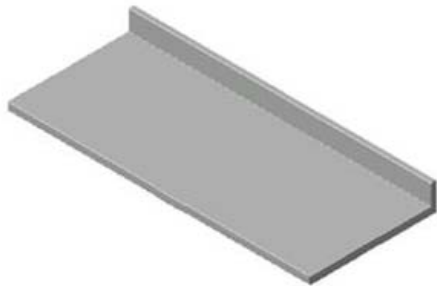
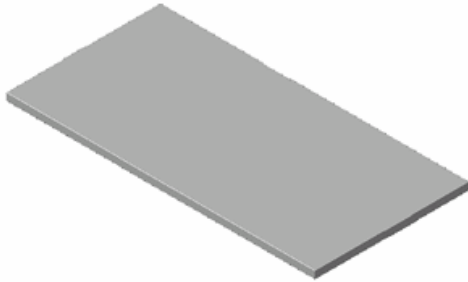


Item #	Description	W	D	H	Wt	Class
11310	Single Door Sink Cabinet, sink, faucet and trim, not included hinged right	18	22	35		150
11320	Single Door Sink Cabinet, sink, faucet and trim, not included hinged right	24	22	35		150
11315	Single Door Sink Cabinet, sink, faucet and trim, not included hinged left	18	22	35		150
11325	Single Door Sink Cabinet, sink, faucet and trim, not included hinged left	24	22	35		150
11330	Double Door Sink Cabinet, sink faucet and trim not included	30	22	35		150
11340	Double Door Sink Cabinet, sink faucet and trim not included	36	22	35		150
11350	Double Door Sink Cabinet, sink faucet and trim not included	42	22	35		150
11360	Double Door Sink Cabinet, sink faucet and trim not included	48	22	35		150

Constructed from 3/4" veneer plywood with solid edge banding. 3" cross rails , front and back to support the counter top (sold separately). Pulls are 5" aluminum wire. No Sinks, faucets or trim is included. All cutouts and final connections to be by owner



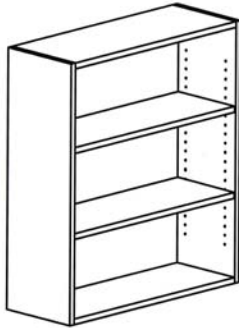
## Counter tops



Item #	Description	W	D	H	Wt	Class
11810	24" Deep Self-edged Counter top	PLF	24	1-1/8		150
11820	30" Deep Self-edged Counter top	PLF	30	1-1/8		150
11830	24" Deep Self-edged Counter top with 4"H Back Splash	PLF	24	1-1/8		150
11840	30" Deep Self-edged Counter top with 4"H Back Splash	PLF	30	1-1/8		150
11850	4"H End splash for 24"D top—cut to length and applied in the field	1-1/8	22-3/8	4		150
11860	4"H End splash for 30"D top—cut to length and applied in the field	1-1/8	28-3/8	4		150

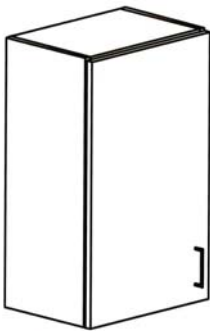
Constructed from 1-1/8" IPB w/ bottom backer. High pressure laminate is applied to the exposed edges and face. 4"H Back splashes and end splashes are as specified by item number. All are sold by liner foot. Maximum length is 108". Drawings required.

# Wall Cabinets

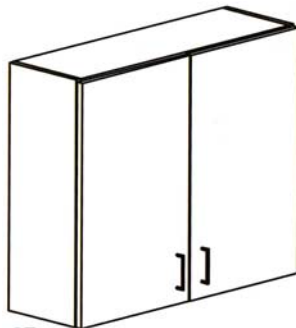


Item #	Description	W	D	H	Wt	Class
11370	Open Wall Cabinet w/ 2 adj shelves	18	14	30		150
11380	Open Wall Cabinet w/ 2 adj shelves	24	14	30		150
11390	Open Wall Cabinet w/ 2 adj shelves	30	14	30		150
11400	Open Wall Cabinet w/ 2 adj shelves	36	14	30		150
11410	Open Wall Cabinet w/ 2 adj shelves	42	14	30		150
11420	Open Wall Cabinet w/ 2 adj shelves	48	14	30		150

Constructed from 3/4" veneer plywood with solid edge banding. Blocking in top and bottom for wall mounting—no attachment hardware included.



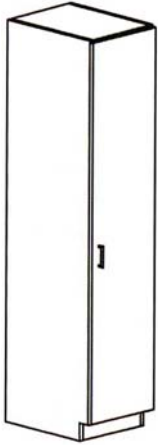
Item #	Description	W	D	H	Wt	Class
11440	Single Door Wall Cabinet w / 2 adj shelves and door hinged right	18	14	30		150
11450	Single Door Wall Cabinet w / 2 adj shelves and door hinged right	24	14	30		150
11460	Single Door Wall Cabinet w / 2 adj shelves and door hinged left	18	14	30		150
11470	Single Door Wall Cabinet w / 2 adj shelves and door hinged left	24	14	30		150
11480	Double Door Wall Cabinet w / 2 adj shelves	30	14	30		150
11490	Double Door Wall Cabinet w / 2 adj shelves	36	14	30		150
11500	Double Door Wall Cabinet w / 2 adj shelves	42	14	30		150
11510	Double Door Wall Cabinet w / 2 adj shelves	48	14	30		150



Constructed from 3/4" veneer plywood with solid edge banding. Blocking in top and bottom for wall mounting—no attachment hardware included. Pulls are 5" aluminum wire. European hinges on all doors

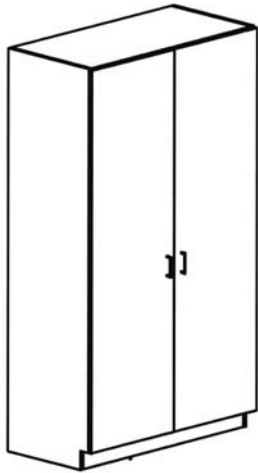


# Tall Cabinets



Item #	Description	W	D	H	Wt	Class
11580	Tall Storage w / 4 adj and 2 fixed shelves, locking door hinged right	24	24	84		150
11590	Tall Storage w / 4 adj and 2 fixed shelves, locking door hinged left	24	24	84		150

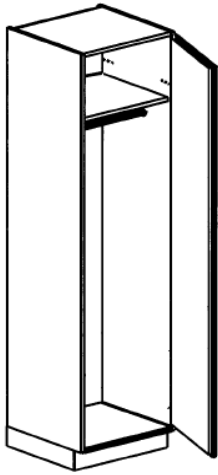
Constructed from 3/4" veneer plywood with solid edge banding. Blocking in top and bottom for wall mounting—no attachment hardware included.



Item #	Description	W	D	H	Wt	Class
11630	Tall Storage w / 4 adj and 2 fixed shelves, locking doors	30	24	84		150
11640	Tall Storage w / 4 adj and 2 fixed shelves, locking doors	36	24	84		150
11610	Tall Storage w / 4 adj and 2 fixed shelves, locking doors	42	24	84		150
11620	Tall Storage w / 4 adj and 2 fixed shelves, locking doors	48	24	84		150

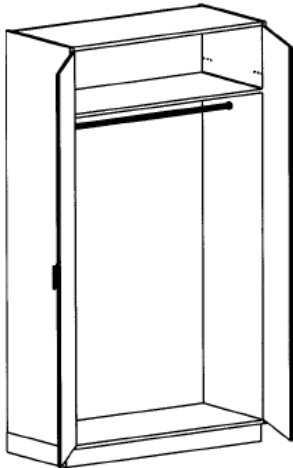
Constructed from 3/4" veneer plywood with solid edge banding. Blocking in top and bottom for wall mounting—no attachment hardware included.

# Wardrobe Cabinets



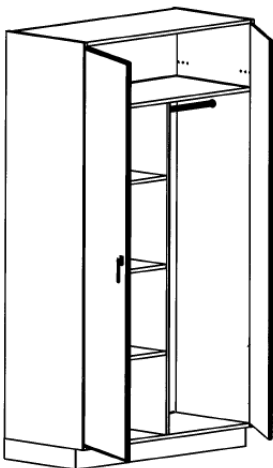
Item #	Description	W	D	H	Wt	Class
11585	Wardrobe Storage w / 1 fixed shelf, hanging rod and locking door hinged right	24	24	84		150
11595	Wardrobe Storage w / 1 fixed shelf, hanging rod and locking door hinged left	24	24	84		150

Constructed from 3/4" veneer plywood with solid edge banding. Blocking in top and bottom for wall mounting—no attachment hardware included.



Item #	Description	W	D	H	Wt	Class
11635	Wardrobe Storage w / 1 fixed shelf, hanging rod and locking doors	30	24	84		150
11645	Wardrobe Storage w / 1 fixed shelf, hanging rod and locking doors	36	24	84		150
11615	Wardrobe Storage w / 1 fixed shelf, hanging rod and locking doors	42	24	84		150
11625	Wardrobe Storage w / 1 fixed shelf, hanging rod and locking doors	48	24	84		150

Constructed from 3/4" veneer plywood with solid edge banding. Blocking in top and bottom for wall mounting—no attachment hardware included.



Item #	Description	W	D	H	Wt	Class
11710	Wardrobe Storage w / 3 adj half shelves, 1 full fixed shelf, Half hanging rod and locking doors	42	24	84		150
11720	Wardrobe Storage w / 3 adj half shelves, 1 full fixed shelf, Half hanging rod and locking doors	48	24	84		150

Constructed from 3/4" veneer plywood with solid edge banding. Blocking in top and bottom for wall mounting—no attachment hardware included.

Paladin Caseworks Inc  
1607 S Main Street  
South Bend IN 46613

Phone: 574-233-8778  
Fax: 574-236-6050

Email: [info@paladincaseworks.com](mailto:info@paladincaseworks.com)  
Web: [www.paladincaseworks.com](http://www.paladincaseworks.com)

