

BY PALADIN CASEWORKS

SENTINEL



table of contents

Terms and Conditions	3
Color Selections	4
Product Materials	5
Circulation Desk	
Specifications	6
Task Desks	7-8
36"W Cupboard Storage	9-14
42"W Cupboard Storage	15-18
48"W Cupboard Storage	19-21
Service Towers	22-25
Corner Sections	26-27
End Panels	25
Computer / Study Carrels	
Specifications	28-29
Sit Down Carrels	30
Stand Up Carrels	31
Reading Tables	
Specifications	32
Round and Square	33
Rectangle	33



terms and conditions

Quotes

Paladin Caseworks is happy to quote library furniture built to custom requirements. For assistance in quoting any project please contact

Trisha Potter

Phone: 574.233.8778

Fax: 574.236.6050

Email: trisha@paladincaseworks.com

Terms of Sale

To those distributors with approved credit, all invoices will be due 1% 10, Net 30 days, F.O.B. Shipping Point. All other accounts will be Net Cash before shipment. Distributors must be established with net 30 terms prior to participating in any local, state or federal cooperative bid. Accounts not paid within terms will be assessed 1.5% interest per month. Any account that exceeds 90 days will be placed on credit hold. Any order of \$50,000 net must include a 30% deposit.

Changes to Orders

Changes to orders already acknowledged are subject to a fee covering the cost of making the requested change, with a minimum charge of \$65.00.

Cancellation of Orders

All acknowledged orders are considered firm and cannot be canceled without written authorization from Paladin Caseworks. A cancellation fee will be calculated based upon cost incurred by Paladin Caseworks with a minimum charge of \$65.00.

Return Authorization

Paladin Caseworks will honor a 30 day return policy. All products returned must be free from defect and will be subject to a 20% restocking fee with a minimum charge of \$65.00. All freight charges will be borne by the buyer. All returns must have a Return Authorization number issued prior to the return of the product. Contact Paladin Caseworks Customer Service department at 574.233.8778 for return authorization. Paladin Caseworks cannot accept returns of any special or custom made products including special finishes and laminates (any laminate other than our standard wood grain laminates). After 30 days, goods can be returned only as provided for in Paladin Caseworks standard warranty.

Storage

Paladin Caseworks cannot offer storage on site for any orders. We can hold an order up to 5 working days after original due date to facility coordination. Storage for any length of time over those 5 working days will be subject to immediate invoicing and off site storage fees including truck rental to move product to off-site facility.

Warranty

Paladin Caseworks shelving and case goods are warranted against defects in materials and workmanship for 12 years from the date of delivery. During the warranty period, Paladin's sole obligation, and the customer's sole remedy, will be the repair or replacement of the defective product. This determination will be at the sole discretion of Paladin Caseworks. Warranties on hardware, including, but not limited to, hinges, locks, lift columns, monitor mounts, solid surface and laminate materials, are limited to the warranties provided by those specific manufacturers.

Specifically excluded from any warranty claim is damage caused by abusive or abnormal usage, water damage, damage from solvents, exposure to extreme conditions, alterations or modifications not performed at the factory, or failure to follow any distributed instructions for use or assembly.

Furthermore, this warranty does not extend to natural variations in wood grain or natural marks characteristic of the species, color variations within natural materials, or normal wear and tear. This warranty is extended to the original purchaser and is not transferable to any subsequent purchaser. Purchaser shall indemnify and hold harmless Paladin Caseworks, its officers, employees, and agents from any loss, damage, or claim arising from the Purchaser's own design, specifications, or materials supplied by the Purchaser.

No corporate body or individual is authorized to incur or assume any liability in Paladin Casework's behalf in connection with the sale or installation of Paladin's products except as stated above.

This is the complete warranty provided by Paladin Caseworks. There are no other warranties, expressed or implied, including any warranty of merchantability, fitness for a particular purpose. (3.2015)

Product Images

There are three ways a dealer may obtain images of products by Paladin Caseworks for marketing purposes.

- 1.) Contact Paladin Caseworks for available images
- 2.) If image is not available, Paladin Caseworks will provide products at no charge, if dealer agrees to share the image for Paladin Caseworks' use in and with other catalogs.
- 3.) If the dealer requires images unique to their catalog or other marketing materials, product can be purchased at a 30% discount and are liable for all freight charges. Product is not returnable and non-refundable.



color · selection

Oak Wood Veneer Finish Samples



Light Oak



Medium Oak



Dark Oak



Chestnut



Mahogany

Optional Maple Veneer Finish Samples



Natural



Harvest Wheat



Nutmeg



Amber

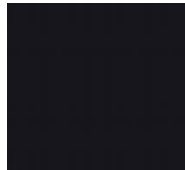


Cordovan

Metal Finish Samples



Stardust Silver



Tech Black

Wood Grain Pattern Laminates

Oak: Castle Oak 7928-38
Taj Teak WT741S
Afternoon Showers HP360
Regency Mahogany W8352V
Royal Mahogany WS9450N

Maple: Manitoba Maple 7911-60
Monticello Maple 7925-38
Harvest Maple 7953-38
Wild Cherry 7064-60
Crown Cherry W8294T

Printed samples are for representation only and may not match finished product exactly—Veneer samples available upon request

Decorative Laminates

Solid colors: Choose from any of the following manufacturer's standards

Wilson Art
Pionite*
Nevamar
Formica

Pattern Laminates: Choose from any of the following manufacturer's standards

Wilson Art
Pionite
Nevamar
Formica

Custom or Specialty Manufacturing

While Paladin Caseworks offers a complete line of library furniture, we realize there are job specific requirements that may differ from our standard offering. Please contact the sales office or the manufacturing facility for pricing on custom designs, special wood finishes, specific species of veneers or COM fabrics.

Paladin Caseworks is a certified Corian® Solid Surfacing fabricator.

* Orders from Pionite will have an additional week lead-time due to availability



product · materials

Wood Species: Exposed wood shall be **northern red oak hardwoods** / **white maple hardwoods** free of imperfections and shall be carefully selected for uniformity of grain, texture and figure. All hardwoods shall be air seasoned, kiln dried and stabilized to approximately 7% moisture content.

Veneers: In order to control quality and to ensure matching all library furniture, exposed veneers shall be hand selected **rift cut, Grade A premium northern red oak** / **plain sliced, Grade A premium white maple**, slip matched for uniform color and not less than 1/28" thick.

Plywood: Solid hardwood veneer core panels shall be constructed of an odd number of plies with face and back of **northern red oak veneers** / **white maple veneers**. Each ply shall be applied at a right angle to the grain of the adjacent ply to resist warping. All plies shall be hardwood and free from structural voids or other defects. All plywood shall meet standards as currently established by the HPVA (Hardwood Plywood Veneer Association).

Kerfcore: Flexible product used to form curves and radii. Core consists of particle board w kerfs and flexible latex impregnated paper face laminated with wood veneer as specified. The kerfs allow the material to curve.

High Pressure Laminate: Where specified for work surfaces, HPL (high pressure laminate) shall be .050" thick. HPL shall be maximum hardness to resist scratches, fading or staining due to required use and purpose. Where HPL is used on work surfaces it shall be matched with a backer to prevent warp or de-lamination. All HPL shall conform to standards NEMA_LDI-1964 and LD-3 GP50. All standard laminates from Wilson Art, Nevamar, Pionite or Formica available at no additional charge.

Marmoleum: Homogeneous sheet linoleum of primarily natural materials consisting of linseed oil, wood flour, and rosin binders, mixed onto natural jute backing. Pattern and color shall extend throughout total thickness of material. (Following patterns only: Fresco, Dual, Vivace, Real)

Joinery: All joints shall be traditional furniture construction including bore and dowel, glued and screwed, reinforced cleats and mortise and tenon. Where indicated, metal – to – metal mechanical fasteners will be used.

Wood Finish: 5-Step finishing process shall be utilized including toning, hand wiping, staining, sanding and top coat. Top coat is a catalyzed lacquer finish for a hard durable surface. Finishes are to meet AWI Standards.

Hardware: All hardware shall be constructed to meet institutional requirements. Door and drawer pulls shall be architecturally designed and 96mm. (Wire pulls not acceptable) Hinges shall be European styled concealed hinges with 170 degree opening radius. Locks shall be 5-disc tumbler locks, colored to match pulls and located on all doors and drawers (keyed alike).

circulation · desk

Desk Top: **Individual / Continuous** circulation desktops shall be a minimum of 1-1/4" thick, 45lbs industrial grade particle-board core. Solid lumber **edge** band shall be a single convex profile known as the Sentinel edge. Top surfaces shall be .050" thick high pressure laminate and shall be used with an appropriate backer sheet. Optional top materials include Corian, Marmoleum and our exclusive Paper Stone Tops.

Cabinet Construction: All modular circulation desk units shall be constructed of 3/4" thick plywood with face veneers, modular in design and fully assembled. Joints are screwed, glued, doweled and/or mechanically fastened. Standard units shall be 28" deep, by either 37" or 29H with 33" H patron ledge. All units shall have an opening for electrical wiring between adjoining units. The 33" patron ledges will provide access to the wire management trough with the use of 3" H brushes in aluminum channel. Both the standard 37H cabinets and the 33H cabinets with patron ledge will have removable internal panels for full access to the wire management trough. These panels will be secured by the use of **trim screws** to allow for easy access and removal. All units shall have a closed base with a recessed toe space 4" high and 3" deep on the internal side of the cabinet. The front panels will be constructed from Kercore in a concave radius. The veneer on the front section is to run horizontal. The face toe kick is finished in HPL with 1/2" x 1" solid lumber strips separating each detail.

Cabinet Configurations: Cabinets are available in 33 and 37H only. Widths are 36, 42 and 48 with multiple storage combinations. 33H cabinets are provided with patron ledge with full length grommet brushes in the patron ledge. 37H units are provided with full depth tops.

Service Towers: 24"w Cabinets shall serve as single function cabinets at 39H. HPL front and top of cabinet shall match the toe kick HPL pattern. Doors and drawers on the service towers shall be inset.

Desk Units: Desks are available in standard 36, 48, 60 and 72" widths and either 33H with patron ledge raceway or at 37H full depth top. Desks can be modified in width to accommodate dimensional changes in overall circ desk arrangements. Desks are fully electric with 1 duplex receptacle in desk less than 60"w and 2 duplex receptacles in 60"w and greater. Location of house power in relation to the circ desk is required. 33H desks are provided with full length brush grommets in the patron ledges, 37H desks are provided with a single grommet in desks less than 60"w and 2 grommets in 60"w and greater.

Connectors: All cabinets are connected one to another through the use of male and female murakoshi bolts for a metal - to - metal connection.

Metal spline: A 12 ga metal spline is mounted between each consecutive cabinet unit on both the patron and the librarian sides unless the series is broken by either an end panel or a service tower. The spline is powder coated in standard Stardust Silver or Tech Black (other colors available with up-charge).

Adjustable Shelves: All adjustable shelves shall be adjustable on 32 mm centers with steel pin supports. Pin shall be 5mm in diameter and have an integral collar to prevent dislodgment.

Doors: Each door storage module shall have doors of 3/4" thick plywood with veneers. Each hinged door shall be mounted to the cabinet by means of concealed hinges which open 170 degrees (exposed hinges will not be considered acceptable). All doors shall have one horizontally mounted Sentinel pull as described in the hardware section.

Storage Drawers: All drawer fronts shall be 3/4" thick plywood with select veneer on both faces. Drawer box shall be constructed of 1/2" hardwood plywood. All drawer bottoms shall be 1/4" thick plywood. The bottom shall set into dadoes routed in side, back and front and reinforced with glue. The drawers shall operate on side mounted, full extension slides having a load capacity of 50 lb. per glide. All drawers shall have one horizontally mounted Sentinel pull as described in the hardware section.

Locks: All locks are keyed alike, 5-disc tumbler locks provided on doors and drawers and indicated on individual cabinet specification.

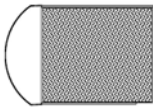
Panel glides: Each end and adder panel is provided with adjustable leveling glides



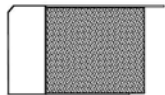
task · desks

All task desk units shall be 28" deep, by either 37" or 29H with 33" H patron ledge. All units shall have an opening for electrical wiring between adjoining units. This area will include 2 duplex outlets and 4 locations for data or communication ports all mounted on 16 gauge , black metal raceway. The 33" patron ledges will provide access to the wire management trough with the use of 3" H brushes in aluminum channel. Both the standard 37H cabinets and the 33H cabinets with patron ledge will have removable internal panels for full access to the wire management trough. These panels will be secured by the use of trim screws to allow for easy access and removal. The front panels will be constructed from Kerfcore in a concave radius. The veneer on the front section is to run horizontal. The face toe kick is finished in HPL with 1/2" x 1" solid lumber strips separating each detail.

Sentinel Edge Band is a soft 3/4" bull nose milled from solid lumber. The external edge captures both the HPL surface and the balancing paper on the bottom



Classic Edge Band is a squared 1/2" bevel milled from solid lumber. The external edge captures both the HPL surface and the balancing paper on the bottom



Bi-level Circ Desk Work Stations

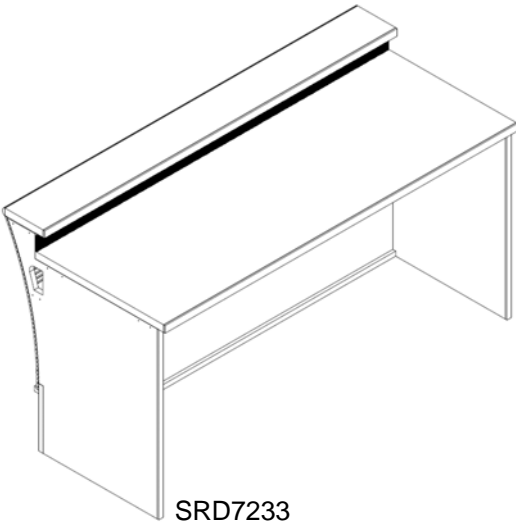
		Height	
		Work Surface	Patron Side
SRD3633	36W STNL Desk Unit w/patron ledge raceway Includes: 2 Duplex outlets w/ locations for up to 4 data ports, all in a black metal raceway House connector (hardwire or plug version) Full length brush grommet Removable panel to wire access Junction connectors for electric	29H	33H
Also Available:			
SRD4833	48W STNL Desk Unit w/patron ledge raceway	29H	33H

Circ Desk Work Stations

		Height	
		Work Surface	Patron Side
SRD3637	36W STNL Desk Unit Includes: 2 Duplex outlets w/ locations for up to 4 data ports, all in a black metal raceway House connector (hardwire or plug version) Removable panel to wire access 3" Dia black grommet (1 for 36 and 48 long) Junction connectors for electric	37H	37H
Also Available:			
SRD4837	48W STNL Desk Unit	37H	37H

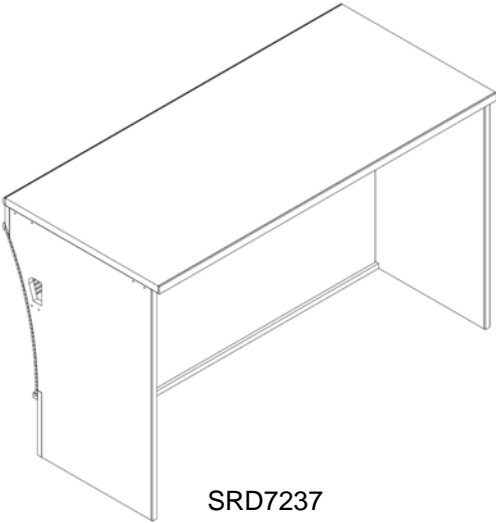


task · desks



SRD7233

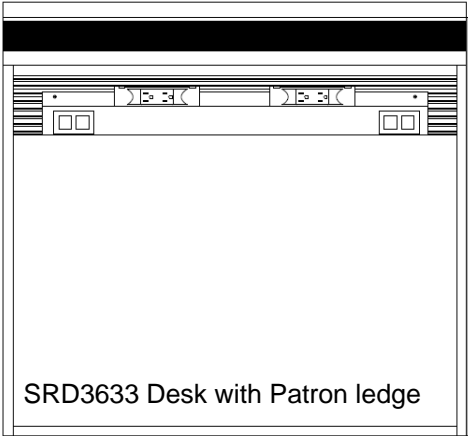
Bi-level Circ Desk Work Stations		Height	
		Work Surface	Patron Side
SRD6033	60W STNL Desk Unit w/patron ledge raceway	29H	33H
Includes: 2 Duplex outlets w/ locations for up to 4 data ports, all in a black metal raceway House connector (hardwire or plug version) Full length brush grommet Removable panel to wire access Junction connectors for electric			
Also Available:			
SRD7233	72W STNL Desk Unit w/patron ledge raceway	29H	33H



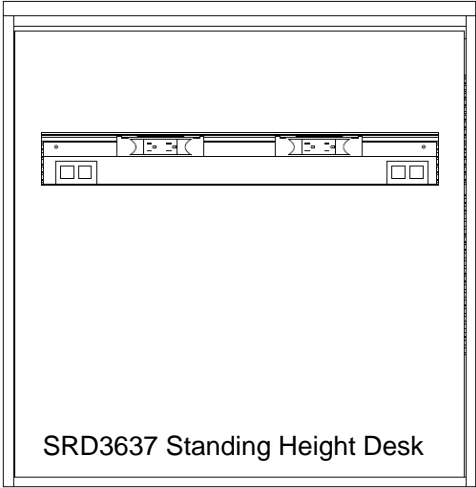
SRD7237

Circ Desk Work Stations		Height	
		Work Surface	Patron Side
SRD6037	60W STNL Desk Unit	37H	37H
Includes: 2 Duplex outlets w/ locations for up to 4 data ports, all in a black metal raceway House connector (hardwire or plug version) Removable panel to wire access 3" Dia black grommet (2 for 60 and 72 long) Junction connectors for electric			
Also Available:			
SRD7237	72W STNL Desk Unit	37H	37H

Typical detail of the task side of the desk units showing power and data accessibility



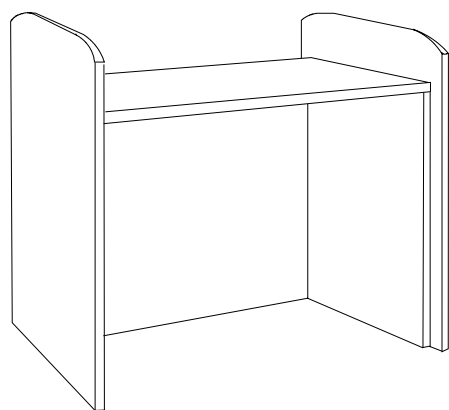
SRD3633 Desk with Patron ledge



SRD3637 Standing Height Desk



ADA · desk



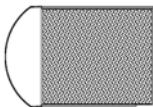
Functional Corner		Height Work Surface
SRD36AD	36W STNL ADA Desk Unit, 33H (End panels required)	33H
Includes: Clear inside dimension of 34-1/2w x 19"d x 31-3/4H		
Patron access desk for ADA requirements		
Wire management terminates at this unit—plan accordingly		
Required:	Must purchase (2) end panels for this unit based on the adjoining cabinet heights	



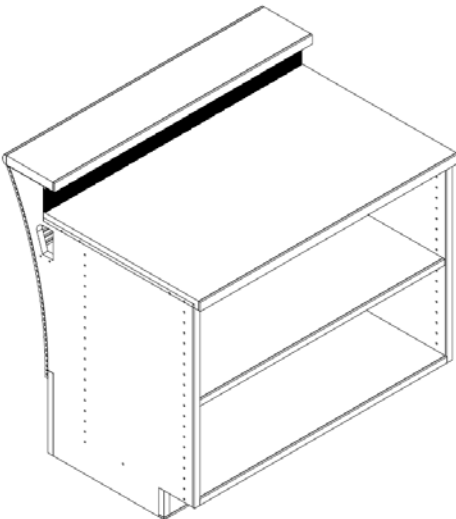
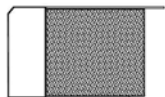
36W · cupboards

All 36" w cupboard units shall be 28" deep, by either 37" or 29H with 33" H patron ledge. All units shall have an opening for electrical wiring between adjoining units. The 33" patron ledges will provide access to the wire management trough with the use of 3" H brushes in aluminum channel. There are removable internal panels for full access to the wire management trough behind the shelves or drawer boxes of each configuration. These panels will be secured by the use of trim screws to allow for easy access and removal. The front panels will be constructed from Kercore in a concave radius. The veneer on the front section is to run horizontal. The face toe kick is finished in HPL with ½" x 1" solid lumber strips separating each detail. The work surfaces are continuous over equal height adjoining units in the longest lengths possible.

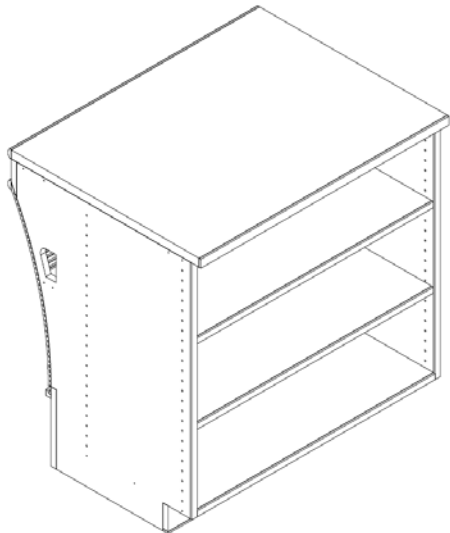
Sentinel Edge Band is a soft 3/4" bull nose milled from solid lumber. The external edge captures both the HPL surface and the balancing paper on the bottom



Classic Edge Band is a squared 1/2" bevel milled from solid lumber. The external edge captures both the HPL surface and the balancing paper on the bottom



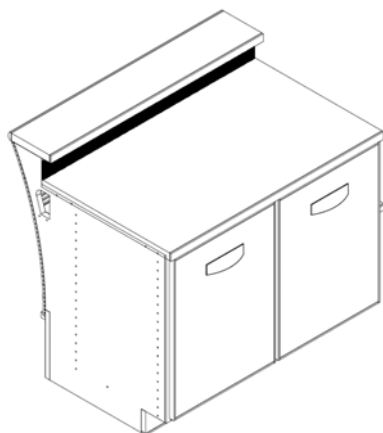
Circ Desk 36" Cabinets		Height	
		Work Surface	Patron Side
SCC363301	36W STNL Cabinet, Open Shelves, 1adj/1fxd, Patron Ledge Raceway	29H	33H
Includes: 1 full depth adj. shelves			
1 full depth fxd. shelf			
Removable panel to wire access			
Full length brush grommet			
Junction connectors for electric			



Circ Desk 36" Cabinets		Height	
		Work Surface	Patron Side
SCC363701	36W STNL Cabinet, Open Shelves	37H	37H
Includes: 2 full depth adj. shelves			
1 full depth fxd. shelf			
Removable panel to wire access			
Junction connectors for electric			

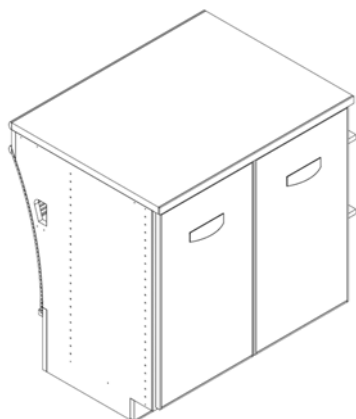


36W · cupboards



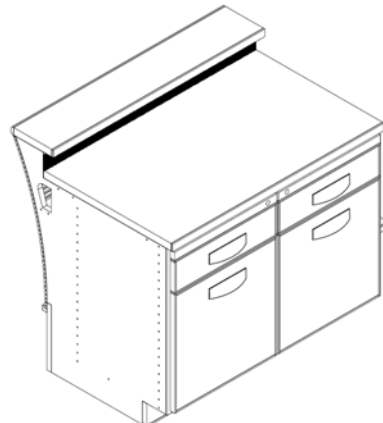
Circ Desk 36" Cabinets

		Height	
		Work Surface	Patron Side
SCC363302	36W STNL Cabinet, Closed Shelves 1adj/1fxd, Patron Ledge Raceway	29H	33H
Includes: 1 Full depth adj and 1 fxd. base shelf 2 Locking doors Removable panel to wire access Full length brush grommet Junction connectors for electric			



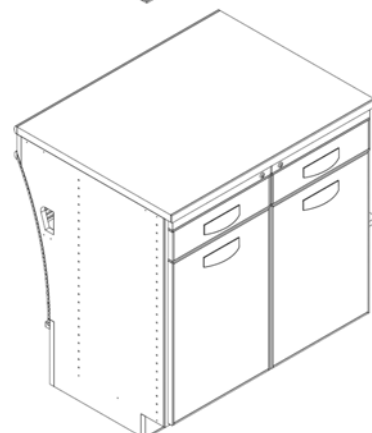
Circ Desk 36" Cabinets

		Height	
		Work Surface	Patron Side
SCC363702	36W STNL Cabinet, Closed Shelves	37H	37H
Includes: 2 Full depth adj and 1 fxd. base shelf 2 Locking doors Removable panel to wire access Junction connectors for electric			



Circ Desk 36" Cabinets

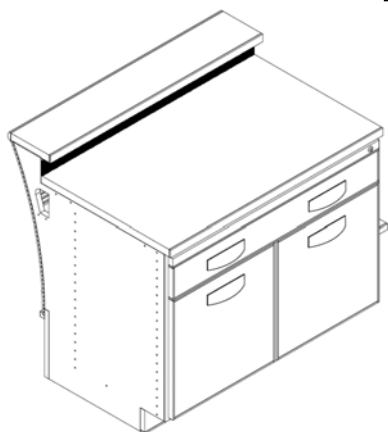
		Height	
		Work Surface	Patron Side
SCC363303	36W STNL Cabinet, 2 Box Drawers over 2 Doors, Patron Ledge Raceway	29H	33H
Includes: 1 Full depth adj and 1 fxd. base shelf 2 Locking doors and drawers Full length brush grommet Removable panel to wire access Junction connectors for electric			



Circ Desk 36" Cabinets

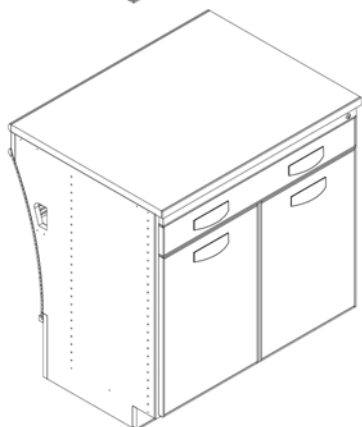
		Height	
		Work Surface	Patron Side
SCC363703	36W STNL Cabinet, 2 Box Drawers over 2 Doors with Shelves, 2adj/1fxd	37H	37H
Includes: 2 Full depth adj and 1 fxd. base shelf 2 Locking doors and drawers Removable panel to wire access Junction connectors for electric			

36W · cupboards



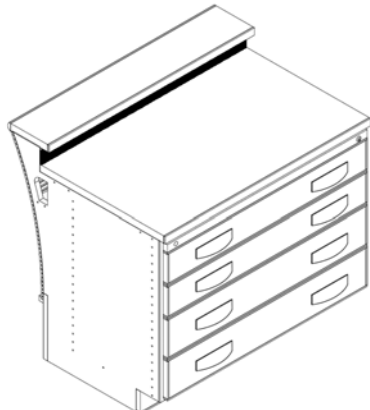
Circ Desk 36" Cabinets

		Height	
		Work Surface	Patron Side
SCC363304	36W STNL Cabinet, 1 Full Box Drawer over 2 Door, Patron Ledge	29H	33H
Includes: 1 Full depth adj and 1 fxd. base shelf 2 Locking doors and 1 full drawer Full length brush grommet Removable panel to wire access Junction connectors for electric			



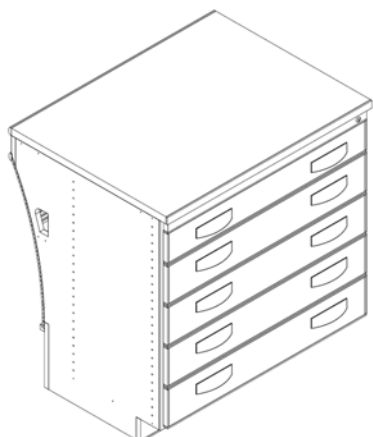
Circ Desk 36" Cabinets

		Height	
		Work Surface	Patron Side
SCC363704	36W STNL Cabinet, 1 Full Box Drawer over 2 Door	37H	37H
Includes: 2 Full depth adj and 1 fxd. base shelf 2 Locking doors and 1 full drawer Removable panel to wire access Junction connectors for electric			



Circ Desk 36" Cabinets

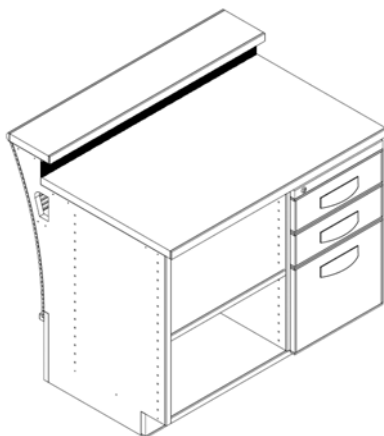
		Height	
		Work Surface	Patron Side
SCC363305	36W STNL Cabinet, 4 Full Box Drawers, Patron Ledge Raceway	29H	33H
Includes: 4 Full width locking drawers Full length brush grommet Removable panel to wire access Junction connectors for electric			



Circ Desk 36" Cabinets

		Height	
		Work Surface	Patron Side
SCC363705	36W STNL Cabinet, 5 Full Box Drawers	37H	37H
Includes: 5 Full width locking drawers Removable panel to wire access Junction connectors for electric			

36W · cupboards



Circ Desk 36" Cabinets

Height	
Work Surface	Patron Side

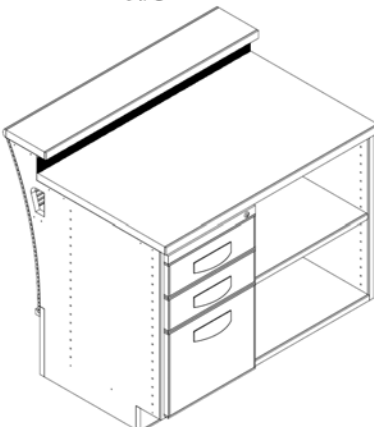
SCC363306	36W STNL Cabinet, 2 Box, 1 File w/ Open Shelves adjacent left, Patron Ledge Raceway	29H	33H
Includes: 1 Full depth adj and 1 fxd. base shelf 2 Box and 1 file drawer, gang locked Full length brush grommet Removable panel to wire access Junction connectors for electric			



Circ Desk 36" Cabinets

Height	
Work Surface	Patron Side

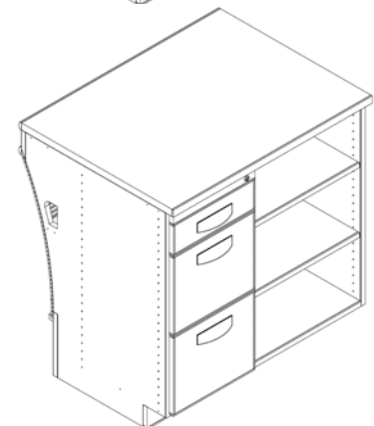
SCC363706	36W STNL Cabinet, 1 Box, 2 File w/ Open Shelves adjacent left	37H	37H
Includes: 2 Full depth adj and 1 fxd. base shelf 1 Box and 2 file drawers, gang locked Full length brush grommet Removable panel to wire access Junction connectors for electric			



Circ Desk 36" Cabinets

Height	
Work Surface	Patron Side

SCC363307	36W STNL Cabinet, 2 Box, 1 File w/ Open Shelves adjacent right, Patron Ledge Raceway	29H	33H
Includes: 1 Full depth adj and 1 fxd. base shelf 2 Box and 1 file drawers, gang locked Full length brush grommet Removable panel to wire access Junction connectors for electric			

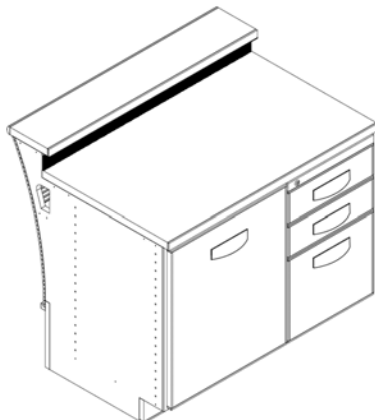


Circ Desk 36" Cabinets

Height	
Work Surface	Patron Side

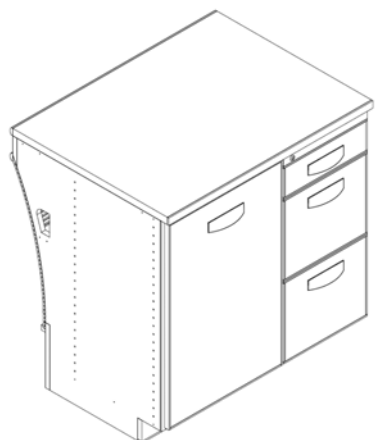
SCC363707	36W STNL Cabinet, 1 Box, 2 File w/ Open Shelves adjacent right	37H	37H
Includes: 2 Full depth adj and 1 fxd. base shelf 1 Box and 2 file drawers, gang locked Full length brush grommet Removable panel to wire access Junction connectors for electric			

36W · cupboards



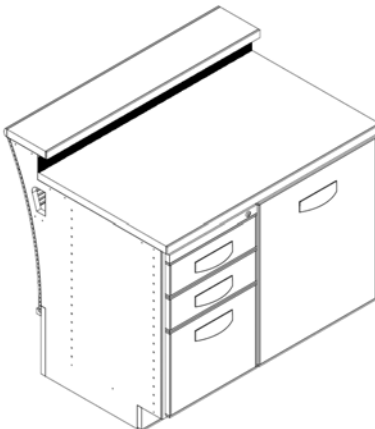
Circ Desk 36" Cabinets

		Height	
		Work Surface	Patron Side
SCC363308	36W STNL Cabinet, 2 Box, 1 File w/ Closed Shelves hinged left, Patron	29H	33H
Includes: 1 Full depth adj and 1 fxd. base shelf behind single locking door 2 Box and 1 file drawer, gang locked Full length brush grommet Removable panel to wire access Junction connectors for electric			



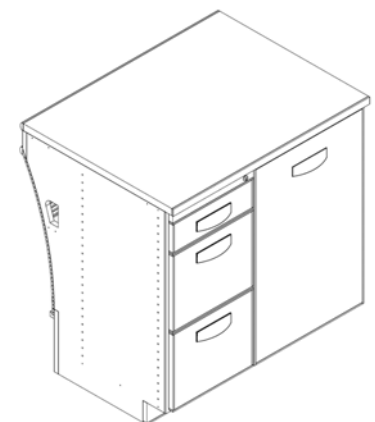
Circ Desk 36" Cabinets

		Height	
		Work Surface	Patron Side
SCC363708	36W STNL Cabinet, 1 Box, 2 File w/ Closed Shelves hinged left	37H	37H
Includes: 1 Full depth adj and 1 fxd. base shelf behind single locking door 1 Box and 2 file drawer, gang locked Full length brush grommet Removable panel to wire access Junction connectors for electric			



Circ Desk 36" Cabinets

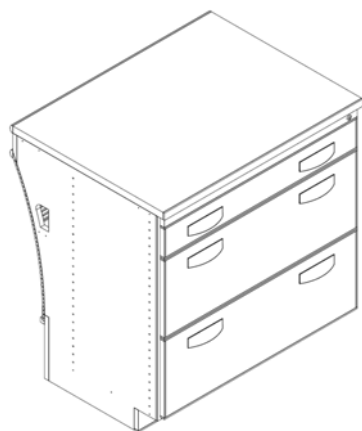
		Height	
		Work Surface	Patron Side
SCC363309	36W STNL Cabinet, 2 Box, 1 File w/ Closed Shelves hinged right, Patron	29H	33H
Includes: 1 Full depth adj and 1 fxd. base shelf behind single locking door 2 Box and 1 file drawer, gang locked Full length brush grommet Removable panel to wire access Junction connectors for electric			



Circ Desk 36" Cabinets

		Height	
		Work Surface	Patron Side
SCC363709	36W STNL Cabinet, 1 Box, 2 File w/ Closed Shelves hinged right	37H	37H
Includes: 1 Full depth adj and 1 fxd. base shelf behind single locking door 1 Box and 2 file drawer, gang locked Full length brush grommet Removable panel to wire access Junction connectors for electric			

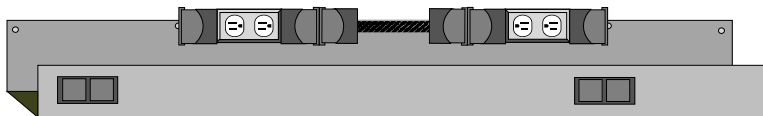
36W · cupboards



Circ Desk 36" Cabinets

		Height	
		Work Surface	Patron Side
SCC363714	36W STNL Cabinet, 1 Box, 2 Lateral Files, 37H	37H	37H
Includes: 2 full width lateral file drawer			
1 Full width box gang locked w/files			
Not available in 33H version			
Removable panel to wire access			
Junction connectors for electric			

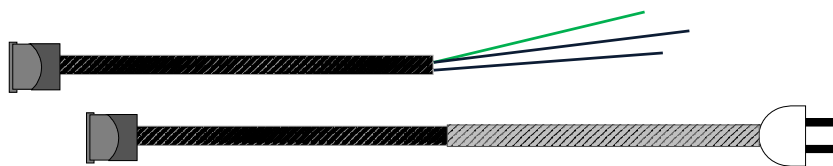
Electrical Accessories



Two duplex outlets w/ locations for up to 4 data ports, all in a black metal raceway. Included in all Task Desks.



Junction connectors for electric. Included in all cabinets to connect one unit to the next for continuous electrical connection



House connector, 1 included with desk assembly. Specify hardwire or plug connection. Hardwire will require an electrician on site.



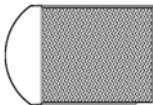
Full length brush grommet. Included with every Task Desk and cabinet at 33”h w/ patron ledge



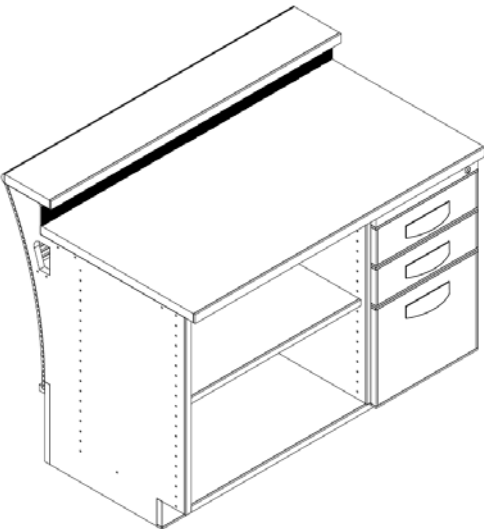
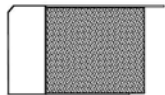
42W · cupboards

All 42" w cupboard units shall be 28" deep, by either 37" or 29H with 33" H patron ledge. All units shall have an opening for electrical wiring between adjoining units. The 33" patron ledges will provide access to the wire management trough with the use of 3" H brushes in aluminum channel. There are removable internal panels for full access to the wire management trough behind the shelves or drawer boxes of each configuration. These panels will be secured by the use of trim screws to allow for easy access and removal. The front panels will be constructed from Kercore in a concave radius. The veneer on the front section is to run horizontal. The face toe kick is finished in HPL with ½" x 1" solid lumber strips separating each detail. The work surfaces are continuous over equal height adjoining units in the longest lengths possible.

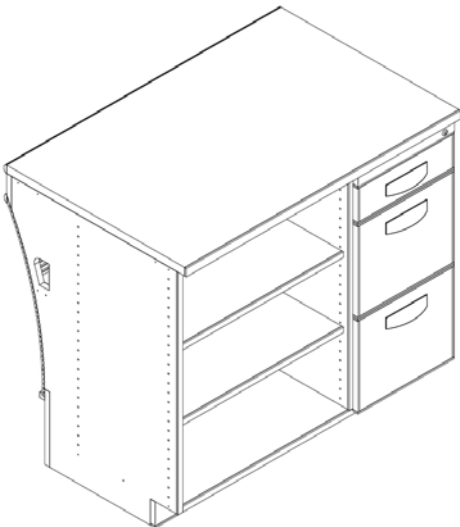
Sentinel Edge Band is a soft ¾" bull nose milled from solid lumber. The external edge captures both the HPL surface and the balancing paper on the bottom



Classic Edge Band is a squared 1/2" bevel milled from solid lumber. The external edge captures both the HPL surface and the balancing paper on the bottom



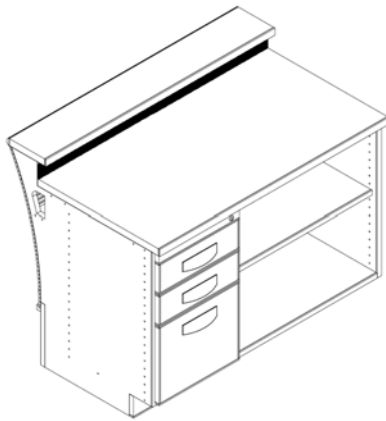
Circ Desk 42" Cabinets		Height	
		Work Surface	Patron Side
SCC423306	42W STNL Cabinet, 2 Box, 1 File w/ Open Shelves adjacent left, Patron Ledge Raceway Includes: 1 Full depth adj and 1 fxd. base shelf 2 Box and 1 file drawers, gang locked Full length brush grommet Removable panel to wire access Junction connectors for electric	29H	33H



Circ Desk 42" Cabinets		Height	
		Work Surface	Patron Side
SCC423706	42W STNL Cabinet, 1 Box, 2 File w/ Open Shelves adjacent left Includes: 2 Full depth adj and 1 fxd. base shelf 1 Box and 2 file drawers, gang locked Removable panel to wire access Junction connectors for electric	37H	37H

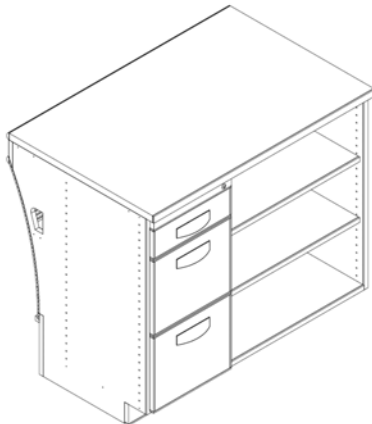


42W · cupboards



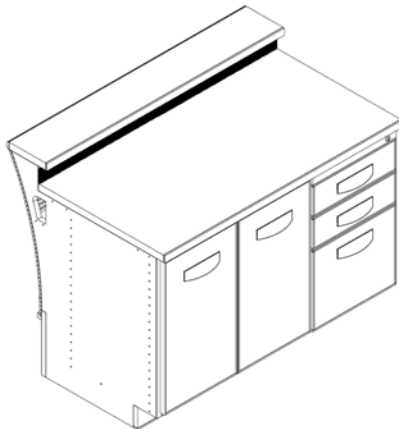
Circ Desk 42" Cabinets

		Height	
		Work Surface	Patron Side
SCC423307	42W STNL Cabinet, 2 Box, 1 File w/ Open Shelves adjacent right, Patron Ledge Raceway Includes: 1 Full depth adj and 1 fxd. base shelf 2 Box and 1 file drawer, gang locked Full length brush grommet Removable panel to wire access Junction connectors for electric	29H	33H



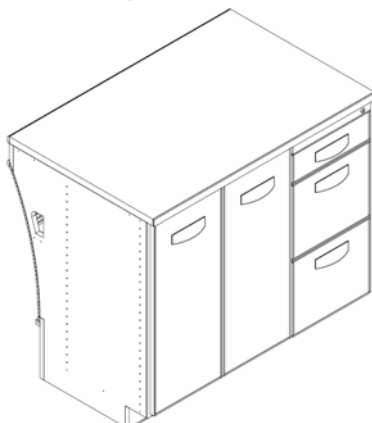
Circ Desk 42" Cabinets

		Height	
		Work Surface	Patron Side
SCC423707	42W STNL Cabinet, 1 Box, 2 File w/ Open Shelves adjacent right Includes: 2 Full depth adj and 1 fxd. base shelf 1 Box and 2 file drawer, gang locked Removable panel to wire access Junction connectors for electric	37H	37H



Circ Desk 42" Cabinets

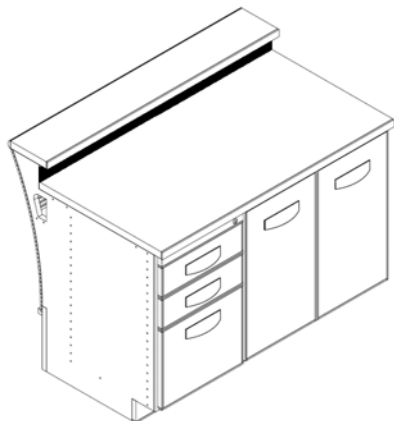
		Height	
		Work Surface	Patron Side
SCC423308	42W STNL Cabinet, 2 Box, 1 File w/ Closed Shelves adjacent left, Patron Ledge Raceway Includes: 1 Full depth adj and 1 fxd. base shelf behind double locking doors 2 Box and 1 file drawer, gang locked Full length brush grommet Removable panel to wire access Junction connectors for electric	29H	33H



Circ Desk 42" Cabinets

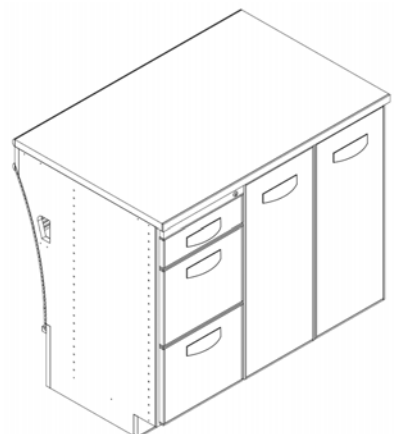
		Height	
		Work Surface	Patron Side
SCC423708	42W STNL Cabinet, 1 Box, 2 File w/ Closed Shelves adjacent left Includes: 2 Full depth adj and 1 fxd. base shelf behind double locking doors 1 Box and 2 file drawer, gang locked Removable panel to wire access Junction connectors for electric	37H	37H

42W · cupboards



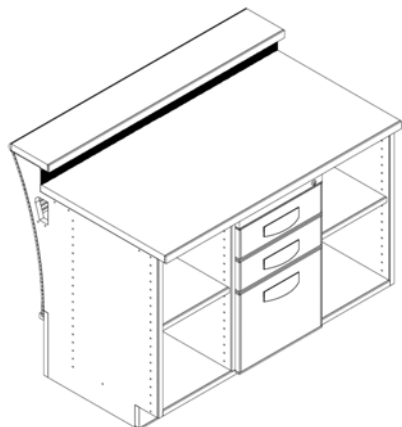
Circ Desk 42" Cabinets

		Height	
		Work Surface	Patron Side
SCC423309	42W STNL Cabinet, 2 Box, 1 File w/ Closed Shelves adjacent right, Patron Ledge Raceway Includes: 1 Full depth adj and 1fxd. base shelf behind double locking doors 2 Box and 1 file drawer, gang locked Full length brush grommet Removable panel to wire access Junction connectors for electric	29H	33H



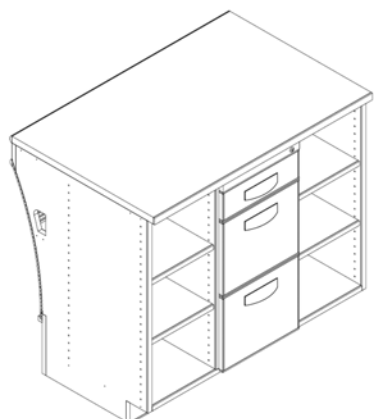
Circ Desk 42" Cabinets

		Height	
		Work Surface	Patron Side
SCC423709	42W STNL Cabinet, 1 Box, 2 File w/ Closed Shelves adjacent right Includes: 2 Full depth adj and 1fxd. base shelf behind double locking doors 2 Box and 1 file drawer, gang locked Removable panel to wire access Junction connectors for electric	37H	37H



Circ Desk 42" Cabinets

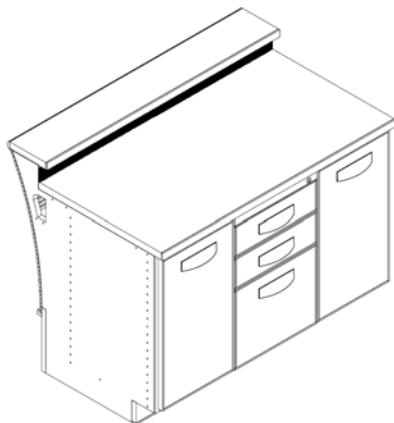
		Height	
		Work Surface	Patron Side
SCC423310	42W STNL Cabinet, Centered 2 Box, 1 File w/ Open Shelves left and right, Patron Ledge raceway Includes: 2 Small, full depth adj and 2 fxd. base shelf 2 Box and 1 file drawers, gang locked Full length brush grommet Removable panel to wire access Junction connectors for electric	29H	33H



Circ Desk 42" Cabinets

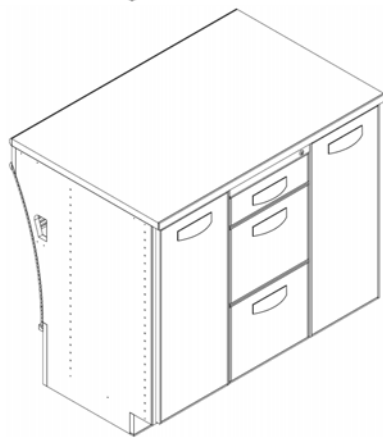
		Height	
		Work Surface	Patron Side
SCC423710	42W STNL Cabinet, Centered 1 Box, 2 File w/ Open Shelves left and right Includes: 4 Small, full depth adj and 2 fxd. base shelf 2 Box and 1 file drawers, gang locked Removable panel to wire access Junction connectors for electric	37H	37H

42W · cupboards



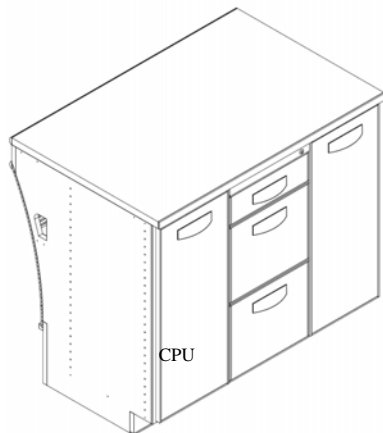
Circ Desk 42" Cabinets

		Height	
		Work Surface	Patron Side
SCC423311	42W STNL Cabinet, Centered 2 Box, 1 File w/ Closed Shelves hinged left and right, Patron Ledge raceway Includes: 2 Small full depth adj and 2 fxd. base shelf behind double locking doors 2 Box and 1 file drawer, gang locked Full length brush grommet Removable panel to wire access Junction connectors for electric	29H	33H



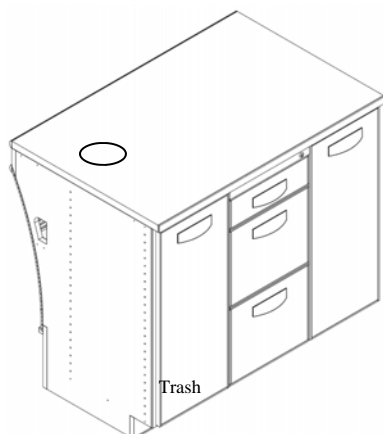
Circ Desk 42" Cabinets

		Height	
		Work Surface	Patron Side
SCC423711	42W STNL Cabinet, Centered 1 Box, 2 File w/ Closed Shelves hinged left and right Includes: 4 Small full depth adj and 2 fxd. base shelf behind double locking doors 1 Box and 2 file drawers, gang locked Removable panel to wire access Junction connectors for electric	37H	37H



Circ Desk 42" Cabinets

		Height	
		Work Surface	Patron Side
SCC423712	42W STNL Cabinet, Centered 1 Box, 2 File w/ Closed Shelves hinged right and CPU hinged left (SCC423713 = hinged right) Includes: 2 Full depth adj and 1 fxd. base shelf behind single locking door 1 Box and 2 file drawer, gang locked Adj. CPU holder behind locking door Not available in 33'H unit Removable panel to wire access Junction connectors for electric	37H	37H



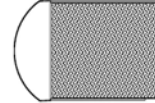
Circ Desk 42" Cabinets

		Height	
		Work Surface	Patron Side
SCC423714	42W STNL Cabinet, Centered 1 Box, 2 File w/ Closed Shelves hinged right and Trash Receptacle hinged left (SCC423715 = hinged right) Includes: 2 Full depth adj and 1 fxd. base shelf behind single locking door 1 Box and 2 file drawers, gang locked Trash can and 1 adj shelf behind locking door 6"dia Black trash grommet in work surface Not available in 33"H unit Removable panel to wire access Junction connectors for electric	37H	37H

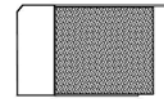
48W · cupboards

All 48" w cupboard units shall be 28" deep, by either 37" or 29H with 33" H patron ledge. All units shall have an opening for electrical wiring between adjoining units. The 33" patron ledges will provide access to the wire management trough with the use of 3" H brushes in aluminum channel. There are removable internal panels for full access to the wire management trough behind the shelves or drawer boxes of each configuration. These panels will be secured by the use of **trim screws** to allow for easy access and removal. The front panels will be constructed from Kercore in a concave radius. The veneer on the front section is to run horizontal. The face toe kick is finished in HPL with ½" x 1" solid lumber strips separating each detail. The work surfaces are continuous over equal height adjoining units in the longest lengths possible.

Sentinel Edge Band is a soft ¾" bull nose milled from solid lumber. The external edge captures both the HPL surface and the balancing paper on the bottom

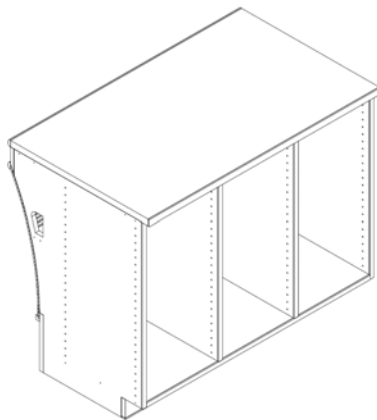


Classic Edge Band is a squared ½" bevel milled from solid lumber. The external edge captures both the HPL surface and the balancing paper on the bottom

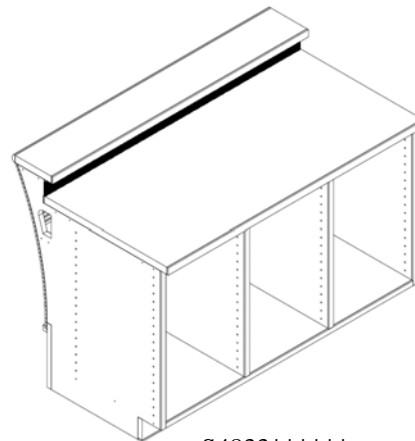


How to configure your 48" w Cupboards

1.) Select 37H or 33H Cabinet

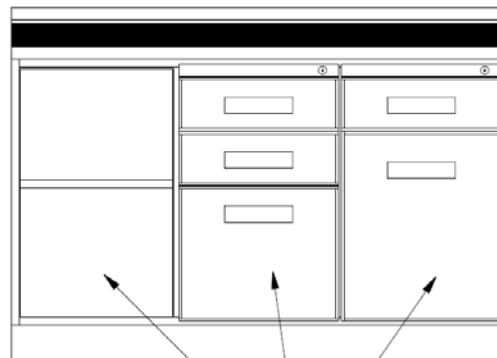
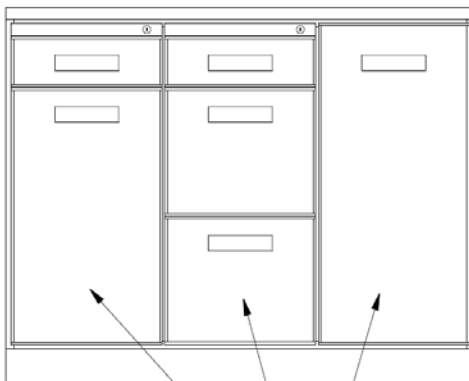


S4837*****



S4833*****

2.) Select the configurations needed and the order they should be located from left to right



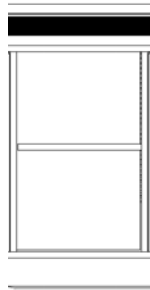
EXAMPLE:

S4837 65 45 25
S4837 XX XX XX

S4833 10 40 60
S4833 XX XX XX

48W · cupboards

Configuration Options for 33H Cupboards



10 Open Shelving

Single width
1 Full depth adj shelf



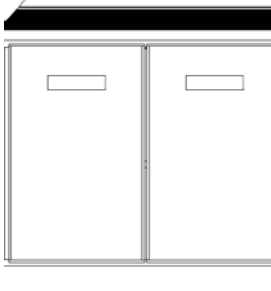
1000 Open Shelving

Double width
1 Full depth adj shelf



20 Closed Shelving

Single width
1 Full depth adj shelf
1 locking door (hinged left or right based on location)



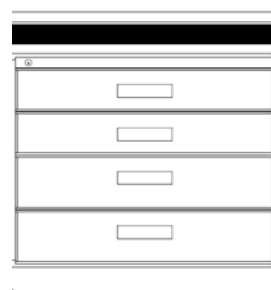
1200 Closed Shelving

Double width
1 Full depth adj shelf
Pair locking doors



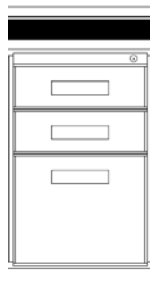
30 Drawer Storage

Single width
4 Box drawers
Gang lock



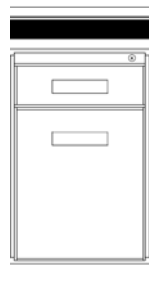
1300 Drawer Storage

Double width
4 Full width Box drawers
Gang lock



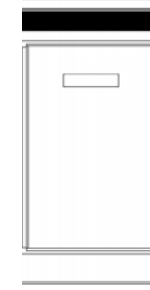
40 Drawer Storage

Single width
2 Box and 1 file drawers
Gang lock



60 Drawer / Door Storage

Single width
1 Box drawer, locking
1 Adj. shelf behind locking door (hinged left or right based on location)

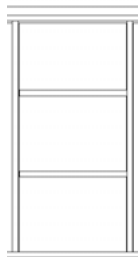


70 Trash Can Storage

Single width
1 6" Dia. Trash ring in work surface
1 locking door (hinged left or right based on location)

48W · cupboards

Configuration Options for 37H Cupboards



15 Open Shelving

Single width
2 Full depth adj shelf



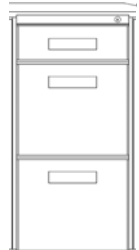
25 Closed Shelving

Single width
2 Full depth adj shelf
1 locking door (hinged left or right based on location)



35 Drawer Storage

Single width
5 Box drawers
Gang lock



45 Drawer Storage

Single width
1 Box and 2 file drawers
Gang lock



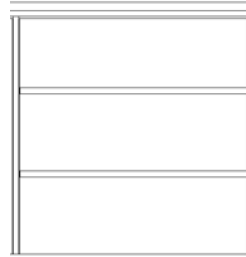
55 CPU Storage

Single width
Adj. CPU bracket
Behind locking door (hinged left or right based on location)



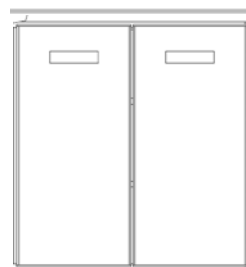
65 Drawer / Door Storage

Single width
1 Box drawer, locking
2 Adj. shelf behind locking door (hinged left or right based on location)



1050 Open Shelving

Double width
2 Full depth adj shelf



1250 Closed Shelving

Double width
2 Full depth adj shelf
Pair locking doors



1350 Drawer Storage

Double width
5 Full width Box drawers
Gang lock



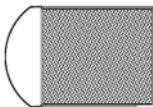
75 Trash Can Storage

Single width
1 Full depth adj shelf
1 6" Dia. Trash ring in work surface
1 locking door (hinged left or right based on location)

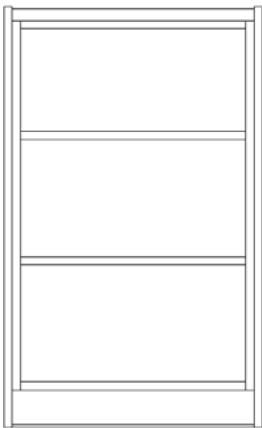
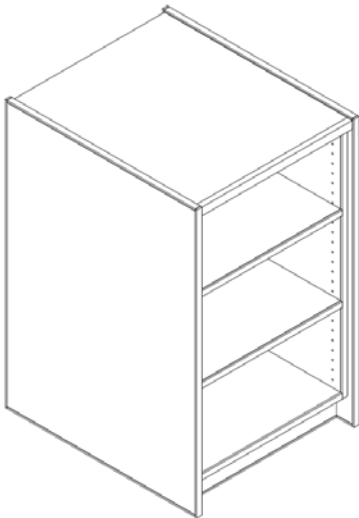
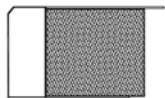
service · towers

All service towers shall be 24" wide and 28" deep, by 39"H. These units can be used to end a run or transition heights without added end panels. All units have an opening for electrical wiring between adjoining units. The front panel and top of the service tower will be finished in the same laminate selected for the toe kicks from the other components of the desk assembly. The veneer on the remainder section is to run horizontal. The service tower is free standing and at 39H it does not share adjoining work surfaces. This allows the towers to be used between height transition or at the end of and assembly without the need for an applied finished end panel.

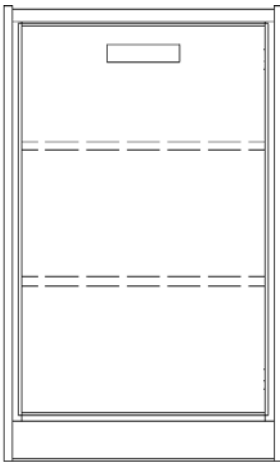
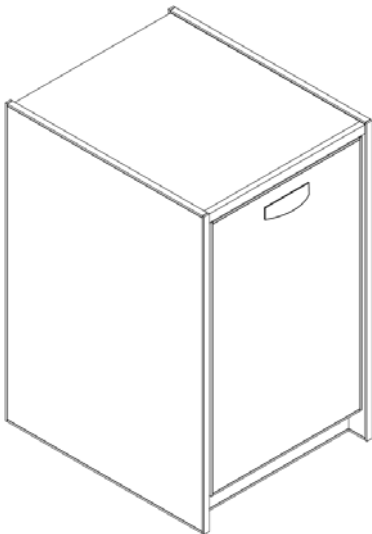
Sentinel Edge Band is a soft 3/4" bull nose milled from solid lumber. The external edge captures both the HPL surface and the balancing paper on the bottom



Classic Edge Band is a soft 3/4" bull nose milled from solid lumber. The external edge captures both the HPL surface and the balancing paper on the bottom



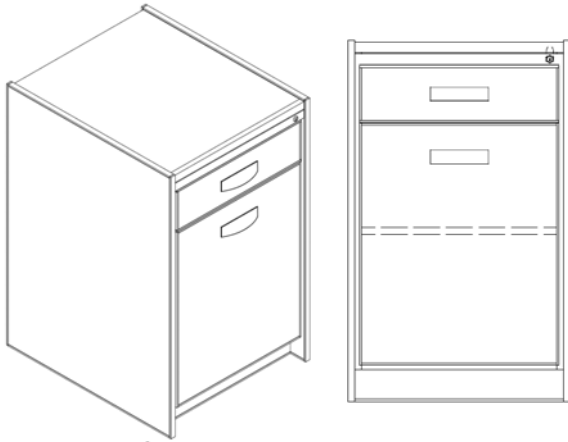
Circ Desk Service Towers		Height Work Surface
SST243901	STNL Service Tower, Open w/ 2 adj / 1fxd shelves Includes: 2 Full depth adj and 1 fxd. base shelf Pass through grommets located based on location in complete desk assembly Junction connectors for electric	39H



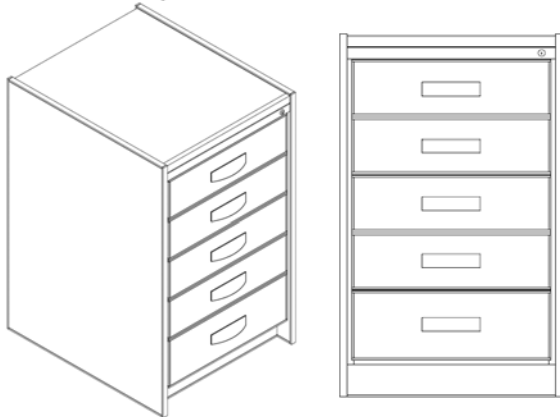
Circ Desk Service Towers		Height Work Surface
SST243902	STNL Service Tower, Closed w/ 2 adj / 1fxd shelves Includes: 2 Full depth adj and 1 fxd. base shelf behind single locking door Pass through grommets located based on location in complete desk assembly Junction connectors for electric	39H



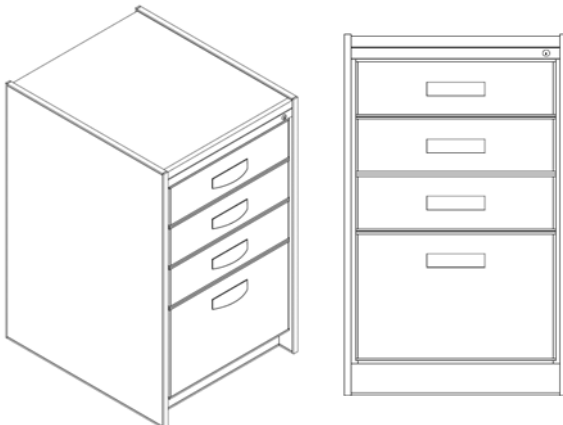
service · towers



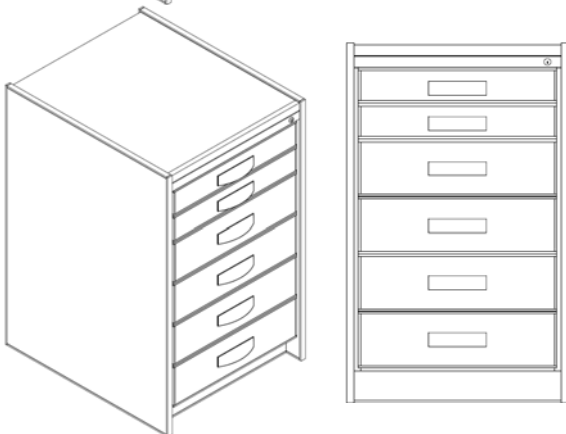
Circ Desk Service Towers		Height Work Surface
SST243904	STNL Service Tower, Box Drawer and Door	39H
Includes: 1 Full depth adj and 1 fxd. base shelf behind a single locking door		
1 Locking small box drawer		
Pass through grommets located based on location in complete desk assembly		
Junction connectors for electric		



Circ Desk Service Towers		Height Work Surface
SST243905	STNL Service Tower, 5 Box Drawer	39H
Includes: 5 locking small box drawers		
Pass through grommets located based on location in complete desk assembly		
Junction connectors for electric		

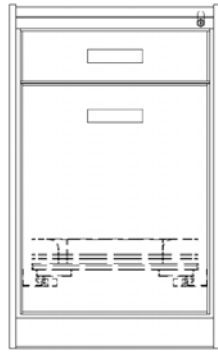
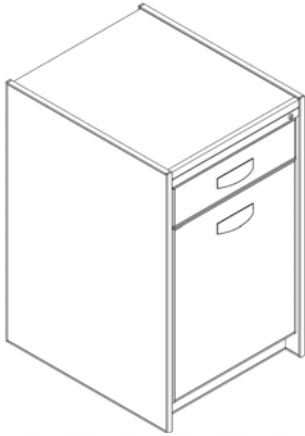


Circ Desk Service Towers		Height Work Surface
SST243915	STNL Service Tower, 3 Box and 1 Double box Drawer	39H
Includes: 3 Locking small box drawers and 1 large box drawer		
Pass through grommets located based on location in complete desk assembly		
Junction connectors for electric		



Circ Desk Service Towers		Height Work Surface
SST243916	STNL Service Tower, Locking Cash, Pencil and 4 Box drawers	39H
Includes: 1 Locking drawer with 5 cash and 5 coin insert		
1 Removable pencil storage insert		
Pass through grommets located based on location in complete desk assembly		
Junction connectors for electric		

service · towers

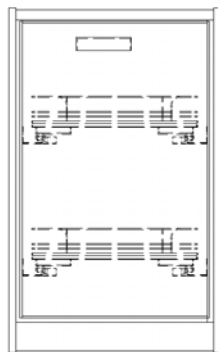
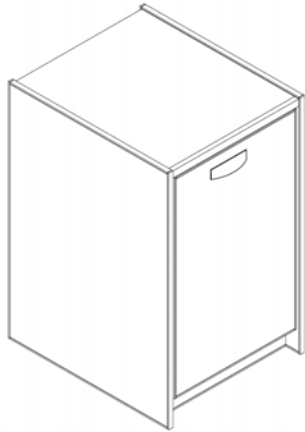


Circ Desk Service Towers

**Height
Work
Surface**

- SST243918** STNL Service Tower, 1 Box Drawer and 1 Pull-out Trays behind a Single Door
- Includes: 1 Full extension pull-out tray with sides behind a single locking door
1 Locking small box drawer
Pass through grommets located based on location in complete desk assembly
Junction connectors for electric

39H

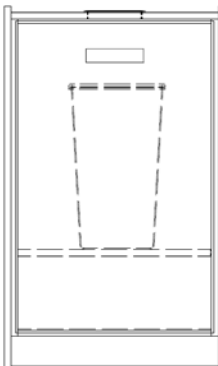
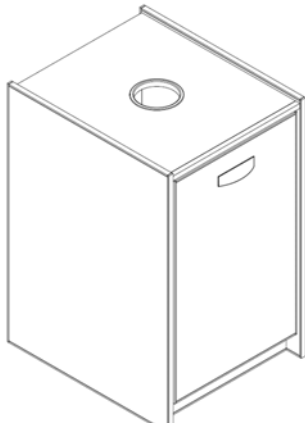


Circ Desk Service Towers

**Height
Work
Surface**

- SST243919** STNL Service Tower, 2 Pull-out Trays behind a Single Locking Door
- Includes: 2 Full extension pull-out tray with sides behind a single locking door
Pass through grommets located based on location in complete desk assembly
Junction connectors for electric

39H

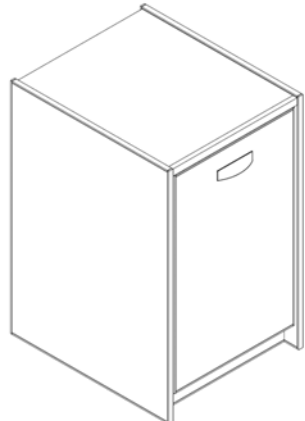


Circ Desk Service Towers

**Height
Work
Surface**

- SST243920** STNL Service Tower, Trash Receptacle with Grommet and Trash Can
- Includes: 1 Full depth adj and 1 fxd. base shelf behind a single locking door
6" Black trash grommet and black tall trash can
Pass through grommets located based on location in complete desk assembly
Junction connectors for electric

39H



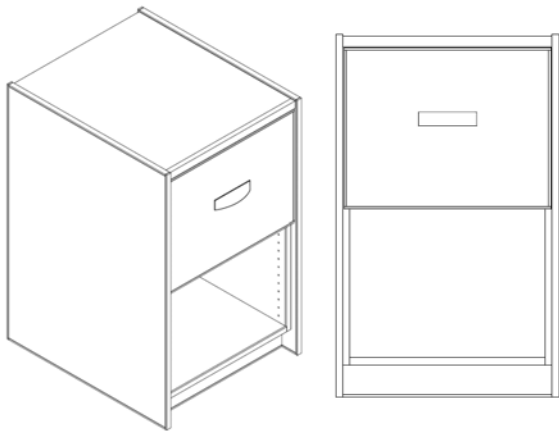
Circ Desk Service Towers

**Height
Work
Surface**

- SST243921** STNL Service Tower, CPU Tower Storage
- Includes: 1 Full depth adj and 1 fxd base shelf
1 Adjustable CPU holder with swivel and pull-out features
Pass through grommets located based on location in complete desk assembly
Junction connectors for electric

39H

service · towers



Circ Desk Service Towers

		Height Work Surface
SST243923	STNL Service Tower, Book Drop Drawer	39H
Includes: 1 Deep full extension Drawer with heavy duty locking slides and 3" foam cushion Black metal book drop is in the front panel for patron access Pass through grommets located based on location in complete desk assembly Junction connectors for electric		

Applied End Panels for transitions and layout ends

SEP3037	End Panel for 37H unit
SEP3033	End Panel for 33H unit
SAT3037	Transition Panel for 37H unit w/ pass through

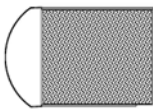


90 degree · corners

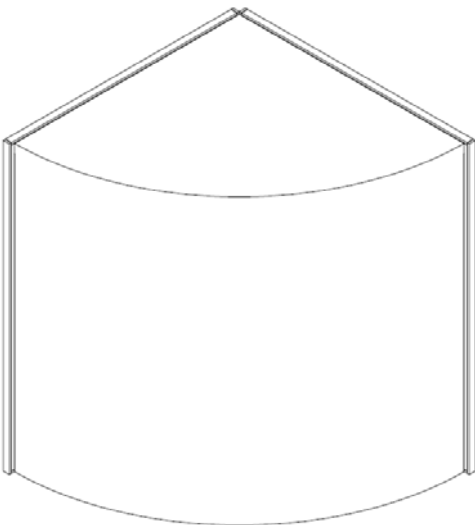
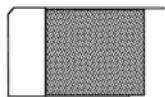
All corner units shall be 28" deep, by either 37" or 29H . All units shall have an opening for electrical wiring between adjoining units. The curved front panels will be constructed from Kerfcore in a 90- degree radius. All front panels on the simple corners are laminated with HPL matching the toe kick of the other units. The bi-level functional corner is constructed with horizontal grain veneers with a horizontal decorative HPL strip to match the adjoining units.

Select from the inserts on page 21 for the staff side of the functional bi-level corner.

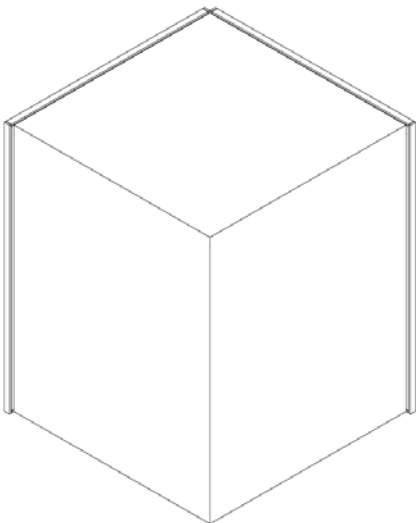
Sentinel Edge Band is a soft 3/4" bull nose milled from solid lumber. The external edge captures both the HPL surface and the balancing paper on the bottom



Classic Edge Band is a soft 3/4" bull nose milled from solid lumber. The external edge captures both the HPL surface and the balancing paper on the bottom



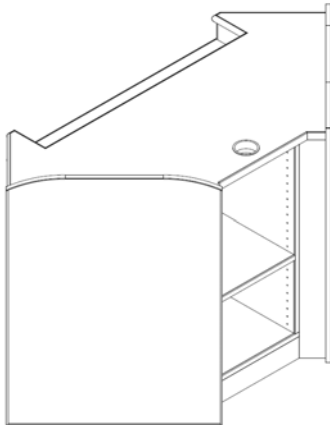
90-Degree Round Corners		Height	
		Work Surface	Patron Side
SCN303387	STNL Desk Corner Unit, 90-Degree Radius front, HPL top and Front	33H	33H
Includes: Junction connectors for electric			
Also Available:			
SCN303787	STNL Desk Corner Unit, 90-Degree Radius front, HPL top and Front	37H	37H



90-Degree Square Corners		Height	
		Work Surface	Patron Side
SCN303385	STNL Desk Corner Unit, 90-Degree Square front, HPL top and Front	33H	33H
Includes: Junction connectors for electric			
Also Available:			
SCN303785	STNL Desk Corner Unit, 90-Degree Square front, HPL top and Front	37H	37H



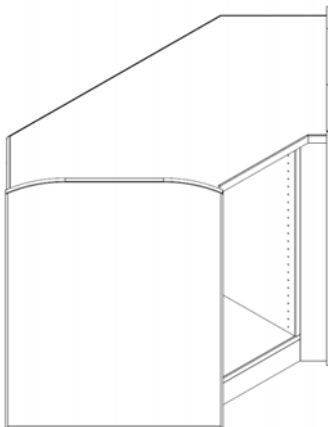
functional · corners



Functional Corner

**Height
Work
Surface**

SCN303781**	STNL On-Line Monitor Stand w/ Storage and Keyboard Ledge	37H
Includes: 3" Grommet in upper surface and 2" dia grommet in lower surface Space on Task side for one of the storage units below Pass through grommets located based on location in complete desk assembly Junction connectors for electric		



Functional Corner

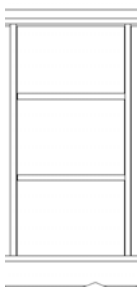
**Height
Work
Surface**

SCN303783**	STNL Functional Corner Storage	37H
Includes: Space on Task side for one of the storage units below Pass through grommets located based on location in complete desk assembly Junction connectors for electric		

Also Available:

SCN303383**	STNL Functional Corner Storage	33H
-------------	--------------------------------	-----

Inserts for above corners



15 Open Shelving

Single width
2 Full depth adj shelf



25 Closed Shelving

Single width
2 Full depth adj shelf
1 locking door (hinged left or right based on location)



35 Drawer Storage

Single width
5 Box drawers
Gang lock



45 Drawer Storage

Single width
1 Box and 2 file drawers
Gang lock



55 CPU Storage

Single width
Adj. CPU bracket
Behind locking door (hinged left or right based on location)



65 Drawer / Door Storage

Single width
1 Box drawer, locking
2 Adj. shelf behind locking door (hinged left or right based on location)

computer · carrels

Desk Top: Individual desktops shall be a minimum of 1-1/4" thick, 45lbs industrial grade particle board core. Solid lumber band shall be a single convex profile known as the Sentinel edge. Top surfaces shall be .050" thick high pressure laminate and shall be used with an appropriate backer sheet. Optional top materials include Corian, Marmoleum and our exclusive Paper Stone Tops.

Raceway Construction: All single and double faced carrels are configured from a center structural raceway constructed of 3/4" thick plywood with face veneers, fully assembled and banded with 1/8" solid lumber. Joints are screwed, glued, doweled and/or mechanically fastened.

End Panels: Finished end panels provided with both the single faced and double faced starter carrel shall be constructed from 1" thick plywood with face veneers with an 8" HPL detail at the bottom of the panel and have inserts set in the panel to accept bolts run through the raceway for a metal –to – metal connection. The top of the panel shall be arched and banded with 1/8" solid lumber with sides sanded and eased.

Adder Panels: Finished adder panels provided with both the single faced and double faced adder carrel shall be constructed from 1" thick plywood with face veneers and drilled for through bolt assembly. The top of the panel shall be arched and banded with 1/8" solid lumber with sides sanded and eased.

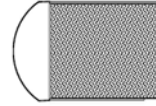
Metal Cap Assembly: The raceway is covered with a metal cap assembly with removable top for easy access to all wire management and standard electrical and data jack locations. All carrels are provided standard with 1 duplex electric outlet and 2 data locations per side, connector cables and a house power entry cable for fully electrified runs of carrels.

Panel glides: Each end and adder panel is provided with adjustable leveling glides.

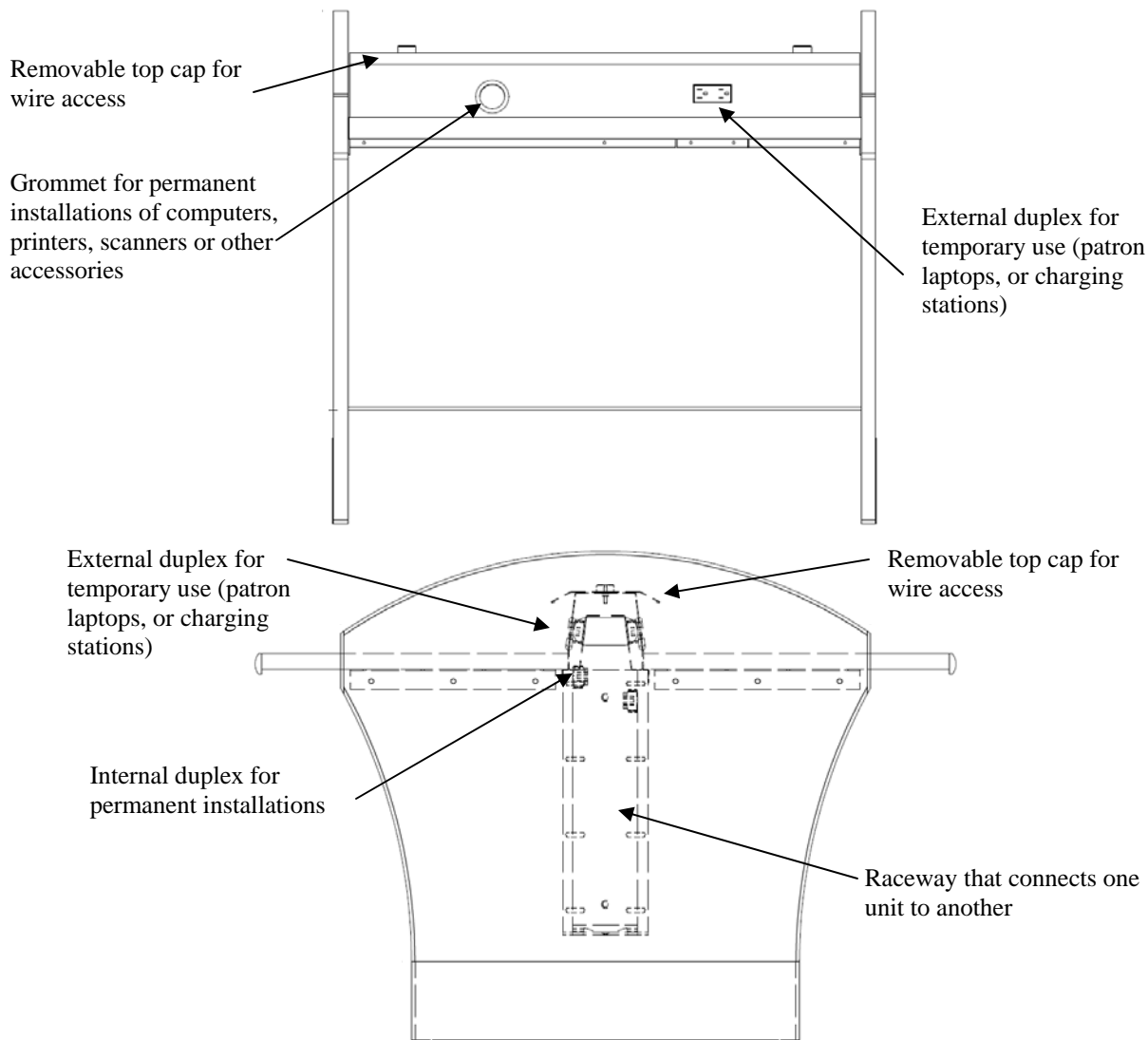
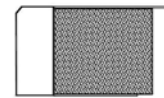
computer · carrels

All Carrel units shall be double faced or single faced, starter and adder, with a work surface at 29H. All units shall have an opening for electrical wiring between adjoining units in a run. This area will include 2 duplex outlets per face accessible from outside the raceway and 2 duplex outlets inside the raceway for both temporary and permanent uses. all mounted on 16 gauge , silver metal raceway. The removable top cap will provide access to the wire management trough. The end panels will be constructed from 1" thick veneer plywood with solid edge banding and a decorative inlaid HPL. Unlike the circulation desk the veneer on these section is to run vertical. Each starter included the final plug for each run of carrels—number of units in a run is limited by the number of outlets per circuit.

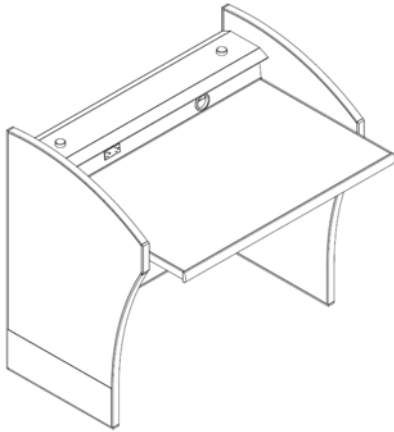
Sentinel Edge Band is a soft 3/4" bull nose milled from solid lumber. The external edge captures both the HPL surface and the balancing paper on the bottom



Classic Edge Band is a squared 1/2" bevel milled from solid lumber. The external edge captures both the HPL surface and the balancing paper on the bottom



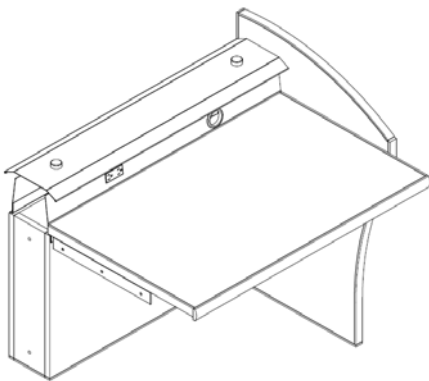
computer · carrels



Computer Carrels, Single Faced, Sit-down

		Height	
		Work Surface	End Panel
SCS3629S	36W STNL Computer Carrel, Single Faced, Starter	29H	37H

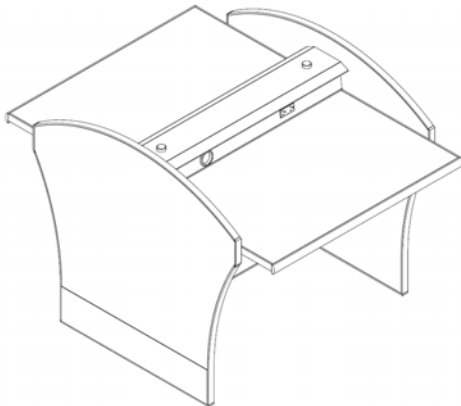
Includes: 1 Internal duplex and 1 external duplex
Grommet access
House connector (hardwire or plug version)
Removable panel top cap
Junction connectors for electric



Computer Carrels, Single Faced, Sit-down

		Height	
		Work Surface	End Panel
SCS3629A	36W STNL Computer Carrel, Single Faced, Adder	29H	37H

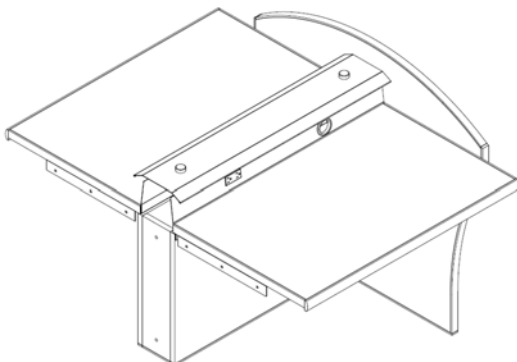
Includes: 1 Internal duplex and 1 external duplex
Grommet access
Removable panel top cap
Junction connectors for electric



Computer Carrels, Double Faced, Sit-down

		Height	
		Work Surface	End Panel
SCD3629S	36W STNL Computer Carrel, Double Faced, Starter	29H	37H

Includes: 2 Internal duplex and 2 external duplex
2 Grommet access
2 House connector (hardwire or plug version)
Removable panel top cap
Junction connectors for electric

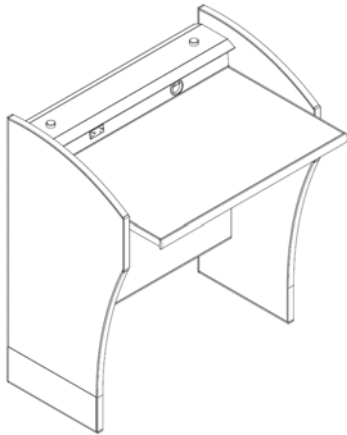


Computer Carrels, Double Faced, Sit-down

		Height	
		Work Surface	End Panel
SCD3629A	36W STNL Computer Carrel, Double Faced, Adder	29H	37H

Includes: 2 Internal duplex and 2 external duplex
2 Grommet access
Removable panel top cap
Junction connectors for electric

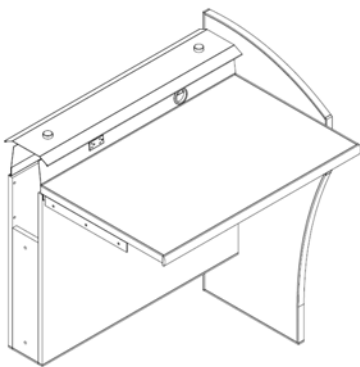
computer · carrels



Computer Carrels, Single Faced, Stand-up

Height	
Work Surface	End Panel

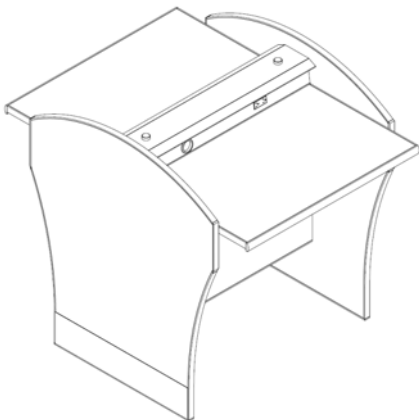
SCS3639S	36W STNL Computer Carrel, Single Faced, Starter	39H	47H
Includes: 1 Internal duplex and 1 external duplex Grommet access House connector (hardwire or plug version) Removable panel top cap Junction connectors for electric			



Computer Carrels, Single Faced, Stand-up

Height	
Work Surface	End Panel

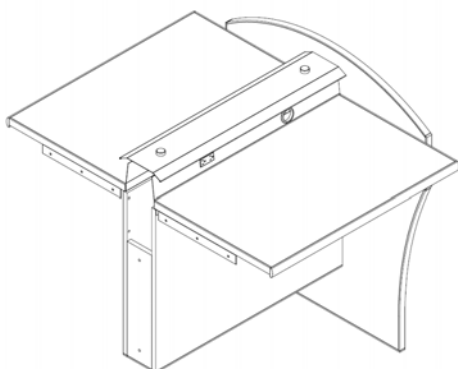
SCS3639A	36W STNL Computer Carrel, Single Faced, Adder	39H	47H
Includes: 1 Internal duplex and 1 external duplex Grommet access Removable panel top cap Junction connectors for electric			



Computer Carrels, Double Faced, Stand-up

Height	
Work Surface	End Panel

SCD3639S	36W STNL Computer Carrel, Double Faced, Starter	39H	47H
Includes: 2 Internal duplex and 2 external duplex 2 Grommet access 2 House connector (hardwire or plug version) Removable panel top cap Junction connectors for electric			



Computer Carrels, Double Faced, Stand-up

Height	
Work Surface	End Panel

SCD3639A	36W STNL Computer Carrel, Double Faced, Adder	39H	47H
Includes: 2 Internal duplex and 2 external duplex 2 Grommet access Removable panel top cap Junction connectors for electric			

reading · tables

Table tops: All tabletops shall be a minimum of 1-1/4" thick particle board core. Solid lumber edge band shall be a single convex profile known as the Sentinel edge. Edge band shall receive a radius on all corners of tables. All 29" high tables shall meet A.D.A. requirements. Top surfaces are .050" thick high pressure laminate (HPL) and shall be used with an appropriate backer sheet. Optional top materials include Corian, Marmoleum and our exclusive Paper Stone Tops.

Table Legs: Hydro formed, arched legs are 16 ga steel with an 11 ga steel plate. Powder coated in standard Stardust Silver or Tech Black (other colors available with up-charge).

Table Aprons: Each table is supplied with the appropriate rail and stretcher combination to fit the shape and size of the table. These rails and stretchers sit below the counter tops and are fully welded to the legs. 3-way and 4-way hubs are provided based on the configuration of the table. These hubs are constructed of 16 ga steel and allow the rails and stretchers to connect.

Leg Attachment: The legs, rail and stretcher assembly is attached to the underside of the table top with the use of 1" long #12 pan headed, particle board machine screws, 4 per leg and at each support hub along the rails and stretchers.

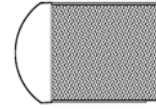
Glides: To provide instant leveling on uneven floors and to permit an upward height adjustment of 1" from the basic height, each leg is equipped with an adjustable glide, at 2-1/2" in diameter.



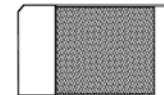
reading · tables

All reading tables come with the hydro-formed, arched legs in either Stardust Silver or Tech Black powder coat. With this special leg all tables are limited to 29"H. Table tops include a high pressure laminated top surface with external wood edge band and balancing backer sheet. Adjustable glides allow the tables to be leveled on uneven floors. Available in round, square or rectangle top sizes perfectly suited to the leg base shape and configuration.

Sentinel Edge Band is a soft 3/4" bull nose milled from solid lumber. The external edge captures both the HPL surface and the balancing paper on the bottom



Classic Edge Band is a squared 1/2" bevel milled from solid lumber. The external edge captures both the HPL surface and the balancing paper on the bottom



Reading Tables, Round and Square

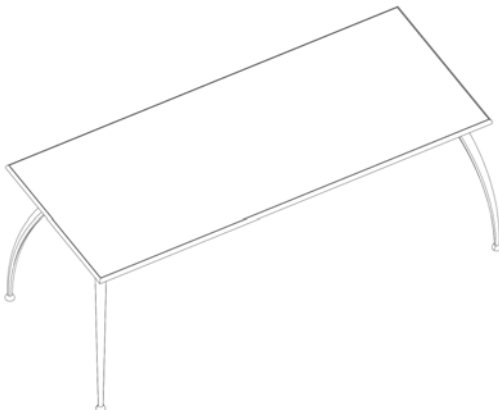
**Height
Work
Surface**

ROUND

STBL42DIA29 42 Dia SNTL Reading Table, Round	29H
STBL48DIA29 48 Dia SNTL Reading Table, Round	29H

SQUARE

STBL4242T29 42D x 42W SNTL Reading Table, Square	29H
STBL4848T29 48D x 48W SNTL Reading Table, Square	29H



Reading Tables, Rectangle

**Height
Work
Surface**

STBL3060T29 30D x 60W SNTL Reading Table, Rectangle	29H
STBL3072T29 30D x 72W SNTL Reading Table, Rectangle	29H
STBL3660T29 36D x 60W SNTL Reading Table, Rectangle	29H
STBL3672T29 36D x 72W SNTL Reading Table, Rectangle	29H
STBL4872T29 48D x 72W SNTL Reading Table, Rectangle	29H
STBL4884T29 48D x 84W SNTL Reading Table, Rectangle	29H
STBL4896T29 48D x 96W SNTL Reading Table, Rectangle	29H



PALADIN CASEWORKS INC

1607 S. Main Street

South Bend IN 46613

Phone: 574-233-8778

Fax: 574-236-6050

Web: www.paladincaseworks.com

Email: info@paladincaseworks.com

