

# PRIMARIES

Library Furniture





## Table of Content

Terms and Conditions	Page 3
Colorich Color Selections	Page 4
Display Shelving—Single faced	Page 6
Bin Storage Shelving—Single Faced	Page 7
Bin Storage Shelving—Double Faced	Page 8
Activity Tables—Mobile	Page 10
Chairs and Stools	Page 11
Color Selections for Chairs	Page 11



# Terms and Conditions

## Quotes

Paladin Caseworks is happy to quote library furniture built to custom requirements. For assistance in quoting any project please contact

Trisha Potter

Phone: 572-233-8778

Email: trisha@paladincaseworks.com

## Terms of Sale

To those distributors with approved credit, all invoices will be due 1% 10, Net 30 days, F.O.B. Shipping Point. All other accounts will be Net Cash before shipment. Distributors must be established with net 30 terms prior to participating in any local, state or federal cooperative bid. Accounts not paid within terms will be assessed 1.5% interest per month. Any account that exceeds 90 days will be placed on credit hold. Any order of \$50,000 net must include a 30% deposit.

## Changes to Orders

Changes to orders already acknowledged are subject to a fee covering the cost of making the requested change, with a minimum charge of \$65.00.

## Cancellation of Orders

All acknowledged orders are considered firm and cannot be canceled without written authorization from Paladin Caseworks. A cancellation fee will be calculated based upon cost incurred by Paladin Caseworks with a minimum charge of \$65.00.

## Return Authorization

Paladin Caseworks will honor a 30 day return policy. All products returned must be free from defect and will be subject to a 20% restocking fee with a minimum charge of \$65.00. All freight charges will be borne by the buyer. All returns must have a Return Authorization number issued prior to the return of the product. Contact Paladin Caseworks Customer Service department at 574.233.8778 for return authorization. Paladin Caseworks cannot accept returns of any special or custom made products including special finishes and laminates (any laminate other than our standard wood grain laminates). After 30 days, goods can be returned only as provided for in Paladin Caseworks standard warranty.

## Storage

Paladin Caseworks cannot offer storage on site for any orders. We can hold an order up to 5 working days after original due date to facility coordination. Storage for any length of time over those 5 working days will be subject to immediate invoicing and off site storage fees including truck rental to move product to off-site facility.

## Freight Damage and Shortages

All freight damages on prepaid and add shipments must be reported to Paladin Caseworks within 7 days of delivery.

All shortages must be reported to Paladin Caseworks within 30 days of delivery. Any freight damage or shortage reported after these dates will be at the expense of the dealer including but not limited to materials and freight charges.

## Warranty

Paladin Caseworks shelving and case goods are warranted against defects in materials and workmanship for 12 years from the date of delivery. During the warranty period, Paladin's sole obligation, and the customer's sole remedy, will be the repair or replacement of the defective product. This determination will be at the sole discretion of Paladin Caseworks. Warranties on hardware, including, but not limited to, hinges, locks, lift columns, monitor mounts, solid surface and laminate materials, are limited to the warranties provided by those specific manufacturers.

Specifically excluded from any warranty claim is damage caused by abusive or abnormal usage, water damage, damage from solvents, exposure to extreme conditions, alterations or modifications not performed at the factory, or failure to follow any distributed instructions for use or assembly.

Furthermore, this warranty does not extend to natural variations in wood grain or natural marks characteristic of the species, color variations within natural materials, or normal wear and tear. This warranty is extended to the original purchaser and is not transferable to any subsequent purchaser. Purchaser shall indemnify and hold harmless Paladin Caseworks, its officers, employees, and agents from any loss, damage, or claim arising from the Purchaser's own design, specifications, or materials supplied by the Purchaser.

No corporate body or individual is authorized to incur or assume any liability in Paladin Casework's behalf in connection with the sale or installation of Paladin's products except as stated above.

This is the complete warranty provided by Paladin Caseworks. There are no other warranties, expressed or implied, including any warranty of merchantability, fitness for a particular purpose,

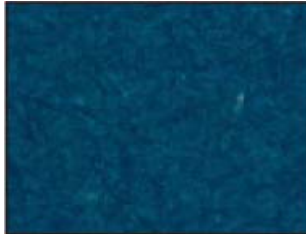
## Product Images

There are three ways a dealer may obtain images of products by Paladin Caseworks for marketing purposes.

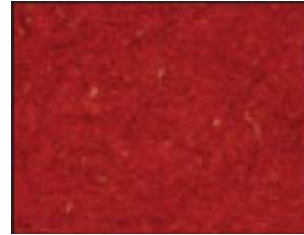
- 1.) Contact Paladin Caseworks for available images
- 2.) If image is not available, Paladin Caseworks will provide products at no charge, if dealer agrees to share the image for Paladin Caseworks' use in and with other catalogs.
- 3.) If the dealer requires images unique to their catalog or other marketing materials, product can be purchased at a 30% discount and are liable for all freight charges. Product is not returnable and non-refundable.



## Colorich Selections



Blue



Red



Orange



Yellow



Green

Colorich is a through-color wood fiber panel. Individual fibers are impregnated with organic dye and chemically bonded by resin specially developed to give the panel its special properties. Colorich fits somewhere between a wood fiber board and a solid surface, because of the specially formulated resin within the board.



Natural Baltic Birch



Edge Detail









# PRIMARIES

## Single Faced Storage



KRMM3313S



KRMM3313A

Item #	Description	W	D	H	Wt	Frnt. Class
KRMM3313S	Magnetic, Dry Erase Unit, SF starter, 2 end panels	33-3/4	12	33		150
KRMM3313A	Magnetic, Dry Erase Unit, SF adder, 1 end panel	33	12	33		150

Use the magnetic marker board to announce upcoming story times or allow for creative expression from your patrons. This style of single faced units include 3 storage bins with lids (may vary based on availability) and a top shelf for display. The ledge under the dry erase board can hold markers or be used as an easel during story time. Select end panel colors and the top shelf color.



KRBD3313S



KRBD3313A

Item #	Description	W	D	H	Wt	Frnt. Class
KRBD3313S	Big Book Display Unit, SF starter, 2 end panels	33-3/4	12	33		150
KRBD3313A	Big Book Display Unit, SF adder, 1 end panel	33	12	33		150

This 3-tiered, single faced, display makes a great place to show special Children's big books in a face out position. Mix and match the three different single faced units for a full wall run. Order a minimum of 1 starter and as many adders as you have room. Select end panel colors and the front face color.



## Single Faced Storage



KRBB3313S



KRBB3313A

Item #	Description	W	D	H	Wt	Frnt. Class
KRBB3313S	Book Bin Storage Unit , SF starter, 2 end panels	33-3/4	12	33		150
KRBB3313A	Book Bin Storage Unit, SF adder, 1 end panel	33	12	33		150

With a front angle on both the upper and lower bins, even the smallest of patrons can flip through your book collection. This unit can easily mix and match with the other single faced units. Select end panel colors and a front face color for each bin.



# PRIMARIES

## Double Faced Storage



KRFS3326S



KRFS3326SMOB

Item #	Description	W	D	H	Wt	Fr. Class
KRFS3326S	Double Faced Big Book Storage Unit, Starter	33-3/4	26	33		150
KRFS3326A	Double Faced Big Book Storage Unit, Adder	33	26	33		150
KRFS3326SMOB	MOBILE Double Faced Big Book Storage Unit	33-3/4	26	37		150

Available in a stationary version or with casters for mobility.

When ordering the stationary units you can select from starters for a single free standing unit or order the starter with several of the adders of a continuous run of storage. Both the starter and the adder come with 2 top bins, one on each side and 2 picture book shelves with wire dividers on the bottom of each side. The bottom shelves allow for up to 60 books per side.

For more flexibility with the option to relocate easily, select the mobile unit. While this unit is not available as an adder for longer runs, they can still be placed side-by-side. The mobile units offer the same great storage as the stationary version.

Specify the end panel color selection and a front face color selection for the face of each bin.









## Mobile Activity Tables



Item #	H	Item #	H	Description	W	D	Wt	Frnt. Class
KRTB4242T27	27	KRTB4242T25	25	Mobile Activity Table,	42	42		70
KRTB42D27	27	KETB42D25	25	Mobile Activity Table, Round	42dia			70
KRTB4848T27	27	KRTB4848T25	25	Mobile Activity Table, Square	48	48		70
KRTB48D27	27	KRTB48D25	25	Mobile Activity Table, Round	48dia			70
KRTB3252V27	27	KRTB3252V27	25	Mobile Activity Table, Oval	52	32		70

Outfitted with 2-1/2"H furniture casters and metal saddles, these activity tables will hold up to relocation over and over again, all day long. The casters are all locking casters with a full 360-degree turning radius. The Colorich tops are durable color impregnated MDF. Select the top color from the Colorich selection. Legs are natural birch.



# PRIMARIES

## Chairs and Stools



Item #	H	Item #	H	Description	Wt	Frt. Class
KRCR12	12	KRCR15	14	Children's Chair, Wood seat and back		70
KR12	12			Stacking Stool, sold in pairs of the same color		70

Perfectly sized chairs and stools mix and match with the 25 and 27"H tables. Both stack to easily store or relocate. Chairs are offered with stained leg and back supports and natural seat and back pieces. Colors available below. Stools are made from the Colorich material in the standard 6 colors





# PRIMARIES

## Book Spinners and Sign Options



Use fun neon dry-erase markers on the acrylic!  
Markers not included

Item #	Description	W	D	H	Wt	Fr. Class
IDI1800	Children's Book Spinner, Single Color, Purple Base, Choose Colorich option	20	20	57		150
IDI1820	Children's Book Spinner, Multi-color, Purple Base (no color selection option)	20	20	57		150
IDI1830	Sign, Double faced, "Once upon a time", letters silver	18	3/4	7		150
IDI1832	Sign, Double faced, "Story Time"	18	2-1/4	7		
IDI1834	Sign, Double faced, "READ"	18	2-1/4	7		

Available in single Colorich color or in a multi-color option. The base is laminated in a vibrant purple to match any combination of colors for a bright and inviting display.

Pockets are oversized for large picture books or graphic novels. Each spinner has 12 pockets with clear inside area of 10w x 3d x 14h. The clear acrylic is 1/4" poly carbonate for long lasting, durable display.

Signs are sold separately and easily installed.





Paladin Caseworks Inc  
1607 S. Main Street  
South Bend IN 46613

Phone: 574-233-8778

[paladincaseworks.com](http://paladincaseworks.com)  
[info@paladincaseworks.com](mailto:info@paladincaseworks.com)

