



# PHOTO location GUIDE

LANGHAM, SASKATOON, SK & AREA

YOUR SESSION LOCATION, SEASON AND TIME OF DAY WILL IMPACT THE OVERALL FEEL OF YOUR FINAL IMAGES. I HAVE CREATED THIS GUIDE TO HELP YOU DECIDE WHERE AND WHEN YOU WANT YOUR PHOTOS TO TAKE PLACE. I AM ALWAYS OPEN TO NEW LOCATIONS, BUT HERE ARE SOME OF MY FAVOURITES.



CONTACT JULIE SCHAPPERT  
TO BOOK:  
JULIESCHAPPERT@GMAIL.COM  
306-241-8939  
STONESANDGLASSDESIGNS.COM





STONES + GLASS  
designs

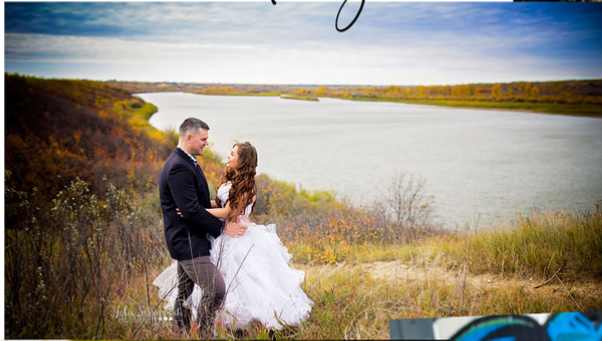
# LANGHAM



- MY HOMETOWN
- WOODEN BUILDINGS
- WIDE OPEN SPACES
- COMBINED WITH RIVER RIDGE GIVES A VERY DIVERSE GALLERY







- INCREDIBLE VIEW OF THE NORTH SASKATCHEWAN RIVER
- BEAUTIFUL ROLLING HILLS
- EVER CHANGING GRAFFITI BACKGROUND







# BOFFINS gardens

- WELL GROOMED
- BEAUTIFUL VINE ARCHES
- POND
- STONE WORK
- CAN BE VERY BUSY (ESPECIALLY ON WEEKENDS)



STONES & GLASS  
designs





- ABOUT 40KM FROM SASKATOON, THESE ICONIC ARCHES MAKE FOR A GREAT BACKDROP FOR YOUR PHOTOS



# BORDEN *bridge*



STONES + GLASS  
*designs*







oh,  
COUNTRY  
road

- WHETHER YOU LIVE ON AN ACREAGE OR NOT, LET'S LET SASKATCHEWAN SHINE WITH A COUNTRY ROAD SESSION!



STONES + GLASS designs







# RIVER Landing

- URBAN  
- RIVER  
- LOTS OF  
INTERESTING SPACES







landin  
STONES + GLASS





# FORESTRY farm

- LOVELY GARDENS
- POND ACCESS
- TRICKY HOURS
- PARK ENTRANCE FEE  
(PREVIOUSLY \$2/VEHICLE)







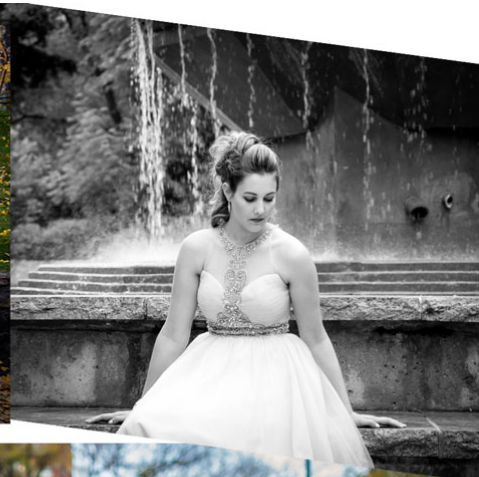
# gabriel DUMONT

RIVER ACCESS.  
ROCK WORK &  
THE ICONIC BRIDGE

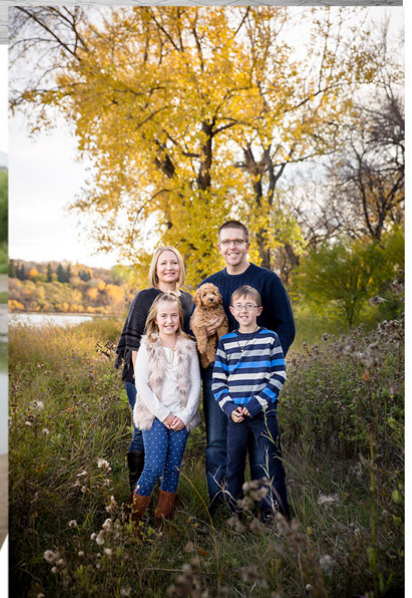


- PET FRIENDLY
- BUSY LOCATION (CAN BE DISTRACTING)
- SUNSET SHOTS ONLY





# SPADINA river walk







STONES + GLASS  
*designs*

- A GREAT DEAL OF GREEN SPACE
- BEAUTIFUL STONE BUILDINGS
- OPEN SHADE NEEDED TO SHOOT AT ANY TIME OF THE DAY
- BEAUTIFUL YEAR ROUND



U OF S

