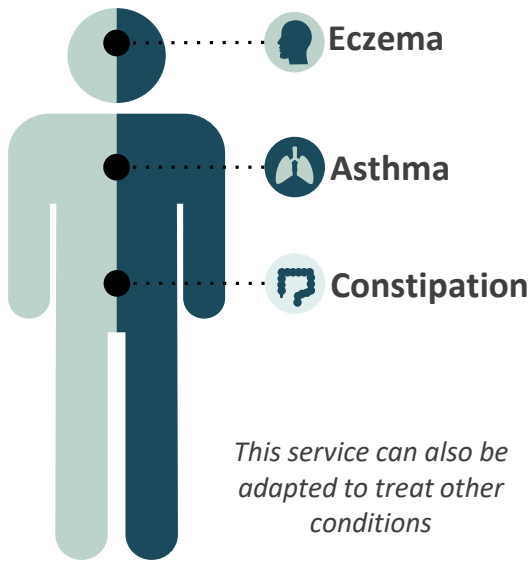


# CHILDS IMPACT: PATIENT OUTCOMES



**93%** of patients with moderate to very severe eczema who completed treatment were discharged from the service with symptoms that were clear or mild (i.e. below threshold)



**90%** of patients who had uncontrolled asthma at their initial assessment were discharged with reasonably or well controlled asthma.

**38%**

**85%** of children treated for constipation have levels above threshold when they enter the service, and after 6-10 weeks only **38%** still have symptoms above threshold.

## Feedback From Patients

Friendly and targeted advice, all relevant, well explained and listened to all my questions, so helpful. Also amazingly quick at getting in touch after first diagnosis. Wonderful service.

Very individual and personal to each child. Fantastic knowledge and advice given.



She listened and gave me loads of advice and set me a basic plan around how my daughter is. She has helped make a change in my daughter's life in 2 weeks and I've been going to doctors with the same problem for the last 3 years.

I was listened to, given good advice and made me feel I could come to them when needed



**20-25%** of children with long-term conditions also have moderate to severe mental health needs. Our system improves mental health scores, moving up the scoring system by 2-3 bands when mental health services were provided – a significant improvement.