

AbbVie Operations Branchburg Facility

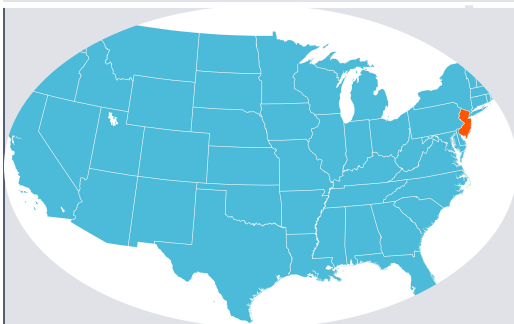


abbvie

Branchburg Site Description

1. Safety Overview and Visitor Instructions
2. AbbVie Global Manufacturing Overview
- 3. Branchburg Site Description**
4. Organizational Structure
5. AbbVie Quality Systems
6. Product Manufactured & Supported
7. Inspection / Audit History
8. Inspection Logistics
9. Q&A

Branchburg Site Layout



- Located in Central New Jersey (large Pharmaceutical population) since 1999
- Manufacturing and Warehousing across 3 sites



Manufacturing Operations & Quality
1 Millennium Way

- 136,000 Ft² total space
 - 95,000 Ft² Office
 - 34,000 Ft² Mfg



Design and Development, Manufacturing and Distribution
4 Millennium Way

- 75,000 total space
- 30,585 Ft² Mfg



Warehouse & Distribution
220 Evans Way

- 44,000 Ft² total space
- 32,070 Ft² Mfg

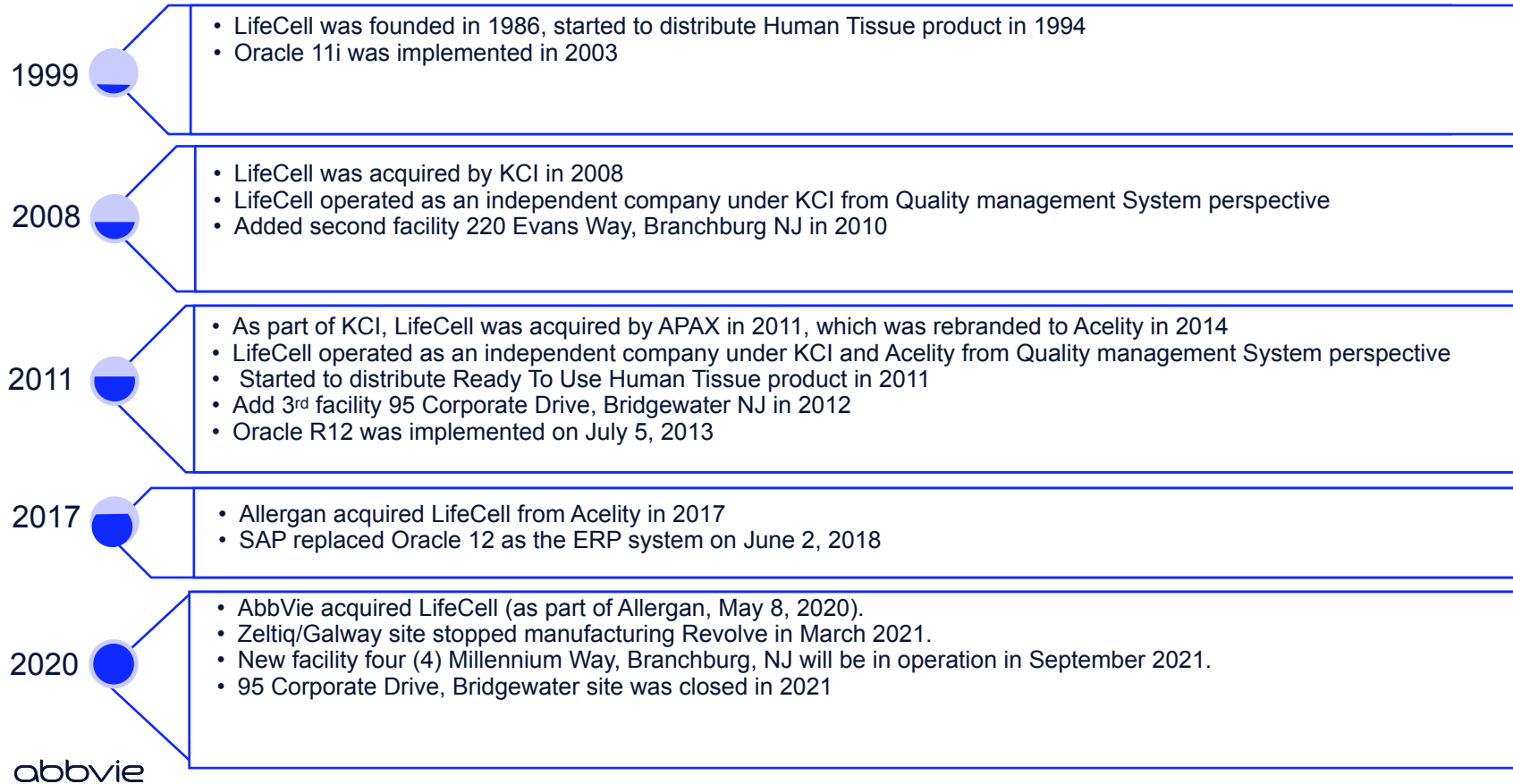


The map shows the three sites marked with orange stars. The sites are located along Old York Road, which is labeled. A road sign for 202 is also visible. The sites are labeled with their addresses: 1 Millennium Way, 4 Millennium Way, and 220 Evans Way.



~559 Total - Mfg 25, Quality 167, Operations 118
Device related: Mfg 37, Quality 101, Pharma Tech 15

Branchburg Site History



Applicable facility/QMS regulatory registrations/licenses that are maintained

Both Medical Device and Human Tissue standards drive the regulations for our processes



Branchburg is an accredited tissue bank with 30+ certified tissue bank specialists (#00095/7)



Regular inspections by multiple regulatory bodies and customers



MDSAP Certification since 2018



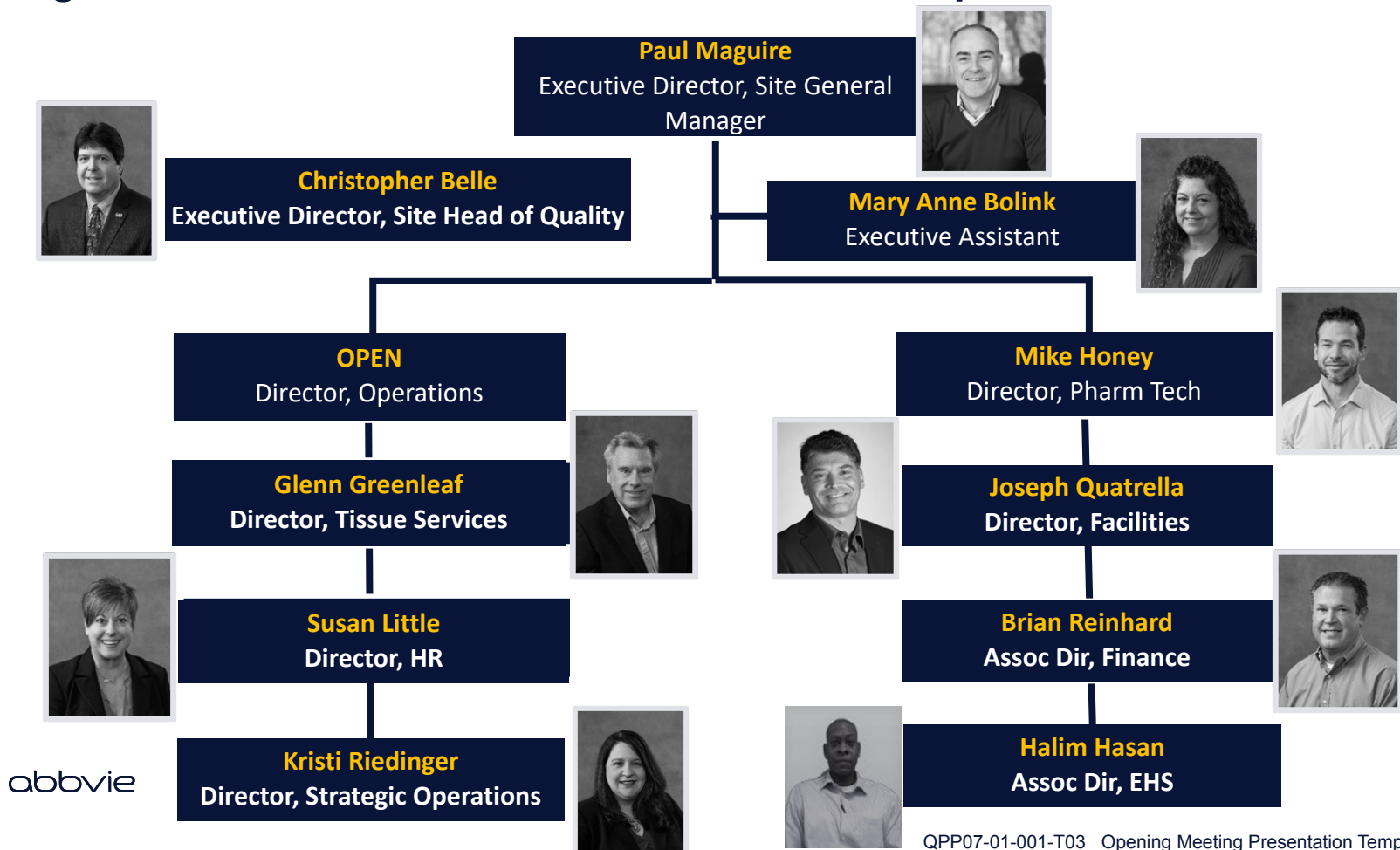
Australian Government
Department of Health
Therapeutic Goods Administration



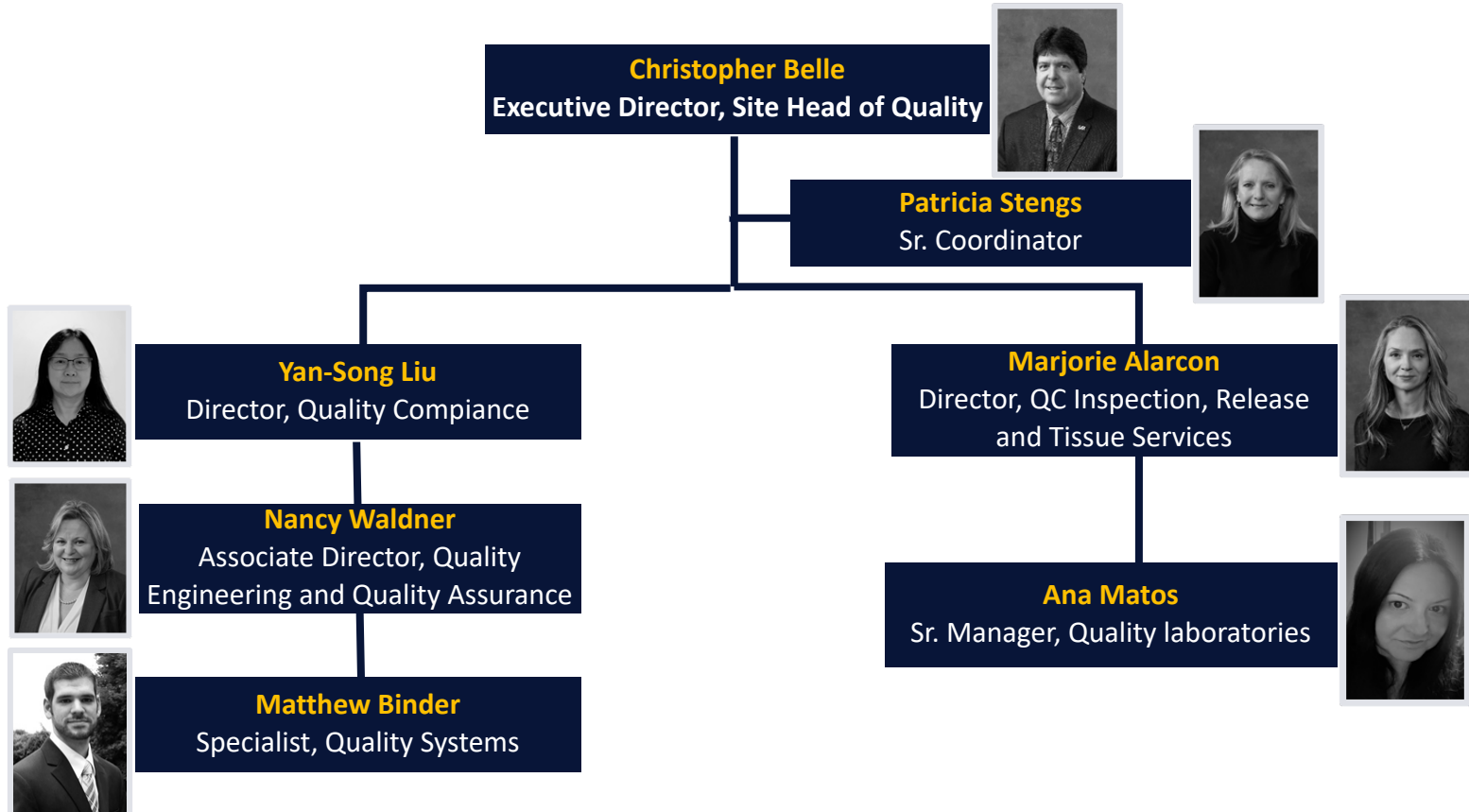
Organizational Structure

- 
1. Safety Overview and Visitor Instructions
 2. AbbVie Global Manufacturing Overview
 3. Branchburg Site Description
 - 4. Organizational Structure**
 5. AbbVie Quality Systems
 6. Product Manufactured & Supported
 7. Inspection / Audit History
 8. Inspection Logistics
 9. Q&A

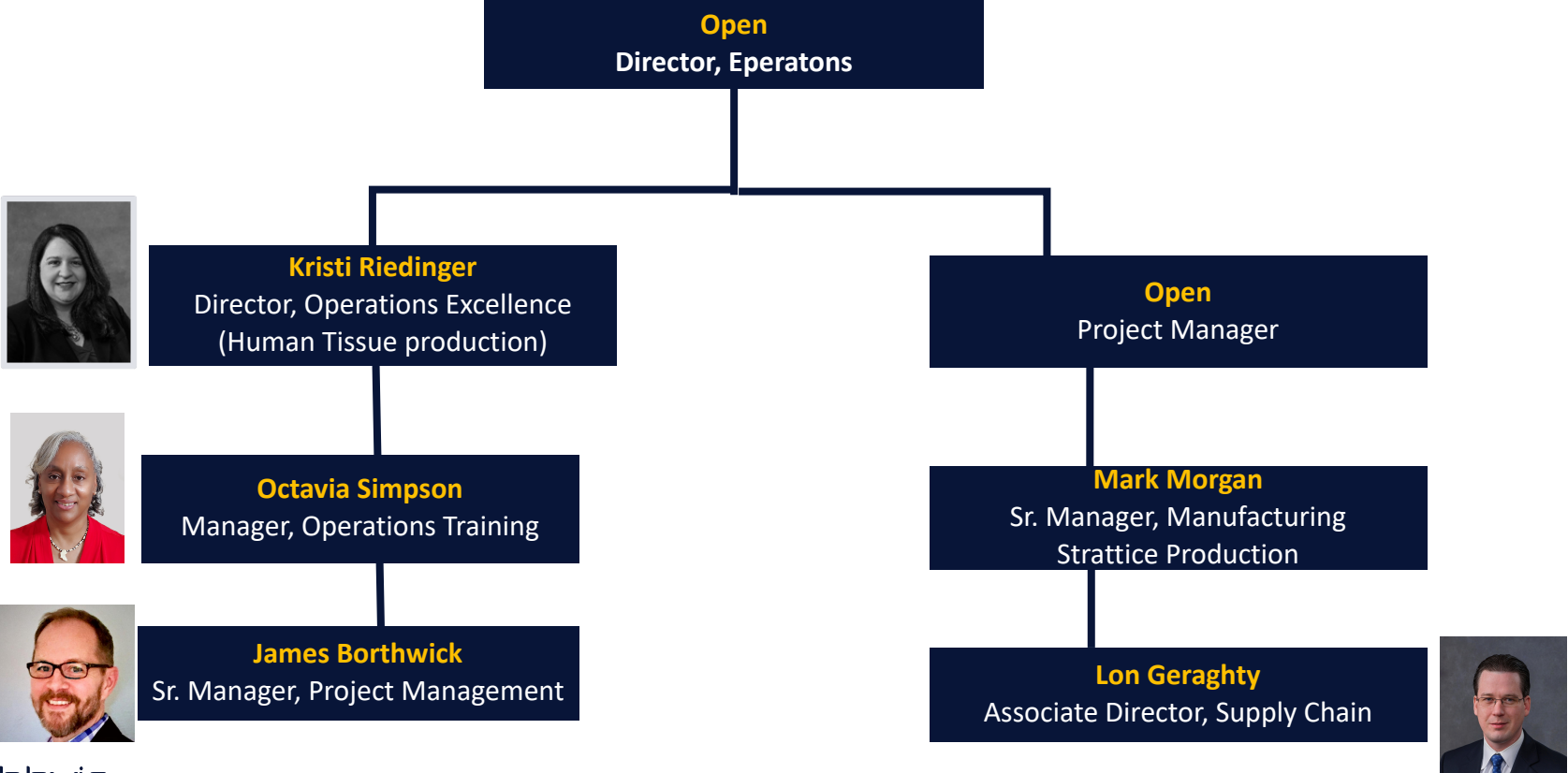
Organizational Structure – Site Senior Leadership



Site Quality Structure



Site Manufacturing Operations Structure



Product manufactured & Supported

A close-up photograph of a person wearing a white lab coat, a white hairnet, and a white face mask. They are also wearing safety glasses. They are holding a test tube with a red liquid inside, which is in sharp focus in the foreground. The background is blurred.

1. Safety Overview and Visitor Instructions
2. AbbVie Global Manufacturing Overview
3. Branchburg Site Description
4. Organizational Structure
5. AbbVie Quality Systems
- 6. Product Manufactured & Supported**
7. Inspection / Audit History
8. Inspection Logistics
9. Q & A

Product manufactured & supported

HUMAN TISSUE PRODUCTS

AlloDerm®
REGENERATIVE TISSUE MATRIX

Freeze-dried;
Non-sterile

AlloDerm®
REGENERATIVE TISSUE MATRIX

Ready To Use;
Sterile

AlloDerm®
REGENERATIVE TISSUE MATRIX

Contours

AlloDerm®
REGENERATIVE TISSUE MATRIX

Perforated

AlloDerm®
REGENERATIVE TISSUE MATRIX

Perforated XL

**AlloDerm SELECT
RESTORE™**

LifeCell™

1986

1994

2008

2011

2013

2014

2016

2017

2018

2019

2020*

PORCINE TISSUE PRODUCTS

Strattice™
RECONSTRUCTIVE TISSUE MATRIX

Ready To Use;
Sterile

Strattice™
RECONSTRUCTIVE TISSUE MATRIX

XL Sizes

Laparoscopic

Strattice™
RECONSTRUCTIVE TISSUE MATRIX

Perforated

Strattice™
RECONSTRUCTIVE TISSUE MATRIX

Extra Thick

NovoMatrix™
RECONSTRUCTIVE TISSUE MATRIX

ARTIA™
Pre-Pectoral
Shapes (EU)

MEDICAL DEVICES

NON TISSUE PRODUCTS



REVOLVE™
Advanced Adipose System



REVOLVE ENVI™
Advanced Adipose System
600

abbvie

Product Applications

Dental
Face
ENT



Soft Tissue Reinforcement
& Repair



Autologous Fat
Transfer

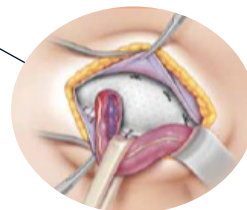
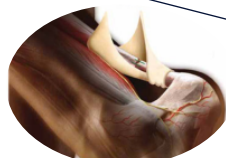


Ventral Hernia

Wounds



Foot
Ankle
Achilles



Inguinal Hernia

abbvie

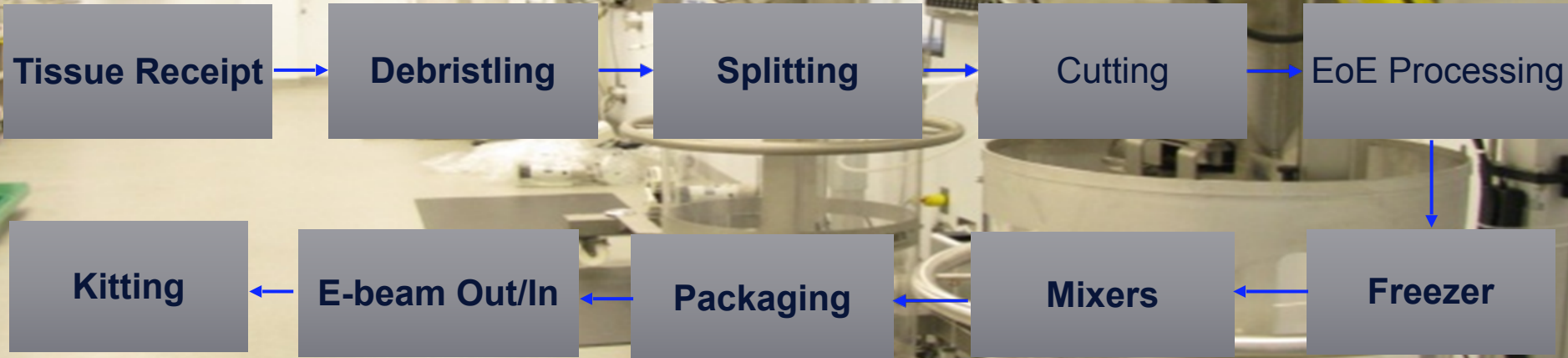
AlloDerm®
REGENERATIVE TISSUE MATRIX

Strattice™

REVOLVE™
Advanced Adipose System

12

Manufacturing Operations - Strattice® process



Manufacturing Operations - AlloDerm® process

