

Development Potential US-431



Exquisite Land Development Site

Williamson County, Tennessee

The rolling hills of this beautiful land is located in one of the most desirable areas of the United States, in Williamson County, TN. The property is only 11 miles from downtown Franklin, and an approximate 30 - 35 minute commute to downtown Nashville and the Nashville International airport.

Williamson County Schools

Williamson County Schools continue to be a leader in the State of Tennessee in academic achievement according to the 2018 State Report Card. The location of this property is only 3 miles from the Bethesda Elementary, Thompson's Station Middle School, and Summit High School.

Prime Interstate Access

Scheduled for completion in the Spring of 2023, this property will be a mere 1.25 miles from Interstate 65. Current access to I-840 and I-65 is 3.0 and 3.5 miles, respectively.

Property

520 +/- acres of gently rolling hills with ample open green space, beautiful trees, wooded areas, and four small lakes.

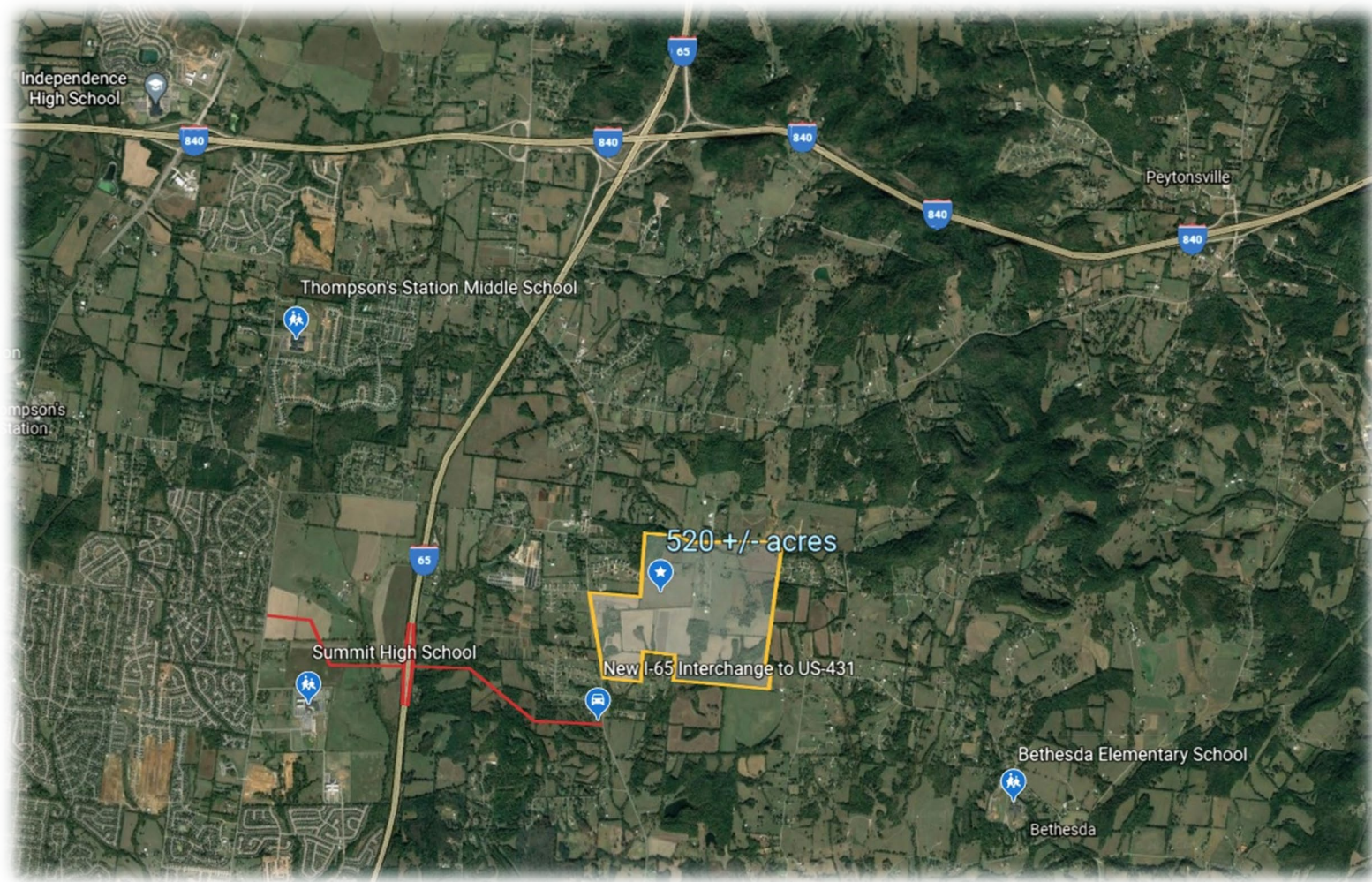
Opportunity

The property is a prime development location in a rapidly growing and prosperous area in southern Williamson County. Rural, yet only a short drive into the city of Nashville.

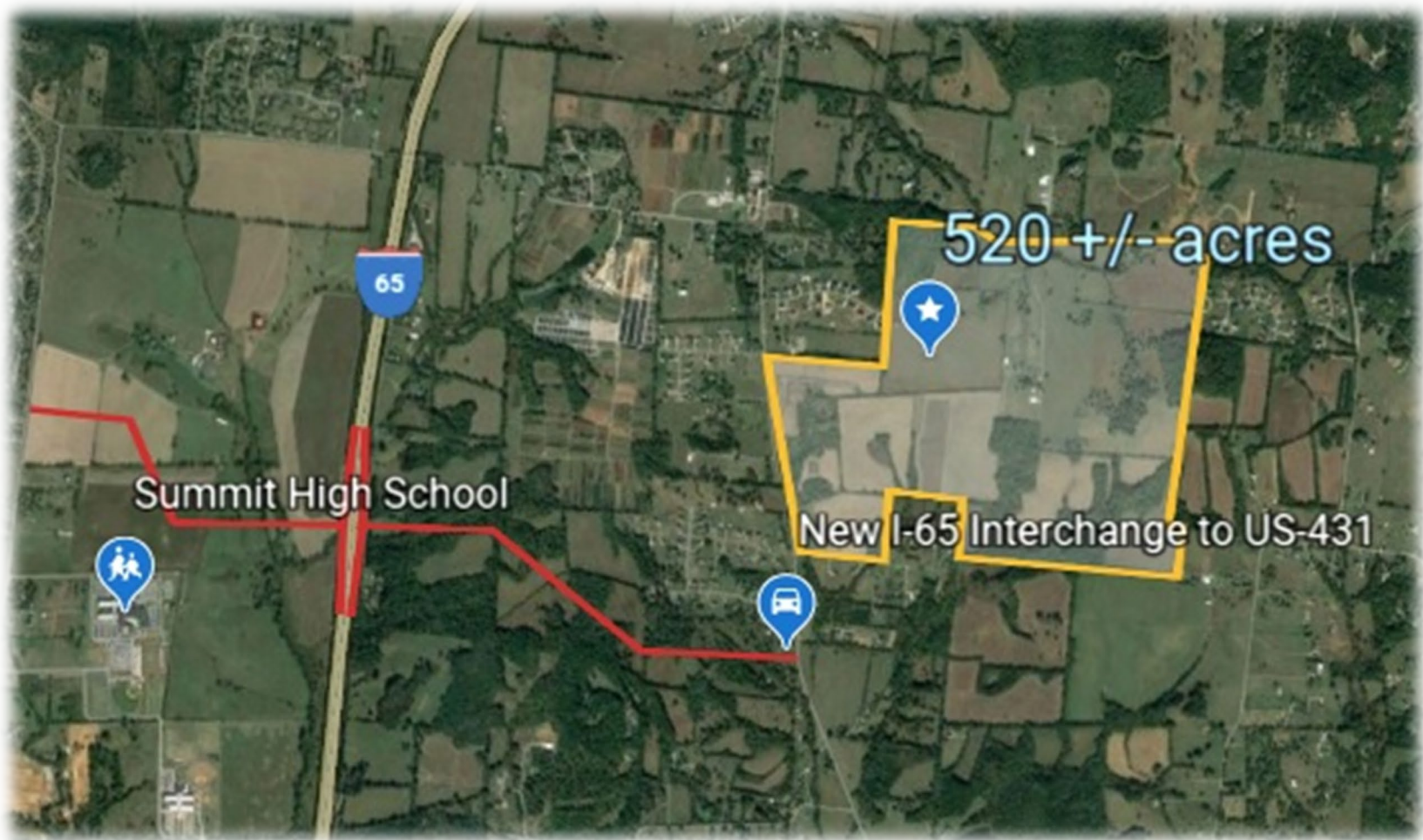
Multiple Road Frontage Access Points

Property has multiple access points with ~ 2,800 feet of frontage on US Highway 431, another ~ 3,250 feet of frontage on Bethesda Road, and ~ 330 feet on Wilhoite Road.

Development Potential US-431



Development Potential US-431



Development Potential US-431



Development Potential US-431



Development Potential US-431



Development Potential US-431



Development Potential US-431



Development Potential US-431

For additional information, please visit www.US431Property.com.



www.US431Property.com