



C.E.C. Meeting

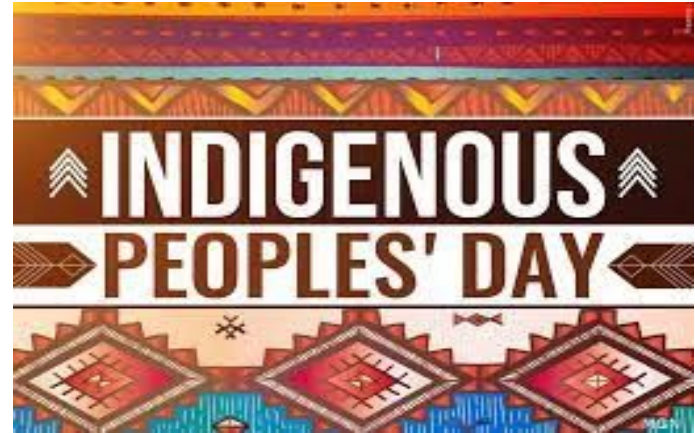
September 30, 2025

Rafael T. Alvarez , Superintendent
Nicole Lanzillotto, Deputy Superintendent

Celebrating and Honoring in September

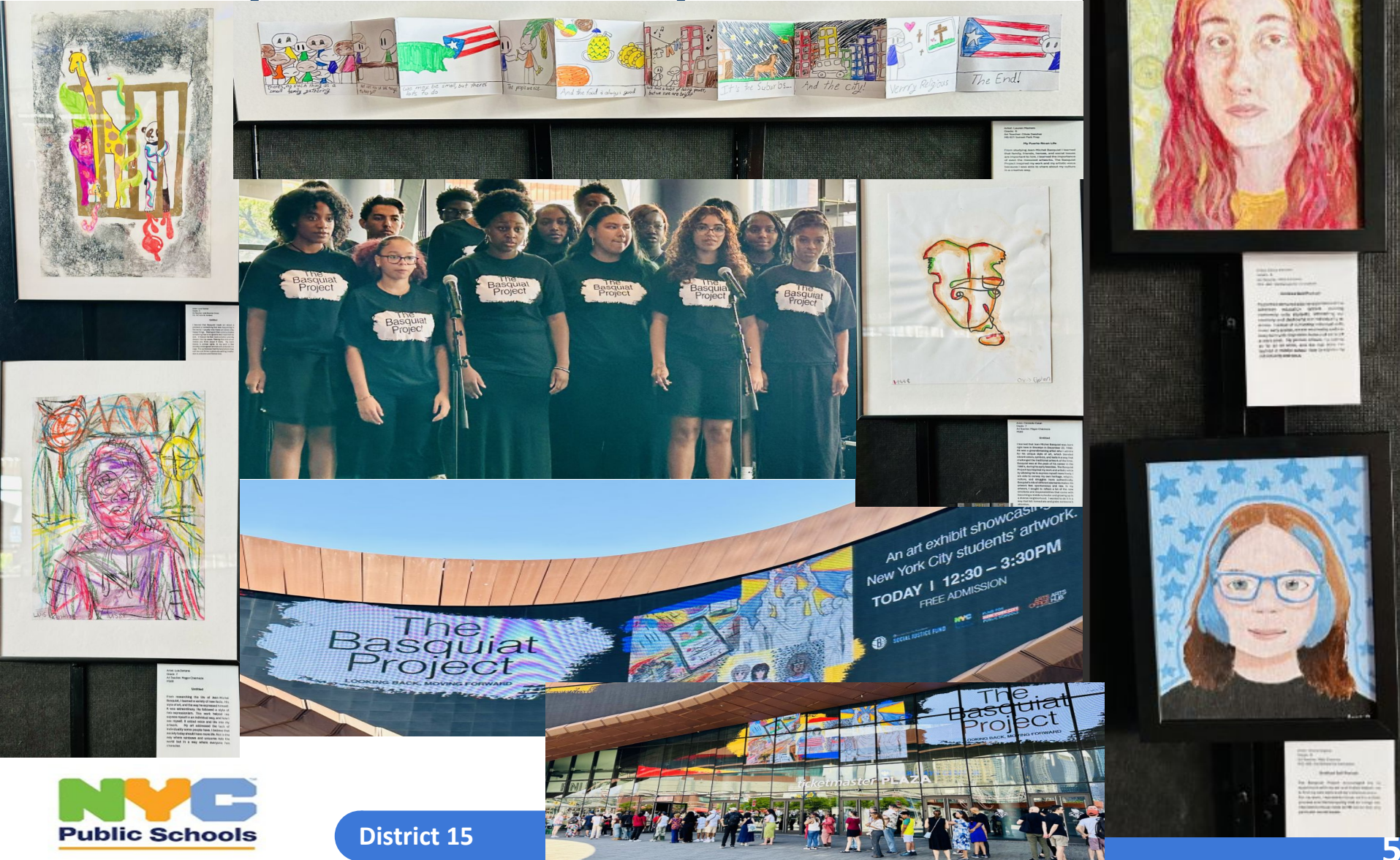


Celebrating and Honoring in October



The collage features 18 distinct photographs. Top row: a man in a suit and a woman in a classroom; a young man in a green 'D NAVY' shirt; a group of women and children; a large group of children in a courtyard. Second row: two girls holding a book; a girl in a blue shirt; a group of children in a classroom; a group of women and children. Third row: a group of men in orange shirts; a girl in a rainbow shirt; a group of children in a classroom. Bottom row: a man and woman in a classroom; a man in a suit and a woman in a police uniform; a man and woman in a classroom; a group of children in a classroom.

D15 Students Shine at Basquiat Exhibit at the Barclays Center in July



Agenda

- District Team
- Priorities & Goals
- Assessment Snapshot
- District Literacy Focus
- MLL Snapshot
- Upcoming Events & Workshops
- Q & A

District 15

Team



District 15 Team 2025-2026		
District Member	Role	Email
Leadership Team		
Alvarez, Rafael T.	Superintendent	RALvare4@schools.nyc.gov
Lanzillotto, Nicole	Deputy Superintendent	NLanzillotto@schools.nyc.gov
Coming Soon	Deputy Superintendent	TBD
Kanowitz, Eva	Administrative Assistant	EKanowitz@schools.nyc.gov
Cheryl Stephens	Business Manager	CStephens@schools.nyc.gov
Family Support		
Ortiz, Michelle	Family Leadership Coordinator	MOrtiz57@schools.nyc.gov
Diaz, Brenda	Family Support Coordinator	BDiaz14@schools.nyc.gov
Special Education Support		
Nadeau, Jeanette	Administrator of Special Education (ASE)	JNadeau2@schools.nyc.gov
MLL Support		
Interlandi, Maria	Director for Multilingual Learners	MInterl@schools.nyc.gov
Lee, Michael	Senior ELL Compliance & Performance Specialist	MLee22@schools.nyc.gov
Giles, Cera-Jann (C-J)	MLL Instructional Coach	CGiles5@schools.nyc.gov
Student Services		
Dawson, Donna	Student Services Manager	DDawson3@schools.nyc.gov
Miller, Zachary	Student Services Manager	ZMiller@schools.nyc.gov
District Support Team		
Koffer, Ursula	Teacher Development & Evaluation Coach (TDEC)	UKoffer@schools.nyc.gov
McLaughlin, John	Director of School Improvement	JMcLaughlin5@schools.nyc.gov
Olesh, David	Office of Policy & Evaluation Lead (OPEL)	DOlesh2@schools.nyc.gov
Singh, Neal L.	Director of Student Services & Special Initiatives	NSingh10@schools.nyc.gov
Stein, Paula	District Manager of Operations & Special Projects	PStein3@schools.nyc.gov
Instructional Support Team		
Audiffred, Karina	District Achievement & Instructional Specialist (ELA K-5)	KAudiff@schools.nyc.gov
Panag, Sara	Literacy/Data Specialist	SPanag2@schools.nyc.gov
Oerlemans, Sompon (Sammi)	District Achievement & Instructional Specialist (ELA, 6-12)	SOerlem@schools.nyc.gov
Mahase, Valerie	Academic Intervention Services Coordinator	VMahase@schools.nyc.gov
Jackson, Phyllis	Academic Intervention Services Coordinator	PJackson@schools.nyc.gov
Bernstein, Lynsay	Reading Implementation Specialist (K-5)	LBernstein10@schools.nyc.gov

Bailey, Monique	Intensive Reading Interventionist	MBailey5@schools.nyc.gov
Purvis, Sakena	Intensive Reading Interventionist	SPurvis@schools.nyc.gov
Connor, Chandra	District Achievement & Instructional Specialist (Special Education)	CConnor3@schools.nyc.gov
Rached, Leila	District Achievement & Instructional Specialist (Math, K-5)	LRached@schools.nyc.gov
Startup-DeNat, Jessie	District Achievement & Instructional Specialist (Math 6-12)	JDenat@schools.nyc.gov
McDonough, Alisha	Math Implementation Specialist (6-12)	Amcdonough4@schools.nyc.gov

District Priorities

District Priorities

- Focus on **marginalized student groups**
- **MTSS / Progress Monitoring**
- **Curriculum** Implementation- W&W, HMH, IM / Algebra 1
 - K-5 and 6-12 Literacy and Math Shifts
- PreK-2 **Foundational Literacy** Practices
- **Project Based Learning**
- Strengthening use and impact of [ICT Models](#)
- **Professional Development & Intervisitations**
- **Executive Leadership** and **Job Embedded Coaching**
- Addressing **Chronic Absenteeism**

DCEP Goals - Overview

ELA: Focused on increasing the % of ELLs, SWDs and Hispanic students on or above grade level, as well as reducing % of students in the bottom 16th%.

Supportive Environment: A decrease in the # of suspensions and EMS transports as well as a reduction in material incident violations.

Math: A reduction in SWD's and MLL's in the bottom 16th %

Career & College Readiness: IPR completion and student access to Financial Literacy Curriculum.

Parent Engagement: Parent attendance, language access/translations.

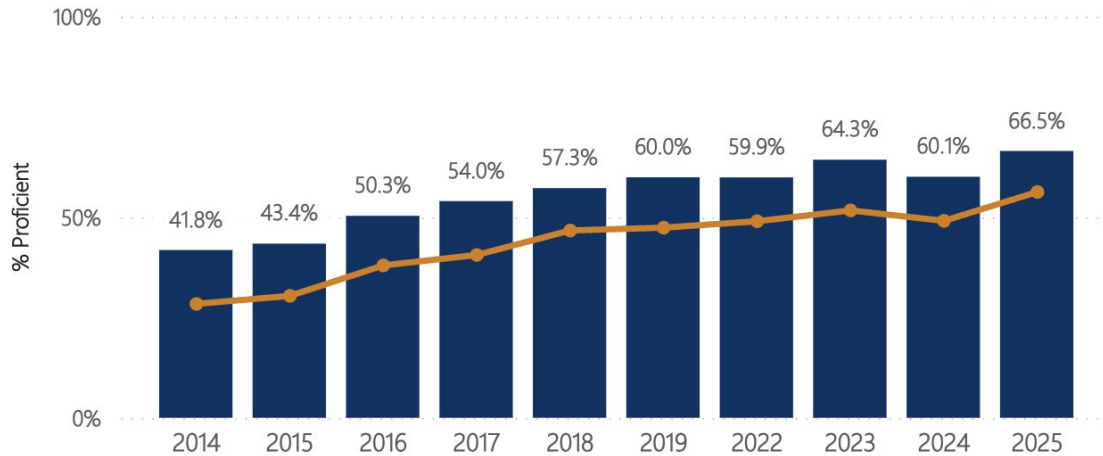
Chronic Absenteeism: Reduce Chronic Absenteeism for students in temporary housing, economically disadvantaged Black students and economically disadvantaged Hispanic/Latinx students.

2025 State Assessment Snapshot

Growth & Areas of Focus

ELA % Proficient (Level 3&4)

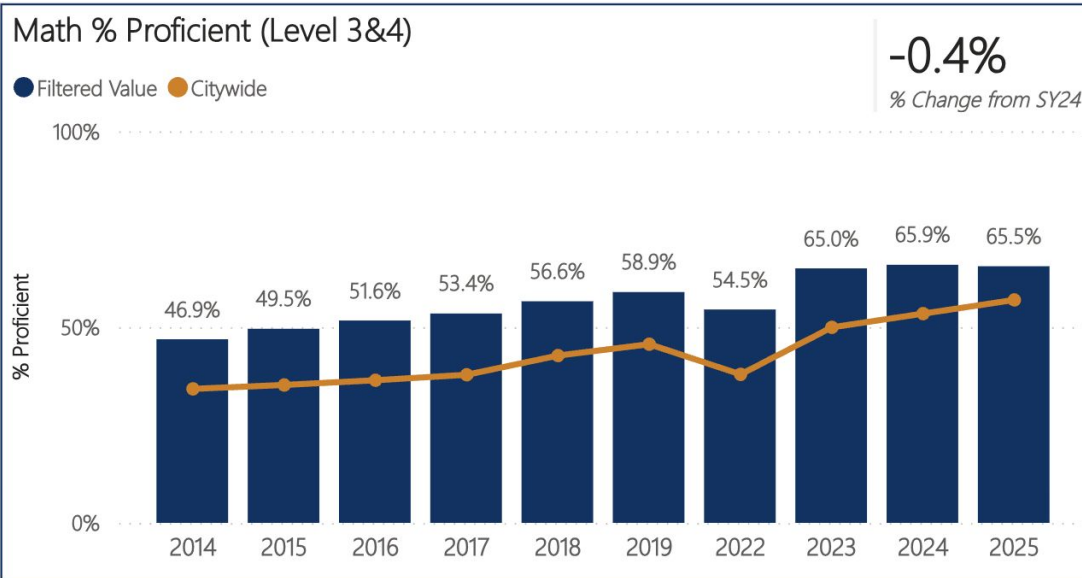
● Filtered Value ● Citywide



- 3rd grade highest proficiency - 71.1%
- 3rd - 5th higher proficiency than 6th - 8th
- All accountability subgroups at recent highs in proficiency, except for Black students

	2022		2023		2024		2025	
	#	%	#	%	#	%	#	%
Opt-Out Rates								
All Students	5,120	20.4%	2,205	18.3%	1,468	12.9%	1,374	11.6%
English Language Learners	688	17.8%	332	18.2%			241	13.8%
Students w/ IEPs	2,160	33.8%	906	29.2%	622	23.0%	702	21.9%

Growth & Areas of Focus



Opt-Out Rates	2022		2023		2024		2025	
	#	%	#	%	#	%	#	%
All Students	4,774	19.2%	1,826	15.1%	1,252	10.9%	1,176	10.0%
English Language Learners	784	20.4%	314	17.0%			193	11.0%
Students w/ IEPs	2,046	32.5%	804	25.8%	576	21.0%	634	19.8%

- 3rd grade highest proficiency - 72.7%
- 3rd - 5th higher proficiency than 6th - 8th
- All accountability subgroups near recent highs in proficiency, except for Black students

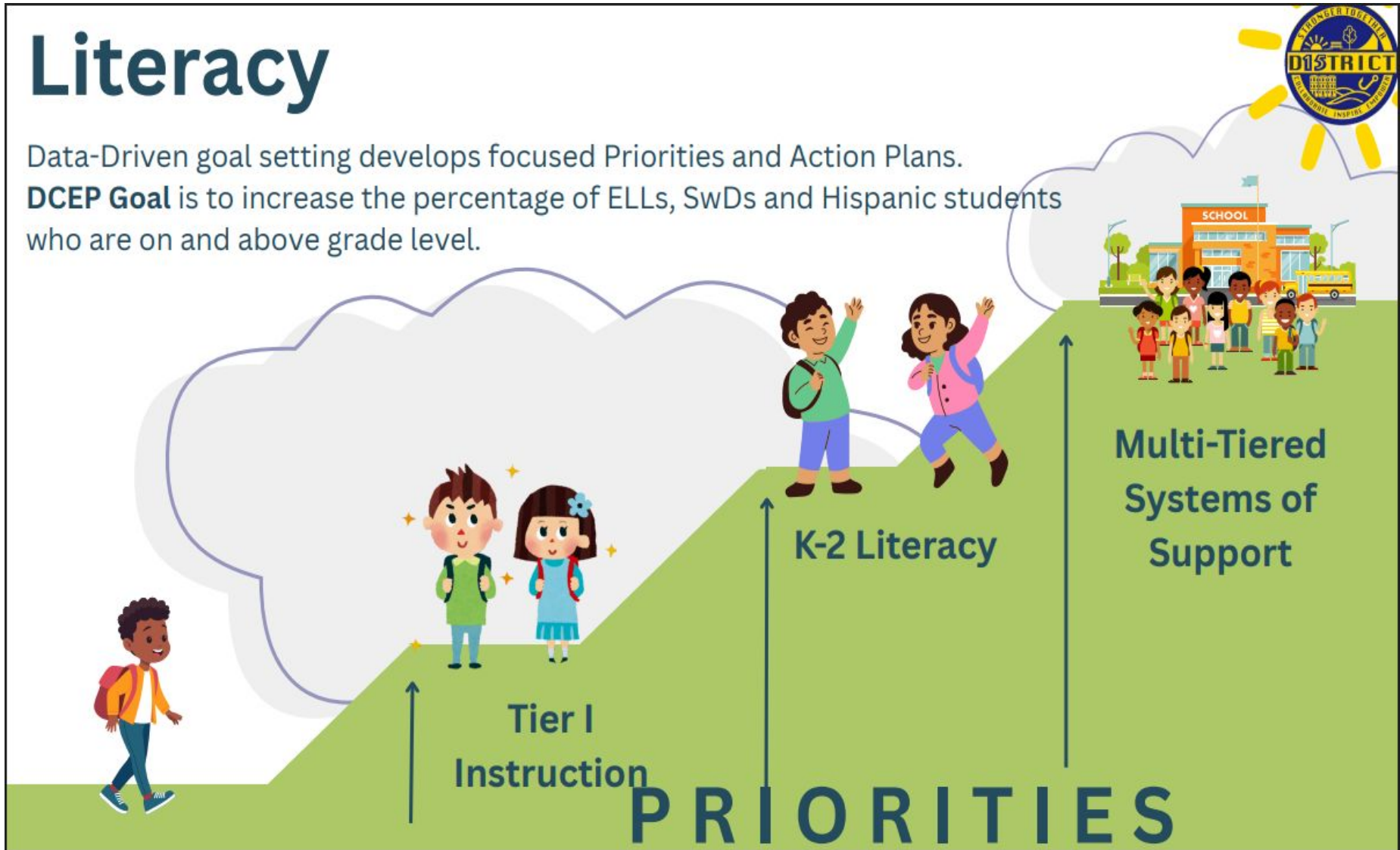
District Literacy Support

DCEP Goals - Priority 1 ELA Overview

Literacy

Data-Driven goal setting develops focused Priorities and Action Plans.

DCEP Goal is to increase the percentage of ELLs, SwDs and Hispanic students who are on and above grade level.



DCEP Goals - Priority 1 ELA Overview

Priority Need	Goal	Action Steps
Tier 1 instruction	Increase% of ELLs, SWDs and Hispanic students on or above grade level	<ul style="list-style-type: none">• PL series for teachers as well as school leaders• Job-embedded coaching support• Literacy walkthroughs
Tier 2 & 3 instruction	Decrease the % of students in the bottom 16th%	<ul style="list-style-type: none">• Provide 6 cohorts of Edwards OG training• District will lead tiered PD in foundational knowledge/structured literacy

Literacy

District 15 Literacy Goals for 2025–26

We're working to help all students grow as strong readers and writers. This year, we're focusing on three main areas:

1. **Stronger Daily Lessons**

We're making everyday reading and writing lessons even better for all students by provide specific supports to meet all needs.

2. **Support for Early Readers**

Teachers in grades K–2 are getting more tools to help young children build strong reading skills.

3. **Help When Students Need It**

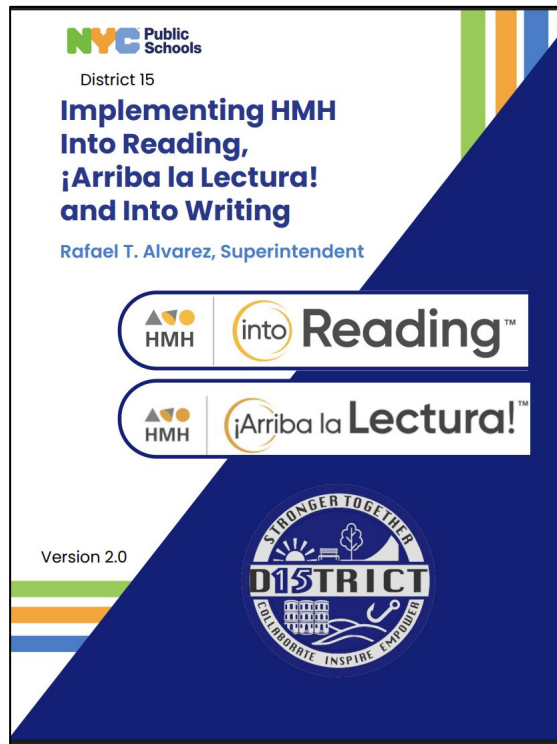
Schools will have clear systems to check in on student progress and provide extra support when needed.

4. **At Home Resources**

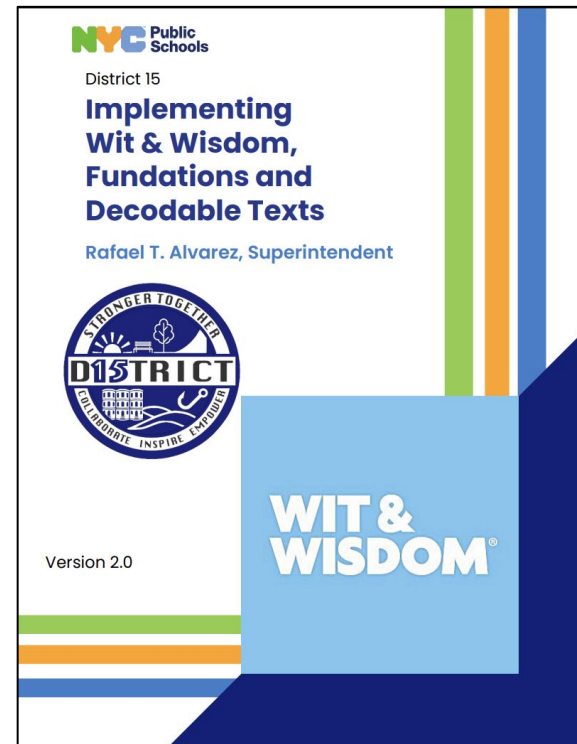
We will soon be releasing an instructional guidebook full of helpful and practical resources to support children around phonics and reading.

Curriculum Adoption - Year 2.5

Wit and Wisdom & HMH



[D15 HMH Implementation Guide, 25-26.pdf](#)



[D15 WW Implementation Guide, 25-26 \(3\).pdf](#)

D15 Strategic Literacy Plan (Being Updated)

- **Shared vision** for high-quality, equitable literacy instruction
- Ensures all students receive **consistent, research-based instruction** that builds strong readers and writers
- **Aligns** curriculum, assessment, and professional learning **across the district**

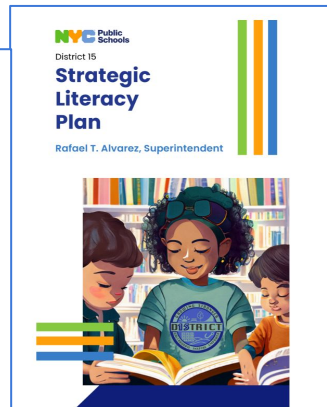


Table of Contents

Literacy in District 15	4
Grounding Principles for Reading	7
Grounding Principles for Writing	11
Biliteracy in D15	17
Literacy Shifts	20
Supporting Diverse Learners	25
Core Curricula	28
Foundational Literacy	31
Literacy Logistics	36
Assessments	39
Meeting Diverse Needs	42
Shared Commitments	49
Professional Learning	51
School & Family Communication	55
Appendices	57



Supporting Home Languages in Classrooms and for Families Across D15

Top 10 Languages Spoken by ELLs in District 15

Spanish	1,755
Chinese	609
Bengali	142
Arabic	95
Russian	47
French	27
Urdu	17
Japanese	13
Portuguese	10
Hebrew	6

ELLs Receiving ENL (EOY 2025)

D15	98.4%	Citywide	91.3%
ELLs in Bilingual Programs			
D15	40.5%	Citywide	17.9%

277 Bilingual Certified Teachers (EOY 2025))

32 Bilingual Programs	14 Schools	3 Languages (SP, CH, FR)
-----------------------	------------	--------------------------

Translation and Interpretation Funds (MAY 2025)

D15	55.2%	Citywide	69.4%
-----	-------	----------	-------

Upcoming Events / Dates

Fall 2026 Middle School Admissions Timeline

- **Wednesday, October 15, 2025:** Middle School Application Opens
- **Monday, November 3, 2025:** Deadline to register to test for Mark Twain I.S. 239 (21K239) and District 21 Talent Tests
- **Friday, December 12, 2025:** Middle School Application Closes
- **Wednesday, April 15, 2026:** Middle School Offer Release

HS Admissions Timeline

Here is a timeline to help you keep track of all important due dates for the upcoming High School Admissions process:

- **Tuesday, October 7:** High School Application, LaGuardia Application and Specialized High Schools Admissions opens.
- **Friday, October 31** – SHSAT registration closes.
- **Wednesday, November 12** – SHSAT School Day.
- **Sat/Sun, November 15-16:** SHSAT Weekend Administration (8th grader students not participating in the school day testing)
- **Sat/Sun, November 22-23:** SHSAT Weekend Administration (9th grade students)
- **Wednesday, December 3** – High School and LaGuardia application close. Deadline to submit additional materials (auditions and assessments) in MySchools.

Mark Your Calendars!!!

District Initiatives & Events: 2025-2026

- **January 15:** Day of Service
- **February 12:** D15 Arts Showcase
- **March 11:** PBL
- **April 24 & 25:** D15 Musical
- **May 16:** S.T.E.M. Exploration Day
- **June 11:** D15 Recognition Ceremony

*TBD - District Carnival

DISTRICT 15
DAY OF SERVICE
IN COLLABORATION WITH CITY HARVEST
THURSDAY JANUARY 15, 2026
150 52ND STREET, BROOKLYN NY 11232
ELEMENTARY SCHOOLS: 10:00 AM - 12:30 PM
MIDDLE AND HIGH SCHOOLS: 2:00 PM - 4:30 PM

Volunteer

Our volunteers are critical to our work year-round.

STUDENTS 10 YEARS OR OLDER MAY PARTICIPATE WITH A SIGNED YOUTH WAIVER. PLEASE CONTACT NEAL L. SINGH, DIRECTOR OF STUDENT SERVICES AND SPECIAL INITIATIVES AT nsingh@schools.nyc.gov WITH QUESTIONS.

Neal L. Singh
Director of Student Services & Special Initiatives

Rafael T. Alvarez ●●● Nicole Lanzillo ●●●

DISTRICT 15
ARTS SHOWCASE
VISUAL AND FINE ARTS - DANCE - DRAMA -
INSTRUMENTAL - MUSICAL THEATRE - VOCAL

THURSDAY FEBRUARY 12, 2026
ELEMENTARY SCHOOLS: 4:00 PM - 5:30 PM
MIDDLE AND HIGH SCHOOLS: 6:00 PM - 7:00 PM

Hosted by: 345 Dean Street, Brooklyn, NY 11217
Brooklyn High School of the Arts

Neal L. Singh
Director of Student Services & Special Initiatives

Rafael T. Alvarez ●●● Nicole Lanzillo ●●●

Project Based Learning
District 15 Community Event

PBL WORK SHARE
2025-26

With support from the Learning Technology Grant, we're using technology to make PBL connected, authentic, and meaningful for D15 students.

SAVE THE DATE
MARCH 11, 2026
LOCATION & TIME TBD

DISTRICT 15
STEM
EXPLORATION DAY

Saturday May 16, 2026
10:00 AM- 2:00 PM
New York Harbor School
Governors Island

A selective science engagement event for students in grades 4-12 from D15 public schools.

Hands-on activities with passionate real-world scientists

NYC STEM Institution Fair

Recreational family activities on Governors Island

SCAN ME!

Use the QR code to apply

Application deadline: Details to follow

Decisions released: Details to follow

Neal L. Singh
Director of Student Services & Special Initiatives

Rafael T. Alvarez ●●● Nicole Lanzillo ●●●

District 15
Recognition Ceremony
Thursday June 11, 2026
4:00 PM to 6:00 PM
MS 88, 544 7th Avenue
Brooklyn, NY 11215

We are Honoring
District and City-wide People Making the Greatest Impact in Fostering Family Partnership and Community in Schools

Hosted by
Principal Allene Altman Mitchell

Neal L. Singh
Director of Student Services & Special Initiatives

Rafael T. Alvarez ●●● Nicole Lanzillo ●●●

Family Engagement



Virtual Family Workshop



K-5 Math & Reading Family Overview

- Overview of the major work of each grade
- Ideas to support students at home

Presented by the D15 Math and ELA Instructional Teams



Tuesday, October. 14, 2025



6:00pm - 07:00pm



Scan QR Code or Click the Link



Meeting ID:
726 885 3826
Passcode:
251368

Spanish Interpretation
Dial in by phone:
+1 347-966-4114,,264649774#

Mandarin Interpretation
Dial in by phone:
+1 347-966-4114,,767687036#

Bangla Interpretation
Dial in by phone:
+1 347-966-4114,,323045599#

[https://zoom.us/j/7268853826?
pwd=N0hhMDZCSzZ2NUtvNEJLSGpoYUNoZz
09&omn=93590732819](https://zoom.us/j/7268853826?pwd=N0hhMDZCSzZ2NUtvNEJLSGpoYUNoZz09&omn=93590732819)

Translated Flyers

Fall 2026 Admissions Timeline

High School Applications Open- 10/7

Middle School Applications Open-
10/15

PTA Compliance

Expedited elections must be
concluded by Oct. 15

District 15 Family Workshops

6:00pm - Virtual

- **Scope and Sequence of Math and Reading - 10/14/2025**
 - Presented by D15 ELA and Math Instructional Team
- **Reading Part 2 - 11/17/2025**
 - Presented by D15 ELA Instructional Team
- **Math Part 2 - 01/13/2025**
 - Presented by D15 Math Instructional Team
- **Social Emotional Learning - 2/10/2026**
 - Presented by D15 Principal / Social Worker
- **Conflict Resolution - 4/14/2026**
 - Presented by Donna Dawson & Zachary Miller - Student Services Managers
- **Mental Health - 5/12/2026**
 - Presented by a Social Worker

Please reach out to bdiaz14@schools.nyc.gov or mortiz57@schools.nyc.gov for more information.

