



C.E.C. Meeting

August 19, 2025

Rafael T. Alvarez , Superintendent
Nicole Lanzillotto, Deputy Superintendent

Agenda

- Curriculum Implementation & Professional Learning
- Project Open Arms
- School leadership and Programming
- Q & A

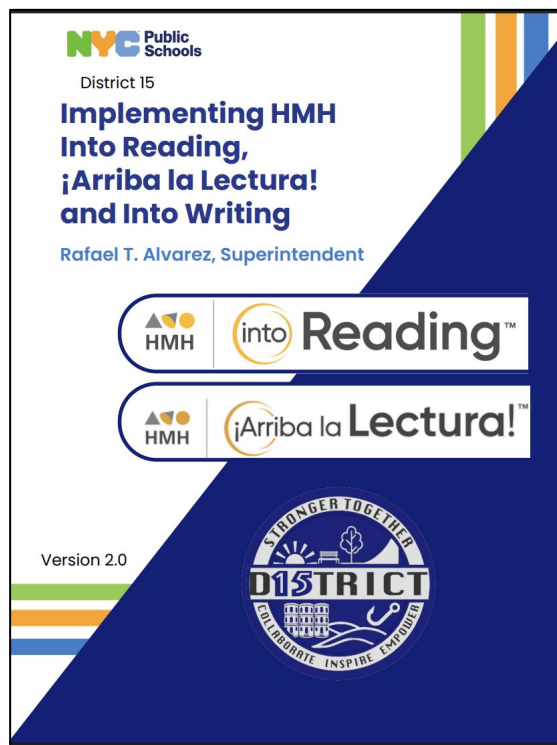
Curriculum Adoption & Professional Learning



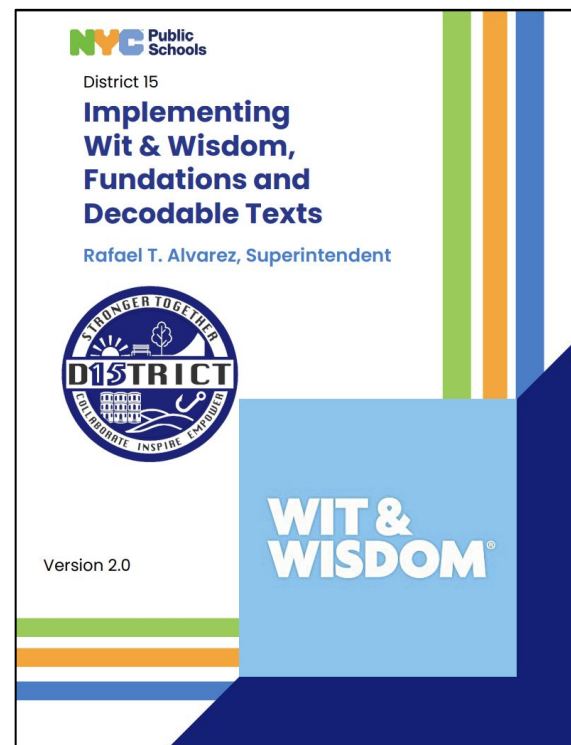
District 15

Curriculum Adoption - Year 2.5

Wit and Wisdom & HMH

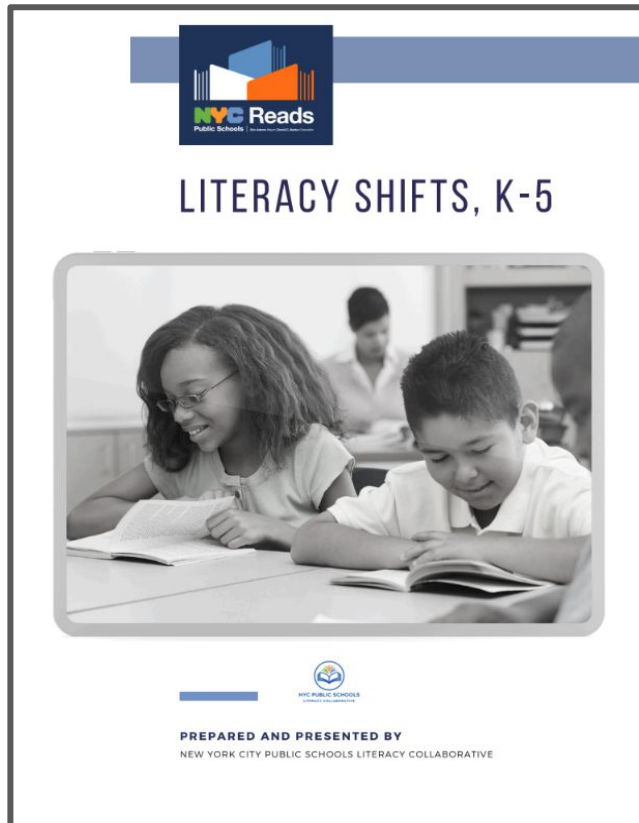


[D15 HMH Implementation Guide, 25-26.pdf](#)



[D15 WW Implementation Guide, 25-26 \(3\).pdf](#)

Our Focus for Literacy Instruction, K - 5



Shift 1- Systematic, explicit phonics instruction

Shift 2- Use of decodable texts (K-2)

Shift 3- Small group, differentiated instruction based on need

Shift 4- Explicit instruction and practice in fluency

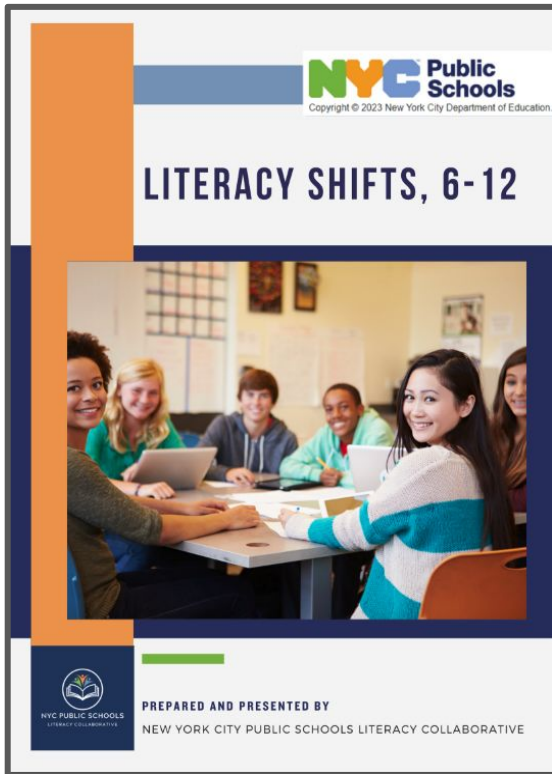
Shift 5- Assessing reading with universal screening, secondary diagnostics, & additional formative assessments

Shift 6- Adoption of research-based, high-quality curricula

Shift 7- Direct, explicit instruction in service of comprehension

Shift 8- Explicit, systematic and cumulative writing instruction, integrated with reading

Our Focus for Literacy Instruction, 6 -12



Shift 1- Content rich, high-quality instructional materials in all content areas

Shift 2- Comprehensive assessment plans

Shift 3- Explicit and differentiated instruction in all content areas

Shift 4- Explicit instruction in discipline specific reading and writing practices

Shift 5- Explicit and differentiated instruction in writing skills and strategies

Shift 6- Frequent opportunities to read and engage with meaningful high-quality complex text

Shift 7- Direct, explicit instruction in service of comprehension

Two ELA Curricular Options, K-5



HMH's Into Reading/ Arriba la Lectura



PS 001, The Bergen
PS 015, Patrick F. Daly
PS 024, Primary School 24
PS 094, The Henry Longfellow
PS 124, Silas B. Dutcher
PS 169, Sunset Park
PS 230, Doris L. Cohen
PS 456, The Elizabeth Jennings School for Bold Explorers
PS 516, Sunset Park Avenue Elementary School
PS 896, The School of Creativity & Innovation

WIT & WISDOM

Great Minds Wit & Wisdom

PS 10, Magnet School of Math, Science and Design Technology
PS 029, John M. Harrigan
PS 032, Samuel Mills Sprole
PS 038, The Pacific
PS 039, Henry Bristow
PS 058, The Carroll
PS 107, John W. Kimball
PS 118, The Maurice Sendak Community School
PS 130, The Parkside
PS 131
PS 146, The Brooklyn New School
PS 154, The Windsor Terrace School
PS 172, Beacon School of Excellence
PS 261, Zipporah Mills
PS 295
PS 321, William Penn
PS 958

Literacy

The District 15 Literacy team is focusing on the following three aspects for School Year 2025-26:

- **Strengthening Tier 1 ELA instruction.** This means making sure the main reading and writing lessons that all students receive are as strong and effective as possible.
- **Increasing classroom teachers' knowledge of foundational literacy** and how to effectively teach early reading skills to students in grades K through 2.
- **Move towards a complete Multi-Tiered System of Support for ELA.** This means all schools will have a system of literacy teamwork and extra help in place. That way, if students needs more support, they get different levels of help to make sure they succeed. An important part of this teamwork structure is about checking in on students regularly and giving them the right tools to learn.

Literacy



Targeted Support: The District 15 Literacy team will also increase job-embedded supports and coaching, in tandem with Teaching Matters, for these 10 schools:

15K001	15K015	15K024	15K094	15K124
15K146	15K169	15K456	15K516	15K958



Teacher Professional Learning:

The District 15 Literacy will offer a 6-part professional learning series for all teachers called “LIFT” (Literacy Instruction for Every Tier). This series will help teachers increase their knowledge around the elements of the Science of Reading. A deeper understanding of these elements will allow teachers to implement curricular and intervention programs in a more strategic way, thus helping all students build strong reading skills. Participating teachers will receive 12 hours of CTLE credit and a micro certification in the Science of Reading.

NYCPS & D15 Math Vision

- Students are **empowered to make sense of mathematics** both in the classroom and beyond including developing **mathematical thinking** and regularly engaging in mathematical **collaboration and discourse**;
- Teachers facilitate instruction that is **student-centered, inquiry-based**, coherent and in an environment that fosters **belonging and high expectations**; and
- Content provides opportunities for students to engage in **productive struggle** with **cognitively demanding**, mathematical **concepts** that are **connected** to **one another** and the **world** around them.



Putting the Vision Into Action

2025-2026 Math Strategic Planning Math Focus

- **Strategically elevate student voices** to build mathematical confidence and dismantle systems that contribute to negative math identities.
- **Plan lessons** that leverage math and instructional routines to ensure access for all students, creating opportunities for every voice to contribute.
- **Strengthen lesson synthesis** by using student work to explicitly connect learning to goals, placing students at the center of their own learning.

D15 Mathematics Guide


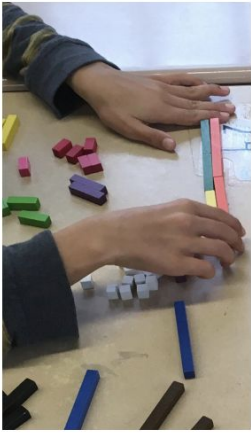

	From:	To:
1	Beginning with modeling	Beginning with sensemaking
2	Different tasks based on prior performance	Shared, Low-floor, High-ceiling Tasks
3	Discourse to demonstrate understanding	Discourse to develop understanding
4	Deficit-based support	Asset-based support
5	Using lesson materials from a variety of sources	Shared High-Quality Instructional Materials



DRAFT

**NYCPS Shifts in Mathematics
Aligned Strategic Math Guide**

*NYC Public Schools District 15
Rafael T. Alvarez, Superintendent*



[D15 Math Guidebook v1.pdf](#)

School	Grades	2025 -2026 Curriculum
15K001	Elem	enVision 2-4 (Piloting IM K & 5)
15K010	Elem	Investigations K-5 (Piloting IM)
15K015	Elem	Illustrative Math K-5
15K024	Elem	K-2 Illustrative Math 3-5 Investigations
15K029	Elem	Eureka Squared K-5
15K032	Elem	enVision K-5
15K038	Elem	Illustrative Math K-5
15K039	Elem	Illustrative Math K-5
15K058	Elem	Investigations
15K094	Elem	Eureka Squared K-5
15K107	Elem	Eureka Squared K-5
15K118	Elem	Illustrative Math K-5
15K124	Elem	Illustrative Math K-5
15K130	Elem	Illustrative Math K-5
15K131	Elem	Eureka
15K146	Elem	Eureka Squared/Eureka
15K154	Elem	Illustrative Math
15K169	Elem	Eureka
15K172	Elem	Eureka Squared
15K230	Elem	Investigations K-5, Piloting Illustrative Math
15K261	Elem	Illustrative Math K-5
15K295	Elem	Illustrative Math K-5
15K321	Elem	Eureka Squared/Eureka
15K456	Elem	Illustrative Math K-1
15K516	Elem	Illustrative Math K-2 & Eureka 3-5
15K896	Elem	Illustrative Math K-5
15K958	Elem	Illustrative Math K-3

D15 Math Curriculum

School	Grades	2025 -2026 Curriculum
15K051	Middle School	Illustrative Math
15K088	Middle School	Illustrative Math
15K136	Middle School	Illustrative Math
15K428	Middle School	Illustrative Math
15K442	Middle School	Illustrative Math
15K443	Middle School	Illustrative Math
15K447	Middle School	Illustrative Math
15K497	6-12	Illustrative Math
15K656	9-12	Illustrative Math Algebra 1
15K676	Middle School	Illustrative Math
15K821	Middle School	Illustrative Math
15K839	Middle School	Illustrative Math

Professional Learning to Support Curriculum

K-5 Professional Learning

K-5 Math Shifts & MTSS PL Series

Illustrative Math PL options

- K-2 IM Implementation Series
- 3-5 IM Implementation Series

Job Embedded Coaching:

- School Level Partnership with Metamorphosis
- D15 Coaching

6-12 Illustrative Math

All Math Teachers:

- 6th/6A IM PL Series
- 7th/7a IM PL Series
- 8th/Alg 1 IM PL Series

New Math Teachers:

- Grade Specific Unit Unpacking PL

Job Embedded Coaching:

- All Schools get a Bank Street Coach

Math Professional Learning & Coaching



Elementary Schools



Math Leads Series

Focusing on MTSS and using an Outcomes-Driven Model



IM Implementations Series

For teachers (grades K-2 3-5)



Targeted additional coaching support for selected schools



Grades 6-12 Schools



All teachers: Math Shifts/ IM Implementation Series
(4 times/year)



Tiered support
Unit unpacking,
new-to IM workshops



Continued job-embedded support coaching
with Bank St.

Literacy

Year 2 (SY 2025-2026): Strengthen Tier 1 ELA Instruction



PROFESSIONAL LEARNING

Provide advanced
phonics training for
grade 3-8 teachers



PROFESSIONAL LEARNING

Facilitate Middle
School Literacy
Leads' visits to
observe
HMH/WW/EL
implementation in
other districts



PROFESSIONAL LEARNING

Continue to
strengthen
relationships
between HMH and
WW Elementary
School Literacy Leads



COACHING

Deliver job-embedded
literacy support to
specific schools via
District Literacy Points



COACHING

Coordinate job-
embedded literacy
support through
external partners like
Teaching Matters and
Acadience



TEAMING

Establish a
instructional working
group to strengthen
the 5th-to-6th grade
transition



RESOURCE

Release updated
Curriculum
Implementation
Guides

Literacy

Year 2 (SY 2025-2026): Increase Teachers' Knowledge of Foundational Literacy Instruction



PROFESSIONAL LEARNING

Coordinate Level 1
Orton Gillingham
training for six
cohorts (300
educators)



PROFESSIONAL LEARNING

Provide a series of
Science of Reading
learning modules
(LIFT) for teachers



PROFESSIONAL LEARNING

Organize
principal and AP
intervisitations to
observe foundational
literacy programs



RESOURCE

Release updated
"Five Pillars of
Reading Strategies"
handbook

Literacy

Year 2 (SY 2025-2026): Moving Towards a "Complete" Intervention/MTSS Structure in All Schools



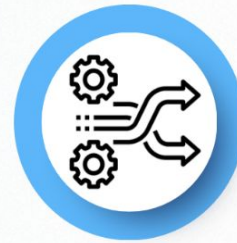
PROFESSIONAL LEARNING

Guide K-2 schools in
using Acadience
results for
foundational literacy
instruction



PROFESSIONAL LEARNING

Develop school-based
intervention experts
through
comprehensive
teacher training
around approved
intervention programs



SYSTEMIC CHANGE

Transition schools
to approved
intervention
curricula



SCHOOL CULTURE

All schools can
name their
students in need of
Tier 2 and Tier 3
intervention

Robust D15 Professional Learning Catalog for Teachers, Leaders and Support Staff



- Every School has a targeted PL Plan aligned to their CEP/our DCEP which we review
- Central PL Catalog offers great deal of learning opportunities related to the shifts, MTSS and curriculum supports

D15 Literacy PL Snapshot

PL Catalog 2025-2026 EXCEL

File Edit View Insert Format Data Tools Extensions Help

100% \$ % .0 .00 123 Default... - 10 + B I A

A	B	C	D	E	F	G
PL Title	Faciliator/Department	Audience	Decription	Dates	Time	Location
D15 ELA LIFT Series - Session 1 Literacy Instruction For (every) Tier	Literacy Team	Assistant Principals	Pillar 1: Phonemic Awareness	10/21/2025	60 min during AP conference	conference location
D15 ELA LIFT Series - Session 2 A Literacy Instruction For (every) Tier	Literacy Team	Assistant Principals	Pillar 2: Phonics (Foundational Grades PK-2)	11/18/2025	60 min during AP conference	conference location
D15 ELA LIFT Series - Session 2 B Literacy Instruction For (every) Tier	Literacy Team	Assistant Principals	Pillar 2: Phonics (Advanced Grades 3+)	1/20/2026	60 min during AP conference	conference location
D15 ELA LIFT Series - Session 3 Literacy Instruction For (every) Tier	Literacy Team	Assistant Principals	Pillar 3: Fluency	2/24/2026	60 min during AP conference	conference location
D15 ELA LIFT Series - Session 4 Literacy Instruction For (every) Tier	Literacy Team	Assistant Principals	Pillar 4: Vocabulary	3/17/2026	60 min during AP conference	conference location
D15 ELA LIFT Series - Session 5 Literacy Instruction For (every) Tier	Literacy Team	Assistant Principals	Pillar 5: Comprehension	5/19/2025	60 min during AP conference	conference location
D15 ELA LIFT Series - Session 1 Literacy Instruction For (every) Tier	Literacy Team	K-12 Teachers	Pillar 1: Phonemic Awareness	10/27/2025	60 min during Mon PL	Virtual - Teams link TBD
D15 ELA LIFT Series - Session 2 A Literacy Instruction For (every) Tier	Literacy Team	K-12 Teachers	Pillar 2: Phonics (Foundational Grades PK-2)	11/10/2025	60 min during Mon PL	Virtual - Teams link TBD
D15 ELA LIFT Series - Session 2 B Literacy Instruction For (every) Tier	Literacy Team	K-12 Teachers	Pillar 2: Phonics (Advanced Grades 3+)	1/12/2026	60 min during Mon PL	Virtual - Teams link TBD
D15 ELA LIFT Series - Session 3 Literacy Instruction For (every) Tier	Literacy Team	K-12 Teachers	Pillar 3: Fluency	2/23/2026	60 min during Mon PL	Virtual - Teams link TBD
D15 ELA LIFT Series - Session 4 Literacy Instruction For (every) Tier	Literacy Team	K-12 Teachers	Pillar 4: Vocabulary	3/9/2026	60 min during Mon PL	Virtual - Teams link TBD
D15 ELA LIFT Series - Session 5 Literacy Instruction For (every) Tier	Literacy Team	K-12 Teachers	Pillar 5: Comprehension	5/18/2025	60 min during Mon PL	Virtual - Teams link TBD
D15 ELA LIFT Series - Session 1						

D15 Math PL Snapshot

PL Catalog 2025-2026 EXCEL

File Edit View Insert Format Data Tools Extensions Help

100% 123 Default... 10

	A	B	C	D	E	F	G	H
		Facilitator/Department	Audience	Description	Dates	Time	Location	CTLE Credit
1								
2	D15 3-5 Imagine IM PL Session 1/3	Math Team	3-5 Teachers	Professional Learning for 3-5 teachers implementing Imagine IM Session 1/3	10/10/2025	8:30 - 2:50	Location TBD	yes
3	D15 3-5 Imagine IM PL Session 2/3	Math Team	3-5 Teachers	Professional Learning for 3-5 teachers implementing Imagine IM	12/10/2025	8:30 - 2:50	Location TBD	yes
4	D15 3-5 Imagine IM PL Session 3	Math Team	3-5 Teachers	Professional Learning for 3-5 teachers implementing Imagine IM	2/11/2026	8:30 - 2:50	Location TBD	yes
5	D15 Grade 1 IM PL & Planning	Math Team	K-5 Teachers	June Planning for 1st Grade teachers currently implementing Imagine IM	6/9/2026	8:30 - 2:50	131 Livingston	yes
6	D15 Grade 2 IM PL & Planning	Math Team	K-5 Teachers	June Planning for 2nd Grade teachers currently implementing Imagine IM	6/10/2026	8:30 - 2:50	131 Livingston	yes
7	D15 Grade 3 IM PL & Planning	Math Team	K-5 Teachers	June Planning for 3rd Grade teachers currently implementing Imagine IM	6/12/2026	8:30 - 2:50	131 Livingston	yes
8	D15 Grade 4 IM PL & Planning	Math Team	K-5 Teachers	June Planning for 4th Grade teachers currently implementing Imagine IM	6/16/2026	8:30 - 2:50	131 Livingston	yes
9	D15 Grade 5 IM PL & Planning	Math Team	K-5 Teachers	June Planning for 5th Grade teachers currently implementing Imagine IM	6/17/2026	8:30 - 2:50	131 Livingston	yes
10	D15 K-2 Imagine IM PL Session 1/3	Math Team	K-2 Teachers	Professional Learning for K-2 teachers implementing Imagine IM Session 1/3	10/8/2025	8:30 - 2:50	Location TBD	yes
11	D15 K-2 Imagine IM PL Session 2/3	Math Team	K-2 Teachers	Professional Learning for K-2 teachers implementing Imagine IM	12/9/2025	8:30 - 2:50	Location TBD	yes
12	D15 K-2 Imagine IM PL Session 3	Math Team	K-2 Teachers	Professional Learning for K-2 teachers implementing Imagine IM	2/10/2026	8:30 - 2:50	Location TBD	yes
13	D15 K-5 Math Leads Session 1/4	Math Team	Math Coaches	PL for Math Coaches & Math Leads supporting K-5 Session 1/4	11/21/2025	8:30 - 2:30	131 Livingston	yes
14	D15 K-5 Math Leads Session 2/4	Math Team	Math Coaches	PL for Math Coaches & Math Leads supporting K-5	1/30/2026	8:30 - 2:30	131 Livingston	yes
15	D15 K-5 Math Leads Session 3/4	Math Team	Math Coaches	PL for Math Coaches & Math Leads supporting K-5	3/27/2026	8:30 - 2:30	131 Livingston	yes
16	D15 Kindergarten IM PL & Planning	Math Team	K-5 Teachers	June Planning for Kindergarten teachers currently implementing Imagine IM	6/3/2026	8:30 - 2:50	131 Livingston	yes
17	D15/Bank Street Math Intervention Ongoing AP Conference PL	D15 Math Team + Bank St.	Assistant Principals	AP intervisitation focusing on Math Shift 1: Beginning with Sensemaking	10/21/2025	Morning	conference location	no
18	D15/Bank Street Math Intervention Ongoing AP Conference PL	D15 Math Team + Bank St.	Assistant Principals	AP intervisitation focusing on Math Shift 2: Low Floor/High Ceiling Tasks	11/18/2025	Morning	conference location	no
19	D15/Bank Street Math Intervention Ongoing AP Conference PL	D15 Math Team + Bank St.	Assistant Principals	AP intervisitation focusing on Math Shift 3: Discourse to Develop Understanding	12/16/2025	Morning	conference location	no
20	D15/Bank Street Math Intervention Ongoing AP Conference PL	D15 Math Team + Bank St.	Assistant Principals	AP intervisitation focusing on understanding the role of explicit instruction in an IM classroom	1/20/2026	Morning	conference location	no
		D15 Math						

Convert to table

Master List SFI FIA Family CCOR Math Chron Ahe FIU/MU PRI SPED

District 15 Family Professional Learning / Workshops

6:00pm - 7:00pm Virtual

- **Scope and Sequence of Math and Reading - 10/14/2025**

- Presented by D15 ELA and Math Instructional Team

- **Reading Part 2 - 11/17/2025**

- Presented by D15 ELA Instructional Team

- **Math Part 2 - 01/13/2025**

- Presented by D15 Math Instructional Team

- **Social Emotional Learning - 2/10/2026**

- Presented by D15 Principal / Social Worker

- **Conflict Resolution - 4/14/2026**

- Presented by Donna Dawson & Zachary Miller - Student Services Managers

- **Mental Health - 5/12/2026**

- Presented by a Social Worker

Please reach out to bdiaz14@schools.nyc.gov or mortiz57@schools.nyc.gov for more information.

Project Open Arms

What is Project Open Arms?

Project Open Arms is a multi-agency NYCPS Division that offers a comprehensive plan to support families seeking asylum and ensure children are provided a full range of services.

This multi-agency plan highlights wraparound services to ensure newcomer families and their children will have access to critical academic, social-emotional, and language-based supports needed to be successful in New York City Public Schools.

Project Open Arms Plan

Comprised of the below components:

- Interagency Collaboration Partnership with **DYCD, MOIA, DHS, HRA, and nonprofits** for after-school programs, legal aid, and resource awareness.
- Partnerships with Community Based Organizations (CBO's)
- Enrollment
- Language Access
- Transportaton
- Budget & Finance
- Academic & Extracurricular Programming /Support
- Social-Emotional & Mental Health

Agency Partners and Acronyms Explained

DYCD – New York City Department of Youth and Community Development

- Oversees after-school programs, youth services, and community-based initiatives.

MOIA – Mayor's Office of Immigrant Affairs

- Coordinates city services for immigrant communities, including legal aid, language access, and outreach.

DHS – New York City Department of Homeless Services

- Runs the city's homeless shelter system and related support services.

HRA – New York City Human Resources Administration

- Administers public benefits (food assistance, cash assistance, Medicaid) and social services

Trainings facilitated and Organized by Project Open Arms 2024-2025- *All of our Schools Attended*

The **Supporting Immigrant Students & Families** training, led by Project Open Arms and Senior Field Counsel, provides resources, protocols, and legal guidance for assisting immigrant students and families, with clear steps for responding to non-local law enforcement. NYCPS does not track immigration or asylum status.

Know Their Rights trainings outline the legal protections migrant youth and families have under federal, state, and local law, ensuring staff can advocate effectively.

The **Welcoming and Inclusive Schools Guide** from the Multilingual and Immigrant Student Support Team helps educators create affirming environments by understanding immigrant experiences, recognizing cultural wealth, and fostering belonging.

The **Rightful Presence** series, offered by the Office of Open Arms in partnership with the SWIFT Education Center, explores true belonging, inherent value, and shared power, and offers strategies to embed these principles across school communities.

****25-26 Dates for Know Your Rights Trainings and the others above for staff will be released soon.**

Policies and Resources

DOE Immigration InfoHub

[DOE Info-Hub](#)

DOE Policy

[DOE Immigrant Families](#)

Project Open Arms

[Project Open Arms](#)

[OPEN ARMS Families Seeking Asylum: Comprehensive Support Plan](#)

Protocols for Non-Local Law Enforcement

[DOE Protocols for Non-Local Enforcement](#)

- [Legal Resources - MOIA](#)
- [Know Your Rights Guide](#)

Superintendent Townhall: *Special Guest - Project Open Arms*

September 16, 2025 - 6:00-7:00pm (Virtual)

Focus: Supporting our Asylum Seeking and Migrant Students & Families

Please [share your questions HERE](#) before to help us prepare for the townhall.



School Leadership & Programming

District 15 Principals

15K001, Wanda Lopez Ramirez

15K010, Laura Scott

15K015, Julie Cavanagh

15K024, Maria Diaz

15K029, Rebecca Fagin

15K032, Denise Watson-Adin

15K038, Pascale Pradel

15K039, Sara Panag

15K051, Pui Lam ("Jack") Chan

15K058, Katherine Dello Stritto

15K088, Ailene Altman Mitchell

15K094, Cristina Gonzalez

15K107, Joanna Cohen

15K118, Jacqueline Smith

15K124, Valeria Ossa

15K130, Stephen Cedermark

15K131, Stamatina Hatzimichalis

15K136, Myrna Gonzalez Rojas

15K146, Diane Castelucci

15K154, Kathryn Fitzgerald

15K169, Emily Hurst

15K172, Erika Gundersen

15K230, Maria Della Ragione

15K261, Erica Davis

15K295, Jean Marie McInerney

15K321, Elizabeth Phillips

15K428, Cybi Ip

15K442, Noreen Mills

15K443, Frank Giordano

15K447, Arin Rusch

15K456, Malika Johnson-Willis

15K497 (6-12), Samantha Schmoeger

15K516, Jessica Knudson

15K656 (HS), Daniel Vecchiano

15K676(Harbor MS), Priscilla Figueroa

15K767, Cynthia Lascano

15K821, Jennifer Spalding

15K839, Michael Perlberg

15K863, Barrett Braithwaite

15K896, Ruth Rodriguez-Rivera

15K958, Emily Shapiro

School Programming

Priorities

- Special Education - 96.1% fully served
- ELL - academic Intervention for those flagged by Universal Screeners and NYSESLAT
- MTSS - Tier 2 Intervention Periods

Ongoing initiatives

- Financial Literacy - K-4 NYC Kids Rise Curriculum
- Smaller Class sizes at 17 schools (will share more at September CEC)

Questions & Answers

