



2018-2019 District 15 Strategic Planning

Division of Space Management

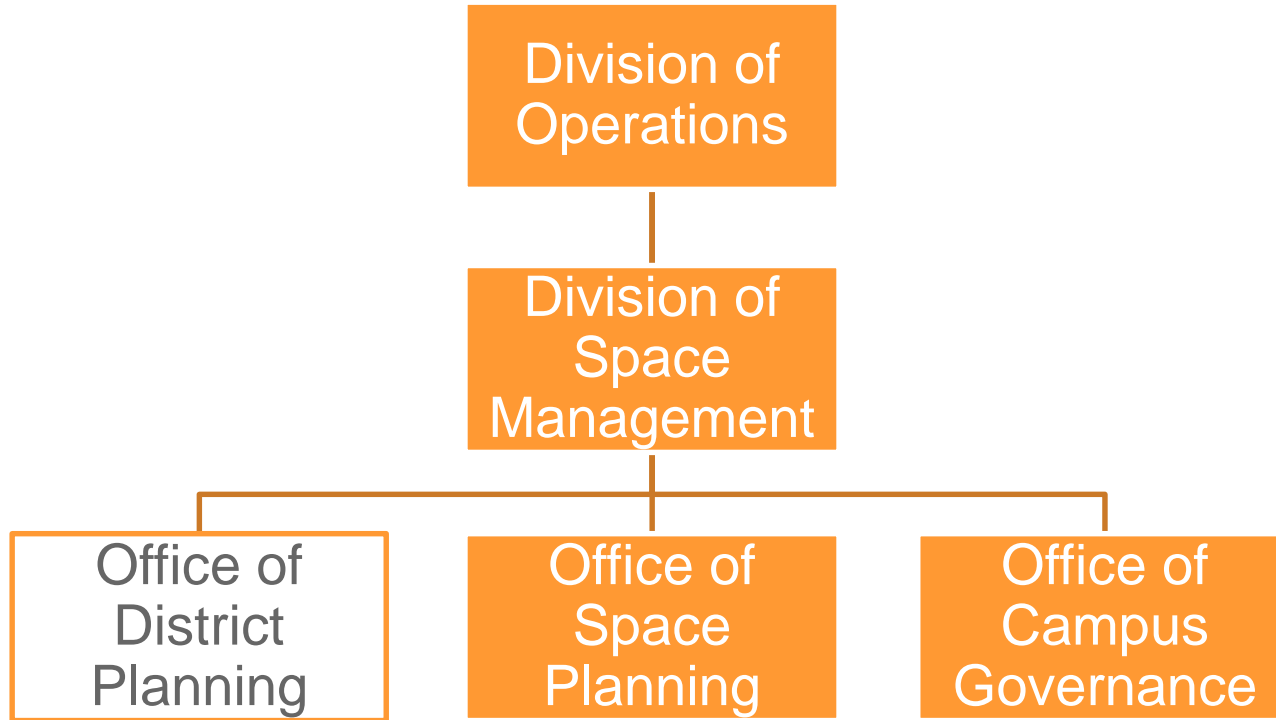
January 16, 2018

Table of Contents

- | | | |
|------|-----------------------------------|--------------------|
| I. | Division Overview | <i>Slide 3</i> |
| II. | The District Planning Process | <i>Slide 4-6</i> |
| III. | District 15 Landscape | <i>Slide 7-17</i> |
| IV. | Needs Analysis Discussion | <i>Slide 18-22</i> |
| V. | A-190 and A-185 Timelines | <i>Slide 23-26</i> |
| VI. | Questions and Contact Information | <i>Slide 27-28</i> |

Division of Space Management

The Division of Space Management partners with superintendents, principals, and communities to identify and address district needs, primarily in the areas of school structure, learning conditions, access to schools and programs, and campus governance.



The District Planning Process

Citywide Planning Priorities

The work of the Office of District Planning focuses on four main priority areas in our efforts to support all schools to improve and provide an excellent education for all students.



School Scale and Sustainability: Many schools across the city struggle with low enrollment, which creates budgetary and programmatic challenges. Supports or structural changes at these schools, such as consolidations, aim to provide students with a more robust educational experience.



Overcrowding and Transportable Classroom Units: Schools where enrollment exceeds capacity or TCUs are required to accommodate students must be addressed in order to improve learning conditions for students. This may include identifying opportunities to increase capacity or shifting enrollment from overcrowded schools to those with available seats.



Programmatic Needs: In order to ensure students in each district have access to the unique programming that supports their needs and interests, specialized programs may be added or expanded at district schools. This includes programs aimed at particular populations, such as D75 programs and ASD Nest programs, as well as those that may provide new types of academic opportunities for students, such as pre-k, Gifted and Talented, and programs aimed at serving over-aged students.



New and Reconfiguring Schools: New district and charter schools in new construction or underutilized space may increase the availability of seats in overcrowded areas or provide families with access to a wider variety of school options to meet their needs. Similarly, as approved by their authorizers, charter schools may expand to serve new grade levels, and district schools may reconfigure the grades served to better align with standard entry points and meet demand at particular grade levels.

Levers for Change

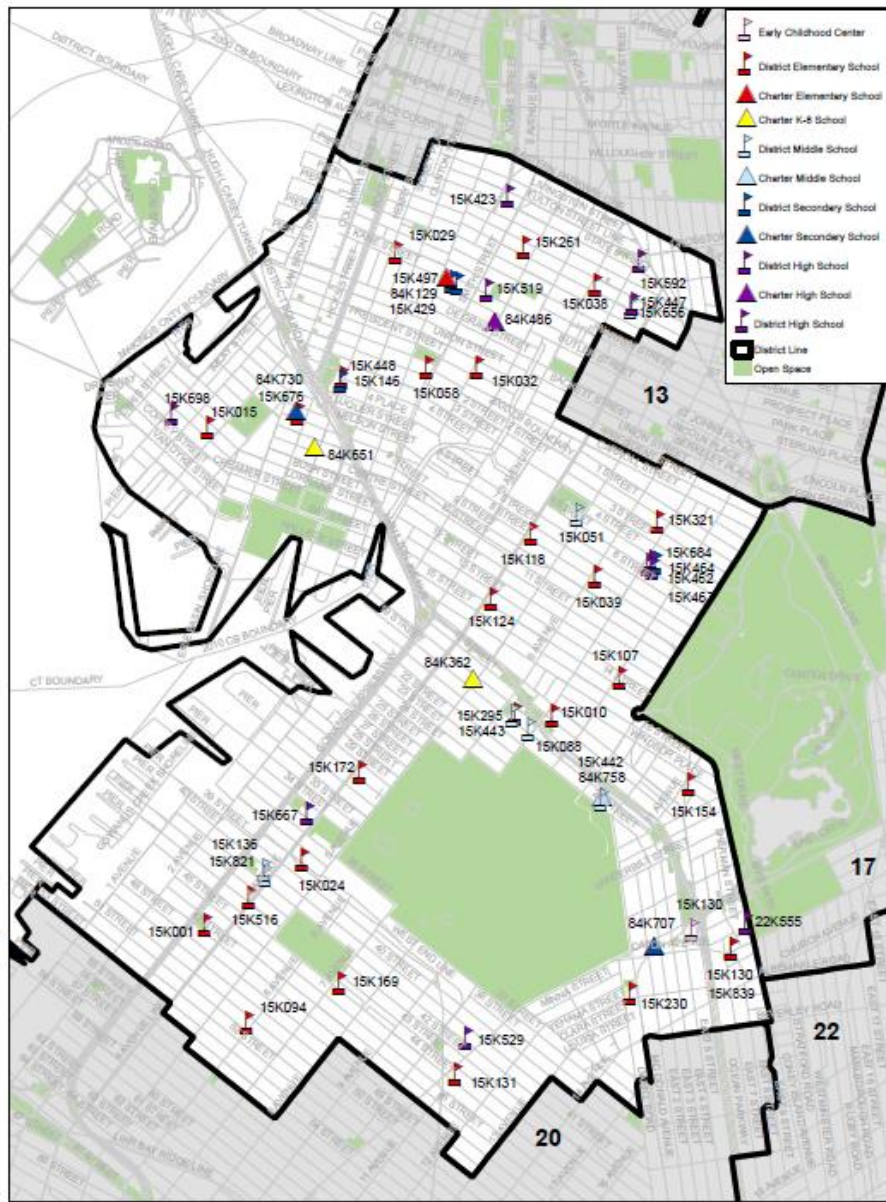
In collaboration with superintendents, the Division of Space Management partners with other offices across the DOE, including the Office of Student Enrollment, the Office of School Design and Charter Partnership, and the Division of Family and Community Engagement in particular, and community stakeholders to develop, propose, and implement changes to address some of our most pressing district needs and improve educational options and learning conditions for our students.

Levers for Change

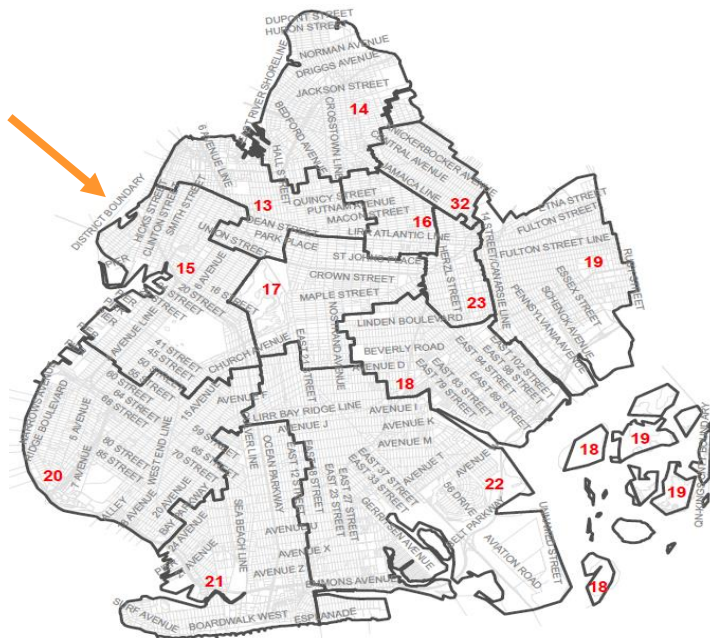
- ✓ Re-zoning
- ✓ Unzoning
- ✓ Consolidation
- ✓ Closure
- ✓ New School
- ✓ Grade Reconfiguration
- ✓ Re-siting
- ✓ New Program
- ✓ Enrollment Planning
- ✓ Redesign

District 15 Landscape

District 15 Schools



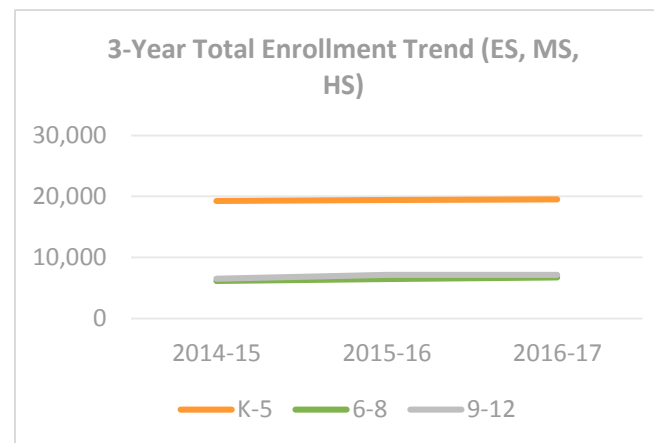
District 15 Landscape



Total Enrollment (3-Year Trend) ²			
Grade Level	2014-15	2015-16	2016-17
Pre-K	1,276	1,599	1,646
K-5	19,252	19,443	19,535
6-8	6,135	6,478	6,723
9-12	6,544	7,135	7,140
PK-12 Total	33,207	34,655	35,044

Number of Pre-K Center Sites:	6
-------------------------------	---

Count of Schools by Type ¹		
School Type	District	Charter
Elementary School	26	1
K-8	0	2
Middle School	8	1
6-12	3	2
High School	8	0
Transfer HS	3	1
Total	48	7



1. In the 2016-2017 school year.
2. Based on 2016-2017 Audited Register for district schools and 2016-2017 Headcount for charter schools.

District 15 Landscape

Student Demographics ¹									
	K-8		9-12			K-8		9-12	
	District 15	Boro	District 15	Boro		District 15	Boro	District 15	Boro
% Asian	17%	16%	5%	16%	% ELL	18%	14%	8%	11%
% Hispanic	37%	29%	40%	27%	% FRL or HRA Eligible	63%	80%	72%	74%
% Black	10%	36%	41%	41%	% IEP	17%	17%	21%	17%
% White	33%	18%	11%	14%					
% Other	3%	2%	3%	2%					

District 15 Profile				
# of Overutilized Buildings ²	26		# of Underutilized Buildings ⁴	5
# of Buildings with TCUs	1		# of Renewal Schools ⁵	0
# of schools with enrollment below 250 ³	4		# of transfer schools with enrollment below 200 ³	1

Sources:

1. 2016-2017 Audited Register
2. 2015-2016 Blue Book
3. 2016-2017 Audited Register for district schools and 2016-2017 Headcount for charter schools
4. 2016-2017 Under-Utilized Space Memorandum
5. 2016-2017 school year

*All data includes both district and charter schools

Kindergarten Capacity and Projected Enrollment

Overall, Kindergarten enrollment currently exceeds Blue Book capacity in District 15, although efficient programming allows schools to optimize the use of space to accommodate overall kindergarten demand in the district. The DOE will continue to monitor enrollment trends and work with the community to ensure future needs are met.

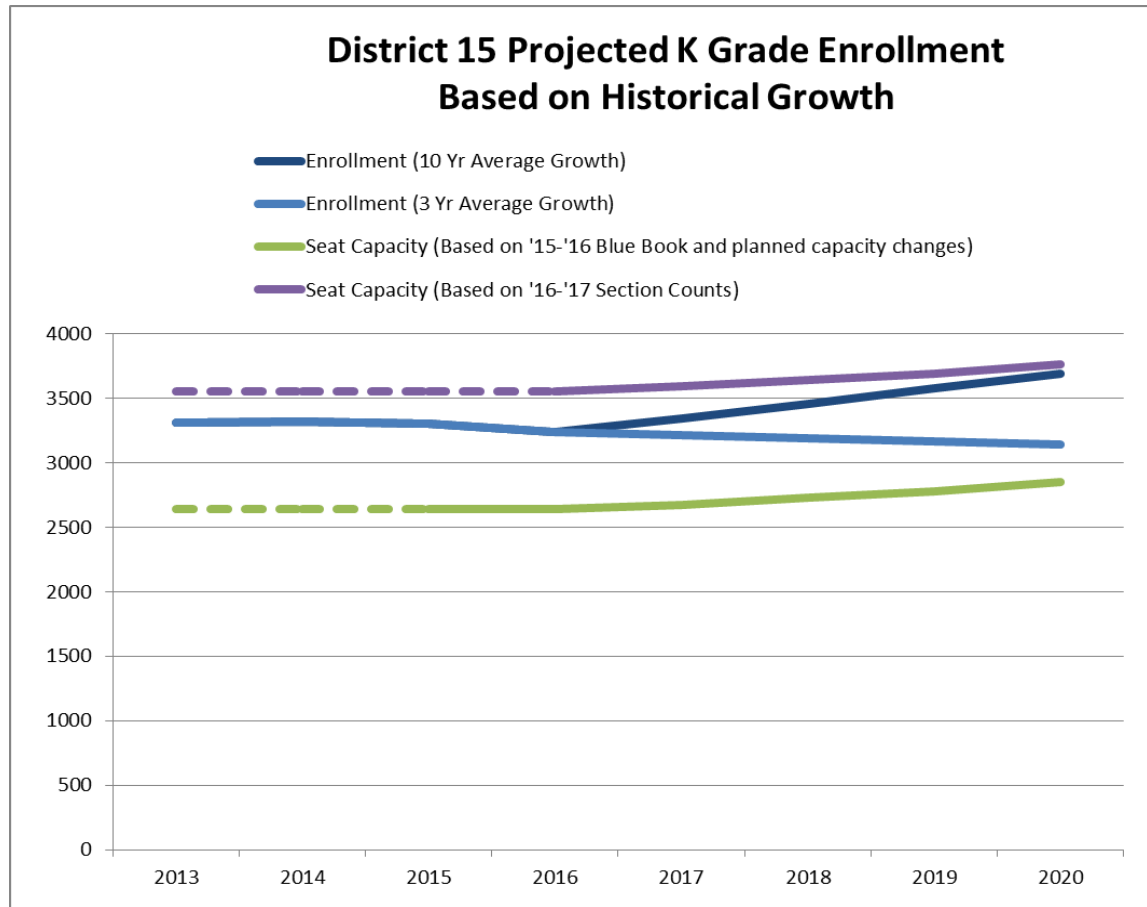


Chart includes district and charter enrollment and capacity within the district.

6th Grade Capacity and Projected Enrollment

Middle school enrollment is approaching seat capacity and is projected to increase in future years across District 15. The DOE will continue to monitor enrollment and explore ways to maximize capacity to accommodate future growth.

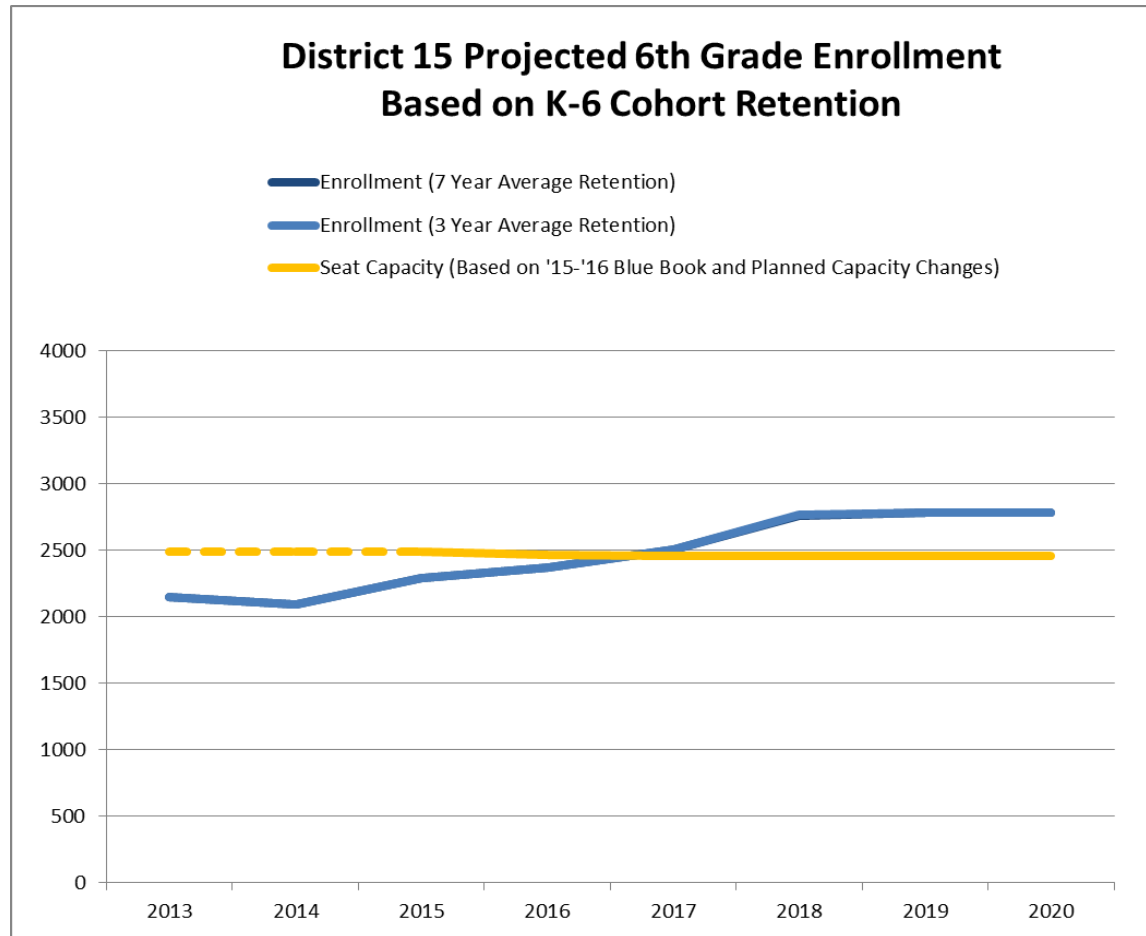


Chart includes district and charter enrollment and capacity within the district.

Schools with Enrollment <250

Schools with Enrollment <250 (<200 for Transfer Schools)*

DBN	School Name	Grade Span	2014-2015 Enrollment ¹	2015-2016 Enrollment ²	2016-2017 Enrollment ³
15K423	Brooklyn Frontiers High School	9-12	184	174	173
15K429	Digital Arts and Cinema Technology High School	9-12	250	220	190
15K442	M.S. 442 Carroll Gardens School for Innovation	6-8	193	217	211
15K463	Secondary School for Journalism	9-12	270	212	236
15K676	Red Hook Neighborhood School	K-5	219	198	186

Sources:

1. 2014-2015 Audited Register
2. 2015-2016 Audited Register
3. 2016-2017 Audited Register

* Phasing-in schools not included on list.

Renewal Schools

Renewal Schools

There are no Renewal Schools in District 15

Under-Utilized Buildings

Each year, the Department of Education (“DOE”) publishes a list of under-utilized buildings. Inclusion on this list recognizes that a building potentially has excess space for the 2016-2017 school year that can be utilized more efficiently, but does not imply that the DOE will necessarily propose a change in building utilization. Any proposed changes would be preceded by an analysis of available space by the Division of Space Management, as well as extensive community engagement.

Under-Utilized	Building Code	Orgs in Building	Building Utilization Rate
150 – 299 seats	K917	Brooklyn College Academy P.S. K077	67%
	K804	Cobble Hill School of American Studies P.S. 373	73%
300 + seats	K027	Red Hook Neighborhood School Summit Academy Charter School	53%
	K655	The Math & Science Exploratory School Brooklyn High School of the Arts	72%
	K460 (John Jay Campus)	Secondary School for Law Secondary School for Journalism Park Slope Collegiate Millennium Brooklyn High School	74%

Source: Under-Utilized Space Memorandum as of February 23, 2017, available at <http://schools.nyc.gov/NR/rdonlyres/6D8EA76A-82FA-4740-9ED1-66BCABEE8BFB/208881/UnderutilizedSpaceMemorandum20172019.pdf>

Overutilized Buildings

The DOE uses various strategies to alleviate overcrowding and to address increases in enrollment. These strategies include new construction, rezoning the catchment areas of zoned schools, helping principals program their instructional space more efficiently, repurposing and creating capacity through room conversion projects, and siting new or expanded schools and programs in underutilized facilities.

Building ID	Orgs in Building	Building Utilization Rate
K564	Sunset Park High School, P.S. 371 Lilian L. Rashkis	102%
K230	P.S. 230 Doris L. Cohen	108%
K130	P.S. 130 The Parkside	112%
K261	P.S. 261 Philip Livingston	113%
K369	P.S. 369 Coy Cox School	114%
K845	P.S. 295, New Voices School of Academic and Creative Arts	115%
K124	P.S. 124 Silas B. Dutcher	115%
K834	The Children's School	117%
K032	P.S. 32 Samuel Mills Sprole, M.S. 442*	117%
K051	M.S. 51 William Alexander	118%
K029	P.S. 29 John M. Harrigan	119%
K010	Magnet School of Math, Science and Design Technology	125%
K001	P.S. 1 The Bergen	130%
K058	P.S. 58 The Carroll	131%

Source: 2015-2016 Blue Book, available at http://schools.nyc.gov/NR/ronlyres/40C1E850-6E4B-4511-9D5D-4CE499E6773D/198862/OverutilizationReportFINAL6_1_15.pdf

* M.S. 442 has since been re-sited from K032 to Bishop Ford.

Overutilized Buildings (cont.)

Building ID	Orgs in Building	Building Utilization Rate
K871	LYFE, Pathways	141%
K321	P.S. 321 William Penn	142%
K094	P.S. 094 The Henry Longfellow	144%
K154	The Windsor Terrace School	145%
K169	P.S. 169 Sunset Park	145%
K131	P.S. 131 Brooklyn	146%
K812	P.S. 1 The Bergen Annex	152%
K107	P.S. 107 John W. Kimball	155%
K763	The Maurice Sendak Community School	156%
K333	Sunset Park Avenues Elementary School	157%
K172	P.S. 172 Beacon School of Excellence	157%
K039	P.S. 039 Henry Bristow	172%

Needs Analysis Discussion



Overcrowding and Temporary Classroom Units

District Needs

1. Overcrowding at the elementary school level
 - 19 out of 24 buildings serving elementary school students have utilization rates over 100%.
 - Over the past five years, elementary school enrollment in District 15 has increased by 15%.
 - In 2017, 7 elementary schools were approved to cap and overflow students and 5 elementary schools had zoned waitlists.
2. Increasing middle school enrollment
 - Over the past five years, District 15 middle school enrollment has increased by 20%.
 - District Planning will continue to monitor enrollment patterns at the middle school level across the district and work with the Superintendent to identify opportunities to add additional sections at schools serving middle school grades.



Overcrowding and Temporary Classroom Units

District Needs

3. New Capacity

- Several new buildings are projected to open in District 15 over the next five years. District Planning will work with the Superintendent, CEC and impacted communities to determine the optimal use of this much-needed capacity.

Seats	Location	Projected Opening
230	7 th Ave and 48 th Street (Sunset Park)	2018-2019
436	317 Hoyt (Carrol Gardens)	2020-2021
404	5 th Ave and 36 th Street (Sunset Park)	2021-2022
332	8 th Ave and 46 th Street (Sunset Park)	2021-2022
646	Delvan Street (Red Hook)	2022-2023
332	4 th Ave and 43 rd Street (Sunset Park)	2022-2023

- Additional funding exists in the Capital Plan for the Park Slope subzone in District 15. District Planning will continue to work with the SCA, CEC 15 and District 15 Superintendent to find opportunities to use this funding.
- District Planning will work with the Superintendent and CEC 15 to create a new zone for the St. Agatha building (7th Ave and 48th Street) for the 2019-2020 school year.



Programmatic Needs

Potential Scenarios and Levers to Address Needs

1. Pre-K for All

- The Department of Education is continuing efforts to expand free, high-quality, full-day pre-kindergarten to make it available to every 4 year old in the city.
- District Planning will continue to work with the Superintendent and Division of Early Childhood Education to locate space for the expansion of existing programs and creation of new options to accommodate the demand for additional seats.



New and Reconfiguring Schools

District Needs

1. Charter Siting Requests

- 18 new and expanding charter schools have requested space in multiple districts in Brooklyn, including several in District 15. Although space in District 15 has not been identified to accommodate the requests below, the NYCDOE will continue to evaluate potential options.

Potential Charter Needs			
Preferred District(s)	School Name	Request Type	Grades Requested
13, 15, 17	New Dawn Charter Transfer High School	Temporary Re-siting	9-12
13,14,16,17,19,23,32	Uncommon Collegiate Elementary School 1	Expansion	K-4
13,14,16,17,19,23,32	Uncommon Collegiate Elementary School 2	Expansion	K-4
13	Uncommon High School @K458	BUP Revision	9-12
16, 17, 19, 23	Uncommon Leadership Prep Ocean Hill	Re-siting	5-8
16	Ember Charter School for Mindful Education, Innovation and Transformation (formerly TFOA)**	Expansion	5-8
17	Success Academy - New ES	New School	K-4
17	Unity Prep Charter School*	Co-location Extension	9-12
19	Achievement First Linden MS Expansion*	Expansion	5-8
19, 23	Achievement First Aspire Middle School*	Re-siting	5-8
21	Success Academy Bensonhurst Middle School	Expansion	5-8
22	Success Academy Bergen Beach Middle School	Expansion	5-8
32	Achievement First North Brooklyn Prep MS Expansion**	Expansion	5-8
13, 14, 15, 16	International Charter School of NY	Re-siting	K-5
16, 17, 18, 19, 23	Key Collegiate Charter School (via Building Excellent Schools)	New School	4-8
All	Success Academy Middle School	Expansion	5-8
All	Achievement First New Elementary School #2 (2018)	New School	K-4
All	Achievement First Empower MS Program	New Program	5-8

*Proposals approved by the PEP

**Posted proposals for PEP consideration

A-185 and A-190 Timelines

A-185 Timeline

Major Activity	2017				2018										
	SEP	OCT	NOV	DEC	JAN	FEB	MAR	APR	MAY	JUN	JUL	AUG	SEP	OCT	NOV
1. Identify Needs: The need to rezone can be raised by the CEC, schools, or the community.	Yellow				Yellow										
2. Stakeholder Engagement: This includes engaging the CEC, school principal, communities, and elected officials. Feedback from these discussions inform potential zone lines.					Yellow										
3. Zoning Scenario Development: The DOE analyzes enrollment trends, residential data, and school capacity to inform needs of the district and potential zoning scenarios.								Yellow							
4. Presentation of Proposed Zone Lines to CEC: ODP and the Superintendent present zone line changes to the CEC at a public meeting.													Yellow		
5. The CEC Votes: Within 45 days of proposal submission, the CEC votes on zonings scenario.														Yellow	

*Rezoning votes take place on this timeline so that changes to school admissions/enrollment can be included in admissions process for the following school year.

Rezoning Process

- 1. Identify Needs:** The need to rezone can be raised by the DOE, CEC, schools, or the community.
- 2. Stakeholder Engagement:** This includes engaging the CEC, school principals, communities, and elected officials. Feedback from these discussions inform potential zone lines.
- 3. Zoning Scenario Development:** The DOE analyzes enrollment trends, residential data, and school capacity to inform potential zoning scenarios.
- 4. Presentation of Proposed Zone Lines to CEC:** ODP and the Superintendent present zone line changes to the CEC at a public meeting.
- 5. CEC Vote:** Within 45 days of proposal submission, the CEC votes on zone line changes.

A-190 Timeline

Major Activity	90+ days	60 days	45 days	30 days	15 days	24 hrs	PEP Vote
1. District, School, and CEC Engagement	Yellow	Yellow	Yellow	Yellow	Yellow	Yellow	
2. Senior Leadership Walkthrough (if applicable)	Yellow	Yellow					
3. Post Notice, EIS, BUP (no later than 45 days prior to PEP vote)*		Yellow	Yellow				
4. Community Meetings prior to Joint Public Hearing (optional)			Yellow				
5. Conduct Joint Public Hearing* (30-45 days after posting EIS)				Yellow	Yellow		
6. Collection of Public Comments upon posting EIS*		Yellow	Yellow	Yellow	Yellow	Yellow	
7. Post Analysis of Public Comment*						Yellow	
8. PEP Vote*							Yellow

*Mandated by A-190

Questions?

Contact Information

Jamie Dollinger,
Director of
Planning

- jdollinger@schools.nyc.gov

Max Familian,
Associate
Director of
Planning

- mfamilian2@schools.nyc.gov

Will Candell,
Associate
Director of
Analytics

- wcandell@schools.nyc.gov

Office of District
Planning

- ODP@schools.nyc.gov