

BJG TECH LLC

THE INFORMATION CONTAINED IN THIS DRAWING IS THE SOLE PROPERTY OF  
BJG TECH LLC.  
APPROVED FOR PUBLIC RELEASE

TITLE  
Customer Drawings - SL

DWG. NO.  
IMB-0056-C  
DRAWN 3/9/2025

REV  
2.4

SHEET  
1 OF 6  
SIZE E

# ASSEMBLY STEPS

NOTE: SKIP STEPS 2, 3, AND 6 IF ADAPTER IS NOT REQUIRED

RETENTION RING

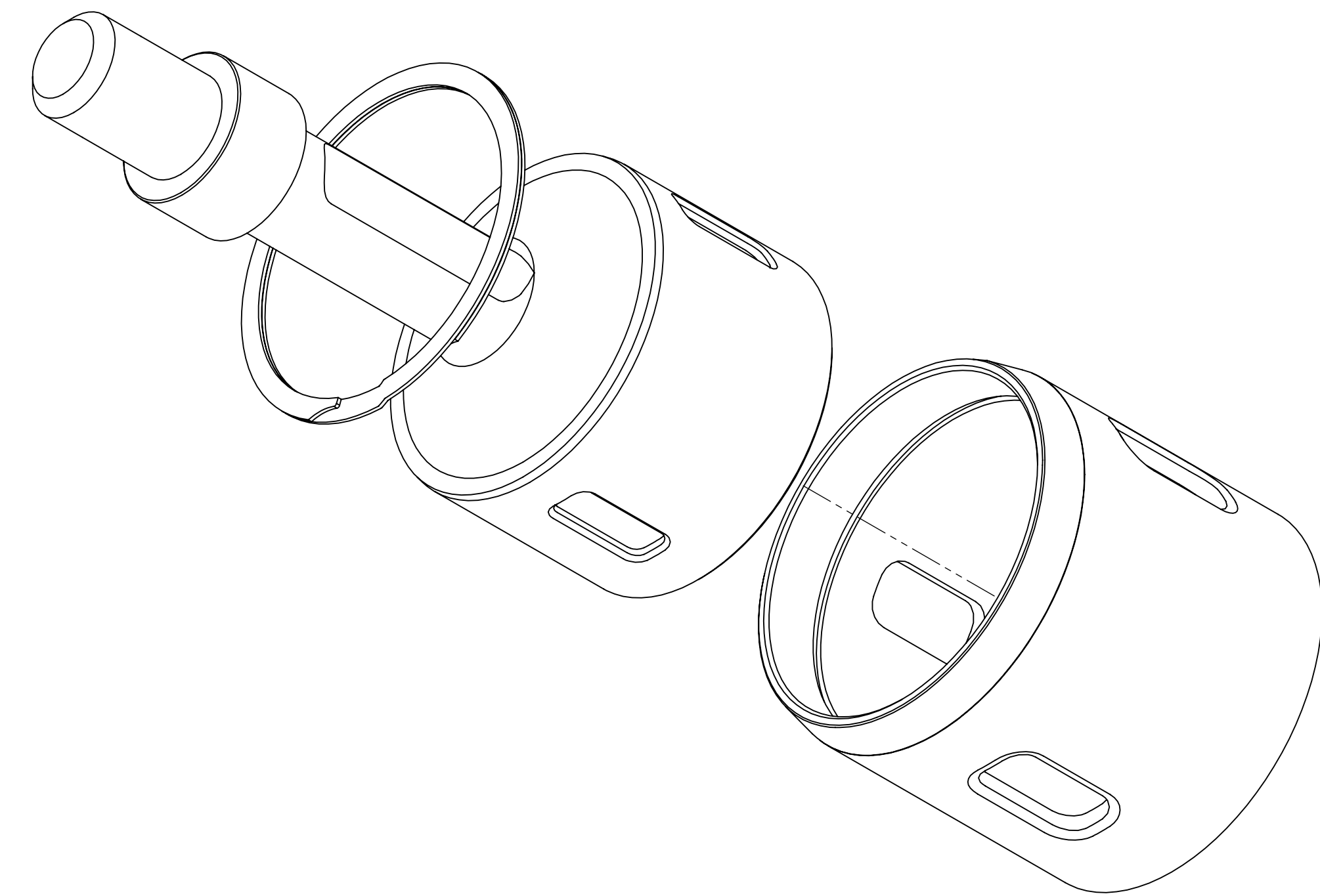
GUIDE GROOVES

RETENTION RING GROOVE INSIDE ADAPTOR

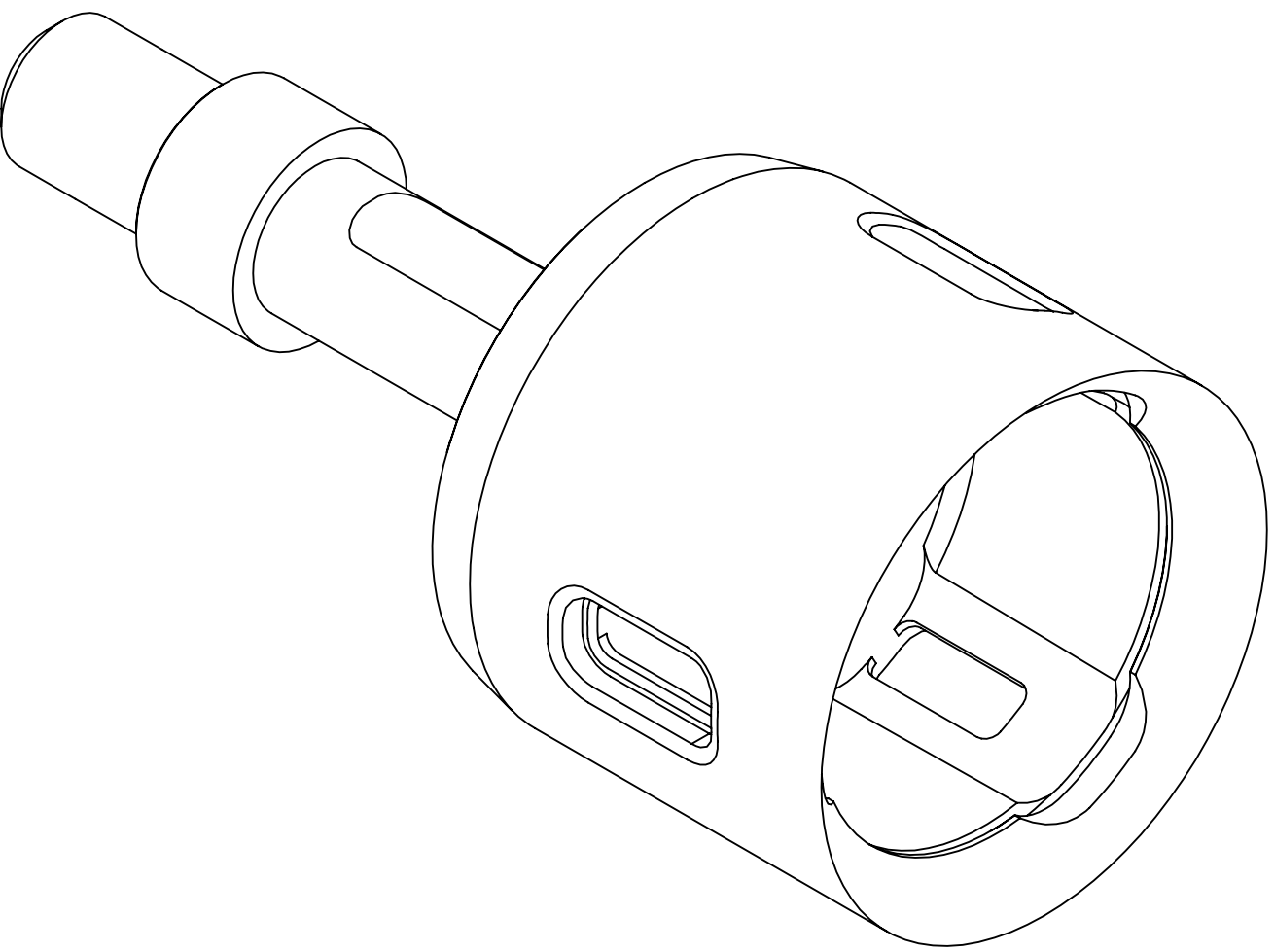
RETENTION SNAPS

SNAP ENGAGEMENT SLOTS

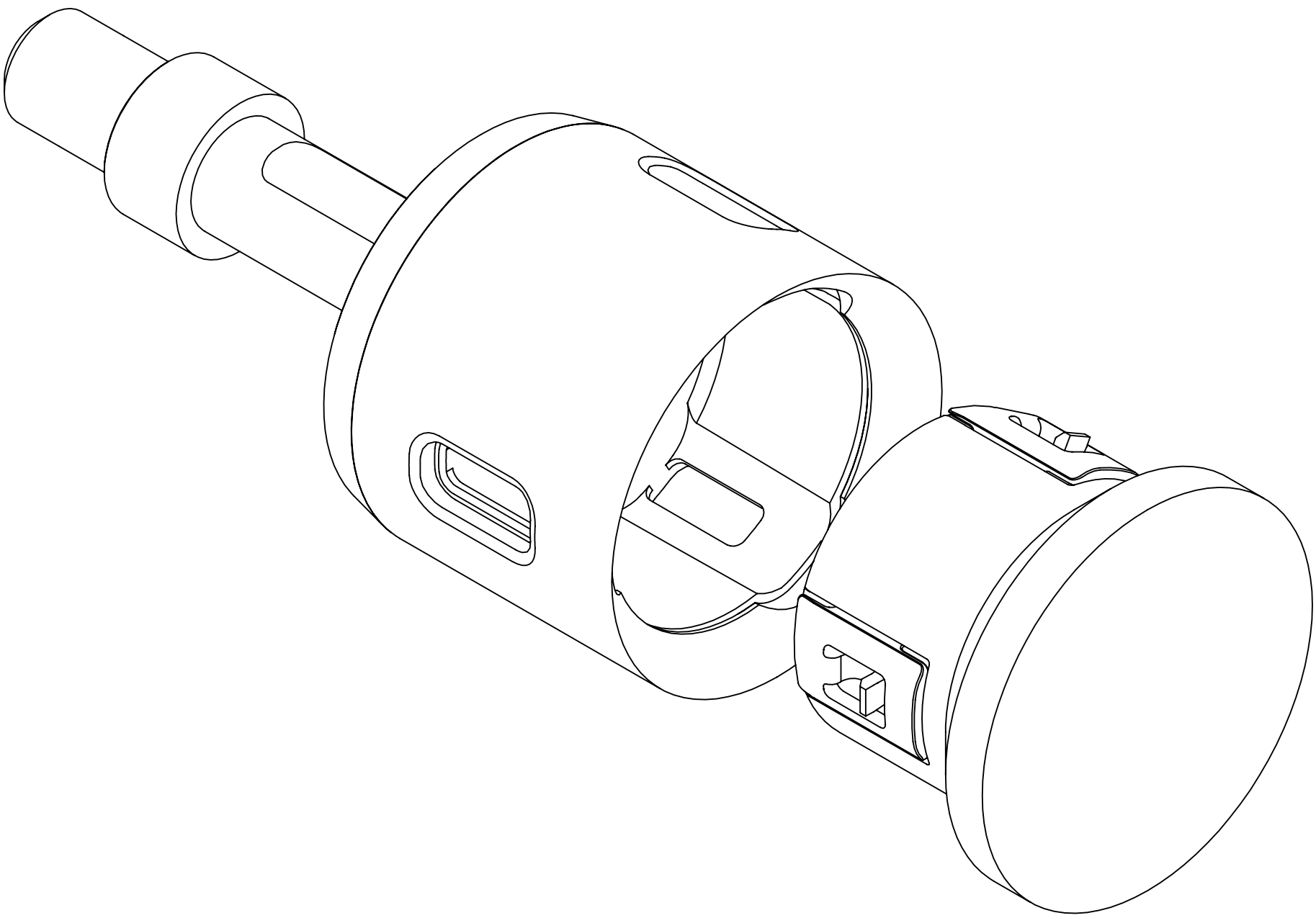
1. IDENTIFY FEATURES



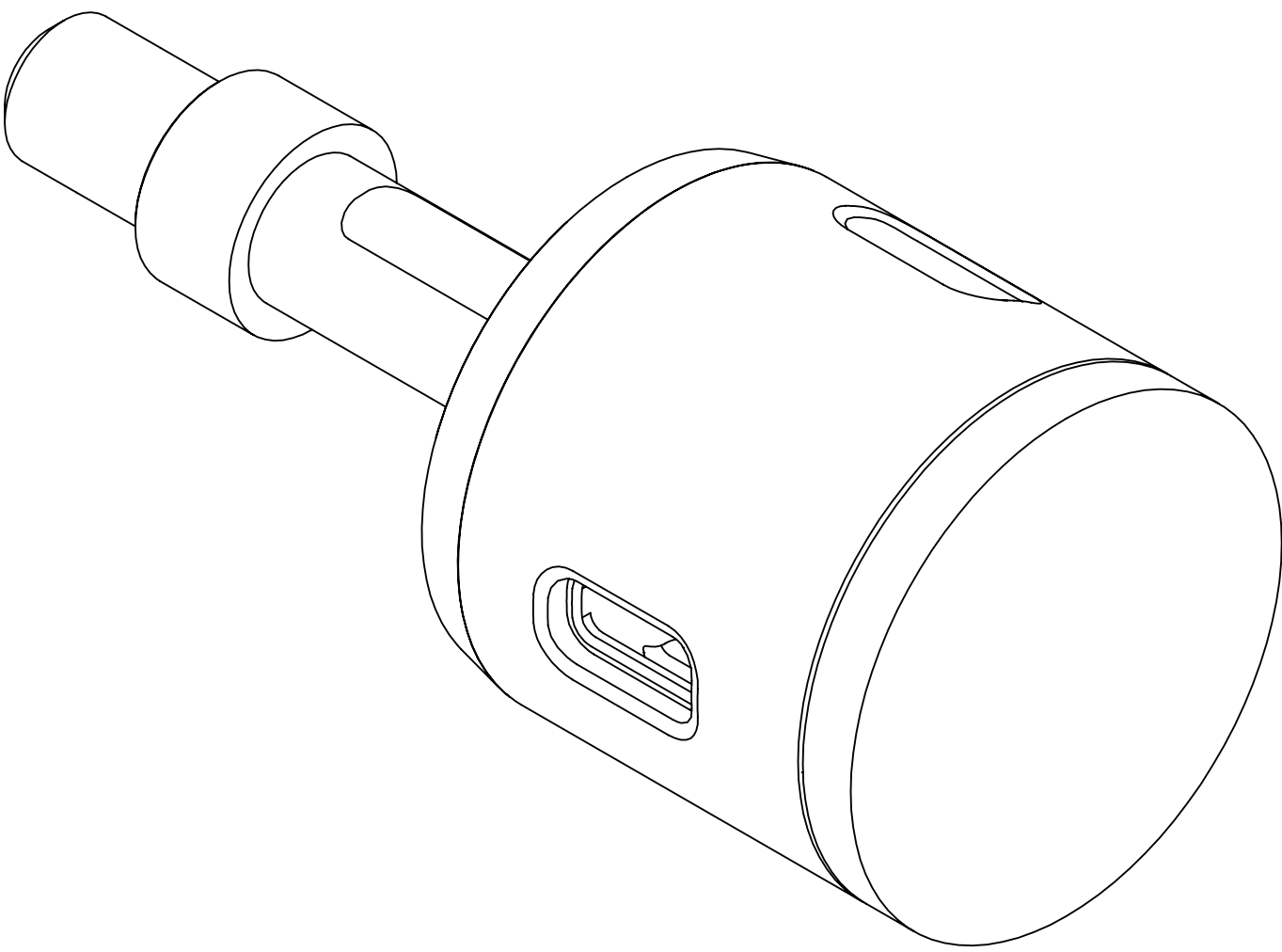
2. PUSH ADAPTER OVER CUP AND  
INSTALL RETENTION RING INTO  
RETENTION RING GROOVE INSIDE  
ADAPTER



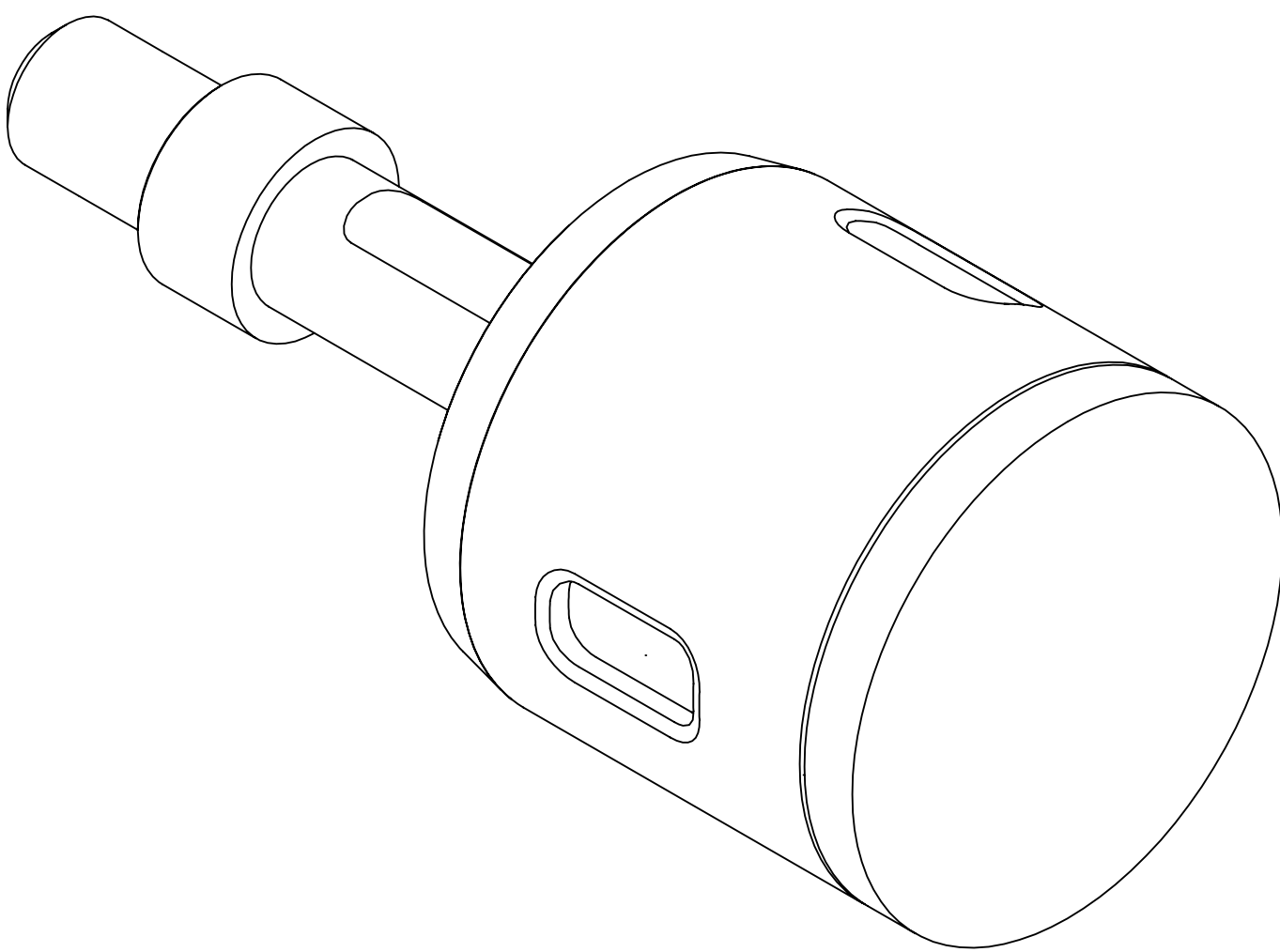
3. ALIGN ADAPTER SLOTS  
WITH CUP SLOTS



4. ALIGN RETENTION SNAPS TO  
GUIDE GROOVES



5. PUSH PUCK SECURELY  
INTO CUP



6. ROTATE ADAPTER UNTIL  
GUIDE GROOVES NOT  
VISIBLE

BJG TECH LLC

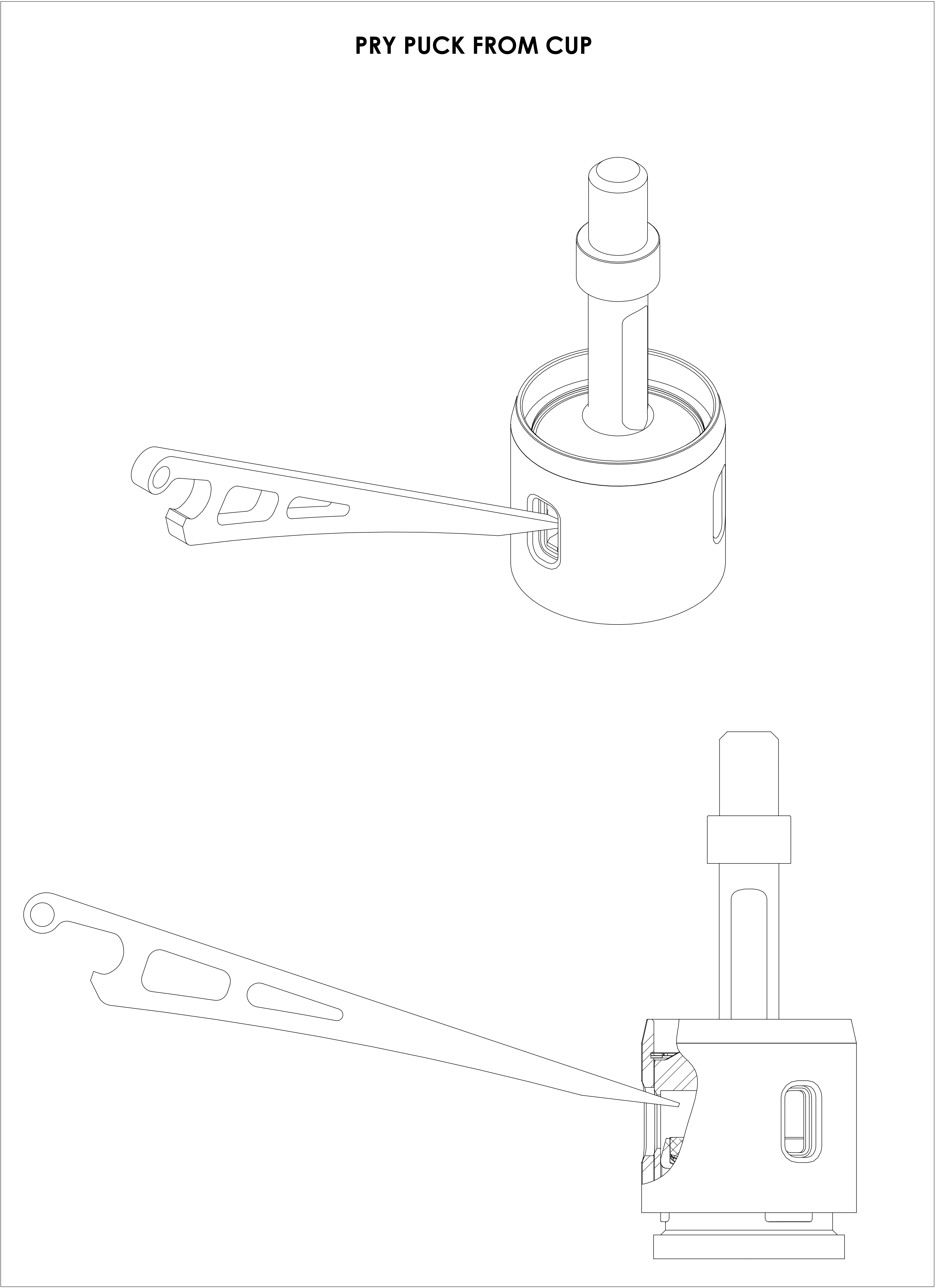
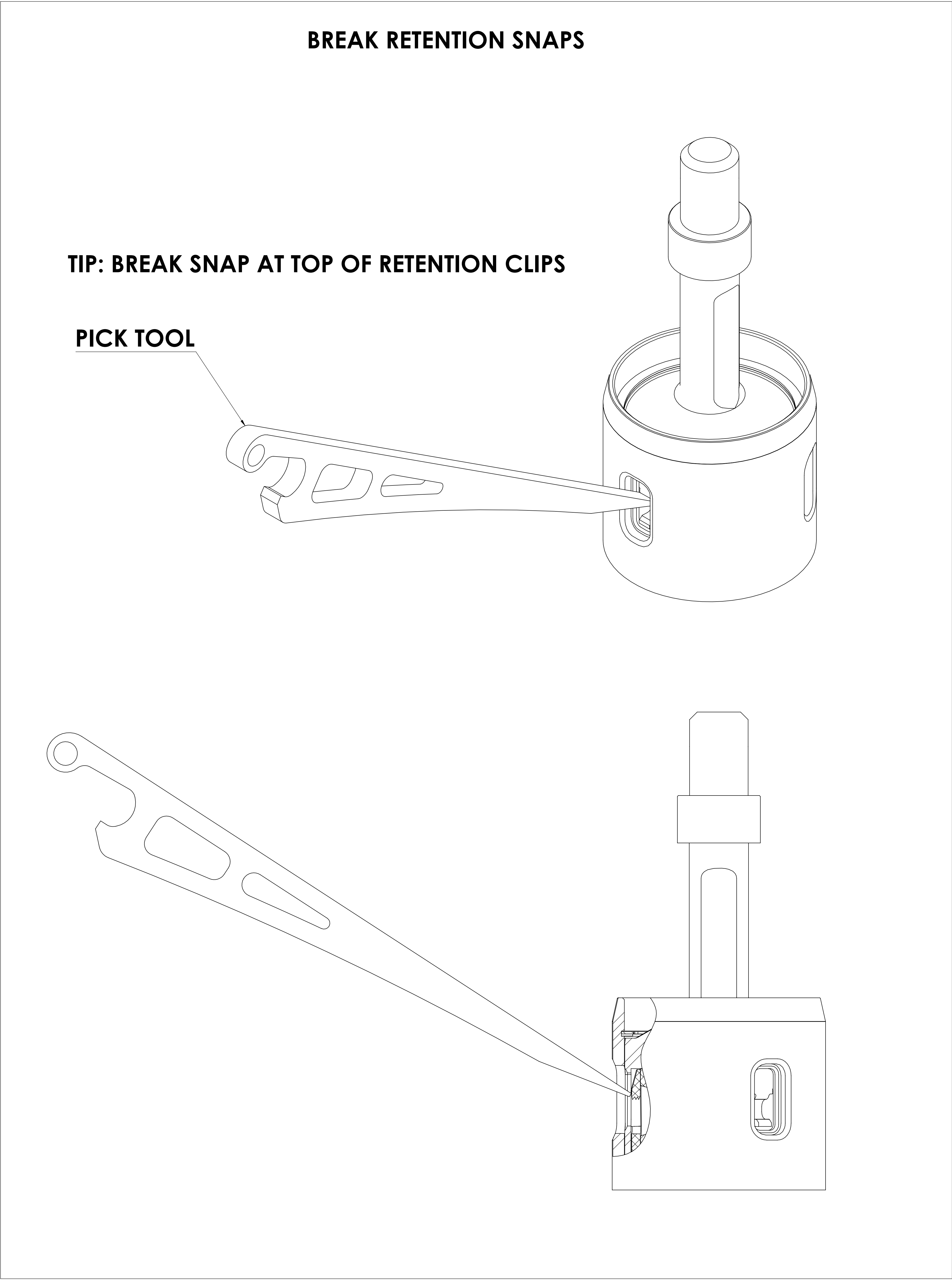
THE INFORMATION CONTAINED IN THIS DRAWING IS THE SOLE PROPERTY OF  
BJG TECH LLC.  
APPROVED FOR PUBLIC RELEASE

TITLE  
Customer Drawings - SL

DWG. NO.  
IMB-0056-C  
DRAWN 3/9/2025

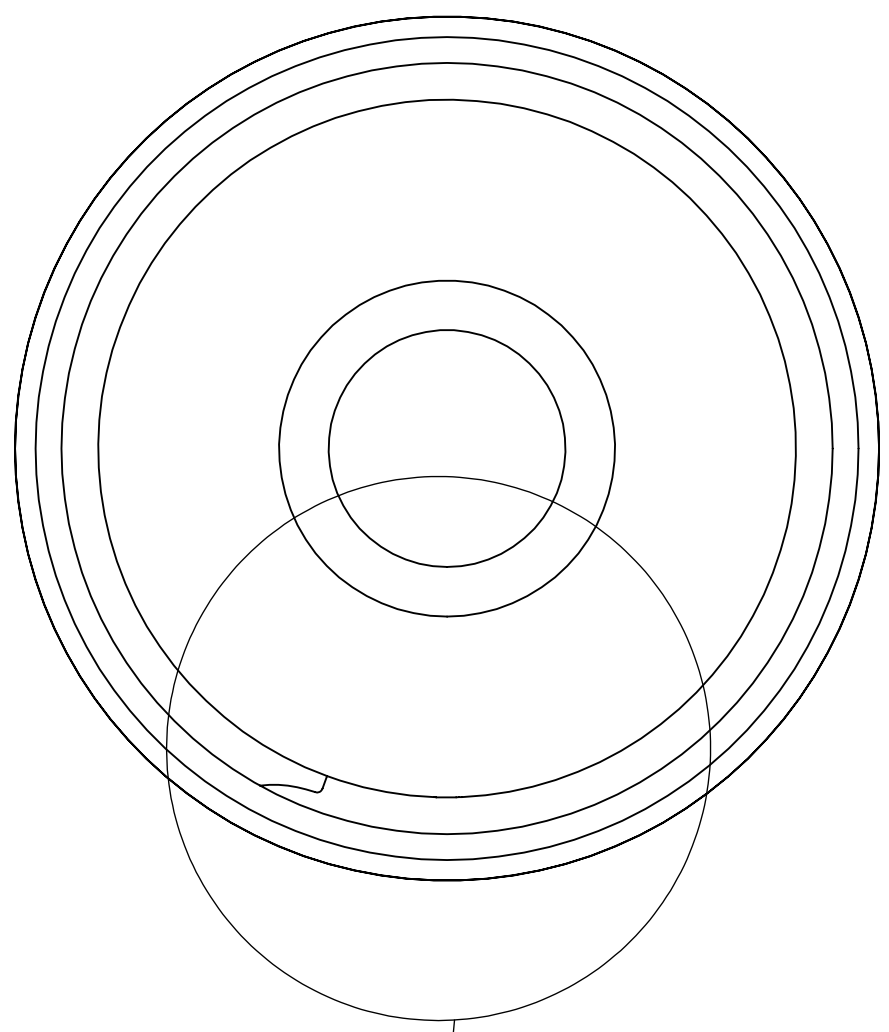
REV  
2.4

SHEET  
2 OF 6  
SIZE E

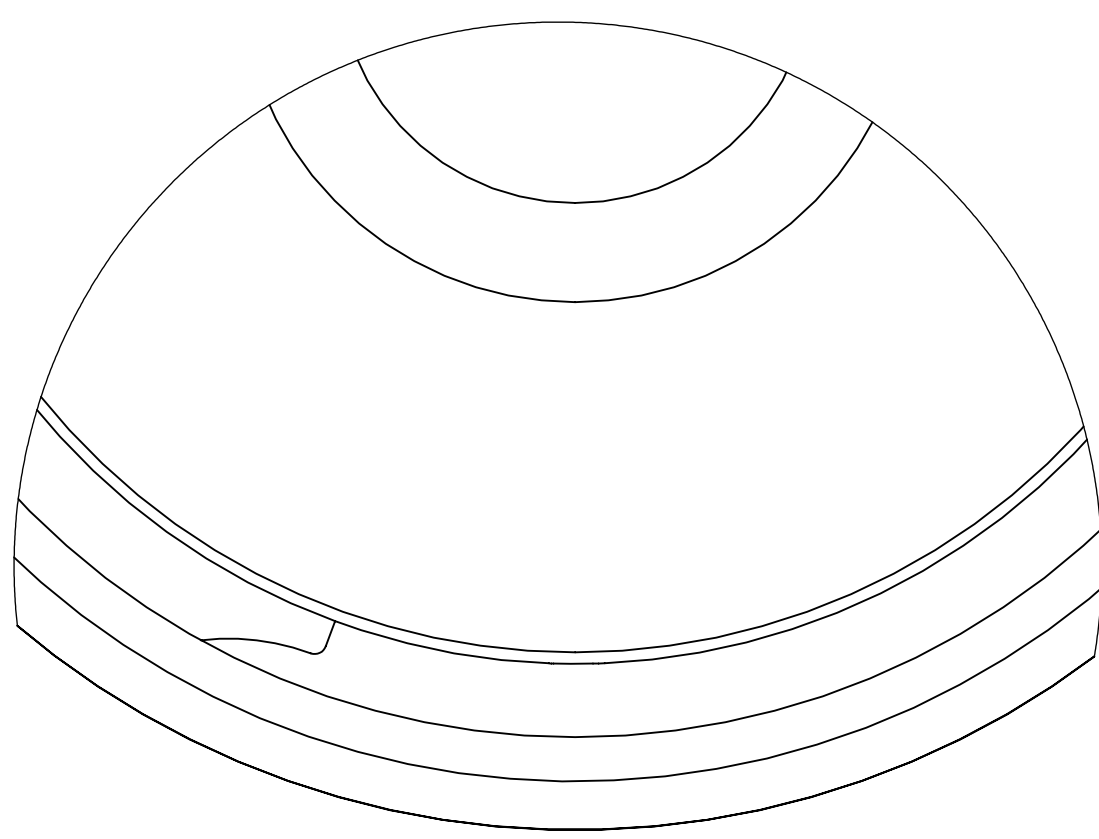


NOTE: SKIP THESE STEPS IF ADAPTOR IS NOT REQUIRED

LOCATE RETENTION RING GAP



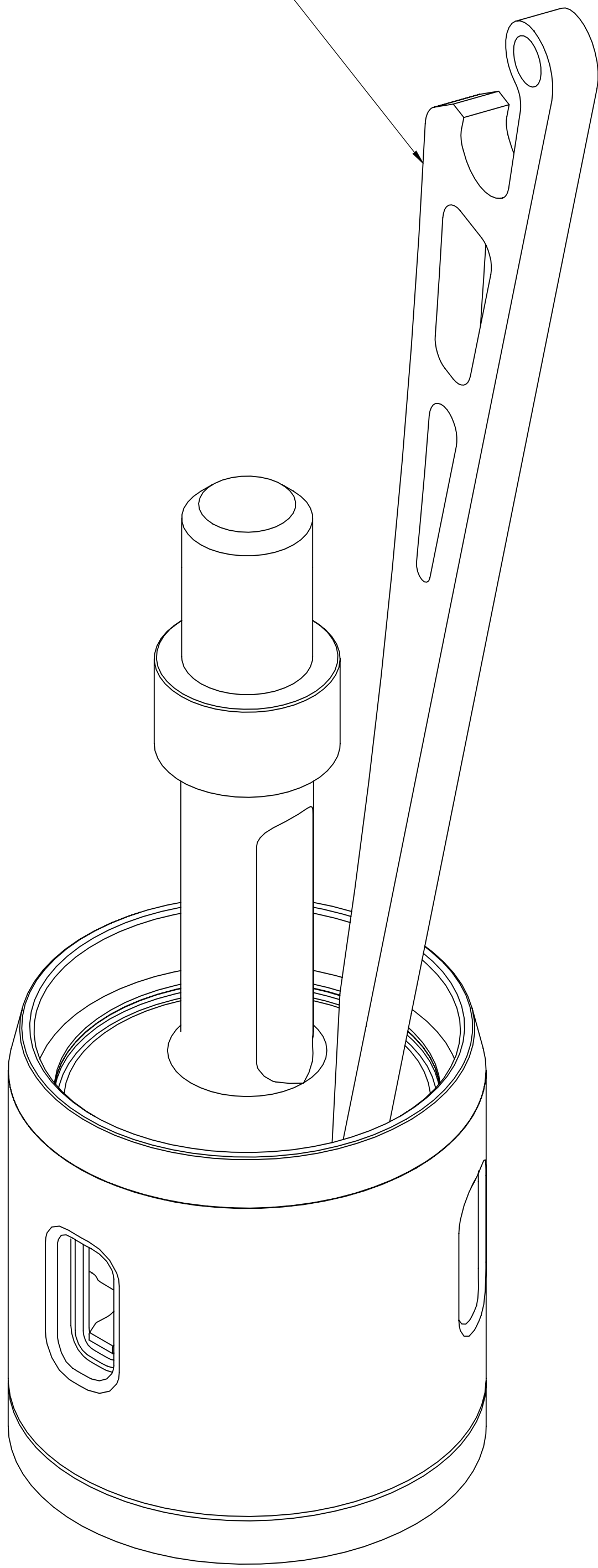
RETENTION RING GAP



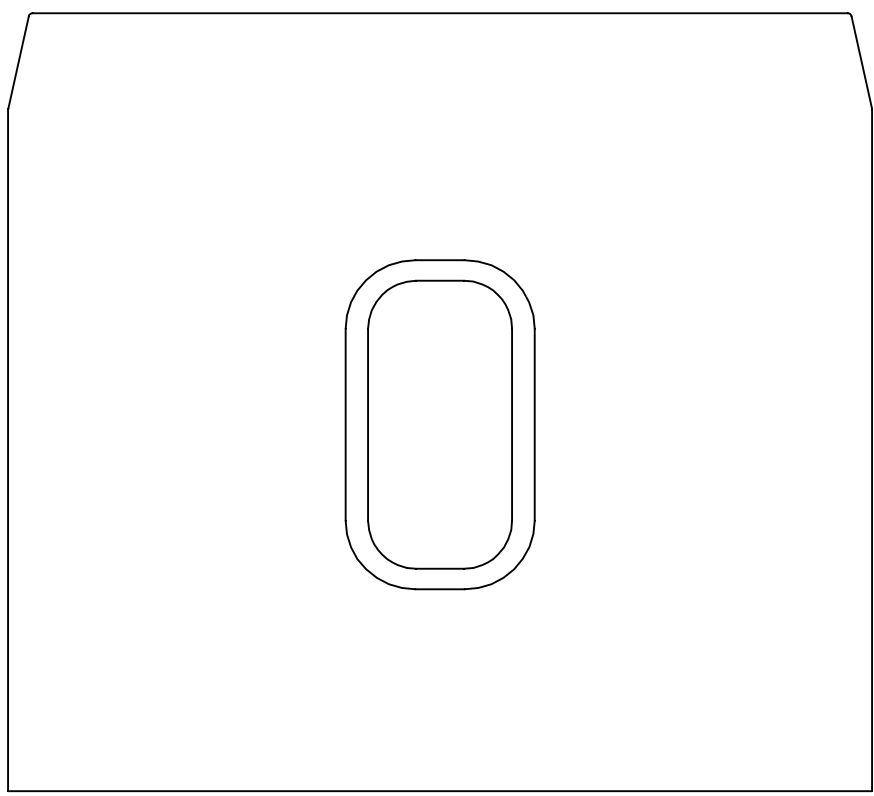
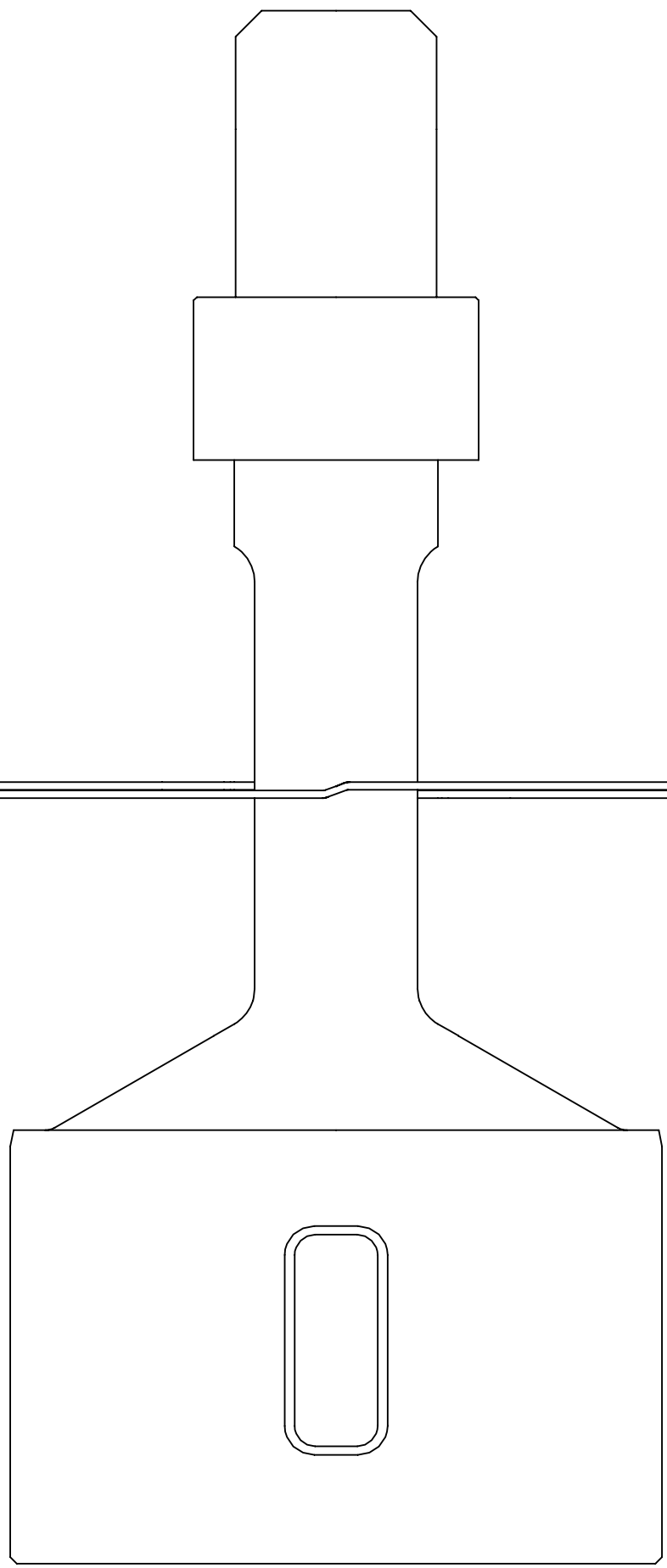
RETENTION RING GAP LOCATION

RELEASE RETENTION RING WITH PICK TOOL

PICK TOOL



SPIRAL OUT RETENTION RING AND REMOVE ADAPTER FROM CUP



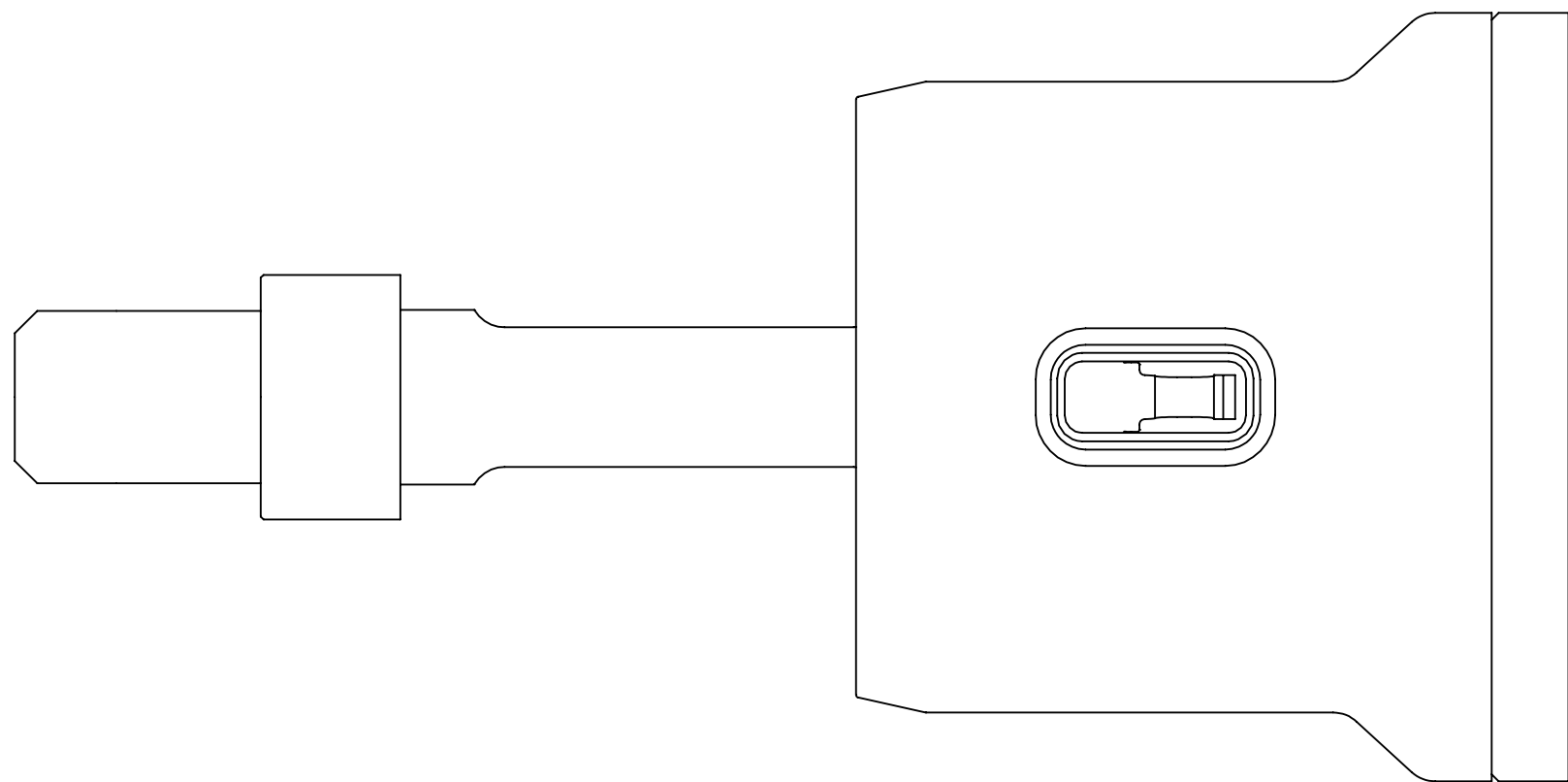
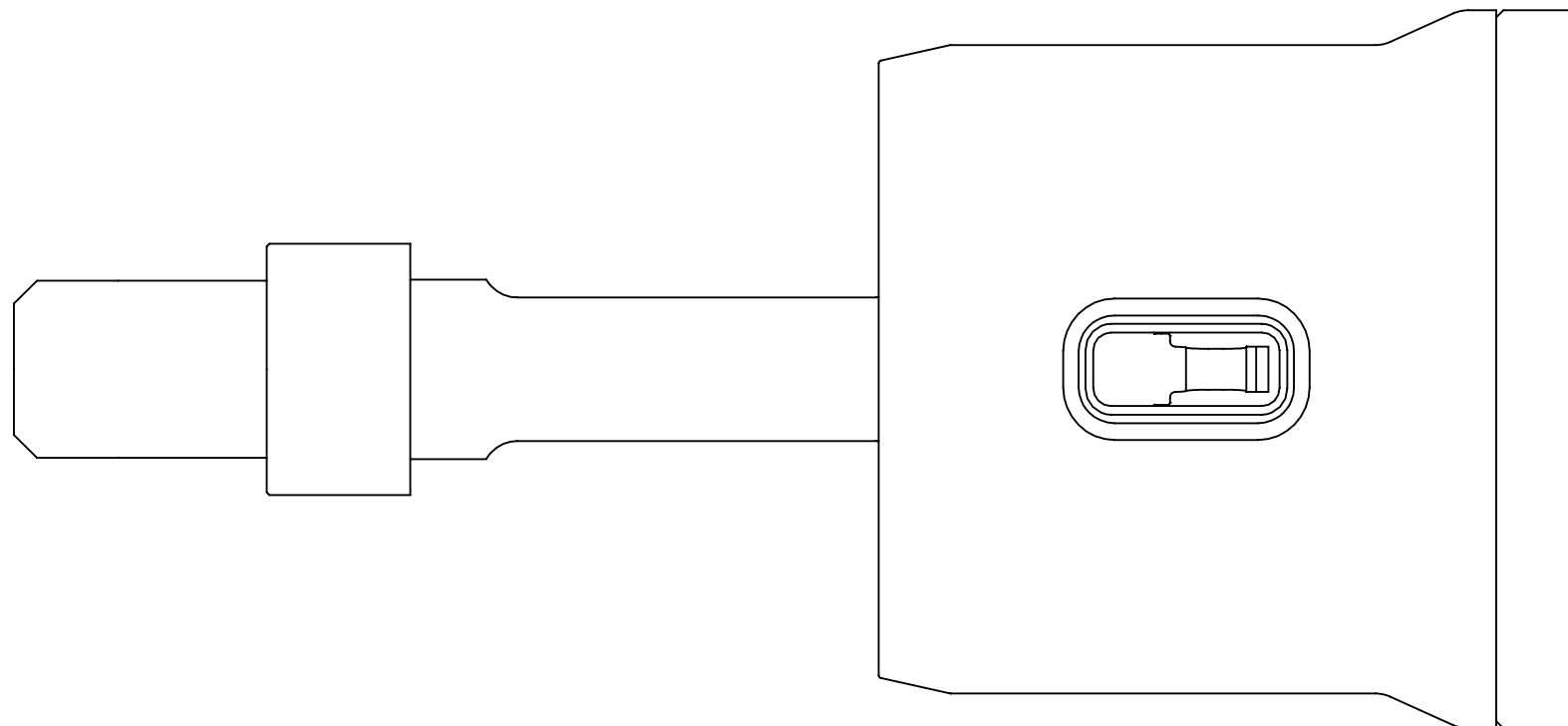
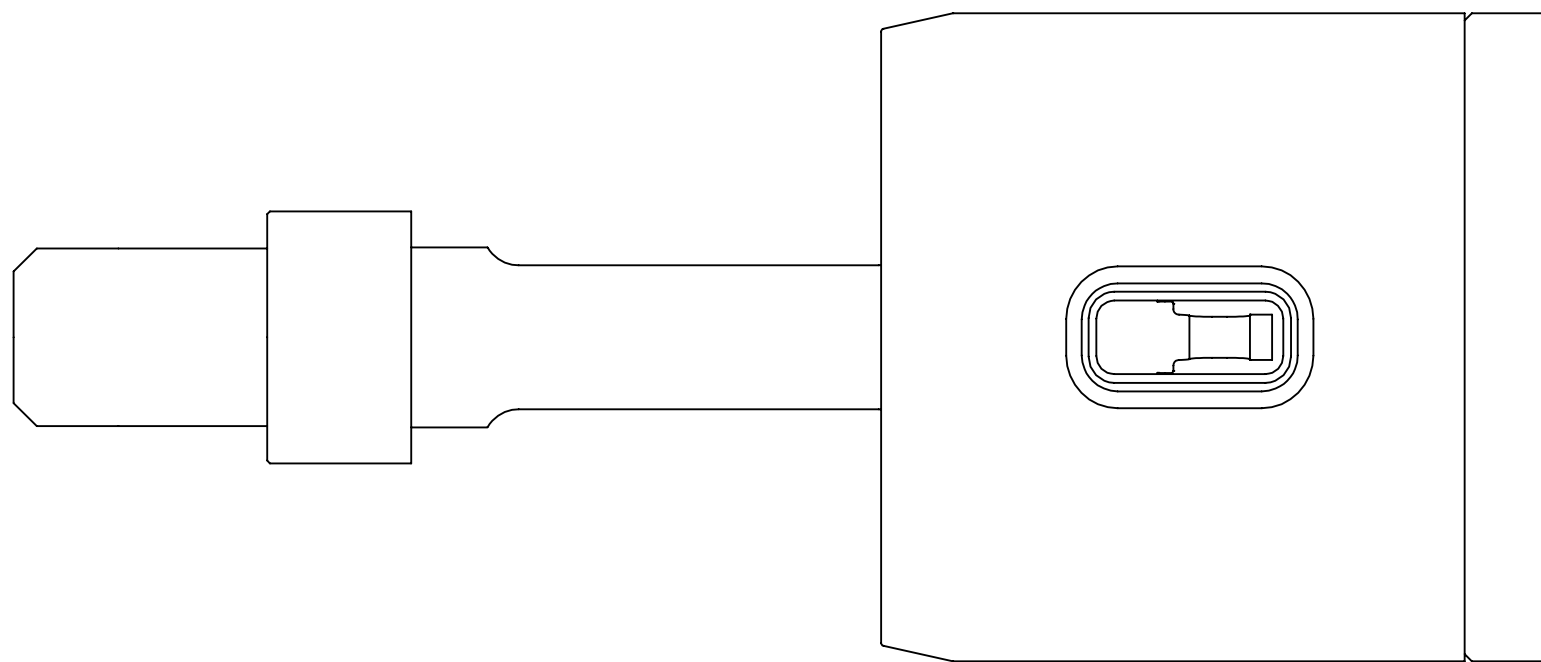
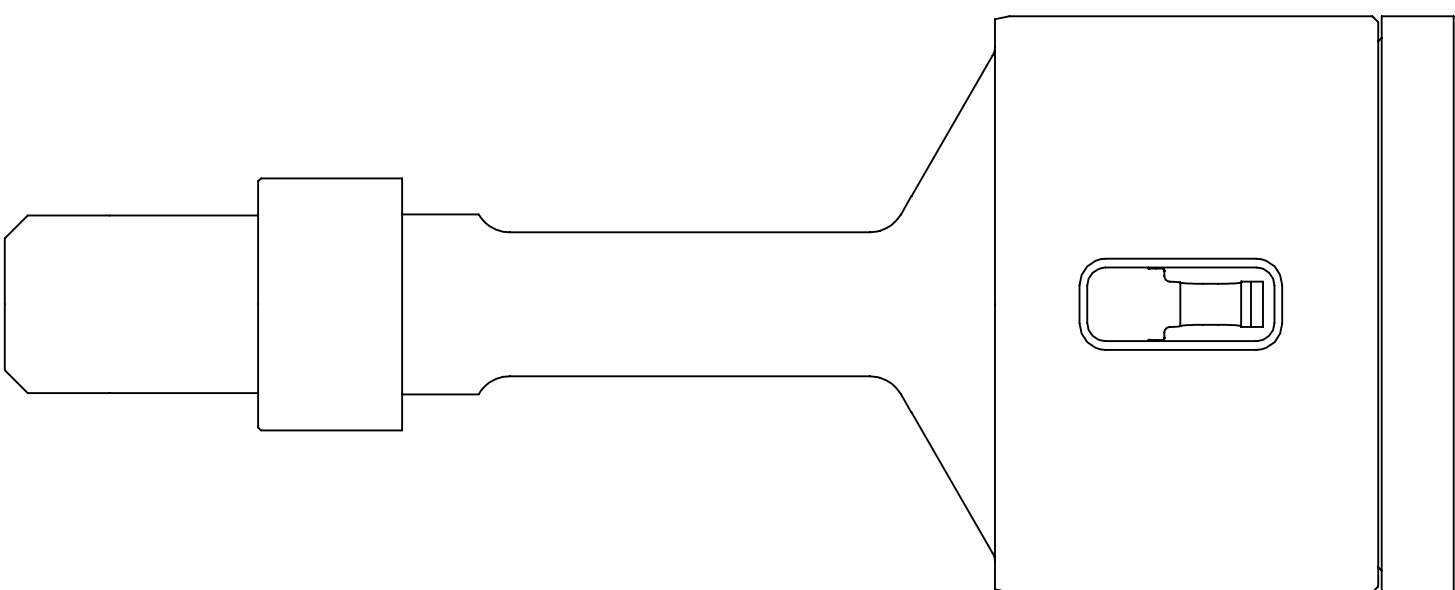
2.00" CUP WITH 2.00" PUCK

2.00" CUP WITH 2.25" PUCK

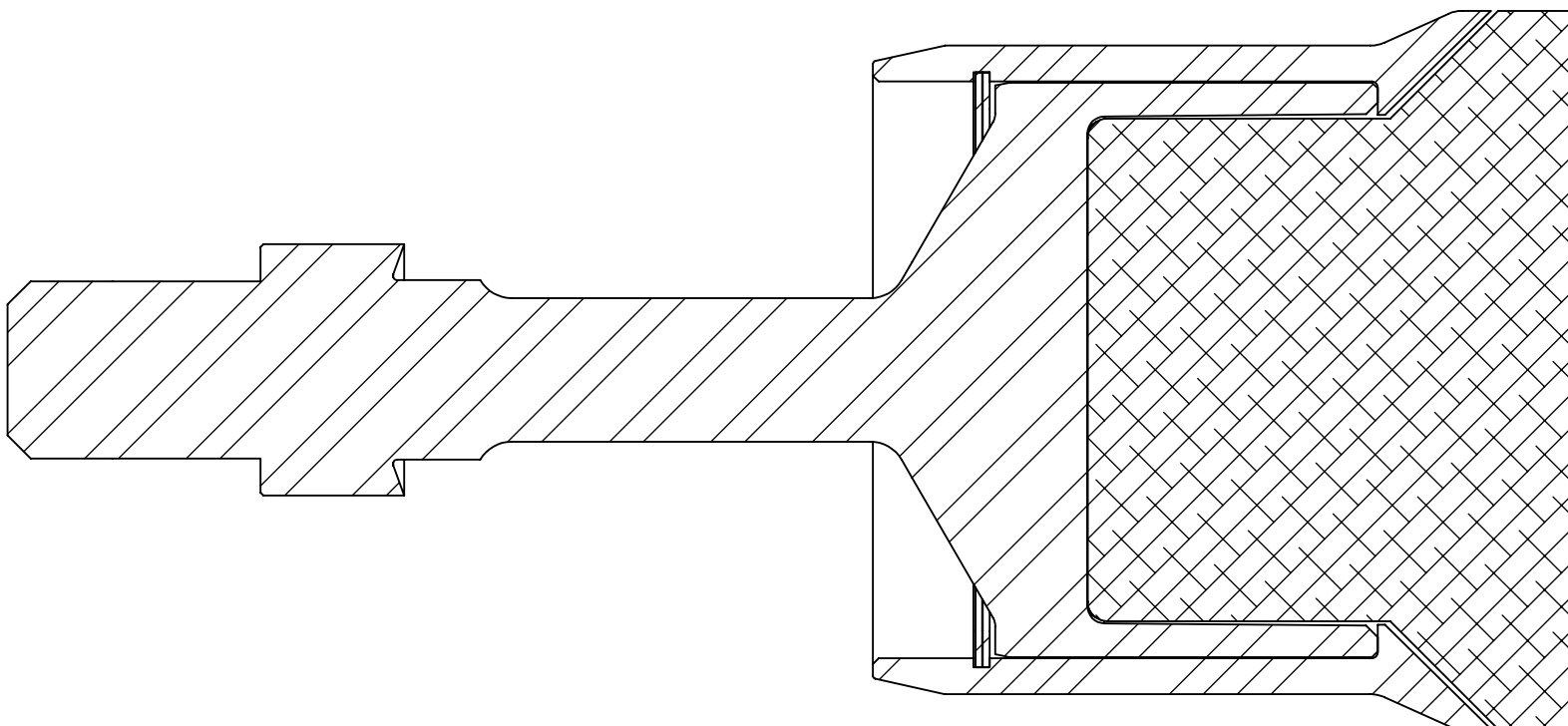
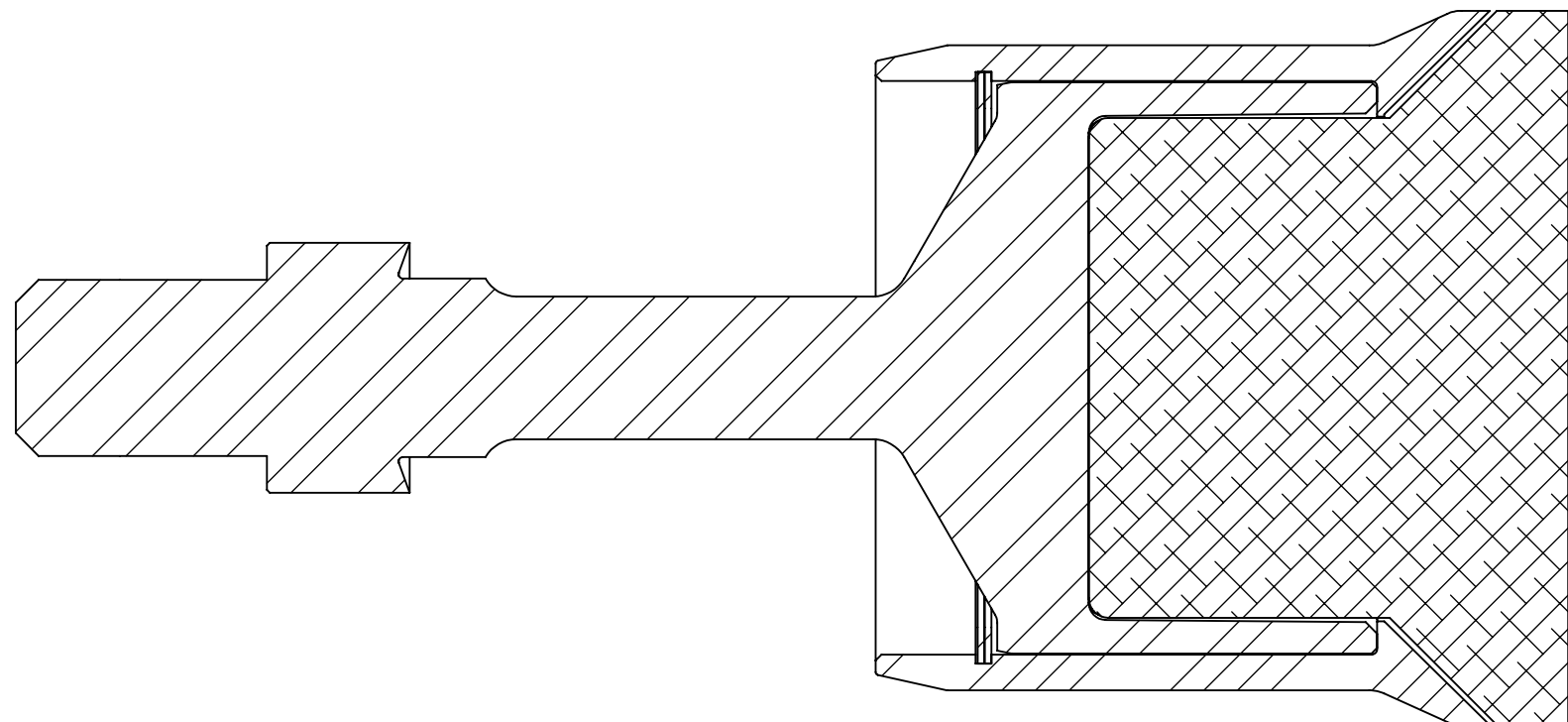
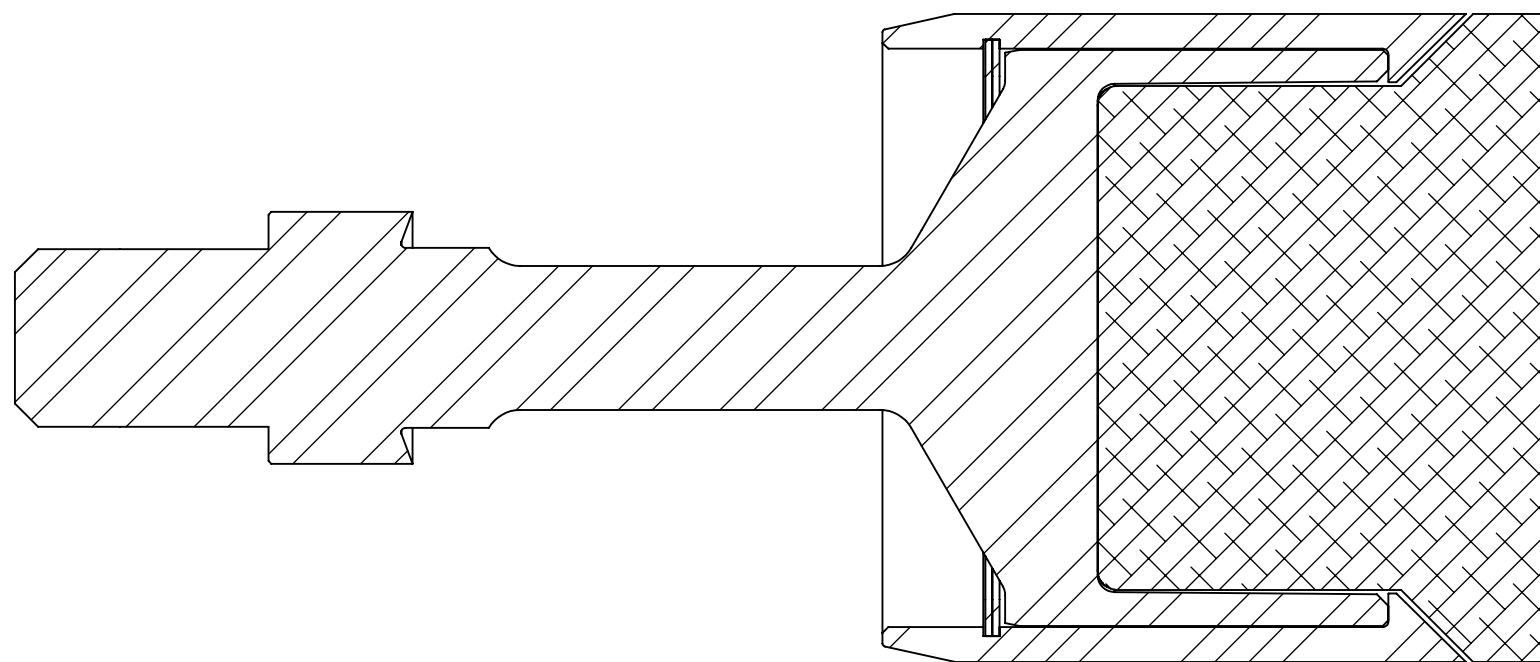
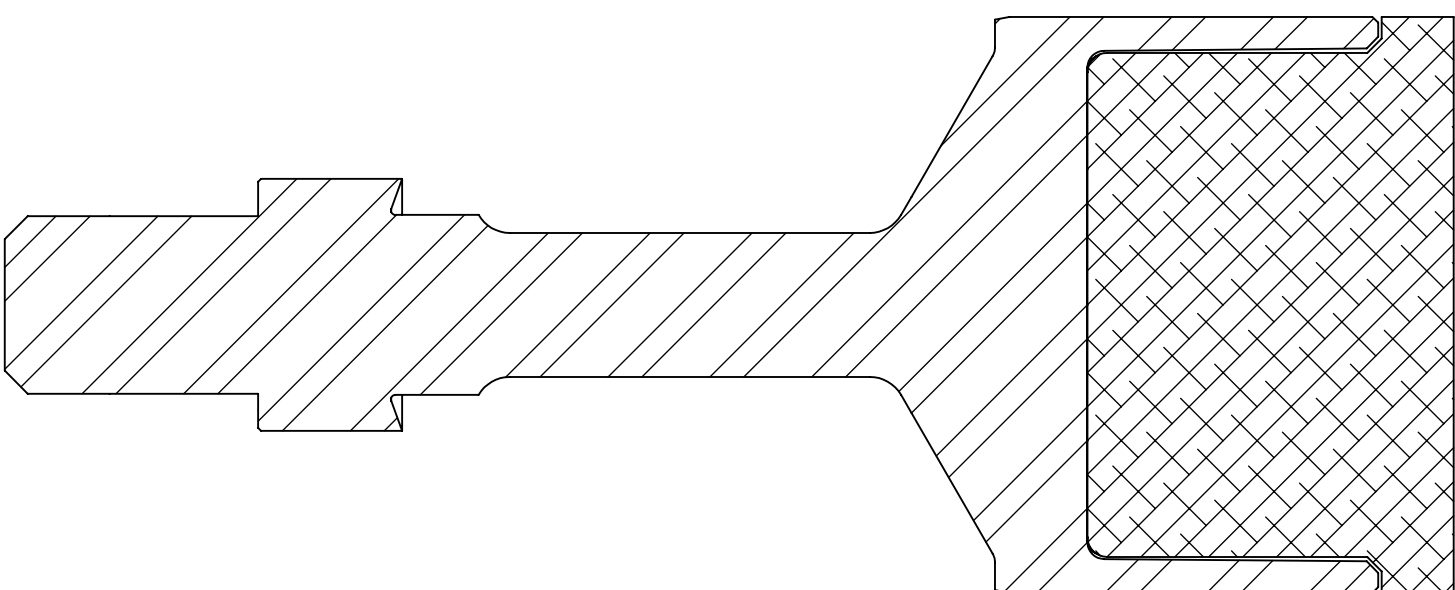
2.00" CUP WITH 2.50" PUCK

2.00" CUP WITH 2.75" PUCK

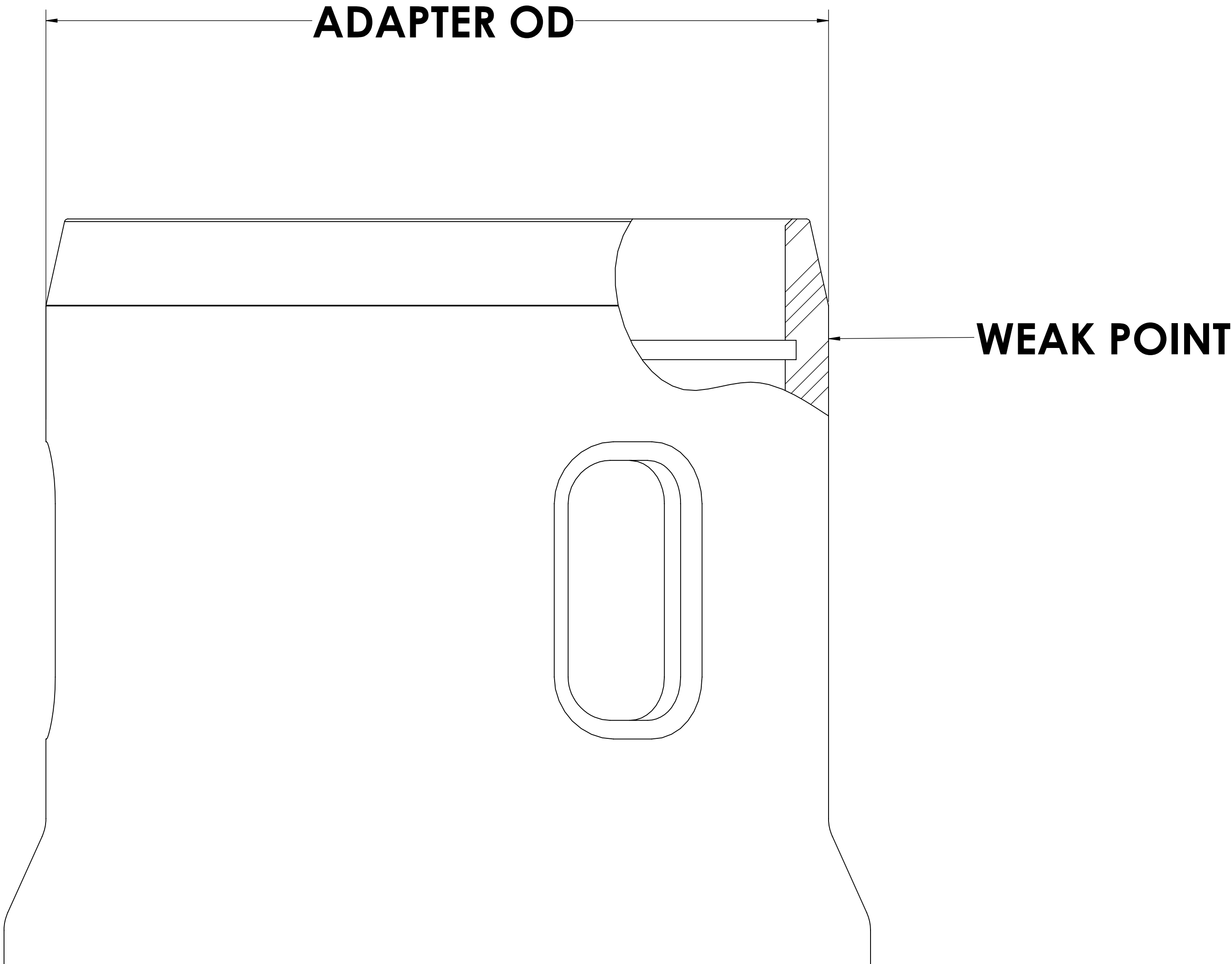
NOTE: THERE ARE MULTIPLE CUP SIZES. PLEASE SEE INSTRUCTION OVERVIEW FOR CUP, ADAPTOR, AND PUCK SELECTION



NOTE: THE COMBINATION OF 2.00" CUP AND 2.00" PUCK DOES NOT REQUIRE AN ADAPTOR



NOTE: WEAK POINT IN ADAPTER



CORE SIZE	ADAPTER OD RANGE	MAX PULL LOAD
INCHES	INCHES	SAFETY FACTOR 2X-3X
1.25"	1.75" to 2.25"	10,000 LBS
1.75"	2.25" to 2.75"	12,000 LBS
2.25"	2.75" to 3.25"	16,000 LBS
2.75"	3.25" to 3.75"	24,000 LBS
3.25"	3.75" to 4.25"	18,000 LBS
3.75"	4.25" to 4.75"	20,000 LBS
4.25"	4.75" to 5.25"	26,000 LBS
4.75"	5.25" to 5.75"	28,000 LBS
5.25"	5.75" to 6.25"	42,000 LBS
ALL OTHER SIZES CONTACT MANUFACTURER		