

ISSUE

'24

Product Guide

ADVANCED SPORTS SUPPLY

NEW for 2024

- **RELEASED!**
Advanced Family
of Products
- More NEW
EXCLUSIVE
items!
- PolyCap® still #1!



Thank you for choosing Advanced Sports Supply!

For the past few years, it has been a priority to start new relationships all while keeping our current ones alive by bringing best in class service and quality products that our customers are looking for. At Advanced Sports Supply, we take pride in getting to know our customers personally. Building and sustaining relationships will always be at the top of our list, along with supplying the top products you need, even as we continue to grow.

In 2023, we continued our fast growth while still being able to deliver great service to our customers! In 2024, we are excited to launch our “Advanced Family of Products” to the market. These are the same great products our customers are accustomed to, but now are under our exclusive ADVANCED brand!

We’d like to thank all our loyal customers and vendors that have allowed us to continue to work with them and help us grow into what we are today! We sincerely enjoy working with all of you, and we look forward to working with you and many more throughout the future.

Sincerely,



Corey Scherer – President/CEO



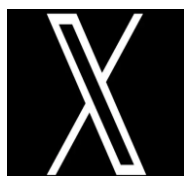
ADVANCED

FAMILY OF PRODUCTS

Follow us on



@advancedsportssupply



@advsportssupply



@advancedsportssupply

CONTENTS

Field Maintenance & Facility.....Pages 1-19

FENCE PRODUCTS	1-3
HAND TOOLS	4
DRAGS	5
FIELD MARKING	6-9
FIELD MATERIALS	10-11
WINDSCREEN	12-13
FIELD TARPS	14
WATER REMOVAL/HOSES	15
PADDING	16
NETTING	17-18
TURF	19

Baseball/Softball.....Pages 20-50

TURF MATS	20
MOUNDS	21-24
BASES	25-29
FOUL POLES	30
SCREENS	31-32
BATTING CAGES	33
TRAINING AIDS	34-38
BALLS	39-43
COACHING	44
PLAYERS	45-50

Soccer.....Pages 51-63

GOALS	51-55
NETS	56-57
CORNER FLAGS	58
SEATING/SHELTER	59-61
COACHING	62
SOCCER BALLS	63

Football.....Pages 64-79

FOOTBALLS/TEES	64-65
SHIELDS/SLEDS	66-68
FIELD EQUIPMENT	69
PROTECTIVE GEAR	70-77
FLAG FOOTBALL	78
GOAL POSTS	79

Hydration.....Pages 80-81

Basketball.....Pages 82-93

BALLS/STORAGE	82
GOALS/SYSTEMS	83-86
RIMS/BOARDS/NETS	87-92
COACHING	93

Sports Medicine.....Pages 94-95

Racquet Sports/PickleballPages 96-98

POLES	96
NETS	97
BALLS/RACQUETS	98

Volleyball.....Pages 99-100

VOLLEYBALLS	99
NETS	99
SYSTEMS	100

Apparel & Uniforms.....Pages 101-108

POLYCAP®

250' Golden Yellow - #POLYCAP250-YEL

250' Black - #POLYCAP250-BLK

100' Golden Yellow - #POLYCAP100-YEL

100' Black - #POLYCAP100-BLK

- Rounded corner profile for added strength
- Pre-slit
- 25% stronger than the competition
- 4½" heavy duty construction
- Weather, Mildew and UV treated
- 100% virgin high density polyethylene
- Recyclable when done using
- 3-year limited warranty



PolyCap®



19" FENCE CAP TIES

Yellow - #L1950YW100

Black - #L1950UV100

- Heavy duty
- Pack of 100 ties

8" TIES

100 Pack - #L850UV100

1000 Pack -

#L850UV1000

- 50 lb tensile strength



INSTALLER TOOL

#02294

- Solid Steel
- Makes install of your fence cap easy.

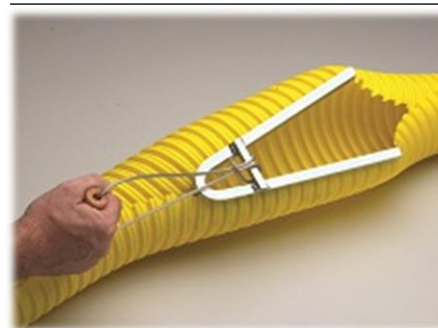


FENCE GUARD

Standard - #STDFG-COLOR

-Golden Yellow, Safety Yellow, Black, Green, Red, Orange, White, Blue

- STANDARD Measures 2 3/4"W x 4"T x 0.07" wall thickness
- Professional teardrop shaped profile
- Easy to install with just one person
- Exterior grade UV-resistant polyethylene construction
- Pre-drilled every 24" for attaching to the fence
- Sold in cartons of 84' in 7' long sections
- Cable ties Included
- 3-year limited warranty

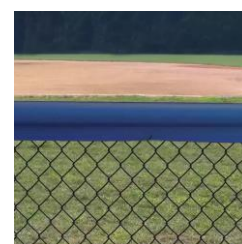
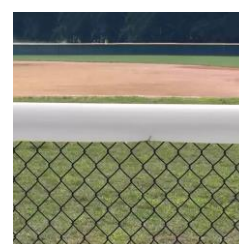
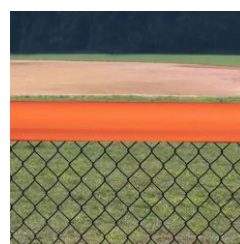
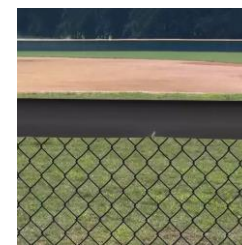
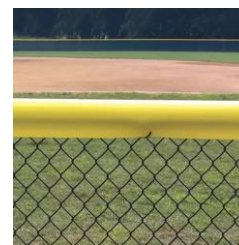
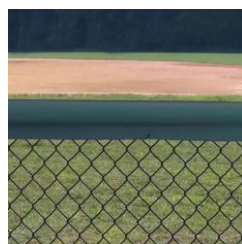


ZIPPER TOOL

#ZIPPER

- Zinc Plated with pull chord
- Makes install of your fence cap a breeze

FIELD MAINTENANCE

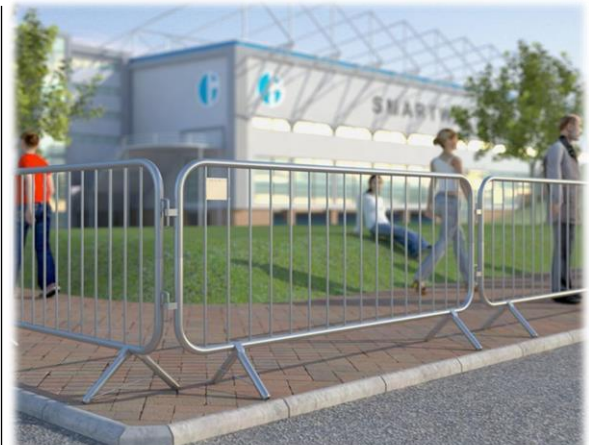




SPORT FENCE PANELS

- White Mesh w/ Yellow Top Rail - #SPI-1100**
- White Mesh w/ White Top Rail - #SPI-1000**
- Gate Fence Panel - #SPI-1300**
- Foul Ball Marker - #SPI-1200**
- Foam Connector - #SPI-1500**

- Lightweight
- Stores Compactly
- Easy to Install
- Transportable
- Weather Resistant
- Durable
- Use Indoors or Out
- Fence panel measures 42”H x 120”W x 2”T, 24 lbs
- Foul ball marker measures 144”H x 15”W x 3”T, 20 lbs



FLAT LEG CROWD CONTROL BARRIER

#01062012

- Dimensions (in): 89x43.3x1.5
- Weight (lbs): 19.2
- Finish: Pre-Galvanized

FIXED LEG CROWD CONTROL BARRIER

#01063012

- Dimensions (in): 89x43.3x20.8
- Weight (lbs): 22
- Finish: Pre-Galvanized

BARRIER STILLAGE

#09055455

- Dimensions (in): 62x57x36
- Weight (lbs): 150
- Finish: Post Galvanized



SMARTPOLE TEMPORARY FENCING

SmartPoles KIT - #HNNH-16

- 16 - 60" L Smart Poles (14 flex poles and 2 anchor poles)

Single Flex Pole - #HNNH-P

Single Anchor Pole - #WRHNNH-P

Ground Socket KIT- #EFGA-16

- 16 - 12" Ground sockets
- Punch pilot hole tool
- Socket setter
- Ground socket plugs

Single Ground Socket w/ Plug - #GS-12-W



TUFF FENCE ONLY

Dark Green - #31100

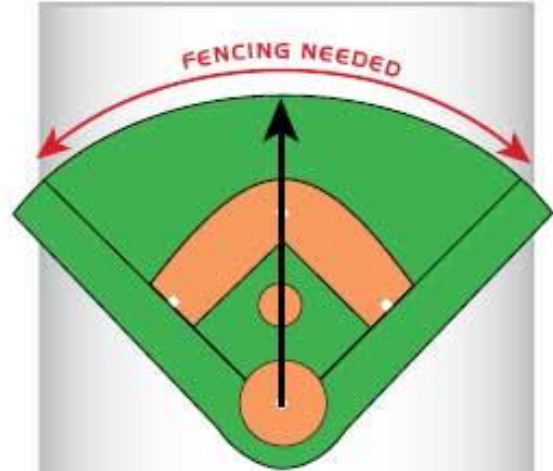
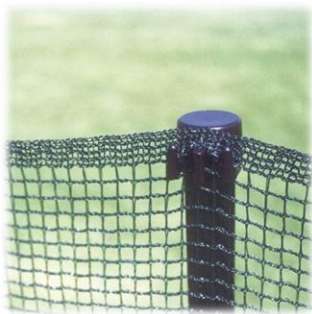
Black - #31200

Blue - #31300

Orange - #31400

Red - #31500

- 48" x 150' per roll
- Fencing material ONLY



HOW MUCH OUTFIELD FENCE DO YOU NEED?

HOME PLATE TO CENTER FIELD	FENCING NEEDED
180'	282.6'
200'	314'
225'	353.25'
250'	392.5'
275'	431.75'
300'	471'
325'	510.25'
350'	549.5'
400'	628'

HOMERUN FENCE PACKAGES

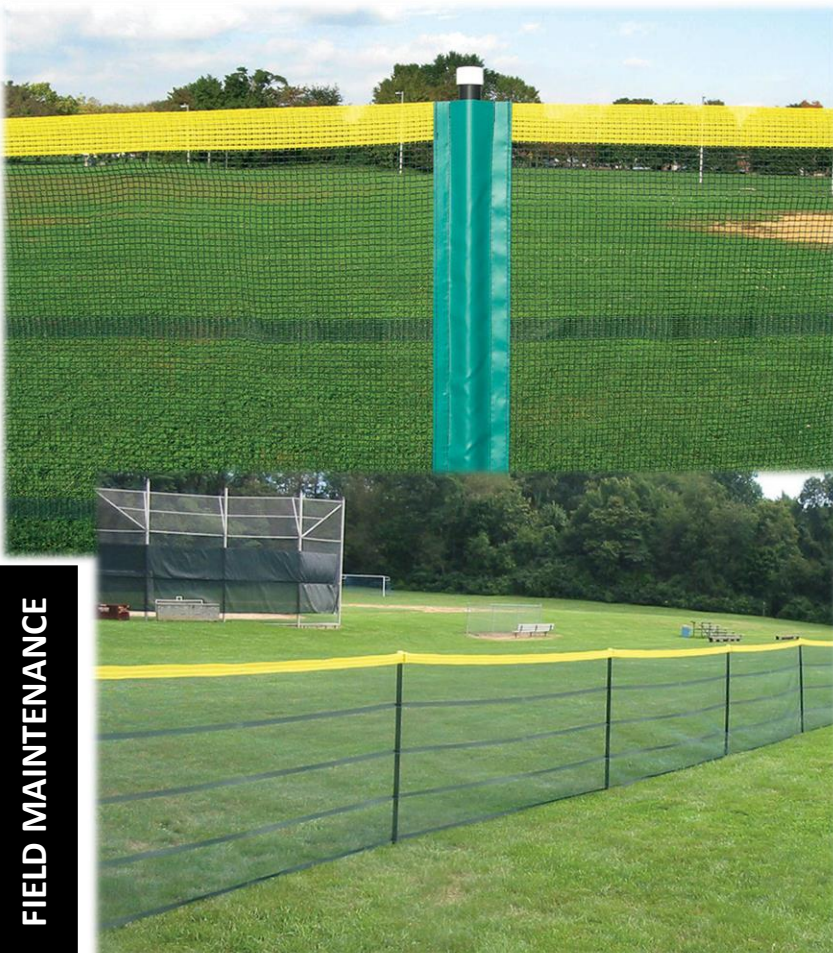
200' - #EF314GP

300' - #EF471GP

32 Ground Sockets w/ Plugs - #EFGA-32

48 Ground Sockets w/ Plugs - #EFGA-48

- Portable Home Run Kits include fencing, poles, 18" auger, and 330' measuring tape
- Available in green ONLY
- Soft poly mesh with vinyl pockets sewn in at 10' intervals
- Yellow home run marker on the top edge
- Available as individual fence sections or in Home Run Kits for 200' or 300' foul lines
- **Optional Ground Sockets** available for even quicker removal & setup
- 200' HR Kit includes 314' of fencing, pilot hole tool, 32 poles, and a 300' tape measure
- 300' HR Kit includes 471' of fencing, pilot hole tool, 48 poles, and a 300' tape measure



LANDSCAPE/FIELD RAKES

24" - #10024

36" - #10036

48" - #10048

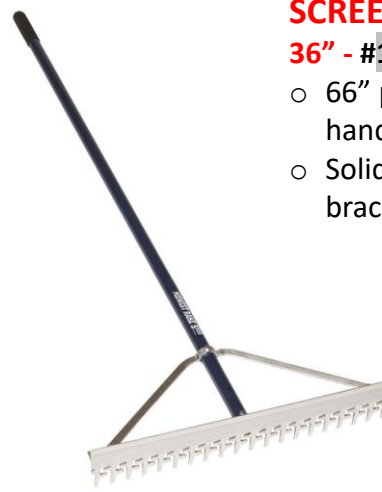
- 66" HD aluminum handle
- Has teeth on one side and a leveling blade on the other



SCREENING RAKE

36" - #11036

- 66" powder-coated aluminum handle
- Solid aluminum wrap-around bracing



DOUBLE PLAY GROOMING RAKE

36" - #12536

- 66" HD aluminum handle
- Short scarifier teeth on one side, long landscaping teeth on the other



SCARIFIER/LUTE RAKE

36" - #52936

- 66" HD aluminum handle
- Has teeth on one side and a leveling blade on the other



LOOP/TWO-WAY HOE

#40100

- 60" handle, 6" head
- Dual action head cuts with minimal surface disruption



PROFESSIONAL DRAG BROOM

84" - #83084

- Three rows of 3.5" bristles

TOOLITE SIFTING SHOVEL

#49500

- 48" fiberglass handle
- 14-gauge steel head



Other models are available! We can get what you need!



ERASER DRAG

6.5'W x 4'D - #ERASE64

6.5'W x 2'D - #ERASE62

4'W x 3'D - #ERASE43

The ERASER has a lightweight design and heavy-duty impact for your field dragging needs. Made of industrial strength rubber, the ERASER gives a pro finish! The holes in the mat allow your material to percolate through! It will not harm grass, mounds, home plates, or golf greens when coming in contact. The industrial rubber won't kink like steel drags! Easy to roll up and transport!

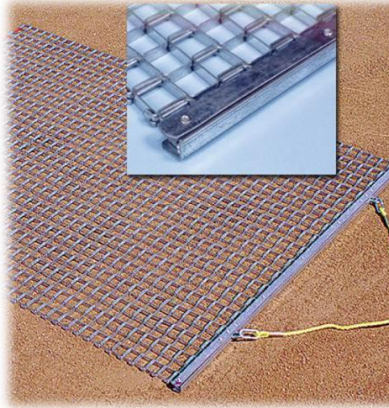
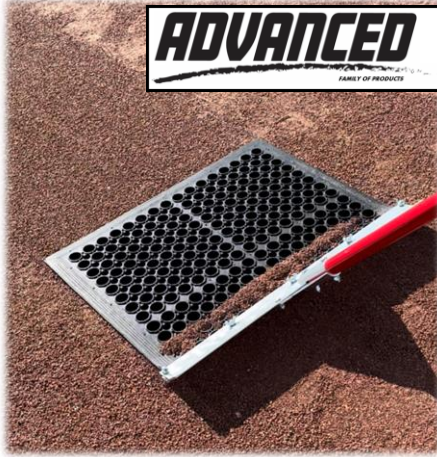
- Tow Rope INCLUDED!



ERASER MOP

#ERASEMOP

- Designed for the perfect groomed finish in small areas
- 66" long handle with aluminum head and bracing
- Lightweight design
- Mop measures 24"W x 18"L



FLEXIBLE STANDARD DUTY STEEL DRAG

3'W x 5'D - #STD3X5DRAG

6'W x 3'D - #STD6X3DRAG

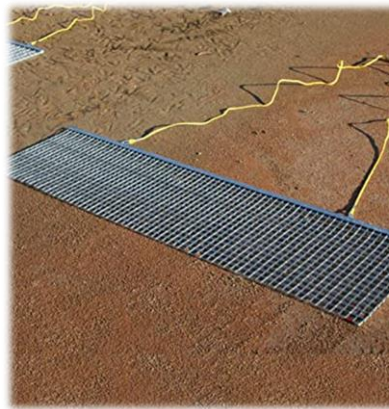
6'W x 6'D - #STD6X6DRAG

- 1" x 1" steel mesh
- Rolls up for easy storage
- Includes steel drag attachment and tow rope
- Other sizes available!

STEEL FLEX DRAG MOP

#BSFDM

- Designed for finish grooming small areas
- Powder-coated aluminum handle is 66" long with aluminum head and wrap around bracing
- Flex drag size measures 24"W x 18"L



RIGID STEEL DRAG

4'W x 18"D - #RIG4X2DRAG

6'W x 18"D - #RIG6X2DRAG

- 1" x 1" steel mesh
- Does not flex to provide enhanced leveling
- Includes steel drag attachment and tow rope
- Other sizes available!



COCOA MOP

#BCMOP24

- Excellent on mounds and tight maneuvering
- Constructed from high quality cocoa mat
- Size: 27"W x 16"L



COCOA MAT DRAG

4'W x 2'D - #205-100-020

6'W x 2'D - #205-100-030

6'W x 4'D - #205-100-050

- 1" thick natural fiber surface
- Heavy Duty rubber backing
- Includes drag bar and pull rope w/ plastic handle



ADVANCED BATTER BOX TEMPLATE

Baseball (4' x 6') - #01015

Youth Baseball (3' x 6') - #01017

Softball (3' x 7') - #01016

- HD 1" square galvanized steel with quick push pins for easy assembly
- Official Home Plate locator



ADVANCED BATTER BOX ADJUSTABLE TEMPLATE

#02500

- HD 1" square galvanized steel with quick push pins for easy assembly
- Official Home Plate locator
- Adjusts from baseball to youth baseball to softball with telescoping push pin construction



ADVANCED BATTER BOX HEAVY DUTY TEMPLATE

Baseball (4' x 6') - #01635

Youth Baseball (3' x 6') - #01634

Softball (3' x 7') - #01640

- Lightweight channel aluminum
- Clearly marks the outline for the batter's box
- Line up the easy guide handle with the side of your home plate
- Folds for easy transport

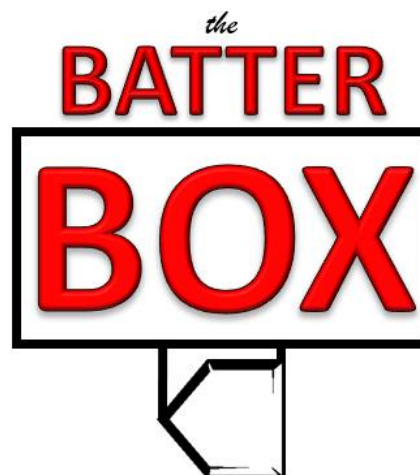


ADVANCED BATTER BOX E-Z CHALKER

Baseball (4' x 6') - #01591

COMBO Youth Baseball (3' x 6') Softball (3' x 7') - #01592

- Marks regulation batter's box in seconds
- Marks a 2" wide line
- Durable and lightweight aluminum
- Handles fold in for storage



ADVANCED STRING WINDER KITS

Caddy Style KIT - #01631K

Handheld KIT - #01651K

- 740' of nylon twine and 10" spike included

Caddy Winder - #K-100

Handheld Winder - #KW-110

740' Twine - #P3233-0023

10" Spike - #B019

01631K



01651K



ATHLETIC MARKING PAINT

White - #20-644

- Case of 12
- Other colors – yellow, blue, red, orange
- Inverted tip
- **FREE SHIPPING!** on 50+ cases



ATHLETIC MARKING MACHINE

#Z-607

- 10" Wheels
- Built-in case storage
- Universal spray tip activator



ATHLETIC WHITE 5-GAL PAIL

#5-844 - 5-gal pail

- **FREE SHIPPING!** on 18 pails (90 gal)



MARKING CHALK 50LB

#084425

- Skid quantities (60 bags)
- 100% natural, non-toxic



STREAMLINER 70LB

#240-100-190

- (4) no-flat tires
- 2" and 4" setting
- Nylon brush agitator
- Multi position flow rate control



STREAMLINER 35LB

#240-100-150

- (3) no-flat tires
- 2" and 4" setting
- Nylon brush agitator
- Multi position flow rate control

DOUBLE PLAY PAINT ATTACHMENT

#240-100-050



GRACO FIELDLAZER

Gas Powered - #S100

Battery Powered - #ES100

FieldLazer ES100 and S100 walk-behind models feature durable, lightweight construction for effortless straight lines over even the roughest terrain.



OPEN REEL TAPE MEASURE

- 50' - #A170
- 100' - #A171
- 165' - #A172
- 200' - #A173
- 300' - #A174



BIG LEAGUE BASE PLUG

#BLBP

- Tassel color may vary based on stock
- Fits 1 1/2" anchor only



CH BASE ANCHOR

#21202

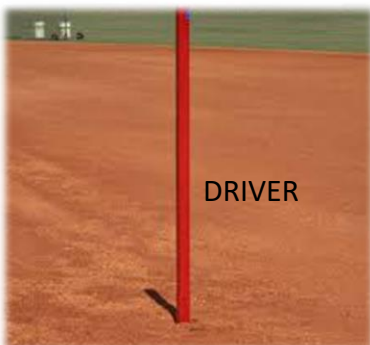
- Deluxe Heavy Duty Powder coated
- 1 1/2" Hollywood Style

#19999

- Standard Duty Galvanized
- 1 1/2" Hollywood Style

#DRIVER

- Anchor Driver
- Deluxe Heavy Duty Powder coated
- Requires no digging or concrete



RUBBER BASE PLUG

#B008

- Plug color may vary
- Fits both male and female anchors



RUBBER BASE PLUG W/ TASSEL

#B008S

- Fits both male and female anchors



CH BASE ANCHOR STARTER SYSTEMS

#19998

- (1) DRIVER, (3) 19999 Standard Anchors

#21205

- (1) DRIVER, (3) 21202 Heavy Duty Anchors

DOUBLE GROUND ANCHOR

#B003G

- Fits B042 Official size Dual Stanchion pitching rubbers and B004 Double First Base



1 1/2" FEMALE GROUND ANCHOR

#B005

- Galvanized Steel

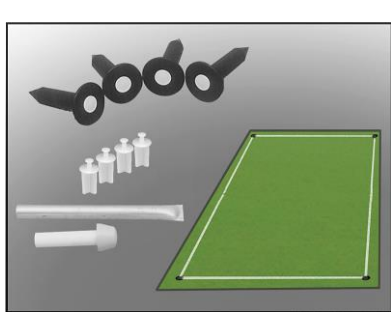


DIGOUT TOOL

#B007

- Effectively cleans dirt from ground anchors





MarkSmart™ 4 CORNER FIELD LINING SYSTEM

#CLK-4

Includes

- 4 Ground sockets with plugs
- 4 Lining Pegs
- 1 Socket Setter
- 1 Installation tool & instructions

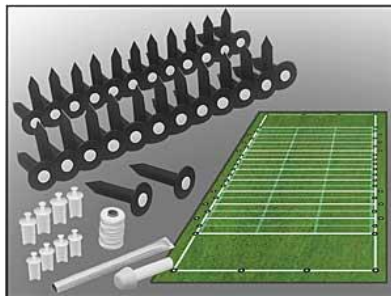
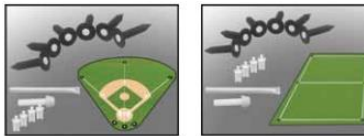


MarkSmart™ BASIC FIELD LINING SYSTEM

#BLP-6

Includes

- 6 Ground sockets with plugs
- 4 Lining pegs
- 1 Socket Setter
- 1 Roll of twine
- 1 Installation tool & instructions

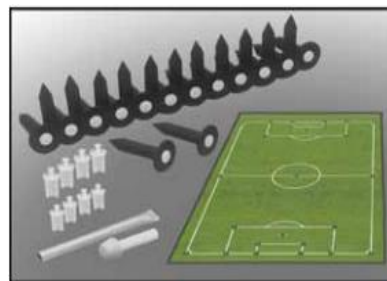


MarkSmart™ FOOTBALL FIELD MARKING SYSTEM

#FLP-50

Includes

- 50 Ground Sockets with plugs
- 8 Lining Pegs
- 1 Socket Setter
- 1 Roll of twine
- 1 Installation tool & instructions



MarkSmart™ SOCCER FIELD MARKING SYSTEM

#SLP-25

Includes

- 25 Ground Sockets with plugs
- 10 Lining Pegs
- 1 Socket Setter
- 1 Roll of twine
- 1 Installation tool & instructions



MarkSmart™ FOOTBALL EZ FOLD HASHMARK STENCIL

#EZHASH

- Edge cut notches allow for fast, easy and accurate placement.
- Unique accordion fold design compacts the guide down to 45" x 29" for easy storage and handling



MarkSmart™ EZ FOLD NUMBER SET STENCIL

#EZNUM

Includes

- 0-1-2-3-4-5 and direction arrow



OUTDOOR DRAIN COVER

Square 37" - #37-SG

Round 30" - #30-RG

Cover your hazardous iron field drains and utility boxes with NON-SKID recycled rubber covers. Designed to allow water to flow through... these covers diminish the risk of injury to players and spectators alike. Standard green 37" square and 30" Round with recessed bottom fits over the drain and stays in place. They're EASY to install and last for years and years!



ADVANCED GUMBO CLAY

50lb bags - #ADV1020

- Advanced Gumbo Clay maximizes performance and safety on batting, pitching, and catching surfaces. It is crushed and screened, and it comes out of the bag dry to allow for moisture control. Advanced Gumbo Clay is for high-level baseball and softball fields



ADVANCED PRO MOUND CLAY

50lb bags - #ADV1015-50LB

- Advanced Professional Mound Clay maximizes performance and safety on batting, pitching, and catching surfaces. It is crushed and screened, and it comes pre-moistened. Advanced Professional Mound Clay can be used at all levels of play.



ADVANCED DRY

50lb bags - #ADV1005-50LB

- Advanced Dry is a calcined clay product that absorbs moisture and reduces slick spots on the mound and around the bases. Advanced Dry is designed to be used sparingly during rain events.



ADVANCED 1000 CONDITIONER

50lb bags - #ADV1000-50LB

- ADV1000 is a calcined clay conditioner that absorbs moisture and reduces compaction on the infield. It is a blondish/red color and is screened at a 5/16 mesh.



ADVANCED 2000 CONDITIONER

50lb bags - #ADV2000-50LB

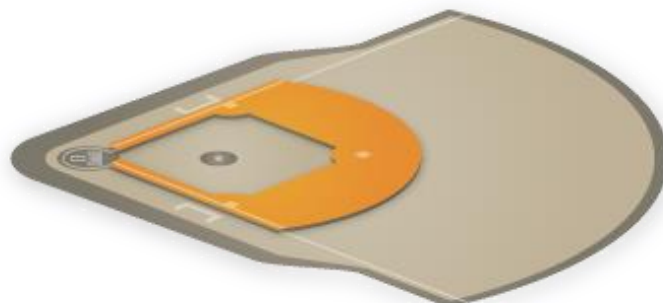
- ADV2000 is a calcined clay conditioner that absorbs moisture and reduces compaction on the infield. It is a blondish/red color and is screened at an 8/20 mesh.

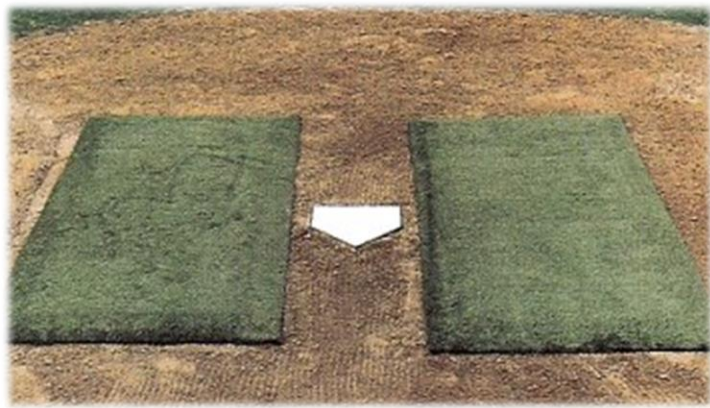
WASHINGTON BALL MIX

Sold by Truckload - #WBM



Mar-Co's Washington Ball Mix gives you the best play for the best price. It's the standard in baseball clay mixes, offering both quality and value. One of our most popular baseball infield mixes, Washington Ball Mix offers low maintenance and repair costs, optimal moisture control, professional-looking red clay, and softer footing for safety.



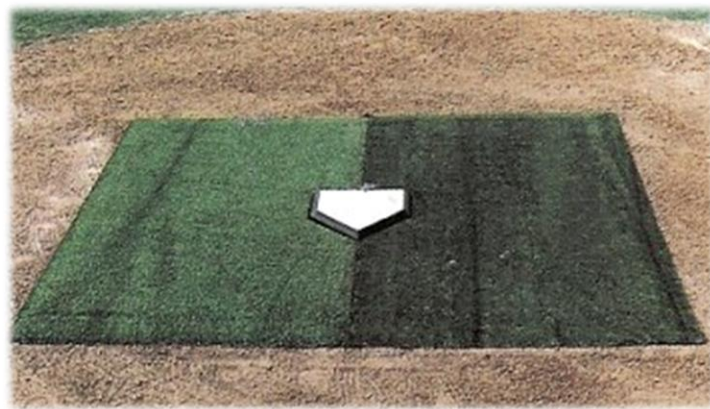


ORIGINAL JOX BOX

Set - #OJBSET

One Panel - #OJSINGLE

- Gives players a level, solid surface
- Natural feel allowing players to dig in
- Easy to install
- 3" thick
- Tapered to ensure safety when sliding
- Cover with ½" infield mix



DELUXE JOX BOX

Set - #DJBSET

Left Panel - #DJBRIGHT

Right Panel - #DJBLEFT

- Gives players a level, solid surface
- Natural feel allowing players to dig in
- Easy to install
- 3" thick
- Tapered to ensure safety when sliding
- Cover with ½" infield mix



SOFTBALL MOUND JOX BOX

#JBSB

- Gives players a level, solid surface
- Natural feel allowing players to dig in
- Easy to install
- 3" thick
- Cover with ½" infield mix

BASE JOX BOX

#JBB

- Gives players a level, solid surface
- Natural feel allowing players to dig in
- Easy to install
- 3" thick
- Tapered to ensure safety when sliding
- Cover with ½" infield mix





CUSTOM IMPRINT AVAILABLE



WINDSCREEN

- Construction: 1,000 denier x 800 denier Vipol® Matrix Mesh (18 x 14 ends/inch).
- Fabric Weight: 10oz./sq. yd. Shading: 78% Shading.
- Tensile Strength: 360 x 320 lbs.
- Sewn Hems: Three-Ply hem with ends and corners sewn and finished with two rows of lock stitched thread.
- Thread: High heat bonded polyester with UV inhibitors built into yarn.
- Grommets: #2 brass Grommets every 12".
- Seams: 6' Screens are a solid panel with no horizontal seams. 9' Screens are two panels prayer seamed together with a reinforced weld and one row of black UV treated thread at the center of the screen. They include grommets every 12".

WHITE	BLACK	BROWN	BURNT ORANGE	ORANGE	VEGAS GOLD	GOLD	BEIGE	YELLOW
GREY	FOREST GREEN	MIDNIGHT GREEN	KELLY GREEN	AQUA	CC SKY BLUE	ROYAL BLUE	PRO BLUE	NAVY
PURPLE	RED	SCARLET	MAROON	DARK SPORTS GREY				



- 8" REPLACEMENT TIES**
- 100 Pack - #L850UV100**
 - 1000 Pack - #L850UV1000**
 - 50 lb tensile strength
 - 8" long



VINYL WINDSCREEN

- Construction: 1,000 denier x 1,300 denier (18 x 17 ends/inch).
- Fabric Weight: 18oz./sq. yd.
- Shading: 100% Shading.
- Cold Crack: Minus 40 degrees F°.
- Sewn Hems: Three-Ply hem with ends and corners sewn and finished with two rows of lock stitched thread.
- Thread: High heat bonded polyester with UV inhibitors built into yarn.
- Grommets: #2 brass Grommets every 12".
- Seams: 6' Screens are a solid panel with no horizontal seams. 9' Screens are two panels prayer seamed together with a reinforced weld and one row of black UV treated thread at the center of the screen. They include grommets every 12".



VCP WINDSCREEN

- Construction: 1,000 denier x 1,000 denier vinyl coated polyester mesh (9 x 12 ends/inch).
- Fabric Weight: 8oz./sq. yd.
- Shading: 70% Shading.
- Sewn Hems: Three-Ply hem with ends and corners sewn and finished with two rows of lock stitched thread.
- Thread: High heat bonded polyester with UV inhibitors built into yarn.
- Grommets: #2 brass Grommets every 12".
- Seams: 6' Screens are a solid panel with no horizontal seams. 9' Screens are two panels prayer seamed together with a reinforced weld and one row of black UV treated thread at the center of the screen. They include grommets every 12".



BALLASTED WINDSCREEN

As winds exceed 20 mph, units billow to allow potentially damaging high wind velocities to blow through, helping to PROTECT FENCE and WINDSCREEN

- Vipol® Matrix Mesh Fabric
- Construction: 1,000 denier x 800 denier (18 x 14 ends/inch). 10oz./sq. yd.
- 78% Shading
- Tensile Strength: 360 x 320 lbs.





WIND WEIGHTED®TARPS

- 10' Diameter - #WWV1810**
- 12' Diameter - #WWV1812**
- 18' Diameter - #WWV1818**
- 20' Diameter - #WWV1820**
- 26' Diameter - #WWV1826**
- 30' Diameter - #WWV1830**
- Set of (3) 10' Diameter - #WWV1810SET3**

- Vinyl Covering: 18oz./sq. yd. fully COATED vinyl on base fabric scrim of 1,000 denier x 1,300 denier polyester. Fabric meets following tests: Tear Strength Tests: Warp 100 lbs., Fill 100 lbs., Grab Tensile Strength: Warp 410 lbs., Fill 410 lbs., Weft Insertion: 18 x 17. Vinyl compounded with UV inhibitors and mold inhibitors. Cold Crack: minus 40 degrees F°.
- Perimeter Pocket Weight: 1/4" Hot Dipped Galvanized Grade 30 Proof Coil Chain. Material Diameter is 0.276". Working Load Limits 1,300 lbs. Proof Load Test 2,600 lbs. Minimum Breaking Load 5,200 lbs. Inside Length 1.24" Inside Width 0.38" Weight Per Foot 0.63 lbs.



NON-WEIGHTED TARPS

- 6oz**
- 10' Diameter - #NW610-SW**
- 12' Diameter - #NW612-SW**
- 18' Diameter - #NW618-SW**
- 20' Diameter - #NW620-SW**
- 26' Diameter - #NW626-SW**
- 30' Diameter - #NW630-SW**

- **Color: White/Silver Only**

NON-WEIGHTED TARPS – 18oz

- 10' Diameter - #NWV1810**
- 12' Diameter - #NWV1812**
- 18' Diameter - #NWV1818**
- 20' Diameter - #NWV1820**
- 26' Diameter - #NWV1826**
- 30' Diameter - #NWV1830**
- Set of 3 10' Diameter - #NWV1810SET3**



- Made of durable 18 oz. vinyl-polyester or 6 oz. polyethylene, these quality tarps have grommets installed every 3' around perimeter and include low profile ground stakes. Both models covered by a 2-year prorated warranty against UV sunlight breakdown. This is baseball's most widely used type of cover.



J STAKES
#JS15
 ○ Pack of 15

ADVANCED TARP ROLLER
10' - #TROLLER10
20' - #TROLLER20
 ○ 24" Diameter
COUPLER - #TCOUPLER



PUDDLE SPONGE

#245-100-030

- Built to last through several seasons of use
- Keeps the integrity of your infield soil intact, no unnecessary displacement of infield material
- Includes handy quick-dry hanger loop for easy drying
- Hydrophilic foam and filter design
- Excellent for ballfields, athletic courts or playgrounds
- Sold in cases of (3)



Big Gulp™ WATER REMOVAL PUMP

#245-950-100

- Smooth, durable pumping action with a 35oz pump stroke and a 6' ejection hose.
- MudGuard Filter helps reduce gritty soil from damaging the pump.
- Easily disassembles for cleaning



ADVANCED STADIUM HOSE – 1" CLEAR

50' - #ASH50

100' - #ASH100

- Flexible reinforced with spiral synthetic yarn for extra strength
- Thick outer wall
- Smooth finish is abrasion, weather and crack resistant
- Nonconductive
- Machined brass couplings
- 150 PSI working pressure
- 450 PSI max burst pressure

MAGNUM™ 3/4" NOZZLE

#NG450

1" ADAPTER - #A-BA107FM

- Flow: 37 GPM at 80 psi



MAGNUM UltraMAX™

1" - #NG600-SFH-10

3/4" - #NG600-SFH-75

- Full throttle 15-40 GPM (57-151 L/min)



ABSORBENT ROLLER SQUEEGEE

36" - #72036

- 60" handle

REPLACEMENT ROLLER 36"

#SA10051



FIELD CADDIE HEAVY DUTY HOSE CART

- Holds Over 100 Feet of 1" Hose or 125 Feet of 3/4" Hose
- Heavy Duty Hand Truck Frame Easily Maneuvers Hose On and Off the Field
- Solid Rubber Wheels Never Go Flat

3/4" Hose Reel - #HC-HT-075

- 3/4" x 10 ft leader hose included

1" Hose Reel - #HC-HT-100

- 1" x 10 ft leader hose included

Optional Toolbox - #HC-TRL-TOOL



OUTDOOR PADDING

- Choose from models to fit any specific installation:
- Foams: Polyurethane or Cross-link Polyethylene
- Choice of outdoor plywood backing thickness: 1/2" or 3/4"
- Foam thicknesses from 1" to 4"
- Attachments to fit onto walls, chain link fences, or concrete.
- Z-Channel attachments for wood or concrete walls.
- Washer attachments for chain link fences.
- Sizes: Standard and Customized
- Padding is covered with 18 oz. vinyl in choice of 17 colors.
- Digital Imprinting available

INDOOR PADDING

- Standard Sizes: 2' x 5', 6' or 7' Optional Cutouts for switches/outlets. 16 colors can be mixed or alternated for dramatic effect. Order aluminum channeling separately.
- Quality pads are constructed of 18 oz. fire rated (FR) Vinyl Covering, either 1 3/8" thick Crosslink Polyethylene Foam OR 2" HD Urethane Foam, and 7/16" thick OSB board backing.
- 1" lip at top and bottom for attachment to wall, easily attach to wall with bolts OR aluminum channeling.
- Digital Imprinting available



SQUARE RAIL PADDING

- Backing: 3/4" B/C Exterior Grade Plywood
- Vinyl Covering: 18oz./sq. yd. fully COATED vinyl
- Filler Foam: 1 3/8" thick cross-link polyethylene foam.
- Attachment: 1/8" x 1 1/2" x 6" Aluminum Flat Bar, 2" x 2" zinc plated "L" bracket, 2" zinc plated EMT strap, #10 x 1 zinc plated hex screw and 1/4" zinc plated washer

RAIL PADDING

- Vinyl Covering: 18oz./sq. yd. fully COATED vinyl on base fabric scrim of 1,000 denier x 1,300 denier polyester.
- Filler Foam: 1" thick polyurethane high impact foam.
- Attachment: #2 brass grommets every 8".



PORTABLE BACKSTOP SYSTEM

15' H x 60' L - #7E201

- All-surface friendly
- Aluminum construction
- Secure anchoring system
- Ground bars to prevent balls from rolling under net

Includes

- 1 ¾" mesh net (3B4901)
- 4 upright poles, 3 ground bars
- 16 Heavy Duty Anchor Bags (10B7011)
- Net Clips



20' MULTI-SPORT BASKSTOP SYSTEM

20' H x 80' L - #7E501

- Stainless steel cable tensioning system
- Hoist system for easy net handling
- Aluminum construction
- HTPP, 1 3/4" mesh net
- Professional, powder-coated finish

Includes

- Five 4" round aluminum support poles
- 5 ground sleeves with caps
- Net (3E501)



20' SOCCER BASKSTOP SYSTEM

20' H x 65' L - #7B101

- Hoist system for easy net handling
- Professional, powder-coated finish
- Four, 4" round support poles
- Durable, aluminum construction
- 4" mesh net (sized to ensure soccer balls cannot slip through)

Includes

- Four 4" round aluminum support poles
- 4 ground sleeves with caps
- Net (3B2866)



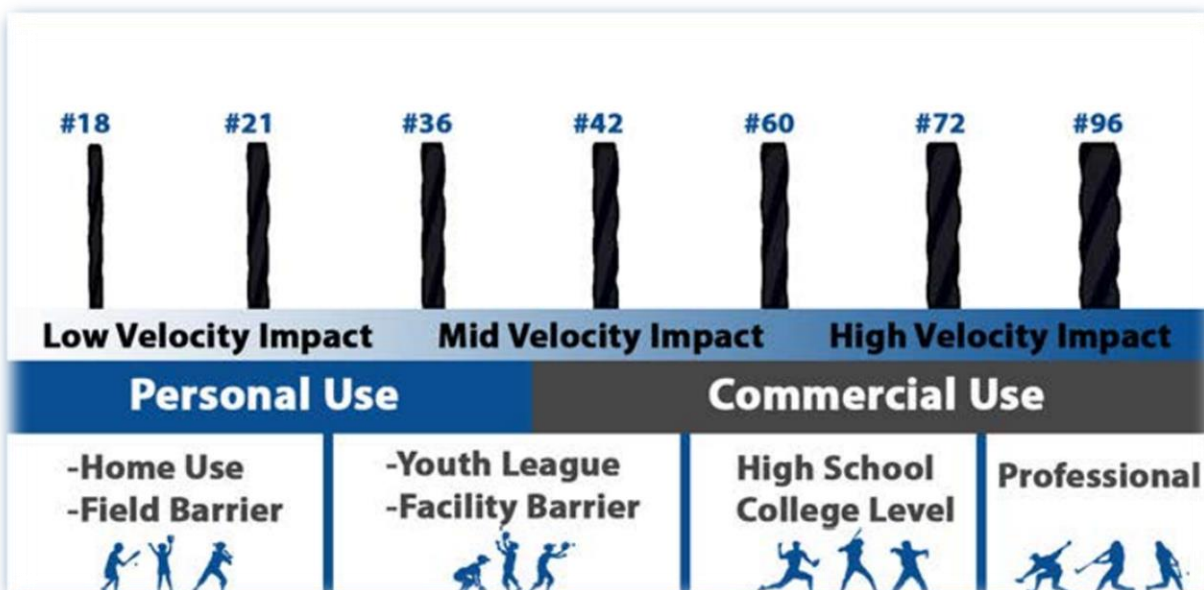
Other models are available!
We can get what you need!



CUSTOM BARRIER NETTING

- Dipped and Treated for UV protection and Increased Abrasion Strength
- Thick Rope Border for Easy Installation
- High-Grade Nylon Material versus low-end Poly Netting
- Fastest Turnaround Times in the Industry
- Woven rope border or sewn rope border available
- GOLF and SOCCER mesh available

- ✓ **ANY SIZE**
- ✓ **ANY FIELD**
- ✓ **ANY PROJECT**
- ✓ **INDOOR OR OUTDOOR**



#PL705



- One of our most popular and versatile surfaces.
- No infill needed, making it ideal for indoor and portable applications.
- This product can be installed indoors or outdoors on concrete or a compacted aggregate base

#T40



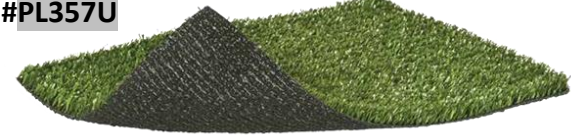
- GameChanger T40 is a multi-sport field product that should be installed over a compacted aggregate base. It was designed to capitalize on the well-known existing benefits of a monofilament and slit film blend while adding an infill trapping texturized thatch. The shorter pile and thatch layer are perfectly suited for newer style alternative infill solutions.
- Ideal for Football & Soccer

#T52



- GameChanger T52 is a multi-sport field product that should be installed over a compacted aggregate base. It was designed to capitalize on the well-known existing benefits of a monofilament and slit film blend while adding an infill trapping texturized thatch. The shorter pile and thatch layer are perfectly suited for newer style alternative infill solutions.
- Ideal for Football & Soccer

#PL357U



- Urethane
- This is an excellent batting cage product. This product is available in 15 ft. widths and is ideal for batting cage use.

#PL357



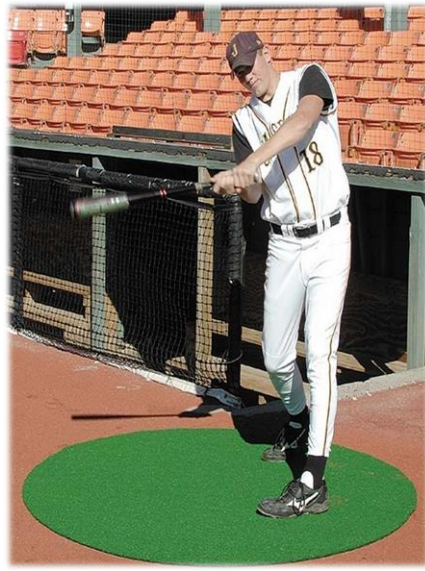
- 3mm Pad, or 5mm Pad
- This is an excellent batting cage product. This product is available in 15 ft. widths and is ideal for batting cage use.

#3C-46Q



- This is a field product. This product should be installed outdoors on a compacted aggregate base. The GameChanger series is the world's first tufted fabric utilizing 3 ends per needle. The 3C "Triple Coverage" system allows for more face yarn to show off its beautiful colors. This 14,000 denier system will keep your field looking newer, longer with over 50% more yarn denier above the rubber infill.
- Ideal for Football, Soccer, and Lacrosse





ON DECK TURF CIRCLES

- 4' GREEN - #ODC4
- 4' COLOR - #ODC4-COLOR?
- 5' GREEN - #ODC5
- 5' COLOR - #ODC5-COLOR?
- 6' GREEN - #ODC6
- 6' COLOR - #ODC6-COLOR?

- Sold in PAIRS
- Turf with 5mm padding
- Colors available: Clay, White, Blue, Orange, Yellow, Red, Black, Purple, Crimson, Maroon, Brown, Navy



STANCE TURF MATS

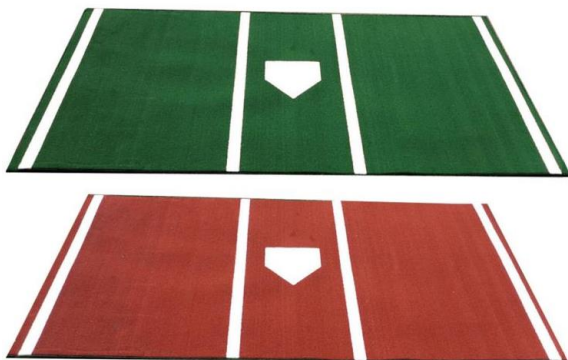
- 3' X 7' - #TMAT3X7
- 4' X 6' - #TMAT4X6
- 6' X 12' - #TMAT6X12

- Turf with 5mm padding
- GREEN ONLY

6' X 12' BATTER'S BOX TURF MAT W/ INSERTED HOME PLATE

- GREEN - #AT5034
- CLAY - #AT5034C

- Turf with 5mm padding
- Tufted lines
- Inserted turf home plate
- Colors available: Green & Clay



BATTER'S BOX TURF MAT W/ THROW DOWN HOME PLATE

- 12' x 7' GREEN - #AT5007
- 12' x 7' CLAY - #AT5007C
- 12' x 6' GREEN - #AT5002
- 12' x 6' CLAY - #AT5002C

- Turf with 5mm padding
- Tufted lines
- Throw down home plate included



WAFFLE BOTTOM THROW DOWN HOME PLATE

#B033

- All-white waffle bottom rubber plate with beveled edges
- 1/2" thickness



ULTIMATE PITCHER'S & CATCHER'S PLATE

#TA2043A

- Expands the zone to 22" instead of 17"
- Sets up soft toss target
- Includes instructions to stake down (stakes not included).
- Scuff- and stain-resistant.
- Stress-cracking resistant, with its rubber design, high-gloss finish.
- Weighs under 2 lb.





ProMounds Professional Two-Piece Mound

GREEN - #MP2031

CLAY - #MP2031C

- Two-piece mound so you can offset the landing area up to 2' creating a 6' wide landing area
- Pitching mound is lightweight with high strength construction
- Indoor or Outdoor
- Designed with an interlocking system for added stability
- Non-slip bottom
- Artificial turf is spike resistant
- Pitching Mound total size is 4'W x 9'L x 10"H

ProMounds ProModel Pitching Mound

GREEN - #MP2004

CLAY - #MP2004C

- Pitching mound has a skid proof bottom that will not scratch gym floors
- 5' wide pitching mound to simulate real pitching mound
- Constructed of high-density foam and PRAT technology
- One handle on the side of the mound
- Comes with a mound caddy for easier transportation
- Dimensions: 9' x 5' x 10"
- Weight: 140 lbs



ProMounds Collegiate Practice Mound

GREEN - #MP2001

CLAY - #MP2001C

- Pitching mound has a skid proof bottom that will not scratch gym floors
- 4' wide pitching mound to simulate real pitching mound
- Constructed of high-density foam and PRAT technology
 - One handle on the side of the mound
 - Comes with a mound caddy for easier transportation
 - Dimensions: 9' x 4' x 10"
 - Weight: 126 lbs

ProMounds Junior Practice Pitching Mound

CLAY - #MP2040C

- Made of high-density foam and rubberized armor
- Designed with Promounds innovative skid-proof bottom; will not damage gym floors
- Combination of the foam core and the rubber armor allows the pitching mound to be both lightweight and strong
- Spike-resistant turf
- Dimensions: 6'4"L x 2'6"W x 6"H
- Weight: 54 lbs



Jennie Finch Softball Pitching Mat w/ Powerline

FOAM BACKING - #MP2038

#MP2036

- 3' x 10' Pitching mat
- Foam backing for artificial turf on MP2038
- Non-slip backing prevents sliding on gym floor





ProMounds Major League Mound

GREEN - #MP3003G

CLAY - #MP3003C

- Throw from the rubber and land on the mound
- Official size rubber
- Constructed from high density foam, PRAT (ProMounds Rubber Armor Technology) and spike resistant artificial turf
- Can be used indoors or outdoors, for practices or games
- Official Little League mound specifications
- Dimensions: 6”H x 5’W x 8’3”L
- Weight: 70 lbs

ProMounds Minor League Mound

GREEN - #MP3002G

CLAY - #MP3002C

- Throw from the rubber and land on the dirt
- Official size rubber
- Constructed from high density foam, PRAT and spike resistant artificial turf
- Can be used indoors or outdoors, for practices or games
- Official Little League mound specifications
- Dimensions: 6”H x 5’W x 6”L
- Weight: 55 lbs.



ProMounds 5070 Youth Pitching Mound

GREEN - #MP5070G

CLAY - #MP5070C

- Durability built in using our patented ProMounds Rubber Armor Technology
- Converts your softball field into a Little League field instantly
- Indoor or outdoor use
- Official Little League pitching mound height specs
- This style pitcher’s mound is available in Green and Clay color turf
- Dimensions: 4’4”L x 3’8”W x 6”H
- Weight: 36 lbs

ProMounds Pitcher’s Training Mound

GREEN - #MP3001G

CLAY - #MP3001C

- Throw from the rubber and land on the dirt
- Official size rubber
- Constructed from high density foam, PRAT and spike resistant artificial turf
- Can be used indoors or outdoors, for practices or games
- Dimensions: 4”H x 3’W x 3’L
- Weight: 21 lbs

ADVANCED SPORTS SUPPLY



Green



Copper



Tan



Terracotta



Green



Copper



Tan



Terracotta

TRUE PITCH GAME MOUND 318-G

#TPM-318-G

The True Pitch 318-G is a full regulation 18' fiberglass pitching mound. It can be ordered with or without AstroTurf. The 318-G mound meets all NCAA requirements. The mound features four individual interlocking sections which make assembly and portability easy. Three or four athletes is all it takes to carry the sections. Plus, they fit easily on a small maintenance trailer.

TRUE PITCH GAME MOUND 600-G

#TPM-600-G

The 600-G is approved for Senior League Division games, as well as for Babe Ruth League games. Dimensions: 10" high, 10' wide, 12'6" long, 340 lbs.



Green



Copper



Tan



Terracotta



Green



Copper



Tan



Terracotta

TRUE PITCH GAME MOUND 202-8

#TPM-202-8

The 202-8 is approved for official Pony League Games and meets Pony League specifications for ages 12-15. Dimensions: 8" High, 108' Wide, 132' Long, 220 lbs.

TRUE PITCH GAME MOUND 202-6

#TPM-202-6

The 202-6 is approved for Official Bronco League games. The 202-6 meets Pony League and Dixie Youth Baseball specifications. Dimensions: 6" Height, 96" Wide, 120" Long, 200 lbs.



Portolite



Green



Red



Purple



Green



Red



Tan



Clay

PORTOLITE TWO-PIECE GAME MOUNDS

10" - #TPM9550

8" - #TPM8125

6" - #TPM6107

- Limited 10-year warranty on core of mound.
- Gentle slopes for pick-offs, no more falling off the pitching mound.
- Smooth tapered edges, No "Lips" on Portolite's baseball mounds.
- Highest quality Fiberglass, Poly, and Turf materials.
- Pitching rubbers last 10 times longer than industry standards.
- Hidden "Wear Pad" located in front of the pitching rubber ensures your baseball mound will last season after season.
- Green, Clay, Red, and Tan color turf options.

BASEBALL/SOFTBALL

PAISLEY'S PRO SPIKED GAME MAT

W/ Lane Stripes - #PROSP1036

Without Lane Stripes - #SP1036

The serious game mat for serious softball pitchers. Paisley's Pro Spiked Game Mat delivers the ultimate game experience. Our design features 7,000 spikes to keep pitchers' feet firmly on the mat — no slipping, sliding, or bunching. A longer, wider design means this softball pitching mat offers greater stride length and room to move. More width also means better turf protection. This incredibly durable mat stands up to extreme wear and tear, and the elements. Lane stripes designed for collegiate play.

HOLLYWOOD STYLE BASE SET

#B001PW

- Set of 3 bases
- Brute-strength, pebble embossed, UV-resistant, molded white rubber pro-style base
- HD P.U. foam pad
- Welded steel anchor system, powder coated, rust-resistant
- Reinforced side walls
- Ground anchors and base plugs included



JACK CORBETT® BASE SET

#12901010

- Set of 3 bases - 15"x15"x3"
- High-quality, long-lasting rubber
- Used by Major League Baseball since 1939
- Special ultraviolet inhibitors
- Includes 6" stanchions
- Tapered lip digs into the dirt
- For advanced levels of play
- Used for baseball/softball
- Ground anchors & anchor plugs not included



PRO BASE SET

#B001X

- Set of 3 bases
- Pebble embossed, UV-resistant, molded white rubber pro-style base
- HD P.U. foam pad
- Triple reinforced steel anchor, nickel-plated, rust-resistant
- Reinforced side walls
- Ground anchors and base plugs included



IMPACT BASE SET

#B002

- All rubber base and post enhances safety
- Pillar construction provides vertical stability and horizontal flexibility
- Pebble embossed, UV-resistant
- Ground anchors and base plugs included



DOUBLE FIRST BASE

#B004

- All rubber construction
- Pebble embossed, UV-resistant
- Steel double anchor and base plugs included



HOLLYWOOD IMPACT® DOUBLE FIRST BASE

#12902080

- Premium, professional construction
- Patented chevron design
- Advanced base design compresses upon impact
- Comes with 6" stanchions



HOLLYWOOD IMPACT® DOUBLE FIRST BASE SET

#12902060

- (1) Double First Base, (2) Single Bases

HOLLYWOOD IMPACT® BASE SET

#12902010

- Set of 3 Single bases

Don't forget your base plugs!





Soft Touch® Bases

- Great for game or practice
- Material: Durable cut resistant polyurethane
- Dimensions: (Double) 30 x 15 x 2 3/8 (Single) 15 x 15 x 2 1/2
- These sets are also available with 14" single bases
- Made in the USA
- Replacement parts available
- TURF MODELS AVAILABLE!



Made in the
USA

A SERIES SoftTouch® BASES

#A1500

- (3) 15" bases with in-ground mounting system

#A15DBL-SET

- 15" Double first, 2nd and 3rd base with in-ground mounting system and disk with spike

#A150L

- (3) 15" bases – COVERS ONLY

#A15DBL/NM

- 15" double first base – COVER ONLY

C SERIES SoftTouch® BASES

#C1500

- (3) 15" bases with convertible tees

#C15DBL-SET

- 15" Double first, 2nd and 3rd base with convertible tees

#C150L

- (3) 15" bases – COVERS ONLY

#C15DBL/NM

- 15" double first base – COVER ONLY

S SERIES SoftTouch® BASES

#S1500

- (3) 15" bases with convertible tees

#S15DBL-SET

- 15" Double first, 2nd and 3rd base with convertible tees

#S150L

- (3) 15" bases – COVERS ONLY

#S15DBL/NM

- 15" double first base – COVER ONLY



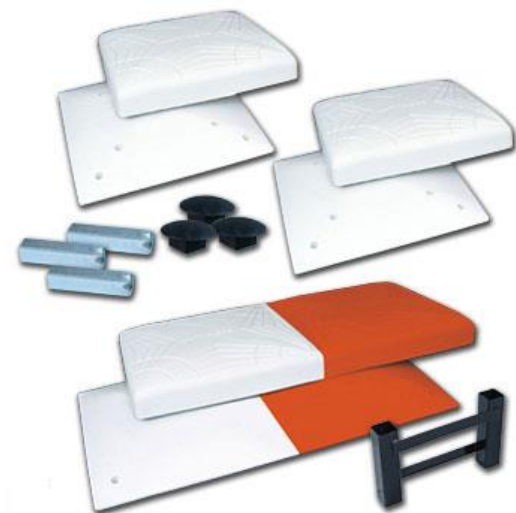
Made in the
USA



- DISLIDGING BASE SET**
#B072
- Set includes 3 single bases
 - Official size to meet Little League requirements
 - HD all rubber pad
 - Complies with Little League rule 1.06
 - Ground anchors and base plugs included



- DISLIDGING DOUBLE FIRST BASE**
#B073
- Official size to meet Little League requirements
 - HD all rubber pad
 - Complies with Little League rule 1.06
 - Steel Double ground anchor and base plugs included



- DISLIDGING DOUBLE FIRST BASE SET**
#B072S
- Set includes 2 single bases and 1 double first
 - Official size to meet Little League requirements
 - HD all rubber pad
 - Complies with Little League rule 1.06
 - Ground anchors and base plugs included



- HOLLYWOOD SLIDER DOUBLE FIRST BASE**
#12905140
- Features beveled corners and tapered base
 - Allows runners to slide over the base, reducing risk of injury
 - Solid, one-piece construction
 - Comes with 6" stanchions



- HOLLYWOOD KWIK RELEASE BASES**
- Premium, professional construction
 - Patented chevron design
 - Advanced base design compresses upon impact
 - Comes with 6" stanchions

- For additional safety, the top of the base will disengage upon strong impact
- Fully compliant with Little League® rule 1.06

YOUTH KWIK RELEASE BASE SET
#12906010

- Set of 3 Single bases

YOUTH KWIK RELEASE DOUBLE FIRST BASE SET
#12906070

- (1) Double first base, (2) Single bases

KWIK RELEASE DOUBLE FIRST BASE ONLY
#12906060

- (1) Double first base

HOLLYWOOD SLIDER DOUBLE FIRST BASE SET
#12905130

- (1) Double first base, (2) Single bases

HOLLYWOOD SLIDER BASE SET
#12905130

- Set of 3 Single bases

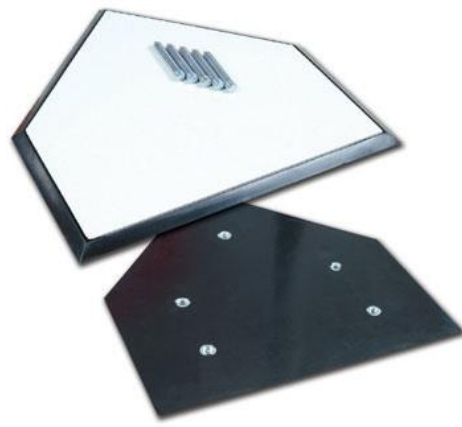




IN-GROUND HOME PLATE SOLID WOOD

#B035R

- Official size
- Moisture resistant solid wood construction is designed for professional use
- Extra durable UV resistant rubber shell



5-SPIKE HOME PLATE

#B031

- Five nickel plated steel threaded spikes



IN-GROUND HOME PLATE WOOD

#B035

- Official size
- Constructed so plate can be buried for permanent installation
- UV resistant rubber won't break down from prolonged exposure to sunlight
- Wooden bottom



STANCHION MOUNT HOME PLATE

#B030I

- Official size
- Tough molded rubber with beveled black border
- Fits same ground anchor as B001X Hollywood style base
- Includes all hardware for assembly plus anchor & base plug



IN-GROUND HOME PLATE WAFFLE BOTTOM

#B035W

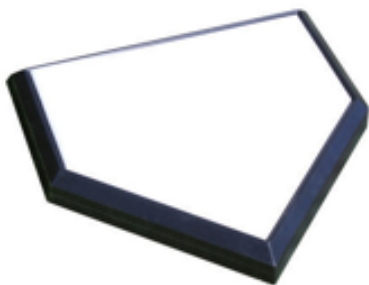
- Official size
- Constructed so plate can be buried for permanent installation
- All-rubber construction
- UV resistant rubber

CLEAT CLEANER

#ACCB



- Perfect for use outside a locker room, near a team bench or on the backside of a pitcher's mound
- Durable all-rubber construction
- 84 spikes for removing mud from cleats
- Can be mounted to treated wood and buried for permanent installation



BULLDOG DOUBLE SIDED HOME PLATE

#BDHP

- Official size
- Double sided for maximum use



3-SPIKE PITCHING RUBBER

Youth - #B041

Official - #B040

- Reinforced threaded steel spike fixtures
- Three nickel-plated steel spikes
- Heavy duty, 1.75 cm thick UV resistant rubber construction



DUAL SPIKE PITCHING RUBBER

Youth - #B048

Official - #B047

- Double spike anchor system allows for quick installation and removal
- Heavy duty rubber construction



STEP DOWN PITCHING RUBBER – WOOD BOTTOM

Youth - #B046

Official - #B045

- Two-level molded construction prevents uneven holes in front of rubber
- Buries for permanent installation
- Heavy duty UV resistant rubber construction



STEP DOWN PITCHING RUBBER – ALL RUBBER

Youth - #B046W

Official - #B045W

- Two-level molded construction prevents uneven holes in front of rubber
- Buries for permanent installation
- Heavy duty UV resistant rubber construction



4-WAY PITCHING RUBBER

Youth - #B044

Official - #B043

- Heavy duty UV resistant rubber construction
- Heavy duty four-side construction ensures flat surface can be rotated for many years of use



BULLDOG 4-WAY PITCHING RUBBER

Official, 4" Center - #BDPR4A

Official, 3" Center - #BDPR3A

Youth, 2" Center - #BDPR3A

- Solid rubber construction



DUAL STANCHION PITCHING RUBBER

Youth - #B049

Official - #B042

- In-ground dual stanchion system
- Rubber secures to anchor with two bolts
- UV resistant rubber





STADIUM FOUL POLES INGROUND

- 12'
- WHITE - #BSPOLE-12PW
- YELLOW - #BSPOLE-12P
- ORANGE - #BSPOLE-12PO
- 15'
- WHITE - #BSPOLE-15PW
- YELLOW - #BSPOLE-15P
- ORANGE - #BSPOLE-15PO
- 20'
- WHITE - #BSPOLE-20PW
- YELLOW - #BSPOLE-20P
- ORANGE - #BSPOLE-20PO
- 30'
- WHITE - #BSPOLE-30PW
- YELLOW - #BSPOLE-30P
- ORANGE - #BSPOLE-30PO

STADIUM FOUL POLES SURFACE-MOUNT

- 12'
- WHITE - #BSPOLE-12SMW
- YELLOW - #BSPOLE-12SM
- ORANGE - #BSPOLE-12SMO
- 15'
- WHITE - #BSPOLE-15SMW
- YELLOW - #BSPOLE-15SM
- ORANGE - #BSPOLE-15SMO
- 20'
- WHITE - #BSPOLE-20SMW
- YELLOW - #BSPOLE-20SM
- ORANGE - #BSPOLE-20SMO
- 30'
- WHITE - #BSPOLE-30SMW
- YELLOW - #BSPOLE-30SM
- ORANGE - #BSPOLE-30SMO

GROUND SLEEVE - #BSPOLE-GS35

- 12'
- 4' L x 18" W steel mesh wing
- 3 1/2" O.D. tubular steel 12' tall galvanized steel post
- Powder coated
- 15'
- 8' L x 18" W steel mesh wing
- 3 1/2" O.D. tubular steel 15' tall galvanized steel post
- Powder coated
- 20'
- 12' L x 18" W steel mesh wing
- 3 1/2" O.D. tubular steel 20' tall galvanized steel post
- Powder coated
- 30'
- 18' L x 18" W steel mesh wing
- 5 9/16" O.D. tubular steel 30' tall galvanized steel post
- Powder coated



Other models are available!
We can get what you need!
Check us out online at
[advancedsportssupply.com!](http://advancedsportssupply.com)



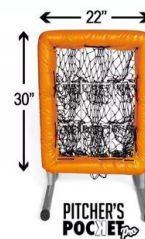


PITCHER'S POCKET

- WORK ON PITCH LOCATIONS IN AND OUT OF THE STRIKE ZONE
- VERSATILE DESIGN FOR INFIELD DRILLS AND THROWING PRACTICE
- PAIRS WELL WITH BATTING CAGES AND PITCHING MACHINES



SIDE BY SIDE COMPARISON



PITCHER'S POCKET pro

- HONE IN ON PITCH ACCURACY IN THE STRIKE ZONE
- ACCURATE AND REALISTIC STRIKE ZONE
- IDEAL FOR BULLPENS AND PITCHING PRACTICE

Pitcher's Pockets

9 Hole - #PITCHERSPOCKET9

12 Hole - #PITCHERSPOCKET12

16 Hole - #PITCHERSPOCKET16

Pro (shown) - #BBPPRO

- Vinyl Colors: Black, Navy, Royal Blue, Columbia Blue, Maroon, Red, Purple, Dark Green, Green, Orange, Yellow

- Industrial Gauge #60 Net with Galvanized Steel Frame. Perfect for outdoor/indoor use
- Challenge the player by ensuring they hit their spots with the individual pockets
- Perfect size to teach players to throw strikes but also big enough to leave the ball out of the zone
- No need for a catcher to ensure you get your daily reps. The nine targets keeps players engaged
- Ships fully Assembled. Adjustable legs change height and detachable for easy storage
- PRO dimensions - 22"W x 30"H
- Regular dimensions - 35"W x 45"H



Bullet L Screen 7'x7'

Standard - #BULLETL

w/ Padding - #BULLETLP

w/ Wheels - #BULLETLW

w/ Padding & Wheels - #BULLELPW

- Vinyl Colors: Black, Navy, Royal Blue, Columbia Blue, Maroon, Red, Purple, Dark Green, Green, Orange, Yellow
- 5-Year Warranty on Frame
- 14 Gauge Galvanized Steel Frame
- #60 UV Treated Nylon, Double Layer Pillowcase Netting
- Heavy Duty 18oz Vinyl & 1 1/2" Impact Foam Padding
- 10" Solid Wheel Kit with Steel Plate Cover Option



Bullet Front Toss 7'Hx5'W

Standard - #BULLEFTP

w/ Padding - #BULLEFTP

w/ Wheels - #BULLEFTPW

w/ Padding & Wheels - #BULLEFTPW

- Vinyl Colors: Black, Navy, Royal Blue, Columbia Blue, Maroon, Red, Purple, Dark Green, Green, Orange, Yellow
- 5-Year Warranty on Frame
- 14 Gauge Galvanized Steel Frame
- #60 UV Treated Nylon, Double Layer Pillowcase Netting
- Heavy Duty 18oz Vinyl & 1 1/2" Impact Foam Padding
- 10" Solid Wheel Kit with Steel Plate Cover Option



Bullet L Screen Combo 7'x7'

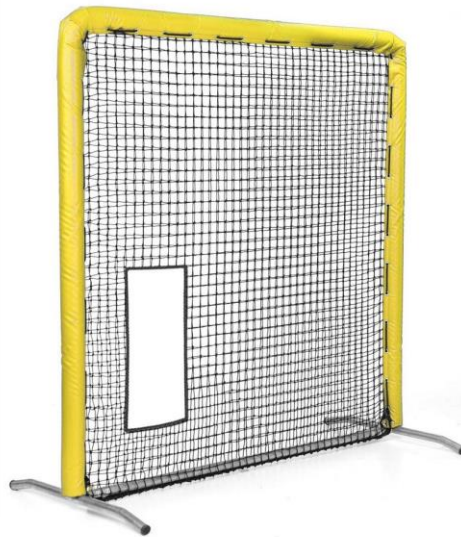
Standard - #BULLETCOMBO

w/ Padding - #BULLETCOMBOP

w/ Wheels - #BULLETCOMBOW

w/ Padding & Wheels - #BULLETCOMBOPW

- Vinyl Colors: Black, Navy, Royal Blue, Columbia Blue, Maroon, Red, Purple, Dark Green, Green, Orange, Yellow
- 5-Year Warranty on Frame
- 14 Gauge Galvanized Steel Frame
- #60 UV Treated Nylon, Double Layer Pillowcase Netting
- Heavy Duty 18oz Vinyl & 1 1/2" Impact Foam Padding
- 10" Solid Wheel Kit with Steel Plate Cover Option



Protective Screens

7'x7' Standard - #PROTECTIVE7X7

7'x7' w/ Padding - #PROTECTIVE7X7P

7'x7' w/ Wheels - #PROTECTIVE7X7W

7'x7' w/ Padding & Wheels - #PROTECTIVE7X7PW

10'x10' Standard - #PROTECTIVE10X10

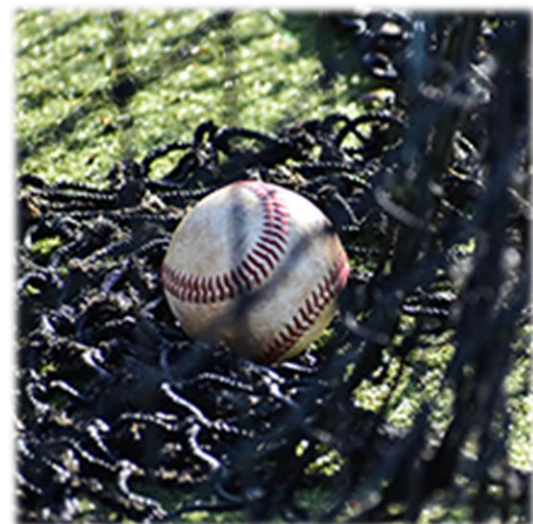
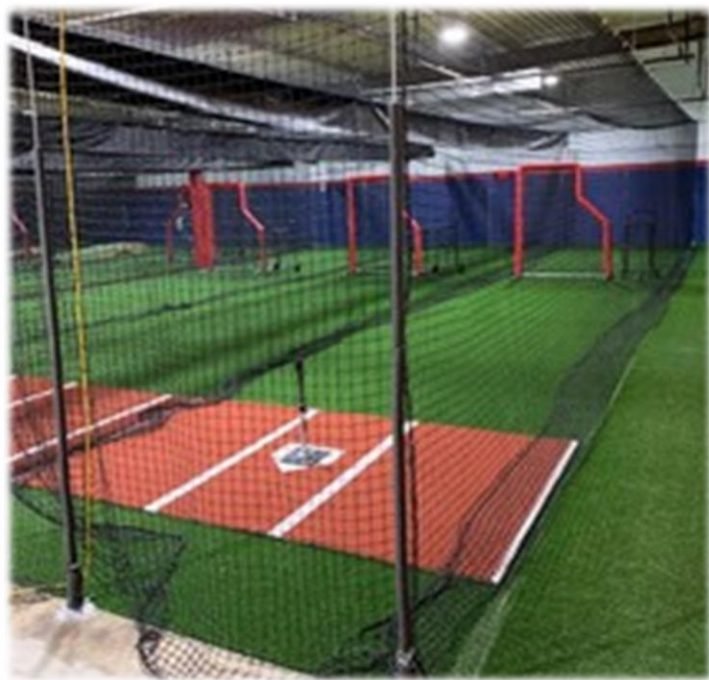
10'x10' w/ Padding - #PROTECTIVE10X10P

10'x10' w/ Wheels - #PROTECTIVE10X10W

10'x10' w/ Padding & Wheels - #PRTOECTIVE10X10PW

- Vinyl Colors: Black, Navy, Royal Blue, Columbia Blue, Maroon, Red, Purple, Dark Green, Green, Orange, Yellow
- 5-Year Warranty on Frame
- 14 Gauge Galvanized Steel Frame
- #60 UV Treated Nylon, Double Layer Pillowcase Netting
- Heavy Duty 18oz Vinyl & 1 1/2" Impact Foam Padding
- 10" Solid Wheel Kit with Steel Plate Cover Option
- Sock Net Available for the 7' x 7'!
- Fastpitch Cutout Net Available for the 7' x 7'!

Other models are available! We can get what you need!



#21 Batting Cage (Netting Only)

NYLON

12'x12'x55' - #21NYLON1255

12'x14'x55' - #21NYLON1455

12'x12'x70' - #21NYLON1270

12'x14'x70' - #21NYLON1470

POLY

12'x12'x55' - #21POLY1255

12'x14'x55' - #21POLY1455

12'x12'x70' - #21POLY1270

12'x14'x70' - #21POLY1470

#36 Batting Cage (Netting Only)

NYLON

12'x12'x55' - #36NYLON1255

12'x14'x55' - #36NYLON1455

12'x12'x70' - #36NYLON1270

12'x14'x70' - #36NYLON1470

POLY

12'x12'x55' - #36POLY1255

12'x14'x55' - #36POLY1455

12'x12'x70' - #36POLY1270

12'x14'x70' - #36POLY1470

- Square, Knotted, UV Treated, and Weather Treated Nylon and Poly Netting
- Entry Flap for Easy Access
- Double Net Baffle Behind Batter for Added Durability
- Sewn Rope Border on All Edges
- Snap Hooks at Corners for Easy Installation
- Weighted Lead Rope Bottom

Custom cage sizes and designs are available! At Advanced Sports Supply, we can design it for you, and get what you need!





Heavy Duty Batting Tee

#B050I

- Heavy-duty, official size rubber plate
- Telescoping rubber tubes adjust height from 21" to 36"
- Bottom tube features PE insert for increased durability

5-Position Batting Tee

#B063

- Train for every pitch with 5 hitting positions
- Heavy-duty, official size rubber plate
- Telescoping tubes adjust height from 21" to 36"
- Tubes snap onto plate for easy transport



Brute Spring Loaded Batting Tee

#B083

- Spring loaded batting tee rebounds after every hit
- Portable and easily collapses for transport
- Flexible top reduces swing resistance
- 8lb weighted base with feet for added support and grip on all surfaces
- Height adjusts from 23" to 43"
- Includes 2-year warranty



Attack Angle Batting Tee

#B085

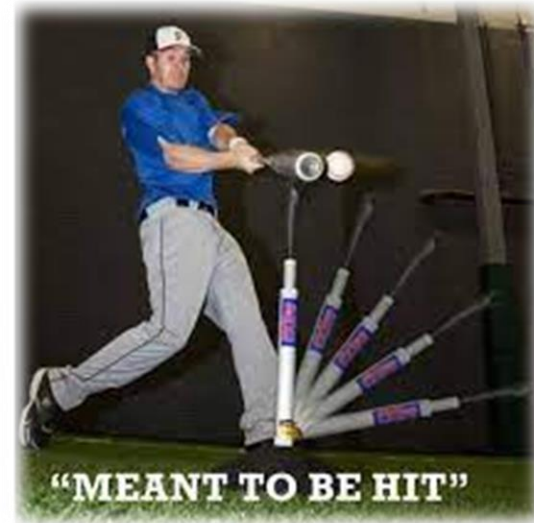
- Position the Attack angle adapter in 5 different positions to achieve varying degrees of attack
- Enhance toughness to achieve a higher level of durability
- Tubes snap onto plate for easy transport
- Height adjusts from 27" to 42"

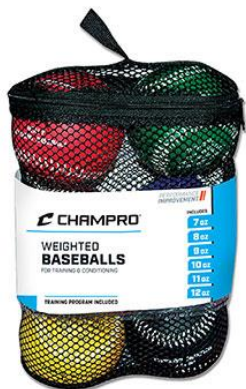


PVTee Batting Tee

#TA2401

- Flexible pivot joint tee rebounds after every hit
- Unique magnet system allows to break down in one second for easy transport
- Weighted rubber base
- Height adjusts from 27" to 47"





Weighted Baseball Set

#CBB7S

- Set of 6 (7 oz, 8 oz., 9 oz., 10 oz., 11 oz. & 12 oz.)
- Full grain leather covers
- Raised Seams
- Training Program included



Weighted Softball Set

#CSB7S

- Set of 4 (9 oz., 10 oz., 11 oz. & 12 oz.)
- Full grain leather covers
- Raised Seams
- Training Program included

Reaction Ball

#CBBRB

- Designed to bounce randomly to enhance coordination and reaction time
- Train solo against a wall or with a partner
- Ideal training tool for any sport



7.5" Training Baseball Set

#CBB775S

- 7.5" baseballs improve batter focus and accuracy.
- Cork and rubber core
- Metered tension 5% wool yarn
- Genuine leather cover

Control Flight Ball - DZN

Baseball 9" - #CBB91

Softball 10" - #CSB93

- 15 oz. weighted ball increases power and contact rate
- Durable, limited flight construction
- Miss-hits provide immediate feedback



WITNESS IMMEDIATE FEEDBACK FOR ALL LEVELS OF SOFTBALL/BASEBALL PRACTICES

Poly Balls

#CBB-51 - 9" White

#CBB-51Y - 9" Optic Yellow

#CSB-51 - 12" White

#CSB-51Y - 12" Optic Yellow

- Ideal for batting practice
- Colors: white & optic yellow



JUGS Bulldog Poly Balls

#B6005 - White Baseball DZN

#B6006 - White Baseball BULK (box of 100)

#B7010 - Optic Yellow Softball DZN

#B7011 - Optic Yellow Softball BULK (box of 84)

- Ideal for batting practice
- Great for Pickleball
- Colors: white (Baseball) & optic yellow (softball)
- Sold in Dozens or Bulk Box

Poly Golf Balls

#CBB-52 - White

#CBB-52Y - Optic Yellow

- Ideal for batting practice





Designated Hitter – PRO & YOUTH

#TA2131 – PRO

#TA2132 – YOUTH

- Can be used indoors or outdoors
- Allows pitchers to practice without live batter
- Builds confidence for pitchers facing different kinds of hitters
- Simulates a left or right-handed batter
- Pro Model Stands 5'9" tall, Youth Model Stands 5'2"
- Is portable and easy to transport
- Comes in red, blue or gray color

CPX Series Fielder's Training Glove

#CPX

- All cowhide leather construction
- Adjustable wrist with hook and loop fastener
- Right Hand Thrower



JUGS Radar Gun

#R2050

- Operates in two user-friendly modes—Trigger mode and Continuous mode.
- FAST, LAST and FAST/LAST Functions: FAST captures readings at the release point. LAST captures readings at the plate. FAST/LAST captures both.
- Five pitch recall
- Data port for transmitting data to a display or computer.
- 6 NiMH rechargeable batteries - Batteries recharge in just 2 hours.

SMART COACH RADAR™ APP SYSTEM

#SR1100

- Instant Feedback with Remote Speed Display and Audio Speed Announcement
- Track Results over time with Instant History Review and Data Export
- Get Speeds Instantly and Record Video with Embedded Speeds at the Same Time
- Review Mechanics and Results with Speed Embedded in Video
- Capture and Share Video with Speed for Remote Coaching
- Share Videos of Results/Improvement Socially to Friends, Coaches and Recruiters
- Upload Your Videos to other training/recruiting software and apps
- Compatible with Pocket Radar App
- Apple Devices Running iOS 14 and above.
- Leading Android Devices Running OS 6.0 and above.
- Bluetooth Connectivity 4.0 and above.
- Product Includes: Radar, Soft-Shell Belt Holster Case, Wrist Strap, 2 AAA alkaline batteries, Quick Start Guide and 2 Year Warranty



BALL COACH RADAR

#PR1000-BC

- The Ball Coach Radar™ is a pro-level radar gun and speed training tool for smart player development through one-on-one coaching or self-guided drills, and hands-free operation keeps it simple.
- NOTE: NOT COMPATIBLE with Pocket Radar App
- Product Includes: Radar, Soft-Shell Belt Holster Case, Wrist Strap, 2 AAA alkaline batteries, Quick Start Guide and 2 Year Warranty





JUGS BP3 Baseball Pitching Machine

#M1030

- Select-A-Pitch™ Dial: The BP®3 throws 9 different pitches at the turn of a dial including fastballs, split-finger fastballs, changeups, and right- and left-handed curveballs, sliders, and cutters.
- Micro-Adjustment: Pinpoint™ control at your fingertips—the most advanced and easy-to-use pitch targeting system ever developed for a pitching machine.
- Fastball/Changeup Hitting Circuit: 3 preset hitting circuits allows the machine to automatically change between fastball and changeup giving your hitters a "real" pitcher vs. hitter experience.
- Patented Grip-Tite™ 12" non-marking pneumatic tires—Average 20-year life expectancy compared to 5-year solid-tire life expectancy.
- Grip-Tite™ tires provide superior pitch accuracy compared to any other 3-wheel machine. Grip-Tite® tires will not melt, crack or chunk like solid tires.
- Always see the ball™ delivery system: A clear and uninterrupted view of the ball throughout the entire pitch process allows the hitter to realistically time their stride.
- Throws baseballs, JUGS Pearl®, Sting-Free® baseballs, Lite-Flite® baseballs, Softie® baseballs and Bulldog™ poly balls.
- Runs on 110-volt AC or the Powerhorse® Portable Inverter Generator—2000.



JUGS BP2 Baseball Pitching Machine

#M1020

- Realistic delivery height of 64" for a downward plane on the pitch
- Digital speed adjustment allows you to adjust speed with the turn of a knob (Speed range of 45-90 mph)
- Pinpoint Micro-Adjustment locates pitches instantly - right to left, up or down with a quick turn of the wrist
- 6 pre-set pitch positions - Tire chassis rotates around the feed chute for fast and easy setup
- Select-A-Pitch Dial - change between 6 pitches with a turn of the dial for fastballs, split-fingers, left or right handed curveballs, and left or right handed sliders
- Easy to move and setup
- Trusted and used at any level of baseball play



JUGS MVP Combo Pitching Machine

#M1601

- Throw at the speed you desire (20-60 mph) with a digital readout display
- For baseball: The MVP® comes with a baseball chute and long straight legs
- For softball: The MVP® comes with a 12" softball chute and curved legs
- Throws baseballs, softballs, sting-free, dimpled, and seamed balls
- Special non-marking pneumatic tire
- Patented "always see the ball"™ delivery system
- Weight: 56 lbs



JUGS Combo Pitching Machine

#M1300

- This machine has the ability to throw 20-104 mph
- Lets you switch from baseball to softball in a matter of seconds
- Portable, easy to set up, and perfect for tight budgets.
- Patented goose neck design provides full range of movement to adjust for all types of pitches - fastballs, curveballs, sliders and split-finger fastballs
- The swivel-design base provides 360 degree movement to produce fly balls, ground balls, and pop-ups



DIMPLED MACHINE BALLS

- #CBB-58 – **Baseball Yellow**
- #CBB-58Y – **Baseball Optic Yellow**
- #CBB-56 – **Baseball White**
- #CSB-59 – **12" Softball Yellow**
- #CSB-57 – **11" Softball Yellow**
- Soft dimple molded baseball
- Ideal for Jugs® machine



JUGS Pearl Machine Baseball

#B5200 – **Dozen**

#B5210 – **Bucket of 4 DZN**

- Sold by the dozen and by the bucket (4-dozen)
- The first leather baseball designed specifically for pitching machines
- FULL GRAIN LEATHER COVER, cushion-corked center, wool winding
- KEVLAR SEAM lasts 5 times longer than any other brand of baseball when used with machines
- Regulation size and weight: 9 in./5 oz



Diamond Machine Softball

#12MPB

- Full grain leather
- Dual color stitching
- Kevlar reinforced flat seams



Diamond Machine Baseball

#DMPB

- Full grain leather
- Dual color stitching
- Kevlar reinforced flat seams
- Blended cork and rubber core



NFHS/NOCSAE Tournament Baseballs



Wilson A1010 PRO-SST **NFHS** #WTA1010BPROSST

- NFHS stamped/approved
- A-grade full grain leather and Super Seams
- Premium gray wool/double cushioned cork pill
- Dura-Core technology



Diamond D1-PRO HS **NFHS** #D1-PRO HS

- NFHS stamped/approved
- A-grade full grain leather
- Raised Diamond seams
- Premium A-1 grade gray wool
- Double cushioned cork pill



Rawlings R100-H1 **NFHS** #R100-H1

- NFHS stamped/approved
- Full grain leather
- Superstitch high seam technology
- Cushioned cork center



Rawlings R100-H2 **NFHS** #R100-H2

- NFHS stamped/approved
- Full grain leather
- Rawlings raised seam technology
- Cushioned cork center



Rawlings R100-H3 **NFHS** #R100-H3

- NFHS stamped/approved
- Full grain leather
- Rawlings raised seam technology
- Cushioned cork center



Rosin Bag - DZN #A020

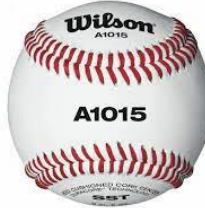
- Powdered rosin dries hands immediately for better grip
- Can be used on hands or bat handle
- Long lasting rosin mixture in cloth bag

NFHS/NOCSAE Game Baseballs



Wilson A1010 HS1-SST **NFHS** #WTA1010BHS1SST

- NFHS stamped/approved
- A-grade full grain leather and Super Seams
- Gray wool/double cushioned cork pill
- Dura-Core technology



Wilson A1015 SST **NFHS** #WTA1015BSST

- NFHS stamped/approved
- B-grade full grain leather and Super Seams
- Gray wool/double cushioned cork pill
- Dura-Core technology



Diamond D1-HS **NFHS** #D1-HS

- NFHS stamped/approved
- Premium grade leather
- Raised Diamond seams
- Select grade gray wool
- Double cushioned cork pill



Diamond DOL-A **NFHS** #DOL-A HS

- NFHS stamped/approved
- Premium grade leather
- Raised Diamond seams
- Select grade gray wool
- Double cushioned cork pill



Champro CBB300 HS **NFHS** #CBB300HS

- Ideal for HS game or College Practice
- Full grain leather
- MTB moisture barrier technology
- Cushioned cork center
- Raised seams



Rawlings ADV-1 **NFHS** #ADV-1

- NFHS stamped/approved
- Full grain leather
- Rawlings raised seam technology
- Cushioned cork center



Rawlings ADV-2 **NFHS** #ADV-2

- NFHS stamped/approved
- Full grain leather
- Rawlings raised seam technology
- Cushioned cork center

Practice Baseballs



Wilson A1010S

#WTA1010S

Bucket of 3dzn - #WTA1098 X-OUT

- A1010 balls with minor imperfections
- Super seams with A-grade full grain leather
- Gray wool/double cushioned cork pill
- Dura-Core technology



Wilson A1030 (Batting Practice)

#WTA1030B

Bucket of 3dzn - #WTA1098 1030

- College and HS practice
- Super seams with full grain leather
- Gray wool/double cushioned cork pill
- Dura-Core technology



Diamond DOL-DBA

#DOL-DBA

- Duracover synthetic cover
- Raised seams
- Yarn wound
- Cushioned cork pill



Diamond Bucket Combos

#BKT B DOL-A OL

#BKT B DBX 30

- Premium grade leather with blems
- Diamond seams
- Select wool
- Cushioned cork pill
- (30) Balls per bucket



Ball Bucket with Padded Lid

#BUCKET-B

- Durable plastic construction
- Foam padded lid for comfortable sitting
- Fits 4 dzn baseballs or 18 softballs
- 6-Gallon capacity



Easton MEGA Ball Bag

#A159061BK

- Holds 132 baseballs or 51 softballs
- Large zipper opening for easy access
- Main opening flap designed for team embroidery
- Five strategically placed for added durability
- 11.5" L x 11.5" H x 17" H



Champro Ball Caddy

#NB33

- Two-in-one design combines stand for batting practice with a removable drawstring storage bag
- Shock corded steel poles form tri-pod for greater stability
- Assembles and collapses in minutes
- Carrying capacity: 60 baseballs, 30 softballs; standing capacity: 120 baseballs; 60 softballs



Diamond Ball Bag

#BALL BAG – COLOR?

- Heavy-duty water resistant fabric
- Reinforced side panels to keep bag upright
- Holds 5 dozen baseballs or 2 dozen softballs
- Durable plastic base
- Heavy-duty zippers
- 7" x 10" x 16"
- Available in Black, Scarlet, Royal, Navy



Champro Ball Bag

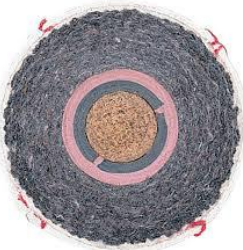
#E7

- Water-resistant, 600D polyester with inner lining
- Main compartment has zipper closure
- 2" web handles
- Holds 48 baseballs or 24 softballs



Other models are available! We can get what you need!

Youth League Baseballs



Diamond Youth Tournament

- #DSLL – Senior LLL
- #DLL – Little League
- #DBR – Babe Ruth
- #DPL – Pony League
- #DCR – Cal Ripken
- #DDB – Dixie Boys and Majors
- #DDY – Dixie Youth

- o Tournament Grade, Official Stamp/Approved
- o Premium full grain leather with Diamond seams
- o A-grade wool blend with double cushioned cork pill



Diamond Youth Regular Season

- #DSLL-1 – Senior LL
- #DLL-1 – Little League
- #DBR-1 – Babe Ruth
- #DPL-1 – Pony League
- #DCR-1 – Cal Ripken
- #DDB-1 – Dixie Boys and Majors
- #DDY-1 – Dixie Youth

- o Competition Grade, Official Stamp/Approved
- o Premium grade leather with Diamond seams
- o Select wool blend winding with blended core



Wilson Youth Tournament

- #WTA1072BSST – Senior LL
- #WTA1074BSST – Little League
- #WTA1082BSST – Babe Ruth
- #WTA1075BSST – Pony League
- #WTA1062BSST – Dixie Youth

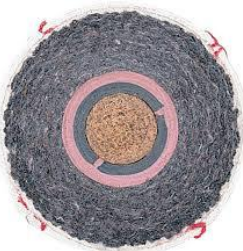
- o Tournament Grade, Official Stamp/Approved
- o B-grade full grain leather with Super Seams
- o Grey wool blend with double cushioned cork pill
- o Dura-Core technology



Wilson Youth Regular Season

- #WTA1072BSLL1 – Senior LL
- #WTA1074BLL1 – Little League
- #WTA1082BBR1 – Babe Ruth
- #WTA1075BPL1 – Pony League
- #WTA1078BCR1 – Cal Ripken
- #WTA1066BDM1 – Dixie Boys and Majors
- #WTA1062BDY1 – Dixie Youth

- o Competition Grade, Official Stamp/Approved
- o C-grade full grain leather with Super Seams
- o Grey wool blend with double cushioned cork pill



Rawlings Youth Tournament

- #RSLL – Senior LL
- #RLLB – Little League
- #RBRO – Babe Ruth
- #RPLB – Pony League
- #RCAL – Cal Ripken

- o Tournament Grade, Official Stamp/Approved
- o Premium full grain leather with Rawlings raised seams
- o Select wool blend with double cushioned cork pill



Rawlings Youth Regular Season

- #RSLL1 – Senior LL
- #RLLB1 – Little League
- #RBRO1 – Babe Ruth
- #RPLB1 – Pony League
- #RCAL1 – Cal Ripken
- #RDYB1 – Dixie Youth

- o Competition Grade, Official Stamp/Approved
- o Full grain leather with Rawlings raised seams
- o Select wool blend winding with blended core



Champro Youth Tournament & Regular Season

- #CBB-300LL – Tournament Little League

- #CBB-200LL – Regular Season Little League



Reduced Compression & Tee Ball Baseballs



Diamond FlexiBall Low Compression

#DFX-LC1LL – Level 1

#DFX-LC5LL – Level 5

- Excellent for indoors and out, Official Stamp/Approved
- Synthetic covers with FlexiBall Core
- Designed for tee ball games or indoor practice



Wilson Soft Compression

#WTA1217 – Level 1

#WTA1228 – Level 5

- Excellent for indoors and out, No league stamp
- Ultra grip cover and solid sponge rubber core
- Designed for tee ball games or indoor practice



Champro Safe-T-Soft Low Compression

#CBB-61 – Level 1

#CBB-65 – Level 5

- Excellent for indoors and out, No league stamp
- Solid sponge rubber core
- Designed for tee ball games or indoor practice

Reduced Compression & Tee Ball Softballs



Champro Safe-T-Soft 10"

#CSB67 – 10" Durahide

- Ideal for indoor training & t-ball
- Optic yellow durahide cover
- Solid foam rubber core
- Flat red seam
- RIF 1



Champro Safe-T-Soft 12"

#CSB62 – 12" Durahide

- Ideal for indoor training & t-ball
- Optic yellow durahide cover
- Solid foam rubber core
- Flat red seam
- RIF 3



Champro Safe-T-Soft 11"

- Ideal for indoor training & t-ball
- Optic yellow durahide cover
- Solid foam rubber core
- Flat red seam
- RIF 3

#CSB63 – 11" Durahide



Other models are available! We can get what you need!

NFHS Fastpitch Softballs



Wilson A9011



#WTA9011BSST – 12" Leather

- NFHS stamped/approved
- Solid polyurethane core
- Optic yellow cover
- 47 COR, 375 compression, red stitch
- Raised super seams



Rawlings NFHS & ASA



#C12RYLAH – 12" Leather

- NFHS/ASA stamped/approved
- Solid polyurethane core
- Optic yellow cover
- 47 COR, 375 compression, red stitch
- Raised Dream Seams



Dudley 43147



#43147 – 12" Leather

- NFHS stamped/approved
- Solid polyurethane core
- Yellow cover
- 47 COR, 375 compression, red stitch
- Raised seams



Champro NFHS



#CSB5LYN – 12" Leather

#CSB5DYN – 12" Durahide

- NFHS stamped/approved
- Solid polyurethane core
- Optic yellow cover
- 47 COR, 375 compression, red stitch
- Raised seams

Little League Fastpitch Softballs



Dudley Little League

#4L-915Y – 12" Synthetic

#4L-713Y – 11" Synthetic

- Little League stamped/approved
- Solid polyurethane core
- Yellow cover
- 47 COR, 375 compression, red stitch
- Raised seams



Champro Little League

#CSB28 – 12" Durahide

#CSB27 – 11" Durahide

- Little League stamped/approved
- Solid polyurethane core
- Optic Yellow cover
- 47 COR, 375 compression, red stitch
- Raised seams

Recreational Fastpitch Softballs



Champro Rec League

#CSB65 – 12" Durahide

#CSB66 – 11" Durahide

- Practice core
- Optic yellow durahide cover
- Raised seam, red stitch
- Perfect for outdoor practice



Champro Rec League GAME

#CSB18 – 12" Durahide

- Solid polyurethane core
- Optic yellow durahide cover
- .44 COR, 375 compression, red stitch
- Raised seam

Other models are available! We can get what you need!



Champro Line-up Cards

#AF61

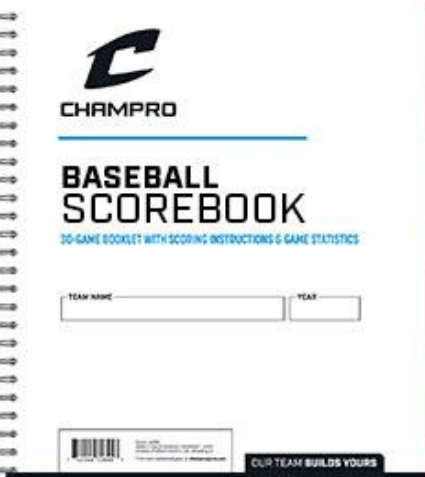
- Four Part Form
- Packaged in sets of 12



Wilson Line-up Cards

#WTA6761

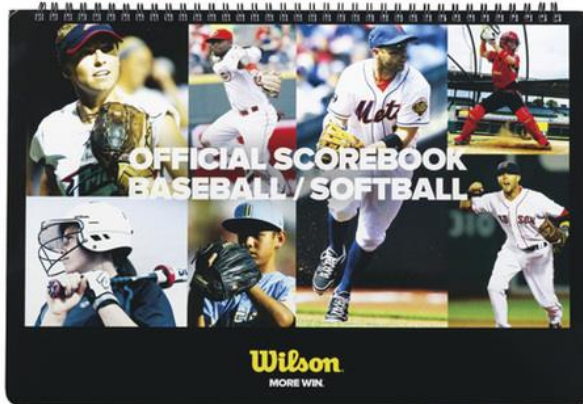
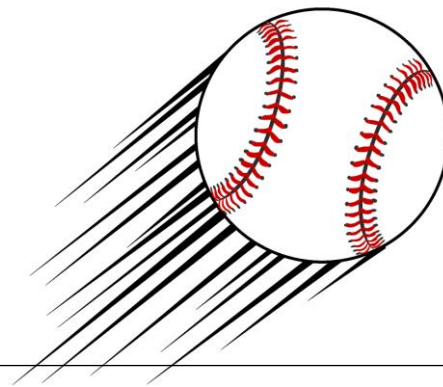
- 30 pack of line-up cards
- Hard Case with clipboard included



Champro Baseball/Softball Scorebook

#A07

- Includes scoring sheets for 28 games
- Each game includes 18 player scores per team
- Includes scoring instructions and line-up cards
- Heavy-duty cardstock backing



Wilson Baseball/Softball Scorebook

DESIGNALIKIE

#WTA3753

- Easy to read landscape format
- Includes rules, scorekeeping, guide, and pitch count
- 17 player slots



Diamond Bucket Sleeve

#BKT SLEEVE – COLOR?

- Designed for Diamond 6-gallon bucket
- Heavy-duty water resistant fabric
- Padded seat top and adjustable shoulder strap
- Pockets for water bottle, cell phone, sunglasses, scorebook, line-up card and pens
- Mesh pocket for game balls
- Team name ID window
- 18" x 13"
- Available in Black, Scarlet, Royal, Navy



The Grill - Defensive Fielder's Facemask

#CM01 – Adult

#CM01Y – Youth

- Dual "Grill" guards for full facial protection
- Durable low-profile steel wire construction
- Wide eye opening for enhanced sightlines
- Customize the fit with repositionable chin cup and forehead liner
- Adjustable harness with ponytail slot
- Available colors: Black, Heather Pink, Heather Lime Green, Heather Optic Blue, Royal, Scarlet, Silver, White



Rampage Softball Fielder's Facemask

#CM02 – Adult

#CM02Y – Youth

- Max sight lines let you see the entire field
- 30% lighter than bent wire style masks
- 8 oz. premium, molded magnesium frame
- Removable and washable moisture wicking pads
- Adjustable harness with ponytail slot
- Available colors: Black, Forest Green, Gold, Heather Black, Heather Pink, Maroon, Navy, Optic Pink, Optic Yellow, Purple, Royal, Scarlet, Silver, White





HX Legend Plus

#HXM2JG??S – Senior

#HXM2JG??J – Junior

- Exclusive design maximizes airflow and visibility
- Weight-optimized shell with impact foam for ideal fit and feel
- Jaw pads are wrapped with soft-touch, moisture-wicking fabric for comfort and durability
- BioFresh/DRI-GEAR® moisture wicking pad liner
- Meets NOCSAE standard
- Patent pending HX Jaw guard included
- Two-tone matte finish
- Available colors: Black/White, Charcoal/Black, Navy/White, Royal/White, Scarlet/White, White/Black



HX Rookie

#HXU?S– Senior

#HXU?J – Junior

#HXU?T – T-Ball

- Exclusive design maximizes airflow and visibility
- Weight-optimized shell with impact foam for ideal fit and feel
- BioFresh/DRI-GEAR® moisture wicking pad liner
- Meets NOCSAE standard
- Uncoated finish
- Available colors: Black, Navy, Royal Scarlet



HX Baseball Mask

#HXFM

- Installs in minutes with simple Phillips or flat-blade screwdriver
- Precision-welded, tempered steel frame optimizes sight lines
- Includes HXCS chinstrap



HX Rise Pro Fastpitch

#HXFPG2?S – Senior

#HXFPG2?J – Junior

- Exclusive design maximizes airflow and visibility
- Weight-optimized shell with impact foam for ideal fit and feel
- Mesh-wrapped pads for comfort and durability
- BioFresh/DRI-GEAR® moisture wicking pad liner
- Meets NOCSAE standard
- All sizes include HXMS facemask
- Two-tone graphics with glossy finish
- Available colors: White/Black, White/Navy, White/Pink, White/Royal, White/Scarlet



HX Rookie Fastpitch

#HXFPU?S – Senior

#HXFPU?J – Junior

#HXFPU?T – T-Ball

- Exclusive design maximizes airflow and visibility
- Weight-optimized shell with impact foam for ideal fit and feel
- BioFresh/DRI-GEAR® moisture wicking pad liner
- Meets NOCSAE standard
- All sizes include HXMS facemask
- Solid color uncoated finish
- Available colors: Black, White



Triple Crown Open Bottom Pant

#BP9UA – Adult

#BP9UY – Youth

- Loose fit, straight leg, open bottom pant
- 2 1/2" knit waistband with super-grip gel strips keep your jersey tucked
- Seven pro-style tunnel belt loops
- Reinforced double-ply sliding seat & knee
- Two inset back pockets
- Perfect inseam allows instant inseam length adjustment that secures with hook and loop
- Tek-Knit 100% polyester, 14 oz. pro-weight fabric with 4-way stretch
- Available colors: Black, Graphite, Grey, White

Triple Crown Knicker

#BP10A – Adult

#BP10Y – Youth

- Tek-Knit 100% polyester, 14 oz. pro-weight fabric with 4-way stretch
- Modern "knicker" cut with elasticized leg openings
- 2 1/2" knit waistband with super-grip gel strips keep your jersey tucked
- Seven pro-style tunnel belt loops
- Reinforced double-ply sliding seat & knees
- Two inset back pockets
- Available colors: Black, Graphite, Grey, White

Brute Belt

#A060 – Adult

#A060Y – Youth

- Genuine bonded leather tab
- Measured tab 9-gauge thickness
- Brute strength reinforced rivet buckle
- Adult adjusts from 24" to 48"
- Youth adjusts from 18" to 34"
- Includes 1 year warranty
- Available colors: Black, Brown, Light Blue, Cardinal, Forest Green, Gold, Grey, Kelly Green, Maroon, Navy, Optic Pink, Orange, Pink, Purple, Royal, Scarlet, Teal, White



Piping & Pinstripes are available!



Tournament Low Rise Softball Pant

#BP11A – Adult

#BP11Y – Youth

- Tek-knit 100% polyester, 14 oz. pro-weight fabric with 4-way stretch
- Traditional low-rise pant with tapered leg and elastic leg openings
- Reinforced double-ply knees
- 2.5" knit waistband with super-grip gel strips keeps jersey tucked
- Seven pro-style tunnel belt loops
- Two inset back pockets
- Available colors: Black, Graphite, Grey, Navy, Scarlet, White

Fireball Softball Pant

#BP39W – Adult

#BP39G – Youth

- Tek-knit 100% polyester, 14 oz. pro-weight fabric with 4-way stretch
- Low-rise softball knicker with zippered fly and double snap closure
- 2" printed elastic waistband with contrast color inner drawcord
- Reinforced double-ply knee
- Elastized leg openings
- Available colors: Black, Graphite, Grey, Royal, Scarlet, White

ADULT APPAREL

	CHEST SIZE	WAIST SIZE
XS	32	26
SMALL	34-36	28-30
MEDIUM	38-40	32-34
LARGE	42-44	36-38
XL	46-48	40-42
2L	50-52	44-46
3XL	54-56	48-50
4XL	58-60	52-54

WOMEN'S APPAREL

	BUST	WAIST	HIP
XS	31-33	24-26	34-36
SMALL	33-35	26-28	36-38
MEDIUM	35-37	28-30	38-40
LARGE	37-39.5	30-33	40-43
XL	39.5-42	33-36	43-46
2XL	42-45	36-40	46-49
3XL	45-48	40-44	49-52

YOUTH APPAREL

	CHEST SIZE	WAIST SIZE
XXS	22-24	19-21
XS	24-26	21-23
SMALL	26-28	23-25
MEDIUM	28-30	25-27
LARGE	30-32	27-29
XL	32-34	29-31
2XL	34-36	31-33

GIRLS' APPAREL

	BUST	WAIST	HIP
XS	22-24	20-21.5	22-25
SMALL	24-26.5	21.5-23	25-29
MEDIUM	26.5-29	23-25	29-32
LARGE	29-32	25-27	32-35
XL	32-35	27-29	35-37

Piping is available!



Demarini Voodoo OG Batpack

#WB57117??

- Large main compartment fits helmet, glove, and more
- Neoprene bat sleeves hold up to 2 bats
- Padded shoulder straps and back paneling 2 additional front valuables pockets
- Fleece-lined cell phone pocket
- Removable decoration panel
- Separate shoe compartment
- Mesh water bottle slot
- Water-resistant bottom
- Integrated fence hook
- Corded zipper pulls
- Dimensions: 19" H x 12.25" W x 12" D, Weight: 2.2 lbs
- Available colors: Black, Charcoal, Dark Green, Light Gold, Maroon, Navy, Orange, Purple, Royal, Scarlet, White, USA, Victory Blue, Texas Orange, Cardinal, Vegas Gold

DEMARINI

DEMARINI



Demarini Momentum 2.0 Wheeled Bag

#WB57117??

- Bat sleeves holds up to 4 bats
- Two interior shelves to separate players gloves or cleats from other gear
- Interior support bracket
- Side accessory pocket
- Interior L bracket to help prevent bag blowouts
- Inline wheels for smooth roll
- Two integrated fence hooks
- Removable decoration panel
- Dimensions: 36" L x 12" W x 12" H
- Available colors: Black, Navy, Royal, Purple, Victory Blue, Maroon, Orange, White, Light Gold, Scarlet, Dark Green



Easton Dugout Wheeled Bag

#A159055??

- 38" L x 14" W x 13" H
- Durable construction
- 1-piece molded base allows bag to stand upright
- Long-Lasting YKK® zippers on main compartments
- Large mouth opening for easy access to main compartment
- Rugged inline wheels
- Personal side pocket
- Removable panel for embroidery
- Padded compartment w/ fence hooks
- Holds up to five bats
- Reinforced carry straps
- Available colors: Black, Navy, Royal, Scarlet

EASTON

BASEBALL/SOFTBALL



EVOLUTION SOCCER GOAL

- 1.1 Elliptical - #2B3306**
- 1.1 Elliptical SW - #2B3306SW**
- 2.1 Round - #2B3406**
- 2.1 Round SW - #2B3406SW**

- NCAA and NFHS approved
- Aluminum post and crossbar and includes the Kwik Lock® Net System around the entirety of the frame for added net security.
- Evolution 1.1 features a 4"x 5" elliptical post and crossbar
- Evolution 2.1 features a 4-3/8" round post and crossbar

Includes:

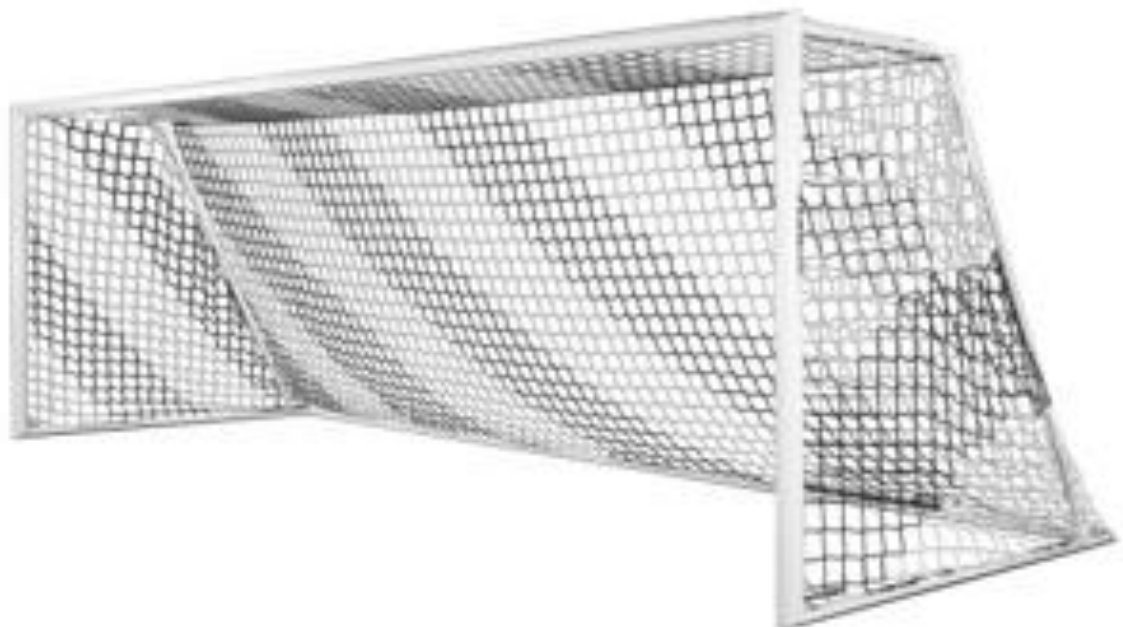
- 3mm, 120mm mesh, black/white net (3B2162)
- Net Support Strap (10B4406)
- Kwik Lock® Net Clips (10B31)
- 4 semi-permanent ground anchors (10B103)
- *If you choose an **SW** model, you have chosen the Swivel Wheel option. Includes 4 removable swivel wheels with no-flat tires and 6 Saddle Anchor Bags (10B1605)

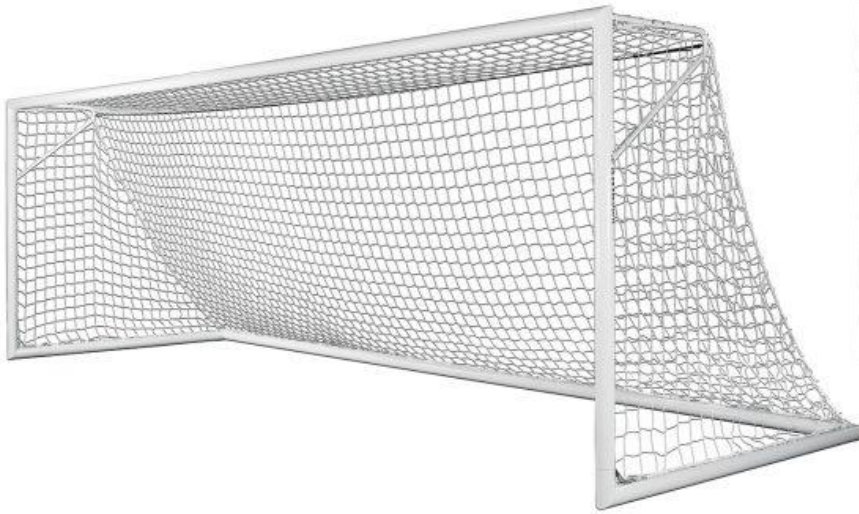


Elliptical



Round





FUSION® SOCCER GOAL

8' x 24' SW (wheeled) - #2B3806SW

8' x 24' - #2B3806

7' x 21' - #2B3805

6.5' x 18.5' - #2B3804

- NCAA and NFHS approved
- 4" round, aluminum frame
- White, powder-coated finish

Includes:

2B3806 (8' x 24')

- 3mm, 3 1/2" mesh, white net (3B6826)
- Net Support Strap (10B4406)
- Kwik Lock® Net Clips (10B31)
- 4 semi-permanent ground anchors (10B103)

2B3804 (6.5' x 18.5')

- 3mm, 3 1/2" mesh, white net (3B6824)
- Kwik Lock® Net Clips
- Net Support Strap (10B4404)
- 4 semi-permanent ground anchors (10B103)

2B3805 (7' x 21')

- 3mm, 3 1/2" mesh, white net (3B6825)
- Kwik Lock® Net Clips
- Net Support Strap (10B4405)
- 4 semi-permanent ground anchors (10B103)





FUSION® 120 SOCCER GOAL

8' x 24' #2B3906

- NCAA and NFHS Approved
- Designed to fit perfectly in front of almost any set of football uprights
- 4" round, aluminum frame
- Professional, white powder-coated finish

Includes:

- 3mm, 120mm mesh, white net (3B5921)
- Net Support Strap (10B4406)
- Kwik Lock® Net Clips (10B31)
- 4 no-flat, flip-up tires (10B409)
- 4 semi-permanent ground anchors (10B103)
- 6 Saddle Anchor Bags (10B1605)



COMBINATION FOOTBALL/SOCCER GOAL

8' x 24' #2D301

The 2D301 Combination Football/Soccer Goal meets NFSHSA and USSF standards.

Includes:

- 3mm, 3 1/2" mesh, white net (3B6826)
- Kwik Lock® Net Clips (10B31)
- 2 ground sleeves with caps



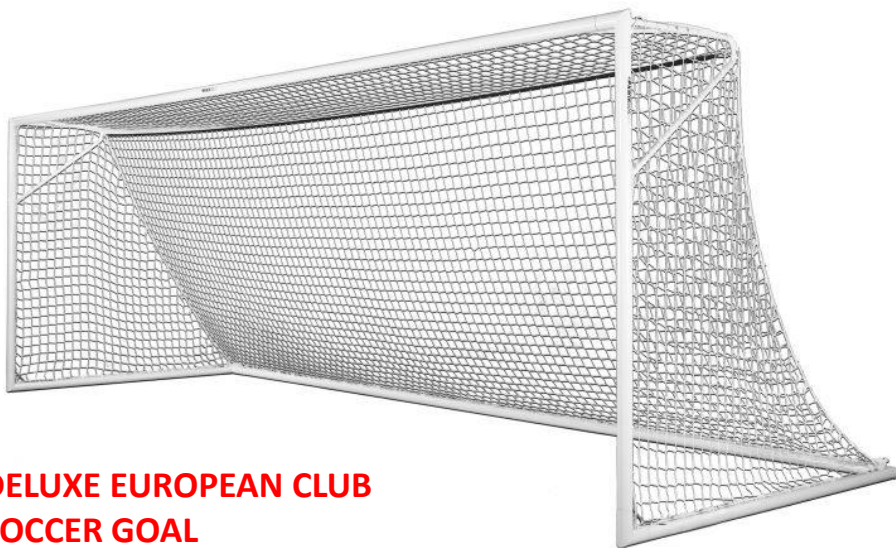
2022 Catalog

Connect With Us



Check us out online at
advancedsportssupply.com
 or call
812-556-2036!





DELUXE EUROPEAN CLUB SOCCER GOAL

8' x 24' - #2B3006

7' x 21' - #2B3005

6.5' x 18.5' - #2B3004

6.5' x 12' - #2B3003

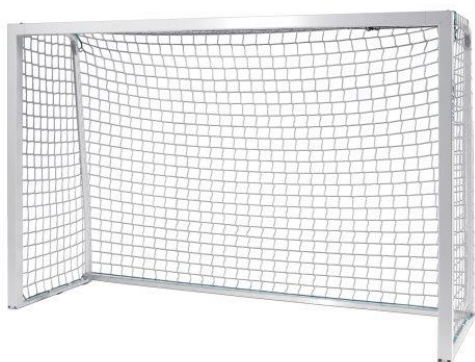
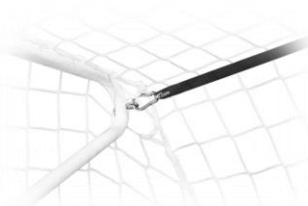
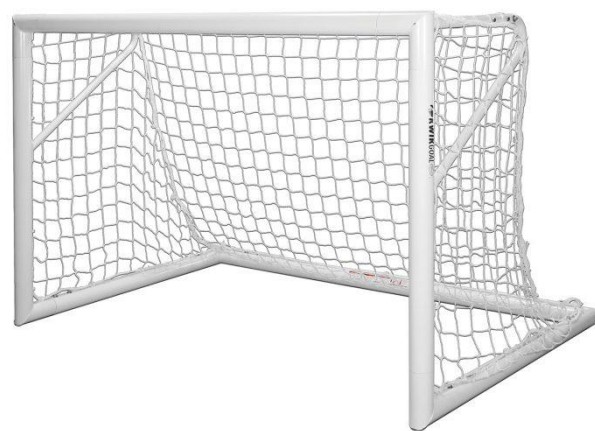
4.5' x 9' - #2B3002

4' x 6' - #2B3001

- NFHS approved
- All-aluminum construction
- European-style backstays give this goal an international look

Includes:

- 3mm, 3 1/2" mesh, white net
- Net Support Strap
- Kwik Lock® Net Clips
- Anchors



OFFICIAL FUTSAL GOAL

#2P201

The Official Futsal Goal meets both the international Futsal standards and ASTM Safety Standard F2950-14 – making it both a safe and ideal choice for futsal matches around the world. This Official Futsal Goal features an all-surface friendly design and a 3.15" x 3.15" square, all-aluminum frame with the unique Kwik Lock net system. This futsal goal is 6'7"H x 9'10"W.

Includes:

- 4mm, 120mm mesh, white net (3B5001)
- Kwik Lock® Net Clips (10B31)
- Protective floor pads (10B601)
- 4 Saddle Anchor Bags (10B1605)
- 4 semi-permanent ground anchors (10B103)





SADDLE ANCHOR BAG

#10B1605

- Stainless steel clasp and “D” ring
- Used for portable indoor/outdoor installation
- Straddles bottom bar for clean, secure fit
- Bag top openings allow for continuous net attachment
- Plastic center strip for additional support
- Reinforced stitching and zipper
- Fill with up to 40 lbs. of sand
- Sand not included



HEAVY DUTY ANCHOR BAG

#10B7011

- PVC coated polyester bladder
- Used for portable indoor/outdoor installation
- Rigid plastic handle for easy carrying
- Openings in handle area offer continuous net attachment
- Fill with up to 40 lbs. of sand
- Sand not included

GROUND ANCHORS

#10B103



- Zinc-plated, steel anchors
- Stainless steel hardware
- Semi-permanent, outdoor installation
- 1 set of 4 anchors secures one goal

EURO MATCH/FUSION® GOAL WHEEL OPTION

#10B409



- Rotating wheel bracket
- No-flat tires
- 1 set of wheels per 1 goal
- Fits Pro Premier®, European Match and Fusion® Goals



KWIK LOCK® NET CLIPS (100 pack)

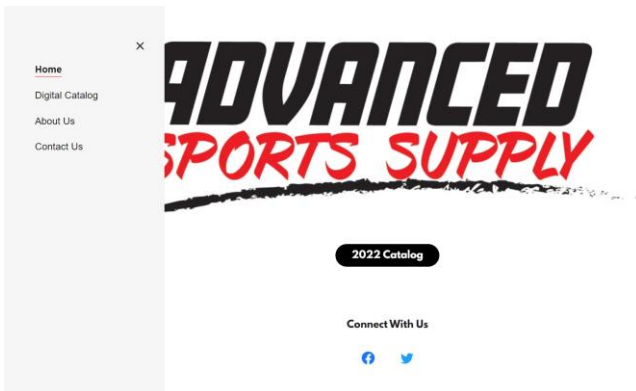
White - #10B3101

Black - #10B3106

Blue - #10B3104

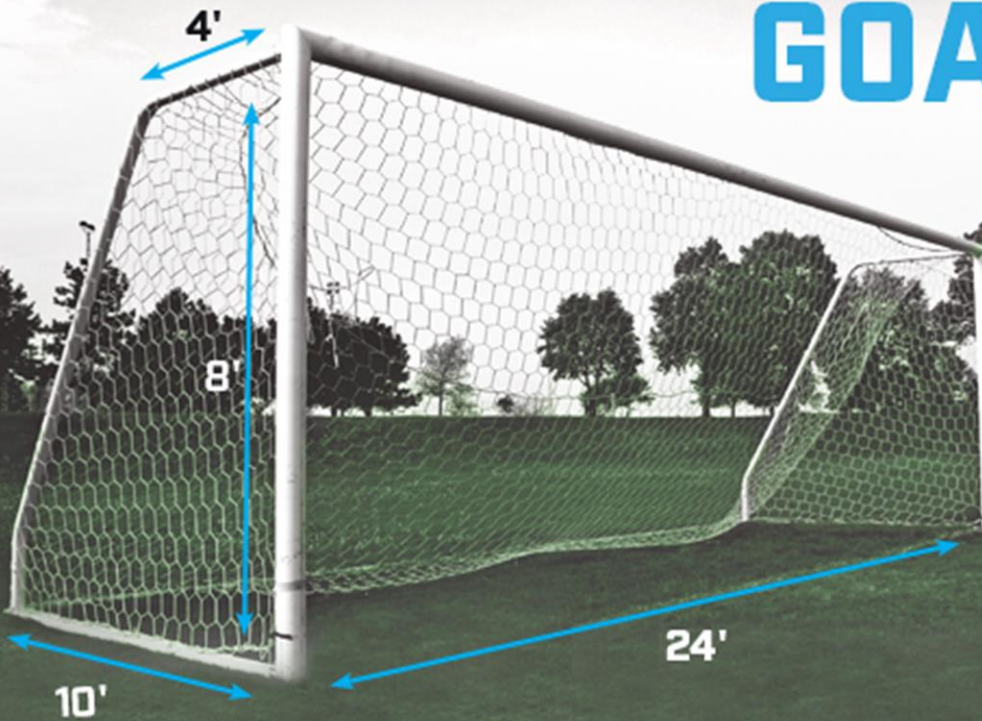
Red - #10B3112

- Fits goals with Kwik Lock® and Evolution Net Systems
- 100 clips attach 1 net to an 8' x 24' goal



Check us out online at
advancedsportssupply.com
 or call
812-556-2036!

GOAL NETS



BRAIDED SOCCER GOAL NET 4.0MM

WHITE - #NS1-W

BLUE - #NS1-BLUE

ORANGE - #NS1

RED - #NS1-RED

YELLOW - #NS1-Y

- 4mm braided polyethylene net
- Salvaged border
- 24' wide, 8' tall, 10' deep

TWISTED SOCCER GOAL NET 3.0MM

BLUE - #NS3T-BLUE

ORANGE - #NS3T-O

RED - #NS3T-RED

YELLOW - #NS3T-Y

WHITE - #NS3T-W

- 3mm twisted polyethylene net
- 5" mesh
- 24' wide, 8' tall, 10' deep
- Overlocked border finish



BRAIDED SOCCER GOAL NET 4.0MM HEXAGON PATTERN (WHITE ONLY)

#NS2

- 4mm braided polyester hexagonal pattern
- Braided, knotless construction
- 24' wide, 8' tall, 10' deep
- Overlocked border finish

ADVANCED
SPORTS SUPPLY



ITEM#	SIZE	THICKNESS	COLOR	MESH
3B2162	8' X 24' X 3' X 8.5'	3MM	BLACK/WHITE STRIPED	120MM
3B5001	6'7" X 9'10" X 2'8" X 3'4"	3MM	WHITE	4"
3B5301	4' X 6' X 2' X 4'	3MM	WHITE	120MM
3B5501	4.5' X 9' X 2' X 5'	3MM	WHITE	120MM
3B5721	6.5' X 18.5' X 2' X 6'	3MM	WHITE	120MM
3B5921	8' X 24' X 3' X 5'	3MM	WHITE	120MM
3B6823	6.5' X 12' X 2' X 7.5'	3MM	WHITE	3.5"
3B6824	6.5' X 18.5' X 2' X 6.5'	3MM	WHITE	3.5"
3B6825	7' X 21' X 3' X 8'	3MM	WHITE	3.5"
3B6826	8' X 24' X 3' X 9'	3MM	WHITE	3.5"
3B7226	8' X 24' X 0' X 8'	2.4MM	WHITE	120MM

More sizes available!
 Call us today 812-556-2036!

ADVANCED
SPORTS SUPPLY

OFFICIAL CORNER FLAG (SET OF 4)

#A199

- Steel peg for easy ground insertion
- 1" Diameter pole
- 60" height
- Set of 4



REPLACEMENT FLAGS (SET OF 4)

#A197RSE

- Flags only



DELUXE OFFICIAL CORNER FLAG (SET OF 4)

#A197

- Steel peg base with spring
- 1" Diameter pole
- 60" height
- Set of 4

CORNER FLAGS WITH RUBBER BASES

1/2" Pole w/ Spring - #A193RB

1" Pole - #A197RB

- 60" height
- Weight of base is 2.5lbs
- Black, high-density, durable rubber base
- Ideal for turf
- Indoor/outdoor use



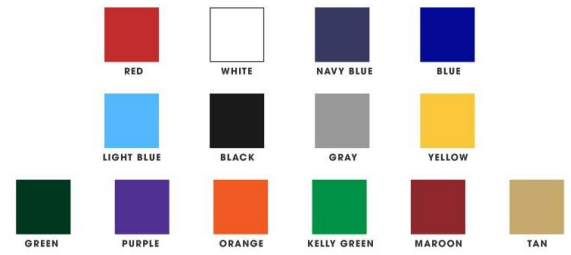
A197RB



**A193SB
SPRING LOADED BASE**



CLUB SHELTER
COVER OPTIONS



CLUB SHELTER

15' - #9B6305

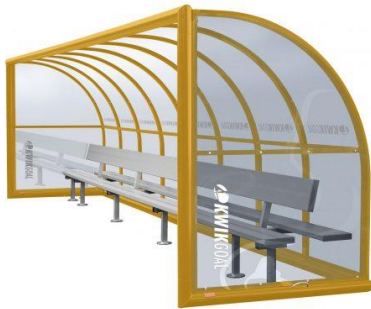
24' - #9B6308

The Club Shelter is the perfect seating solution for clubs and schools. With swivel wheels permanently mounted to its frame, this shelter was designed with effortless portability in mind. The vinyl-coated polyester cover is attached to the front of the frame with uniquely designed clips, while the base and sides are attached to the frame with bungees to ensure a proper fit. Choose from a variety of available stock colors or select a specific RAL color to match your Club Shelter's frame to your organization's color scheme. The vinyl-coated polyester cover is available in stock gray, with an additional 13 colors available upon request. Note: seating products are not included

Windows can be added as an additional feature for our Club Shelter to increase airflow and keep the heat down during the hot summer months, if you need to shut the vented panel simply roll down the cover and keep your team safe from the elements outside.

Customization is available not only on the panel cover but on the vented panel as well to create 8 total areas to add your team's logo or branding.

ADVANCED
SPORTS SUPPLY



CUSTOM SHELTER

#9B5

Custom shelters from Kwik Goal offer a wide range of options to fit your team and club needs.

Rows options – 1 row, 2 rows

Size options – 30', 24', 21', 18', 15', 12', 9'

Seating options – Bench, Molded Seats, Luxury Seating

Color options – Yellow, Black, Blue, Green, Red, White

Call us today to discuss
your custom shelter needs!
812-556-2036



PLAYER BENCHES

WITH BACK

21' - #9B25

15' - #9B22

6' - #9B21

WITHOUT BACK

21' - #9B26

15' - #9B24

6' - #9B23

- All Aluminum
- Planks clear anodized; Frames and braces mill finish

6 SEAT KWIK BENCH

BLUE - #9B9064

BLACK - #9B906

RED - #9B9061

From tournaments to training sessions, the 6-Seat Kwik Bench is an absolute necessity for on-the-go seating. It features connected, nylon seats and a sturdy, collapsible steel frame. For extremely easy transportation and storage, the 6-Seat Kwik Bench includes a rugged, woven-fabric carry bag. This bench is available in red, blue and black.



PORTABLE SHOE DRYER

#30B0801

- Antibacterial UV light
- Compact design travels easily
- UL plug for typical 120V/60Hz household outlet

SHOE DRYER

#30B0901

- Cord length: 63"
- Odor fighting ozone setting
- Control pane with LCD display and timer
- UL plug for typical 120V/60Hz household outlet (100 W)
- Includes unit base and 2 each vent tubes



COACH'S SEAT

#9B901

- Collapsible, steel frame
- Single-seat
- Lightweight
- Portable
- Durable, woven-fabric seat
- Carry bag included



INFINITY POP-UP GOAL

Non-weighted, Round, 6' BLUE - #2B71L

Non-weighted, Round, 4' RED - #2B71M

Non-weighted, Square, 4' RED - #2B7304

Weighted, Square, 4' RED - #2B7404P

With the simple action of crossing and uncrossing your arms, the Infinity Pop-up Soccer Goals can be ready for play or get packed away. Infinity goals are ideal for small-sided training or simple backyard play. These goals includes a Polyester travel bag, Nylon pegs (for anchoring on grass surfaces), Elastic anchor tethers and Velcro fasteners (to hold goal in folded position).

Includes:

- Polyester carry bag
- Elastic anchor tethers
- Nylon pegs (10B1301)
- Velcro fasteners to hold in folded position



KWIK FLEX™ LITE GOALS

6.5' x 12' - #2B1505

4' x 6' - #2B1503

3' x 5' - #2B1502

The KWIK FLEX™ Lite line includes 4 different sizes. The goals are constructed with a fiberglass and metal material, making them durable yet lightweight. No tools are needed for set up or teardown. This line features similar higher-quality as our regular KWIK FLEX™ goals but offers a more budget-friendly option for coaches and players.



FOLDING MAGNETIC BOARD

18" x 24" - #18B502

24" x 36" - #18B503

- carry bag
- 2 markers
- Eraser
- 27 magnets



SOCCER MAGNETIC CLIPBOARD

#MB-2

- Player magnets
- Training Session Planner
- Vinyl magnetic folder



SOCCER CLIPBOARD

#18B301

- Includes a Dry Erase Pen



AURORA THERMAL BONDED SOCCER BALL "1800"

- Size 4 OPTIC BLUE - #SB1804OB
- Size 5 OPTIC BLUE - #SB1805OB
- Size 4 OPTIC ORANGE - #SB1804
- Size 5 OPTIC ORANGE - #SB1805



- Ideal for high school and college games
- Thermal-bonded PU cover
- 3.00mm TPE backing
- Nylon and polyester winding
- Butyl bladder
- Size 5 is NFHS approved



BRINE PHANTOM X SOCCER BALL

- Size 5 BLACK - #1397721B
- Size 5 ROYAL BLUE - #1397721RB
- Size 5 RED - #1397721R



- High retention latex bladder system
- Ultra abrasion-resistant PU cover with texture
- Hand-stitched
- NFHS approved



WILSON NCAA VIVIDO SOCCER BALL

- Size 5 WHITE - #WS1000901XB05
- Size 5 OPTIC YELLOW - #WS1000902XB05



- 20-unique panel design
- Micro-texture surface
- Performance hybrid material
- Visual spin technology
- NFHS, NCAA, and FIFA approved



3STAR INDOOR BALL

- Size 4 - #3STAR4
- Size 5 - #3STAR5

- Custom hand-stitched suede cover for exceptional softness during game play
- 2-Ply butyl bladder for exceptional air retention and durability during regular use in indoor and outdoor conditions
- 32 hand-sewn panels for added quality and durability
- Indoor official size and weight
- Yellow/Black

FUTSAL BALL

#SBF

- Machine stitched TPU cover with EVA backing for soft feel without sacrificing weight
- Butyl bladder for added air retention
- Size: 62cm circumference
- Ideal for Futsal match play or training





WILSON GST LEATHER

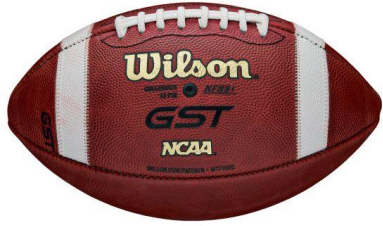


Official Size TAN - #3F1003

Official Size RED- #1167931

Official Size TAN, BLEM - #1167939

- GST is the softest leather football on the market, with a unique feel and distinct light brown color. The ball is also easier to control thanks to a high level of tack.
- Patented sewn-on stripes are composite material instead of paint and provides 82% more grip to aid release for more accurate throws.
- Official size is NFHS Approved



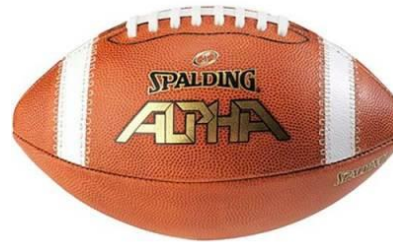
NIKE VAPOR ONE 2.0

Official Size - #1454495

Youth, 12-14 - #1454496

Junior, 9-12 - #1454497

- Custom crafted premium tacky leather
- Innovative stitched-in TEXTURED half-strip
- Official Size is NFHS approved



SPALDING ALPHA

Official Size - #WC726758

Youth, 12-14 - #WC726748

- Horween® "S" tack leather cover with two-ply TPU bladder
- Boxed sewn strip and raised diamond lace
- Official size is NFHS approved

WILSON GST PRIME



Official Size - #WLWTF1103IB

- Extra grip-point stitching for more accurate passing
- Sewn-on stripe and composite pebbled laces for added control
- Prep gauge signifies when ball is fully broken-in for game play
- NFHS and NCAA approved



Other models are available!
We can get what you need!





1" HEAVY RUBBER KICKOFF TEE

#A100S

- 1" heavy rubber kickoff tee
- Made with high-visibility orange PVC
- Non-slip texture on top of tee provides ball grip
- Injection molded construction for use in all conditions

HEAVY BLACK FIELD GOAL TEE

1" - #A101S

2" - #A101

- Durable ridges on bottom of tee prevent slippage
- Waffle texture on top of tee provides ball grip
- Injection molded construction for use in all conditions



FOOTBALL KICKING HOLDER

#FHK

- Allows players to practice kicking like the pros on their own time
- Heavy-duty enameled steel base can stand up to regular use both indoors and outdoors
- Flexible rubber tube holds the tip of the ball in the desired position

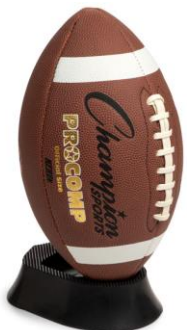


GROUND ZERO® KICKOFF TEE

1" - #GZ1

2" - #GZ2

- Authentic Ground Zero® kickoff tee
- Most popular tee in college football and professional play
- Textured top surface grips ball securely
- Forward rectangular recess holds the ball in ideal angle for kicking
- Black
- Ball not included



PRO DOWN VARSITY KICKING CAGE

Complete Unit - #1052480

Replacement Net - #1052473

Carry Bag - #1363685

- 1.5 in., 17-gauge, galvanized steel frame offers a heavy-duty design that withstands kick after kick
- Kicking cage captures punts and kicks for players to warm up with on the sidelines during a game or during practice
- Bright yellow sides resemble field goal posts for heightened and familiar visual reference
- Measures 41 in. x 41 in. x 82 in. for a compact footprint on the edge of the playing field
- Can be assembled and disassembled easily for storage and portability

PRO DOWN RUNNING ROPES

Complete Unit - #1201987

Replacement Grid - #1201994

- 17-gauge powder-coated tubular steel frame withstands heavy use
- Bright yellow grid makes it easy to identify where feet should be placed
- Frame doesn't obstruct movement across the path
- Grid adjusts from 6 in. up to 15 in. tall to meet the varying needs of training athletes
- Nylon netting offers a 14 ft. 10 in. x 3 ft. 3 in. grid for stepping



VARSITY LINEMAN CHUTE

#FBVCHUTE

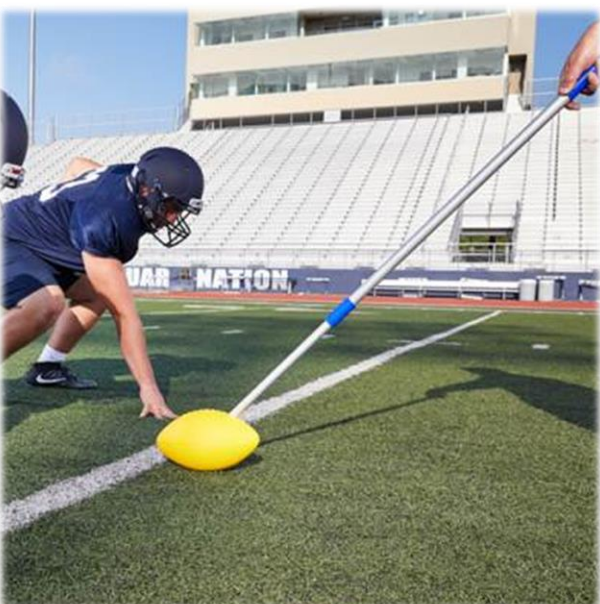
- Heavy-duty steel construction provides teams with reliable practice equipment
- Used to position linemen into the proper form for drive blocks
- Framework encourages athletes to stay low, elevate their hips and find their balance as they move forward
- Equipped for additional chutes for a multi-player lineup



SNAPPER STICK

#1299939

- Lightweight, durable aluminum pole enables easy maneuvering
- Special teams coaches can stand rather than kneel for a clear view and reduced back strain
- Sturdy foam football is bright yellow for enhanced visibility
- Telescoping design extends from 30 - 60 in. to allow the coach to stand in different positions
- Trains offensive linemen to react quickly to the snap





PRO DOWN COLLEGIATE SHIELD

#200232812

- 2 reinforced handles
- 16"W x 26"L - 4 lbs.
- BLACK



PRO DOWN SQUARE BLOCKING DUMMY

#200235012

- 2 reinforced handles
- 14"W x 50"L - 15 lbs.
- BLACK



PRO DOWN MAN SHIELD

Royal - #1384302

Black - #1384303

- 4 reinforced handles
- 22"W x 26"L - 5 lbs.



PRO DOWN FOREARM SHIVER PADS

#200232412

- 24"W x 11"L x 3"T
- BLACK



PRO DOWN STEP-OVER DUMMY

17"B X 8"H X 51"L, 10lbs - #200230812

17"B X 12"H X 51"L, 20lbs - #200231212

- BLACK



Other shapes, styles, and models are available! We can get what you need! Call us at 812-556-2036!

ADVANCED SPORTS SUPPLY

PRO DOWN VARSITY M-SERIES BLOCKING SLED

2-Man - #1378632

3-Man - #1378633

4-Man - #1378634

5-Man - #1378635

6-Man - #1378636

7-Man - #1378637

Optional Coach Platform - #1362618

- All steel powder coated frame construction
- Modular frame construction allows for convenient expansion or removal of a man when needed
- Features 52" splits
- Super-Duty flat leaf springs absorb initial shock and recoils with equal force
- Round tubular steel "all surface" skids
- Optional Coaches Platform available
- Comes stock with royal blue pads



PRO DOWN VARSITY M-SERIES 1-MAN SLED

#1271522

- Powdercoat steel frame is durable enough to withstand outdoor use and hits from large players
- Designed to help offensive and defensive football players in physical leagues and programs practice one-on-one blocks
- Super-duty flat-leaf spring mimics real game situations by absorbing the recoil from player blocks and using it to put resistant pressure on the blocker
- Vinyl pads provide a safe and protective surface for players to practice making hits and blocks on life-size opponents
- Tubular steel skids can move on nearly any type of field or turf surface
- Comes stock with royal blue pads



PRO DOWN PYLONS

#MSWPYLON

- Safe foam filler softens potential impacts when players are reaching for the goal line
- Weighted bottom pylons allows the pylons to stand on their own without the need for anchors
- Each pylon measures 18 in. high Includes 4 pylons to mark one end zone



MOLDED WEIGHTED PYLONS

#A104M

- Utilizes shock absorbing optic orange molded foam for maximum durability
- Each pylon weighs 7 lbs. for greater stability
- Measures 4" base x 18"H
- Set of 4



SOLID WEIGHTED YARD MARKERS

#A102S

- 13" x 13" vinyl covered construction with weighted bottom
- Fluorescent orange marker with 10" black numbers on each side
- Sewn-in nylon handles on top for easy portability
- Set includes two of each "G" (Goal) through "40" and one "50"



NON-WEIGHTED YARD MARKERS

#A102

- 13" x 13" PVC covered foam construction, self-supporting markers
- Orange marker with black numbers on each side
- Set includes two of each "G" (Goal) through "40" and one "50"



DELUXE DOWN INDICATOR AND CHAINS

Down Indicator and Bullseye Chain Set - #A103

Bullseye Chain Set - #A103B

Down Indicator - #A103A



DIGITAL DOWN INDICATOR

#A103D

- One button adjusts LED numbers
- Double sided LED digital number display height 14"
- Pole height: 7'5"
- Weight: Under 8lbs
- 10+ hour rechargeable 800mAh polymer lithium battery with battery power light indicator(charging cord included)

LIGHT™ HELMETS



PLAYERS RELY ON THE LS2 BECAUSE IT ALLOWS THEM TO MOVE FASTER AND MORE EFFICIENTLY ON THE FIELD. TRADITIONAL FOOTBALL HELMETS CAN WEIGH UP TO 6 POUNDS, BUT AT JUST 3 POUNDS, THE LS2 MAKES IT EASIER TO MAINTAIN SITUATIONAL AWARENESS AND TRACK THE BALL AND OTHER PLAYERS ON THE FIELD.

THE LS2'S ULTRA STRONG & LIGHT OUTER-SHELL IS FORGED FROM THE SAME TRI-WEAVE COMPOSITE MATERIAL USED BY THE U.S. MILITARY. ITS LIGHTWEIGHT COMPOSITE CONSTRUCTION IS HALF THE WEIGHT OF OTHER HELMETS, WHICH REDUCES THE MASS CARRIED ON THE HEAD AND NECK AND MINIMIZES PLAYER FATIGUE.

BORROWED FROM AEROSPACE TECHNOLOGY ORIGINALLY LICENSED BY NASA, OUR ARMOR FOAM INNER-LINING IS ENGINEERED TO ABSORB IMPACT, RATHER THAN SIMPLY REDIRECTING IT. UNLIKE OTHER HELMETS THAT USE FOAM CUBES, THE INTERIOR OF THE LS2 IS 100% COVERED, MEANING ENERGY CAN DISSIPATE SAFELY & EFFICIENTLY OVER THE ENTIRE LINING OF THE HELMET.

LIGHT FOOTBALL COMPOSITE HELMET

VARSITY COMPOSITE - #LS2-CV

YOUTH COMPOSITE - #LS2-CY

- COMPOSITE SHELL
- ADVANCED MILITARY MATERIALS
- ULTRA-STRONG
- LIGHTWEIGHT
- ARMOR FOAM TECHNOLOGY
- 100% LINED INTERIOR
- ABSORBS IMPACT

LIGHT FOOTBALL POLYCARBONATE HELMET

YOUTH POLYCARBONATE - #LS2-PY

- POLYCARBONATE SHELL
- ADVANCED MILITARY MATERIALS
- ULTRA-STRONG
- LIGHTWEIGHT
- ARMOR FOAM TECHNOLOGY
- 100% LINED INTERIOR
- ABSORBS IMPACT

LIGHT FOOTBALL FACEMASKS

- Lightweight
- Chrome-Moly Steel Tubing Facemask

#SKP1



#P1



#SK1



LIGHT[™]
H E L M E T S



VICTORY, T-REX HURRICANE CHIN STRAP

#VICTORY CHINSTRAP



X1, T-REX HURRICANE CHIN STRAP

#X1 CHINSTRAP

CALL US for more details!
We can get what you need!

ADVANCED
SPORTS SUPPLY

RAZOR RZ7 (SKILL) SHOULDER PADS

#1388367



- Injection Molded Components
- SAS-TEC Impact Zone Protection
- Dynamic R.O.M. Arch Hinge
- Adjustable Protective Channel Pads
- Sternum/Spine Protective Pads
- Moisture Wicking Fabrics
- PAD-LOC Buckle/Strap System
- Compressed HEX Foam Comfort Liner
- Patented Z-Cool (#7,168,104) Plastic Inner Arch Design

SIZE	SM	MED	L	XL	2XL
SHOULDER	16"-17"	17"-18"	18"-19"	19"-20"	20"-21"
CHEST	36"-38"	38"-40"	40"-42"	42"-44"	44"-46"

RAZOR RZ15 (MULTI POSITION) SHOULDER PADS

#1388373



- Injection Molded Components
- SAS-TEC Impact Zone Protection
- Dynamic R.O.M. Arch Hinge
- Adjustable Protective Channel Pads
- Sternum/Spine Protective Pads
- Moisture Wicking Fabrics
- PAD-LOC Buckle/Strap System
- Compressed HEX Foam Comfort Liner
- Patented Z-Cool (#7,168,104) Plastic Inner Arch Design

SIZE	SM	MED	L	XL	2XL
SHOULDER	16"-17"	17"-18"	18"-19"	19"-20"	20"-21"
CHEST	36"-38"	38"-40"	40"-42"	42"-44"	44"-46"

RAZOR RZ55 (OL/DL) SHOULDER PADS

#1388380



- Injection Molded Components
- SAS-TEC Impact Zone Protection
- Dynamic R.O.M. Arch Hinge
- Adjustable Protective Channel Pads
- Sternum/Spine Protective Pads
- Moisture Wicking Fabrics
- PAD-LOC Buckle/Strap System
- Compressed HEX Foam Comfort Liner
- Patented Z-Cool (#7,168,104) Plastic Inner Arch Design

SIZE	MED	L	XL	2XL	3XL
SHOULDER	17"-18"	18"-19"	19"-20"	20"-21"	21"-22"
CHEST	38"-40"	40"-42"	42"-44"	44"-46"	44"-48"

X3 ADULT X7 (SKILL) SHOULDER PADS

#1454175



- Light weight low profile flat pad design for greater mobility
- Built-in back plate
- Recommended for QB/WR/DB or similar Skill positions requiring greater mobility
- Antimicrobial arch fabric
- Compressed Hex Foam delivers first in class moisture management and superior protection
- Vent holes throughout arch offers increased air flow
- Full 180-degree arms up motion
- Integrated Deltoid Pad and fixed cap pad
- Rigid plastic sternum protection
- 1.5" biothane belt with no-snap buckles

SIZE	SM	MED	L	XL
SHOULDER	16"-17"	17"-18"	18"-19"	19"-20"
CHEST	36"-38"	38"-40"	40"-42"	42"-44"

X3 ADULT X15 (MULTI POSITION) SHOULDER PADS

#1454181



- Flat pad design provides optimum combination of protection and mobility for multiple positions
- Short front arch for extended range of motion and extended rear arch for added protection
- Multi-Position pad recommended for RB/DB/TE/DE requiring mobility and added protection
- Antimicrobial arch fabric
- Vent holes throughout arch offers increased air flow
- Full 180-degree arms up motion
- Integrated Deltoid Pad and fixed cap pad
- Rigid plastic sternum protection
- 1.5" biothane belt with no-snap buckles
- Secondary 1.5" elastic belt for more secure fit

SIZE	SM	MED	L	XL	2XL
SHOULDER	16"-17"	17"-18"	18"-19"	19"-20"	20"-21"
CHEST	36"-38"	38"-40"	40"-42"	42"-44"	44"-46"

X3 ADULT X55 (OL/DL) SHOULDER PADS

#1454187



- 1.5" biothane belt with no-snap buckles
- Secondary 1.5" elastic belt for more secure fit
- Antimicrobial arch fabric Vent holes throughout arch offers increased air flow
- Full 180-degree arms up motion
- Integrated Deltoid Pad and fixed cap pad
- Rigid plastic sternum protection
- specially designed for larger players such as OL/DL/DE/TE positions

SIZE	MED	L	XL	2XL	3XL
SHOULDER	17"-18"	18"-19"	19"-20"	20"-21"	21"-22"
CHEST	38"-40"	40"-42"	42"-44"	44"-46"	44"-48"

JV/YOUTH Z-COOL 2.0 SHOULDER PAD

#1454455

- Extremely light weight all position pad
- Z-Cool moisture transfer system and plastic inner arch design
- NEW cosmetic Carbon Fiber updates on external poly components
- Adjustable clavicle pads
- Fixed cap pad system
- AC joint notch-out with AC cradle pads
- Adjustable deltoid pad system
- Rigid plastic sternum protection
- 1.5" belt with no-snag buckles

SIZE	XSM	SM	MED	L	XL	2XL	3XL
SHOULDER	12"-13"	13"-14"	14"-15"	15"-16"	16"-17"	17"-18"	18"-19"
WEIGHT	30-45lbs	40-60lbs	60-80lbs	75-100lbs	95-120lbs	115-140lbs	135-160lbs

JV/YOUTH X3 SHOULDER PAD

#1454463

- For Youth, Middle School or JV
- Perforated arch foam system allows for quick drying
- Low profile flat pad construction with vented arch plastic
- Rigid plastic sternum protection
- AC joint notch-out with cradle pads
- 1.25" Belts with non-cut buckles

SIZE	XSM	SM	MED	L	XL	2XL	3XL
SHOULDER	12"-13"	13"-14"	14"-15"	15"-16"	16"-17"	17"-18"	18"-19"
WEIGHT	30-45lbs	40-60lbs	60-80lbs	75-100lbs	95-120lbs	115-140lbs	135-160lbs

4 STACK SHOULDER PAD RACK

#1378670

- Base with rectangular channel design increases strength and stability
- 4 heavy duty swivel casters for easy movement
- Holds up to 60-80 pads (Depending on pad size)
- Assembled Dimensions - 68"H x 24"W x 60"L
- Weight - 65 lbs.

ADVANCED
SPORTS SUPPLY



5-STAR RATED SH7 SOFT SHELL HELMET

Small - #SSH2BS

Medium - #SSH2BM

Large - #SSH2BL

- Light, breathable headgear for 7 on 7 or other non-tackle football, lined with Champro's exclusive PRS Foam System
- 5 Star rated "Best Available" in Virginia Tech flag football headgear ratings
- Bio-Fresh® anti-microbial treatment guards against deterioration from mold, mildew stains, and bacterial odors
- Sides of helmet have space to print team logos



7-SERIES SOFT SHELL HEADGEAR

Small - #SSHS

Medium - #SSHM

Large - #SSHL

- Lightest, most breathable 7 on 7 helmet on the market!
- Inner lining with Bio-Fresh® antimicrobial & DRI-GEAR® moisture wicking treatment
- Venthholes added in key areas for breathability
- Lace closure system ensures a secure fit
- Sides of helmet left blank for decoration

Size	Hat Size	Head Circumference
S	6 - 6 1/2	19 - 20 1/2
M	6 5/8 - 7 1/4	20 7/8 - 22 3/4
L	7 3/8 - 7 3/4	23 1/8 - 24 1/4

7-SERIES SHOULDER PAD

2XSmall - #FSP7040

XSmall - #FSP7060

Small - #FSP7080

Medium - #FSP7100

Large - #FSP7130

XLarge - #FSP7150

2XLarge - #FSP7180

3XLarge - #FSP7200

- Made with lightweight, impact-reducing EVA foam
- Breathable mesh inner lining
- Perforated shoulder caps provide upper arm protection
- Premium neck collar provides comfort
- Side and under arm straps keep pad locked for a secure fit

Size	Weight	Chest Size
XXS	Under 40 lbs.	22"-24"
XS	40-60 lbs.	24"-26"
S	60-80 lbs.	26"-28"
M	80-110 lbs.	28"-30"
L	130-150 lbs.	32"-34"
XL	130-150 lbs.	32"-34"
2XL	150-180 lbs.	34"-36"
3XL	180-200 lbs.	36"-38"

LIGHT HELMET SOFT SHELL HEADGEAR

#SS1

- Armor Foam technology absorbs impact rather than simply redirecting it
- #1 impact score, Five Star Rating, and Best in class coverage (100% flag football / 96% Soccer) per Virginia Tech
- Vented design keeps players cool
- Closed-cell foam repels dirt, water and sweat
- Comfortable & adjustable fit
- Multi-sport applications: flag football, soccer, 7v7 passing football, no-contact practices, women's lacrosse, women's field hockey and more
- Free mesh drawstring carrying case included with every order





TRI-FLEX COMPRESSION SHIRT WITH CUSHION SYSTEM - WHITE(W), CHARCOAL(B)

- Youth Small - #FJU6Y?S
- Youth Medium - #FJU6Y?M
- Youth Large - #FJU6Y?L
- Small - #FJU6?S
- Medium - #FJU6?M
- Large - #FJU6?L
- XLarge - #FJU6?XL
- 2XLarge - #FJU6?2X
- 3XLarge - #FJU6?3X
- 4XLarge - #FJU6?4X

- The TRI-FLEX cushion system provides the ultimate combination of protection and flexibility
- Grip-Tech dots gives shoulder pads traction and prevents slippage
- High-compression, Polyester/Spandex DRI-GEAR® moisture management fabric



BULL RUSH COMPRESSION SHIRT - WHITE(W), CHARCOAL(GR)

- Youth Small - #FJU10Y?S
- Youth Medium - #FJU10Y?M
- Youth Large - #FJU10Y?L
- Small - #FJU10A?S
- Medium - #FJU10A?M
- Large - #FJU10A?L
- XLarge - #FJU10A?XL
- 2XLarge - #FJU10A?2X
- 3XLarge - #FJU10A?3X
- 4XLarge - #FJU10A?4X

- Poly/spandex, 4-way stretch fabric with high-compression fit
- Low-profile integrated pads provide maximum protection to the rib and shoulders
- Featuring DRI-GEAR® technology
- Tank top cut allows for full range of motion



FORMATION PADDED COMPRESSION SHIRT

- Youth Small - #FJU18YWS
- Youth Medium - #FJU18YWM
- Youth Large - #FJU18YWL
- Small - #FJU18AWS
- Medium - #FJU18AWM
- Large - #FJU18AWL
- XLarge - #FJU18AWXL
- 2XLarge - #FJU18AW2X
- 3XLarge - #FJU18AW3X
- 4XLarge - #FJU18AW4X

- Poly/spandex, 4-way stretch fabric with high-compression fit
- Integrated pads with perforated holes provide maximum protection and breathability
- Tank top cut allows for full range of motion

ADULT APPAREL

	CHEST SIZE	WAIST SIZE
XS	32	26
SMALL	34-36	28-30
MEDIUM	38-40	32-34
LARGE	42-44	36-38
XL	46-48	40-42
2L	50-52	44-46
3XL	54-56	48-50
4XL	58-60	52-54

YOUTH APPAREL

	CHEST SIZE	WAIST SIZE
XXS	22-24	19-21
XS	24-26	21-23
SMALL	26-28	23-25
MEDIUM	28-30	25-27
LARGE	30-32	27-29
XL	32-34	29-31
2XL	34-36	31-33



BULL RUSH 5-PAD GIRDLE - WHITE(W), CHARCOAL(GR)

- Youth Small - #FPGU10Y?S
- Youth Medium - #FPGU10Y?M
- Youth Large - # FPGU10Y?L
- Youth XLarge - # FPGU10Y?XL
- Small - # FPGU10A?S
- Medium - # FPGU10A?M
- Large - # FPGU10A?L
- XLarge - # FPGU10A?XL
- 2XLarge - # FPGU10A?2X
- 3XLarge - # FPGU10A?3X
- 4XLarge - # FPGU10A?4X

- Poly/spandex, 4-way stretch fabric with high-compression fit
- Low-profile integrated pads are flexible and ridged to provide maximum protection to the hips, thighs and knees
- DRI-GEAR® technology
- Girdle includes cup pocket



BULL RUSH 7-PAD GIRDLE - WHITE(W), CHARCOAL(GR)

- Youth Small - #FPGU17Y?S
- Youth Medium - #FPGU17Y?M
- Youth Large - # FPGU17Y?L
- Youth XLarge - # FPGU17Y?XL
- Small - # FPGU17A?S
- Medium - # FPGU17A?M
- Large - # FPGU17A?L
- XLarge - # FPGU17A?XL
- 2XLarge - # FPGU17A?2X
- 3XLarge - # FPGU17A?3X
- 4XLarge - # FPGU17A?4X

- Poly/spandex, 4-way stretch fabric with high-compression fit
- Low-profile integrated pads are flexible and ridged to provide maximum protection to the hips, thighs and knees
- DRI-GEAR® technology
- Girdle includes cup pocket



FOMATION PROTECTIVE COMPRESSION GIRDLE

- Youth Small - #FPGU28YWS
- Youth Medium - #FPGU28YWM
- Youth Large - #FPGU28YWL
- Small - #FPGU28AWS
- Medium - #FPGU28AWM
- Large - #FPGU28AWL
- XLarge - #FPGU28AWXL
- 2XLarge - #FPGU28AW2X
- 3XLarge - #FPGU28AW3X
- 4XLarge - #FPGU28AW4X

- Poly/spandex, 4-way stretch fabric with high-compression fit
- Integrated pads with perforated holes provide maximum protection and breathability
- 2" jaquard elastic waistband includes cup pocket

ADULT APPAREL

	CHEST SIZE	WAIST SIZE
XS	32	26
SMALL	34-36	28-30
MEDIUM	38-40	32-34
LARGE	42-44	36-38
XL	46-48	40-42
2L	50-52	44-46
3XL	54-56	48-50
4XL	58-60	52-54

YOUTH APPAREL

	CHEST SIZE	WAIST SIZE
XXS	22-24	19-21
XS	24-26	21-23
SMALL	26-28	23-25
MEDIUM	28-30	25-27
LARGE	30-32	27-29
XL	32-34	29-31
2XL	34-36	31-33



FOOTBALL FLAG BELT - 1 DOZEN

Gold- #A105DZGO

Kelly Green - #A105DZKG

Royal Blue- #A105DXRY

Scarlet - #A105DZSC

- Each belt includes two regulation flags
- Flags slide to allow distance to be adjusted
- Flags attach with hook and loop fasteners
- Adjustable 45" length web belt



GOLD



KELLY GREEN



ROYAL



SCARLET



QUICK-DOWN "POP" FLAG BELT

Gold- #A108GO

Royal Blue- #A108RY

Scarlet - #A108SC

- Belt "pops" when a flag is pulled
- Individual belt includes three regulation flags
- Web belt adjusts up to 50"
- Flags slide to allow distance to be adjusted



GOLD



ROYAL



SCARLET

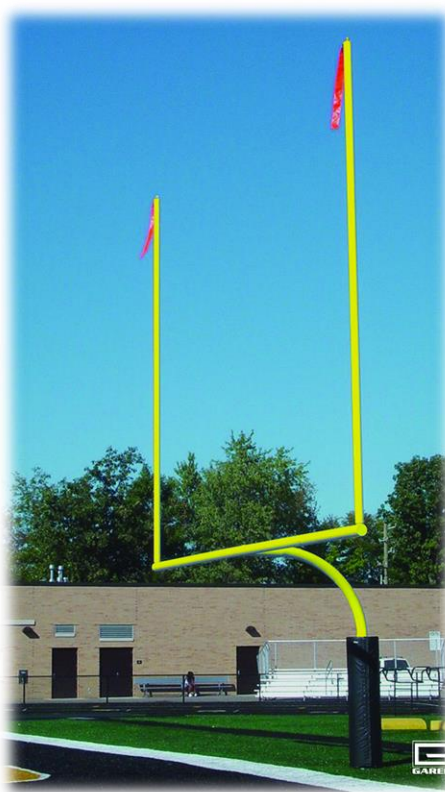
7 ON 7 YARD MARKERS

#A102F

- 13" x 13" PVC covered foam construction, self-supporting markers
- Orange marker with black numbers on each side
- Ser includes 2 pieces of "G" and "20", and one "40"
- Ideal for 7 on 7 football or flag football



Other options are available! We can get what you need!



HIGH SCHOOL FOOTBALL GOALPOST

- 4 1/2" O.D. PERMANENT/SLEEVE

WHITE - #FGHS45IGW

YELLOW - #FGHS45IGY

GROUND SLEEVES - #FGP400GS

- 4 1/2" O.D. SURFACE-MOUNT

WHITE - #FGHS45SMW

YELLOW - #FGHS45SMY

- 5 9/16" O.D. PERMANENT/SLEEVE

WHITE - #FGHS606IGW

YELLOW - #FGHS606IGY

GROUND SLEEVES - #FGP600GS

- 5 9/16" O.D. SURFACE-MOUNT

WHITE - #FGHS606SMW

YELLOW - #FGHS606SMY

- 23' 4" wide crossbars meet official specifications for high school play
- The offset allows multiple sports to share the field.



COLLEGE FOOTBALL GOALPOST

- 5 9/16" O.D. PERMANENT/SLEEVE

WHITE - #FGC606IGW

YELLOW - #FGC606IGY

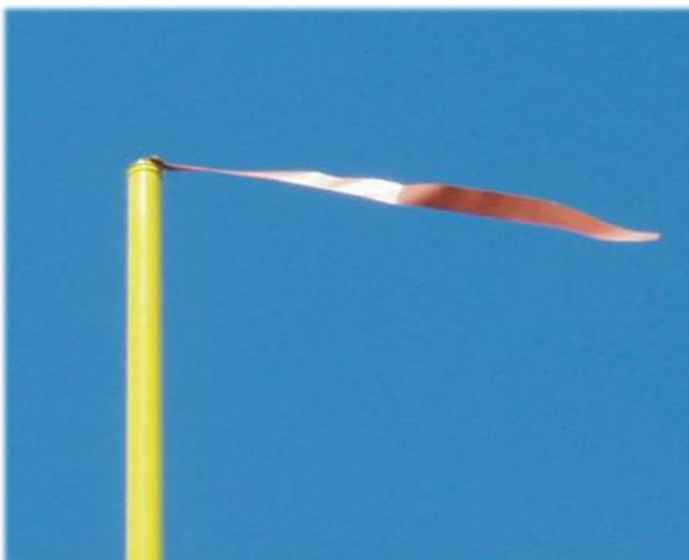
GROUND SLEEVES - #FGP600GS

- 5 9/16" O.D. SURFACE-MOUNT

WHITE - #FGC606SMW

YELLOW - #FGC606SMY

- 18' 6" wide crossbars meet official specifications for collegiate play



WIND DIRECTION FLAGS (SET OF 4)

#1197747DS

- High visible Orange color
- Set of (4)

SPORTS COOL PORTABLE COOLING SYSTEM

#1240405

- Portable cooling systems for sports and recreation
- Fits in the back of a school bus, trailer, truck or van
- Easy to operate! Requires 115V electrical outlet
- Powder coated steel frame. 20-gallon FDA, NSF approved tank. 24" fan, 8550 CFM cools up to 75' away, no water hose needed
- Warranty - Fan: (2) Two Years; Pumps: (1) One Year, Parts: (1) One Year, Frame: (5) Five Years



POWER TANKER WITH CART

#1378677

- Powder coated steel frame and aluminum deck
- Retractable, non-corrosive PVC drinking tubes with a coiled design deliver safe and clean drinking water to players
- 35-gallon tank and eight drinking stations let the entire team quickly quench their thirst, and an
- Aluminum utility shelf
- Four 10 in. pneumatic tires
- Adjustable shut-offs are powered by a 12-volt, 12-amp rechargeable battery that runs for up to eight hours on a single charge



GAME DAY HYDRATION PACKAGE

#1371360

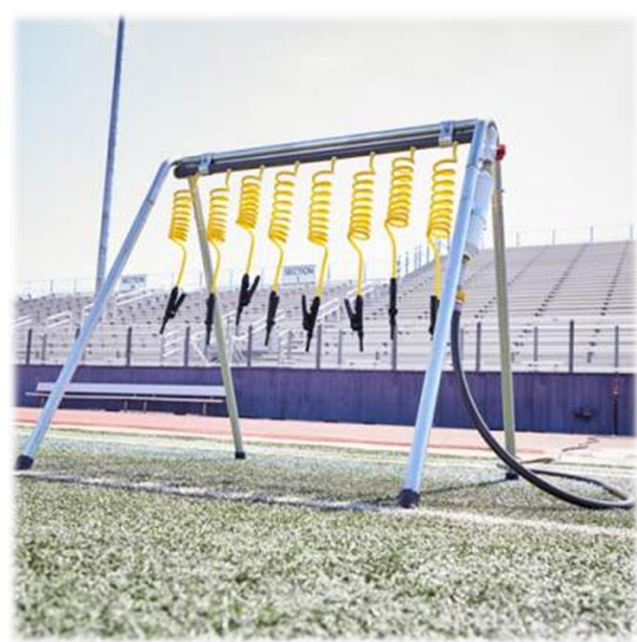
- The perfect solution for keeping athletes cool, hydrated and ready for peak performance on game day
- Package includes: 2 - Portable Mister Cooling Systems (1240405) and 1 - Power Tanker with Cart (1378677)



SPORTS COOL DRINKING STATION WITH FILTER

#1453185

- Galvanized steel tubing frame with removable legs for easy transport and storage
- Drinking tube is made of non-corrosive PVC
- In-line filter for cleaner fresher water
- Includes 8 drinking stations with shut-off nozzles
- Connects to a standard water hose (not included)
- Dimensions: 43"H x 53"L - 25 lbs



SPORTS COOL POWERED TEAM DRINKER

#1240412

- Powder coated steel cart withstands rain, snow and sunshine for all-weather use
- Six retractable-coil drinking hoses with quick shut-off nozzles promote efficient hydration
- 20-gallon FDA, NSF approved tank with an extra-wide threaded top allows quick, easy refilling
- No-flat tires offer simple transportation over a variety of field and court surfaces, so the cart moves to follow the team
- Included trickle charger and sanitizing tablets deliver clean water and lasting performance



PRACTICE HYDRATION PACKAGE

#1371361

- Hydrate more players faster, so more time can be spent practicing, with 20 total drinking stations
- Package includes: 2 - Powered Team Drinkers (1240412) and 1 - Drinking Station (1453185)





SPALDING TF-1000 LEGACY

Official Size 29.5" - #768131

Intermediate Size 28.5" - #768141

- NFHS APPROVED: Official high school ball in NY, CT, ME, PA, TX, IA, KS, KY, MA, MO, MN, RI, VT, WI, WV, N Central CIF, SC
- Micorfiber composite leather
- Deep channel design for superior control



HEAVY DUTY BALL CART W/ CASTERS

#CART315

- 1" powder-coated square steel tubing & 4 heavy duty rotating casters
- Black finish
- Holds 15 balls
- Easy to assemble
- 49"L x 16"W x 35"H



SPALDING TF-1000 PRECISION

Official Size 29.5" - #768158

Intermediate Size 28.5" - #768168

- NFHS APPROVED: Official high school ball in MD and ID
- Micorfiber composite leather
- Deep channel design for superior control

WILSON EVOLUTION

Official Size 29.5" - #WTB0516

Intermediate Size 28.5" - #WTB0586

- #1 Indoor Ball
- NFHS APPROVED
- Micorfiber composite leather
- Patented Aqua Grip laid in channels
- Patented cushion core technology



HEAVY DUTY BALL LOCKER

#BLOCKS

- 1" powder-coated square steel tubing
- Black finish
- Lockable hinged lid (lock not included)
- Easy to assemble
- Holds 28-30 basketballs
- 47"L x 24"W x 38"H



10" DUAL ACTION PUMP W/ GAUGE

#A146

- Durable aluminum cylinder
- Gauge measures air pressure during inflation



NEEDLES (3 pack)

#A145B



GARED ALL PRO JAM ADJUSTABLE

#GP12A72DM

- Recommended Play Level: NIRSA, Recreation, Youth
- Premium adjustable basketball system is a popular choice for residential use, playgrounds, and recreational play environments
- Includes 6" x 8" post, BB72A38 acrylic board, and 2000+ breakaway rim
- Actuator mechanism allows easy adjustment from 7' to 10' rim height



GARED PRO JAM ADJUSTABLE

#GP10A72DM

- Recommended Play Level: NIRSA, Recreation, Youth
- Premium adjustable basketball system is a popular choice for residential use, playgrounds, and recreational play environments
- Includes 6" square post, BB72A38 acrylic board, and 2000+ breakaway rim
- Actuator mechanism allows easy adjustment from 7' to 10' rim height



GARED COLLEGIATE JAM ADJUSTABLE

#GP8A60DM

- Recommended Play Level: NIRSA, Recreation, Youth
- Premium adjustable basketball system is a popular choice for residential use, playgrounds, and recreational play environments
- Includes 5" square post, BB60A38 acrylic board, and 1000 breakaway rim
- Actuator mechanism allows easy adjustment from 7' to 10' rim height



SQUARE POST PADDING

5" Post - #PP5SQF

6" Post - #PP6SQF

The Fitted Post Pad protects players from injury due to contact with basketball, volleyball, tetherball, or other game poles. Features mitered corners to fit snugly on the post without spinning and has Velcro strips for closure. Constructed of 2" foam covered in UV-resistant vinyl for maximum protection and long life. Available in BLACK only.

**Other options are
available! We can get what
you need!**



ECONOMY 3-1/2" O.D. REAR-MOUNT GOOSENECK PACKAGE

#PK3545

Maximize physical education and park budgets with a commercial grade PK3545 playground basketball system. This package features a 3-1/2" O.D. rear-mount gooseneck post with 36" safe play area, fan-shape rear-mount white steel backboard, and economy fixed single rear-mount rim.

- Recommended Play Level: NIRSA, Recreation, Youth
- Package includes GN35R post, 1266 board, and 66T rim



STANDARD DUTY 4-1/2" O.D. GOOSENECK PACKAGE

#PK4560

Designed for schoolyards, municipal parks, and recreation facilities, the PK4560 standard-duty gooseneck playground system perfectly completes outdoor basketball courts. This package features a 4-1/2" O.D. gooseneck post with 48" safe play area, 42" x 60" marked steel backboard, and fixed double rim.

- Package includes GN45 post, 1260B board, and 240 rim



STANDARD DUTY 4-1/2" O.D. REAR-MOUNT GOOSENECK PACKAGE

#PK4570

Designed for schoolyards, municipal parks, and recreation facilities, the PK4570 standard-duty gooseneck playground system perfectly completes outdoor basketball courts. This package features a 4-1/2" O.D. rear-mount gooseneck post with 48" safe play area, fan-shape marked rear-mount backboard, and fixed double rear-mount rim.

- Package includes GN45R post, 1266B board, and 266 rim



DUAL POST REAR-BRACED FRONT-FOLDING CEILING HUNG

#2203

Customized to a facility building design, the ceiling hung backstop features direct goal attachment for optimal backboard strength and performance. Approved for competition play, the 2203 steel welded structure provides maximum clearance for facilities with ceilings heights between 18' and 31'.

- Dual post rear-braced front-folding unit provides ultimate stability with maximum clearance over the court
- Fully welded frame for heights up to 24'



DUAL POST REAR-BRACED STATIONARY CEILING HUNG

#2211

Customized to a facility building design, the 2211 ceiling hung backstop features direct goal attachment for optimal backboard strength and performance.

- Dual post rear-braced stationary unit for courts more than 14' from a wall
- Fully welded frame for ceiling heights up to 24'



DUAL POST REAR-BRACED REAR-FOLDING CEILING HUNG

#2205

Customized to a facility building design, the 2205 ceiling hung backstop features direct goal attachment for optimal backboard strength and performance. Approved for competition play, the 2205 steel welded structure provides maximum clearance for facilities with ceilings heights between 18' and 24' with rear court storage.

- Dual post rear-braced rear-folding unit for areas with minimum clearance over the court
- Fully welded frame for ceiling heights up to 24'



SINGLE POST REAR-BRACED ROLL-FOLD CEILING HUNG

#3304

Customized to a facility building design, the ceiling hung backstop features direct goal attachment for optimal backboard strength and performance. Approved for competition play, the 3304 steel clamped structure provides maximum clearance for facilities with ceilings above 32' with rear court storage.

- Straight post rear-braced front-folding unit is track-mounted with compact folding for areas with limited space to fold up in front and rear of backstop
- Bolt-together frame for ceiling heights 32' and above

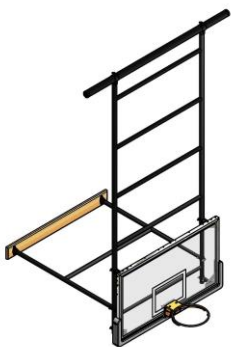


DUAL POST WALL-BRACED STATIONARY CEILING HUNG

#2215

Customized to a facility building design, the ceiling hung backstop features direct goal attachment for optimal backboard strength and performance. Approved for competition play, the 2215 steel clamped non-folding structure provides maximum clearance for facilities with ceilings heights between 18' and 24' allowing up to 14' from face of backboard.

- Dual post wall-braced stationary unit for courts within 14' of wall
- Fully welded frame for ceiling heights up to 24'



DUAL POST WALL-BRACED STATIONARY CEILING HUNG

#2615

Customized to a facility building design, the ceiling hung backstop features direct goal attachment for optimal backboard strength and performance. Approved for competition play, the 2615 steel clamped non-folding structure provides maximum clearance for facilities with ceilings heights between 24' and 32', allowing up to 14' to face of backboard.

- Dual post wall-braced stationary unit for courts within 14' of wall
- Bolt-together frame for ceiling heights from 24' to 32'



SINGLE POST WALL-BRACED STATIONARY CEILING HUNG

#3114

Customized to a facility building design, the ceiling hung backstop features direct goal attachment for optimal backboard strength and performance. Approved for competition play, the 3114 steel clamped non-folding structure provides maximum clearance for facilities with ceilings above 32', allowing up to 14' to face of backboard.

- Straight post wall-braced stationary unit for courts within 14' of wall and wall will not support a wall mount unit
- Bolt-together frame for ceiling heights from 32' to 36'



SINGLE POST REAR-BRACED STATIONARY CEILING HUNG

#3110

Customized to a facility building design, the ceiling hung backstop features direct goal attachment for optimal backboard strength and performance. Approved for competition play, the 3110 steel clamped structure provides maximum clearance for facilities with ceilings above 32' without wall attachment options.

- Straight post rear-braced stationary unit for courts more than 14' from a wall and wall will not support a wall mount unit
- Bolt-together frame for ceiling heights from 32' to 36'



Other options are available! We can get what you need!



JUNIOR JAMMER MULTI-HEIGHT YOUTH BACKBOARD ADAPTER

#JJ5A

The JJ5A Junior Jammer is designed to allow younger players to play on competition systems by lowering the goal to 5 different fixed youth heights. Adapter includes a fiberglass board which is securely attached to existing goal, and a fixed stationary rim.



REBOUNDING SKILL RING TRAINER

#RB

The RB Rebound Ring is designed to develop rebounding skills by allowing the ball to fall through only on a perfect shot. Reduces goal from standard 18" to 10-1/2". The ring attaches to any 18" goal and is powder coated orange for maximum durability.



VARSITY TOSS BACK TRAINING AID

#VARSITY

The Varsity Toss Back® is recognized as the best basketball training aid and skill development tool available. The Varsity can dramatically improve a player's quickness, strength, stamina, and passing accuracy, and some of the best basketball programs in the country own as many as 14 Toss Backs® for individual player workouts. Net frame adjusts to varying angles for different types of practice drills. Net frame is 38" x 51", and height can be adjusted from 4' 5" to 7' 4". The roll-around base uses casters for easy mobility and stability. Unit easily locks into place using a hand lever brake.



SHOOTING RING TRAINER

#PR

The PR Practice Ring reduces the size of the basketball goal to help improve shooting accuracy. Reduces goal from standard 18" to 17". Attaches to any 18" rim. Goal attaches to any 18" rim and is powdercoated orange for maximum durability.

ELECTRIC HOIST W/ KEY SWITCH

#1194

The 1194 Electric Hoist is the most convenient way to raise and lower your gymnasium equipment. Designed for ceiling-hung basketball backstops and fold-up wall-mounted systems.





PROFESSIONAL PRO-MOLD® BACKBOARD PADDING

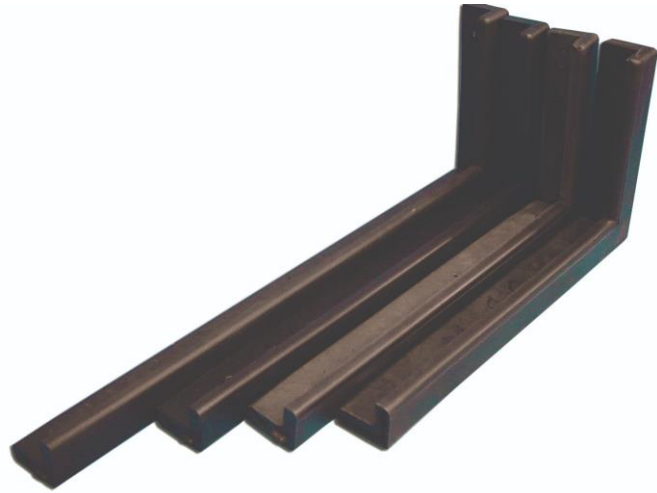
#PMCE-COLOR?

Safeguard your players with our PMCE PRO-MOLD® bolt-on basketball backboard padding. Pads will universally fit any 72" backboard with a 2" channel. One pad kit protects one backboard. Offered in an array of 16 vibrant colors.

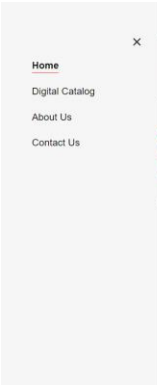


RECREATIONAL PRO-MOLD® OUTDOOR BACKBOARD PADDING

- 48" - #LSCE48**
- 54" - #LSCE54**
- 60" - #LSCE60**
- 72" - #LSCE72**



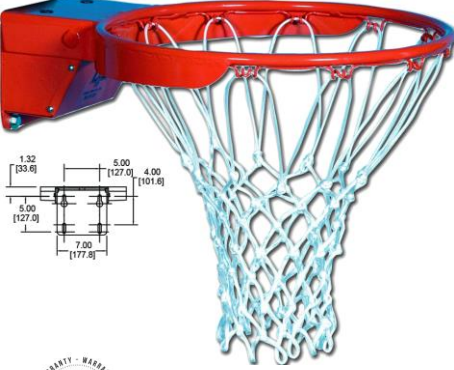
The LSCE recreational PRO-MOLD basketball backboard padding provides protection to decrease risk of player head injury. Durable polyurethane foam is designed for long life in heavy play settings and resistance to weather elements. Bolts to metal framing using self-tapping screws on outdoor rectangular glass and acrylic backboards.



2022 Catalog



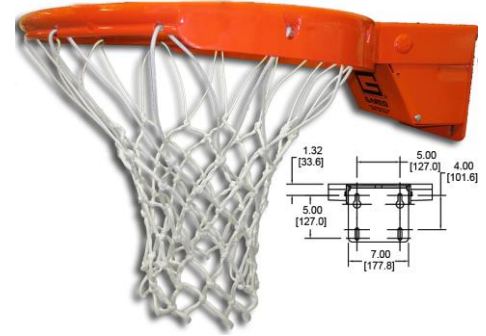
Check us out online at advancedsportssupply.com or call 812-556-2036!



SCHOLASTIC FLEX BREAKAWAY RIM

#1000

- Recommended Play Level: NAIA, NIRSA, Recreation, Youth
- Top quality flex goal without a positive lock mechanism
- No-Tie net attachments
- Anti-whip net and hardware included



COLLEGIATE PREMIUM BREAKAWAY RIM

#2500

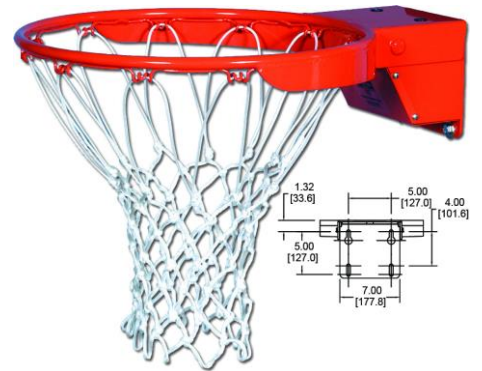
- Recommended Play Level: NCAA, NFHS, AAU, NAIA, NIRSA
- Same superior quality as our 2000+, but includes a tube-tie net attachment to prevent hand injury
- Anti-whip net, hardware, and tie cable included



COLLEGIATE 2000+ PREMIUM BREAKAWAY RIM

#2000+

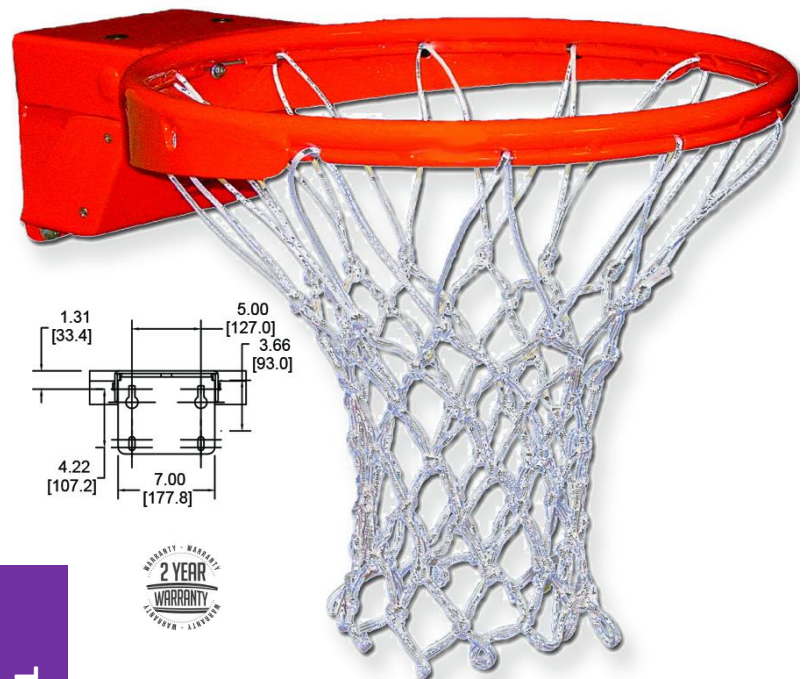
- Recommended Play Level: NCAA, NFHS, AAU, NAIA, NIRSA
- Best selling positive lock breakaway rim designed for competition play environments
- No-Tie net attachments
- Anti-whip net and hardware included



MASTER 3000 PROFESSIONAL BREAKAWAY RIM

#3000

- Recommended Play Level: NBA, NCAA, AAU, IOC
- Premium breakaway rim set to break at 160 lbs of pressure
- No-Tie net attachments
- Anti-whip net and hardware included

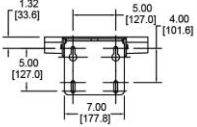
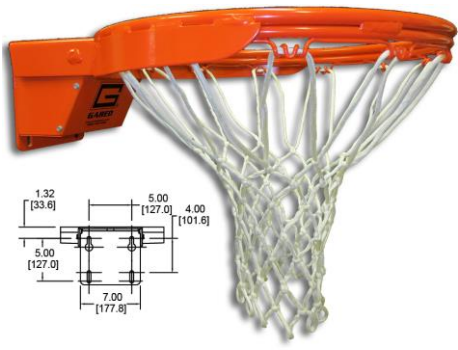


MASTER PROFESSIONAL BREAKAWAY RIM

#3500

- Recommended Play Level: NBA, NCAA, AAU, IOC
- Designed with a tube tie net attachment to lower risk of hand injury
- Anti-whip net, hardware, and tie cable included





PLAYGROUND DOUBLE RING BREAKAWAY RIM

#5500

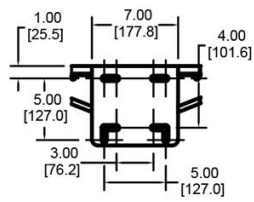
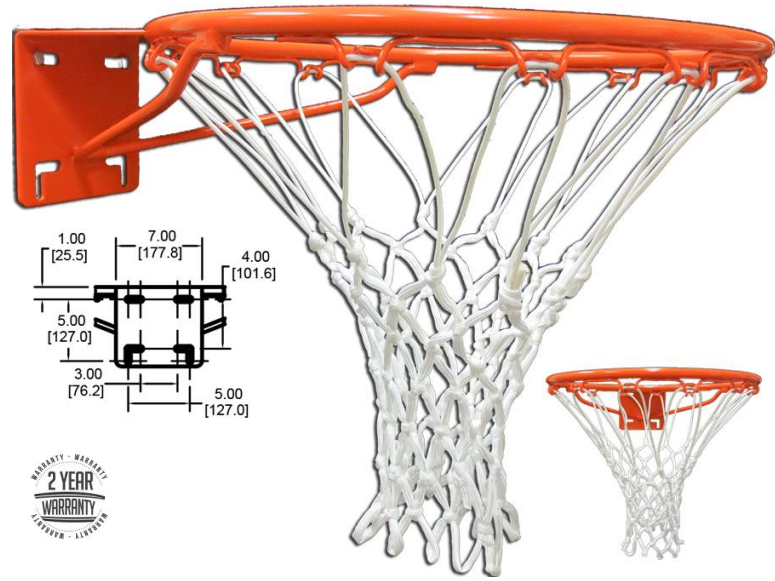
- Recommended Play Level: NIRSA, Recreation, Youth
- Durable double rim breakaway goal for playground environments
- Anti-whip net and hardware included



ENDURANCE SLAM BREAKAWAY RIM

#8800

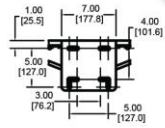
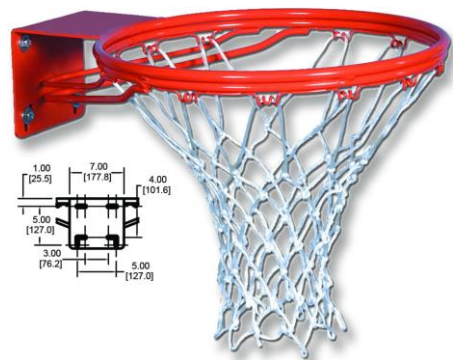
- Recommended Play Level: NIRSA, Recreation, Youth
- Beefy double rim, continuous wing brace = strongest double rimmed goal in the industry
- T-style net attachment lowers risk of hand injury and increases net security
- Anti-whip net and hardware included



INSTITUTIONAL FIXED RIM

#39WO

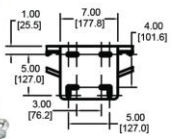
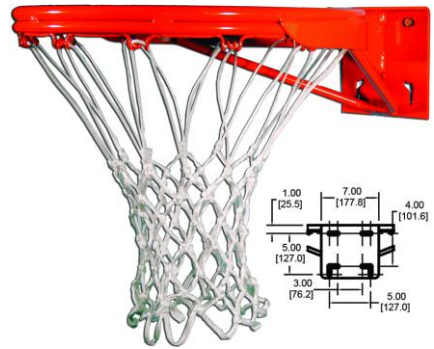
- Recommended Play Level: NIRSA, Recreation, Youth
- Our best-selling economical goal for indoor and outdoor use
- GGN net and hardware included



SUPER GOAL FIXED RIM

#240

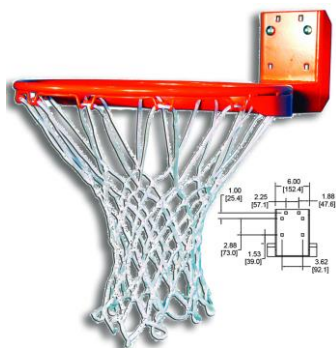
- Recommended Play Level: NIRSA, Recreation, Youth
- Affordable and durable double rim playground goal
- GGN net and hardware included



TITAN PLAYGROUND FIXED RIM

#7550

- Recommended Play Level: NIRSA, Recreation, Youth
- Our strongest traditional-style double rim playground goal
- GGN net and hardware included



REAR-MOUNT INSTITUTIONAL FIXED RIM

#66T

- Rear mount construction increases life span of backboard
- Compatible with any rear mount backboard
- GGN net and hardware included





"BRUTE" ANTI-WHIP BRAIDED NYLON NET

#NG07

- Engineered design prevents net whip
- Heavy 220g braided nylon construction
- 12 loops x 7 knot
- 21" long net



ANTI-WHIP NYLON NET

#NG02

- Engineered design prevents net whip
- 110g braided nylon construction
- 12 loops x 7 knot
- 21" long net



STEEL CHAIN NET

#NG01

- Rust-proof nickel-plated steel
- Hooks allow for easy attachment
- 12 loops
- 21" long net



BRAIDED NYLON NET

#NG03

- 50g braided nylon construction
- 12 loops x 7 knot
- 21" long net



"BRUTE" BRAIDED NYLON NET

#NG05

- The most durable nylon basketball net made
- Heavy 220g braided nylon construction
- 12 loops x 7 knot
- 21" long net

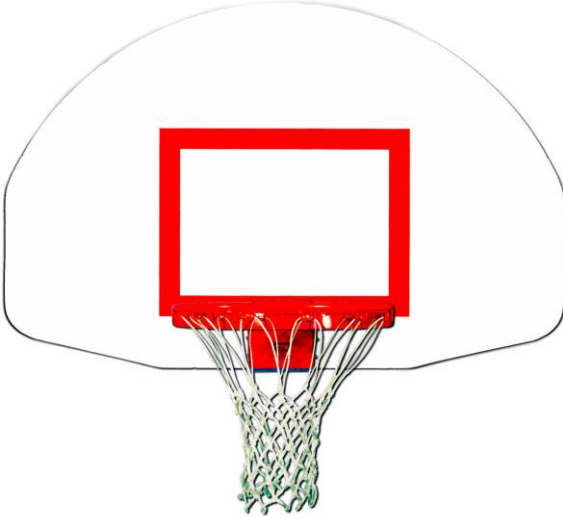


BRAIDED NYLON NET RED/WHITE/BLUE

#NG04

- 50g braided nylon construction
- 12 loops x 7 knot
- 21" long net
- Red, white & blue





FRONT-MOUNT FAN-SHAPED STEEL

Marked Target - #1245T

Unmarked - #1245

- Recommended Play Level: NRSA, Recreation, Youth
- Strongest board option for outdoor use and heavy play environments
- 12-gauge steel
- Powder coat white
- RIM SOLD SEPERATELY

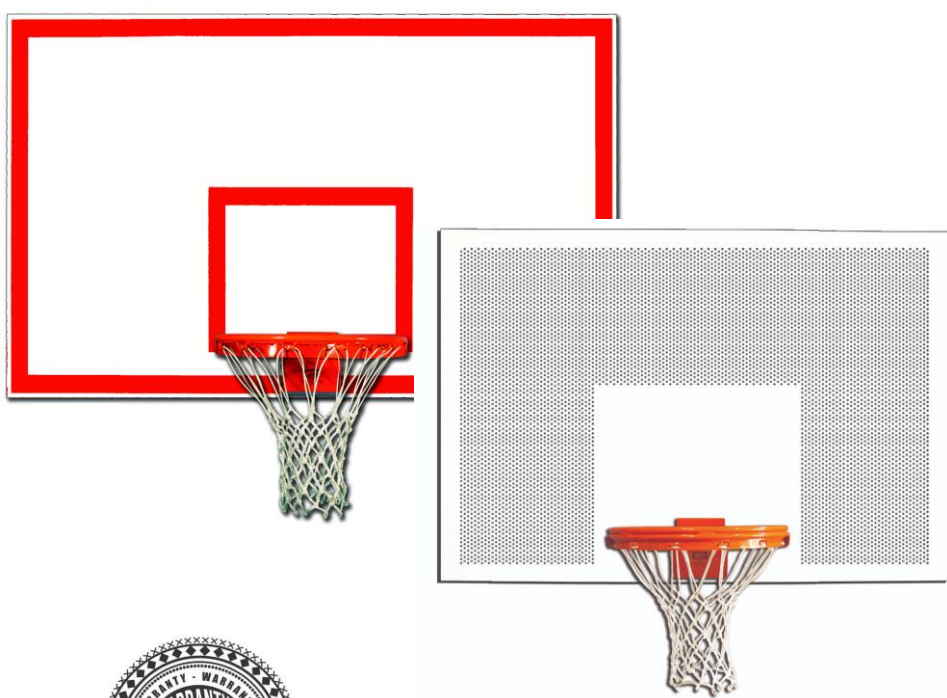


REAR-MOUNT FAN- SHAPED STEEL

Marked Target & Boarder - #1266B

Unmarked - #1266

- Recommended Play Level: NRSA, Youth, Recreation
- Strongest board option for outdoor use and heavy play environments
- 12-gauge steel
- Powder coat white
- RIM SOLD SEPERATELY



REAR-MOUNT FAN- SHAPED STEEL

▪ 42" x 72"

Marked Target & Boarder - #1272B

Unmarked - #1272

Perforated - #1272PS

▪ 42" x 60"

Marked Target & Boarder - #1260B

Unmarked - #1260

Perforated - #1260PS

▪ 48" x 72"

Marked Target & Boarder - #1270B

Unmarked - #1270

- Recommended Play Level: NRSA, Recreation, Youth
- Strongest board option for outdoor use and heavy play environments
- 12-gauge steel
- Powder coat white
- RIM SOLD SEPERATELY





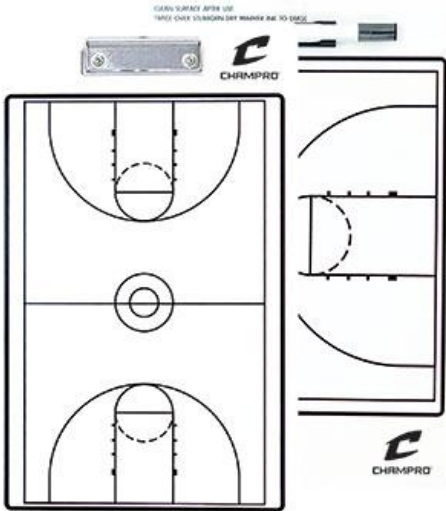
HARDWOOD TRACTION MAT

#ACT

- Ideal for all indoor conditions to provide cleaner and improved shoe grip
- Works on all gym floors
- Great for basketball, volleyball and physical education
- Base dimensions: 19"H x 19"W
- Sheet dimensions: 15"H x 18"W
- 60 sheets included

TRACTION MAT REPLACEMENT SHEETS

#ACTR



BASKETBALL COACH'S BOARD

#A092

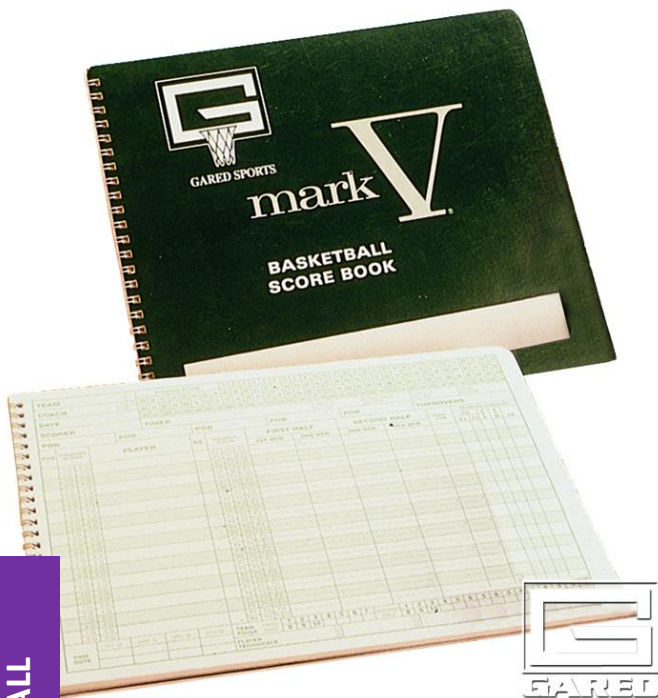
- 10" x 16"
- Two sided board with full field/court on one side and half field/court on the opposite side
- Easy wipe-off surface for use with dry erase marker
- Dry erase marker is included and clips onto board



WHISTLE W/LANYARD & MOUTH CUSHION

#A336CL

- Recommended for official use
- Pealess
- Wind chambers produce a high pitch sound
- Pierces through high noise



BASKETBALL SCOREBOOK

#MARKV

- Includes scoring sheets for 30 games with running scores
- Includes scoring instructions and season totals
- Heavy-duty cardstock backing



WATER RESISTANT STOPWATCH

#A152

- Large display
- Split 1-2 finish
- 1/100 second
- Alarm
- 12/24 hour time/calendar

Mueller MTape

#130105

- Mueller® MTape is a top-quality athletic tape ideal for all sports medicine applications
- Easy to tear and unwinds to the core for fast and effective taping
- Provides firm support and compression
- Made of hospital-grade, 100% cotton backcloth with a zinc oxide based adhesive
- High tensile strength, excellent tackiness and conformability
- CASE WHITE - 1.5" X 15 YD - 32 ROLLS



Mueller MWrap

#130702

- Provides a protective barrier between skin and athletic tape
- Used to hold pads, socks and cold packs in place
- Versatile enough to hold up sleeves, create a knee strap or protect feet under boots and athletic footwear
- CASE NATURAL – 2.75" X 30 YD – 48 ROLLS



Mueller Icebags & Dispenser

#030801 – Ice Bags

#030851 – Steel Ice Bag Dispenser

- Mueller® Disposable Plastic Bags for quick cold therapy of minor sports injuries
- 10"x18" bag. 1500 bags per roll.
- Items sold separately



Mueller Kold® Instant Cold Packs

#030102

- The Mueller® Kold® Instant Cold Packs are convenient and ready whenever you need them
- No refrigeration is needed, and they activate instantly
- Fast-acting cold compresses are ideal for sports injuries or first aid
- CASE – 16 Ice Packs



Mueller Refill Kit

#200750

- Restock your Medi Kits™ properly with a Mueller® Refill Kit
- Contents (may change) -(10) 3" x 3" Gauze Pads,(4) 4" x 4" Gauze Pads,(6) M Strips® X-large,(12) M Strips® Regular,(10) Nasal Plugs,(1) 3 oz Lubricating Ointment,(1) M Cutter™,(1) 2 oz Germa Spray,(1) 3 oz Medi Stat™ Spray,(1) 4 oz Tuffner® Pre-Tape Spray,(1) 2.75 oz Abrasion Ointment,(10) StaphASeptic™ 1/16 oz packets,(1) Elastic Bandage roll,(1) Glove Canister,(3) Pair Exam Gloves,(1) MuellerKold® Instant Cold Pack,(1) M Wrap® roll,(1) 1.5" M Tape® roll,(1) Tape Tote™,(1) 4 oz Coolant Cold Spray,(1) Wonder Wrap™ (3" Elastic Wrap),(1) 4 oz Tape & Tuffner® Remover Spray,(1) 3" Gauze Roll



Mueller Ice Bag Wrap

#230676

- The soft, adjustable ice bag wrap is ideal for applying cold therapy to small or large body parts
- The long straps provide a custom fit with firm, comfortable compression
- The ice bag is made with a high-tech liner that won't drip or leak - INCLUDED



Mueller Mouth Guards – CASE of 100

#1310?? - Muellerguard™ without strap

#1310?? – Strapguard™ with strap

- Designed by a dentist, Muellerguard® Mouthguard helps reduce the risk of dental injury during the toughest of sports
- Thin front wall construction won't interfere with speech or breathing, while thickened posterior area helps absorb impact
- Fast-fitting co-polymer resin for comfortable fit
- Oral trauma reduced via an aerated shock absorbing "pillow"
- Perfect fit gives better blunt-blow protection
- Low profile helps reduce gagging
- Available colors: Clear, White, Yellow, Orange, Red, Pink, Maroon, Kelly Green, Dark Green, Royal, Navy, Purple, Black





EDWARDS CLASSIC ROUND POSTS

3" POSTS – STANDARD HEIGHT

GREEN - #1234404

BLACK - #1234411

GROUND SLEEVES - #1234473

2 7/8" POSTS – STANDARD HEIGHT

GREEN - #1234428

BLACK - #1234435

GROUND SLEEVES - #1235708

Your court will surely shine with the Edwards 3" Classic Round Post. Made of polyester powder-coated tubular steel with integral lacing bars. Comes complete with brass winder. Ground sleeves are not included. Designed to meet the demanding specs of the North American market.

- Constructed of round tubular steel
- Powder coated finish
- Complete with brass winder and lacing bars
- Ground sleeves sold separately

EDWARDS 10 & UNDER TENNIS / PICKLEBALL POSTS

3" POSTS

GREEN - #1371705

BLACK - #1393373

GROUND SLEEVES - #1233473

- Sized right for 10 & Under Tennis and Pickleball
- Constructed of 3" round tubular steel
- Powder coated finish - 36" above ground height
- Complete with brass winder and lacing bars
- Ground sleeves and net sold separately



EDWARDS WIMBELDON SQUARE POSTS

3" POSTS

GREEN - #1234459

BLACK - #1234442

GROUND SLEEVES - #1234480

- Constructed from 3" square "box-section" steel
- Powder coated finish
- Complete with brass winder and lacing bars
- Ground sleeves sold separately





2.8 MM TOURNAMENT TENNIS NET

#T1

- 42' Tournament
- 2.8 mm Braided polyethylene netting
- 2.5" Double reinforced headband
- Six rows of heavy nylon stitching
- 6 mm Vinyl coated steel cable
- Taped nylon bottom and side pockets and dowels



3 MM TOURNAMENT TENNIS NET

#T100

- 42' Tournament
- Heavy-duty 3 mm double braided polyethylene netting
- 2.5" Double reinforced headband
- 6 rows of heavy nylon stitching
- 6 mm Vinyl coated steel cable
- Taped nylon bottom and side pockets and dowels



3.6 MM TOURNAMENT TENNIS NET

#T200

- 42' Tournament
- Heavy-duty 3.6 mm double braided polyethylene netting
- First 5 rows of double netting
- 2.5" Double reinforced headband
- 8 Rows of heavy nylon stitching
- 6 mm vinyl coated steel cable
- Taped nylon bottom with side pockets and dowels



TENNIS CENTER STRAP

#TCS

- Nylon webbing
- Adjustable heavy-duty snap and hook
- Measures 2"W and up to 36"L
- White

8 & UNDER TENNIS / PICKLEBALL NET 3MM

#PBN500

- Official pickleball tournament size
- Approximately 30" of cable on each side of the net for attaching to the posts
- Braided polyethylene
- 23 oz Vinyl headband steel cable
- 27' Steel cable
- Fiberglass dowels
- 36"H x 21'9"L



10 & UNDER TENNIS NET 3.5MM

#1296785

- 3.5mm braided, knotless nylon netting with 1-3/4" square mesh
- Heavy duty vinyl coated headband
- 5/8" diameter fiberglass dowels
- 42"H x 33'L

PORTABLE PICKLEBALL NET

#PBNET

- Regulation size 22'W
- Steel frame for superior durability
- Adjustment straps maximizes tension
- Center support keeps the net taught at 34"H
- Heavy-duty carry bag





PENN® CHAMPIONSHIP TENNIS BALLS

#MTPENCAN

- 3 balls per can – 24 Cans/Case



PENN® PRACTICE/COACH TENNIS BALLS

#MTPENBAL

- 3 balls per can – 24 Cans/Case



WILSON CHAMPIONSHIP TENNIS BALLS

#MTWILCAN

- 3 balls per can – 24 Cans/Case



WILSON PRACTICE TENNIS BALLS

#MTWILBAL

- 3 balls per can – 24 Cans/Case



WILSON ENERGY XL TENNIS RACQUET

#1388070

- V-Matrix™ Technology for larger sweet spot
- 112" Head, 27.5" length
- 10.3 oz strung weight(291g)
- 4 3/8" grip size



RHINO PICKLEBALL APEX PADDLE

#APEX100

- Meets all USAPA Tournament guidelines
- Featuring the ProPolyCore2™ for optimum control and vibration dampening technology
- Poly surface for excellent spin control
- Ultra cushion texture grip
- Face: Fiberglass
- Weight: 7.8 to 8.5 oz
- Length: 15.5±" Width 7.75±"
- Handle: 4.75±"
- Grip Circumference: 4.25±"

DILLER PADDLE & BALL PACK

2 PADDLES + 4 BALLS - #1450226

4 PADDLES + 4 BALLS - #1450227

SINGLE PADDLE ONLY- #1450225



OUTDOOR PICKLEBALLS

#PB6RMOSET

- USAPA Approved
- Rotationally molded seamless design for the most accurate and straightest flight
- Weighted for straight and fast shots even in windy conditions
- Strategically aligned hole configuration for optimal balance
- 40 holes, 3"D, 0.9 oz
- Set of six



WILSON K1 GOLD

White - #WTH1895AWXB

Navy/Red/White - #WTH1895A1XB

Black/White - #WTH1895A4XB

- Official size and weight
- Durable leather cover
- Indoor use only
- Responsive feel for perfect touches



DRILL CART

#HSVBC24

- Holds up to 24 balls
- Nylon carry bag with shoulder strap included
- Durable steel frame
- Collapsible



CHAMPRO PREMIER

#VBST4000





- Ideal for high school and college games
- Microfiber cover
- Floating butyl bladder
- NFHS approved



MESH BALL BAG

#A303

- Ideal for laundry, balls or equipment
- Easily fits eight basketballs, footballs, soccer balls or volleyballs
- Includes name tag
- Drawstring closure features cord lock button
- 24" x 36"

POWER NET	SKU#	SIZE	MESH	CONSTRUCTION
	NV01	32' X 3', 3mm twisted polyethylene net	4"	Reinforced tarpaulin top, ends and bottom with sewn-in fiberglass dowels, 3.8mm coated steel cables on top and bottom
COLLEGIATE NET	SKU#	SIZE	MESH	CONSTRUCTION
	NV04	32' X 3', 2.5mm twisted polyethylene net	4"	Reinforced tarpaulin top, ends and bottom 3.8mm coated steel cables on top and bottom
VARISTY NET	SKU#	SIZE	MESH	CONSTRUCTION
	NV06	32' X 3', 2mm twisted polyethylene net	4"	Reinforced top, ends and bottom 3.8mm coated steel top
COMPETITION NET	SKU#	SIZE	MESH	CONSTRUCTION
	NV08	32' X 3', 1.7mm twisted polyethylene net	4"	Reinforced top 4mm coated polyethylene top



JAYPRO CARBON ULTRALITE™ VOLLEYBALL SYSTEM

3 ½" Pole - #PVB-9000

3" Pole - #PVB-9500

- NCAA, NFHS and USVBA compliant
- Carbon Fiber uprights.
- Pin-Stop height adjustment for men, woman, and Youth Volleyball net heights.
- 3 in. of adjustable foot provides for fine tuning adjustments.
- Uprights only weighs 16-3/4 in. pounds.
- Recessed polymer pulley wheels and worm drive winch
- Worm Drive Tension winch is easy to operate. Built-in locking mechanism prevents accidental movement under tension. Fold-away handle.
- Sold as 1 System
- Premium Competition Volleyball net, antennas, and Upright padding included.

Specify pad color when ordering:

Pink, Red, Yellow, Gray, Black, Maroon, Dark Green, Kelly Green, Navy Blue, Royal Blue, Light Blue, Tan, Purple, and Orange.



JAYPRO FEATHERLITE™ VOLLEYBALL UPRIGHTS

3 ½" Pole - #PVB-51U

3" Pole - #PVB-45U

2" Pole - #PVB-55U

- NCAA, NFHS and USVBA compliant
- Pin-Stop height adjustment allows for 16 different net heights that range from 6 ft.6 in. to 8 ft.2 in.
- Aluminum uprights with engraved height markers.
- Recessed polymer pulley wheels and worm drive winch
- Worm Drive Tension winch is easy to operate. Built-in locking mechanism prevents accidental movement under tension. Fold-away handle.
- Sold as 1 Pair



JAYPRO FLOOR SLEEVES CHROME COVER

3 ½" - #PVB-75S-CP

3" - #PVB-70S-CP

2 3/8" - #BSO-2G-CP

BRASS COVER

3 ½" - #PVB-75S

3" - #PVB-70S

2 3/8" - #BSO-2G

- Heavy-duty construction prevents basketball dead spots
- Floor sleeve is 10 in. deep
- Cover measures 7-1/2 in. in diameter.
- Spring loaded latch
- Sold as 1 Pair



SUPERIOR RECYCLED LIFESTYLE TEE

YOUTH XS-XL - #BST108Y

WOMEN'S XS-2XL - #BST108W

ADULT S-3XL - #BST108A

- Recycled, lightweight 100% polyester fabric body
- Ribbed crew neck
- Set-in sleeves, double needle hem
- Forward shoulders
- Straight bottom, double needle hem



RECYCLED YARN - GARMENT MAY BE PRONE TO SLIGHT SHADE VARIATION



LEADER T-SHIRT

YOUTH S-XL - #BST85Y

ADULT S-4XL - #BST85A

- Impact-85, premium 100% polyester interlock fabric
- Self-material crew neck with back neck tape
- Technical cut shoulder insert
- 1/4 length set-in sleeve, double needle hemmed
- Straight bottom, double needle hemmed
- DRI-GEAR® technology



STAR LADIES V-NECK T-SHIRT

GIRLS' S-L - #BST21G

WOMEN'S XS-2XL - #BST21W

- Impact 85, premium weight 100% polyester interlock jersey
- Self-material overlap V-neck with back neck tape
- Set-in cap sleeves, double needle hem
- Athletic cut and grade
- DRI-GEAR® technology



STOCK DECORATION IS AVAILABLE. CALL US TODAY FOR PRICING!

VISION SHORT SLEEVE T-SHIRT

- YOUTH XS-L - #BST99Y**
- WOMEN'S XS-2XL - #BST99W**
- ADULT S-4XL - #BST99A**

- o Com-V-Tek, lightweight 100% Polyester interlock fabric
- o Self-material crew neck
- o 1/4 length set-in sleeve, double needle hemmed
- o Straight bottom, double needle hemmed



VISION LONG SLEEVE T-SHIRT

- YOUTH XS-L - #BST99LSY**
- WOMEN'S XS-2XL - #BST99LSW**
- ADULT S-4XL - #BST99LSA**

- o COM V-TEK, 100% polyester lightweight fabric
- o Self-material crew neck
- o Set-in long sleeves, double needle hem
- o Straight bottom, double needle hem



VISION SHORTS

- YOUTH S-XL - #BBS44Y**
- GIRLS' S-L - #BBS44GY**
- WOMEN'S S-2XL - #BBS44W**
- ADULT S-3XL - #BBS44A**

- o Com-V-Tek, lightweight 100% polyester interlock fabric
- o 1 1/2" covered elastic waistband with drawcord
- o Double needle hemmed leg openings
- o 9" adult inseam, 5" women's & girls' inseam, 7" youth inseam



STOCK DECORATION IS AVAILABLE. CALL US TODAY FOR PRICING!

SPORTSWEAR

REV REVERSIBLE TEE

YOUTH S-L - #BST10Y

ADULT S-2XL - #BST10A

- 100% polyester single ply reversible tee shirt
- Self-material crew neck color
- 1/4 length set-in sleeves
- Double needle hemmed sleeves and bottom



DOUBLE STOCK REVERSIBLE TEE

YOUTH S-L - #BSTK9Y

ADULT S-2XL - #BSTK9A

- Reversible t-shirt available in stock color combinations
- Z-cloth, lightweight 100% polyester interlock fabric
- Self-material crew neck collar
- 1/4 length set-in sleeves with closed sleeve ends
- Straight bottom, double needle hemmed
- Left open at bottom for screen printing



STOCK DECORATION IS
AVAILABLE. CALL US TODAY
FOR PRICING!

ADVANCED
SPORTS SUPPLY



GUNNER SHOOTER SHIRT

YOUTH S-XL - #BST12Y

ADULT S-4XL - #BST12A

- Impact-85, premium 100% polyester interlock fabric
- Crew neck collar with taped neck
- Technical cut shoulder insert
- Set-in full-length sleeves, self-material cuffs
- Straight bottom, double needle hemmed
- DRI-GEAR® technology



PERFORMANCE 1/4 ZIP

YOUTH S-XL - #FLQ4Y

ADULT S-4XL - #FLQ4A

- PERFORMANCE, 84% polyester, 16% spandex lightweight fabric body
- Self fabric 1/4 zip with stand up collar
- Set-in long sleeves with dropped shoulders, double needle hem
- Shaped, double needle hemmed bottom



LINEUP FLEECE HOODIE

YOUTH S-XL - #FLQ4Y

ADULT S-4XL - #FLQ4A

- FLEECE, 100% polyester fabric body
- Traditional hoodie with lace
- Set-in long sleeves with self-material cuffs
- Self-material bottom band
- Kangaroo pocket





BS25 GRVNVY

BS24: WHISCA



BS25

GRY/BLK GRVROY GRVSCA

BS24

WH/BLK WHNVY WHROY

EXTRA INNINGS ¾ LENGTH

YOUTH S-XL - #BS24Y

ADULT S-2XL - #BS24A

YOUTH S-XL - #BS25Y

ADULT S-2XL - #BS25A

- BS25: CATIONIC Z-CLOTH, 100% polyester heather fabric body with Z-75 fabric sleeves
- BS24: Z-75, lightweight 100% polyester interlock fabric body and sleeves
- PRO-AIR 100% polyester mesh fabric inserts
- Crew neck collar with taped neck
- ¾ length raglan sleeves, double needle hemmed
- Straight bottom, double needle hemmed



WOVEN WARM-UP JACKET

YOUTH S-L - #BSJ200Y

ADULT S-4XL - #BSJ200A

- STRETCH WOVEN, Polyester / Spandex water repellent body
- Self material bomber collar with 1/4 front zip
- Stretch drawcord hemmed in bottom with barrel adjustment feature
- Set-in sleeves, double needle hem



BLK

GRPH

NVY

ROY

SCA

WH



GRPH

CAGE JACKET

YOUTH M-L - #BSJ100Y

ADULT S-4XL - #BSJ100A

- Poly/spandex stretch woven water-repellant body
- 100% poly mesh side inserts for breathability
- Self-material stand-up collar
- 1/4 zip front with zipper pull
- Stretch drawcord in hemmed bottom with plastic barrel adjustment feature
- 1/2 length set-in sleeve, double needle hemmed



BLK

NVY

ROY

SCA



LTD

VICTORIOUS SHORT

YOUTH S-XL - #BBS33Y

ADULT S-3XL - #BBS33A

- Z-Cloth, lightweight 100% polyester interlock fabric
- 1.5" covered elastic waistband with drawcord
- Double needle hemmed leg openings
- 9" adult inseam, 7" youth inseam, 8" women's inseam



CRD

DYNAMIC TRICOT MESH SHORT

YOUTH S-XL - #BBS55Y

ADULT S-3XL - #BBS55A

7" INSEAM ADULT S-3XL - #BBS557A

- Zone, 100% polyester tricot mesh fabric
- Inner solid tricot fabric liner
- 1 1/2" covered elastic waistband with drawcord
- Double needle hemmed leg opening



ROY

LIMITLESS SHORT

YOUTH S-L - #BBS66Y

WOMEN'S XS-2XL - #BBS66W

ADULT S-4XL - #BBS66A

- Active cloth 2.0, 100% polyester lightweight fabric body
- Pin-dot mesh, 100% polyester diagonal side inserts
- Exposed 2" internal branded waistband
- Deep side pockets
- 9" adult inseam, 5" women's inseam, 7" youth inseam



**STOCK DECORATION IS AVAILABLE.
CALL US TODAY FOR PRICING!**



PROFESSIONAL ATHLETIC SOCK

S-L - #AS1

- 85% polyester/15% spandex
- Compression-style fit to perform better and recover faster
- Pro-quality construction is ideal for any sport
- Double cuff, double rib top and reinforced tailored toe
- Extra-long athletic cut

SOCK SIZE	SOCK SIZE				TUBE LENGTH (INCHES)
	GIRL'S	BOY'S	WOMEN'S	MEN'S	
XS: 3-5	7-13	N/A	N/A	N/A	14-16
S: 6-8	13-6	9-4	4-6	N/A	19-20
M: 9-11	6-9	4-9	6-9	4.5-9	23-24
L: 10-13	N/A	N/A	10-13	9-12	29-30



FEATHERWEIGHT ATHLETIC SOCK

XS-L - #AS5

- 88% nylon/12% elastane
- 50% lighter than traditional tube socks
- Tube style sock is ideal for any sport

SOCK SIZE	SOCK SIZE				TUBE LENGTH (INCHES)
	GIRL'S	BOY'S	WOMEN'S	MEN'S	
XS: 3-5	7-13	N/A	N/A	N/A	14-16
S: 6-8	13-6	9-4	4-6	N/A	19-20
M: 9-11	6-9	4-9	6-9	4.5-9	23-24
L: 10-13	N/A	N/A	10-13	9-12	29-30



MULTI-SPORT ATHLETIC SOCK

XS-L - #AS2

- 78% polyester/22% elastane
- Tube style sock is ideal for any sport
- Over-the-calf cut

SOCK SIZE	SOCK SIZE				TUBE LENGTH (INCHES)
	GIRL'S	BOY'S	WOMEN'S	MEN'S	
XS: 3-5	7-13	N/A	N/A	N/A	14-16
S: 6-8	13-6	9-4	4-6	N/A	19-20
M: 9-11	6-9	4-9	6-9	4.5-9	23-24
L: 10-13	N/A	N/A	10-13	9-12	29-30



Full-dye, premium cut-and-sew sublimation. No limitations!

All-over sublimation on pre-sewn garments. Super fast!

Standard screen printed decoration on stock apparel.

Embroidered decoration on CHAMPRO® caps

LEAD TIMES

STANDARD: 15 BUSINESS DAYS
EXPRESS: 10 BUSINESS DAYS*
EXPRESS+: 5 BUSINESS DAYS*

STANDARD: 3 BUSINESS DAYS*

STANDARD: 10 BUSINESS DAYS*

EXPRESS: 10 BUSINESS DAYS*
EXPRESS+: 5 BUSINESS DAYS*

MINIMUMS

6 piece order minimum
25% upcharge on less than 6

No minimum

No minimum

12 piece per team order minimum

NAMES, NUMBERS, & LOGOS

No charge for player names, numbers, vector logos, or custom designs (if vector artwork is provided).
Vector artwork creation fee: \$50/hr

No charge for player names, numbers, vector logos, or custom designs (if vector artwork is provided).
Vector artwork creation fee: \$50/hr

See price list for decoration pricing.
Decoration location may vary depending on garment.

See price list for decoration pricing.
Decoration location may vary depending on item.

DESIGN FLEXIBILITY

MOST FLEXIBLE

Little to no limitations

FLEXIBLE

Sleeve logos not available for Splash

FLEXIBLE

Decoration in limited locations by garment

FLEXIBLE

Decoration in limited locations by item



CUSTOM BUILDER

CHECK OUT OUR CUSTOM APPAREL/UNIFORM/CAP BUILDER AT advancedsportssupply.com

SPORTSWEAR



Full-dye, premium cut-and-sew sublimation!