

DONALD J. SCHEFFLER'S CONSTRUCTION

STRUCTURAL AND ARCHITECTURAL CONCRETE

"Creating your vision within our divisions, with over two decades of precision..."

ARCHITECTURAL HARDSCAPE AND WALL FINISHES

BEACH AND HILLSIDE FOUNDATIONS

INTRICATE STONEMWORK

PERMEABLE SOLUTIONS



Heidi Corporation dba.

Donald J. Scheffler's Construction 727 N Vernon Ave, Azusa, CA 91702

Office: 626.333.6317 Fax: 626.855.3428

CA License #840990

www.donaldschefflerconstruction.com

INTRODUCTION

DONALD J. SCHEFFLER'S CONSTRUCTION WAS FORMED MORE THAN TWO DECADES AGO AS A DIVISION OF THE HEIDI CORPORATION WITH THE MIND SET OF PROVIDING CONSULTING AND CONSTRUCTION SERVICES FOR OUR DIVISIONS: STRUCTURAL AND ARCHITECTURAL FOUNDATIONS, AND ARCHITECTURAL HARDSCAPE.

OUR VISION IS TO PROVIDE SEVERAL DIVISIONS WHICH ALLOWS US TO CONTROL AND IMPLEMENT UNIFORMITY OF FINISHED CONCRETE THROUGHOUT THE PROJECT. WE PROVIDE OUR CLIENTS WITH CONCRETE CONSULTING, PRECISE BUDGETARY PRICING, PROPRIETARY CONCRETE, MIX DESIGNS, STRUCTURAL ENGINEERING AND ARCHITECTURAL WALL AND HARDSCAPE FINISH SAMPLES.

ALTHOUGH CONCRETE HAS BECOME OUR FOUNDATION FOR MORE THAN TWO DECADES WE ALSO EXCEL AT PROVIDING MASONRY INCLUDING INTRICATE STONE WORK, INTERLOCKING PAVERS, STONE VENEERING, AS WELL AS OFFERING LEED AND PERMEABLE SOLUTIONS.

DONALD J. SCHEFFLER CONSTRUCTION, AS A TEAM, IS PASSIONATE ABOUT CONCRETE AND IS CONTINUOUSLY CREATING AND EXPANDING HOW CONCRETE CAN BE USED IN MANY FACETS AS A MEDIUM.

IT IS OUR COMMITMENT TO PROVIDE TO YOU UNSURPASSED QUALITY AND DETAIL, ABILITY TO DEAL WITH CHANGE, TO WORK WITHIN STRINGENT SCHEDULES AND PROVIDE EXCEPTIONAL VALUE...

WE TRULY APPRECIATE YOUR INTEREST AND LOOK FORWARD TO WORKING WITH YOU

THANK YOU

www.donaldschefflerconstruction.com

OUR SERVICES

STRUCTURAL AND ARCHITECTURAL CONCRETE

ARCHITECTURAL APPLICATIONS

- CANTILEVERED FOUNDATIONS
- BOARD FORMED WALLS
- RADIUS WALLS
- WATER FEATURES
- SMOOTH TROWEL FINISHED WALLS
- PROPRIETARY TEXTURE AND FINISHED WALLS

STRUCTURAL APPLICATIONS

- BEACH AND HILLSIDE FOUNDATIONS
- CAISSON AND SOLDIER PILE CONSTRUCTION
- SLOPE MEDIATION
- POST TENSIONED SLABS
- SHOTCRETE WALLS
- POOL SHEELS
- POUR IN PLACE RETAINING WALLS
- MASONRY RETAINING WALLS

ARCHITECTURAL HARDSCAPE

ARCHITECTURAL CONCRETE

- HAND SEEDED AND EXPOSED FINISHES
- RETARDANT - SAND - AND ACID WASH FINISHES
- INTERIOR CONCRETE TOPPING SLABS AND MICRO TOPPINGS
- POLISHED CONCRETE
- POUR IN PLACE WALL CAPS AND POOL COPINGS
- PERVIOUS CONCRETE SYSTEMS

MASONRY

- INTRICATE STONE WORK
- GRANITE - COBBLESTONE - BASALT - FLAGSTONE - LIMESTONE - BRICK
- INTERLOCKING PAVERS
- PEDESTAL PAVERS AND PEDESTAL IPE WOOD DECKING
- PERVIOUS PAVER SYSTEMS
- STONE VENEER
- STACKED BOULDERS

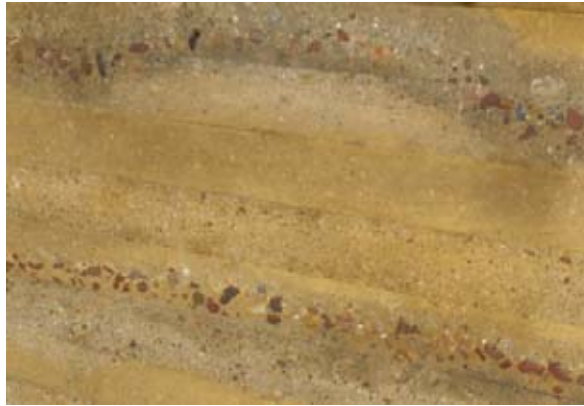
architectural foundation and wall division

“one simple vision, to implement uniformity of finished concrete throughout...”

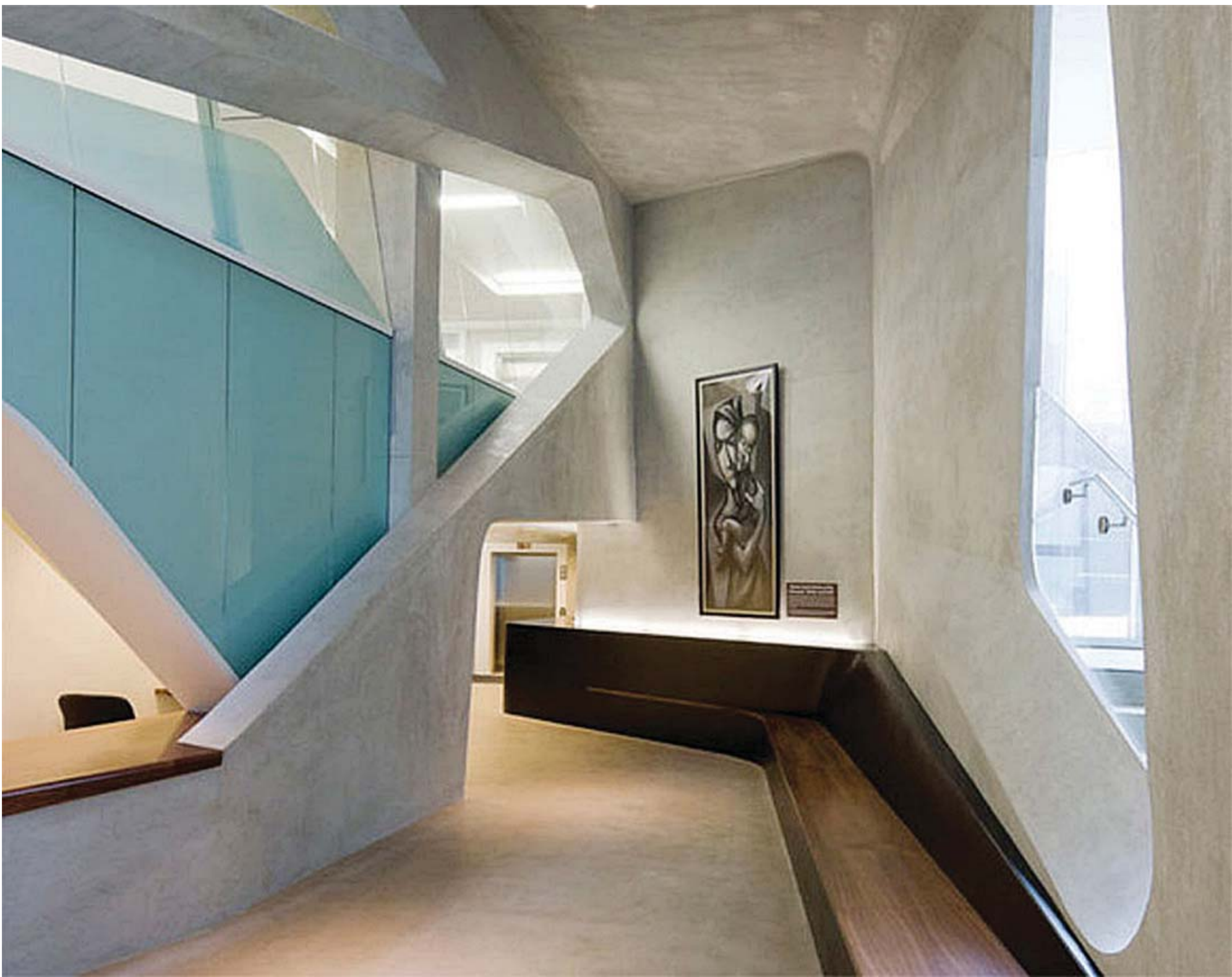




“Architectural wall finishes are controlled by proprietary concrete mix designs and finishing techniques to achieve a unique finish with color, smoothness, warmth, reveal, and texture...”











structural division

“one simple vision, to implement uniformity of finished concrete throughout...”





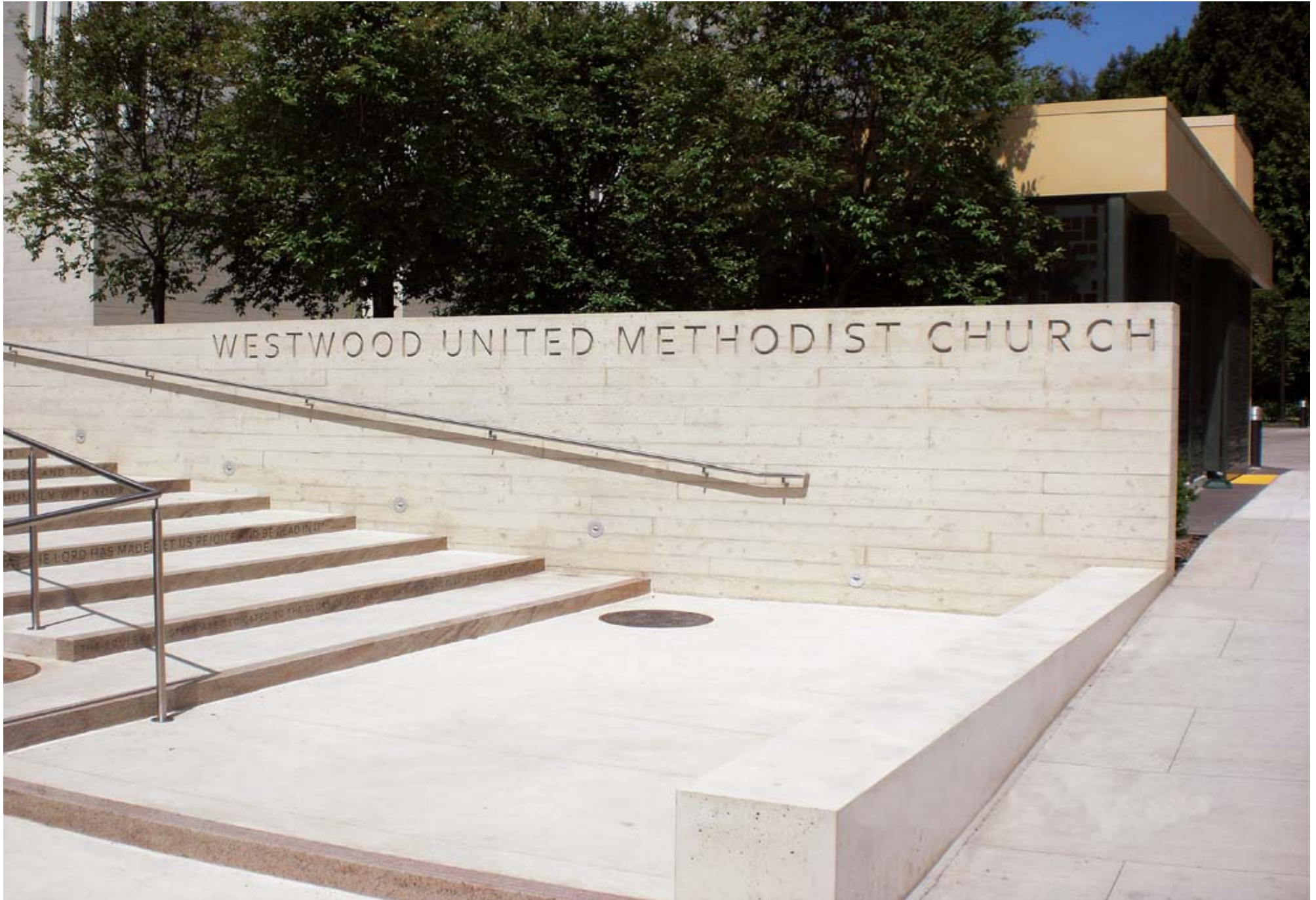






architectural hardscape division

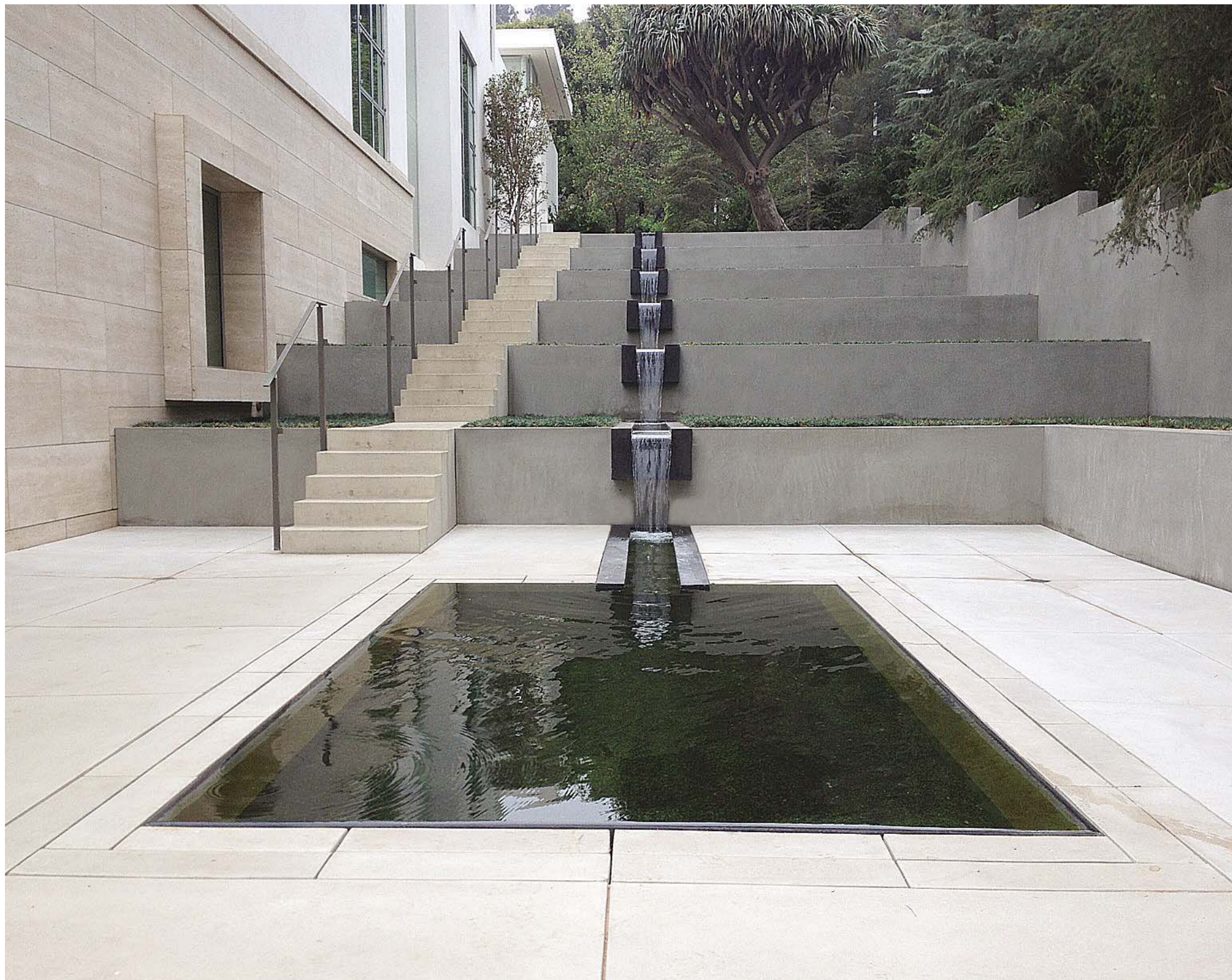
“one simple vision, to implement uniformity of finished concrete throughout...”



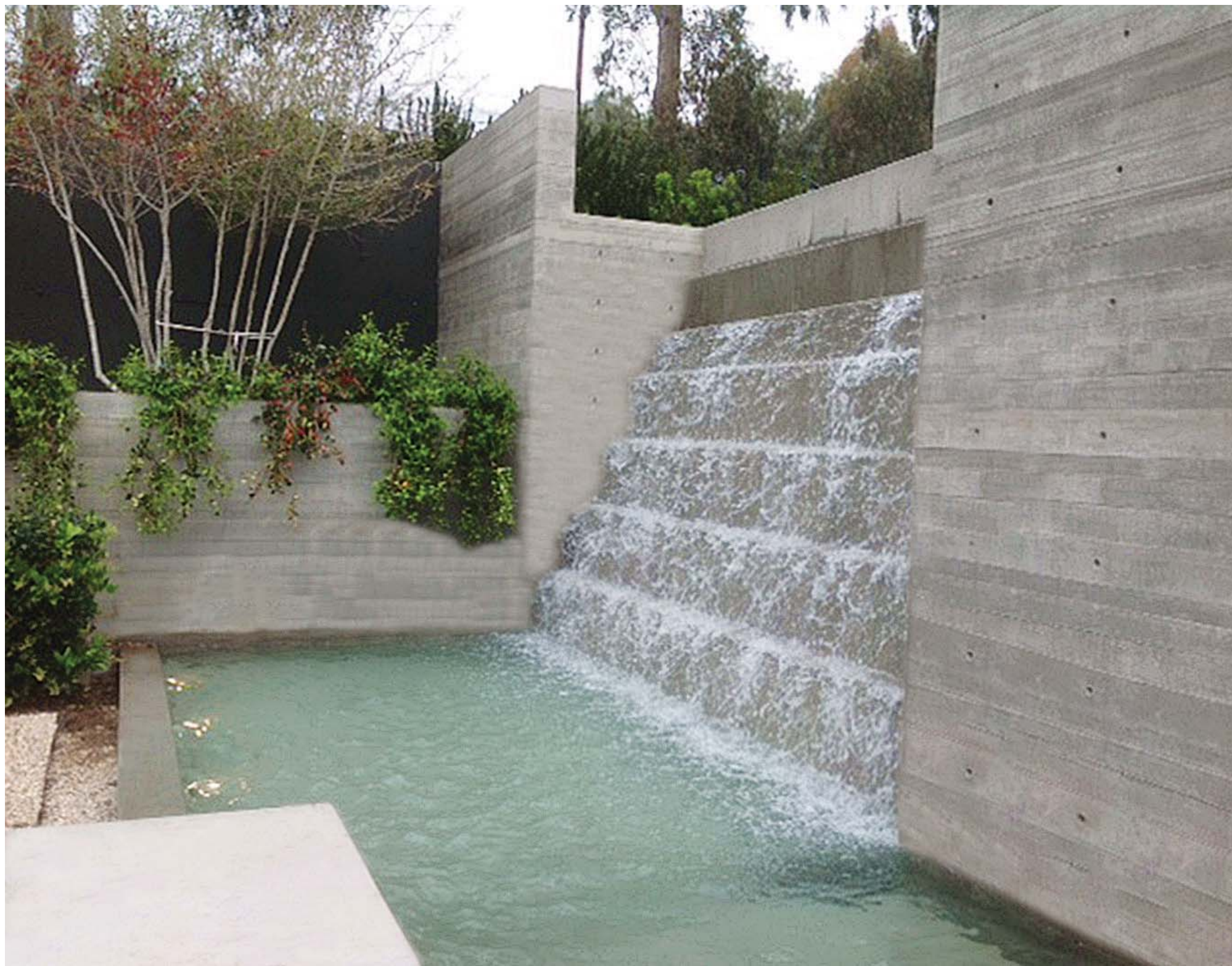
“Mirroring of one medium, texture, material, and vision within several elements can be achieved using cast in place concrete board formed walls, stairs, and paving...”





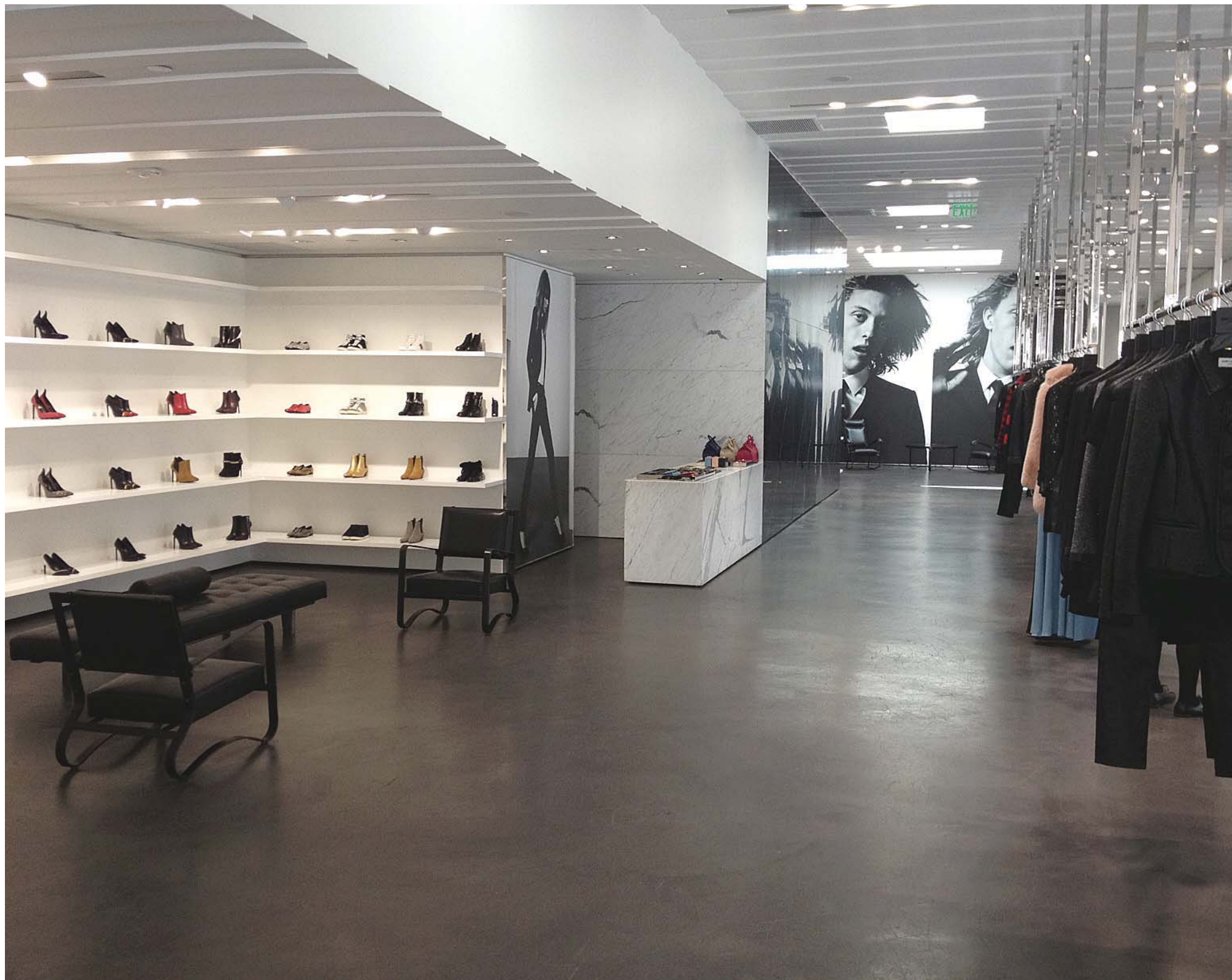






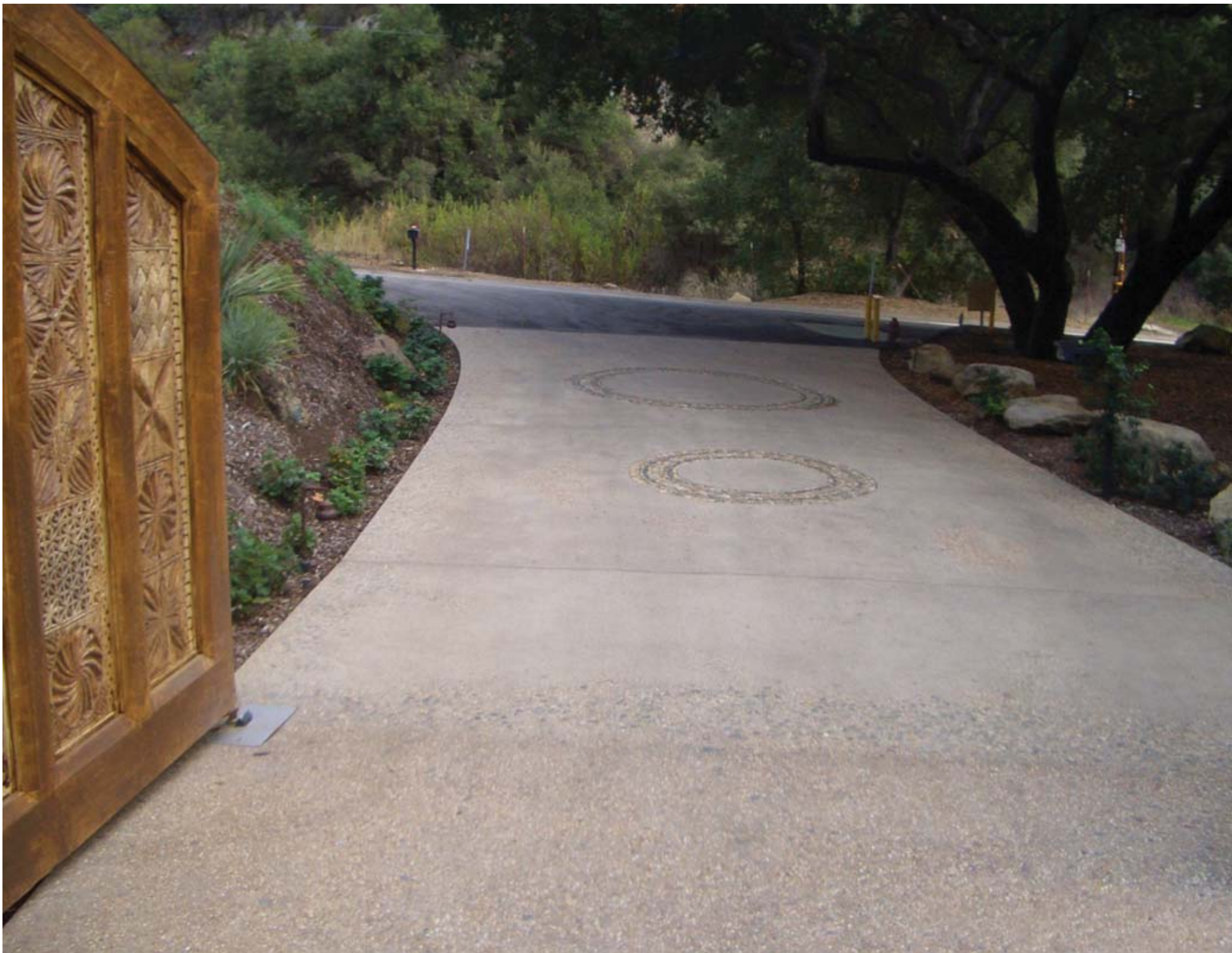


"Interior concrete topping slabs provide warmth and compliment exterior concrete finishes..."



“Hand seeded and exposed aggregate finishes matched with integral color background offer and indefinite amount of options to create a unique medium....”





“Hand seeded and exposed aggregate finish with a controlled light to heavy broadcast and reveal...”







“Pour in place concrete benches, wall caps, and pool copings...”

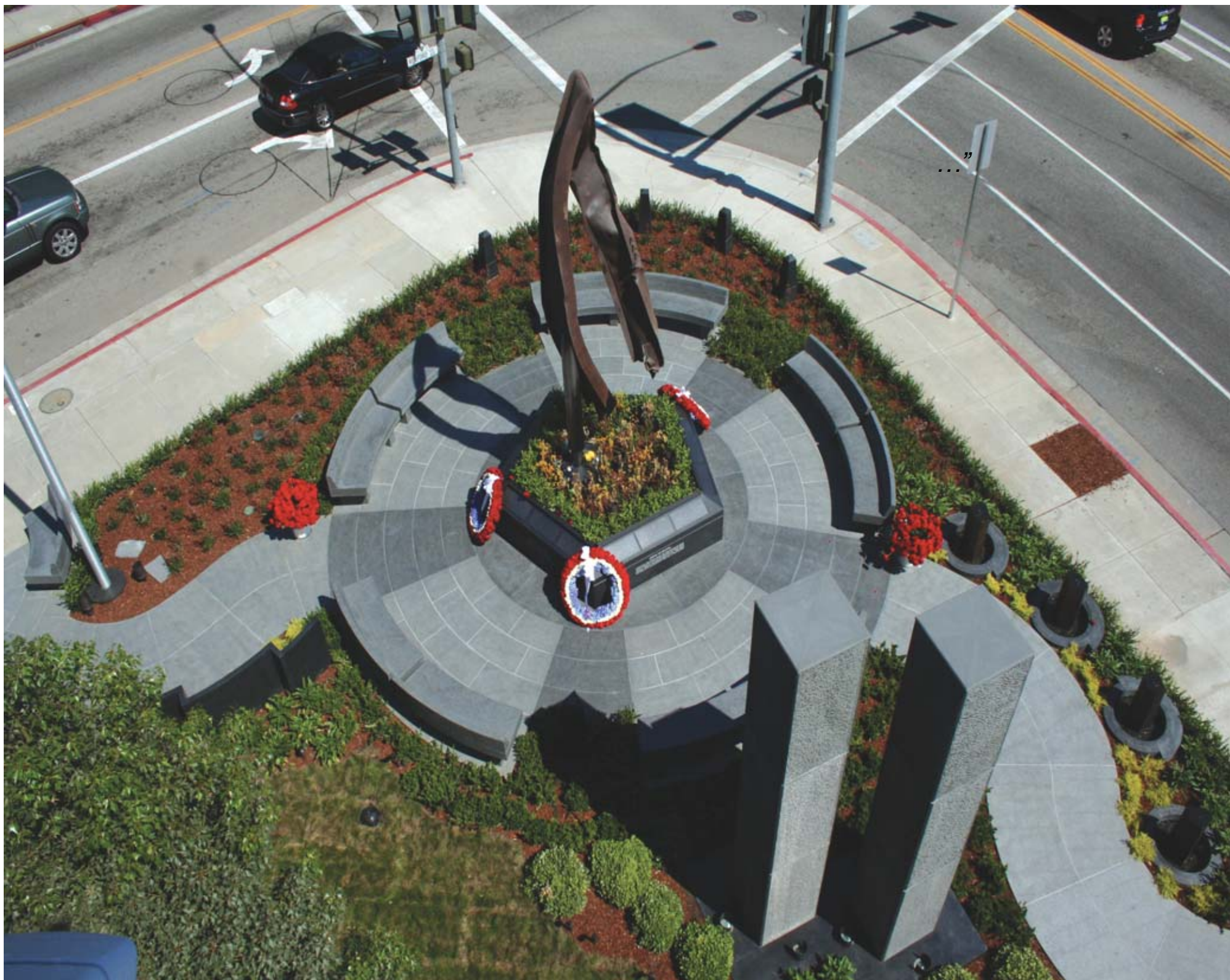




“Alternating depths of texture, color, and score lines throughout...”











DONALD J. SCHEFFLER'S CONSTRUCTION

STRUCTURAL AND ARCHITECTURAL CONCRETE

"Creating your vision within our divisions, with over two decades of precision..."

Heidi Corporation dba
Donald J. Scheffler's Construction
15815 Amar Road, City of Industry, Ca. 91744
Office: 626-333-6317 Fax: 626-855-3428
CA License #840990

www.donaldshefflerconstruction.com