



The Calgary Archers Club

Our Mission Statement

To promote and perpetuate the practice and enjoyment of archery and its related activities



Our Values

In support of our mission Statement, we are guided by the following beliefs and values:

- ▶ We believe in good sportsmanship and the enjoyment of archery;
- ▶ We are honest, ethical and show respect for the environment and its wildlife;
- ▶ We favor open communication and constructive feedback;
- ▶ We ask that all members actively participate in the club; and
- ▶ We believe that archery will survive through youth education and our partnership with relevant agencies.

Our History

- ▶ The Calgary Archers Club was founded as a not-for-profit group in 1976 and registered under the *Societies Act* in 1978.
- ▶ Since the early 1980's our club was located just west of the City of Calgary on Highway 8.
- ▶ During our 50 years in operation our club has been working to make the sport of archery available to everyone and to see its benefits shared.
- ▶ Our Club has always sought to share the enjoyment of archery in all its forms which include target, field and 3D shooting.
- ▶ When not directly serving our membership our club ran free lessons for not-for-profit groups and got involved with City events to make archery available to anyone.

Disciplines of Archery



Target

Archers shoot paper targets in a flat open space at 3 set distances.



Field

Archers shoot a series of targets set at marked distances through natural terrain with varying degrees of difficulty.



3D

Archers shoot at a series of foam 3 dimensional animal targets setup at unmarked distances through natural terrain.

Types of Archery Equipment



Recurve

Is a bow that does not use a levering system. A recurve bow has tips that curve away from the archer when the bow is strung and uses the string and the shooters draw to bend the limb.



Compound

Is a modern bow that uses a levering system, usually of cables and pulleys to bend the limbs.



Traditional

Is most easily explained as Robin Hood's bow which is made with a simple "stick" and a string. There is little curve to the limbs and is shaped like a D when strung.

Our People and Our Programs

- ▶ Our range is run by an elected board of volunteers.
- ▶ We have 10 specific positions on our board and can then have up to 10 other general directors that don't hold specific positions but assist on special projects as they come up.
- ▶ Our Board meets approximately once a month for several hours to discuss the governance of the club and the running and maintenance of our range.
- ▶ Our Junior Program runs 6 months a year during our indoor season and is run by a volunteer Junior Director and a team of volunteer coaches.
- ▶ Our How-To sessions for Not-For-Profit groups are run by volunteer coaches from our club.

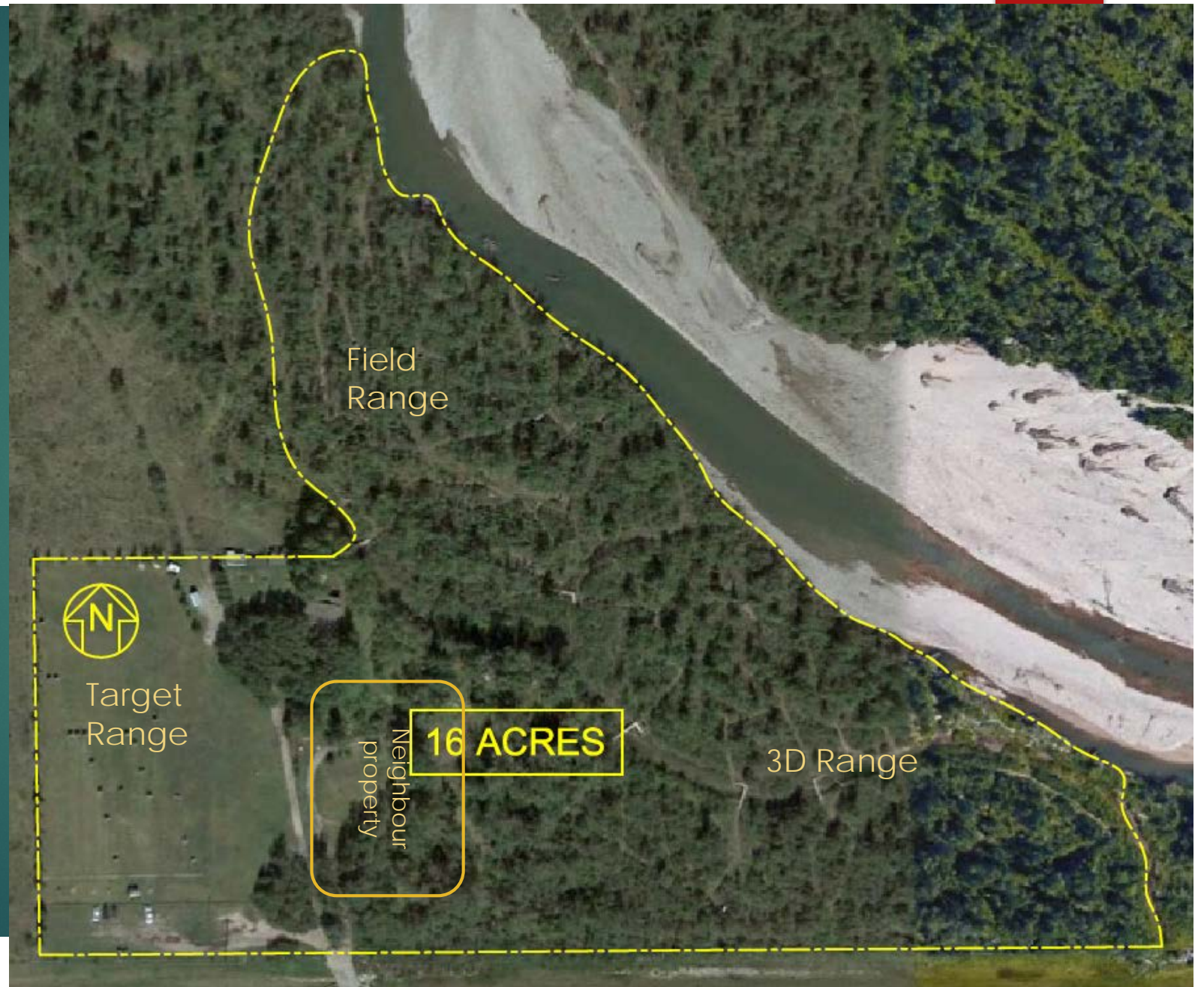
Calgary Archers Junior Program



Leaving our Highway #8 Home

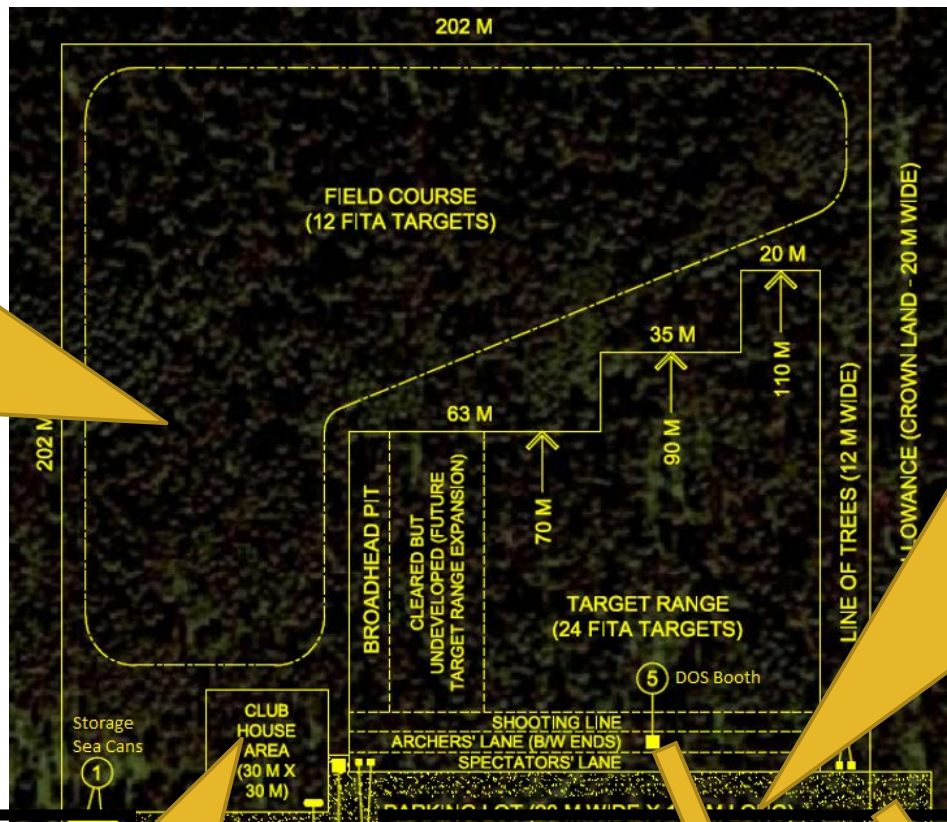
- ▶ In August of 2015 we received notice from the City of Calgary that they would not be able to renew the lease of our property on Highway 8 because the Province of Alberta mandated that the City make the land available for the expansion of Highway #8.
- ▶ The City of Calgary offered a property that was temporary and so not suited to our club's needs. This required that we had to go in search of new property without the assistance of the City.
- ▶ We tried reaching out to private citizens and large corporations alike for any space they could offer us. In the end the answer was always the same; the value of the land was too great to give to a small organization like ours.

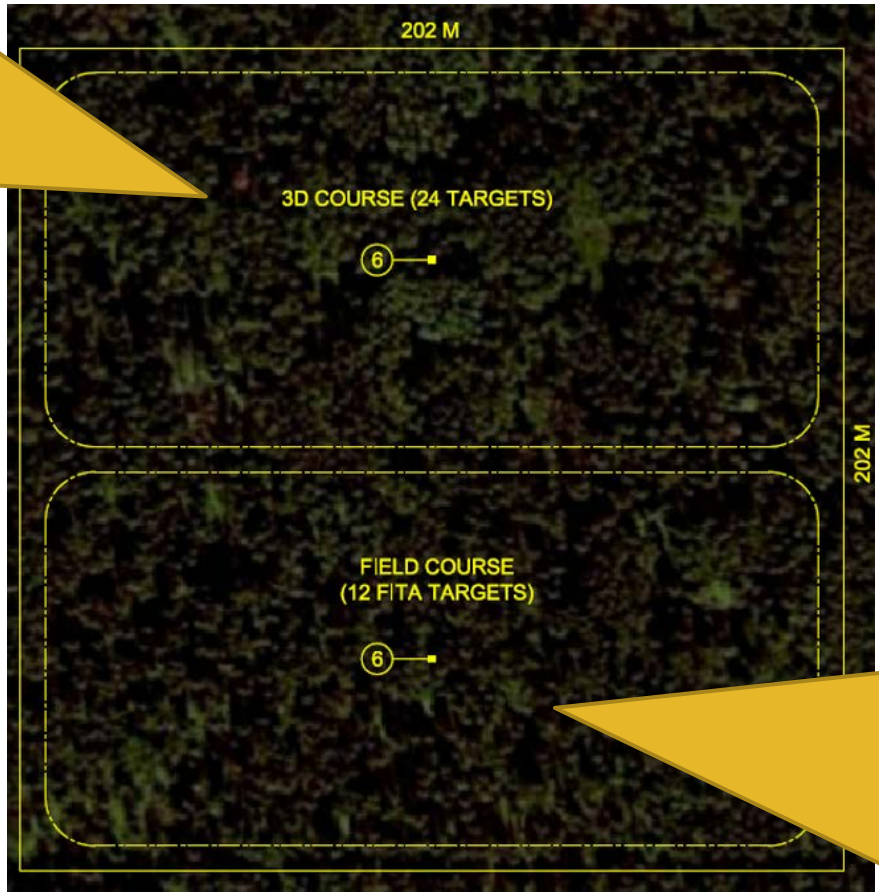
Satellite image of our old range



Our New Range Plans







Our New Lease

- ▶ After an exhaustive search for a new piece of property we had a conversation with Environment and Parks at the Alberta Government. During that conversation our current location was suggested.
- ▶ After we visited the property we were thrilled that this location could be available to us.
- ▶ We were struck by the beauty of the lush trees, the quiet atmosphere and the layout of the topography of the land. We knew that with a little work the target range could be cleared and the rest of the areas would be able to stay natural and be a wonderful archery range for our members.

A Timeline

- ▶ May 2016 we retained a company to help us secure the lease
- ▶ February 28, 2017 we were granted the lease from the Province of Alberta
- ▶ April 2017 we began clearing the target range and parking lot area
- ▶ Summer/Fall 2017 it was brought to our attention when we began discussion with Rocky View County (about upgrading the access road to our property) that while the lease as described by the Alberta Government as Recreational Development, it did not have the same designation with the Rocky View County. This is where we stopped development of the property so that we could work with the Municipality to re-designate the land and to make sure that we meet all the requirements.

A Timeline cont....

- ▶ Since the late summer of 2017 our subcommittee has been working through the process to be re-designated from Ranchland to Recreational so that we can finish the range and open it to our members.
- ▶ Our subcommittee is made up of 6 volunteer Board members who are giving the highest priority to making sure we meet our obligations with the municipality. We are new to this process and admittedly have made a few mistakes. But we will learn from our mistakes, especially when it comes to the impression we have given our new neighbours.
- ▶ Early July 2018 we officially filed our application for re-designation with Rocky View County.
- ▶ We were then provided with the letters of concern from our new community.
- ▶ October 23, 2018 we have a hearing with the Municipal District about our redesignation
- ▶ Spring/Summer of 2019 we hope to resume work to finish creating our ranges and open for shooting.

The Goals of Our Club

- ▶ Create a range that is welcoming to archers of all ages, sex and ability.
- ▶ Become a training facility that would allow our members to train at a facility that meets Olympic and World Archery standards for the disciplines of archery that we promote.
- ▶ Have a range that allows archers and their families to share our sport and time together.
- ▶ Have a range that allows our junior program athletes to hone their archery skills.

Why is the range divided between two parcels?

- ▶ The range is divided between the two parcels of land because that is the land that was available to us by the Province of Alberta.
- ▶ After going through the exhaustive search for land options we quickly deemed that we could easily work around the road allowance dividing our property.

What are our future development plans?

- ▶ What kind of buildings will we be erecting?
 - ▶ Within 5 years we hope to have a Club house. This will be a non-permanent surface structure like an ATCO trailer or garage package. It will be used for meetings and to get out of inclement weather.
 - ▶ Within the first year we hope to have a DOS booth which is a small three man structure that allows Judges and Safety Officers to sit on the shooting line to monitor the shooting while still being out of any weather.
- ▶ Will you be constructing anything other than the shooting ranges?
 - ▶ Aside from the Club house and DOS booth we will not be constructing anything else. We have a great working relationship with indoor ranges in Calgary and would continue holding indoor events at these facilities.
 - ▶ We would like to have a few primitive camping spaces available for our members but this will be several years down the road.
- ▶ What are the plans for future development beyond archery?
 - ▶ Our club has always been an archery only range. That means that crossbows and firearms are prohibited from our shooting range at all times. We intend to continue this policy at our new range.

Parking

- ▶ Our range will have a parking lot where all members will be expected to park. Our parking lot is planned to be 20 m wide by 150 m long (shown on our proposed site map to show size and location).
- ▶ We anticipate that this should be more than sufficient to hold all membership during any event and will not require the members to park on the road. In the event that we intended to hold a large event it would be our policy to find a designated parking place where we could shuttle people to and from our range.
- ▶ Our parking lot will be a one way in and out design.



Risk of an Archery Range and How We Stay Safe

- ▶ Our Club is affiliated with the World Archery Association and Archery Canada. These governing bodies and our Club take safety very seriously. Our club strives to ensure that our ranges avoid unsafe situations like stray arrows or situations that could lead to injury.
- ▶ Our Club is insured through Archery Canada and we follow the strict safety guidelines that meet our insurance requirements to keep members and neighbours safe.
- ▶ Through our range layout, controlled target placement, member training and proper line control we have a clean record when it comes to stray arrows and injuries.
- ▶ Shooting lines will be designed so that archers will not be shooting towards property lines.
- ▶ Our fences will be used to limit access of people and/or livestock into areas where shooting will occur.
- ▶ Backstops and berms built onto and around targets prevent stray arrows from leaving the range area.

Targets with Backstops

Example of field target with a backstop built on top to control the risk of stray arrows.



By Laws and Policies

- ▶ Our Club members and Board members were governed by a very detailed set of by-laws and policies. Our by-laws and policies were very specific to our last range and we intend to update these to reflect our new space and the concerns from our neighbours, the community and the changing topography of our new home.
- ▶ All club members are required to review and sign off on our by-laws and policies before getting a membership. The Board of Directors are responsible for enforcing the rules of our range and working with members if there were concerns or complaints.
- ▶ During our many years of operation there was only one member who required a policy reminder and that incident was related to dogs not being on a leash.

Hours of Operation and Shooting

▶ Hours for Shooting

- ▶ In our past location our property was gated and locked to ensure safety and security. Our members all had keys to the property and were allowed to access the property at any time, however, shooting was only permitted during daylight hours for safety reasons. It would be our plan to enforce a similar access structure at our new range.

▶ Future camping

- ▶ Will be available during phased development but will be strictly controlled for numbers. Our bylaws and policies will guide our members on our expectations of their behaviour when using these spaces.
- ▶ Our past range had a small treed area for tenting and a flat open space for trailers. These spaces were available for members who wished to do concentrated training and didn't want to lose time commuting during a weekend. No long term camping was ever permitted. All fires and cooking were limited to the communal fire pit and picnic area. There were never any noise or behaviour complaints at our past range.

Camping, Cooking and a Fire Pit



Camping

Limited number of primitive tent and trailer spots available to members who want to reduce their commute between practices.



Cooking

In the past we had a simple kitchen in the club house. As our facility will be primitive we would rely on 3-4 barbques for members to use.



Fire pit

Our past range had one communal fire pit that was available to members. No other fires were permitted on the property.

Capacity and Traffic

- ▶ At the height of our membership at our old range we had 350 members with more than 30% of them being junior athletes (that required a parent or guardian with them at all times). Currently we have 72 members not including our Junior Program membership.
- ▶ Our members use the range at different times of the year to suit their specific interests. Target shooters will use it more in June and July, while **hunters** will come out to get sight settings closer to August and September. These fluctuations in practice times mean that while we could have a larger number of members you wouldn't see a large number of people using the range at any one time.
- ▶ Our club has historically seen about 1-10 members use the range per day during normal use. The highest volume being during the warmer months and weekends. There were many days where there would be no members on the range all day.

Special Events

- ▶ An average special event (tournament or not-for-profit group) for our club would see up to approximately 40 people during daylight hours. At our past range our club tried to hold 2 events per month during the warmer months when the weather allows for outdoor shooting.
- ▶ Our target tournaments generally run from 10:00 a.m. to 2:00 p.m. and may be held for one or two days of a weekend. Participants would be making use of our parking facilities during these events.
- ▶ Occasionally our range would host a special large tournament. These events might attract around 70-100 participants that would compete during daylight hours. We could see 1-2 such events in a year but not on a yearly basis. There would also be many years where we hold no major events at all. During major events, participants would be expected to park on the property or park at a pre-arranged shuttle location and catch shared transportation to our property.

How much will traffic in the area increase and how will roads handle traffic?

- ▶ We appreciate that our members represent an increase in traffic and that our events will increase the volume so work will need to be done on the road to accommodate our use.
- ▶ As we anticipate that there will only be 1-10 people using the range on a day to day basis, with some days seeing no people at our range we expect minimal wear and tear. At our old range we had a gravel road that came off the highway. The traffic by our members required us to lay down some new gravel every 3-5 years depending on weather.
- ▶ We know that our re-designation will require road improvement. We will be working with the Municipality to make the required improvements to the road.

Noise from Equipment and Events

- ▶ Archery is a sport that is about quiet enjoyment. Our sport requires a great deal of concentration especially for those training for or taking part in competitions. Accordingly our events are very quiet. Spectators are welcome at our events but as it is a quiet sport it doesn't draw a large crowd.
- ▶ Archery equipment is finely tuned. If equipment makes noise it means that it is not performing optimally which means that archers are not going to score as high as they would like so archers are highly motivated to keep their equipment tuned and very quiet. The average decibels for a compound bow are 66 dBs. A golf swing is recorded around 120 dB, and normal laughter is recorded at 60-65 dBs.
- ▶ When arrows hit the target surfaces they have just traveled anywhere from 30 – 70 meters so will make a noise but it is not loud as the energy of the arrow has dissipated over the distance of the shot.

Environmental Stewards

- ▶ Once our range has been shaped we will be a natural area that can act as a refuge for wildlife and vegetation. Even though some of our membership may hunt they are prohibited from doing so on our range. Although we regularly had wildlife on our old range we have never had an issue with wildlife during our time in operation.
- ▶ We will be obtaining a membership with Audubon International as a Partner for the Environment to guide us while we create our range so that we may support the needs of our local ecosystem.
- ▶ Our past range required very little upkeep and we anticipate the same for our future range. Our FITA Target Range will require mowing during the summer shooting season, but our Field and 3D courses will require minor pruning of vegetation to maintain safe paths but will otherwise be left in a natural state.
- ▶ Where possible we will be using natural methods instead of chemicals, (i.e. to control bugs on our target range we will be erecting bat and bird houses to encourage both to consume the bugs so that other chemical control methods are not employed).
- ▶ A condition of our lease requires us to control invasive species. We take the conditions of our lease seriously and will work to ensure we are doing this.

Environmental Stewards



This is a view of our field course. There is a simple path along the right side of this picture. The rest of the terrain was left natural. Bridges were erected over bodies of water and streams.



This is a view of our target range. The grass was mowed on this range but no fertilizer or chemicals were used on the lawn. We will be using natural grasses on this range.

Waste Management

- ▶ Our plan is to have several outhouses available to members throughout the property to ensure that they are available and convenient to access while using the ranges. We plan to have these contractually maintained at regular intervals to ensure sanitary conditions.
- ▶ Garbage bins will be provided to members for use along the courses and on the shooting range. Garbage will either be trucked out by members during weekly work parties or we will hire a waste management company during high volume events.
- ▶ All garbage receptacles and outhouse facilities will be “wildlife proof”.

Contributing to the Community

- ▶ We offer free archery lessons to any Not-For-Profit Organizations (Boy Scouts, Girl Guides & Organizations assisting Individuals with Disabilities and School Groups) that wish to learn the sport of Archery. We regularly assisted with City events like Calgary's All Sport One Day offering instructional equipment and coaches teaching how-to skills, safety and good shooting form and would look forward to being involved in your community events.
- ▶ Some of our coaches that are certified through the NCCP are qualified to teach people to become coaches. Our facility was used as one of several centers in the Province that did coach training. These courses were opened up to club members and other members of the community such as camp and group leaders and school teachers. This is also a program we look forward to starting again when our range is up and running.
- ▶ Our club traditionally held 1-2 open houses every year where anyone was welcome to come on to the property. During this time we had coaches on the shooting line to teach new shooters and correct experienced shooters with form. We also had technical experts available to assist in inspecting old equipment and giving tuning and purchasing advice to people who had an interest but wanted more information before investing in sporting equipment. Again, we look forward to holding these in the future.

How-To Programs for Not-For-Profit Groups



Calgary's All Sport 1 Day Event



Calgary Board of Education Special Ed Class

Conclusion

The Calgary Archers Club has been a stable organization in the Calgary area for many years now. We are an ethical group of people interested in pursuing the sport of Archery.

We value grass roots learning and the education of youth.

We are community minded and are interested in becoming an active part of our new community.

Our members come to our club because we support and value time that can be spent with family or as individual in pursuit of a passion.

Questions

