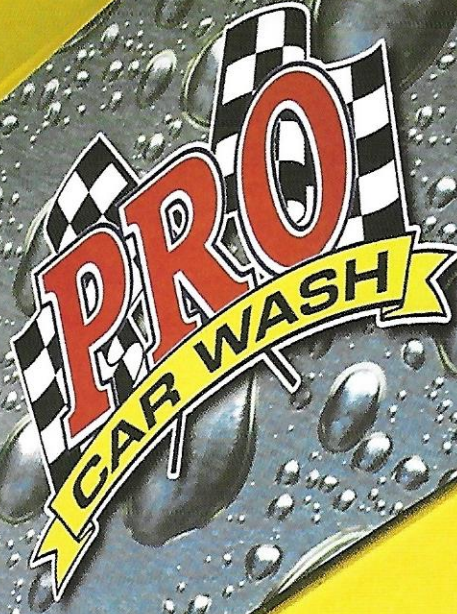




ATOR



The **FULLY** automatic
NAVIGATOR



A close-up photograph of a red car's front quarter being washed by a yellow automatic car wash system. The car is positioned on a wet, dark floor. The wash system consists of a vertical yellow pole and a horizontal arm with several black nozzles. Water is being sprayed onto the car's body and wheel. The car's headlight and a portion of its front wheel are visible. The background is slightly blurred, showing more of the car wash structure.

The **FULLY** automatic
NAVIGATOR

by Pro Equipment

*Designed to meet all
professional car wash
requirements.*

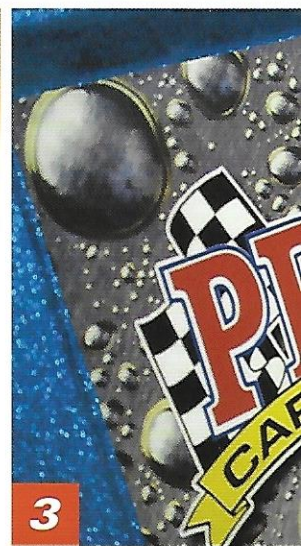
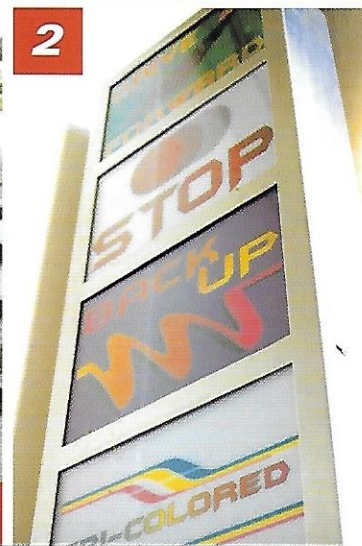
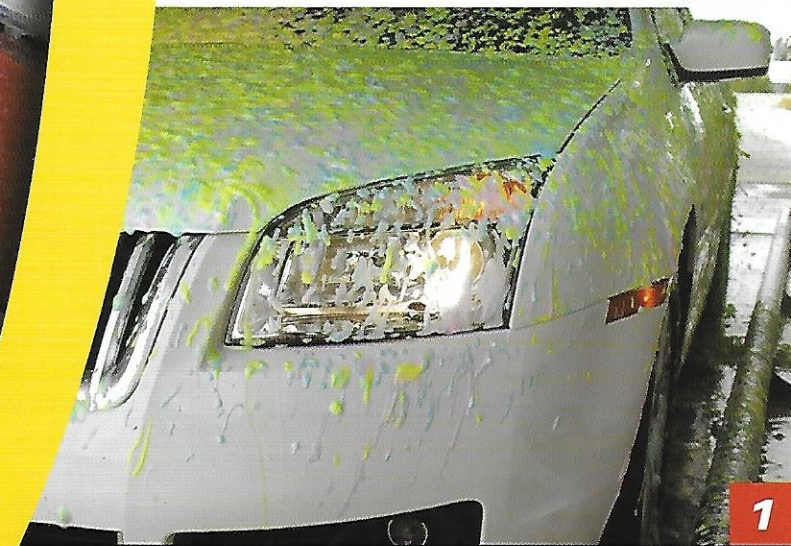
automatic computer

Pro's automated computer control package oversees the entire process of the washing functions for each vehicle that enters the automatic bay. Recognized as the "smart touchless automatic," the Pro Navigator provides the best service in the industry for both the customer and the owner/operator. An exclusive user-friendly computer interface program allows owners to make quick and easy adjustments to their car wash with the touch of a screen while providing added assurance that your system is working at peak efficiency.



main options

1. *Powerful soaking triple foam conditioner for the ultimate shine.*
2. *Highly visible light package provides customer with easy-to-understand instructions.*
3. *Customized graphics and colors.*



1-800-544-7767

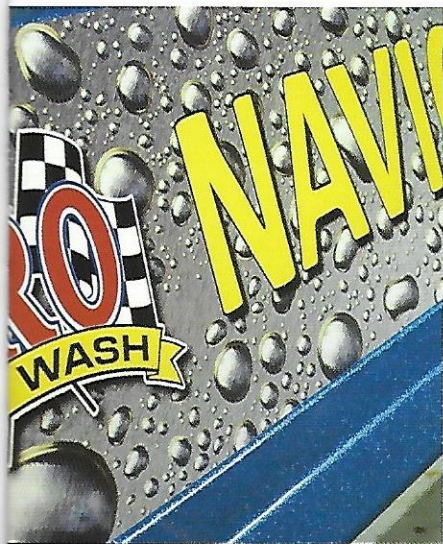
additional features and other services

Our Navigator premium high-pressure car wash system includes all the bells and whistles of competitive brands at a lower cost including a **compact 25 hp pumping unit with a 3535 CAT pump**, >> an undercarriage flush, chemical injectors, guide rails, operator interface touch screen and much more. Plus Pro Equipment Company also offers:

- car wash supplies • parts and service
- field repairs • installation • custom blueprints
- management services • vending support
- site analysis • feasibility studies

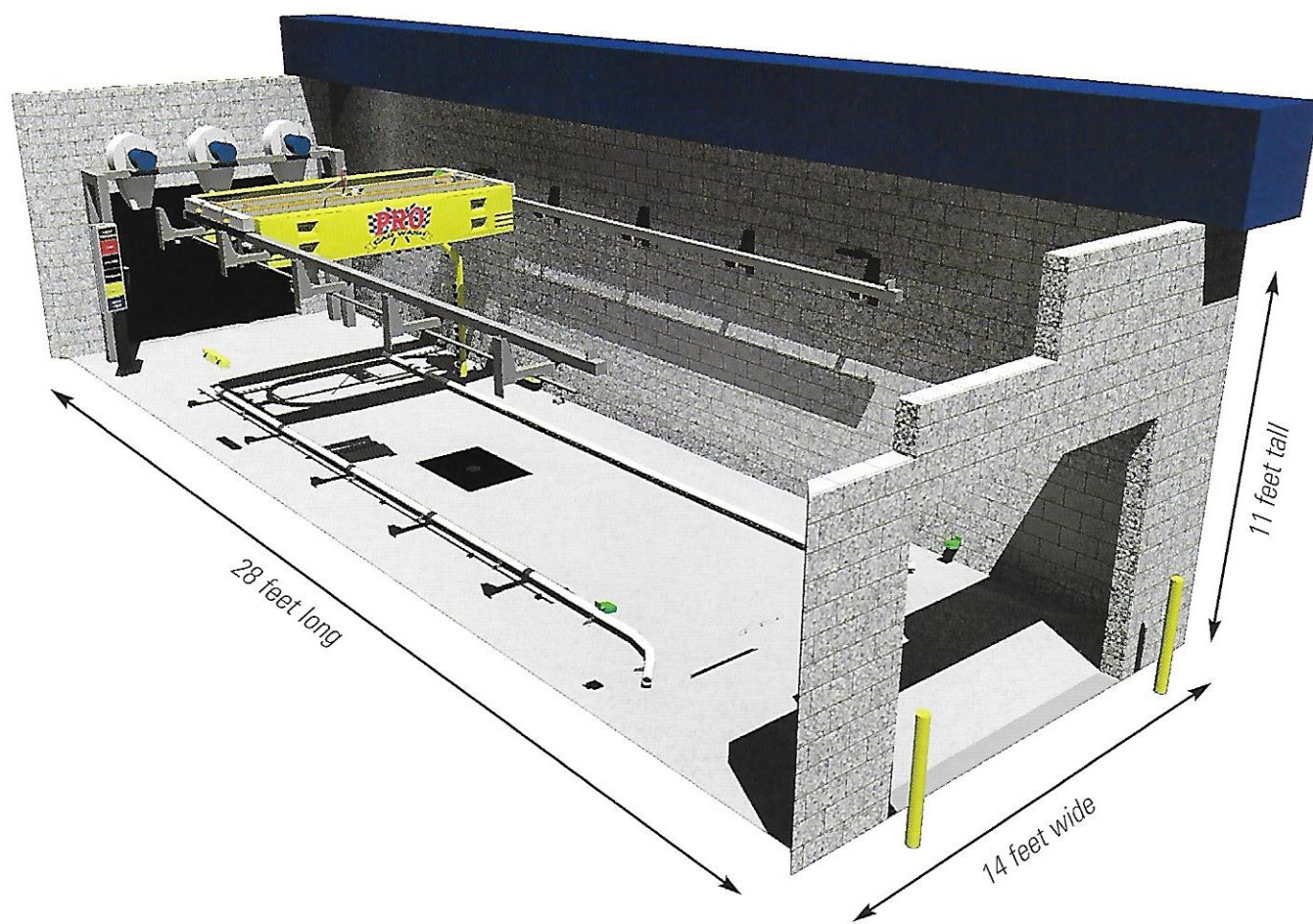


4. The Navigator has the ability to wash oversized vehicles like the Hummer and Super Duty Dually.
5. Single or two step low pressure presoak.



www.procarwashesequipment.com

the navigator's recommended bay dimensions



P.O. Box 441 • Benton, Kentucky 42025 • 1-800-544-7767 • www.procarwashequipment.com