

196 Marathon CC



SPECIFICATIONS

Overall Length	19'-6"
Beam	8'
Draft	17"
Approx. Boat Weight	1950 lbs
Max. Weight Capacity	1850 lbs
Swamped Capacity	3000 lbs
Persons Capacity	8
Maximum Power	200 hp
Recommended Power	150 hp
Minimum Power	115 hp
Transom Height	25"
Fuel Capacity	80 gal
Deadrise at Transom	18°
Interior Freeboard	21"



"McKee Craft's construction gives you confidence and peace of mind... You've got to love a boat that simply cannot sink..."

Boating Magazine



McKee Craft

www.mckeecraft.com THE UNSINKABLES

198 Marathon CC

NEW

STANDARD FEATURES

Hull and Deck

- 100% unsinkable - pressure foam filled construction
- 10-year limited structural hull warranty
- Bow eye, stainless steel
- Cleat, bow, 6" pop-up stainless steel
- Cleat, spring line, 6" (2) stainless steel
- Cleat, stern, 6" (2) stainless steel
- Fast/dry - reverse lifting strake hull design
- Fiberglass deck with patterned anti-skid surface
- Functional "Deck Forward" design
- Meets or exceeds all applicable U.S. Coast Guard safety standards
- Rubrail, heavy-duty vinyl with stainless steel insert
- Storage, all boxes are completely insulated
- Transom lifting eyes, (2) stainless steel

Fishability

- New flush "Deck Forward" design
- Livewells, (2) round 44 qts
- Livewell pump, 950 GPH
- Raw water washdown system
- Rod holders, (4) flushmount, stainless steel
- Rod storage, (4) vertical
- Tackle center, (4) drawer

Storage

- Anchor locker
- 72 qt Igloo® cooler
- (2) Gunnel rod lockers
- Fishbox, insulated, 214 qts

Mechanical

- Battery storage area in console
- Bilge pump, 550 GPH w/ automatic float switch
- Deluxe backlit multifunction switch panel and wiring system
- Fuel tank, welded aluminum, 80 gal
- Fuse block, ATO style
- Horn, flushmount
- Navigation lights
- Steering, Uflex Rotech® Planetary Gear design

Console Features

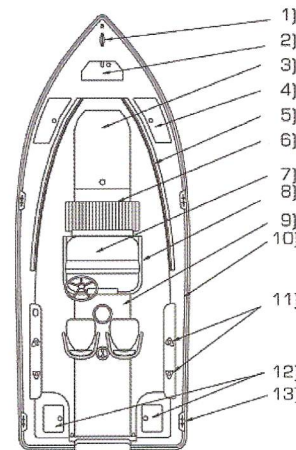
- Cockpit lights
- Console, deluxe center design
- Console storage has large access door, lockable
- Dash, ergonomic angels and rounded corners
- Glovebox, lockable
- Rail, console, stainless steel
- Rail, passenger handrail, stainless steel
- Raised inner floor provides dry storage
- Recessed fire extinguisher pocket
- Steering wheel, ultra-grip five spoke, stainless
- Windshield, Plexiglas

Cockpit

- Cambered floor for rapid self-bailing
- Cockpit drains with flapper valve
- Gunnel boards, fiberglass
- Deck latches, stainless steel with locks
- Hatch lift assist, stainless steel
- Rails, bow, recessed elliptical stainless steel
- Seating, (2) deluxe Captain chairs with sliders

OPTIONS

- Bimini top, Sunbrella® w/ stainless hardware & fasteners
- Boarding ladder, fiberglass w/ 2 step ladder & handrail
- Bow/lifting eye, stainless steel
- Colored hull sides, (7) selections
- Compass, 3" flushmount, illuminated
- Cushion, bow (1 pc) foldable to access fishbox
- Cushion, gunnel bolsters
- Cushion, livewell with backrests
- Rails, side, stainless steel 2' x 4"
- Rails, side, stainless steel 4' x 4"
- Seat, Tempress® bow fishing chair, removable
- Seat, 72 qts flipback cooler seat exchange
- Steering upgrade, tilt hydraulic
- T-top, factory installed



- 1) STAINLESS STEEL 6" POP-UP CLEAT
- 2) INTEGRATED ANCHOR LOCKER
- 3) 214 QT. STORAGE / FISHBOX
- 4) ROD / STORAGE LOCKER
- 5) STAINLESS STEEL BOW RAIL
- 6) 72 QT. REMOVABLE COOLER SEAT
- 7) LOCKABLE CONSOLE STORAGE
- 8) 4 DRAWER TACKLE CENTER
- 9) 80 GAL. BELOW DECK FUEL TANK
- 10) 72 QT. SWINGBACK COOLER SEAT
- 11) S.S. GUNNEL MOUNT ROD HOLDERS
- 12) DUAL 44 QT. AERATED LIVEWELL
- 13) 4 S.S. RECESSED 6" CLEATS

McKee Craft
www.mckeecraft.com THE UNSINKABLES

P.O. BOX 623
FAIRMONT, NC 28340
910.628.0926 FAX 910.628.9598
www.mckeecraft.com