

ZUHA

ISLAND

COLLECTION OF ULTRA-LUXURY WATERFRONT VILLAS
ON A PRIVATE ISLAND.

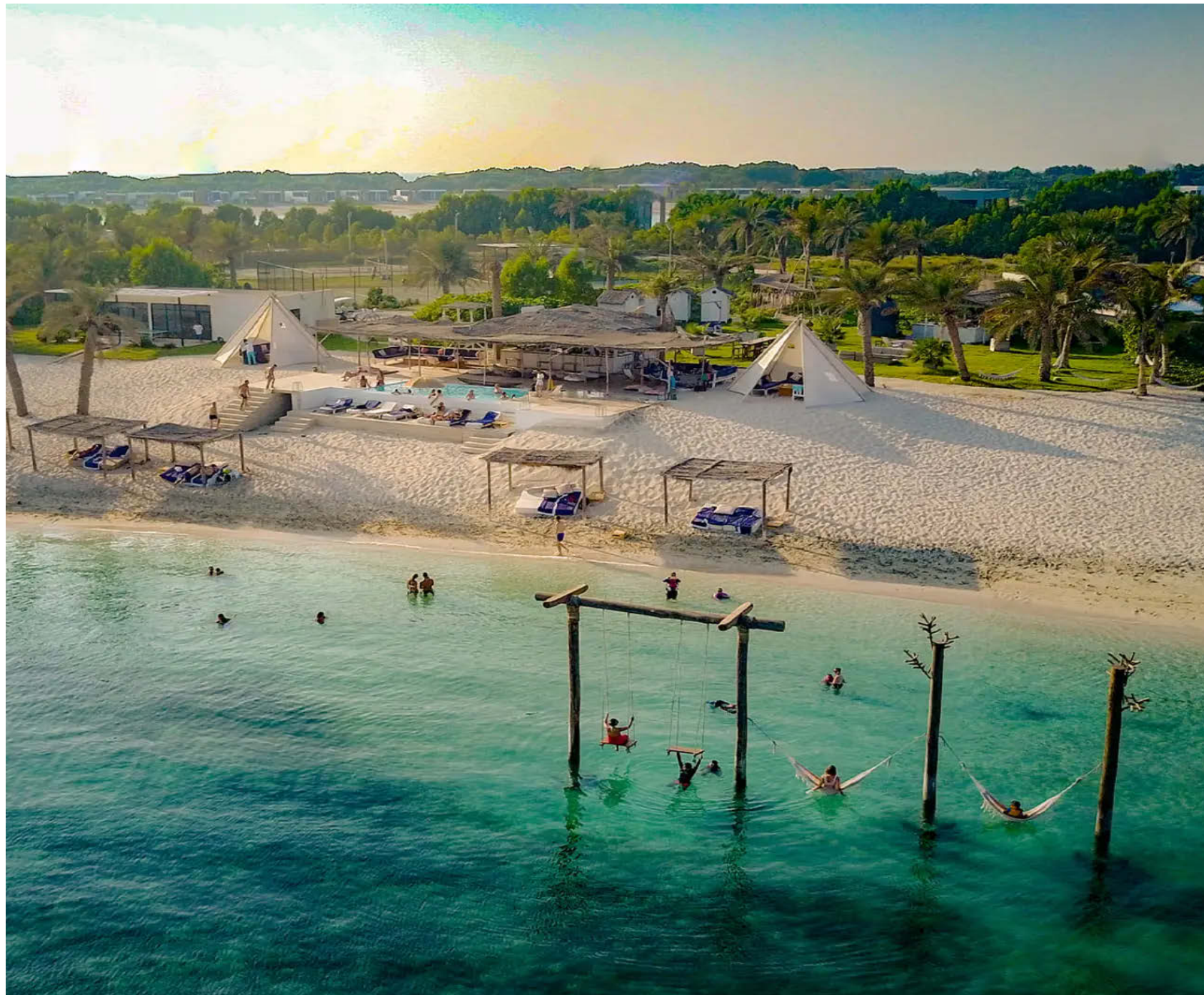
PAYMENT PLAN:

50% During Construction
50% On Completion

5% on Booking

BUA: 19,663 Sq. ft. | Plot Area: 30,800 Sq. ft.

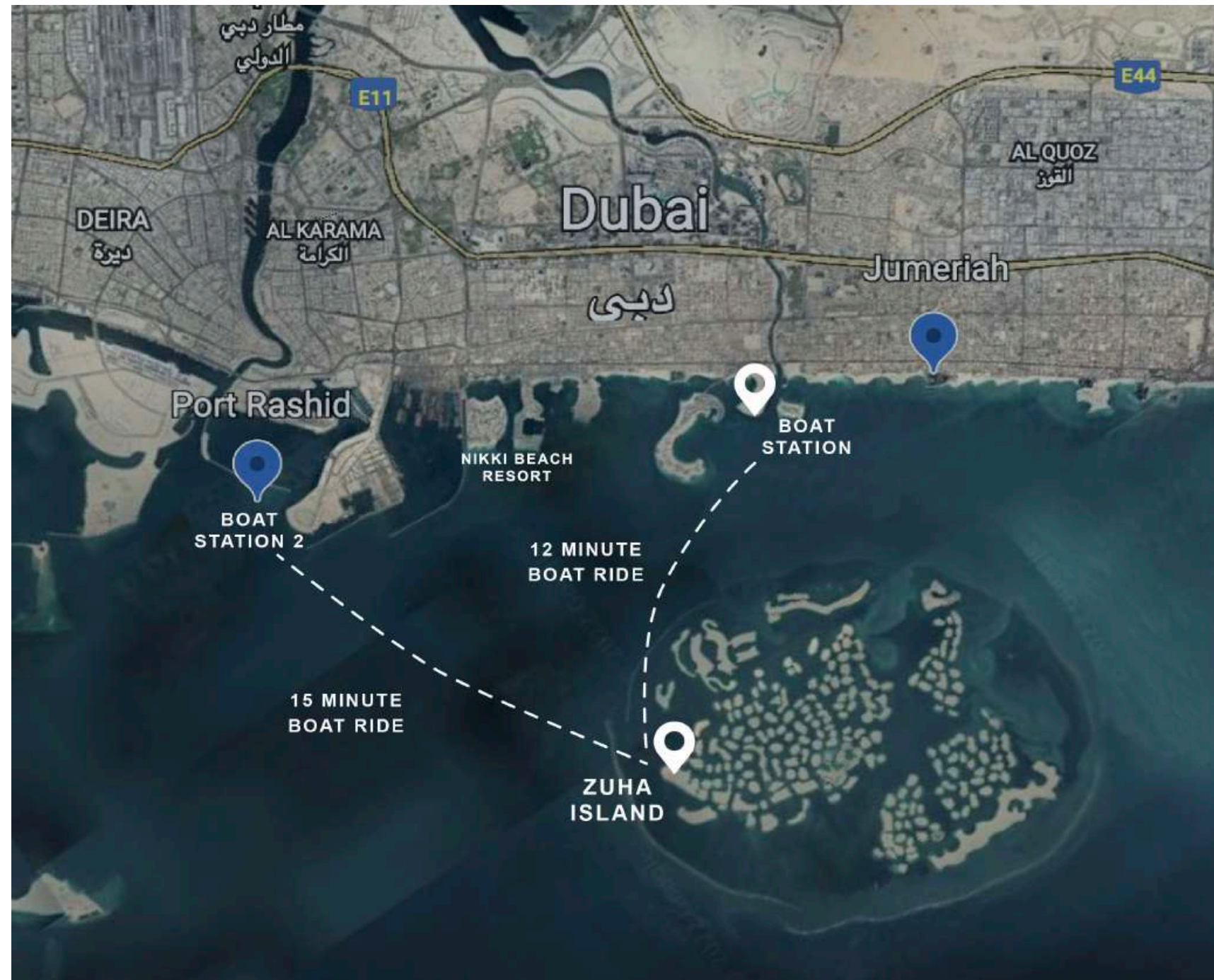
6-Bedroom Villas from AED 60,000,000



ZUHA

From the Arabic, meaning the 'morning light', ZUHA is the Emirates most sought after private island, an island of inspiration, delighting the senses and offering quality without parallel.

Designed to provide residents with generous plots of land, city skyline views and the utmost level of privacy, ZUHA is home to a world-class, boutique retreat and only 30 limited edition exclusive private residences, set around the bejeweled sea surrounding the island, which is over 2.5 million square feet with 2.5 kilometers of beachfront encircling rich greenery.



LOCATION

ZUHA is just 12 minutes by boat from our Jumeriah Beach Welcome Centre next to the Four Seasons, Dubai.

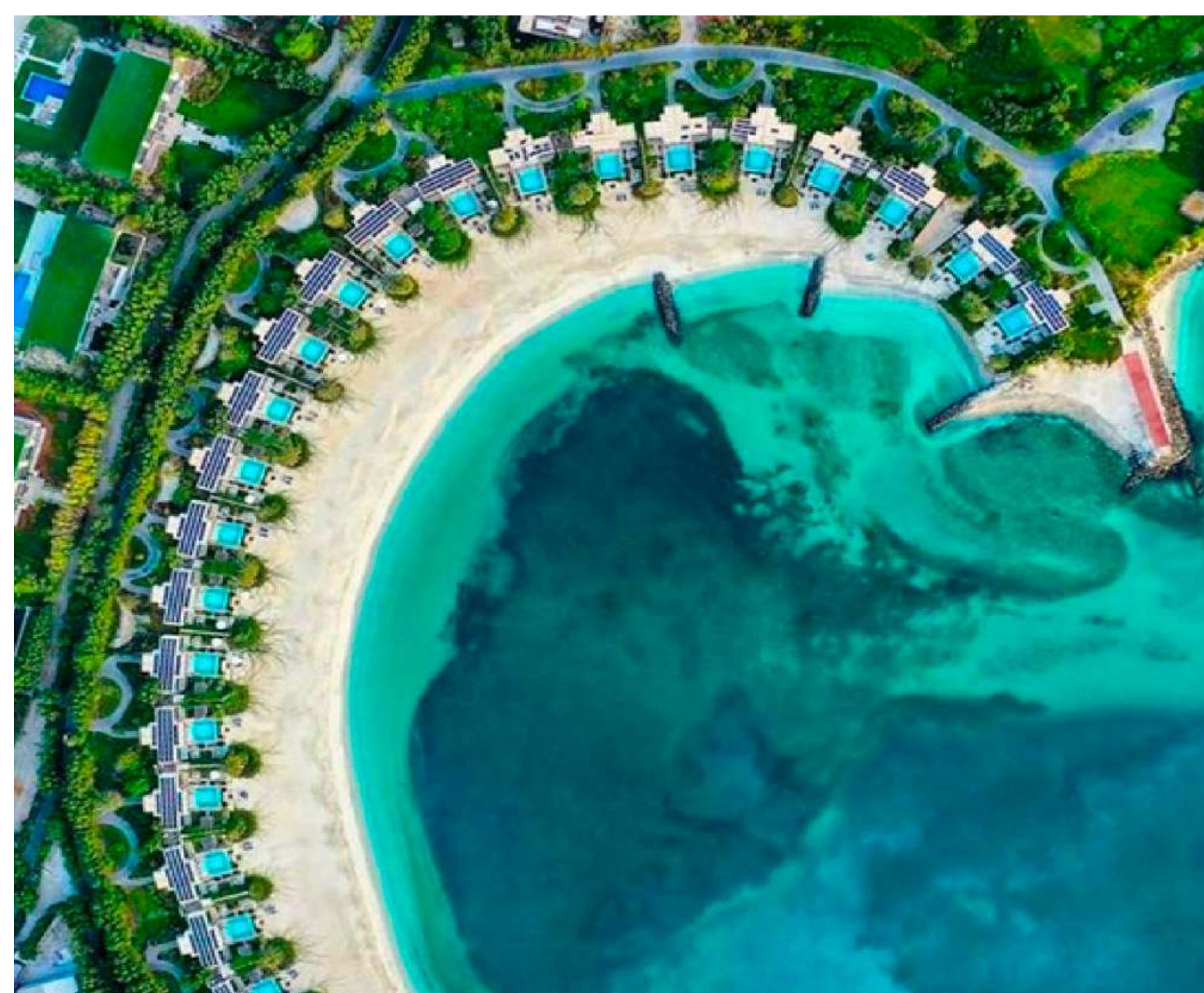
Your journey of luxury begins here - as you escape to your island retreat with skyline views of the city which has it all; eternal sunshine, hospitable and progressive culture, and an established global travel infrastructure.

It is not a place. It is a destination.

ISLAND EXPERIENCE

From the team who brought you the most luxurious island resort in the UAE, ZAYA has a proven track record of developing island infrastructure to a level of unparalleled and sustainable luxury.

Unbeknownst to most, Nurai island is not a natural island; starting with the original, small island which is just one third the size of today's renown resort, Nurai required extensive knowledge of infrastructure unique to the sea, sand and salt of the United Arab Emirates.







ZUHA
RESORTS

MASTERPLAN





MASTERPLAN HOTEL RESORT

- Ⓚ1 One Bedroom Villa
- Ⓚ2 Two Bedroom Villa
- Ⓚ3 Three Bedroom Villa
- Ⓚ4 Four Bedroom Villa
- Ⓚ8 Eight Bedroom Villa
- ⓀT Treehouse Villa

RESIDENTIAL

- ⓀV Residential Villas

FRONT OF HOUSE

- Ⓚ1 Arrival Jetty
- Ⓚ2 Reception/Lobby & Lounge
- Ⓚ3 Multi Function Facility
- Ⓚ4 Kids Club
- Ⓚ5 Beach Club & Ceviche Bar
- Ⓚ6 Beach Club Pool
- Ⓚ7 Watersports
- Ⓚ8 Floating Paddle Tennis Court
- Ⓚ9 Main Restaurant & Pool Bar
- Ⓚ10 Glass Box Event Space & Bar
- Ⓚ11 Spa
- Ⓚ12 Healing Centre
- Ⓚ13 Gym
- Ⓚ14 Tennis Court
- Ⓚ15 Football Field

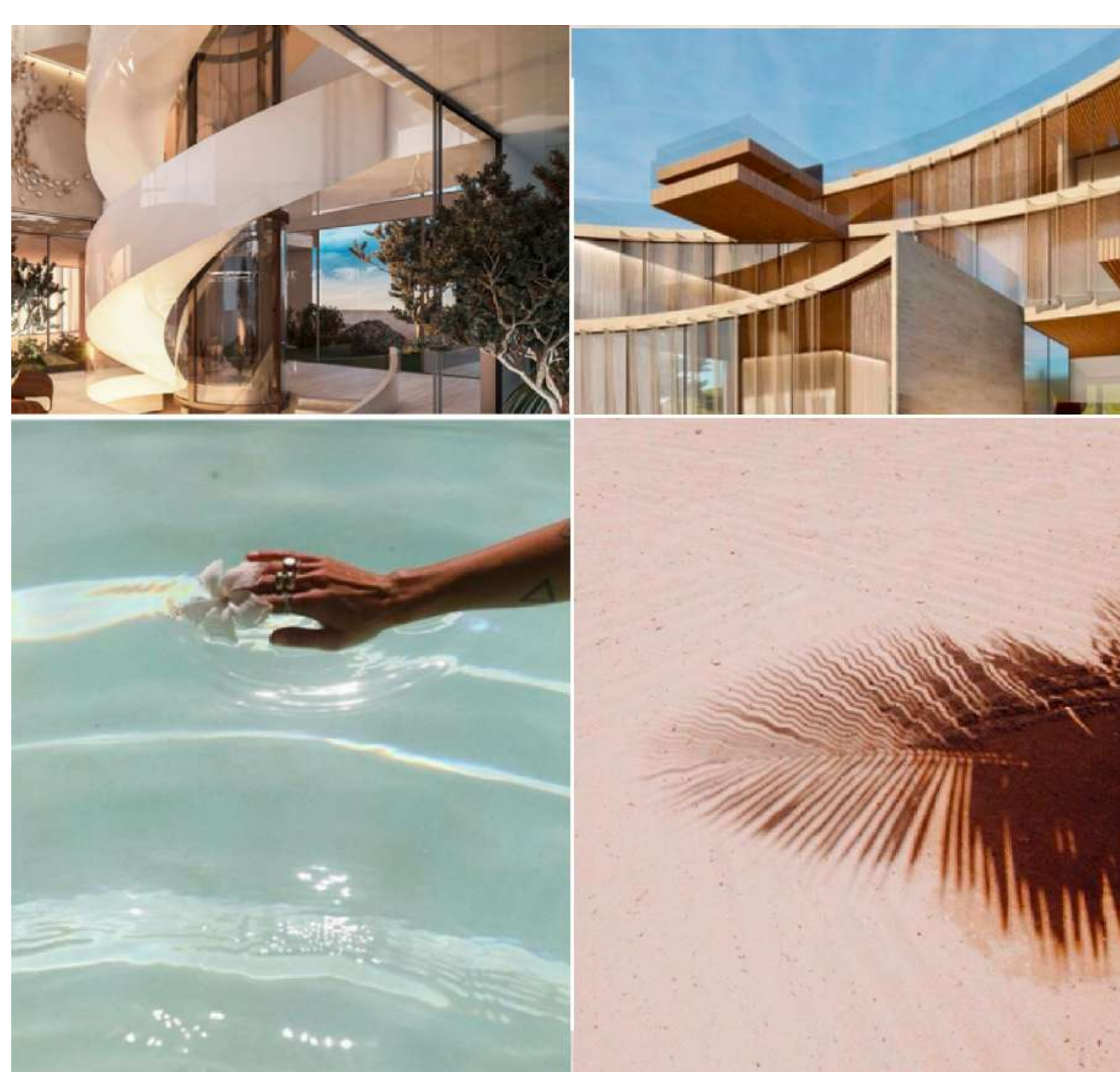
BACK OF HOUSE

- Ⓚ16 BOH Village
- Ⓚ17 Service Harbour & Storage
- Ⓚ18 House Keeping
- Ⓚ19 GM Villa
- Ⓚ20 HM Villa

RESIDENTIAL VILLAS

30 exclusive villas reflect the waves and embrace the nature of ZUHA. These dazzling waterside residences set around the bejeweled sea allow owners to become a part of the mystery and pulse of ZUHA, which also hosts world-renowned boutique retreat, spa, and restaurants.

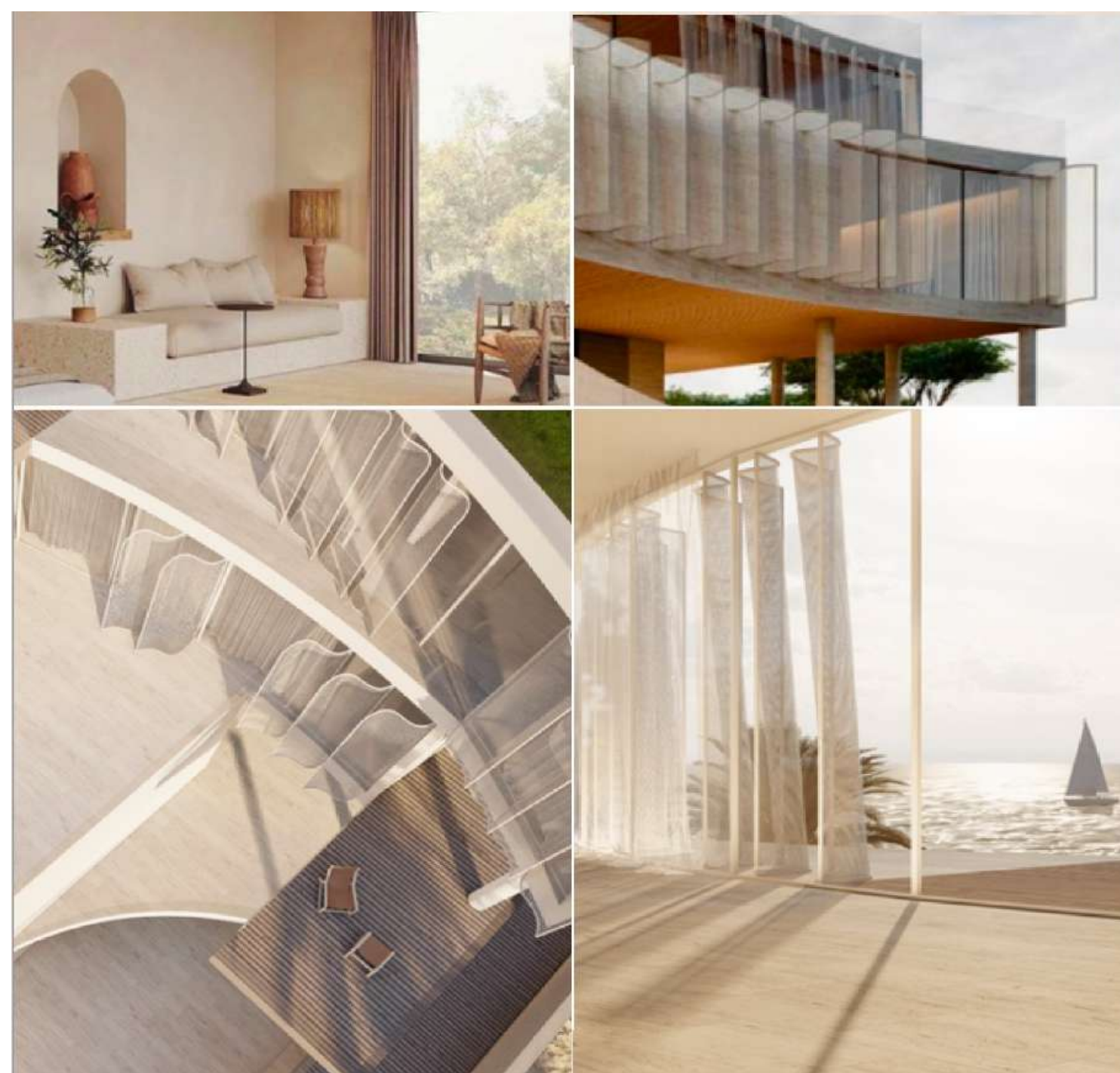
These palatial residential villas have been designed to provide residents with generous plots of land, a beachfront experience, city skyline views and the utmost level of privacy. Each villa embraces the whole island in one movement; a symphony as unique as you.



DESIGN

Starting with basic geometric forms set upon each plot, the initial phase of design was conceptualized to elevate the villas - to invite in the island from all sides, and to optimize the grandeur of the city skyline. Four unique stories rise up from beachfront to vast horizon - centralized around a single spiraling staircase - fanning open to generous terraces on both the island and ocean side.

Upon these initial solid shapes ZAYA allowed the island, ocean, wind and waves to inspire, sculpt and shape the villa in a wholly unique and organic way; to become a part of ZUHA.



RESIDENTIAL VILLA



RESIDENTIAL VILLA



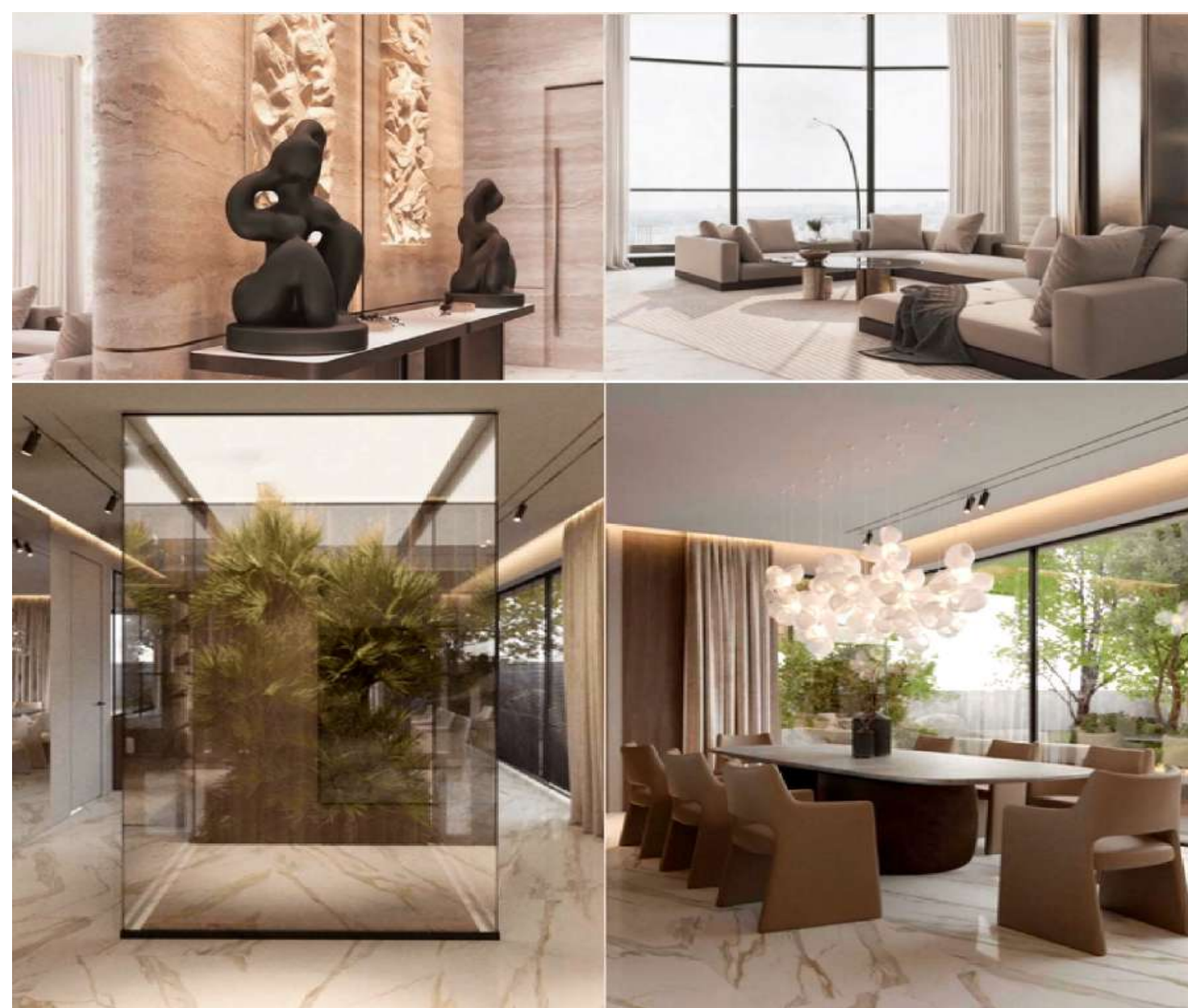


RESIDENTIAL VILLA

INTERIORS

Inspired by ZUHA, all of our interiors feature state of the art furniture and materials which celebrate and accentuate the curves, light and shape of the island.

Seamless flow between interior and exterior is achieved through neutral palettes and natural materials such as travertine and marble, which permeates each of the six en-suite rooms - including a master suite looking out to the ocean. Four living spaces, multiple terraces and a choice of dining spaces, each add subtle and elegant compliment to the design.



BATHROOMS

Water, healing, peace and sanctuary are some of the main features which permeate ZUHA's philosophy and accentuate her appeal. These elements are reflected in the exquisite bathrooms of the residential villas.

Through the use of indirect lighting, ocean views, and perfect privacy, enjoy the luxury and essence of the fluidity of the island from one of six state of the art bathrooms.



RESIDENTIAL VILLA



RESIDENTIAL VILLA



RESIDENTIAL VILLA



RESIDENTIAL VILLA



RESIDENTIAL VILLA



RESIDENTIAL VILLA



RESIDENTIAL VILLA



RESIDENTIAL VILLA



RESIDENTIAL VILLA



RESIDENTIAL VILLA



RESIDENTIAL VILLA



RESIDENTIAL VILLA



RESIDENTIAL VILLA



RESIDENTIAL VILLA



RESIDENTIAL VILLA



RESIDENTIAL VILLA







ACTIVITIES

ZUHA hosts a range of wild outdoor activities from our floating paddle tennis court to our water sports centre, it really has it all when it comes to seaside adventure.

Choose daily from kite-surfing, kayaking, sailing, jet skiing, diving, or swimming - and many more extraordinary curated experiences to satisfy even the most wild and active heart.



KIDS CLUB

ZUHA's Kids Club is filled with spaces and activities that will excite and entertain your kids. Our interactive outdoor spaces include nature play, splash parks, climbing walls, hills, obstacle courses and more.

Daily classes and activities from arts and craft sessions to scavenger hunts and sports games are just a few things we can name which will have your kids coming back for more every day.

FITNESS

Lose yourself in the ocean views and get fit-inspired at ZUHAs fitness centre; a wealth of activities from rebounding to running, yoga to TRX is offered in our state-of-the-art fitness centre - with three studios and a gym the fitness centre has a focus on optimizing wellness through advanced training and bio-hacking.

Our personalized approach means there is something for everyone; whether you want to sweat, breathe, lose weight, gain mobility or aid a journey of recovery.







ZUHA RESORT

Light is ZUHA's motif and wherever you are, you feel its touch and experience its illumination. Every building frames a new perspective, a fresh inspiration. Stroll along landscaped paths, imbibe the serenity of a spa courtyard, inhale the dazzling aromas of the region come to life. Imbibe in space, privacy, tranquility and allow beauty surround you.

The retreat, spa and restaurants are strategically positioned while the 70 resort villas are nestled on the ocean's edge with a canopy of undulating greenery.

ALL DAY DINING



ALL DAY DINING



BEACH CLUB



BEACH CLUB



BEACH CLUB



BEACH CLUB





SPA

Nestled in the centre of the island the spa and healing centre generates a haven of peace which places the whole world on pause. The spa takes its form from temple spaces, and the traditional architecture of this region, using air, water, and light to provide the ultimate unwinding of the senses in this unique spa.

Treatments are inspired by the same; reviving traditional Arabic healing, the ZUHA spa is an invocation of the region, reimagined and reenergized through time.







MARINE WORKS

Familiar with all of the difficulties of developing an island, ZAYA began the Nurai island project without any preexisting infrastructure; there was no road network, no electricity or connection to the grid, no sewerage system or clean drinking water.

After extensive oceanography and land surveying, eroded beaches were built up using exposed geobags and sand pumping to make a generous island and extraordinary development over double its original size.



UTILITIES

Power is generated on the island using a mixture of generator and solar power.

Water is all purified and recycled on site via a reverse osmosis desalination device for drinking water, while the sewage system is all recycled into irrigation water.

Each of the necessary elements from dredging to sand-pumping, from generating energy to bottling water has been put in place to generate a solid, sustainable and self-sufficient foundation for what has become one of the World's most coveted island resorts.



