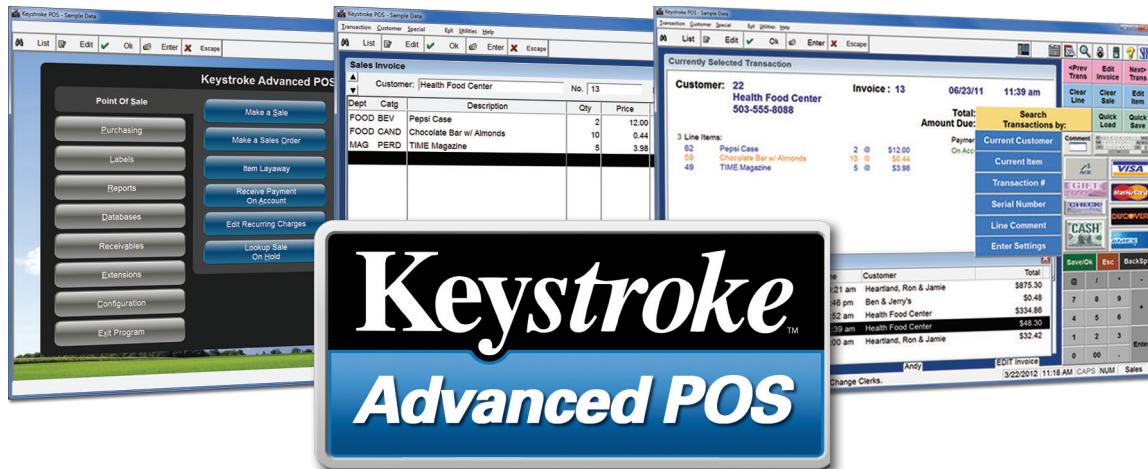


ADVANCED POS



Powerful Point Of Sale Software for Prospering Businesses

Keystroke Advanced POS is the ultimate POS system for serious retailers and businesses with specialized automation needs. Whether you operate a small startup retail store, a multi-location chain, or a well established distribution business with retail and wholesale customers – make Keystroke Advanced POS the cornerstone of your business automation solution.

Ease of training, streamlined functionality and a robust feature-set make Keystroke Advanced POS hands-down the best value retail system available anywhere. The versatility of Keystroke Advanced POS runs circles around other POS software packages – including market-specific custom solutions costing thousands of dollars more.

The flexible design of Keystroke POS software is time-tested over 20 years and proven reliable for thousands of successful businesses. With Keystroke POS software your business and staff can depend on the experience and expertise of a local Authorized Keystroke Dealer – backed by the award winning technical support services of Specialized Business Solutions.

Fast & simple transaction entry – Extensively configurable to maximize efficiency in high volume stores and sustain proper record keeping in more complex sales operations such as wholesale ordering and specialty services.

Robust databases & reporting – *Fast – reliable – real-time integratable.* Virtually unlimited database capacity, extensive data fields, powerful lookup features, and editable report formats.

Secure credit/gift card processing – Fully integrated and PCI PA-DSS compliant KeyPay™ payment software included with end-to-end encryption & tokenization.

Open hardware support – Operates in Windows® XP, Terminal Services, or 64-bit Windows® 7 environments. Supports most printers and peripherals including barcode scanners & printers, electronic scales, change dispensers, biometric readers, security recording systems (DVR), and state-of-the-art all-in-one POS workstations.

Easy to learn and use – *Intuitive – Flexible – Touch-Friendly*
Traditional pull-down menus, browser-style Navigation Menus, and customizable Toolbars for frequent tasks. Built-in TouchScreen Editor and powerful Macro support.



Partnering for reliable retail solutions since 1988!

Questions?
Consult with an Authorized Keystroke Dealer or call SBS at **800.359.3458** today!

rev. 1/16

THE CLEAR CHOICE IN RETAIL AUTOMATION

www.KeystrokePOS.com