

# ***THUNDER STRUCK***

# ***BUMPERS***

## **PRODUCT CATALOG**



**WWW.THUNDERSTRUCKBUMPERS.COM**



# THUNDER STRUCK BUMPERS

1-800-240-9392

**Thunder Struck Bumpers** is a leading manufacturer in premium aftermarket bumpers. We offer heavy duty Grille Guards, Front-End Replacements, Front Bumpers, Rear Bumpers, Off-Road Bumpers, and additional accessories for full size trucks. **Thunder Struck** products are designed to protect your vehicle from the harshest impacts. Every unit is uniquely designed to contour to the body lines of the vehicle enhancing its style. **Thunder Struck** has built its reputation in the backroads and job sites of the Midwest where we are known for our “**Legendary Strength & Durability**”.

**Thunder Struck** products are manufactured with 1 ¼” *square tube* rolled onto the diamond. The 90° corners on the square tube give the grille guard **unmatched strength**. The bumper bodies are constructed from 1/8” tread or smooth plate and mount directly to the frame of the truck using a combination of 3/8” and 1/2” steel plate. The mounts on all of our products are adjustable, which makes for a perfect fit every time. No additional drilling or welding is required. Front End Replacements come standard with factory fog light mounts and most have repositioned tow-hook mounts for easy access. Our products come standard in a textured mid-gloss black powder coat; however, we also offer a variety of colors or finishes.

### **Options Available:**

- Winch Mount
- Receiver Tube
- Clevises & Lugs
- Wheel Flare Extensions
- Off-Road Lighting

**Thunder Struck Bumpers** takes pride in manufacturing Elite Truck Accessories that are “**Made in the USA**”.

Call today and visit with our sales team to assist you in upfitting your vehicle.

For a further look into our products, please visit

[www.thunderstruckbumpers.com](http://www.thunderstruckbumpers.com) or [www.facebook.com/tsbumpers](http://www.facebook.com/tsbumpers)





# THUNDER STRUCK BUMPERS

SQUARE TUBE - "UNMATCHED STRENGTH"

FRONT END REPLACEMENTS  
GRILLE GUARDS  
FRONT BUMPERS  
REAR BUMPERS  
OFF-ROAD BUMPERS  
EMERGENCY VEHICLES  
ACCESSORIES





**2019+ CHEVY 1500**



Part Shown: CLD19-100

Compatible with Front Park Assist Sensors



# 2016-18 CHEVY 1500



Part Shown: CLD16-100



Part Shown: CLD16-200

Compatible with Front Park Assist Sensors: CLD16-200PA



# 2014-15 CHEVY 1500



Part Shown: CLD14-100



Part Shown: CLD14-200PA

Compatible with Front Park Assist Sensors



# 2020+ CHEVY 2500HD/3500HD



Part Shown: CHD20-100CA



Part Shown: CHD20-200SM PA CA



# 2015-19 CHEVY 2500HD/3500HD



Part Shown: CHD15-100



Part Shown: CHD15-200SM

Compatible with Front Park Assist Sensors: CHD15-200PA



# 2011-14 CHEVY 2500HD/3500HD





# 2019+ RAM 1500 NEW BODY



Part Shown: DLD19-100



Part Shown: DLD19-200SM with Round Lights

Compatible with Front Park Assist Sensors: DLD19-200PA



# 2013-19 (CLASSIC) RAM 1500



Part Shown: DLD09-100



Part Shown: DLD13-200PA

Compatible with Front Park Assist Sensors: DLD13-200PA



**2019+ RAM 2500-5500**



**Part Shown: DHD19-100**



**Part Shown: DHD19-200**

**Compatible with Front Park Assist Sensors: DHD19-200PA**



**2013-18 RAM 2500-5500**



**Part Shown: DHD10-100**



**Part Shown: DHD13-200SM**

**Compatible with Front Park Assist Sensors: DHD13-200PA**



**2010-18 GAS RAM 2500/3500**  
**2010-12 DIESEL RAM 2500-5500**





# 2017+ FORD F-250-F-550



*Part Shown: FSD17-100*

*Compatible with Front View Camera & Adaptive Cruise: FSD17-100CA*



*Part Shown: FSD17-200*

*Compatible with Front View Camera & Adaptive Cruise: FSD17-200PA CA*



# 2011-16 FORD F-250-F-550



Part Shown: FSD11-100



Part Shown: FSD11-200



# 2018+ FORD F-150



Part Shown: FLD18-100

Compatible with Front View Camera: FLD18-200CA



Part Shown: FLD18-200

Compatible with Front View Camera & Adaptive Cruise: FLD18-200PA CA



# 2015-17 FORD F-150



*Part Shown: FLD15-100*

*Compatible with Front View Camera: FLD15-100CA*



*Part Shown: FLD15-200*

*Compatible with Front View Camera & Adaptive Cruise: FLD18-200PA CA*



# 2009-2014 FORD F-150



Part Shown: FLD09-100 with Horizontal Bars



Part Shown: FLD09-200



# 2015-17 FORD EXPEDITION



Part Shown: FEX15-100



Part Shown: FEX15-100



# 2018+ FORD EXPEDITION



Part Shown: FEX18-100



Part Shown: FEX18-100 with Horizontal Bars



**2015-19 GMC 2500HD/3500HD**



*Part Shown: GHD15-100*



*Part Shown: GHD15-200PA*

*Compatible with Front Park Assist Sensors: GHD15-200PA*



# 2020+ FORD EXPLORER TVI



Part Shown: FXR20-100TVI



Part Shown: FXR20-100TVI



# 2007+ JEEP WRANGLER



Part Shown: JJK07-FB SM PR



Part Shown: JJK07-FB SM PR

Shown With: M1 Lights and Recessed Light Bar



# 2015+ DODGE CHARGER PURSUIT



Part Shown: DCH15-100TVI



Part Shown: DCH15-100TVI



# 2019+ DODGE DURANGO PURSUIT



Part Shown: DDR19-100TVI



Part Shown: DDR19-100TVI



# PREMIUM FRONT BUMPERS





# PRE-RUNNER SERIES





# REAR BUMPERS

We only use American-Made Steel. Our bumper shell is constructed with 1/8" tread plate or 10-gauge smooth steel that is formed onto a 1/4" steel frame.



## Features:

- Provides rear bumper protection
- Bolts directly to the frame
- Fits above the factory receiver hitch
- Retains factory license plate lights and trailer plug-in

## Options:

- Auxiliary Lighting
- Clevis Mounts





# ***THUNDER STRUCK FIRE SERIES***





# FIRE SERIES





# FIRE SERIES





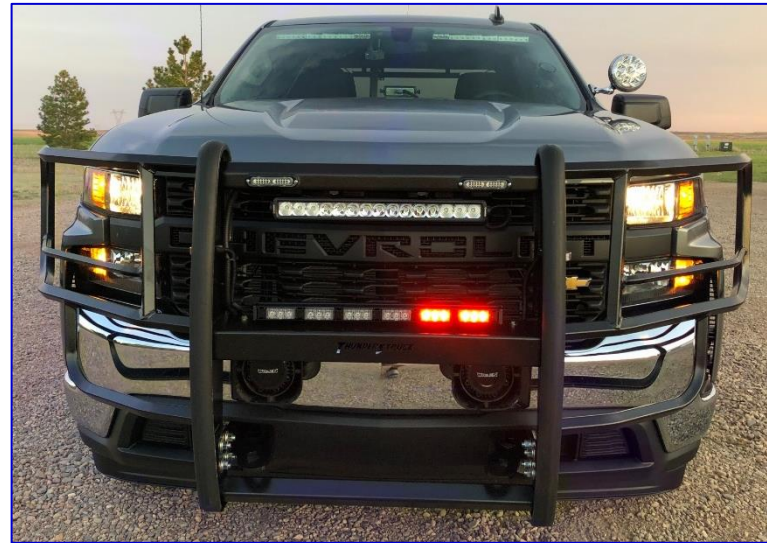
# *THUNDER STRUCK*

## LAW ENFORCEMENT





# LAW ENFORCEMENT



## ***CUSTOMIZED TO FIT YOUR NEEDS!***

- Thunder Struck is currently the only company in the United States that manufactures products using square tube, which is three times stronger than round tube that our competitors use.
- Made with American Steel
- Fully welded construction for added strength and durability.
- Pre-drilled emergency light mounts and have the option to add speaker mounts.
- Rubber push pads available to provide a strong push surface for extra protection and the ability to perform pit maneuvers.
- Functional Tow Points
- The Dodge Charger and Ford Explorer TVI units come standard with lower skid pans for extra protection.





# LAW ENFORCEMENT





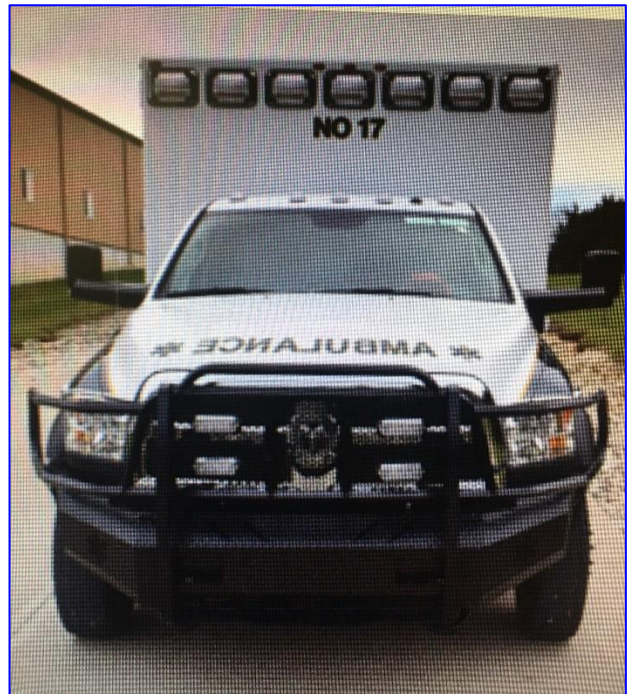
# *THUNDER STRUCK*

## EMS





# RESCUE SERIES





# ACCESSORIES



**THUNDER STEP**  
**WINCH CRADLE**  
**OFF-ROAD LIGHTING**  
**FORD F-150 INTERCOOLER**





# TESTIMONIALS



## Ken Schrag

November 25.

I hit a big doe the other night with my f150 that I had put a thunder struck grill guard on about two years ago. I was going about 65 when I hit it right in front of the left headlight. The guard didn't bend at all and saved my pickup. I'm beyond impressed with the quality. I'll definitely be buying more in the future.



## Jane Hall

August 15

These bumpers are worth every penny! My husband hit a deer with my F150 Eco boost and did twelve hundred dollars worth of damage going only forty mph. We put your bumper on after the deer damage and I hit an approximately three-hundred-pound black bear going fifty-five mph and there was no damage to the truck or bumper! Thunderstruck is a great bumper and well worth every penny in my book!

Guys,

Just thought I'd say thanks. Put your bumper on an 03 Ford Excursion as the result of a deer. Had an untimely meeting with a big (farm feed) Pa. Whitetail (8 pt.) last night @ 60MPH dead center in the bumper. Your bumper did great not a scratch on it. Think I need need to also put one on the truck. Great Product!

Thanks again.

Bob Esmond

## WHY SQUARE TUBE?

### Square Tube vs. Round Tube

Civil Engineer Calculators

#### Calculate Deflection for Round Tube Beams

<http://www.calculatoredge.com/civil%20engg%20calculator/beam.htm#tube>

Enter your values:

Length:  Inches  
Diameter:  Inches  
Wall Thickness:  Inches  
Force:  Pounds  
Material:

Calculate

Clear

Result:

Deflection:  Inches  
Bending Stress:  PSI

#### Calculate Deflection for Round Tube Beams

Enter your values:

Length:  Inches  
Diameter:  Inches  
Wall Thickness:  Inches  
Force:  Pounds  
Material:

Calculate

Clear

Result:

Deflection:  Inches  
Bending Stress:  PSI

Weight per foot: 7.343 lbs.

### Deflection Calculator for Square Tubing

<http://metalgeek.com/static/deflection.php>

Steel tube  
ends free

tube size in inches:   
decimal gauge:   
length of beam in inches:   
center load in pounds:

calculate

Weight per foot: 1.912 lbs.

type = steel ends = free  
est. weight = 1.9123# per foot  
OD = 1.25" ID = 1"  
Moment of Inertia = 0.12

Deflection = 1.0913"

To compare the deflection of square tube, the round tube would have to be 3 inches in diameter and have 1/4" wall thickness.



# ***THUNDER STRUCK BUMPERS***

JANUARY 2020



[WWW.THUNDERSTRUCKBUMPERS.COM](http://WWW.THUNDERSTRUCKBUMPERS.COM)

[WWW.FACEBOOK.COM/TSBUMPERS](http://WWW.FACEBOOK.COM/TSBUMPERS)

[WWW.INSTAGRAM.COM/THUNDERSTRUCKBUMPERS](http://WWW.INSTAGRAM.COM/THUNDERSTRUCKBUMPERS)