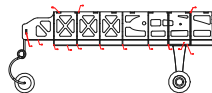
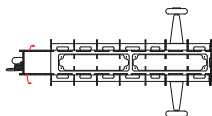
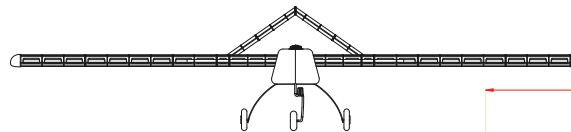
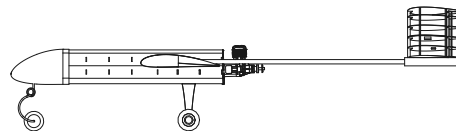
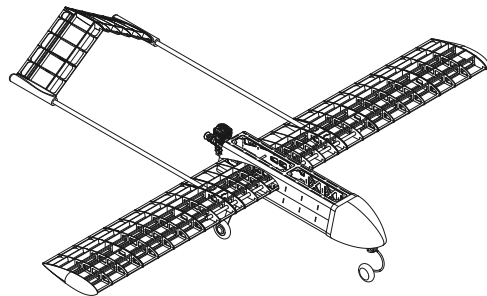


ROYAL AIR FRAMES

For the DIY enthusiasts and makers, Royal Air Frames offers a wide range of DXF and STL files kits. With our digital files, you can embark on your own 3D printing or wood laser cutting projects, bringing our stunning airframe designs to life in the comfort of your home or workshop.

Visit Our Website :

<http://royalairframes.com/>
Wingspan : 2630mm (103")
Wood Sheet Thickness : 3mm
Material : Plywood/Balsa



Fuselage - 3mm

Wing Sheeting - 3mm

Qty.	Name	Quantity	Material
1	F1	2	Balsa
2	F2	1	Balsa
3	F3	1	Balsa
4	F4	1	Balsa
5	F5	1	Balsa
6	F6	1	Balsa
7	F7	2	Balsa
8	F8	2	Balsa
9	F9	2	Balsa
10	F10	1	Balsa
11	F11	2	Balsa
12	F12	2	Balsa
13	F13	1	Balsa
14	F14	1	Balsa
15	F15	1	Balsa
16	F16	1	Balsa
17	F17	1	Balsa
18	F18	2	Balsa



Wing - 3mm

Qty.	Name	Quantity	Material
1	W1	2	Balsa
2	W2	2	Balsa
3	W3	2	Balsa
4	W4	2	Balsa
5	W5	1	Balsa
6	W6	1	Balsa
7	W7	1	Balsa
8	W8	1	Balsa
9	W9	1	Balsa
10	W10	1	Balsa
11	W11	1	Balsa
12	W12	1	Balsa
13	W13	1	Balsa
14	W14	1	Balsa
15	W15	1	Balsa
16	W16	1	Balsa
17	W17	1	Balsa
18	W18	2	Balsa

X11

Tail - 3mm

Qty.	Name	Quantity	Material
1	T1	2	Balsa
2	T2	2	Balsa
3	T3	2	Balsa
4	T4	1	Balsa
5	T5	1	Balsa
6	T6	1	Balsa
7	T7	1	Balsa
8	T8	1	Balsa
9	T9	1	Balsa
10	T10	1	Balsa

